



## INCIDENT ACTION PLAN

# Pioneer Fire

Operational Period  
Saturday, July 13, 2024  
Dayshift – 0700 to 2100

**WA-SES-000173**  
**USFS: PN RZ79 (1522)**  
**DOI: RZ79**  
**WA DNR: 221-LDW**



**Maps, IAP,  
Finance &  
Briefing Link**


Ground	Air
FS:	
DNR:	
OSC:	
FS AA:	
DNR AA:	

This page intentionally left blank.





## ORGANIZATION ASSIGNMENT LIST (ICS 203)

<b>1. Incident Name:</b>		<b>2. Operational Period:</b> 0700-2100	
PIONEER		Date/Time From: 07/13/2024 0700 SAT	Date/Time To: 07/13/2024 2100 SAT
<b>3. Incident Commander(s) and Command Staff:</b>		MEDICAL UNIT	DIANA BRAUN; LONDA VAN KIRK; BEN ELKIND(T) CASS JACKSON(T); JED GETMAN(T)
IC/UC	JEFF DIMKE	SECURITY UNIT	RON TAYLOR
DEPUTY	BOB SHINDELAR	FOOD UNIT	KAREN HAUTER DEBBY BERDINE; STEVE BALES (T)
SAFETY OFFICER	TAIJA CORSO; MARSHALL BROWN	<b>7. Operations Section:</b>	
INFORMATION OFFICER	JOEL BRUMM; HEATHER APPELHOF	OPS SECTION CHIEF	AARON ROWE, LONNIE NEWTON (T)
LIAISON OFFICER	JEFF SEVIGNEY; JOHN JOHNSON (T) JON MEIER; COLLIN HAFHEY (T)	PLANNING OPS SECTION CHIEF	KURT RANTA, ROB POYNER (T)
HUMAN RESOURCE SPECIALIST	MARGARET DIETRICH	STRATEGIC OPS SECTION CHIEF	TONY ENGEL, MIKE DAVIS (T)
<b>4. Agency/Organization Representative(s):</b>		<b>Branch</b>	<b>I/II</b>
<b>Agency/Organization</b>	<b>Name</b>	BRANCH DIRECTOR	SCOTT EBEL, JESSE BOHNSACK, CODY ACORD (T)
USFS OKA/WEN AGENCY ADMIN	CHRIS FURR;PAUL WILLARD (T)	DIVISION/GROUP	A SHAWN OTTO, CHRIS RAMISKEY (T)
DNR AGENCY ADMIN	LARRY LEACH	DIVISION/GROUP	D BRETT JOHNSON, PAUL KIMBALL (T)
DNR DEPUTY AGENCY ADMIN	WYATT LEIGHTON	<b>Branch</b>	<b>IV</b>
NPS AGENCY ADMIN	DON STRIKER	BRANCH DIRECTOR	TIMOTHY BARNETT
NPS AGENCY REP	DENISE SHULTZ	DIVISION/GROUP	S MATT KENNEDY, JULIUS JACOBSEN (T)
USFS LEAD READ	EIREANN PEDERSON	DIVISION/GROUP	CONTINGENCY/ROADS JASON GREEN, HEIDI SPRENGER ROY BOOTS (T)
NPS LEAD READ	JACK OELFKE	DIVISION/GROUP	FIRING FIDEL VERDUZCO
<b>5. Planning Section:</b>		DIVISION/GROUP	STAGING MIKE EMERICK
CHIEF	HOWARD JOHNSON; JILL JOHNSON	<b>Branch</b>	<b>V</b>
RESOURCES UNIT	JENNIFER NORTON; CHRIS VOLK	BRANCH DIRECTOR	JEROMY WILSON
SITUATION UNIT	MATT PROVENCHER; STEPHEN SEWELL (T)	DIVISION/GROUP	LAKE SHORE JON STONELAKE, NICK WIGLE (T)
DOCUMENTATION UNIT	DEIDRE SMITH	DIVISION/GROUP	BOAT SAM STEINHOUER, SETH ELLIS (T), TOSTEN KULAAS (T)
DEMOBILIZATION UNIT	MIKE HESTON	DIVISION/GROUP	STRUCTURE/IA SCOTT CLEAVE
FIRE BEHAVIOR ANALYST	STEVE ZIEL	<b>7b. Air Operations Branch:</b>	
GIS SPECIALIST	SHAWN BUSHNELL; MIKE TONKEL DEAN RAFTIS	AIR OPS BRANCH DIRECTOR	PAUL BALFOUR;KELLY HEDGEPEETH
TECHNOLOGY SUPPORT SPECIALIST	GEORGE JENKINS; LIBBY EVERETT (T) JUSTIN LEACH (T)	AIR SUPPORT SUPERVISOR	TIM LYDA
INCIDENT METEOROLOGIST	BOB TOBIN; MADDIE KRISTELL (T)	<b>8. Finance/Administration Section:</b>	
AIR RESOURCE ADVISOR	TOM PIERCE	CHIEF	CHRISTINA GOEBEL;STEVE CROW (T)
<b>6. Logistics Section:</b>		TIME UNIT	CHERI FULLER; LARCI MILLER (T)
CHIEF	KEVIN HAUGHTON; THAD FRATER (T) WHIT SPENCER; BRIAN MCGINLEY; KELSEY LIPP	PROCUREMENT UNIT	TODD POWELL; PETER BIDIGARE (T)
SUPPLY UNIT	JOHN KAUPA	COST UNIT	KAY HIGH
FACILITIES UNIT	KAREN ZIRKLE MIKE POST; JOHN DREYER	INC CONTRACT PROJ INSP	ROB HECHINGER
GROUND SUPPORT UNIT	DAVE HARSH TOM FORTIN; HEATH KESSI (T)		
COMMUNICATIONS UNIT	MISSY PARKER; CHARLES BARNES		
<b>9. Prepared By:</b>		<b>Position/Title:</b>	<b>Signature:</b>
Name:	JILL JOHNSON	PSCC	
ICS 203	IAP Page	Date/Time:	



# Fire Weather Forecast



**FORECAST NO:** 31  
**PREDICTION FOR:** 24 Hr Shift  
**SHIFT DATE:** Saturday 7/13/2024  
**TIME AND DATE ISSUED:** 7/12/2024 1900 hrs

**INCIDENT:** Pioneer Fire  
**SIGNED:** *Maddie Kristell*  
Incident Meteorologist

**Discussion:**

**\*\*\*Heat Advisory in Effect Through Sunday Night\*\*\***

The wind pattern has transitioned to a more west to east flow, which has helped bring up the overnight relative humidity recoveries. Minimum RH values won't fare too much better, with mid teen ranges still expected in the afternoon. Temperatures are still above average, prompting the Heat Advisory through Sunday night. Today, expect west to northwest winds in the afternoon, becoming gusty in the evening and late night hours. Watch for gusts in the Manson area of 25 to 30 mph starting around 1600 and make sure tents and loose items are firmly staked down!

**WEATHER FORECAST FOR TODAY:**

**SKY/WEATHER:** Sunny and hot. Smoke in the morning and in valleys, mixing out in the afternoon.

**MAX TEMPERATURE:** 92 to 98 valleys/mid-slopes. 75 to 82 around 5000 feet.

**MIN RH:** 10 to 17 percent valleys/mid-slopes. 18 to 24 percent ridges.

**20 FT WINDS:**

**Lower Valleys:** West to Northwest 5 to 10 mph gusting 20 mph. Gusts of up to 30 mph possible after 1600.

**Mid-slopes and Ridges:** Southwest to northwest in the afternoon 12 to 16 mph gusting to 25 mph.

**HAINES INDEX:** 4 Moderate.

**TRANSPORT WINDS:** Southwest to northwest at 20 mph.

**INVERSION:** Moderate to strong low level inversion lifting by 0900. Mixing Height 10000 ft by 1500.

**TONIGHT:**

**SKY/WEATHER:** Mostly Clear. Smoke will settle in valleys near Chelan and in drainages near the fire.

**MIN TEMPERATURE:** 65 to 72 valleys/mid-slopes. 50 to 55 around 5000 feet.

**MAX RH:** 35 to 40 percent valleys/mid-slopes. 45 to 50 percent ridges around 5000 feet.

**20 FT WINDS:**

**Valleys/Lower Slopes:** Northwest down lake 8 to 12 mph in the evening gusting to 25 mph, especially after midnight.

**Mid-Slopes and Ridges:** Northwest 12 to 16 mph gusting to 25 mph.

**INVERSION:** Developing after 2200 hrs to near 1000 ft. Thermal belt activity likely at the top of the inversion.

**SUNDAY:**

**SKY/WEATHER:** Sunny and still hot.

**MAX TEMPERATURE:** 92 to 98 valleys/mid-slopes. 69 to 78 around 5000 feet.

**MIN RH:** 12 to 19 percent valleys/mid-slopes. 20 to 30 percent ridges.

**20 FT WINDS:**

**Lower Valleys:** West to Northwest 5 to 10 mph gusting 22 mph.

**Mid-slopes and Ridges:** Southwest 14 to 18 mph gusting 25 mph.

**HAINES INDEX:** 4 Moderate.

**TRANSPORT WINDS:** NW 10 to 15 mph.

**Boating concerns Saturday:** Increased northwesterly winds will cause bumpy conditions across the lake in the afternoon. Wave heights to 2 feet have been observed in similar wind conditions.

**Aviation concerns Saturday:** Temperature near 25C at 4000 feet for load calcs. Thermal turbulence likely due to uneven heating of terrain and slopes in addition to mechanical, wind driven turbulence.

Weather observations can be texted to 509-844-7003 or emailed to [bubba57@comcast.net](mailto:bubba57@comcast.net)

## Fire Behavior Forecast # 32

<b>Name of Incident:</b> <b>Pioneer</b>	<b>Administrative Unit:</b> SE Region DNR / Okanogan-Wenatchee NF
<b>Date &amp; Time Issued:</b> July 12, 2024 @ 1900	<b>Operational Period:</b> DAY 07/13/2024
<b>FBAN:</b> Steve Ziel	<b>Signed:</b> /s/ <i>Steve Ziel</i>

***Very little change in Fire Behavior forecast due to similar weather again today. Today's hot, dry, and windy afternoon conditions will result in another elevated fire behavior potential day. Rapid fire spread will occur with wind and/or slope alignment. Expect active burning conditions between 1400 to 2000 hours. Live fuels are starting to contribute to fire intensity on mid and lower slopes; fire spread rate is being dominated by fine dead fuels and cured grasses. Lake effect winds (up/ down lake) dominate lower and mid slopes; the fire is on a dry S/SW aspect with steep side drainages that provide strong upslope winds. Wind/slope alignment and/or lake wind will influence and accelerate fire rate of spread and direction.***

**Weather Summary**  
See attached Fire Weather Forecast

### Fire Behavior Summary

***Fuels in the fire area*** are composed of a mosaic of ***Timber Litter, Grass, Timber with Understory, and Grass/Shrub*** models. The fire is burning in the Rex Creek (2001) fire footprint. Primary tree species include mixed sizes and densities of Douglas Fir and Ponderosa Pine. Local timber litter is compact to fluffy. Brush and understory species include ceanothus, hardwoods, and dog-hair conifer reproduction. **Numerous snags and heavy downed fuel loadings are common throughout all areas.** Live woody and herbaceous fuels are becoming available to contribute to fire intensity, mid slopes and lower. Grasses are partially to fully cured depending on elevation and aspect. Fuel conditions vary by aspect, previous fire history, and elevation. Most N and E aspects include 23-year-old brush and conifer trees with a heavy dead and down component beneath.

***Expect fire behavior to include areas of fingering head fire runs, active flanking, and backing (with rollout) when wind/slope align. In light fuels (grass, pine needle litter) expect rapid fire spread. Heavy fuels are retaining heat serving as ignition sources for surrounding fuels. At higher elevations and north aspects, some grasses are still curing. Very active fire behavior is expected for next several days. Watch out for slope reversal with rapid rates of spread and high intensity burning when it occurs. Expect lee-side spotting as fire reaches ridgelines. Expect group torching with spotting to <.5 mi. where sufficient timber fuels are present.***

**\* FFM= 3%-4%, 1000hr. moisture=10%, Woody fuels 120%, Probability of Ignition—80-90%, Max Spotting 0.5 miles or more with significant column development.**

Fuel Type	Rate of Spread	Flame Length	Backing ROS	Spot Size in 2-hours
...If your work area includes -	(CH/HR = FPM)	Feet	FPM	Acres
GR2 - Moderate load grass/shrub	45 - 50	4 - 5	1-2	250
SH2 – Moderate load shrub	3 - 5	2-3	< 1	3
TU5 - High load Timber w/ Understory	12 - 14	8- 9 (torching)	1	15
TL8 – Long needle timber litter	10-12	4- 6	1 +	10

### Specific Assignments:

**Div. A** – The fire will continue to back and flank to Fish Creek with wrap around spread toward E. Fk. Fish Cr. Expect finger runs.

**Div. S** – Fire in Prince Cr will continue on both sides upstream to Middle Fk. Prince Cr., and may spread toward Cub Lake.

**Shore Protection Group – Monitor up/down lake winds closely.** Monitor activity on lower Meadow Cr. near DP 26. Expect rapid spread in fine fuels when fire becomes active on the lower slopes between Moore Point and Meadow Cr..

**Other Br./Grp.** – Should not be affected by fire activity during the burn period. Monitor smoke direction and amount. Assess fuels.

**\*IA** – Expect rapid rates of spread in light fuels. Ensure good size-up before engaging and base tactics on current as well as expected fire behavior. Review potential ROS and FL by fuel type.

**Air Operations:** Hot. Locally heavy downwind smoke in drainages and aloft. Complex terrain, watch for lee-side turbulence.

### Safety

**Sudden flare-ups are possible, multiple flare-ups may occur with winds. Multiple simultaneous fire situations become critical without LCES. Plan ahead for actions to take; travel takes time!! Review the Watch Out Situations with your resources– can you mitigate??**

**\*\*\*\*\* Good opportunity to review and discuss some “what ifs???.....”. Ensure all parties know what to do, where to go “IF” something happens**

*\*Today's Fire Behavior Forecast contains 704 words written for your situational awareness.*



## Safety Message

13 July 2024

**INCIDENT: Pioneer**

**OPERATIONAL PERIOD: 0700-2100**

In the 1980's a sociologist at the University of Montana, Jon Driessen, studied crews and crew operations and found that the safest and most effective crews had a couple of things in common:

- They had high crew cohesion
- They engaged in a level of safe and effective production they could sustain consistently over long periods

The researchers found that crew cohesion results from:

- High level of trust among crew members
- High crew morale and camaraderie
- Familiarity and predictability among crew members (they know how each other would act in different situations and they know each other's relative strengths and weaknesses)

They also found that safe sustained production results from an effective and safe pace or rhythm and workflow

These levels increase with practice and working together as a unit

Safety Officer: Marshall Brown

Risk Assessment Worksheet				1. Incident Name: <b>PIONEER FIRE</b>				2. Location: <b>WA-SES-000173</b>			
3. Leaders Intent /Specific Objective: Risk Management tools will be used to evaluate tactics in order to provide for firefighter and public safety while implementing actions that have a high probability of success. <b>THIS IS NOT AN EXHAUSTIVE LIST OF RISKS OR CONTROL OPTIONS</b>				4. Prepared By: <b>Marshall Brown</b>				5. Date Prepared: <b>Friday, July 12, 2024</b>			
Signature: <i>Marshall Brown</i>				Title:							
Identify Hazards		Assess Hazards			Risk Control Options		Residual Risk			Decision	Implement
7. Task	8. Hazard	9. Hazard Probability	10. Severity	11. RAC	12. Identify hazard mitigations & abatement measures (press [alt + enter] to add a line)	13. Hazard Probability	14. Severity	15. RAC	16. Risk Acceptable?	17. Hazard Control Assigned to:	
Operational tasks	Medical Treatment and Transport Delay	Almost Certain	Catastrophic	Extremely High	Staff Medical personnel that is commensurate with the operational assignment. Coordination with the MEDL, BOAT Group and AOBDD is essential. Detailed procedures are in place for medical transportation. If boat and/or air resources are unavailable, medical personnel is unavailable, and Risk Management matrix is unacceptable; consider alternative operational tactics and strategies. Use P.A.C.E. model for transportation planning utilizing the ICS206 medical plan. Identify helispots and possible. LEADERS INTENT: ANY WEATHER PARAMETERS OR OPERATIONAL CHANGES THAT WOULD AFFECT TRANSPORT WILL BE COMMUNICATED TO INCIDENT PERSONNEL FOR OPERATIONAL REASSESSMENT.	Possible	Critical	High	YES	All Incident Personnel	
Operational tasks	Hit by Hazards	Possible	Catastrophic	Extremely High	Maintain sound risk management processes and modify tactics and strategy to limit personnel exposure in areas that have probability for roll out and falling material.	Possible	Critical	High	YES	All Incident Personnel	
Perimeter Control	Increased Fire Behavior	Likely	Critical	Extremely High	With red flag warnings, drying of fuels, wind, and rollout potential anticipate increase in fire behavior and adjust tactics and strategies using the risk management process.	Possible	Critical	High	YES	All Operations Personnel	
Ground transportation (Hiking, UTV, Driving)	Motor Vehicle Accident- Struck by/Striking Object/Loss of vehicle control	Possible	Critical	High	Boats: Follow Agency safety policies. Hiking: Pace and situational awareness. UTV: Adhere to Agency UTV Policy Driving: Drive defensively. Chelan July traffic will be busy. Road closures do not have security assigned.	Possible	Critical	High	YES	All Incident Personnel	
Transportation - Boat	Boat sinking from striking an object or capsizing due to high winds or waves- people drowning.	Unlikely	Critical	Moderate	Boat coordinators assigned. Qualified agency and commercial boat captains. PAX safety briefings and pax wear life jackets. Multi pax on board so MOB noticed immediately. Boating plan and float following. Wind speed advisories.	Rare	Moderate	Low			
Helicopter Operations	Aircraft Mishap - General	Unlikely	Catastrophic	High	VALIDATE THAT MISSIONS ARE ESSENTIAL AND MEET INCIDENT OBJECTIVES. TFR IS IN PLACE, IF YOU SEE INTRUSION COMMUNICATE IMMEDIATELY.	Rare	Catastrophic	Moderate	YES	All Operational Personnel	
Firing Operations - Ground	Ingress/Egress/Access	Possible	Critical	High	Use resources qualified for complicated firing operations. Write and follow firing plan. Sufficient radio capacity for all persons on the firing group. Plan and identify contingencies and multiple escape routes.	Unlikely	Critical	Moderate	YES	Alpha/Sierra, Firing Group	
Interactions with Public Safety/Public Relations, Forest closure order growth	Personal Injury/Damage to Public Relations, no roads guards.	Possible	Moderate	Moderate	Travel with the expectation of public on roads and trails. Contact Team Law Enforcement, Safety Officers, and Security when necessary. Disengage from any confrontations.	Possible	Moderate	Moderate	YES	All Incident Personnel	
Initial Attack	Unknown terrain, cooperators, leadership added to existing fire and ambient conditions. Sense of urgency & confusion.	Likely	Critical	Extremely High	Incident IA resources pre-designated. Briefed at incident and dispatched with incident leadership. IA frequencies programmed into radios.	Possible	Critical	High	YES	All Operations Personnel	
All Incident Operational Tasks	Medical - Heat Related Illness/Wildlife	Likely	Moderate	High	Identifying heat related illness early, appropriate pace in extreme temps, shade, fluid intake in appropriate proportions. Discussions/Awareness on wildlife/snakes.	Unlikely	Critical	Moderate	YES	All Personnel	



## PIONEER NW TEAM 12 INITIAL ATTACK RESPONSE PLAN

Per the Pioneer Fire Delegation of Authority, NW Team 12 has responsibility for Initial Attack response within the Pioneer Fire TFR. Additionally, the team will support initial attack efforts surrounding the TFR as requested. This includes ground and air resources. Most of the TFR consists of Forest Service and Park Service land with small parcels of private inholdings. Additional land ownership adjacent to the TFR consists of BLM, State, and private land.

### Pioneer Initial Attack Response Plan:

- IA fires reported near or within the TFR will be reported through CWICC.
- Appropriate agency Duty Officer will be informed of the fire. If the fire is within the TFR and suppression actions are necessary, CWICC will contact Field Operations by phone or radio and provide response instructions. The duty officer is responsible for notifying the agency administrator of decision. Order of contact:
  - CWICC will contact Field Ops Aaron Rowe at 509-679-5378 or Field Ops trainee Lonnie Newton at 208-501-4019
  - If neither Field Ops can be reached by phone, call Field Ops on radio. If not reachable on radio, contact Pioneer Communications and have them relay message.
  - If no contact can be established with Field Ops, contact Planning Ops Kurt Ranta at 360-708-5227 or Planning Ops trainee Rob Poyner at 425-512-2621.
- Air Operations and/or Division/Group Supervisor assigned to the division/group nearest the IA location will be notified by Field Operations and respond with assigned resources.
- Local forest or state Initial Attack frequencies will be used and provided in the IAP Communications Plan.
- The same processes will be used for fires outside of TFR if assistance from Pioneer Fire resources is requested.
- Any air resources used on initial attack or support missions other than Pioneer will be on a lend/lease arrangement.
- All resources in Structure/IA Group are available for Initial Attack response. Other divisions/groups may have resources also identified for IA response. Number and type of resources mobilized to a new start will be determined by anticipated or requested need. Resources will be led by overhead at the Strike Team Leader level or above.

### Process as written in 204 comments:

- All resources in Structure/IA Group are available for Initial Attack response per the Pioneer Fire IA Response Plan. Number and type of resources mobilized to a new start will be determined by anticipated or requested need. Resources will be led by overhead at the Strike Team Leader level or above.
  - If Initial Attack occurs within the TFR, Wenatchee Dispatch will coordinate with appropriate duty officer and contact Field Ops for response.
  - Field Operations will contact the Structure/IA Group Supervisor and/or Air Operations to coordinate response to new start.
  - Local forest Initial Attack frequencies will be used and provided in the IAP Communications Plan
  - The same process will be used for fires outside of TFR if assistance from Pioneer fire resources is requested.

**Division/Group Assignment List (ICS 204 WF)**  
**Controlled Unclassified Information//Basic**

<b>1. Incident Name:</b>				<b>3.</b>		
PIONEER				Branch:	Division/Group:	
<b>2. Operational Period: 0700-2100</b>						
Date/Time From: 07/13/2024 0700 SAT		Date/Time To: 07/13/2024 2100 SAT		I/II	A	
<b>4. Operations Personnel</b>						
<b>OPERATIONS CHIEF</b>		AARON ROWE, LONNIE NEWTON (T)		<b>BRANCH DIRECTOR</b>		SCOTT EBEL, JESSE BOHNSACK CODY ACORD (T)
<b>DIVISION/GROUP SUPERVISOR</b>		SHAWN OTTO, CHRIS RAMISKEY (T)		<b>AIR OPS BRANCH DIRECTOR</b>		PAUL BALFOUR
<b>5. Resources Assigned this Period</b>						
Strike Team / Task Force / Resource Designator	LWD	Leader	Number Persons	Drop Off PT./Time	Pick Up PT./Time	
O-352 SOFC	07/16	KRIS CRODDY	1	LUCERNE/0700	LUCERNE/2100	
O-492 SOFC	07/24	LEA WOFFORD	1	LUCERNE/0700	LUCERNE/2100	
O-516 TFLD	07/26	SHANNON CLARK	1	LUCERNE/0700	LUCERNE/2100	
O-447 TFLD (T)	07/22	EHREN E PHILLIPS	1	LUCERNE/0700	LUCERNE/2100	
A-99.5 HECM	07/13	CURTIS PROPST	1	LUCERNE/0700	LUCERNE/2100	
A-99.7 HECM	07/13	ZACHARY LAMPE	1	LUCERNE/0700	LUCERNE/2100	
C-30 CRW1 ENTIAT IHC	07/19	DAN PICKARD	23	LUCERNE/0700	LUCERNE/2100	
C-36 CRW1 ZIGZAG IHC	07/20	SANDRA SPERRY	25	DP 22, MOORE POINT/0700	DP 22, MOORE POINT/2100	
C-28 CR2I CRD	07/15	TYLER HERDMAN	22	LUCERNE/0700	LUCERNE/2100	
C-50 CR2I GRAYBACK FORESTRY	07/25	GAVIN SAEMAN	20	LUCERNE/0700	LUCERNE/2100	
A-78 UAR3 UR31	07/22	PATRICK CLARK	4	LUCERNE/0700	LUCERNE/2100	
O-359 MEDIC 12	07/16	ETHAN BIEDERMAN	1	LUCERNE/0700	LUCERNE/2100	
O-417 MEDIC 14	07/21	LAURA KRAUSE	1	LUCERNE/0700	LUCERNE/2100	
O-310 EMT 5	07/14	DAVE REPNIK	1	LUCERNE/0700	LUCERNE/2100	
<b>8. Division/Group Communication Summary</b>						
Function	Channel	RX Frequency N/W	RX Tone/NAC	TX Frequency N/W	TX Tone/NAC	Mode
COMMAND	CMD 8	169.5375	123.0	164.7125	123.0	A
COMMAND	CMD 9	170.4500	123.0	168.1000	123.0	A
TACTICAL	TAC 2	168.2000	123.0	168.2000	123.0	A
AIR TO GROUND	A/G PRI	169.1500	000.0	169.1500	000.0	A
AIR TO GROUND	A/G SEC	168.4000	000.0	168.4000	000.0	A
<b>9. Prepared By (Resource Unit Leader)</b>			<b>Approved By (Planning Section Chief)</b>		<b>Date</b>	<b>Time</b>
JENNIFER NORTON			JILL JOHNSON		07/12/2024	2100

**Division/Group Assignment List (ICS 204 WF)**  
**Controlled Unclassified Information//Basic**

<b>1. Incident Name:</b>			<b>3.</b>			
PIONEER			<b>Branch:</b>		<b>Division/Group:</b>	
<b>2. Operational Period:</b> 0700-2100			I/II		A	
Date/Time From: 07/13/2024 0700 SAT	Date/Time To: 07/13/2024 2100 SAT					
<b>4. Operations Personnel</b>						
<b>OPERATIONS CHIEF</b>		AARON ROWE, LONNIE NEWTON (T)		<b>BRANCH DIRECTOR</b>		SCOTT EBEL, JESSE BOHNSACK CODY ACORD (T)
<b>DIVISION/GROUP SUPERVISOR</b>		SHAWN OTTO, CHRIS RAMISKEY (T)		<b>AIR OPS BRANCH DIRECTOR</b>		PAUL BALFOUR
<b>5. Resources Assigned this Period</b>						
Strike Team / Task Force / Resource Designator	LWD	Leader	Number Persons	Drop Off PT./Time	Pick Up PT./Time	
E-84 VUTV KIRCHER AND SHERMAN				LUCERNE/0700	LUCERNE/2100	
E-85 VUTV KIRCHER AND SHERMAN				LUCERNE/0700	LUCERNE/2100	
<b>6. Control Operations/Work Assignments:</b>						
<p><b>TASK:</b> Use multiple tactics to slow fire spread in Meadow Creek where terrain and fuels allow for highest probability of success. Monitor fire progression north and west as fire progresses to high elevations. Implement point protection on federal and private infrastructure.</p> <p><b>PURPOSE:</b> To slow fire progression, provide time for suppression tactics, and prevent fire spread towards Stehekin.</p> <p><b>END STATE:</b> Fire impacts to critical values, including private inholdings, federal infrastructure and Stehekin are minimized.</p>						
<b>7. Special Instructions:</b>						
<p>-In large or long term spike camps use helicopters, boats, or pack stock to deliver portable backcountry latrines and remove human waste if necessary. If camp does not have adequate pack, boat, or air support for human waste management, establish community latrines well away from water sources and common areas. Use human waste bags, if necessary.</p> <p>-Minimize ground disturbance on the Moore Point and Meadow Creek alluvial fans in order to protect sensitive resources.</p> <p>-Hose used from Prince Creek to Moore Pt: contaminated with invasive plants. Do not reuse. Backhaul to Moore Pt DP22 and store in "infested hose" area at Moore Pt until decontaminated.</p> <p>-Ensure hazard mitigations and IWI protocols are in place before taking action.</p> <p>-** Denotes available for Initial Attack</p>						
<b>8. Division/Group Communication Summary</b>						
Function	Channel	RX Frequency N/W	RX Tone/NAC	TX Frequency N/W	TX Tone/NAC	Mode
COMMAND	CMD 8	169.5375	123.0	164.7125	123.0	A
COMMAND	CMD 9	170.4500	123.0	168.1000	123.0	A
TACTICAL	TAC 2	168.2000	123.0	168.2000	123.0	A
AIR TO GROUND	A/G PRI	169.1500	000.0	169.1500	000.0	A
AIR TO GROUND	A/G SEC	168.4000	000.0	168.4000	000.0	A
<b>9. Prepared By (Resource Unit Leader)</b>			<b>Approved By (Planning Section Chief)</b>		<b>Date</b>	<b>Time</b>
JENNIFER NORTON			JILL JOHNSON		07/12/2024	2100

## Division/Group Assignment List (ICS 204 WF)

Controlled Unclassified Information//Basic

<b>1. Incident Name:</b>				<b>3.</b>			
PIONEER				<b>Branch:</b>  I/II		<b>Division/Group:</b>  D	
<b>2. Operational Period:</b> 0700-2100							
Date/Time From: 07/13/2024 0700 SAT		Date/Time To: 07/13/2024 2100 SAT					
<b>4. Operations Personnel</b>							
<b>OPERATIONS CHIEF</b>		AARON ROWE, LONNIE NEWTON (T)		<b>BRANCH DIRECTOR</b>		SCOTT EBEL, JESSE BOHNSACK CODY ACORD (T)	
<b>DIVISION/GROUP SUPERVISOR</b>		BRETT JOHNSON, PAUL KIMBALL (T)		<b>AIR OPS BRANCH DIRECTOR</b>		PAUL BALFOUR	
<b>5. Resources Assigned this Period</b>							
Strike Team / Task Force / Resource Designator		LWD	Leader	Number Persons	Drop Off PT./Time	Pick Up PT./Time	
O-353 SOFC		07/17	PHILLIP BORDELON	1	STEHEKIN/0700	STEHEKIN/0700	
O-423 TFLD		07/16	BRYCE HAVERKAMP	1	STEHEKIN/0700	STEHEKIN/0700	
O-448 TFLD (T)		07/22	ANDY MENDIGUREN	1	STEHEKIN/0700	STEHEKIN/0700	
A-94.5 HECM		07/19	BRYCE JONES	1	STEHEKIN/0700	STEHEKIN/0700	
A-94.6 HMGB		07/19	MATHEW CARTER	1	STEHEKIN/0700	STEHEKIN/0700	
O-388 SMOD BANDELIER		07/22	JOSH O'COY	8	STEHEKIN/0700	STEHEKIN/0700	
**O-377 WFM1 WHISKEYTOWN		07/21	WARREN SWAB	8	STEHEKIN/0700	STEHEKIN/0700	
O-402 WFM2 YOSEMITE		07/21	JOHN O'COY	8	STEHEKIN/0700	STEHEKIN/0700	
O-372 LEAD READ		07/19	JACK OELFKE	1	STEHEKIN/0700	STEHEKIN/0700	
O-523 ARCH		07/25	THEO SHAHEEN- MCCONNELL	1	STEHEKIN/0700	STEHEKIN/0700	
O-370 ARCH (T)		07/18	HENRY EATON	1	STEHEKIN/0700	STEHEKIN/0700	
O-376 REAF		07/18	ROGER CHRISTOPHERSEN	1	STEHEKIN/0700	STEHEKIN/0700	
O-371 REAF (T)		07/20	HEATHER RICKLEFF	1	STEHEKIN/0700	STEHEKIN/0700	
O-165 REMS 2		07/23	DAVID LAPEARL	4	STEHEKIN/0700	STEHEKIN/0700	
E-89 DRIVER BIG STATE WILDFIRE		07/27	BENJERMIN RIGGS	1	STEHEKIN/0700	STEHEKIN/0700	
<b>8. Division/Group Communication Summary</b>							
Function	Channel	RX Frequency N/W	RX Tone/NAC	TX Frequency N/W	TX Tone/NAC	Mode	
COMMAND	CMD 8	169.5375	123.0	164.7125	123.0	A	
COMMAND	CMD 9	170.4500	123.0	168.1000	123.0	A	
TACTICAL	TAC 1	168.0500	123.0	168.0500	123.0	A	
AIR TO GROUND	A/G PRI	169.1500	000.0	169.1500	000.0	A	
AIR TO GROUND	A/G SEC	168.4000	000.0	168.4000	000.0	A	
<b>9. Prepared By (Resource Unit Leader)</b>			<b>Approved By (Planning Section Chief)</b>			<b>Date</b>	<b>Time</b>
JENNIFER NORTON			JILL JOHNSON			07/12/2024	2100

**Division/Group Assignment List (ICS 204 WF)**  
**Controlled Unclassified Information//Basic**

<b>1. Incident Name:</b>		<b>3.</b>	
PIONEER		<b>Branch:</b>	<b>Division/Group:</b>
<b>2. Operational Period:</b> 0700-2100		I/II	D
Date/Time From: 07/13/2024 0700 SAT	Date/Time To: 07/13/2024 2100 SAT		

<b>4. Operations Personnel</b>			
<b>OPERATIONS CHIEF</b>	AARON ROWE, LONNIE NEWTON (T)	<b>BRANCH DIRECTOR</b>	SCOTT EBEL, JESSE BOHNSACK CODY ACORD (T)
<b>DIVISION/GROUP SUPERVISOR</b>	BRETT JOHNSON, PAUL KIMBALL (T)	<b>AIR OPS BRANCH DIRECTOR</b>	PAUL BALFOUR

**6. Control Operations/Work Assignments:**

**TASK:** Continue road prep and work around Stehekin Valley Ranch in Stehekin.  
**PURPOSE:** To protect the community of Stehekin, surrounding infrastructure and historic values from fire impacts.  
**END STATE:** Fire impacts to critical values in and around Stehekin have been minimized.

**7. Special Instructions:**

- All operational personnel working on USFS lands will need to conduct a thorough inspection for invasive species seeds on boots including laces, clothing, and gear prior to entering NPS lands.
- Only fresh (direct from the cache) hose should be utilized on NPS lands to prevent the transport of invasive species seeds.
- Hose used on USFS lands should not be used on NPS lands and hose used on NPS lands should not be used on USFS lands to prevent the spread of invasives species seeds.
- Cargo loads being transported onto NPS lands should be inspected for invasive weed seed prior to flight.
- NPS Resource Avoidance Area Flagging is yellow with red polka dots. Contact NPS READs before working in areas where this flagging is present.
- Ensure hazard mitigations and IWI protocols are in place before taking action.
- \*\* Denotes available for Initial Attack
- Designated Resources are available for Initial Attack response per the Pioneer Fire IA Response Plan. Number and type of resources mobilized to a new start will be determined by anticipated or requested need. Resources will be led by overhead at the Strike Team Leader level or above.
- If Initial Attack occurs within the TFR, Wenatchee Dispatch will coordinate with appropriate duty officer and contact Field Ops for response.

- Field Operations will contact the Structure/IA Group Supervisor and/or Air Operations to coordinate response to new start.
- Local forest Initial Attack frequencies will be used and provided in the IAP Communications Plan
- The same process will be used for fires outside of TFR if assistance from Pioneer fire resources is requested.

Insurance Resources:  
 Wildfire Defense Systems - E631 & BOAT - JT Wensman (4)

<b>8. Division/Group Communication Summary</b>						
Function	Channel	RX Frequency N/W	RX Tone/NAC	TX Frequency N/W	TX Tone/NAC	Mode
COMMAND	CMD 8	169.5375	123.0	164.7125	123.0	A
COMMAND	CMD 9	170.4500	123.0	168.1000	123.0	A
TACTICAL	TAC 1	168.0500	123.0	168.0500	123.0	A
AIR TO GROUND	A/G PRI	169.1500	000.0	169.1500	000.0	A
AIR TO GROUND	A/G SEC	168.4000	000.0	168.4000	000.0	A
<b>9. Prepared By (Resource Unit Leader)</b>		<b>Approved By (Planning Section Chief)</b>		<b>Date</b>	<b>Time</b>	
JENNIFER NORTON		JILL JOHNSON		07/12/2024	2100	

# Division/Group Assignment List (ICS 204 WF)

Controlled Unclassified Information//Basic

<b>1. Incident Name:</b>				<b>3.</b>			
PIONEER				<b>Branch:</b>		<b>Division/Group:</b>	
<b>2. Operational Period:</b> 0700-2100				IV		S	
Date/Time From: 07/13/2024 0700 SAT		Date/Time To: 07/13/2024 2100 SAT					
<b>4. Operations Personnel</b>							
<b>OPERATIONS CHIEF</b>		AARON ROWE, LONNIE NEWTON (T)		<b>BRANCH DIRECTOR</b>		TIM BARNETT	
<b>DIVISION/GROUP SUPERVISOR</b>		MATT KENNEDY, JULIUS JACOBSEN (T)		<b>AIR OPS BRANCH DIRECTOR</b>		PAUL BALFOUR	
<b>5. Resources Assigned this Period</b>							
Strike Team / Task Force / Resource Designator		LWD	Leader	Number Persons	Drop Off PT./Time	Pick Up PT./Time	
O-425 TFLD		07/23	JON WILLOUGHBY	1	ICP/0700	ICP/2100	
O-249 TFLD (T)		07/16	MARK HARPER	1	ICP/0700	ICP/2100	
**O-470 HEQB		07/23	AUSTIN NOBLES	1	CAMP 4 SPIKE/0700	CAMP 4 SPIKE/2100	
C-35 CRW1 UNION IHC		07/20	ERIC JORGENSON	22	H40/0700	H40/2100	
**C-34 CR2I WALLOWA		07/20	KIRA SANTULLI	20	ICP/0700	ICP/2100	
C-43 CR2I DIAMOND FIRE NCC 11B		07/22	LARRY ECKELMAN	20	ICP/0700	ICP/2100	
**E-280 ENG6 RAINSTORM		07/23	GARRETT RAINS	3	ICP/0700	ICP/2100	
E-309 ENG4 LATE SUMMERS WILDFIRE		07/23	NOLAN ETTENHOFER	3	ICP/0700	ICP/2100	
E-73 WTS1 STRAND TENDERS		07/22	GARRETT STRAND	1	CAMP 4 SPIKE/0700	CAMP 4 SPIKE/2100	
E-78 WTS2 KING HYDROSEEDING		07/23	BILL BLACK	1	CAMP 4 SPIKE/0700	CAMP 4 SPIKE/2100	
E-174 WTS2		07/19	KEITH HIATT	1	ICP/0700	ICP/2100	
**E-92 DZR3 BATCHELOR EXCAVATION		07/14	JAY BATCHELOR	2	ICP/0700	ICP/2100	
O-485 FOBS		07/22	KELLY LEWIS	1	JR POINT/0700	JR POINT/2100	
O-488 FOBS (T)		07/23	LEE VENNING	1	JR POINT/0700	JR POINT/2100	
O-43 REMS 1		07/23	RICK BOSTAIN	4	CAMP 4 SPIKE/0700	CAMP 4 SPIKE/2100	
O-449 RAT 1		07/22	EMMA GARRETT	2	ICP/0700	CAMP 4 SPIKE/2100	
O-358 MEDIC 11		07/16	SAVANAH MCLAUGHLIN	1	CAMP 4 SPIKE/0700	CAMP 4 SPIKE/2100	
<b>8. Division/Group Communication Summary</b>							
Function	Channel	RX Frequency N/W	RX Tone/NAC	TX Frequency N/W	TX Tone/NAC	Mode	
COMMAND	CMD 7	168.4750	123.0	165.4000	123.0	A	
COMMAND	CMD 10	170.0125	123.0	165.2500	123.0	A	
COMMAND	CMD 11	170.4125	123.0	165.9625	123.0	A	
COMMAND	CMD 12	170.6875	123.0	166.5750	123.0	A	
TACTICAL	TAC 1	168.0500	123.0	168.0500	123.0	A	
AIR TO GROUND	A/G PRI	169.1500	000.0	169.1500	000.0	A	
AIR TO GROUND	A/G SEC	168.4000	000.0	168.4000	000.0	A	
<b>9. Prepared By (Resource Unit Leader)</b>			<b>Approved By (Planning Section Chief)</b>			<b>Date</b>	<b>Time</b>
JENNIFER NORTON			JILL JOHNSON			07/12/2024	2100

# Division/Group Assignment List (ICS 204 WF)

Controlled Unclassified Information//Basic

<b>1. Incident Name:</b>				<b>3.</b>			
PIONEER				<b>Branch:</b>		<b>Division/Group:</b>	
<b>2. Operational Period:</b> 0700-2100				IV		S	
Date/Time From: 07/13/2024 0700 SAT		Date/Time To: 07/13/2024 2100 SAT					
<b>4. Operations Personnel</b>							
<b>OPERATIONS CHIEF</b>		AARON ROWE, LONNIE NEWTON (T)		<b>BRANCH DIRECTOR</b>		TIM BARNETT	
<b>DIVISION/GROUP SUPERVISOR</b>		MATT KENNEDY, JULIUS JACOBSEN (T)		<b>AIR OPS BRANCH DIRECTOR</b>		PAUL BALFOUR	
<b>5. Resources Assigned this Period</b>							
Strike Team / Task Force / Resource Designator		LWD	Leader		Number Persons	Drop Off PT./Time	Pick Up PT./Time
O-416 MEDIC 15		07/21	ROBERT RUSZALA		1	ICP/0700	CAMP 4 SPIKE/2100
E-260 AMBO-3		07/22	KYLE KEMERER		2	ICP/0700	ICP/2100
E-18 VUTV CM BACKCOUNTRY							
E-93 VUTV KWIK RESPONSE SUPPORT							
E-149 VUTV TOP GUN RES POLARIS							
<b>6. Control Operations/Work Assignments:</b>							
<p><b>TASK:</b> Continue handline construction and pre from DP-51 to Lake Chelan. Finish hoselay and prep on Nelson handline</p> <p><b>PURPOSE:</b> To protect values down lake by establishing a barrier to fire spread.</p> <p><b>END STATE:</b> Control line anchored from H-40 to Lake Chelan.</p>							
<b>7. Special Instructions:</b>							
<p>-Ensure hazard mitigations and IWI protocols are in place before taking action.</p> <p>-** Denotes available for Initial Attack</p> <p>-Designated resources are available for Initial Attack response per the Pioneer Fire IA Response Plan. Number and type of resources mobilized to a new start will be determined by anticipated or requested need. Resources will be led by overhead at the Strike Team Leader level or above.</p> <p>-If Initial Attack occurs within the TFR, Wenatchee Dispatch will coordinate with appropriate duty officer and contact Field Ops for response.</p> <ul style="list-style-type: none"> <li>Field Operations will contact the Structure/IA Group Supervisor and/or Air Operations to coordinate response to new start.</li> <li>Local forest Initial Attack frequencies will be used and provided in the IAP Communications Plan.</li> <li>The same process will be used for fires outside of TFR if assistance from Pioneer fire resources is requested.</li> </ul>							
<b>8. Division/Group Communication Summary</b>							
Function	Channel	RX Frequency N/W	RX Tone/NAC	TX Frequency N/W	TX Tone/NAC	Mode	
COMMAND	CMD 7	168.4750	123.0	165.4000	123.0	A	
COMMAND	CMD 10	170.0125	123.0	165.2500	123.0	A	
COMMAND	CMD 11	170.4125	123.0	165.9625	123.0	A	
COMMAND	CMD 12	170.6875	123.0	166.5750	123.0	A	
TACTICAL	TAC 1	168.0500	123.0	168.0500	123.0	A	
AIR TO GROUND	A/G PRI	169.1500	000.0	169.1500	000.0	A	
AIR TO GROUND	A/G SEC	168.4000	000.0	168.4000	000.0	A	
<b>9. Prepared By (Resource Unit Leader)</b>			<b>Approved By (Planning Section Chief)</b>			<b>Date</b>	<b>Time</b>
JENNIFER NORTON			JILL JOHNSON			07/12/2024	2100

## Division/Group Assignment List (ICS 204 WF)

Controlled Unclassified Information//Basic

<b>1. Incident Name:</b>				<b>3.</b>			
PIONEER				<b>IV</b>		<b>CONTINGENCY/ ROADS</b>	
<b>2. Operational Period:</b> 0700-2100							
Date/Time From: 07/13/2024 0700 SAT		Date/Time To: 07/13/2024 2100 SAT					
<b>4. Operations Personnel</b>							
<b>OPERATIONS CHIEF</b>		AARON ROWE, LONNIE NEWTON (T)		<b>BRANCH DIRECTOR</b>		TIM BARNETT	
<b>DIVISION/GROUP SUPERVISOR</b>		JASON GREEN, HEIDI SPRENGER ROY BOOTS (T)		<b>AIR OPS BRANCH DIRECTOR</b>		PAUL BALFOUR	
<b>5. Resources Assigned this Period</b>							
Strike Team / Task Force / Resource Designator		LWD	Leader	Number Persons	Drop Off PT./Time	Pick Up PT./Time	
O-455 SOF2		07/22	PAUL BRNA	1	ICP/0700	ICP/2100	
O-426 TFLD		07/22	MITCHELL STILES	1	ICP/0700	ICP/2100	
O-468 TFLD		07/23	JENNY ALEXANDER	1	ICP/0700	ICP/2100	
**O-457 TFLD		07/21	JEFFERY DICKINSON	1	ICP/0700	ICP/2100	
O-518 TFLD (T)		07/24	AUSTIN R MCDONALD	1	ICP/0700	ICP/2100	
O-333 HEQB		07/15	JED NEUMEIER	1	ICP/0700	ICP/2100	
O-429 HEQB		07/22	JONATHAN MCFARLAND	1	ICP/0700	ICP/2100	
O-430 HEQB		07/21	TYLER F KUIKEN	1	ICP/0700	ICP/2100	
O-431 HEQB		07/21	DAN POOLE	1	ICP/0700	ICP/2100	
O-445 HEQB (T)		07/21	KELSIE P RANTZOW	1	ICP/0700	ICP/2100	
O-540 HEQB (T)		07/24	BENJAMIN BOUCHER	1	ICP/0700	ICP/2100	
O-344 FELB		07/15	JACOB HARVEY	1	ICP/0700	ICP/2100	
O-433 FMOD BROTHERS FIRE		07/24	JUSTIN OFFREDI	2	ICP/0700	ICP/2100	
O-434 FMOD		07/21	JOHN DELUNA	2	ICP/0700	ICP/2100	
**C-32 CR2I PATRICK		07/19	GARTH CHAMBERS	20	ICP/0700	ICP/2100	
C-33 CR2I NORTH PACIFIC		07/20	JOSE PEREZ	20	ICP/0700	ICP/2100	
<b>8. Division/Group Communication Summary</b>							
Function	Channel	RX Frequency N/W	RX Tone/NAC	TX Frequency N/W	TX Tone/NAC	Mode	
COMMAND	CMD 7	168.4750	123.0	165.4000	123.0	A	
COMMAND	CMD 8	169.5375	123.0	164.7125	123.0	A	
COMMAND	CMD 10	170.0125	123.0	165.2500	123.0	A	
COMMAND	CMD 11	170.4125	123.0	165.9625	123.0	A	
TACTICAL	TAC 2	168.2000	123.0	168.2000	123.0	A	
TACTICAL	TAC 5	166.7750	123.0	166.7750	123.0	A	
AIR TO GROUND	A/G PRI	169.1500	000.0	169.1500	000.0	A	
AIR TO GROUND	A/G SEC	168.4000	000.0	168.4000	000.0	A	
<b>9. Prepared By (Resource Unit Leader)</b>			<b>Approved By (Planning Section Chief)</b>			<b>Date</b>	<b>Time</b>
JENNIFER NORTON			JILL JOHNSON			07/12/2024	2100



**Division/Group Assignment List (ICS 204 WF)**  
**Controlled Unclassified Information//Basic**

<b>1. Incident Name:</b>				<b>3.</b>		
PIONEER				Branch:  IV	Division/Group:  CONTINGENCY/ ROADS	
<b>2. Operational Period:</b> 0700-2100						
Date/Time From: 07/13/2024 0700 SAT		Date/Time To: 07/13/2024 2100 SAT				
<b>4. Operations Personnel</b>						
<b>OPERATIONS CHIEF</b>		AARON ROWE, LONNIE NEWTON (T)		<b>BRANCH DIRECTOR</b>		TIM BARNETT
<b>DIVISION/GROUP SUPERVISOR</b>		JASON GREEN, HEIDI SPRENGER ROY BOOTS (T)		<b>AIR OPS BRANCH DIRECTOR</b>		PAUL BALFOUR
<b>5. Resources Assigned this Period</b>						
Strike Team / Task Force / Resource Designator	LWD	Leader	Number Persons	Drop Off PT./Time	Pick Up PT./Time	
**E-279 ENG6 LATE SUMMERS	07/22	JENSEN BOVEE	3	ICP/0700	ICP/2100	
**E-235 ENG6 PIKE	07/22	ANDREW L DUZET	4	ICP/0700	ICP/2100	
E-310 ENG6 BAILEY ENTERPRISES	07/24	CLIVE BAILEY	3	ICP/0700	ICP/2100	
E-324 ENG6 METHOW RIVER WILD FIRE	07/25	JOHN NEUNEKER	3	ICP/0700	ICP/2100	
E-76 WTS2 MOUNTAIN VIEW WILDFIRE	07/17	WICK FIFE	2	ICP/0700	ICP/2100	
E-83 WTS2 KING HYDROSEEDING	07/24	COSMO TAN	1	ICP/0700	ICP/2100	
E-157 WTS2 PINE MOUNTAIN EXC	07/24	BOB GOSS	1	ICP/0700	ICP/2100	
E-172 WTS2 UPPER VALLEY	07/24	RICHARD REYNOLDS	1	ICP/0700	ICP/2100	
E-173 WTS2 RIDGE TOP IRON	07/24	TODD DORMAIER	1	ICP/0700	ICP/2100	
E-330 WTS2 MVP TEAM	07/25	DALE KONRAD		ICP/0700	ICP/2100	
E-331 WTS2 DAVID RAINS	07/25	RON LAYMANCE	1	ICP/0700	ICP/2100	
E-334 WTS2 PANTHER RIDGE	07/25	DOUG STONE	1	ICP/0700	ICP/2100	
E-236 DZR2 TOP RAIL	07/21	DAIN LUKEHART	2	ICP/0700	ICP/2100	
E-237 DZR2 HAYWIRE SERVICES	07/21	KEVIN HANSON	2	ICP/0700	ICP/2100	
E-205 DZR3 DOUGLAS LOGGING	07/20	STEVE DOUGLAS	1	ICP/0700	ICP/2100	
<b>8. Division/Group Communication Summary</b>						
Function	Channel	RX Frequency N/W	RX Tone/NAC	TX Frequency N/W	TX Tone/NAC	Mode
COMMAND	CMD 7	168.4750	123.0	165.4000	123.0	A
COMMAND	CMD 8	169.5375	123.0	164.7125	123.0	A
COMMAND	CMD 10	170.0125	123.0	165.2500	123.0	A
COMMAND	CMD 11	170.4125	123.0	165.9625	123.0	A
TACTICAL	TAC 2	168.2000	123.0	168.2000	123.0	A
TACTICAL	TAC 5	166.7750	123.0	166.7750	123.0	A
AIR TO GROUND	A/G PRI	169.1500	000.0	169.1500	000.0	A
AIR TO GROUND	A/G SEC	168.4000	000.0	168.4000	000.0	A
<b>9. Prepared By (Resource Unit Leader)</b>			<b>Approved By (Planning Section Chief)</b>		<b>Date</b>	<b>Time</b>
JENNIFER NORTON			JILL JOHNSON		07/12/2024	2100

**Division/Group Assignment List (ICS 204 WF)**  
**Controlled Unclassified Information//Basic**

<b>1. Incident Name:</b>				<b>3.</b>		
PIONEER				Branch:  IV	Division/Group:  CONTINGENCY/ ROADS	
<b>2. Operational Period:</b> 0700-2100						
Date/Time From: 07/13/2024 0700 SAT		Date/Time To: 07/13/2024 2100 SAT				
<b>4. Operations Personnel</b>						
<b>OPERATIONS CHIEF</b>		AARON ROWE, LONNIE NEWTON (T)		<b>BRANCH DIRECTOR</b>		TIM BARNETT
<b>DIVISION/GROUP SUPERVISOR</b>		JASON GREEN, HEIDI SPRENGER ROY BOOTS (T)		<b>AIR OPS BRANCH DIRECTOR</b>		PAUL BALFOUR
<b>5. Resources Assigned this Period</b>						
Strike Team / Task Force / Resource Designator	LWD	Leader	Number Persons	Drop Off PT./Time	Pick Up PT./Time	
E-268 DZR3 REMSBERG LOGGING	07/21	CHRIS JACK	2	ICP/0700	ICP/2100	
E-269 DZR3	07/22	JEFFERY ROBERT	2	ICP/0700	ICP/2100	
E-270 DZR1 SILVER NICKLE LOGGING	07/23	DONNIE COMBS	2	ICP/0700	ICP/2100	
E-271 DZR2 DUKES EQUIPMENT	07/22	TYSON HAUBER	2	ICP/0700	ICP/2100	
E-103 MBM2 MARCON TIMBER	07/22	JUSTIN HARRIS	2	ICP/0700	ICP/2100	
E-105 MBM2 JUSTIN PITTS TRUCKING	07/14	ADAM BERGSTROM	2	ICP/0700	ICP/2100	
E-151 MBM2 DUKES EQUIPMENT	07/23	CHRIS BOYLES	2	ICP/0700	ICP/2100	
E-152 MBM2 AXSUS	07/23	JOHN CISNEROS	2	ICP/0700	ICP/2100	
E-238 MBM2 WILDFIRE	07/21	MIKE JOHNSON	2	ICP/0700	ICP/2100	
E-102 SKG2 DUKES EQUIPMENT	07/14	JUSTIN DURSTON	2	ICP/0700	ICP/2100	
E-154 SKG2 WESTERN	07/23	RICK LAUMAN	2	ICP/0700	ICP/2100	
E-155 SKG2 MOUNTAIN VIEW	07/21	BRYON SCRIBNER	2	ICP/0700	ICP/2100	
E-208 SKG2 NW DIESEL DUDES	07/25	ROBERT LUNYOU	2	ICP/0700	ICP/2100	
E-278 SKG2 DUKES EQUIPMENT	07/21	MATT SVEEN	2	ICP/0700	ICP/2100	
E-274 SKD1 SILVER-NICKEL LOGGING	07/23	WYATT PERSHING	2	ICP/0700	ICP/2100	
E-275 SKD1 SILVER-NICKEL LOGGING	07/23	KODY AYERS	2	ICP/0700	ICP/2100	
<b>8. Division/Group Communication Summary</b>						
Function	Channel	RX Frequency N/W	RX Tone/NAC	TX Frequency N/W	TX Tone/NAC	Mode
COMMAND	CMD 7	168.4750	123.0	165.4000	123.0	A
COMMAND	CMD 8	169.5375	123.0	164.7125	123.0	A
COMMAND	CMD 10	170.0125	123.0	165.2500	123.0	A
COMMAND	CMD 11	170.4125	123.0	165.9625	123.0	A
TACTICAL	TAC 2	168.2000	123.0	168.2000	123.0	A
TACTICAL	TAC 5	166.7750	123.0	166.7750	123.0	A
AIR TO GROUND	A/G PRI	169.1500	000.0	169.1500	000.0	A
AIR TO GROUND	A/G SEC	168.4000	000.0	168.4000	000.0	A
<b>9. Prepared By (Resource Unit Leader)</b>			<b>Approved By (Planning Section Chief)</b>		<b>Date</b>	<b>Time</b>
JENNIFER NORTON			JILL JOHNSON		07/12/2024	2100

**Division/Group Assignment List (ICS 204 WF)**  
**Controlled Unclassified Information//Basic**

<b>1. Incident Name:</b>				<b>3.</b>		
PIONEER				Branch:  IV	Division/Group:  CONTINGENCY/ ROADS	
<b>2. Operational Period:</b> 0700-2100						
Date/Time From: 07/13/2024 0700 SAT		Date/Time To: 07/13/2024 2100 SAT				
<b>4. Operations Personnel</b>						
<b>OPERATIONS CHIEF</b>		AARON ROWE, LONNIE NEWTON (T)		<b>BRANCH DIRECTOR</b>		TIM BARNETT
<b>DIVISION/GROUP SUPERVISOR</b>		JASON GREEN, HEIDI SPRENGER ROY BOOTS (T)		<b>AIR OPS BRANCH DIRECTOR</b>		PAUL BALFOUR
<b>5. Resources Assigned this Period</b>						
Strike Team / Task Force / Resource Designator	LWD	Leader	Number Persons	Drop Off PT./Time	Pick Up PT./Time	
E-272 FEL1 HAVILLAH LOGGING CO.	07/22	TOM KERSHNER	2	ICP/0700	ICP/2100	
E-273 FEL1 SILVER NICKLE LOGGING	07/22	RUDY RODRIGUEZ	2	ICP/0700	ICP/2100	
E-240 FEL2 AXSUS	07/21	PAUL MCNITT	2	ICP/0700	ICP/2100	
E-241 FEL2	07/21	DUSTIN CHANTRY	2	ICP/0700	ICP/2100	
E-318 LOGL SILVER NICKEL LOGGING	07/25	BART SILVERTHORN	2	ICP/0700	ICP/2100	
E-319 LOGL SILVER NICKEL LOGGING	07/25	BRENDEN LATIMER	2	ICP/0700	ICP/2100	
E-320 LOGT SILVER NICKEL LOGGING	07/25	JASON AYERS	1	ICP/0700	ICP/2100	
E-321 LOGT SILVER NICKEL LOGGING	07/25	CHAD HOCKETT	1	ICP/0700	ICP/2100	
E-322 LOGT SILVER NICKEL LOGGING	07/25	RON MCGINNEY	1	ICP/0700	ICP/2100	
E-323 LOGT SILVER NICKEL LOGGING	07/25	DERICK RAIDAN	1	ICP/0700	ICP/2100	
E-242 EXC2	07/21	PETE DELANGE	2	ICP/0700	ICP/2100	
E-307 GRD1 JUSTIN PITTS TRUCKING	07/24	MIKE WATSON	2	ICP/0700	ICP/2100	
E-308 GRD2 PETTET TRANSPORTATION	07/25	MARK ROWE	2	ICP/0700	ICP/2100	
E-316 DUMP BCD CONTRACTING	07/25	ALEXANDER STARK	1	ICP/0700	ICP/2100	
E-317 DUMP WILLS TRUCKING AND EXEC-	07/25	WILL KRICHBAUM	1	ICP/0700	ICP/2100	
<b>8. Division/Group Communication Summary</b>						
Function	Channel	RX Frequency N/W	RX Tone/NAC	TX Frequency N/W	TX Tone/NAC	Mode
COMMAND	CMD 7	168.4750	123.0	165.4000	123.0	A
COMMAND	CMD 8	169.5375	123.0	164.7125	123.0	A
COMMAND	CMD 10	170.0125	123.0	165.2500	123.0	A
COMMAND	CMD 11	170.4125	123.0	165.9625	123.0	A
TACTICAL	TAC 2	168.2000	123.0	168.2000	123.0	A
TACTICAL	TAC 5	166.7750	123.0	166.7750	123.0	A
AIR TO GROUND	A/G PRI	169.1500	000.0	169.1500	000.0	A
AIR TO GROUND	A/G SEC	168.4000	000.0	168.4000	000.0	A
<b>9. Prepared By (Resource Unit Leader)</b>			<b>Approved By (Planning Section Chief)</b>		<b>Date</b>	<b>Time</b>
JENNIFER NORTON			JILL JOHNSON		07/12/2024	2100

**Division/Group Assignment List (ICS 204 WF)**  
**Controlled Unclassified Information//Basic**

<b>1. Incident Name:</b>				<b>3.</b>		
PIONEER				Branch:  IV	Division/Group:  CONTINGENCY/ ROADS	
<b>2. Operational Period: 0700-2100</b>						
Date/Time From: 07/13/2024 0700 SAT		Date/Time To: 07/13/2024 2100 SAT				
<b>4. Operations Personnel</b>						
<b>OPERATIONS CHIEF</b>		AARON ROWE, LONNIE NEWTON (T)		<b>BRANCH DIRECTOR</b>		TIM BARNETT
<b>DIVISION/GROUP SUPERVISOR</b>		JASON GREEN, HEIDI SPRENGER ROY BOOTS (T)		<b>AIR OPS BRANCH DIRECTOR</b>		PAUL BALFOUR
<b>5. Resources Assigned this Period</b>						
Strike Team / Task Force / Resource Designator	LWD	Leader	Number Persons	Drop Off PT./Time	Pick Up PT./Time	
O-464 REMS 3	07/22	RON PEARSALL	4	ICP/0700	ICP/2100	
O-383 MEDIC 13	07/18	TONY BYLSKI	1	ICP/0700	ICP/2100	
O-534 EMPF MEDIC 7	07/25	JOSHUA GRAY	1	ICP/0700	ICP/2100	
E-194 AMBO-2	07/15	ANNA REYNOLDS	2	ICP/0700	ICP/2100	
E-19 VUTV BACKCOUNTRY RENTALS				ICP/0700	ICP/2100	
E-44 VATV KIRCHER SHERMAN				ICP/0700	ICP/2100	
E-108 VUTV (2 SEAT) -KIRCHER AND SHERMAN				ICP/0700	ICP/2100	
<b>6. Control Operations/Work Assignments:</b>						
<p><b>Task:</b> Implement control lines from H45 to DP53. Continue road maintenance on 4330 and 4010. Continue the POD line from DP53 to Lake Chelan.</p> <p><b>Purpose:</b> To protect critical values at risk.</p> <p><b>End state:</b> To have established control lines in place that correspond to Pioneer Fire strategic plan.</p>						
<b>7. Special Instructions:</b>						
<b>8. Division/Group Communication Summary</b>						
Function	Channel	RX Frequency N/W	RX Tone/NAC	TX Frequency N/W	TX Tone/NAC	Mode
COMMAND	CMD 7	168.4750	123.0	165.4000	123.0	A
COMMAND	CMD 8	169.5375	123.0	164.7125	123.0	A
COMMAND	CMD 10	170.0125	123.0	165.2500	123.0	A
COMMAND	CMD 11	170.4125	123.0	165.9625	123.0	A
TACTICAL	TAC 2	168.2000	123.0	168.2000	123.0	A
TACTICAL	TAC 5	166.7750	123.0	166.7750	123.0	A
AIR TO GROUND	A/G PRI	169.1500	000.0	169.1500	000.0	A
AIR TO GROUND	A/G SEC	168.4000	000.0	168.4000	000.0	A
<b>9. Prepared By (Resource Unit Leader)</b>			<b>Approved By (Planning Section Chief)</b>		<b>Date</b>	<b>Time</b>
JENNIFER NORTON			JILL JOHNSON		07/12/2024	2100

## Division/Group Assignment List (ICS 204 WF)

Controlled Unclassified Information//Basic

<b>1. Incident Name:</b>			<b>3.</b>			
PIONEER			<b>IV</b>	<b>CONTINGENCY/ ROADS</b>		
<b>2. Operational Period:</b> 0700-2100						
Date/Time From:	SAT	Date/Time To:	SAT			
07/13/2024 0700		07/13/2024 2100				
<b>4. Operations Personnel</b>						
<b>OPERATIONS CHIEF</b>	AARON ROWE, LONNIE NEWTON (T)		<b>BRANCH DIRECTOR</b>	TIM BARNETT		
<b>DIVISION/GROUP SUPERVISOR</b>	JASON GREEN, HEIDI SPRENGER ROY BOOTS (T)		<b>AIR OPS BRANCH DIRECTOR</b>	PAUL BALFOUR		
<b>7. Special Instructions:</b>						
<p>-Ensure hazard mitigations and IWI protocols are in place before taking action.</p> <p>-Contingency resources working DIV H: Do not draft from Gold Creek to Black Canyon Creek.</p> <p>-Work with READS to maintain resource protection.</p> <p>Antilon line construction (H47-Goff Peak) tree process &amp; thin specs:</p> <p>--Whole tree yard to READ-designated landings; cut &amp; process at landings; do not sort along 8200 road</p> <p>--Retain 30 trees per acre (~ 40'x40' spacing)</p> <p>--Do not cut trees &gt;16", unless deemed a hazard tree</p> <p>--Preferential order for tree retention, first keep: white bark pine, Ponderosa Pine, Douglas-Fir, then lodgepole pine</p> <p>--No restrictions on brush removal</p> <p>-** Denotes available for Initial Attack</p> <p>-Designated resources are available for Initial Attack response per the Pioneer Fire IA Response Plan. Number and type of resources mobilized to a new start will be determined by anticipated or requested need. Resources will be led by overhead at the Strike Team Leader level or above.</p> <p>-If Initial Attack occurs within the TFR, Wenatchee Dispatch will coordinate with appropriate duty officer and contact Field Ops for response.</p> <ul style="list-style-type: none"> <li>Field Operations will contact the Structure/IA Group Supervisor and/or Air Operations to coordinate response to new start.</li> <li>Local forest Initial Attack frequencies will be used and provided in the IAP Communications Plan.</li> <li>The same process will be used for fires outside of TFR if assistance from Pioneer fire resources is requested.</li> </ul>						
<b>8. Division/Group Communication Summary</b>						
Function	Channel	RX Frequency N/W	RX Tone/NAC	TX Frequency N/W	TX Tone/NAC	Mode
COMMAND	CMD 7	168.4750	123.0	165.4000	123.0	A
COMMAND	CMD 8	169.5375	123.0	164.7125	123.0	A
COMMAND	CMD 10	170.0125	123.0	165.2500	123.0	A
COMMAND	CMD 11	170.4125	123.0	165.9625	123.0	A
TACTICAL	TAC 2	168.2000	123.0	168.2000	123.0	A
TACTICAL	TAC 5	166.7750	123.0	166.7750	123.0	A
AIR TO GROUND	A/G PRI	169.1500	000.0	169.1500	000.0	A
AIR TO GROUND	A/G SEC	168.4000	000.0	168.4000	000.0	A
<b>9. Prepared By (Resource Unit Leader)</b>			<b>Approved By (Planning Section Chief)</b>		<b>Date</b>	<b>Time</b>
JENNIFER NORTON			JILL JOHNSON		07/12/2024	2100

## Division/Group Assignment List (ICS 204 WF)

Controlled Unclassified Information//Basic

<b>1. Incident Name:</b>			<b>3.</b>			
PIONEER			<b>IV</b>		<b>FIRING</b>	
<b>2. Operational Period:</b> 0700-2100						
Date/Time From: 07/13/2024 0700 SAT		Date/Time To: 07/13/2024 2100 SAT				
<b>4. Operations Personnel</b>						
<b>OPERATIONS CHIEF</b>		AARON ROWE, LONNIE NEWTON (T)		<b>BRANCH DIRECTOR</b>		TIM BARNETT
<b>DIVISION/GROUP SUPERVISOR</b>		FIDEL VERDUZCO		<b>AIR OPS BRANCH DIRECTOR</b>		PAUL BALFOUR
<b>5. Resources Assigned this Period</b>						
Strike Team / Task Force / Resource Designator		LWD	Leader	Number Persons	Drop Off PT./Time	Pick Up PT./Time
O-400 TFLD		07/21	BENJAMIN EDDINGS	1	CAMP 4 SPIKE/0700	CAMP 4 SPIKE/2100
C-31 CRW1 LA GRANDE		07/19	CHUY ELGUEZABAL	23	CAMP 4 SPIKE/0700	CAMP 4 SPIKE/2100
E-192 ENG5 E4406		07/15	SETH REYNOLDS	4	CAMP 4 /0700	ICP/2100
E-193 ENG5 E4501		07/15	CONNOR RUPERT	4	CAMP 4 /0700	ICP/2100
<b>6. Control Operations/Work Assignments:</b>						
<p><b>TASK:</b> Prepare to implement firing operations as fuel and weather conditions allow in Division Sierra. Assist with operations in Division Sierra as needed.</p> <p><b>PURPOSE:</b> Prevent main fire from advancing east of Nelson Butte and impacting values at risk down lake</p> <p><b>END STATE:</b> Fire is checked along established lines within Division Sierra, further preventing risk to values down lake</p>						
<b>7. Special Instructions:</b>						
-Ensure hazard mitigations and IWI protocols are in place before taking action.						
<b>8. Division/Group Communication Summary</b>						
Function	Channel	RX Frequency N/W	RX Tone/NAC	TX Frequency N/W	TX Tone/NAC	Mode
COMMAND	CMD 7	168.4750	123.0	165.4000	123.0	A
COMMAND	CMD 10	170.0125	123.0	165.2500	123.0	A
COMMAND	CMD 11	170.4125	123.0	165.9625	123.0	A
COMMAND	CMD 12	170.6875	123.0	166.5750	123.0	A
TACTICAL	TAC 1	168.0500	123.0	168.0500	123.0	A
AIR TO GROUND	A/G PRI	169.1500	000.0	169.1500	000.0	A
AIR TO GROUND	A/G SEC	168.4000	000.0	168.4000	000.0	A
<b>9. Prepared By (Resource Unit Leader)</b>			<b>Approved By (Planning Section Chief)</b>		<b>Date</b>	<b>Time</b>
JENNIFER NORTON			JILL JOHNSON		07/12/2024	2100

## Division/Group Assignment List (ICS 204 WF)

Controlled Unclassified Information//Basic

<b>1. Incident Name:</b>				<b>3.</b>			
PIONEER				<b>IV</b>	<b>Division/Group:  STAGING</b>		
<b>2. Operational Period:</b> 0700-2100							
Date/Time From: 07/13/2024 0700 SAT		Date/Time To: 07/13/2024 2100 SAT					
<b>4. Operations Personnel</b>							
<b>OPERATIONS CHIEF</b>		AARON ROWE, LONNIE NEWTON (T)		<b>BRANCH DIRECTOR</b>		TIM BARNETT	
<b>DIVISION/GROUP SUPERVISOR</b>		MIKE EMERICK		<b>AIR OPS BRANCH DIRECTORY</b>		PAUL BELFOUR	
<b>5. Resources Assigned this Period</b>							
Strike Team / Task Force / Resource Designator		LWD	Leader	Number Persons	Drop Off PT./Time	Pick Up PT./Time	
E-339 WTS2 ARCHER MOUNTAIN		07/26	DAVE CREW	1	ICP/0700	ICP/2100	
<b>6. Control Operations/Work Assignments:</b>							
<p><b>Task:</b> Resources remain available for divisions needs. Mobilization to division is efficient and timely.</p> <p><b>Purpose:</b> To assist divisions as needed to complete missions as appropriate.</p> <p><b>End state:</b> Suppression efforts have been supported effectively.</p>							
<b>7. Special Instructions:</b>							
<b>8. Division/Group Communication Summary</b>							
Function	Channel	RX Frequency N/W	RX Tone/NAC	TX Frequency N/W	TX Tone/NAC	Mode	
COMMAND	CMD 7	168.4750	123.0	165.4000	123.0	A	
COMMAND	CMD 10	170.0125	123.0	165.2500	123.0	A	
TACTICAL	TAC 5	166.7750	123.0	166.7750	123.0	A	
AIR TO GROUND	A/G PRI	169.1500	000.0	169.1500	000.0	A	
AIR TO GROUND	A/G SEC	168.4000	000.0	168.4000	000.0	A	
<b>9. Prepared By (Resource Unit Leader)</b>			<b>Approved By (Planning Section Chief)</b>			<b>Date</b>	<b>Time</b>
JENNIFER NORTON			JILL JOHNSON			07/12/2024	2100

## Division/Group Assignment List (ICS 204 WF)

Controlled Unclassified Information//Basic

<b>1. Incident Name:</b>				<b>3.</b>			
PIONEER				<b>Branch:</b>  V		<b>Division/Group:</b>  LAKE SHORE	
<b>2. Operational Period:</b> 0700-2100							
Date/Time From: 07/13/2024 0700 SAT		Date/Time To: 07/13/2024 2100 SAT					
<b>4. Operations Personnel</b>							
<b>OPERATIONS CHIEF</b>		AARON ROWE, LONNIE NEWTON (T)		<b>BRANCH DIRECTOR</b>		JEROMY WILSON	
<b>DIVISION/GROUP SUPERVISOR</b>		JON STONELAKE, NICK WIGLE (T)		<b>AIR OPS BRANCH DIRECTOR</b>		PAUL BALFOUR	
<b>5. Resources Assigned this Period</b>							
Strike Team / Task Force / Resource Designator		LWD	Leader	Number Persons	Drop Off PT./Time	Pick Up PT./Time	
O-424 TFLD		07/23	SAMUEL DAUGHERTY	1	SAFETY HARBOR/0700	SAFETY HARBOR/2100	
O-495 TFLD (T)		07/23	ROY TAYLOR	1	SAFETY HARBOR/0700	SAFETY HARBOR/2100	
C-42 CR2I SRV #14		07/22	UBALDO VIERA	20	SAFETY HARBOR/0700	SAFETY HARBOR/2100	
O-461 MEDIC 16		07/22	KELLY MAX	1	SAFETY HARBOR/0700	SAFETY HARBOR/2100	
<b>6. Control Operations/Work Assignments:</b>							
<p><b>TASK:</b> Protect Forest Service infrastructure and private property by assessing structures and implementing mitigation actions between Safety Harbor and Mitchell Creek.</p> <p><b>PURPOSE:</b> To prevent fire impacts to property and infrastructure.</p> <p><b>END STATE:</b> Infrastructure along the lake has been protected from fire impacts.</p>							
<b>7. Special Instructions:</b>							
<p>-In large or long term spike camps use helicopters, boats, or pack stock to deliver portable backcountry latrines and remove human waste if necessary. If camp does not have adequate pack, boat, or air support for human waste management, establish community latrines well away from water sources and common areas. Use human waste bags, if necessary.</p> <p>-Ensure hazard mitigations and IWI protocols are in place before taking action.</p> <p>** Denotes available for Initial Attack</p>							
<b>8. Division/Group Communication Summary</b>							
Function	Channel	RX Frequency N/W	RX Tone/NAC	TX Frequency N/W	TX Tone/NAC	Mode	
COMMAND	CMD 7	168.4750	123.0	165.4000	123.0	A	
COMMAND	CMD 10	170.0125	123.0	165.2500	123.0	A	
COMMAND	CMD 11	170.4125	123.0	165.9625	123.0	A	
TACTICAL	TAC 3	168.6000	123.0	168.6000	123.0	A	
AIR TO GROUND	A/G PRI	169.1500	000.0	169.1500	000.0	A	
AIR TO GROUND	A/G SEC	168.4000	000.0	168.4000	000.0	A	
<b>9. Prepared By (Resource Unit Leader)</b>			<b>Approved By (Planning Section Chief)</b>			<b>Date</b>	<b>Time</b>
JENNIFER NORTON			JILL JOHNSON			07/12/2024	2000



## Division/Group Assignment List (ICS 204 WF)

Controlled Unclassified Information//Basic

<b>1. Incident Name:</b>				<b>3.</b>			
PIONEER				<b>Branch:</b>  V		<b>Division/Group:</b>  BOAT	
<b>2. Operational Period:</b> 0700-2100							
Date/Time From: 07/13/2024 0700 SAT		Date/Time To: 07/13/2024 2100 SAT					
<b>4. Operations Personnel</b>							
<b>OPERATIONS CHIEF</b>		AARON ROWE, LONNIE NEWTON (T)		<b>BRANCH DIRECTOR</b>		JEROMY WILSON	
<b>DIVISION/GROUP SUPERVISOR</b>		SAM STEINHOUSER, SETH ELLIS (T) TOSTEN KULAAS (T)		<b>AIR OPS BRANCH DIRECTOR</b>		PAUL BALFOUR	
<b>5. Resources Assigned this Period</b>							
Strike Team / Task Force / Resource Designator		LWD	Leader	Number Persons	Drop Off PT./Time	Pick Up PT./Time	
O-458 TFLD		07/22	GREG SEALS	1	LUCERNE/0700	LUCERNE/2100	
O-469 TFLD		07/23	BRIAN JAMES	1	ICP/0700	ICP/2100	
O-248 TFLD (T)		07/13	JASON WARD	1	LUCERNE/0700	LUCERNE/2100	
O-263 TFLD (T)		07/18	AARON PEDERSEN	1	ICP/0700	ICP/2100	
O-369 TFLD (T)		07/15	KATY GIDDINGS	1	ICP/0700	ICP/2100	
O-331 HEQB		07/16	BRANDON REED	1	ICP/0700	ICP/2100	
O-332 HEQB		07/15	ERIC WEINKE	1	LUCERNE/0700	LUCERNE/2100	
O-354 HEQB		07/23	LOGAN PIKE	1	LUCERNE/0700	LUCERNE/2100	
O-361 HEQB (T)		07/16	THOMAS DOWDY	1	LUCERNE/0700	LUCERNE/2100	
O-368 HEQB (T)		07/16	COLE BINGHAM	1	LUCERNE/0700	LUCERNE/2100	
E-1 TBOT WA-NCP BOAT *CWN			SONJA SHAW	1	STEHEKIN/0700	STEHEKIN/2100	
E-3 TBOT CHELAN CO. F&R#7 *O/S, *N/O (LAKE SHORE)			BRANDON ASHER	2	FS DOCK/0700	FS DOCK/2100	
E-12 TBOT CHELAN RD *M-SA			DICK GORDON	1	FS DOCK/0700	FS DOCK/2100	
E-43 TBOT LLAMAS BOAT *O/S			GAYLE THOMAS	1	FS DOCK/0700	FS DOCK/2100	
E-91 TBOT DNR/MUD PUPPY *N/O		07/26	CRAIG INDERWIESEN	1	LUCERNE/0700	LUCERNE/2100	
E-98 TBOT CHELAN COUNTY SHERIFFS *O/S			BEN KILFOIL	2	FS DOCK/0700	FS DOCK/2100	
E-120 TBOT PILGRIM		07/17	KIP ZWOLENSKI	1	LUCERNE/0700	LUCERNE/2100	
<b>8. Division/Group Communication Summary</b>							
Function	Channel	RX Frequency N/W	RX Tone/NAC	TX Frequency N/W	TX Tone/NAC	Mode	
COMMAND	CMD 7	168.4750	123.0	165.4000	123.0	A	
COMMAND	CMD 8	169.5375	123.0	164.7125	123.0	A	
COMMAND	CMD 9	170.4500	123.0	168.1000	123.0	A	
COMMAND	CMD 10	170.0125	123.0	165.2500	123.0	A	
COMMAND	CMD 11	170.4125	123.0	165.9625	123.0	A	
TACTICAL	TAC 6	168.2500	123.0	168.2500	123.0	A	
AIR TO GROUND	A/G PRI	169.1500	000.0	169.1500	000.0	A	
AIR TO GROUND	A/G SEC	168.4000	000.0	168.4000	000.0	A	
<b>9. Prepared By (Resource Unit Leader)</b>			<b>Approved By (Planning Section Chief)</b>			<b>Date</b>	<b>Time</b>
JENNIFER NORTON			JILL JOHNSON			07/12/2024	2100

**Division/Group Assignment List (ICS 204 WF)**  
**Controlled Unclassified Information//Basic**

<b>1. Incident Name:</b>				<b>3.</b>		
PIONEER				Branch:  V	Division/Group:  BOAT	
<b>2. Operational Period: 0700-2100</b>						
Date/Time From: 07/13/2024 0700 SAT		Date/Time To: 07/13/2024 2100 SAT				
<b>4. Operations Personnel</b>						
<b>OPERATIONS CHIEF</b>		AARON ROWE, LONNIE NEWTON (T)		<b>BRANCH DIRECTOR</b>		JEROMY WILSON
<b>DIVISION/GROUP SUPERVISOR</b>		SAM STEINHOUSER, SETH ELLIS (T) TOSTEN KULAAS (T)		<b>AIR OPS BRANCH DIRECTOR</b>		PAUL BALFOUR
<b>5. Resources Assigned this Period</b>						
Strike Team / Task Force / Resource Designator	LWD	Leader	Number Persons	Drop Off PT./Time	Pick Up PT./Time	
E-121 TBOT BRINNON FIRE *N/O	07/19	CHRISTOPHER DOLAN	2	LUCERNE/0700	LUCERNE/2100	
E-201 TBOT SEA FALCON	07/21	KAWAI LAROYA	2	FS DOCK/0700	FS DOCK/2100	
E-202 TBOT RIVER RUNNER *N/O (LAKE SHORE)	07/21	MATT RYLAK	2	FS DOCK/0700	FS DOCK/2100	
E-295 TBOT PUGET PROTECTOR *N/O	07/24	RYKER GIBSON	2	STEHEKIN/0700	STEHEKIN/2100	
E-296 TBOT FRV #9 *N/O	07/24	TOM PETRICH	2	LUCERNE/0700	LUCERNE/2100	
O-357 MEDIC 10	07/15	SEAN HENDRON	1	LUCERNE/0700	LUCERNE/2100	
<b>6. Control Operations/Work Assignments:</b>						
<b>Task:</b> Provide logistical needs for all fire activities on navigable waters.						
<b>Purpose:</b> Adequately support the needs of incident personnel in areas not accessible by roads.						
<b>End state:</b> Deliver supplies and personnel providing a timely, safe and effective operation.						
<b>7. Special Instructions:</b>						
-Follow instructions in IAP for requesting Ferry Tickets.						
-All emergency medical requests for boats go through Pioneer Communications.						
-* O/S – Operator Swaps As Needed, *CWN – Call When Needed, *M-SA – Operator takes every Sunday off						
-*N/O- Night Operation Capable						
<b>8. Division/Group Communication Summary</b>						
Function	Channel	RX Frequency N/W	RX Tone/NAC	TX Frequency N/W	TX Tone/NAC	Mode
COMMAND	CMD 7	168.4750	123.0	165.4000	123.0	A
COMMAND	CMD 8	169.5375	123.0	164.7125	123.0	A
COMMAND	CMD 9	170.4500	123.0	168.1000	123.0	A
COMMAND	CMD 10	170.0125	123.0	165.2500	123.0	A
COMMAND	CMD 11	170.4125	123.0	165.9625	123.0	A
TACTICAL	TAC 6	168.2500	123.0	168.2500	123.0	A
AIR TO GROUND	A/G PRI	169.1500	000.0	169.1500	000.0	A
AIR TO GROUND	A/G SEC	168.4000	000.0	168.4000	000.0	A
<b>9. Prepared By (Resource Unit Leader)</b>			<b>Approved By (Planning Section Chief)</b>		<b>Date</b>	<b>Time</b>
JENNIFER NORTON			JILL JOHNSON		07/12/2024	2100

**Division/Group Assignment List (ICS 204 WF)**  
**Controlled Unclassified Information//Basic**

<b>1. Incident Name:</b>				<b>3.</b>		
PIONEER				Branch:	Division/Group:	
<b>2. Operational Period: 0700-2100</b>						
Date/Time From: 07/13/2024 0700 SAT		Date/Time To: 07/13/2024 2100 SAT		V	STRUCTURE/IA	
<b>4. Operations Personnel</b>						
<b>OPERATIONS CHIEF</b>		AARON ROWE, LONNIE NEWTON (T)		<b>BRANCH DIRECTOR</b>		JEROMY WILSON
<b>DIVISION/GROUP SUPERVISOR</b>		SCOTT CLEAVE		<b>AIR OPS BRANCH DIRECTOR</b>		PAUL BALFOUR
<b>5. Resources Assigned this Period</b>						
Strike Team / Task Force / Resource Designator		LWD	Leader	Number Persons	Drop Off PT./Time	Pick Up PT./Time
O-491 SOFR		07/24	JONATHAN T LEE	1	ICP/0700	ICP/2100
C-48 CRW2 NORTH PACIFIC FORESTRY		07/23	OSCAR SANCHES	20	ICP/0700	ICP/2100
C-49 CRW2 NORTH PACIFIC FORESTRY		07/23	BERTHA MARTINEZ	20	ICP/0700	ICP/2100
O-482 TFLD		07/22	MARCUS WELLS	1	ICP/0700	ICP/2100
O-483 STEN (T)		07/22	CHUCK W KOCHER	1	ICP/0700	ICP/2100
E-281 ENG5		07/22	AUSTIN SABEDRA	3	ICP/0700	ICP/2100
E-282 ENG5		07/22	NATHAN RICHMAN	2	ICP/0700	ICP/2100
E-283 ENG3		07/22	TROY KEENE	3	ICP/0700	ICP/2100
E-284 ENG5		07/22	LUKE GARRISON	3	ICP/0700	ICP/2100
E-285 ENG3		07/22	ANLYN FLAKE	3	ICP/0700	ICP/2100
E-233 ENG5		07/20	BRAEDEN MIKKELSON	3	ICP/0700	ICP/2100
E-234 ENG6		07/21	COLE SCHIERMEISTER	4	ICP/0700	ICP/2100
E-232 ENG5		07/22	SOL ARNO	3	ICP/0700	ICP/2100
E-231 ENG5		07/22	ERNEST LEE NACE	5	ICP/0700	ICP/2100
E-325 ENG6 METHOW RIVER WILD FIRE		07/25	IVAN MUNOZ	3	ICP/0700	ICP/2100
<b>8. Division/Group Communication Summary</b>						
Function	Channel	RX Frequency N/W	RX Tone/NAC	TX Frequency N/W	TX Tone/NAC	Mode
COMMAND	CMD 7	168.4750	123.0	165.4000	123.0	A
COMMAND	CMD 10	170.0125	123.0	165.2500	123.0	A
TACTICAL	TAC 4	166.7250	123.0	166.7250	123.0	A
AIR TO GROUND	A/G PRI	169.1500	000.0	169.1500	000.0	A
AIR TO GROUND	A/G SEC	168.4000	000.0	168.4000	000.0	A
<b>9. Prepared By (Resource Unit Leader)</b>			<b>Approved By (Planning Section Chief)</b>		<b>Date</b>	<b>Time</b>
JENNIFER NORTON			JILL JOHNSON		07/12/2024	2000

## Division/Group Assignment List (ICS 204 WF)

Controlled Unclassified Information//Basic

<b>1. Incident Name:</b>				<b>3.</b>			
PIONEER				<b>Branch:</b>  V		<b>Division/Group:</b>  STRUCTURE/IA	
<b>2. Operational Period:</b> 0700-2100							
Date/Time From: 07/13/2024 0700 SAT		Date/Time To: 07/13/2024 2100 SAT					
<b>4. Operations Personnel</b>							
<b>OPERATIONS CHIEF</b>		AARON ROWE, LONNIE NEWTON (T)		<b>BRANCH DIRECTOR</b>		JEROMY WILSON	
<b>DIVISION/GROUP SUPERVISOR</b>		SCOTT CLEAVE		<b>AIR OPS BRANCH DIRECTOR</b>		PAUL BALFOUR	
<b>5. Resources Assigned this Period</b>							
Strike Team / Task Force / Resource Designator		LWD	Leader	Number Persons	Drop Off PT./Time	Pick Up PT./Time	
E-178 WTS2 NORTHERN		07/25	BILL ACKERSON	1	ICP/0700	ICP/2100	
E-179 WTS2 KING HYDROSEEDING		07/24	JOHN GRABOWSKI	1	ICP/0700	ICP/2100	
O-460 MEDIC 17		07/22	TREVOR LEARY	1	ICP/0700	ICP/2100	
<b>6. Control Operations/Work Assignments:</b>							
<p><b>TASK:</b> Begin assessment of risk to structures/infrastructure near Manson, working with local partners and authorities.</p> <p><b>PURPOSE:</b> Plan for and mitigate potential long-term impact to communities down lake from fire.</p> <p><b>END STATE:</b> Plan has been developed and mitigation implemented for protection of structures in and around Manson.</p>							
<b>7. Special Instructions:</b>							
<p>-Ensure hazard mitigations and IWI protocols are in place before taking action.</p> <p>-All resources in Structure/IA Group are available for Initial Attack response per the Pioneer Fire IA Response Plan. Number and type of resources mobilized to a new start will be determined by anticipated or requested need. Resources will be led by overhead at the Strike Team Leader level or above.</p> <p>-If Initial Attack occurs within the TFR, Wenatchee Dispatch will coordinate with appropriate duty officer and contact Field Ops for response.</p> <ul style="list-style-type: none"> <li>Field Operations will contact the Structure/IA Group Supervisor and/or Air Operations to coordinate response to new start.</li> <li>Local forest Initial Attack frequencies will be used and provided in the IAP Communications Plan.</li> <li>The same process will be used for fires outside of TFR if assistance from Pioneer fire resources is requested.</li> </ul>							
<b>8. Division/Group Communication Summary</b>							
Function	Channel	RX Frequency N/W	RX Tone/NAC	TX Frequency N/W	TX Tone/NAC	Mode	
COMMAND	CMD 7	168.4750	123.0	165.4000	123.0	A	
COMMAND	CMD 10	170.0125	123.0	165.2500	123.0	A	
TACTICAL	TAC 4	166.7250	123.0	166.7250	123.0	A	
AIR TO GROUND	A/G PRI	169.1500	000.0	169.1500	000.0	A	
AIR TO GROUND	A/G SEC	168.4000	000.0	168.4000	000.0	A	
<b>9. Prepared By (Resource Unit Leader)</b>			<b>Approved By (Planning Section Chief)</b>			<b>Date</b>	<b>Time</b>
JENNIFER NORTON			JILL JOHNSON			07/12/2024	2000

AIR OPERATIONS SUMMARY ICS-220						Time Prepared 18:00	Date Prepared 7/12/2024	Prepared By Paul Balfour - AOB					
Incident Name / Number Pioneer / WA-SES-000173		Sunrise 05:18	Sunset 20:55	Airport S10	Pumpkin 21:25	Shutdown 21:00	Operational Period - Date 7/13/2024				Operational Period - Time 0700-2100		
General Remarks, Safety Notes, Hazards, Air Operations Special Equipment, etc.:						Helibase Information		TFR				Medical Ship Information	
<p><i>*Order All Aircraft over Command to Helibase.</i></p> <p><i>*All GPS coordinates to be collected in Degrees and Decimal Minutes (DMM).</i></p> <p><i>*Be mindful of all overhead and environmental hazards while working with aircraft.</i></p> <p><i>*Clear drop area/line before initiating drop sequence.</i></p> <p><i>*If dipping out of Columbia River, sanitize buckets before changing water sources.</i></p> <p><i>*** WINDS: return to helibase if winds become unmanageable.</i></p> <p><i>*Aviation daily cost to: 2024.pioneer.finance@firenet.gov</i></p> <p><i>*Aviation daily cost to: pioneerhelibase2024@gmail.com</i></p>						<p><b>Primary:</b> Pioneer HB (Chelan Airport) Location: 47 51.96 N / 119 56.56 W Phone: (971) 762-8575</p> <p><b>Type 1 Helicopters:</b> Valley HB (Methow Valley Airport) Location: 48 25.567 N / 120 08.513 W Phone: (971) 727-7255</p>		<p>(A-74) Surface to 10,000' <b>4/6779 TFR Freq 123.4000</b> In Effect - 24 Hours</p> <p><b>Helispots</b> H-1   48 10.755' N / 120 31.803' W H-5   48 12.162' N / 120 35.447' W H-10   48 14.050' N / 120 36.461' W H12   48 13.325' N / 120 35.908' W H-14 (Stehkin A/P)   48 20.75' N / 120 43.25' W H-16   48 07.74' N / 120 29.55' W H-25   47 59.212' N / 120 16.526' W H-40   48 06.357' N / 120 20.452' W</p>				<p><b>Medivac/Medical Transport Ship:</b> Operational Hours: 0900 to 2100 Call Pioneer Helibase 971.762.8575</p> <p><b>Short-Haul Platform:</b> Operational Hours: 0900 to 2100 Order through Pioneer Helibase</p>	
Incident Frequencies	RX	Tone	TX	Tone	AM/FM	Position	Name	Phone		EQUIPMENT/SUPPLIES			
Air to Air Primary (A-8)	123.4000		123.4000		AM	AOBD	Paul Balfour	(509) 993-8739		Commo Trailer (Pioneer)	E-20		
Air to Air Secondary (A-9)	118.2750		118.2750		AM	AOBD(t)	Kelly Hedgepeth	(541) 805-8416		Hand Wash Station (Pioneer)	E-47		
						ASGS	Tim Lyda	(541) 761-2676		Mobile Office Trailer (Pioneer)	E-224		
A/G Pri Tactical (A-10)	169.1500		169.1500		FM	ASGS(t)	Heather Wonenberg	(209) 347-7546		Water Tender (Pioneer)	E-77		
A/G Sec Operational (A-11)	168.4000		168.4000		FM	Air Attack	Michael Noe	(509) 860-6692		Water Tender (Pioneer)	E-14		
						Air Attack (t)	Zak Tayer	(509) 952-7419		Commo Trailer (Valley)	E-150		
A/G 3	166.6125		166.6125		FM	HEBM Pioneer	Jeff Quick	(928) 853-3027		Water Tender (Valley)	E-158		
						HEBM(t) Pioneer	Will Foster	(970) 218-5447					
DECK	163.1000		163.1000		FM	HEBM Valley	Randy McLandress	(509) 668-7249					
						HEBM(t) Valley	Willow Merritt	(503) 250-4597					
COMMAND	See ICS 205 Communications Plan					ATGS/HLCO	Jamie Lilienthal	(541) 529-9492					
						Scooper Mngr	Chris Masson	(605) 252-8129					
						UAS-47	Kelly Lewis	(208) 721-0232					
VMED 29	155.3475	156.7	155.3475	156.7	FM	UAS-31	Patrick Clark	(661) 342-6955					
						UAS - Baker River IHC	Lance Barajas	(520) 576-4520					
AIR GUARD	168.6250		168.6250	110.9	FM	UAS - Entiat IHC	Hannah Coolidge	(301) 919-9973					
National Flight Following	168.6500	110.9	168.6500	110.9	FM	CWICC	Aircraft Desk	(509) 884-3473 ext. 2					
						OWF-UAO	Cory Dolberry	(509) 668-2801					
HELICOPTERS - Assigned							HELICOPTERS - GACC Prepo and Lend/Lease						
FAA #	TYPE	Make/Model	Helibase	Start	Avail	Remarks	FAA #	TYPE	Make/Model	Airport	Start	Avail	Remarks
HB-16FH (A-81)	1	UH-60	Valley	0800	0900	BKT/LL	H-125CL (A-91)	3	AS-350B3e	EAT	0800	0900	NPS MOCA Short Haul/Recon
HB-161KA (A-24)	1	K-1200	Valley	0800	0900	BKT/LL							
HB-344RA (A-45)	1	CH-47D	Valley	0800	0900	BKT/LL							
N628CK (A-162)	1	SH-3H	Valley	0800	0900	BKT/LL							
N381SH (A-129)	1	UH-60	Valley	0800	0900	BKT/LL							
H-527 (H-811KA) (A-94)	2	Bell 212HP	Chelan	0800	0900	BKT/LL/Pax							
H-669H (A-98)	2	Bell 205 A1 ++	Chelan	0800	0900	BKT/LL/Pax							
H-234BH (A-99)	3	AS-350B3	Chelan	0800	0900	Recon/BKT/Medical							
H-544AS (A-60)	3	AS-350B3	Chelan	0800	0900	HLCO/Recon							
H-407RL (A-1)	3	Bell 407HP	Chelan	0800	0900	Short Haul/Recon							
UAS							FIXED WING - AirTanker/AA/HLCO						
Call Sign	Type	Make/Model	Base	Start	Avail	Remarks	FAA #	Call Sign	Make/Model	Base	Start	Avail	Remarks
UMR-31	3	AltaX	Lucerne	0600	2200	IR/PSD	N-155AV	AA-5AV	King Air	EAT	0900	1000	Assigned AA
UMR-45 Baker River IHC	4	Anafi	DIV Z	0600	2200	IR	H-544AS (A-60)	4AS	AS350B3	Chelan	0800	0900	Assigned HLCO
UMR-46 Entiat IHC	4	Anafi	DIV A	0600	2200	IR	422BT (A-155)	S-285	215T	W20	1000	1900	In Moses Lake
UMR-47	4	Anafi	Div S	0600	2200	Kelly Lewis (FOBS)	406BT (A-156)	S-286	215T	W20	1000	1900	In Moses Lake

# INCIDENT RADIO COMMUNICATIONS PLAN (ICS 205)

Controlled Unclassified Information//Basic

<b>1. Incident Name:</b>	<b>2. Date/Time Prepared:</b>	<b>3. Operational Period:</b> 0700-2100	
PIONEER	Date: 07/12/2024 Time: 2000	Date/Time From: 07/13/2024 0700 SAT	Date/Time To: 07/13/2024 2100 SAT

**4. Basic Radio Channel Use:**

Zone Group	Ch #	Function	Channel Name/Trunked Radio System Talkgroup	Assignment	RX Freq	RX Tone/NAC	TX Freq	TX Tone/NAC	Mode (A,D, or M)	Remarks
	1	TACTICAL	TAC 1	DIV D & S / FIRING GRP	168.0500	123.0	168.0500	123.0	A	
	2	TACTICAL	TAC 2	DIV A / CONT	168.2000	123.0	168.2000	123.0	A	
	3	TACTICAL	TAC 3	LAKE SHORE	168.6000	123.0	168.6000	123.0	A	
	4	TACTICAL	TAC 4	STRUCTURE / IA	166.7250	123.0	166.7250	123.0	A	
	5	TACTICAL	TAC 5	ROADS / STAGING	166.7750	123.0	166.7750	123.0	A	
	6	TACTICAL	TAC 6	BOAT	168.2500	123.0	168.2500	123.0	A	
	7	COMMAND	CMD 7	ALL	168.4750	123.0	165.4000	123.0	A	CHELAN BUTTE
	8	COMMAND	CMD 8	ALL	169.5375	123.0	164.7125	123.0	A	OLD MAID MTN
	9	COMMAND	CMD 9	ALL	170.4500	123.0	168.1000	123.0	A	MOORE MTN
	10	COMMAND	CMD 10	ALL	170.0125	123.0	165.2500	123.0	A	SLIDE RIDGE
	11	COMMAND	CMD 11	ALL	170.4125	123.0	165.9625	123.0	A	FOX PEAK
	12	AIR TO GROUND	A/G PRI	ALL DIVS	169.1500	000.0	169.1500	000.0	A	
	13	AIR TO GROUND	A/G SEC	ALL DIVS	168.4000	000.0	168.4000	000.0	A	
	14	AIR TO GROUND	A/G 3	ALL DIVS	166.6125	000.0	166.6125	000.0	A	TAKE OFF/LANDING
	15	AIR TO GROUND	VMED 29	ALL DIVS	155.3475	156.7	155.3475	156.7	A	AIR EMS COORD
	16	AIR GUARD	AIRGUARD	ALL DIVS	168.6250	000.0	168.6250	110.9	A	EMERG AIRCRAFT CONTACT

**5. Special Instructions:** 24-HOUR STAFFING: PIONEER COMMUNICATIONS PHONE NUMBER: (208) 891-8093 / CURRENT CLOSE "PIE 6-21"

<b>6. Prepared By</b> (Communications Unit Leader)	Name: MISSY PARKER	Signature: <i>Missy Parker</i>
ICS 205	IAP Page	Date/Time: 07/12/2024 2000

# INCIDENT RADIO COMMUNICATIONS PLAN (ICS 205)

Controlled Unclassified Information//Basic

<b>1. Incident Name:</b>	<b>2. Date/Time Prepared:</b>	<b>3. Operational Period:</b> 0700-2100	
PIONEER - Branch IV & V	Date: 07/12/2024 Time: 2000	Date/Time From: SAT 07/13/2024 0700	Date/Time To: SAT 07/13/2024 2100

**4. Basic Radio Channel Use:**

Zone Group	Ch #	Function	Channel Name/Trunked Radio System Talkgroup	Assignment	RX Freq	RX Tone/NAC	TX Freq	TX Tone/NAC	Mode (A,D, or M)	Remarks
	1	TACTICAL	TAC 1	DIV D & S / FIRING GRP	168.0500	123.0	168.0500	123.0	A	
	2	TACTICAL	TAC 2	DIV A / CONT	168.2000	123.0	168.2000	123.0	A	
	3	TACTICAL	TAC 3	LAKE SHORE	168.6000	123.0	168.6000	123.0	A	
	4	TACTICAL	TAC 4	STRUCTURE / IA	166.7250	123.0	166.7250	123.0	A	
	5	TACTICAL	TAC 5	ROADS / STAGING	166.7750	123.0	166.7750	123.0	A	
	6	TACTICAL	TAC 6	BOAT	168.2500	123.0	168.2500	123.0	A	
	7	AIR TO GROUND	A/G PRI	ALL DIVS	169.1500	000.0	169.1500	000.0	A	
	8	AIR TO GROUND	A/G SEC	ALL DIVS	168.4000	000.0	168.4000	000.0	A	
	9	AIR TO GROUND	A/G 3	ALL DIVS	166.6125	000.0	166.6125	000.0	A	
	10	COMMAND	CMD 10	ALL	170.0125	123.0	165.2500	123.0	A	SLIDE RIDGE
	11	COMMAND	CMD 11	ALL	170.4125	123.0	165.9625	123.0	A	FOX PEAK
	12	COMMAND	CMD 12	ALL	170.6875	123.0	166.5750	123.0	A	GOAT MTN
	13	COMMAND	GOAT	ALL	172.3500	146.2	165.0125	118.8	A	GOAT MTN
	14	COMMAND	MCLUR	ALL	172.3500	146.2	165.0125	103.5	A	MCLURE MTN
	15	AIR TO GROUND	VMED 29	ALL DIVS	155.3475	156.7	155.3475	156.7	A	AIR EMS COORD
	16	AIR GUARD	AIRGUARD	ALL DIVS	168.6250	000.0	168.6250	110.9	A	EMERG AIRCRAFT CONTACT

**5. Special Instructions:** 24-HOUR STAFFING: PIONEER COMMUNICATIONS PHONE NUMBER: (208) 891-8093 / CURRENT CLOSE "IV"

<b>6. Prepared By</b> (Communications Unit Leader)	Name: MISSY PARKER	Signature: <i>Missy Parker</i>
ICS 205	IAP Page	Date/Time: 07/12/2024 2000

# INCIDENT RADIO COMMUNICATIONS PLAN (ICS 205)

Controlled Unclassified Information//Basic

<b>1. Incident Name:</b>	<b>2. Date/Time Prepared:</b>	<b>3. Operational Period:</b> 0700-2100	
PIONEER - IA N Chelan	Date: 07/12/2024 Time: 2000	Date/Time From: 07/13/2024 0700 SAT	Date/Time To: 07/13/2024 2100 SAT

**4. Basic Radio Channel Use:**

Zone Group	Ch #	Function	Channel Name/Trunked Radio System Talkgroup	Assignment	RX Freq	RX Tone/NAC	TX Freq	TX Tone/NAC	Mode (A,D, or M)	Remarks
	1	COMMAND	FIRE 1 RP		154.4300	110.9	153.8900	D051	A	LOCAL DISPATCH
	2	COMMAND	NORTH COM RP		155.3550	100.0	150.7900	100.0	A	
	3	TACTICAL	GOAT TAC RP		159.0675	110.9	153.8000	100.0	A	GOAT MTN
	4	TACTICAL	ORANGE		154.2650	107.2	154.2650	107.2	A	
	5	TACTICAL	BLACK		154.3400	151.4	154.3400	151.4	A	
	6	TACTICAL	DNR COMMON		151.4150	103.5	151.4150	103.5	A	
	7	COMMAND	DNR CHELAN RP		159.2250	156.7	151.4750	156.7	A	CHELAN BUTTE
	8	AIR TO GROUND	DNR A/G 1		159.2700	103.5	159.2700	103.5	A	
	9	COMMAND	BUTTE TAC RP		155.1225	192.8	159.0675	162.2	A	CHELAN BUTTE
	10	TACTICAL	FS WEN TAC		167.5500	000.0	167.5500	000.0	A	
	11	COMMAND	FS GOAT RP		169.8750	146.2	172.3500	118.8	A	GOAT MTN
	12	COMMAND	FS SLIDE RP		173.0500	146.2	164.9125	141.3	A	SLIDE RIDGE
	13	AIR TO GROUND	FS A/G 40		167.4500	000.0	167.4500	000.0	A	
	14	TACTICAL	FS TAC		168.2000	000.0	168.2000	000.0	A	
	15	COMMAND	FS BADGER RP		173.0500	146.2	164.9125	127.3	A	BADGER MTN
	16	TACTICAL	REDNET		153.8300	000.0	153.8300	000.0	A	

**5. Special Instructions:** 24-HOUR STAFFING: PIONEER COMMUNICATIONS PHONE NUMBER: (208) 891-8093 / CURRENT CLOSE "IA N CHELAN"

<b>6. Prepared By</b> (Communications Unit Leader)	Name: MISSY PARKER	Signature: <i>Missy Parker</i>
ICS 205	IAP Page	Date/Time: 07/12/2024 2000



# CMD RADIO

Pioneer  
WA-SES-000173  
07/13/2024

13492 acres on 7/11/2024 @ 0045

0.51 2 3 4 5 6 7 8 9

Miles



## Branch II

## Branch III

## Branch IV

## Branch V

Div A

Div D

Div S

Branch I

### General Repeater Areas

Try these repeaters if you are near these areas

- 
- CMD-7 - Chelan Butte
- CMD-8 - Old Maid
- CMD-9 - Moore Mtn
- CMD-10 - Slide
- CMD-11 - Fox Peak
- CMD-12 - Goat

- |  |                       |  |              |
|--|-----------------------|--|--------------|
|  | Helibase              |  | Staging Area |
|  | Branch Break          |  | Lookout      |
|  | Medical               |  | Repeater     |
|  | Incident Command Post |  | Safety Zone  |
|  | Camp                  |  | Fire Area    |



Stehekin

CMD9  
Moore Mtn

Moore Point

Lucerne

Lucerne

CMD8  
Old Maid

Miners Basin

CMD11  
Fox Peak

Methow

CMD 12  
Goat

CAMP FOUR

Fields Point

CMD10  
Slide

Shrine Beach

ICP

Wapato Point

Sunnybank

Chelan

CMD7  
Chelan Butte

Pioneer

Entiat

7/12/2024 2123  
CIMT NW 12 GIS



## **Resource Advice**

Lead READ: Eireann Pederson 360-854-8197, [eireann.pederson@usda.gov](mailto:eireann.pederson@usda.gov)

REAF: Brigitte Ranne 509-663-6118, [brigitte.ranne@usda.gov](mailto:brigitte.ranne@usda.gov)

REAF: Hector Rodriguez 509-393-5379, [Hector.Rodriguez3@usda.gov](mailto:Hector.Rodriguez3@usda.gov)

REAF: Carrissa Camenson 360-899-7147, [carissa.camenson@usda.gov](mailto:carissa.camenson@usda.gov)



Resource Guidelines

### *MIST for Spike Camp and Lucerne Forward Operating Base Management*

- Employ minimum impact suppression tactics (MIST) where feasible, especially in remote or sensitive areas.
- If spike camps are necessary, use existing, or previously impacted campsites where available. If existing campsites are not available; use your local resource advisor to help identify the most resilient sites in rocky or sandy soils. Avoid camping in wet meadows, along streams, or on lake shores.
- Store food properly so that it is not accessible to wildlife. Consider hanging food in trees at least 15 feet off the ground and 5 feet from the trunk of the tree, or store food in sealable containers. Store food away from the campsite (300 feet is ideal) to reduce the risk of human and bear (and rodent!) conflicts.
- Do not let garbage and food scraps accumulate in camp. All garbage and food scraps need to be removed from the camp ASAP and before leaving the site.
- Minimize disturbance to land in preparing bedding and campfire sites. Do not clear vegetation, trench, or excavate a flat spot to create bedding sites.
- Do not use nails in trees. Don't construct camp furniture.
- If a campfire is built for warmth in the evening, build either a pit or mound fire. Use dead and down firewood. Use small diameter wood that burns down more cleanly. Don't burn plastics or aluminum - pack it out with the rest of the camp garbage.
- In small spike camp situations (not Lucerne), individuals should use the "cat-hole" method of disposing of human waste. Toilet seats should be located a minimum of 200 feet from water sources. Holes should be dug 6-8 inches deep.
- In large or long term spike the camps use helicopters, boats, or pack stock to deliver portable backcountry latrines and remove human waste if necessary. If the camp does not have adequate pack, boat, or air support for human waste management, establish community latrines well away from water sources and common areas. Use human waste bags, if necessary

### *Dipping and Drafting*

- No cross-dipping between water bodies. All buckets or snorkels should be cleaned, inspected, and dried in the sun if they must be used between lakes. Dipping in small lakes must be pre-approved by the READ or AA.
- When drafting, use already disturbed areas for stream access (road crossings, dispersed campsites) to reduce the need for riparian vegetation clearing.
- Use screens (3/32" inch) for all pumping operations.
- Use containment pads and basins under pumps and fuel cans. Ensure a spill kit is present with every operating pump.

### *Invasive Species*

- The fire is burning within an infestation of common crupina, a WA State Class A Noxious weed. Prevent spread of crupina off site – plan to wash hose and other equipment. Request fire fighters brush boots before boarding boat or before entering National Park Service Land.
- Inspect slings and remove all plant/soil material prior to use.
- Ensure all camps, staging areas, helispots and cargo areas are free of invasive plants to prevent spread to un-infested areas.
- Weed wash all vehicles, including boats, when they arrive to the incident and when demobed.

### *Fisheries /Aquatic Recommendations*

- If trees must be felled in riparian areas for suppression or safety reasons, fell them toward streams where possible and minimize bucking where possible.
- Non-mechanized suppression activities are recommended within Riparian Reserves (150-300 ft from stream channel). For example, consider hand lines instead of dozer lines when feasible.

### *Retardant Use*

- Retardant avoidance areas are present in the fire suppression area for both aquatic and terrestrial species.
- Track all retardant drops – locations and amounts.
- Report all mis-applications ASAP to READ. Monitoring and reporting of misapplications is required.

### *Wet Meadows*

- No line or other disturbance in wet meadows in the Summer Blossom area (east of South Navarre campground above and below the 8200 road) and at Coyote and Poison Springs at the headwaters of their respective creeks.

### *Dry Meadows*

- Minimize disturbance from staging and parking areas in dry meadows. These areas recovery slowly and are vulnerable to invasive plant infestation.

### *White Bark Pine*

- Avoid cutting white bark pine whenever possible. Needles of 5 keep it alive! Ask READ for help with ID.

### *Burnout operations*

- Plan to protect whitebark pine of all ages and mature cold and moist forest during burnouts. READ consultation and line officer approval is required for burn plans that include these forest types.
- During burnouts modify firing to retain large trees, large snags and large down wood in forests whenever possible.
- Minimize total acres burned in burnouts.
- Incorporate typical resource protection measures used in RX burning whenever it is safe and practical to do so (such as retention of green islands in moist areas).
- Provide a map of areas that were burned as part of the burnout operation (for use in emergency consultation).
- If cultural resources are discovered during suppression activities, leave on site and notify READ.

# PIONEER US-WA-SES-000173

## Demob List for Saturday 7/13/2024

EQUIPMENT			
E-191	0730	ENG3	RATTLESNAKE RIDGE FIRE
OVERHEAD			
O-205	0800	RCDM	EVERSAUL, MARTIN
O-266	0715	TFLD	BOJORQUEZ, FRANK
O-275	0800	HECM	JARODSKY, JONATHAN HEINZ
O-287	0800	SEC1	JOHNSON, NEIL
O-290	0730	OPBD	VERELLEN, JOSH
O-297	0815	ATGS	LILIENTHAL, RICHARD JAMIE
O-302	0830	HECM	MILLER, DANIEL L
O-317	1700	SEC2	VAN ASCH, JAMES RICHARD
O-328	0745	FFT2	ROLLINS, JADE MARGUERITE
O-329	0745	FFT2	DOLAN, CHRISTOPHER MICHAEL

## Demob List for Sunday 7/14/2024

OVERHEAD			
O-194	0800	THSP	RAINS, TAYLOR
O-248	0800	TFLD	WARD, JASON HENRY
O-250	0815	DIVS	ELLIS, SETH
O-282	0815	BT25	KILFOIL, BEN
O-286	0830	SEC1	SMITH, BRIAN R
O-293	0830	IMET	KRISTELL, MADELYN BRADY
O-324	0730	HEBM	FOSTER, WILL
O-326	0830	SEC1	ZACHERLE-BOYD, TYLER

## Demob List for Monday 7/15/2024

CREWS			
C-27	0800	CRWC	BIFZ - CREW #1
EQUIPMENT			
E-90	0730	STK1	WILSON FARM LLC - C10990
E-92	0800	DZR3	BATCHELOR EXCAVATION
E-93	0815	VUTV	KWIK RESPONSE SUPPORT
E-94	0815	VUTV	KWIK RESPONSE SUPPORT
E-98	0900	TBOT	CHELAN COUNTY SHERIFFS BOAT
E-99	0800	WTS3	NW DIESEL DUDES LLC - A44464
E-105	0800	MBM2	JUSTIN PITTS TRUCKING
E-185	0730	STK2	SOOPS INDUSTRIAL INC - 108828
OVERHEAD			
O-174.60	1400	LSC3	LIPP, KELSEY ELIZABETH
O-310	0730	EMTF	REPNIK, DAVID
O-314	0800	HMGB	KEARNEY-REEVES, JESSICA R
O-321	0800	FDUL	KLINE, MAXINE
O-325	1400	PIO2	CROPP, MARY
O-346	0730	SOFR	ZUARES, DAVID

Be sure to use the most current IAP QR Code. Any questions call Demob at 500-661-5376



## **Check In Message**

- Please complete the virtual check-in process via the QR code on the front cover.
- You are not checked in until you provide the following:
  - 1) Red Cards
  - 2) Roster/Manifest
- Please email documents to: [2024.pioneer.checkin@firenet.gov](mailto:2024.pioneer.checkin@firenet.gov)

Any Questions:

Phone: 509-661-5372

Email: [2024.pioneer.checkin@firenet.gov](mailto:2024.pioneer.checkin@firenet.gov)

---

## **Demob Message**

- Fliers complete the “Air Travel Request” via the QR code on the front cover 72 hours prior to flight date.
- Return supplies to the Cache.
- Return radios, antennas, etc., to Communications.
- All contract equipment and vehicles driven in fire area will need to do weed wash.
- Contact Finance about closing out your paperwork.
- Once the above items have been completed, SCAN the QR code on the front cover and complete the demob questions.

Any Questions:

Phone: 509-661-5376

Email: [2024.pioneer.demob@firenet.gov](mailto:2024.pioneer.demob@firenet.gov)

## **PIONEER FIRE HUMAN RESOURCES**

**July 13, 2024**

### **MUTUAL RESPECT**

Wildland firefighters have one of the most challenging jobs out there. It's a dangerous and physically demanding profession that requires bravery, skill, and a deep respect for nature. Mutual respect among wildland firefighters is crucial for maintaining a safe and effective working environment. When working in high-stress situations, trust and respect for each other's expertise and decisions are essential. This helps create a cohesive team that can work together to tackle the immense challenges of wildland firefighting while staying safe and supporting one another.

#### **What is Mutual Respect?**

- The responsibility of an individual to behave in a manner that treats people with dignity and respect, coupled with the right one has to receive the same treatment from others.
- All employees have a responsibility to behave in a manner that ensures a work environment exists where people are treated with dignity and respect, just as they have a right to work in an environment where they are treated with dignity and respect.
- This type of responsible behavior supports a positive work environment and is considered appropriate behavior.

Margaret Dietrich,  
Human Resource Specialist 360-701-3154

Union Representation Local 34, Katijo Maher, 360-677-2414 [Katijo.Maher@usda.gov](mailto:Katijo.Maher@usda.gov)



# Finance Message



Scan this QR code to submit documents to finance.



SUBJECT: *Include Key Word **TIME** for Overhead, Crews & Cooperators*

SUBJECT: *Include Key Word **EQUIPMENT** for Contract Resources*

Phone: 484-501-1835

Finance Email: [2024.pioneer.finance@firenet.gov](mailto:2024.pioneer.finance@firenet.gov)

**Please submit the below listed documents to the finance for Check-in, Daily processing and Demob.**

Overhead, Crews & Cooperator Resources	Contract Resources
<ul style="list-style-type: none"> <li>• <b>Check-In:</b> Crew Manifest, Cooperative Agreement (if applicable), AD Hire Letter, Resource Order</li> <li>• <b>Daily:</b> Crew Time Report (CTR), Shift Tickets</li> <li>• <b>Demob:</b> Signed OF288, Final Equipment Use Invoice (Cooperator). If you don't have a way to sign you must come to finance.</li> </ul>	<ul style="list-style-type: none"> <li>• <b>Check-In:</b> Resource Order, Contract/VIPR Agreement (make sure you have your UEI), Pre-Inspection, Crew Manifest</li> <li>• <b>Daily:</b> Shift Tickets, receipts (fuel issues, claims, etc.)</li> <li>• <b>Demob:</b> Contractor Evaluations, Final Shift Tickets and receipt(s) for Addition/Deductions, Post-Inspection, Final Signed Invoices. If you don't have a way to sign you must come to finance</li> </ul>

## REMINDERS

- ★ PLEASE SHOW YOUR LUNCH BREAK
- ★ PLEASE USE MILITARY TIME (0001-2400)
- ★ WHEN CLAIMING HAZARD PAY YOU MUST INCLUDE THE SUPPRESSION ACTION BEING PERFORMED. THIS INCLUDES OPERATIONS WHICH DIRECTLY SUPPORT CONTROL OF FIRE (E.G., ACTIVITIES TO EXTINGUISH THE FIRE, FIREFIGHTING, GROUND SCOUTING, SPOT FIRE PATROLLING, SEARCH AND RESCUE OPERATIONS, AND BACKFIRING).
- ★ CTRS SHOULD BE NAMED AS: CTR\_RO#\_YYMMDD-DD (EX: CTR\_O235\_240605-07)
- ★ SHIFT TICKETS SHOULD BE NAMED AS: ST\_RO#\_YYMMDD-DD (EX: ST\_E5\_240624-27)
- ★ PLEASE MAKE SURE YOU SEE FINANCE AND MEDLS FOR MINOR INJURIES. AGENCY PEOPLE WILL NOT HAVE CLAIMS PAID IF THEY DON'T FOLLOW PROTOCOLS.
- ★ **FOR AN EXPEDIANT DEMOBING PROCESS PLEASE MAKE SURE YOU HAVE NO OUTSTANDING CLAIMS, ALL TIME AND REQUIRED CHECK IN DOCUMENTS HAVE BEEN SUBMITTED BEFORE YOU COME TO FINANCE TO CHECK-OUT.**

# PIONEER FIRE LOGISTICS MESSAGE

	ICP @ MANSON	LUCERNE FOB
Kitchen	Breakfast 0530-0900 Dinner 1730-2100	Breakfast 0600-0900 Dinner 2030-2130
Lunch/Water/Ice	0500-2100	Pick up with breakfast
Shower	0500-1200 1400-2200	0500-1200 1400-2200
Adventure Medic Trailer	0530-2200	
Supply	0600-2200	0600-2200
Ordering	0600-2200	
Fuel Tender	0600-2030	
Ground Support	0600-2200	
Weed Wash	0700-1400 1600-2000	

**Note:** For resources traveling up-lake, there is no cell service in many areas. It is recommended that you set up WiFi calling on your phone prior to leaving cell service.

## CONTACT INFORMATION

UNIT	EMAIL	PHONE
Communications	(none)	(208) 891-8093
Finance	2024.pioneer.finance@firenet.gov	(484) 501-1835
Ordering	2024.pioneer.ordering@firenet.gov	(484) 501-1821
Ground Support	(none)	Dave (509) 688-7144 Tom (360) 520-5232
Check-In	2024.pioneer.checkin@firenet.gov	(509) 661-5372
Demob	2024.pioneer.demob@firenet.gov	(509) 661-5376
Situation	2024.pioneer.situation@firenet.gov	
Resources	2024.pioneer.resources@firenet.gov	
Planning	2024.pioneer.plans@firenet.gov	
Documentation	2024.pioneer.docs@firenet.gov	





# Example General Message (ICS-213) for Boat Transportation

\*\* PLEASE USE THE TEMPLATE BELOW TO REQUEST BOAT TRANSPORTATION \*\*

Boat Group Contact Information:  
 Sam Steinshouer, DIVS, (509) 675-5008 or [sam.steinshouer@dnr.wa.gov](mailto:sam.steinshouer@dnr.wa.gov)  
 Seth Ellis, DIVS (T), (509) 860-3290 or [seth.ellis453@gmail.com](mailto:seth.ellis453@gmail.com)

## GENERAL MESSAGE (ICS 213)

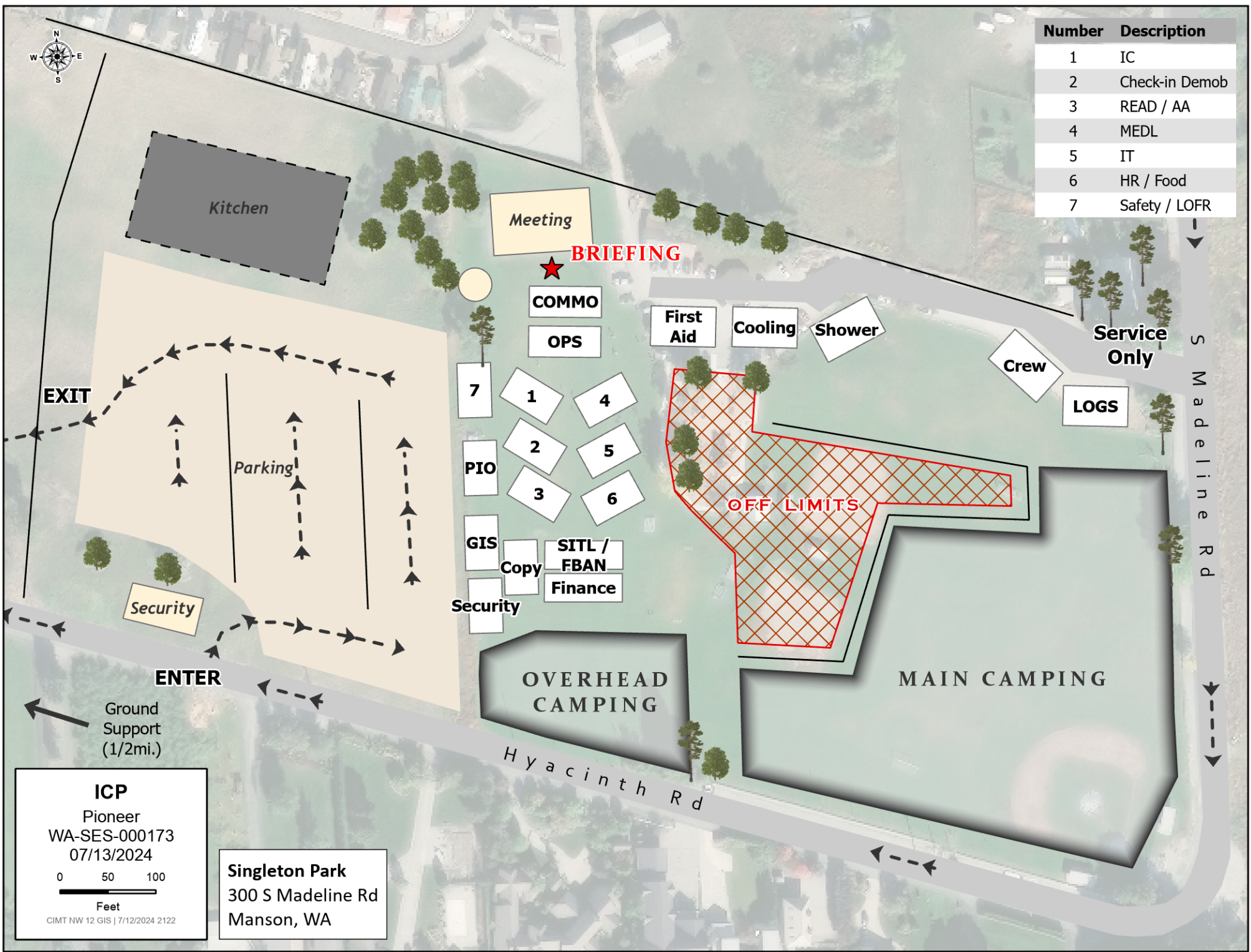
1. Incident Name (Optional): Pioneer Fire		
2. To (Name and Position): Sam Steinshouer, DIVS / Seth Ellis, DIVS (T)		
3. From (Name and Position):		
4. Subject: Ferry Tickets	5. Date:	6. Time
7. Message:		
SAMPLE GENERAL MESSAGE FORM WITH REQUIRED INFORMATION		
O# or C# _____		
Departure Date _____		
Ferry Ticket Departure Location (Chelan / Fields Point / Lucerne / Stehekin) _____		
Ferry Ticket Arrival Location (Chelan / Fields Point / Lucerne / Stehekin) _____		
Email Address for Confirmation _____		
** If unable to receive email, please note and tickets will be emailed to either your DIVS or the Boat Coordinator. **		
Phone Number _____		
FERRY TICKETS NEED TO BE SUBMITTED TO BOAT DIVS BY 1600 THE DAY PRIOR TO DESIRED DEPARTURE.		
IT IS PREFERRED FORMS ARE SUBMITTED 48-HOURS PRIOR TO KNOWN AND SET LWD.		
8. Approved by: Name: _____ Signature: _____ Position/Title: _____		
9. Reply:		

## BOAT RESOURCES WITH CAPACITY

Request #	Description	Capacity (# people)
E-1	TBOT WA-NCP	5
E-3	TBOT CHELAN CO F&R #7	6
E-12	TBOT CHELAN RANGER DISTRICT	8-10
E-43	TBOT LK CHELAN LLAMAS & UPTAKE ADVENTURES	8-10
E-91	TBOT DNR MUD PUPPY 24' ALUMINUM BOWLOADER	8
E-98	TBOT CHELAN COUNTY SHERIFF	12
E-120	TBOT PILGRIM LAKE SERVICES	5
E-121	TBOT BRINNON FIRE	6
E-201	TBOT NRC ENVIRONMENTAL SERVICES	6
E-202	TBOT NRC ENVIRONMENTAL SERVICES	6
E-295	TBOT NRC ENVIRONMENTAL SERVICES	16-18
E-296	TBOT NRC ENVIRONMENTAL SERVICES	16-18
E-297	TBOT NRC ENVIRONMENTAL SERVICES	16-18



Number	Description
1	IC
2	Check-in Demob
3	READ / AA
4	MEDL
5	IT
6	HR / Food
7	Safety / LOFR

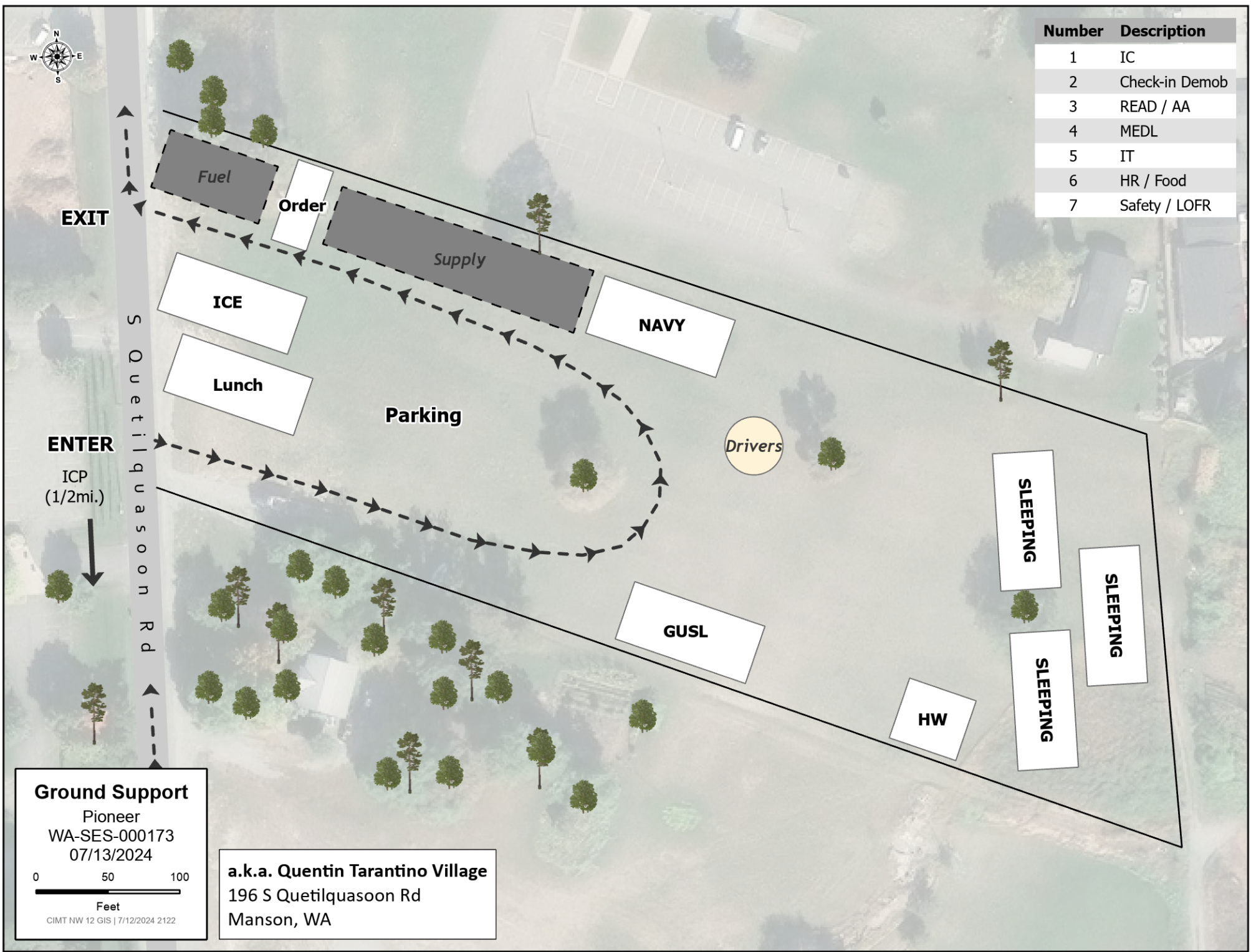


**ICP**  
 Pioneer  
 WA-SES-000173  
 07/13/2024  
 0 50 100  
 Feet  
 CIMT NW 12 GIS | 7/12/2024 2122

**Singleton Park**  
 300 S Madeline Rd  
 Manson, WA

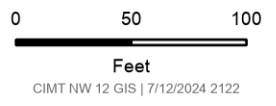


Number	Description
1	IC
2	Check-in Demob
3	READ / AA
4	MEDL
5	IT
6	HR / Food
7	Safety / LOFR



**Ground Support**

Pioneer  
 WA-SES-000173  
 07/13/2024



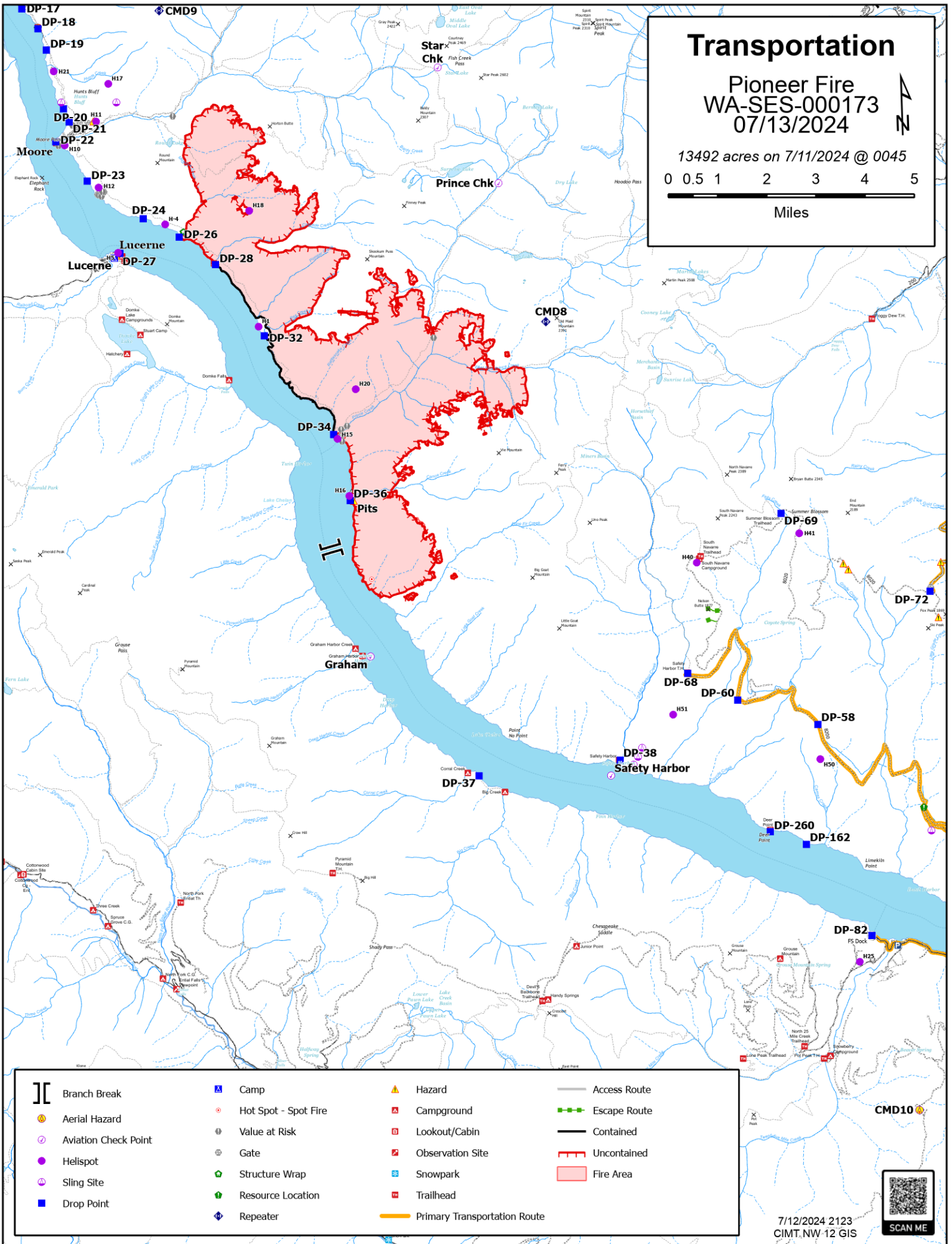
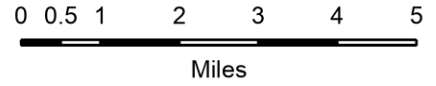
**a.k.a. Quentin Tarantino Village**  
 196 S Quetilquasoon Rd  
 Manson, WA



# Transportation

Pioneer Fire  
WA-SES-000173  
07/13/2024

13492 acres on 7/11/2024 @ 0045



Branch Break	Camp	Hazard	Access Route
Aerial Hazard	Hot Spot - Spot Fire	Campground	Escape Route
Aviation Check Point	Value at Risk	Lookout/Cabin	Contained
Helispot	Gate	Observation Site	Uncontained
Sling Site	Structure Wrap	Snowpark	Fire Area
Drop Point	Resource Location	Trailhead	
	Repeater	Primary Transportation Route	

7/12/2024 2123  
CIMT.NW.12.GIS







## **Pioneer Fire-Manson ICP**

### **In Camp Medical Procedure**

#### **If Red or Yellow**

Yell for help and stay with patient

Provide first aid as appropriate

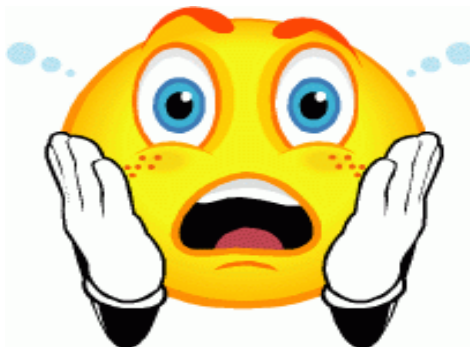
Call 911

Contact Pioneer communications at **208-891-8093** or by radio

#### **If Green**

Go to Adventure Medical Trailer for evaluation and treatment

(Near playground)



# Public Information

**PHOTOS:** Your fireline photos help us build understanding with the public. Community members want to see what you see because you go where others can't safely go. We are looking for any pictures of the fire line, mop-up work, and **fire resources working on the fire line in their PPE**. You can send photos to:

Email: [2024.pioneer@firenet.gov](mailto:2024.pioneer@firenet.gov)  
Text: 509-388-1475

As always, make sure you're wearing all your PPE and conveying a professional, caring, and respectful attitude toward the homes and land in this community. Thanks for helping us out!

**LOST AND FOUND:** We have a few items in the information trailer, just inside the door to the left. If you have lost something, please stop by and see if it has been turned in. If you find something left around camp, you can turn it in to us.

**QUESTIONS FROM THE PUBLIC:** If community members have questions that you do not feel equipped to answer professionally, please give them our fire information line: 541-861-5808.

The public may access information by scanning the QR code below.





# EMERGENCY PLAN INCIDENT WITHIN AN INCIDENT

## ON SCENE INCIDENT COMMANDER

In the event of an accident or medical incident of any size, your primary responsibility is to ENSURE that the victim(s) receive prompt and effective Triage, Treatment, Extrication and Transport.

- **ENSURE THE MEDICAL INCIDENT REPORT IN THE INCIDENT ACTION PLAN IS BEING USED AND FOLLOWED- \*IF DETERMINED TO BE A GREEN, DO NOT DECLARE EMERGENCY TRAFFIC AND ONLY COMPLETE LINE 1-4 ON MIR\*.**
- Conduct size-up of the incident nature of accident, number type of resources involved, latitude and longitude location (DD°MMM.MM format): notify incident communications center and supervisor, request assistance as needed.
- Order and coordinate medical and support response to the accident.
- Evaluate special needs (law enforcement, haz mat, etc.).
- Clear the command frequency if medical emergency, coordinate with incident communications and air attack for air medical transportation needs.
- Preserve and photograph the scene for accident investigation.
- Remain aware of surroundings and the status of the main incident (delegate personnel to monitor the main fire) to ensure safety of medical treatment personnel.
- Until relieved, supervise and manage all personnel involved at the incident scene.



# MEDICAL PLAN (206 WF)

1. Incident/Project Name			2. Operational Period				
<b>Pioneer Fire</b>			Date/Time: <b>07/13/24 0700-2100</b>				
3. Ambulance Services							
Name	Complete Address	Phone	Advanced Life Support (ALS)				
			Yes	No			
Lake Chelan EMS	Chelan, WA	911	X				
Douglas/Okanagan County Fire	Brewster, WA	911		X			
4. Air Ambulance Services							
Name	Phone/Channel	Frequency, Type of Aircraft & Capability					
Life Flight - Brewster	1-800-232-0911 911	VMED 29, Rotor, ALS, 24 hr					
Airlift NW - Wenatchee	1-800-426-2430 911	VMED 29, Rotor, ALS, 24 hr					
Medivac Ship	Command 7,8,9,10,11,12 (Linked)	VMED 29, Rotor, BLS, Daytime 971-762-8575 pioneer helibase 47 51.96N 119 55.56W					
Mount Rainer Short Haul	Command 7,8,9,10,11,12 (Linked)	VMED 29, Rotor, BLS, Daytime, Short Haul					
Snohawk 10 - Snohomish	1-800-258-5990 911	VMED 29, Rotor, ALS, Daytime, Hoist					
Spokane County Hoist - Spokane	1-509-532-8930 911	VMED 29, Rotor, ALS, 24 hr, Hoist Daytime Only					
5. Hospitals							
Name	Degrees Decimal Minutes	Travel Time From Fire		Phone	Helipad		Level of Care
		Air	Boat		Yes	No	
Lake Chelan Health 110 S. Apple Blossom Drive Chelan WA	Lat: 47° 50' 20 N	30 Min	3 Hr	509-683-2474		X	Level IV Trauma
	Long: 119° 59' 20 W						
Central Washington Hospital (Confluence Health Central Campus) 1201 S. Miller Wenatchee WA	Lat: 47° 24. 43 N	30 Min	4 Hr	509-433-3115	X		Level III Trauma
	Long: 120° 19. 28 W						
Harborview Medical Center 325 9 <sup>th</sup> Ave Seattle WA	Lat: 47° 36. 24 N	1.5 Hr	6 Hr	206-744-4025	X		Level I Trauma Burn Center
	Long: 122° 19. 45 W						
<b>ICP</b>	<b>EMS Responders &amp; Capability:</b>		Diana Braun		MEDL/EMTF	509-348-0091	
			Ben Elkind		MEDL(T)/EMTF	503-201-2495	
			Cass Monroe		MEDL(T)/EMTF	509-724-0843	
			Morgan De Marco		RN / EMTF / MED TRAILER	973-735-3577	
			Jarren Bennett		EMTF/ MED TRAILER	320-390-2282	
	Equipment Available on Scene:		AED, BLS Kit, OTC Meds, Rx Meds, Urgent Care Facility				
	Medical Emergency Channel:		Command 7, 8, 9, 10, 11 (Linked)				
	ETA for Ambulance to Scene:						
	Air:		NA				
	Ground:		15 Min				
Approved Heli-Spot:		NA					
Lat:		NA					
Long:		NA					
<b>LUCERNE FOB</b>	<b>EMS Responders &amp; Capability:</b>		Londa Van Kirk		MEDL/EMTF (Lucerne FOB)	360-815-7645	
			MEDIC 9 Benjamin McCall		(Air Medical)	360-420-6492	
			MEDIC 2 Michael Poe		Air Medic-t	580-695-9363	
			MEDIC 10 Sean Hendron		(Boat Medical)	443-851-2014	
			MEDIC 1 Christopher Jackson		Boat Medic -t	334-707-1468	
	Equipment Available on Scene:		ALS Kit, AED, O2, OTC meds				
	Medical Emergency Channel:		Command 7, 8, 9, 10, 11 (Linked)				
	ETA for Ambulance to Scene:						
	Air:		2 hr				
	Water/Ground:		3 hr				
Approved Heli-Spot:							
Lat:		<b>H5 48° 12.1624' N</b>					
Long:		<b>120° 35.4476' W</b>					

## MEDICAL PLAN (206 WF)

<b>BRANCH I/II DIV A</b>	<b>EMS Responders &amp; Capability:</b>	<b>EMT 5 Dave Repnik (DIV A)</b> 509-881-4771 <b>MEDIC 12 Ethan Biederman (DIV A)</b> 513-882-2837 <b>MEDIC 14 Laura Krause (Div A)</b> 360-880-3414
	Equipment Available on Scene:	ALS Kit, Monitor/Defib, O2
	Medical Emergency Channel:	Command 7, 8, 9,10, 11 (Linked)
	ETA for Ambulance to Scene:	
	Air:	2 hr
	Water/Ground:	3 hr
	Approved Heli-Spots:	
	<b>H1 48° 10.813' N</b>	<b>H11 48° 14.492' N</b> <b>H15 48° 08.754' N</b>
	<b>120° 31.925' W</b>	<b>120° 35.922' W</b> <b>120° 29.813' W</b>
	<b>H10 48° 14.099' N</b>	<b>H12 48° 13.381' N</b> <b>H16 48° 07.744' N</b>
	<b>120° 36.782'W</b>	<b>120° 35.919' W</b> <b>120° 29.541' W</b>
	Lat:	NA
	Long:	NA

<b>BRANCH I/II DIV D</b>	<b>EMS Responders &amp; Capability:</b>	<b>REMS 2 David LaPearl (DIV D)</b> 541-912-6118 <b>Jed Getman MEDL(T)/AEMF (Stehekin FOB)</b> 541-391-3243
	Equipment Available on Scene:	ALS Kit, Monitor/Defib, O2, Rescue Gear
	Medical Emergency Channel:	Command 7, 8, 9, 10, 11 (Linked)
	ETA for Ambulance to Scene:	
	Air:	2 hr
	Ground:	3 hr
	Approved Heli-Spot:	
	Lat:	<b>H14 48° 20.760' N</b>
	Long:	<b>120° 43.242' W</b>

<b>BRANCH IV DIV S Contingency Roads Firing</b>	<b>EMS Responders &amp; Capability:</b>	<b>AMBO 2 Anna Reynolds+1 (CONTINGENCY)</b> 509-768-5519 <b>MEDIC 13 Anthony Bylski (CONTINGENCY)</b> 248-752-5511 <b>MEDIC 7 Joshua Gray (CONTINGENCY)</b> 615-499-8461 <b>REMS 3 Ron Pearsall +3 (CONTINGENCY)</b> 360-791-6896 <b>MEDIC 11 Savannah Mclaughlin (DIV S)</b> 435-590-4952 <b>REMS 1 Rick Bostain + 3 (DIV S)</b> 479-422-0462 <b>MEDIC 15 Robert Ruzala (DIV S)</b> 253-905 4304 <b>AMBO 3 Kyle Kemerer +1 (DIV S)</b> 650-868-2803 <b>RAT 1 Emma Garrett +1 (DIV S)</b> 313-952-4679
	Equipment Available on Scene:	ALS Kit, Monitor/Defib, O2, Rescue Gear
	Medical Emergency Channel:	Command 7, 8, 9, 10, 11,12 (Linked)
	ETA for Ambulance to Scene:	
	Air:	2 hr
	Ground:	3 hr
	Approved Heli-Spot:	NA
	Lat:	NA
	Long:	NA

<b>BRANCH V Staging Structure Boat Lake Shore</b>	<b>EMS Responders &amp; Capability:</b>	<b>MEDIC 16 Kelly Max (Lake Shore)</b> 520-508-4486 <b>MEDIC 17 Trevor Leary (Structure)</b> 724-991-5564
	Equipment Available on Scene:	ALS Kit, Monitor/Defib, O2, Rescue Gear
	Medical Emergency Channel:	Command 7, 8, 9, 10, 11, 12 (Linked)
	ETA for Ambulance to Scene:	
	Air:	2 hr
	Ground:	3 hr
	Approved Heli-Spot:	
	Lat:	<b>H25 47° 59.200' N</b>
Long:	<b>120° 16. 521' W</b>	

<b>TBD</b>	<b>EMS Responders &amp; Capability:</b>	TBD
	Equipment Available on Scene:	
	Medical Emergency Channel:	Command 7,8,9,10,11 (Linked)
	ETA for Ambulance to Scene:	
	Air:	
	Ground:	
	Approved Heli-Spot:	NA
	Lat:	NA
Long:	NA	

<b>Prepared By (Medical Unit Leader)</b>	<b>Date</b>	<b>Reviewed By (Safety Officer)</b>	<b>Date</b>
Ben Elkind	07/12/24	Josh Northrup SOFC	07/12/24
Signature: <i>Ben Elkind</i>		Signature: <i>Josh Northrup</i>	

# MEDICAL PLAN (ICS 206 WF)

Controlled Unclassified Information//Basic

## Medical Incident Report

**FOR A NON-EMERGENCY INCIDENT, WORK THROUGH CHAIN OF COMMAND TO REPORT AND TRANSPORT INJURED PERSONNEL AS NECESSARY.**

**FOR A MEDICAL EMERGENCY: IDENTIFY ON SCENE INCIDENT COMMANDER BY NAME AND POSITION AND ANNOUNCE "MEDICAL EMERGENCY" TO INITIATE RESPONSE FROM IMT COMMUNICATIONS/DISPATCH.**

Use the following items to communicate situation to communications/dispatch.

1. CONTACT COMMUNICATIONS / DISPATCH (**Verify correct frequency prior to starting report**)

*Ex: "Communications, Div. Alpha. Stand-by for Emergency Traffic."*

2. INCIDENT STATUS: *Provide incident summary (including number of patients) and command structure.*

*Ex: "Communications, I have a Red priority patient, unconscious, struck by a falling tree. Requesting air ambulance to Forest Road 1 at (Lat./Long.) This will be the Trout Meadow Medical, IC is TFLD Jones. EMT Smith is providing medical care."*

Severity of Emergency / Transport Priority	<input type="checkbox"/> RED / PRIORITY 1 Life or limb threatening injury or illness. Evacuation need is IMMEDIATE <i>Ex: Unconscious, difficulty breathing, bleeding severely, 2° – 3° burns more than 4 palm sizes, heat stroke, disoriented.</i> <input type="checkbox"/> YELLOW / PRIORITY 2 Serious Injury or illness. Evacuation may be DELAYED if necessary. <i>Ex: Significant trauma, unable to walk, 2° – 3° burns not more than 1-3 palm sizes.</i> <input type="checkbox"/> GREEN / PRIORITY 3 Minor Injury or illness. Non-Emergency transport <i>Ex: Sprains, strains, minor heat-related illness.</i>	
Nature of Injury or Illness & Mechanism of Injury		<i>Brief Summary of Injury or Illness (Ex: Unconscious, Struck by Falling Tree)</i>
Transport Request		<i>Air Ambulance / Short Haul/Hoist Ground Ambulance / Other</i>
Patient Location		<i>Descriptive Location &amp; Lat. / Long. (WGS84)</i>
Incident Name		<i>Geographic Name + "Medical" (Ex: Trout Meadow Medical)</i>
On-Scene Incident Commander		<i>Name of on-scene IC of Incident within an Incident (Ex: TFLD Jones)</i>
Patient Care		<i>Name of Care Provider (Ex: EMT Smith)</i>

3. INITIAL PATIENT ASSESSMENT: *Complete this section for each patient as applicable (start with the most severe patient)*

Patient Assessment: See IRPG page 106

Treatment:

4. TRANSPORT PLAN:

Evacuation Location (if different): *(Descriptive Location (drop point, intersection, etc.) or Lat. / Long.)* Patient's ETA to Evacuation Location:

Helispot / Extraction Site Size and Hazards:

5. ADDITIONAL RESOURCES / EQUIPMENT NEEDS:

*Example: Paramedic/EMT, Crews, Immobilization Devices, AED, Oxygen, Trauma Bag, IV/Fluid(s), Splints, Rope rescue, Wheeled litter, HAZMAT, Extrication*

6. COMMUNICATIONS: Identify State Air/Ground EMS Frequencies and Hospital Contacts as applicable

Function	Channel Name/Number	Receive (RX)	Tone/NAC *	Transmit (TX)	Tone/NAC *
COMMAND					
AIR-TO-GRND					
TACTICAL					

7. CONTINGENCY: **Considerations:** *If primary options fail, what actions can be implemented in conjunction with primary evacuation method? Be thinking ahead.*

8. ADDITIONAL INFORMATION: *Updates/Changes, etc.*

**REMEMBER:** Confirm ETA's of resources ordered. Act according to your level of training. Be Alert. Keep Calm. Think Clearly. Act Decisively.

Controlled Unclassified Information//Basic