

# Incident Action Plan

# Pioneer Fire

Operational Period  
 Sunday, July 14, 2024  
 Dayshift - 0700 to 2100



**WA-SES-000173**  
 USFS: PN RZ79 (1522)  
 DOI: RZ79  
 WA DNR: 221-LDW



Maps, IAP,  
 Finance &  
 Briefing  
 Link




	Ground	Air
FS:		
DNR:		
OSC:		
FS AA:		
DNR AA:		

## INCIDENT OBJECTIVES (ICS 202)

<b>1. Incident Name:</b>	<b>2. Operational Period: 0700-2100</b>	
PIONEER	Date/Time From: 07/14/2024 0700      SUN	Date/Time To: 07/14/2024 2100      SUN
<b>3. Objective(s):</b>		
<p><u>Strategic Framework</u>                      The Pioneer Fire is a full suppression fire utilizing strategies and tactics that provide the highest likelihood of success while mitigating risks to the responders and public. Extreme terrain prevents direct attack. Indirect lines are being identified and established that reduces risk to responders while protecting identified values including private and federal infrastructure and recreational values.</p>		
<p><u>Management Objectives</u></p> <ul style="list-style-type: none"> <li>• Ensure the safety and well-being of responders and the public by making timely risk-informed decisions that align with values at risk.</li> <li>• Protect private and federal infrastructure and recreational values.</li> <li>• Foster relationships with local cooperators and the public by providing coordinated, accurate and timely information.</li> <li>• Coordinate suppression activities with READ's to identify and mitigate current and future impacts to the landscape and resources.</li> <li>• Treat each other with dignity and respect and act in a professional manner on the fire and in the communities.</li> <li>• Manage cost commensurate with values at risk by coordinating with the Agency Administrators and Incident Business Advisors.</li> </ul>		
<b>4. Operational Period Command Emphasis:</b>		
<ul style="list-style-type: none"> <li>• Implement an effective suppression strategy utilizing direct attack where and when appropriate to protect values at risk. When fire behavior, terrain or safety concerns prohibit direct attack, utilize other suppression tactics such as indirect and point protection as appropriate to reduce risk to responders. Take advantage of natural features such as breaks in fuels, topographic features, or changes in weather.</li> <li>• Establish indirect control lines with the highest probability of success which prevent fire spread into populated areas.</li> <li>• Communicate with local law enforcement officials to ensure current and potential evacuations are coordinated.</li> </ul>		
<b>General Situational Awareness:</b>		
<p>A Heat Advisory is in effect through Sunday night, with temperatures well above normal. Responders are urged to prioritize personal safety in the heat by staying hydrated, taking breaks, and seeking shade or cooler environments.</p> <p>All incident personnel should be familiar with the Incident Response Plan and understand their role in supporting an Incident within an Incident (IWI). The Pioneer fire has unique challenges with excessive travel times and methods. Do not rely solely on one method of transport or extraction. Be mindful of weather, terrain, travel time and access limitations that could potentially cause delay in providing triage, treatment, extrication and transport of injured personnel.</p>		
<b>5. Site Safety Plan Required?</b> Yes <input type="checkbox"/> No <input checked="" type="checkbox"/>		
<b>Approved Site Safety Plan(s) Located at:</b>		
<b>6. Incident Action Plan</b> (the items checked below are included in this Incident Action Plan):		
<input checked="" type="checkbox"/> ICS 202 <input checked="" type="checkbox"/> ICS 203 <input checked="" type="checkbox"/> ICS 204 <input checked="" type="checkbox"/> ICS 205 <input type="checkbox"/> ICS 205A <input checked="" type="checkbox"/> ICS 206	<input type="checkbox"/> ICS 207 <input checked="" type="checkbox"/> ICS 208 <input checked="" type="checkbox"/> ICS 220 <input checked="" type="checkbox"/> Map/Chart <input checked="" type="checkbox"/> Weather Forecast/Tides/Currents	Other Attachments: <input checked="" type="checkbox"/> HR MESSAGE <input checked="" type="checkbox"/> LOGISTICS MESSAGE <input checked="" type="checkbox"/> ICS 214 - UNIT LOG <input type="checkbox"/> _____
<b>7. Prepared by:</b> JILL JOHNSON	<b>Position/Title:</b> PSCC	<b>Signature:</b> <i>Jill Johnson</i>
<b>8. Approved by Incident Commander:</b>	<b>Name:</b> JEFF DIMKE	<b>Signature:</b> <i>Jeff Dimke</i>
<b>ICS 202</b>	<b>IAP Page</b>	<b>Date/Time:</b> 07/13/2024 2000

## ORGANIZATION ASSIGNMENT LIST (ICS 203)

<b>1. Incident Name:</b>		<b>2. Operational Period:</b> 0700-2100	
PIONEER		Date/Time From: 07/14/2024 0700	SUN
		Date/Time To: 07/14/2024 2100	SUN
<b>3. Incident Commander(s) and Command Staff:</b>			
IC/UC	JEFF DIMKE	MEDICAL UNIT	DIANA BRAUN; LONDA VAN KIRK; BEN ELKIND(T)
DEPUTY	BOB SHINDELAR		CASS JACKSON(T); JED GETMAN(T)
SAFETY OFFICER	TAIJA CORSO; MARSHALL BROWN JUSTIN RANDALL (T)	SECURITY UNIT	RON TAYLOR
INFORMATION OFFICER	JOEL BRUMM; HEATHER APPELHOF	FOOD UNIT	KAREN HAUTER DEBBY BERDINE; STEVE BALES (T)
LIAISON OFFICER	JEFF SEVIGNEY; JOHN JOHNSON (T) JON MEIER; COLLIN HAFFEY (T)	<b>7. Operations Section:</b>	
HUMAN RESOURCE SPECIALIST	MARGARET DIETRICH	OPS SECTION CHIEF	AARON ROWE, LONNIE NEWTON (T)
<b>4. Agency/Organization Representative(s):</b>		PLANNING OPS SECTION CHIEF	KURT RANTA, ROB POYNER (T)
<b>Agency/Organization</b>	<b>Name</b>	STRATEGIC OPS SECTION CHIEF	TONY ENGEL, MIKE DAVIS (T)
USFS OKA/WEN AGENCY ADMIN	CHRIS FURR;PAUL WILLARD (T)	<b>Branch I/II</b>	
DNR AGENCY ADMIN	LARRY LEACH; WYATT LEIGHTON	BRANCH DIRECTOR	SCOTT EBEL, JESSE BOHNSACK, CODY ACORD (T)
NPS AGENCY ADMIN	DON STRIKER	DIVISION/GROUP	A SHAWN OTTO, CHRIS RAMISKEY (T)
NPS AGENCY REP	DENISE SHULTZ	DIVISION/GROUP	D BRETT JOHNSON, PAUL KIMBALL (T)
USFS LEAD READ	EIREANN PEDERSON	<b>Branch IV</b>	
NPS LEAD READ	JACK OELFKE	BRANCH DIRECTOR	TIMOTHY BARNETT
<b>5. Planning Section:</b>			
CHIEF	HOWARD JOHNSON; JILL JOHNSON	DIVISION/GROUP	S MATT KENNEDY, JULIUS JACOBSEN (T)
RESOURCES UNIT	JENNIFER NORTON; CHRIS VOLK	DIVISION/GROUP	CONTINGENCY HEIDI SPRENGER, ROY BOOTS (T)
SITUATION UNIT	MATT PROVENCHER; STEPHEN SEWELL (T)	DIVISION/GROUP	ROADS FIDEL VERDUZCO, ERINKATE SPRINGER(T)
DOCUMENTATION UNIT	DEIDRE SMITH	DIVISION/GROUP	STAGING MIKE EMERICK
DEMOBILIZATION UNIT	MIKE HESTON	<b>Branch V</b>	
FIRE BEHAVIOR ANALYST	STEVE ZIEL	BRANCH DIRECTOR	JEROMY WILSON
GIS SPECIALIST	SHAWN BUSHNELL; MIKE TONKEL DEAN RAFTIS	DIVISION/GROUP	LAKE SHORE JON STONELAKE, NICK WIGLE (T)
TECHNOLOGY SUPPORT SPECIALIST	GEORGE JENKINS; LIBBY EVERETT (T) JUSTIN LEACH (T)	DIVISION/GROUP	BOAT SAM STEINHOUER, TOSTEN KULAAS (T)
INCIDENT METEOROLOGIST	BOB TOBIN (T)	DIVISION/GROUP	STRUCTURE/IA SCOTT CLEAVE
AIR RESOURCE ADVISOR	TOM PIERCE	<b>7b. Air Operations Branch:</b>	
<b>6. Logistics Section:</b>			
CHIEF	KEVIN HAUGHTON; THAD FRATER (T) WHIT SPENCER; BRIAN MCGINLEY; KELSEY LIPP	AIR OPS BRANCH DIRECTOR	PAUL BALFOUR;KELLY HEDGEPEETH(T)
SUPPLY UNIT	JOHN KAUPA	AIR SUPPORT SUPERVISOR	TIM LYDA
FACILITIES UNIT	KAREN ZIRKLE MIKE POST; JOHN DREYER	<b>8. Finance/Administration Section:</b>	
GROUND SUPPORT UNIT	DAVE HARSH TOM FORTIN; HEATH KESSI (T)	CHIEF	CHRISTINA GOEBEL;STEVE CROW (T)
COMMUNICATIONS UNIT	MISSY PARKER; CHARLES BARNES	TIME UNIT	CHERI FULLER; LARCI MILLER (T)
		PROCUREMENT UNIT	TODD POWELL; PETER BIDIGARE (T)
		COST UNIT	KAY HIGH
		INC CONTRACT PROJ INSP	ROB HECHINGER
<b>9. Prepared By:</b> Name: JILL JOHNSON		Position/Title: PSCC	Signature: 
ICS 203	IAP Page	Date/Time: 07/13/2024 2000	



# Fire Weather Forecast



**FORECAST NO:** 32  
**PREDICTION FOR:** 24 Hr Shift  
**SHIFT DATE:** Sunday 7/14/2024  
**TIME AND DATE ISSUED:** 7/13/2024 1900 hrs

**INCIDENT:** Pioneer Fire  
**SIGNED:** *Bob Tobin*  
Incident Meteorologist

**Discussion:**

**\*\*\*Heat Advisory in Effect Through Tonight\*\*\***

Westerly flow has set up across the Pacific Northwest over the last 24 hours. This will keep temperatures well on the warm side of normal. As such, the reason for the Heat Advisory. It has also increased the moisture moving into the region allowing for slightly higher relative humidity and better overnight recoveries. Today, expect up-lake, up-slope wind in the morning, becoming northwest winds in the afternoon, and gusty in the evening and late night hours. We are keeping an eye on some changes to the pattern by mid-week for increased moisture and cooler temperatures.

**WEATHER FORECAST FOR TODAY:**

**SKY/WEATHER:** Sunny and hot. Smoke in the morning and in valleys, mixing out in the afternoon.  
**MAX TEMPERATURE:** 94 to 100 valleys/mid-slopes. 77 to 82 around 5000 feet.  
**MIN RH:** 12 to 18 percent valleys/mid-slopes. 18 to 24 percent ridges.  
**20 FT WINDS:**  
**Lower Valleys:** West to Northwest 5 to 10 mph gusting 22 mph.  
**Mid-slopes and Ridges:** Northwest in the afternoon 12 to 16 mph gusting to 27 mph.  
**HAINES INDEX:** 4 Moderate.  
**TRANSPORT WINDS:** Northwest 10-15 mph.  
**INVERSION:** Moderate to strong low level inversion lifting by 1000. Mixing Height 10000 ft by 1200.

**TONIGHT:**

**SKY/WEATHER:** Mostly Clear. Smoke will settle in valleys near Chelan and in drainages near the fire.  
**MIN TEMPERATURE:** 65 to 72 valleys/mid-slopes. 53 to 58 around 5000 feet.  
**MAX RH:** 32 to 40 percent valleys/mid-slopes. 45 to 55 percent ridges around 5000 feet.  
**20 FT WINDS:**  
**Valleys/Lower Slopes:** Northwest down lake 8 to 12 mph in the evening gusting to 25 mph, especially after midnight.  
**Mid-Slopes and Ridges:** Northwest 12 to 16 mph gusting to 25 mph.  
**INVERSION:** Developing after 2100 hrs to near 1000 ft. Thermal belt activity likely at the top of the inversion.

**MONDAY:**

**SKY/WEATHER:** Sunny and still warm.  
**MAX TEMPERATURE:** 92 to 98 valleys/mid-slopes. 72 to 78 around 5000 feet.  
**MIN RH:** 12 to 19 percent valleys/mid-slopes. 20 to 30 percent ridges.  
**20 FT WINDS:**  
**Lower Valleys:** West to Northwest 5 to 10 mph gusting 22 mph.  
**Mid-slopes and Ridges:** West to northwest 14 to 18 mph gusting 25 mph.  
**HAINES INDEX:** 3 Low.  
**TRANSPORT WINDS:** WNW 10 to 15 mph.

**Boating concerns Sunday** Up-lake winds are expected through the morning...becoming increasingly northwesterly through the afternoon. This will cause bumpy conditions across the lake in the afternoon. Wave heights to 2 feet have been observed in similar wind conditions.  
**Aviation concerns Sunday:** Temperature near 25C at 4000 feet for load calcs. Thermal turbulence likely due to uneven heating of terrain and slopes in addition to mechanical, wind driven turbulence.

Weather observations can be texted to 509-844-7003 or emailed to [bubba57@comcast.net](mailto:bubba57@comcast.net).

## Fire Behavior Forecast # 33

<b>Name of Incident:</b> <b>Pioneer</b>	<b>Administrative Unit:</b> SE Region DNR / Okanogan-Wenatchee NF
<b>Date &amp; Time Issued:</b> July 13, 2024 @ 1900	<b>Operational Period:</b> <u>DAY</u> 07/14/2024
<b>FBAN:</b> Steve Ziel	<b>Signed:</b> /s/ <i>Steve Ziel</i>

***Deja'Vu forecast (similar as previous day's conditions). Today's hot, dry, and windy afternoon conditions will result in another elevated fire behavior potential day. Rapid fire spread will occur with wind and/or slope alignment. Expect active burning conditions between 1400 to 2000 hours. Live fuels are starting to contribute to fire intensity on mid and lower slopes; fire spread rate is being dominated by fine dead fuels and cured grasses. Lake effect winds (up/ down lake) dominate lower and mid slopes; the fire is on a dry S/SW aspect with steep side drainages that provide strong upslope winds. Wind/slope alignment and/or lake wind will influence and accelerate fire rate of spread and direction.***

**Weather Summary**  
See attached Fire Weather Forecast

**Fire Behavior Summary**

***Fuels in the fire area*** are composed of a mosaic of ***Timber Litter, Grass, Timber with Understory, and Grass/Shrub*** models. The fire is burning in the Rex Creek (2001) fire footprint. Primary tree species include mixed sizes and densities of Douglas Fir and Ponderosa Pine. Local timber litter is compact to fluffy. Brush and understory species include ceanothus, hardwoods, and dog-hair conifer reproduction. **Numerous snags and heavy downed fuel loadings are common throughout all areas.** Live woody and herbaceous fuels are becoming available to contribute to fire intensity, mid slopes and lower. Grasses are partially to fully cured depending on elevation and aspect. Fuel conditions vary by aspect, previous fire history, and elevation. Most N and E aspects include 23-year-old brush and conifer trees with a heavy dead and down component beneath.

***Expect fire behavior to include areas of fingering head fire runs, active flanking, and backing (with rollout) when wind/slope align. In light fuels (grass, pine needle litter) expect rapid fire spread. Heavy fuels are retaining heat serving as ignition sources for surrounding fuels. At higher elevations and north aspects, some grasses are still curing. Very active fire behavior is expected for next several days. Watch out for slope reversal with rapid rates of spread and high intensity burning when it occurs. Expect lee-side spotting as fire reaches ridgelines. Expect group torching with spotting to <.5 mi. where sufficient timber fuels are present.***

***\* FFM= 3%-4%, 1000hr. moisture=10%, Woody fuels 120%, Probability of Ignition—80-90%, Max Spotting 0.5 miles or more with significant column development.***

Fuel Type	Rate of Spread	Flame Length	Backing ROS	Spot Size in 2-hours
...If your work area includes -	(CH/HR = FPM)	Feet	FPM	Acres
GR2 - Moderate load grass/shrub	45 - 50	4 - 5	1-2	250
SH2 – Moderate load shrub	3 - 5	2-3	< 1	3
TU5 - High load Timber w/ Understory	12 - 14	8- 9 (torching)	1	15
TL8 – Long needle timber litter	10-12	4- 6	1 +	10

**Specific Assignments:**

- Div. A** – The fire will continue to back and flank to Fish Creek with wrap around spread toward E. Fk. Fish Cr. Expect finger runs.
- Div. S** – Fire in Prince Cr will continue on both sides upstream to Middle Fk. Prince Cr., and may spread toward Cub Lake.
- Shore Protection Group** – **Monitor up/down lake winds closely.** Monitor activity on lower Meadow Cr.. Expect rapid spread in fine fuels when fire becomes active on the lower slopes between Moore Point and Meadow Cr..
- Other Br./Grp.** – Should not be affected by fire activity during the burn period. Monitor smoke direction and amount. Assess fuels.
- \*IA** – Expect rapid rates of spread in light fuels. Ensure good size-up before engaging and base tactics on current as well as expected fire behavior. Review potential ROS and FL by fuel type.
- Air Operations:** Hot. Locally heavy downwind smoke in drainages and aloft. Complex terrain, watch for lee-side turbulence.

**Safety**

**Our fire will be getting larger for the next couple burn periods, larger fires release more energy; more energy released makes larger fires – this fire will get larger. Large fires get large slowly or quickly (take home message – observe fire behavior to determine your actions).**

**Be alert to changing conditions – don't be lulled into the "same old/same old".....fire behavior and weather processes are dynamic and ever changing throughout the day, week, season...**

*\*Today's Fire Behavior Forecast contains 729 words written for your situational awareness.*



## SAFETY MESSAGE

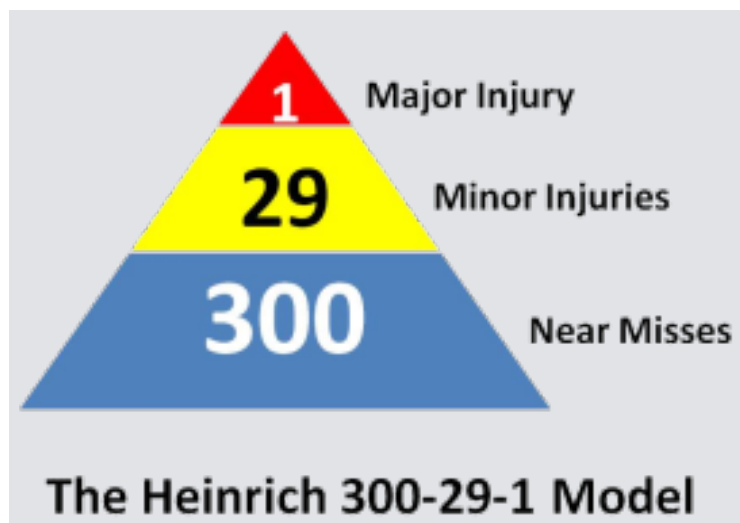
14 July 2024

INCIDENT: Pioneer

OPERATIONAL PERIOD: 0700-2100

### Safety Pyramid

- How many unsafe acts have you seen while fighting fire?
- How many bumps, scrapes, and minor injuries or accidents have you been a part of?
- The Heinrich 300-29-1 Model states that for every 300 unsafe behaviors performed, there are 29 minor accidents and 1 serious accident.



- Key Take Aways:
  - **Little things, when left unaddressed, can become big things!!!** Take time to recognize the “little things” and change a behavior before they become the number at the top of the pyramid!!!!
  - **If you see something say something!!!** It is important to correct unsafe actions or situations early. By focusing on mitigating near misses and minor injuries, organizations can effectively reduce the occurrence of major injuries and fatalities.

SAFETY OFFICERS: Marshall Brown, Taija Corso, Justin Randall (t)

<h1>Risk Assessment Worksheet</h1>	1. Incident Name: <h2 style="text-align: center;">PIONEER FIRE</h2>	2. Location: <h2 style="text-align: center;">WA-SES-000173</h2>
3. Leaders Intent /Specific Objective: Risk Management tools will be used to evaluate tactics in order to provide for firefighter and public safety while implementing actions that have a high probability of success. <b>THIS IS NOT AN EXHAUSTIVE LIST OF RISKS OR CONTROL OPTIONS</b>	4. Prepared By: <h3 style="text-align: center;">Taija Corso/Justin Randall/Marshall Brown</h3>	5. Date Prepared: <h2 style="text-align: center;">Saturday, July 13, 2024</h2>
Signature: <i>Marshall Brown</i>	Title:	

Identify Hazards		Assess Hazards			Risk Control Options	Residual Risk			Decision	Implement
7. Task	8. Hazard	9.. Hazard Probability	10. Severity	11. RAC	12. Identify hazard mitigations & abatement measures (press [alt + enter ] to add a line)	13. Hazard Probability	14. Severity	15. RAC	16. Risk Acceptable?	17. Hazard Control Assigned to:
Operational tasks	Medical Treatment and Transport Delay	Almost Certain	Catastrophic	Extremely High	Staff Medical personnel that is commensurate with the operational assignment. Coordination with the MEDL, BOAT Group and AOBDD is essential. Detailed procedures are in place for medical transportation. If boat and/or air resources are unavailable, medical personnel is unavailable, and Risk Management matrix is unacceptables; consider alternative operational tactics and strategies. Use P.A.C.E. model for transportation planning utilizing the ICS206 medical plan. Identify helispots and possible. LEADERS INTENT: ANY WEATHER PERAMETERS OR OPERATIONAL CHANGES THAT WOULD AFFECT TRANSPORT WILL BE COMMUNICATED TO INCIDENT PERSONNEL FOR OPERATIONAL REASSEMENT.	Possible	Critical	High	YES	All Incident Personnel
Operational tasks	Hit by Hazards	Possible	Catastrophic	Extremely High	Maintain sound risk management processes and modify tactics and strategy to limit personnel exposure in areas that have probability for roll out and falling material.	Possible	Critical	High	YES	All Incident Personnel
Perimeter Control	Increased Fire Behavior	Likely	Critical	Extremely High	With red flag warnings, drying of fuels, wind, and rollout potential anticipate increase in fire behavior and adjust tactics and strategies using the risk management process.	Possible	Critical	High	YES	All Operations Personnel
Ground transportation (Hiking, UTV, Driving)	Motor Vehicle Accident- Struck by/Striking Object/Loss of vehicle control. 820 road system deteriorating from use and difficult to drive.	Possible	Critical	High	Hiking: Pace and situational awareness. UTV: Adhere to Agency UTV Policy Driving: Drive defensively, Chelan July traffic will be busy. Road closures do not have security assigned. Gravel ordered to resurface road. Drive cautiously until road repaired.	Possible	Critical	High	YES	All Incident Personnel
Transportation - Boat	Boat sinking from striking an object or capsizing due to high winds or waves- people drowning. Poker run 7-13-15.	Unlikely	Critical	Moderate	Boat coordinators assigned. Qualified agency and commercial boat captains. PAX safety briefings and pax wear life jackets. Multi pax on board so MOB noticed immediately. Boating plan and float following. Wind speed advisories. Sherrif directs boats to opposite side of lake and participants are cooperative and knowledgeable. Will rendezvous for briefing.	Rare	Moderate	Low		
Helicopter Operations	Aircraft Mishap - General	Unlikely	Catastrophic	High	VALIDATE THAT MISSIONS ARE ESSENTIAL AND MEET INCIDENT OBJECTIVES. TFR IS IN PLACE, IF YOU SEE INTRUSION COMMUNICATE IMMEDIATELY.	Rare	Catastrophic	Moderate	YES	All Operational Personnel
Firing Operations - Ground	Ingress/Egress/Access Entrapment-burnover	Possible	Critical	High	Use resources qualified for complicated firing operations. Prepare firing plans. Sufficient radio capacity for all persons on the firing group and a discrete frequency for firing if needed. Plan and identify contingencies and develop escape plans. <i>Reduce risk by using UAS for ignition.</i>	Unlikely	Critical	Moderate	YES	Alpha/Sierra, Firing Group
Interactions with Public Safety/Public Relations, Forest closure order growth	Personal Injury/Damage to Public Relations, no roads guards.	Possible	Moderate	Moderate	Travel with the expectation of public on roads and trails. Contact Team Law Enforcement, Safety Officers, and Security when necessary. Disengage from any confrontations.	Possible	Moderate	Moderate	YES	All Incident Personnel
Initial Attack	Unknown terrain, cooperators, leadership added to existing fire and ambient conditions. Sense of urgency & confusion.	Likely	Critical	Extremely High	Incident IA resources pre-designated. Briefed at incident and dispatched with incident leadership. IA frequencies programmed into radios.	Possible	Critical	High	YES	All Operations Personnel
All Incident Operational Tasks	Medical - Heat Related Illness/Wildlife	Likely	Moderate	High	Identifying heat related illness early, appropriate pace in extreme temps, shade, fluid intake in appropriate proportions. Discussions/Awareness on wildlife/snakes.	Unlikely	Critical	Moderate	YES	All Personnel

## PIONEER NW TEAM 12 INITIAL ATTACK RESPONSE PLAN

Per the Pioneer Fire Delegation of Authority, NW Team 12 has responsibility for Initial Attack response within the Pioneer Fire TFR. Additionally, the team will support initial attack efforts surrounding the TFR as requested. This includes ground and air resources. Most of the TFR consists of Forest Service and Park Service land with small parcels of private inholdings. Additional land ownership adjacent to the TFR consists of BLM, State, and private land.

### Pioneer Initial Attack Response Plan:

- IA fires reported near or within the TFR will be reported through CWICC.
- Appropriate agency Duty Officer will be informed of the fire. If the fire is within the TFR and suppression actions are necessary, CWICC will contact Field Operations by phone or radio and provide response instructions. The duty officer is responsible for notifying the agency administrator of decision. Order of contact:
  - CWICC will contact Field Ops Aaron Rowe at 509-679-5378 or Field Ops trainee Lonnie Newton at 208-501-4019
  - If neither Field Ops can be reached by phone, call Field Ops on radio. If not reachable on radio, contact Pioneer Communications and have them relay message.
  - If no contact can be established with Field Ops, contact Planning Ops Kurt Ranta at 360-708-5227 or Planning Ops trainee Rob Poyner at 425-512-2621.
- Air Operations and/or Division/Group Supervisor assigned to the division/group nearest the IA location will be notified by Field Operations and respond with assigned resources.
- Local forest or state Initial Attack frequencies will be used and provided in the IAP Communications Plan.
- The same processes will be used for fires outside of TFR if assistance from Pioneer Fire resources is requested.
- Any air resources used on initial attack or support missions other than Pioneer will be on a lend/lease arrangement.
- All resources in Structure/IA Group are available for Initial Attack response. Other divisions/groups may have resources also identified for IA response. Number and type of resources mobilized to a new start will be determined by anticipated or requested need. Resources will be led by overhead at the Strike Team Leader level or above.

### Process as written in 204 comments:

- All resources in Structure/IA Group are available for Initial Attack response per the Pioneer Fire IA Response Plan. Number and type of resources mobilized to a new start will be determined by anticipated or requested need. Resources will be led by overhead at the Strike Team Leader level or above.
  - If Initial Attack occurs within the TFR, Wenatchee Dispatch will coordinate with appropriate duty officer and contact Field Ops for response.
  - Field Operations will contact the Structure/IA Group Supervisor and/or Air Operations to coordinate response to new start.
  - Local forest Initial Attack frequencies will be used and provided in the IAP Communications Plan
  - The same process will be used for fires outside of TFR if assistance from Pioneer fire resources is requested.



## Division/Group Assignment List (ICS 204 WF)

Controlled Unclassified Information//Basic

<b>1. Incident Name:</b>				<b>3.</b>			
PIONEER				<b>Branch:</b>  I/II		<b>Division/Group:</b>  A	
<b>2. Operational Period:</b> 0700-2100							
Date/Time From: 07/14/2024 0700      SUN		Date/Time To: 07/14/2024 2100      SUN					
<b>4. Operations Personnel</b>							
<b>OPERATIONS CHIEF</b>		AARON ROWE, LONNIE NEWTON (T)		<b>BRANCH DIRECTOR</b>		SCOTT EBEL, JESSE BOHNSACK CODY ACORD (T)	
<b>DIVISION/GROUP SUPERVISOR</b>		SHAWN OTTO, CHRIS RAMISKEY (T)		<b>AIR OPS BRANCH DIRECTOR</b>		PAUL BALFOUR	
<b>5. Resources Assigned this Period</b>							
Strike Team / Task Force / Resource Designator		LWD	Leader	Number Persons	Drop Off PT./Time	Pick Up PT./Time	
O-352 SOFC		07/16	KRIS CRODDY	1	LUCERNE/0700	LUCERNE/2100	
O-492 SOFC		07/24	LEA WOFFORD	1	LUCERNE/0700	LUCERNE/2100	
O-516 TFLD		07/26	SHANNON CLARK	1	LUCERNE/0700	LUCERNE/2100	
O-447 TFLD (T)		07/22	EHREN E PHILLIPS	1	LUCERNE/0700	LUCERNE/2100	
A-1.5 SHLR		07/23	BRANDON MCSPARIN	1	LUCERNE/0700	LUCERNE/2100	
A-1.15 HECM		07/23	MAKENZIE HAYMAKER	1			
O-409 HECM		07/22	RUGER BIXLER (T)	1			
C-30 CRW1 ENTIAT IHC		07/19	DAN PICKARD	23	LUCERNE/0700	LUCERNE/2100	
C-36 CRW1 ZIGZAG IHC		07/20	SANDRA SPERRY	25	DP 22, MOORE/0700	DP 22, MOORE/2100	
C-28 CR2I CRD		07/15	TYLER HERDMAN	22	LUCERNE/0700	LUCERNE/2100	
C-50 CR2I GRAYBACK FORESTRY		07/21	GAVIN SAEMAN	20	LUCERNE/0700	LUCERNE/2100	
A-78 UAR3 UR31		07/22	PATRICK CLARK	4	LUCERNE/0700	LUCERNE/2100	
<b>8. Division/Group Communication Summary</b>							
Function	Channel	RX Frequency N/W	RX Tone/NAC	TX Frequency N/W	TX Tone/NAC	Mode	
COMMAND	CMD 8	169.5375	123.0	164.7125	123.0	A	
COMMAND	CMD 9	170.4500	123.0	168.1000	123.0	A	
TACTICAL	TAC 2	168.2000	123.0	168.2000	123.0	A	
AIR TO GROUND	A/G PRI	169.1500	000.0	169.1500	000.0	A	
AIR TO GROUND	A/G SEC	168.4000	000.0	168.4000	000.0	A	
<b>9. Prepared By (Resource Unit Leader)</b>			<b>Approved By (Planning Section Chief)</b>			<b>Date</b>	<b>Time</b>
JENNIFER NORTON			JILL JOHNSON			07/13/2024	2100

## Division/Group Assignment List (ICS 204 WF)

Controlled Unclassified Information//Basic

<b>1. Incident Name:</b>				<b>3.</b>			
PIONEER				<b>Branch:</b>		<b>Division/Group:</b>	
<b>2. Operational Period:</b> 0700-2100				I/II		A	
Date/Time From: 07/14/2024 0700      SUN		Date/Time To: 07/14/2024 2100      SUN					
<b>4. Operations Personnel</b>							
<b>OPERATIONS CHIEF</b>		AARON ROWE, LONNIE NEWTON (T)		<b>BRANCH DIRECTOR</b>		SCOTT EBEL, JESSE BOHNSACK CODY ACORD (T)	
<b>DIVISION/GROUP SUPERVISOR</b>		SHAWN OTTO, CHRIS RAMISKEY (T)		<b>AIR OPS BRANCH DIRECTOR</b>		PAUL BALFOUR	
<b>5. Resources Assigned this Period</b>							
Strike Team / Task Force / Resource Designator		LWD	Leader	Number Persons	Drop Off PT./Time	Pick Up PT./Time	
O-359 MEDIC 12		07/16	ETHAN BIEDERMAN	1	LUCERNE/0700	LUCERNE/2100	
O-310 EMT5		07/20	DAVID REPNIK	1	LUCERNE/0700	LUCERNE/2100	
O-533 MEDIC 1		07/25	CHRISTOPHER JACKSON	1	LUCERNE/0700	LUCERNE/2100	
E-84 VUTV KIRCHER AND SHERMAN					LUCERNE/0700	LUCERNE/2100	
E-85 VUTV KIRCHER AND SHERMAN					LUCERNE/0700	LUCERNE/2100	
<b>6. Control Operations/Work Assignments:</b>							
<p><b>TASK:</b> Implement point protection on private and federal infrastructure. Utilize multiple suppression tactics to limit fire spread north and west of Fish Creek where terrain and fuels allow for highest probability of success. Monitor fire progression north and west as fire progresses across Round Mtn.</p> <p><b>PURPOSE:</b> to slow fire progression, minimize fire intensity around critical values, provide time for suppression tactic, and prevent fire spread towards Stehekin.</p> <p><b>END STATE:</b> fire impacts to critical values, including private in holdings, federal infrastructure and Stehekin.</p>							
<b>7. Special Instructions:</b>							
<p>-In large or long term spike camps use helicopters, boats, or pack stock to deliver portable backcountry latrines and remove human waste if necessary. If camp does not have adequate pack, boat, or air support for human waste management, establish community latrines well away from water sources and common areas. Use human waste bags, if necessary.</p> <p>-Minimize ground disturbance on the Moore Point and Meadow Creek alluvial fans in order to protect sensitive resources.</p> <p>-Hose used from Prince Creek to Moore Pt: contaminated with invasive plants. Do not reuse. Backhaul to Moore Pt DP22 and store in "infested hose" area at Moore Pt until decontaminated.</p> <p>-Ensure hazard mitigations and IWI protocols are in place before taking action.</p> <p>-** Denotes available for Initial Attack</p>							
<b>8. Division/Group Communication Summary</b>							
Function	Channel	RX Frequency N/W	RX Tone/NAC	TX Frequency N/W	TX Tone/NAC	Mode	
COMMAND	CMD 8	169.5375	123.0	164.7125	123.0	A	
COMMAND	CMD 9	170.4500	123.0	168.1000	123.0	A	
TACTICAL	TAC 2	168.2000	123.0	168.2000	123.0	A	
AIR TO GROUND	A/G PRI	169.1500	000.0	169.1500	000.0	A	
AIR TO GROUND	A/G SEC	168.4000	000.0	168.4000	000.0	A	
<b>9. Prepared By (Resource Unit Leader)</b>			<b>Approved By (Planning Section Chief)</b>			<b>Date</b>	<b>Time</b>
JENNIFER NORTON			JILL JOHNSON			07/13/2024	2100

## Division/Group Assignment List (ICS 204 WF)

Controlled Unclassified Information//Basic

<b>1. Incident Name:</b>				<b>3.</b>			
PIONEER				<b>Branch:</b>  I/II		<b>Division/Group:</b>  D	
<b>2. Operational Period:</b> 0700-2100							
Date/Time From: 07/14/2024 0700      SUN		Date/Time To: 07/14/2024 2100      SUN					
<b>4. Operations Personnel</b>							
<b>OPERATIONS CHIEF</b>		AARON ROWE, LONNIE NEWTON (T)		<b>BRANCH DIRECTOR</b>		SCOTT EBEL, JESSE BOHNSACK CODY ACORD (T)	
<b>DIVISION/GROUP SUPERVISOR</b>		BRETT JOHNSON, PAUL KIMBALL (T)		<b>AIR OPS BRANCH DIRECTOR</b>		PAUL BALFOUR	
<b>5. Resources Assigned this Period</b>							
Strike Team / Task Force / Resource Designator		LWD	Leader	Number Persons	Drop Off PT./Time	Pick Up PT./Time	
O-353 SOFC		07/17	PHILLIP BORDELON	1	STEHEKIN/0700	STEHEKIN/0700	
O-423 TFLD		07/16	BRYCE HAVERKAMP	1	STEHEKIN/0700	STEHEKIN/0700	
O-556 TFLD		07/27	JORDAN SIMMONDS	1	STEHEKIN/0700	STEHEKIN/0700	
O-448 TFLD (T)		07/22	ANDY MENDIGUREN	1	STEHEKIN/0700	STEHEKIN/0700	
O-440 HECM		07/25	ADAM HEBERLIE	1	STEHEKIN/0700	STEHEKIN/0700	
O-477 HECM		07/24	JOSEPH KUHLMANN	1	STEHEKIN/0700	STEHEKIN/0700	
O-388 SMOD BANDELIER		07/22	JOSH O'COY	8	STEHEKIN/0700	STEHEKIN/0700	
**O-377 WFM1 WHISKEYTOWN		07/21	WARREN SWAB	8	STEHEKIN/0700	STEHEKIN/0700	
O-402 WFM2 YOSEMITE		07/21	JOHN O'COY	8	STEHEKIN/0700	STEHEKIN/0700	
O-372 LEAD READ		07/19	JACK OELFKE	1	STEHEKIN/0700	STEHEKIN/0700	
O-523 ARCH		07/25	THEO SHAHEEN- MCCONNELL	1	STEHEKIN/0700	STEHEKIN/0700	
O-370 ARCH (T)		07/18	HENRY EATON	1	STEHEKIN/0700	STEHEKIN/0700	
O-376 REAF		07/18	ROGER CHRISTOPHERSEN	1	STEHEKIN/0700	STEHEKIN/0700	
O-371 REAF (T)		07/20	HEATHER RICKLEFF	1	STEHEKIN/0700	STEHEKIN/0700	
E-89 DRIVER BIG STATE WILDFIRE		07/27	BENJERMIN RIGGS	1	STEHEKIN/0700	STEHEKIN/0700	
E-107 VUTV JB CONTRACTORS					STEHEKIN/0700	STEHEKIN/0700	
<b>8. Division/Group Communication Summary</b>							
Function	Channel	RX Frequency N/W	RX Tone/NAC	TX Frequency N/W	TX Tone/NAC	Mode	
COMMAND	CMD 8	169.5375	123.0	164.7125	123.0	A	
COMMAND	CMD 9	170.4500	123.0	168.1000	123.0	A	
TACTICAL	TAC 1	168.0500	123.0	168.0500	123.0	A	
AIR TO GROUND	A/G PRI	169.1500	000.0	169.1500	000.0	A	
AIR TO GROUND	A/G SEC	168.4000	000.0	168.4000	000.0	A	
<b>9. Prepared By (Resource Unit Leader)</b>							
JENNIFER NORTON			Approved By (Planning Section Chief)			Date	Time
			JILL JOHNSON			07/13/2024	2100

**Division/Group Assignment List (ICS 204 WF)**  
 Controlled Unclassified Information//Basic

1. Incident Name:				3.			
PIONEER				Branch:		Division/Group:	
2. Operational Period: 0700-2100				I/II		D	
Date/Time From: 07/14/2024 0700      SUN		Date/Time To: 07/14/2024 2100      SUN					
4. Operations Personnel							
<b>OPERATIONS CHIEF</b>		AARON ROWE, LONNIE NEWTON (T)		<b>BRANCH DIRECTOR</b>		SCOTT EBEL, JESSE BOHNSACK CODY ACORD (T)	
<b>DIVISION/GROUP SUPERVISOR</b>		BRETT JOHNSON, PAUL KIMBALL (T)		<b>AIR OPS BRANCH DIRECTOR</b>		PAUL BALFOUR	
5. Resources Assigned this Period							
Strike Team / Task Force / Resource Designator	LWD	Leader	Number Persons	Drop Off PT./Time	Pick Up PT./Time		
E-125 VUTV JB CONTRACTORS				STEHEKIN/0700	STEHEKIN/0700		
E-126 VUTV JB CONTRACTORS				STEHEKIN/0700	STEHEKIN/0700		
E-139 VUTV JB CONTRACTORS				STEHEKIN/0700	STEHEKIN/0700		
E-140 VUTV OUTBACK FIREFIGHTING				STEHEKIN/0700	STEHEKIN/0700		
E-141 VUTV OUTBACK FIREFIGHTING				STEHEKIN/0700	STEHEKIN/0700		
E-142 VUTV OUTBACK FIREFIGHTING				STEHEKIN/0700	STEHEKIN/0700		
6. Control Operations/Work Assignments:							
<b>TASK:</b> Continue improving fireline and structure prep in and around Stehekin. <b>PURPOSE:</b> To protect the community of Stehekin, surrounding infrastructure and historic values from fire impacts. <b>END STATE:</b> Fire impacts to critical values in and around Stehekin have been minimized.							
8. Division/Group Communication Summary							
Function	Channel	RX Frequency N/W	RX Tone/NAC	TX Frequency N/W	TX Tone/NAC	Mode	
COMMAND	CMD 8	169.5375	123.0	164.7125	123.0	A	
COMMAND	CMD 9	170.4500	123.0	168.1000	123.0	A	
TACTICAL	TAC 1	168.0500	123.0	168.0500	123.0	A	
AIR TO GROUND	A/G PRI	169.1500	000.0	169.1500	000.0	A	
AIR TO GROUND	A/G SEC	168.4000	000.0	168.4000	000.0	A	
9. Prepared By (Resource Unit Leader)			Approved By (Planning Section Chief)			Date	Time
JENNIFER NORTON			JILL JOHNSON			07/13/2024	2100

## Division/Group Assignment List (ICS 204 WF)

Controlled Unclassified Information//Basic

<b>1. Incident Name:</b>				<b>3.</b>			
PIONEER				<b>Branch:</b>  I/II		<b>Division/Group:</b>  D	
<b>2. Operational Period:</b> 0700-2100							
Date/Time From: 07/14/2024 0700		Date/Time To: 07/14/2024 2100					
SUN		SUN					
<b>4. Operations Personnel</b>							
<b>OPERATIONS CHIEF</b>		AARON ROWE, LONNIE NEWTON (T)		<b>BRANCH DIRECTOR</b>		SCOTT EBEL, JESSE BOHNSACK CODY ACORD (T)	
<b>DIVISION/GROUP SUPERVISOR</b>		BRETT JOHNSON, PAUL KIMBALL (T)		<b>AIR OPS BRANCH DIRECTOR</b>		PAUL BALFOUR	
<b>7. Special Instructions:</b>							
<p>-All operational personnel working on USFS lands will need to conduct a thorough inspection for invasive species seeds on boots including laces, clothing, and gear prior to entering NPS lands.</p> <p>-Only fresh (direct from the cache) hose should be utilized on NPS lands to prevent the transport of invasive species seeds.</p> <p>-Hose used on USFS lands should not be used on NPS lands and hose used on NPS lands should not be used on USFS lands to prevent the spread of invasives species seeds.</p> <p>-Cargo loads being transported onto NPS lands should be inspected for invasive weed seed prior to flight.</p> <p>-NPS Resource Avoidance Area Flagging is yellow with red polka dots. Contact NPS READs before working in areas where this flagging is present.</p> <p>-Ensure hazard mitigations and IWI protocols are in place before taking action.</p> <p>-** Denotes available for Initial Attack</p> <p>-Designated Resources are available for Initial Attack response per the Pioneer Fire IA Response Plan. Number and type of resources mobilized to a new start will be determined by anticipated or requested need. Resources will be led by overhead at the Strike Team Leader level or above.</p> <p>-If Initial Attack occurs within the TFR, Wenatchee Dispatch will coordinate with appropriate duty officer and contact Field Ops for response.</p> <ul style="list-style-type: none"> <li>Field Operations will contact the Structure/IA Group Supervisor and/or Air Operations to coordinate response to new start.</li> <li>Local forest Initial Attack frequencies will be used and provided in the IAP Communications Plan</li> <li>The same process will be used for fires outside of TFR if assistance from Pioneer fire resources is requested.</li> </ul>							
<b>8. Division/Group Communication Summary</b>							
Function	Channel	RX Frequency N/W	RX Tone/NAC	TX Frequency N/W	TX Tone/NAC	Mode	
COMMAND	CMD 8	169.5375	123.0	164.7125	123.0	A	
COMMAND	CMD 9	170.4500	123.0	168.1000	123.0	A	
TACTICAL	TAC 1	168.0500	123.0	168.0500	123.0	A	
AIR TO GROUND	A/G PRI	169.1500	000.0	169.1500	000.0	A	
AIR TO GROUND	A/G SEC	168.4000	000.0	168.4000	000.0	A	
<b>9. Prepared By (Resource Unit Leader)</b>			<b>Approved By (Planning Section Chief)</b>			<b>Date</b>	<b>Time</b>
JENNIFER NORTON			JILL JOHNSON			07/13/2024	2100

## Division/Group Assignment List (ICS 204 WF)

Controlled Unclassified Information//Basic

<b>1. Incident Name:</b>				<b>3.</b>		
PIONEER				<b>IV</b>	<b>Division/Group:</b>	
<b>2. Operational Period:</b> 0700-2100					<b>S</b>	
Date/Time From: 07/14/2024 0700      SUN		Date/Time To: 07/14/2024 2100      SUN				
<b>4. Operations Personnel</b>						
<b>OPERATIONS CHIEF</b>		AARON ROWE, LONNIE NEWTON (T)		<b>BRANCH DIRECTOR</b>		TIM BARNETT
<b>DIVISION/GROUP SUPERVISOR</b>		MATT KENNEDY, JULIUS JACOBSEN (T)		<b>AIR OPS BRANCH DIRECTOR</b>		PAUL BALFOUR
<b>5. Resources Assigned this Period</b>						
Strike Team / Task Force / Resource Designator		LWD	Leader	Number Persons	Drop Off PT./Time	Pick Up PT./Time
O-425 TFLD		07/23	JON WILLOUGHBY	1	ICP/0700	ICP/2100
O-249 TFLD (T)		07/16	MARK HARPER	1	ICP/0700	ICP/2100
**O-470 HEQB		07/23	AUSTIN NOBLES	1	CAMP 4 SPIKE/0700	CAMP 4 SPIKE/2100
C-31 CRW1 LA GRANDE IHC		07/19	JUAN JESUS ELGUEZABAL	23		
C-35 CRW1 UNION IHC		07/20	ERIC JORGENSON	22	H40/0700	H40/2100
E-192 ENG5 E4406 - WADNR - SES		07/15	SETH REYNOLDS	4	ICP/0700	ICP/2100
E-193 ENG5 E4501 - WADNR - SES		07/15	CONNOR RUPERT	4	ICP/0700	ICP/2100
**E-280 ENG6 RAINSTORM		07/23	GARRETT RAINS	3	ICP/0700	ICP/2100
E-309 ENG4 LATE SUMMERS WILDFIRE		07/23	NOLAN ETTENHOFER	3	ICP/0700	ICP/2100
E-73 WTS1 STRAND TENDERS		07/22	GARRETT STRAND	1	CAMP 4 SPIKE/0700	CAMP 4 SPIKE/2100
E-78 WTS2 KING HYDROSEEDING		07/23	BILL BLACK	1	CAMP 4 SPIKE/0700	CAMP 4 SPIKE/2100
E-174 WTS2		07/19	KEITH HIATT	1	ICP/0700	ICP/2100
**E-92 DZR3 BATCHELOR EXCAVATION		07/23	JAY BATCHELOR	2	ICP/0700	ICP/2100
<b>8. Division/Group Communication Summary</b>						
Function	Channel	RX Frequency N/W	RX Tone/NAC	TX Frequency N/W	TX Tone/NAC	Mode
COMMAND	CMD 7	168.4750	123.0	165.4000	123.0	A
COMMAND	CMD 10	170.0125	123.0	165.2500	123.0	A
COMMAND	CMD 11	170.4125	123.0	165.9625	123.0	A
COMMAND	CMD 12	170.6875	123.0	166.5750	123.0	A
TACTICAL	TAC 1	168.0500	123.0	168.0500	123.0	A
AIR TO GROUND	A/G PRI	169.1500	000.0	169.1500	000.0	A
AIR TO GROUND	A/G SEC	168.4000	000.0	168.4000	000.0	A
<b>9. Prepared By (Resource Unit Leader)</b>			<b>Approved By (Planning Section Chief)</b>		<b>Date</b>	<b>Time</b>
JENNIFER NORTON			JILL JOHNSON		07/13/2024	2100

**Division/Group Assignment List (ICS 204 WF)**  
**Controlled Unclassified Information//Basic**

<b>1. Incident Name:</b>				<b>3.</b>		
PIONEER				Branch:  IV	Division/Group:  S	
<b>2. Operational Period:</b> 0700-2100						
Date/Time From: 07/14/2024 0700 SUN		Date/Time To: 07/14/2024 2100 SUN				
<b>4. Operations Personnel</b>						
<b>OPERATIONS CHIEF</b>		AARON ROWE, LONNIE NEWTON (T)		<b>BRANCH DIRECTOR</b>		TIM BARNETT
<b>DIVISION/GROUP SUPERVISOR</b>		MATT KENNEDY, JULIUS JACOBSEN (T)		<b>AIR OPS BRANCH DIRECTOR</b>		PAUL BALFOUR
<b>5. Resources Assigned this Period</b>						
Strike Team / Task Force / Resource Designator	LWD	Leader	Number Persons	Drop Off PT./Time	Pick Up PT./Time	
O-485 FOBS	07/22	KELLY LEWIS	1	JR POINT/0700	JR POINT/2100	
O-488 FOBS (T)	07/23	LEE VENNING	1	JR POINT/0700	JR POINT/2100	
E-18 VUTV CM BACKCOUNTRY						
E-93 VUTV KWIK RESPONSE SUPPORT						
E-149 VUTV TOP GUN RES POLARIS						
O-43 REMS 1	07/23	RICK BOSTAIN	4	CAMP 4 SPIKE/0700	CAMP 4 SPIKE/2100	
O-449 RAT 1	07/22	CLAIRE GARRETT	2	ICP/0700	CAMP 4 SPIKE/2100	
O-358 MEDIC 11	07/16	SAVANAH MCLAUGHLIN	1	CAMP 4 SPIKE/0700	CAMP 4 SPIKE/2100	
O-416 MEDIC 15	07/21	ROBERT RUSZALA	1	CAMP 4 SPIKE/0700	CAMP 4 SPIKE/2100	
E-260 AMBO-3	07/22	KYLE KEMERER	2	ICP/0700	ICP/2100	
<b>6. Control Operations/Work Assignments:</b>						
<p><b>TASK:</b> Continue handline construction and prep from DP-51 to Lake Chelan. Remain prepared for firing operations on Nelson Butte line.</p> <p><b>PURPOSE:</b> To protect values downlake by establishing a barrier to fire spread.</p> <p><b>END STATE:</b> Control line anchored from H-40 to Lake Chelan, and from DP-51 to Lake Chelan.</p>						
<b>8. Division/Group Communication Summary</b>						
Function	Channel	RX Frequency N/W	RX Tone/NAC	TX Frequency N/W	TX Tone/NAC	Mode
COMMAND	CMD 7	168.4750	123.0	165.4000	123.0	A
COMMAND	CMD 10	170.0125	123.0	165.2500	123.0	A
COMMAND	CMD 11	170.4125	123.0	165.9625	123.0	A
COMMAND	CMD 12	170.6875	123.0	166.5750	123.0	A
TACTICAL	TAC 1	168.0500	123.0	168.0500	123.0	A
AIR TO GROUND	A/G PRI	169.1500	000.0	169.1500	000.0	A
AIR TO GROUND	A/G SEC	168.4000	000.0	168.4000	000.0	A
<b>9. Prepared By (Resource Unit Leader)</b>			<b>Approved By (Planning Section Chief)</b>		<b>Date</b>	<b>Time</b>
JENNIFER NORTON			JILL JOHNSON		07/13/2024	2100

## Division/Group Assignment List (ICS 204 WF)

Controlled Unclassified Information//Basic

<b>1. Incident Name:</b>		<b>3.</b>	
PIONEER		<b>Branch:</b>  IV	<b>Division/Group:</b>  S
<b>2. Operational Period:</b> 0700-2100			
Date/Time From: 07/14/2024 0700      SUN	Date/Time To: 07/14/2024 2100      SUN		
<b>4. Operations Personnel</b>			
<b>OPERATIONS CHIEF</b>	AARON ROWE, LONNIE NEWTON (T)	<b>BRANCH DIRECTOR</b>	TIM BARNETT
<b>DIVISION/GROUP SUPERVISOR</b>	MATT KENNEDY, JULIUS JACOBSEN (T)	<b>AIR OPS BRANCH DIRECTOR</b>	PAUL BALFOUR

**7. Special Instructions:**

-Ensure hazard mitigations and IWI protocols are in place before taking action.  
 -\*\* Denotes available for Initial Attack  
 -Designated resources are available for Initial Attack response per the Pioneer Fire IA Response Plan. Number and type of resources mobilized to a new start will be determined by anticipated or requested need. Resources will be led by overhead at the Strike Team Leader level or above.  
 -If Initial Attack occurs within the TFR, Wenatchee Dispatch will coordinate with appropriate duty officer and contact Field Ops for response.

- Field Operations will contact the Structure/IA Group Supervisor and/or Air Operations to coordinate response to new start.
- Local forest Initial Attack frequencies will be used and provided in the IAP Communications Plan.
- The same process will be used for fires outside of TFR if assistance from Pioneer fire resources is requested.

**8. Division/Group Communication Summary**

Function	Channel	RX Frequency N/W	RX Tone/NAC	TX Frequency N/W	TX Tone/NAC	Mode
COMMAND	CMD 7	168.4750	123.0	165.4000	123.0	A
COMMAND	CMD 10	170.0125	123.0	165.2500	123.0	A
COMMAND	CMD 11	170.4125	123.0	165.9625	123.0	A
COMMAND	CMD 12	170.6875	123.0	166.5750	123.0	A
TACTICAL	TAC 1	168.0500	123.0	168.0500	123.0	A
AIR TO GROUND	A/G PRI	169.1500	000.0	169.1500	000.0	A
AIR TO GROUND	A/G SEC	168.4000	000.0	168.4000	000.0	A

<b>9. Prepared By (Resource Unit Leader)</b>	<b>Approved By (Planning Section Chief)</b>	<b>Date</b>	<b>Time</b>
JENNIFER NORTON	JILL JOHNSON	07/13/2024	2100



**Division/Group Assignment List (ICS 204 WF)**  
**Controlled Unclassified Information//Basic**

<b>1. Incident Name:</b>				<b>3.</b>		
PIONEER				Branch:  IV	Division/Group:  CONTINGENCY	
<b>2. Operational Period:</b> 0700-2100						
Date/Time From: 07/14/2024 0700 SUN		Date/Time To: 07/14/2024 2100 SUN				
<b>4. Operations Personnel</b>						
<b>OPERATIONS CHIEF</b>		AARON ROWE, LONNIE NEWTON (T)		<b>BRANCH DIRECTOR</b>		TIM BARNETT
<b>DIVISION/GROUP SUPERVISOR</b>		HEIDI SPRENGER, ROY BOOTS (T)		<b>AIR OPS BRANCH DIRECTOR</b>		PAUL BALFOUR
<b>5. Resources Assigned this Period</b>						
Strike Team / Task Force / Resource Designator	LWD	Leader	Number Persons	Drop Off PT./Time	Pick Up PT./Time	
O-455 SOF2	07/22	PAUL BRNA	1	ICP/0700	ICP/2100	
O-400 TFLD BENJAMIN EDDINGS	07/21		1			
E-269 DZR3	07/22	JEFFERY ROBERT	2	ICP/0700	ICP/2100	
C-34 CR2I WALLOWA	07/20	KIRA SANTULLI	20	ICP/0700	ICP/2100	
C-43 CR2I DIAMOND FIRE 11B	07/22	LARRY ECKELMAN	20	ICP/0700	ICP/2100	
O-426 TFLD	07/22	MITCHELL STILES	1	ICP/0700	ICP/2100	
O-333 HEQB	07/15	JED NEUMEIER	1	ICP/0700	ICP/2100	
C-33 CR2I NORTH PACIFIC	07/20	JOSE PEREZ	20	ICP/0700	ICP/2100	
E-310 ENG6 BAILEY ENTERPRISES	07/24	CLIVE BAILEY	3	ICP/0700	ICP/2100	
E-324 ENG6 METHOW RIVER WILD FIRE	07/25	JOHN NEUNEKER	3	ICP/0700	ICP/2100	
E-237 DZR2 HAYWIRE SERVICES	07/21	KEVIN HANSON	2	ICP/0700	ICP/2100	
E-205 DZR3 DOUGLAS LOGGING	07/26	STEVE DOUGLAS	1	ICP/0700	ICP/2100	
E-105 MBM2 JUSTIN PITTS TRUCKING	07/20	TONY PAUL	2	ICP/0700	ICP/2100	
E-102 SKG2 DUKES EQUIPMENT	07/26	CORY JOHNSON	2	ICP/0700	ICP/2100	
O-468 TFLD	07/23	JENNY ALEXANDER	1	ICP/0700	ICP/2100	
<b>8. Division/Group Communication Summary</b>						
Function	Channel	RX Frequency N/W	RX Tone/NAC	TX Frequency N/W	TX Tone/NAC	Mode
COMMAND	CMD 7	168.4750	123.0	165.4000	123.0	A
COMMAND	CMD 8	169.5375	123.0	164.7125	123.0	A
COMMAND	CMD 10	170.0125	123.0	165.2500	123.0	A
COMMAND	CMD 11	170.4125	123.0	165.9625	123.0	A
TACTICAL	TAC 2	168.2000	123.0	168.2000	123.0	A
AIR TO GROUND	A/G PRI	169.1500	000.0	169.1500	000.0	A
AIR TO GROUND	A/G SEC	168.4000	000.0	168.4000	000.0	A
<b>9. Prepared By (Resource Unit Leader)</b>		<b>Approved By (Planning Section Chief)</b>			<b>Date</b>	<b>Time</b>
CHRIS VOLK		JILL JOHNSON			07/13/2024	2100

**Division/Group Assignment List (ICS 204 WF)**  
**Controlled Unclassified Information//Basic**

<b>1. Incident Name:</b>				<b>3.</b>		
PIONEER				Branch:  IV	Division/Group:  CONTINGENCY	
<b>2. Operational Period: 0700-2100</b>						
Date/Time From: 07/14/2024 0700      SUN		Date/Time To: 07/14/2024 2100      SUN				
<b>4. Operations Personnel</b>						
<b>OPERATIONS CHIEF</b>		AARON ROWE, LONNIE NEWTON (T)		<b>BRANCH DIRECTOR</b>		TIM BARNETT
<b>DIVISION/GROUP SUPERVISOR</b>		HEIDI SPRENGER, ROY BOOTS (T)		<b>AIR OPS BRANCH DIRECTOR</b>		PAUL BALFOUR
<b>5. Resources Assigned this Period</b>						
Strike Team / Task Force / Resource Designator	LWD	Leader	Number Persons	Drop Off PT./Time	Pick Up PT./Time	
O-518 TFLD (T)	07/24	AUSTIN R MCDONALD	1	ICP/0700	ICP/2100	
O-430 HEQB	07/21	TYLER F KUIKEN	1	ICP/0700	ICP/2100	
O-540 HEQB (T)	07/24	BENJAMIN BOUCHER	1	ICP/0700	ICP/2100	
E-272 FEL1 HAVILLAH LOGGING CO.	07/22	TOM KERSHNER	2	ICP/0700	ICP/2100	
E-273 FEL1 SILVER NICKLE LOGGING	07/22	RUDY RODRIGUEZ	2	ICP/0700	ICP/2100	
E-240 FEL2 AXSUS	07/21	PAUL MCNITT	2	ICP/0700	ICP/2100	
E-241 FEL2 LOST CREEK LOGGING	07/21	DUSTIN CHANTRY	2	ICP/0700	ICP/2100	
E-318 LOGL SILVER NICKEL LOGGING	07/25	BART SILVERTHORN	2	ICP/0700	ICP/2100	
E-319 LOGL SILVER NICKEL LOGGING	07/25	BRENDEN LATIMER	1	ICP/0700	ICP/2100	
E-320 LOGT SILVER NICKEL LOGGING	07/25	JASON AYERS	1	ICP/0700	ICP/2100	
E-321 LOGT SILVER NICKEL LOGGING	07/25	CHAD HOCKETT	1	ICP/0700	ICP/2100	
E-322 LOGT SILVER NICKEL LOGGING	07/25	RON MCGINNEY	1	ICP/0700	ICP/2100	
E-323 LOGT SILVER NICKEL LOGGING	07/25	DERICK RAIDAN	1	ICP/0700	ICP/2100	
E-316 DUMP BCD CONTRACTING	07/25	ALEXANDER STARK	1	ICP/0700	ICP/2100	
E-317 DUMP WILLS TRUCKING AND EXEC-	07/25	WILL KRICHBAUM	1	ICP/0700	ICP/2100	
E-270 DZR1 SILVER NICKEL LOGGING	07/23	DONNIE COMBS	2	ICP/0700	ICP/2100	
E-236 DZR2 TOP RAIL	07/21	DAIN LUKEHART	2	ICP/0700	ICP/2100	
<b>8. Division/Group Communication Summary</b>						
Function	Channel	RX Frequency N/W	RX Tone/NAC	TX Frequency N/W	TX Tone/NAC	Mode
COMMAND	CMD 7	168.4750	123.0	165.4000	123.0	A
COMMAND	CMD 8	169.5375	123.0	164.7125	123.0	A
COMMAND	CMD 10	170.0125	123.0	165.2500	123.0	A
COMMAND	CMD 11	170.4125	123.0	165.9625	123.0	A
TACTICAL	TAC 2	168.2000	123.0	168.2000	123.0	A
AIR TO GROUND	A/G PRI	169.1500	000.0	169.1500	000.0	A
AIR TO GROUND	A/G SEC	168.4000	000.0	168.4000	000.0	A
<b>9. Prepared By (Resource Unit Leader)</b>			<b>Approved By (Planning Section Chief)</b>		<b>Date</b>	<b>Time</b>
CHRIS VOLK			JILL JOHNSON		07/13/2024	2100

# Division/Group Assignment List (ICS 204 WF)

Controlled Unclassified Information//Basic

<b>1. Incident Name:</b>				<b>3.</b>		
PIONEER				<b>IV</b>	<b>Division/Group:</b>	
<b>2. Operational Period:</b> 0700-2100					<b>CONTINGENCY</b>	
Date/Time From: 07/14/2024 0700      SUN		Date/Time To: 07/14/2024 2100      SUN				
<b>4. Operations Personnel</b>						
<b>OPERATIONS CHIEF</b>		AARON ROWE, LONNIE NEWTON (T)		<b>BRANCH DIRECTOR</b>		TIM BARNETT
<b>DIVISION/GROUP SUPERVISOR</b>		HEIDI SPRENGER, ROY BOOTS (T)		<b>AIR OPS BRANCH DIRECTOR</b>		PAUL BALFOUR
<b>5. Resources Assigned this Period</b>						
Strike Team / Task Force / Resource Designator		LWD	Leader	Number Persons	Drop Off PT./Time	Pick Up PT./Time
E-271 DZR2 DUKES EQUIPMENT		07/22	TYSON HAUBER	2	ICP/0700	ICP/2100
E-268 DZR3 REMSBERG LOGGING		07/21	CHRIS JACK	2	ICP/0700	ICP/2100
E-238 MBM2 WILDFIRE		07/21	MIKE JOHNSON	2	ICP/0700	ICP/2100
E-208 SKG2 NW DIESEL DUDES		07/25	ROBERT LUNYOU	2	ICP/0700	ICP/2100
E-278 SKG2 DUKES EQUIPMENT		07/22	MATT SVEEN	2	ICP/0700	ICP/2100
E-274 SKD1 SILVER-NICKEL LOGGING		07/23	WYATT PERSHING	1	ICP/0700	ICP/2100
E-275 SKD1 SILVER-NICKEL LOGGING		07/23	KODY AYERS	1	ICP/0700	ICP/2100
**O-457 TFLD		07/21	JEFFERY DICKINSON	1	ICP/0700	ICP/2100
O-431 HEQB		07/21	DAN POOLE	1	ICP/0700	ICP/2100
O-445 HEQB (T)		07/21	KELSIE P RANTZOW	1	ICP/0700	ICP/2100
O-344 FELB		07/15	JACOB HARVEY	1	ICP/0700	ICP/2100
O-433 FMOD BROTHERS FIRE		07/24	JUSTIN OFFREDI	2	ICP/0700	ICP/2100
O-434 FMOD DELUNA ENTERPRISES		07/21	JOHN DELUNA	2	ICP/0700	ICP/2100
**C-32 CR2I PATRICK		07/19	GARTH CHAMBERS	20	ICP/0700	ICP/2100
**E-279 ENG6 LATE SUMMERS		07/22	JENSEN BOVEE	3	ICP/0700	ICP/2100
**E-235 ENG6 PIKE		07/22	ANDREW L DUZET	4	ICP/0700	ICP/2100
<b>8. Division/Group Communication Summary</b>						
Function	Channel	RX Frequency N/W	RX Tone/NAC	TX Frequency N/W	TX Tone/NAC	Mode
COMMAND	CMD 7	168.4750	123.0	165.4000	123.0	A
COMMAND	CMD 8	169.5375	123.0	164.7125	123.0	A
COMMAND	CMD 10	170.0125	123.0	165.2500	123.0	A
COMMAND	CMD 11	170.4125	123.0	165.9625	123.0	A
TACTICAL	TAC 2	168.2000	123.0	168.2000	123.0	A
AIR TO GROUND	A/G PRI	169.1500	000.0	169.1500	000.0	A
AIR TO GROUND	A/G SEC	168.4000	000.0	168.4000	000.0	A
<b>9. Prepared By (Resource Unit Leader)</b>			<b>Approved By (Planning Section Chief)</b>		<b>Date</b>	<b>Time</b>
CHRIS VOLK			JILL JOHNSON		07/13/2024	2100

**Division/Group Assignment List (ICS 204 WF)**  
**Controlled Unclassified Information//Basic**

<b>1. Incident Name:</b>				<b>3.</b>		
PIONEER				Branch:  IV	Division/Group:  CONTINGENCY	
<b>2. Operational Period: 0700-2100</b>						
Date/Time From: 07/14/2024 0700      SUN		Date/Time To: 07/14/2024 2100      SUN				
<b>4. Operations Personnel</b>						
<b>OPERATIONS CHIEF</b>		AARON ROWE, LONNIE NEWTON (T)		<b>BRANCH DIRECTOR</b>		TIM BARNETT
<b>DIVISION/GROUP SUPERVISOR</b>		HEIDI SPRENGER, ROY BOOTS (T)		<b>AIR OPS BRANCH DIRECTOR</b>		PAUL BALFOUR
<b>5. Resources Assigned this Period</b>						
Strike Team / Task Force / Resource Designator	LWD	Leader	Number Persons	Drop Off PT./Time	Pick Up PT./Time	
E-151 MBM2 DUKES EQUIPMENT	07/23	CHRIS BOYLES	2	ICP/0700	ICP/2100	
E-152 MBM2 AXSUS	07/26	ADAM HEDLUND	2	ICP/0700	ICP/2100	
E-154 SKG2 WESTERN	07/21	RICK LAUMAN	2	ICP/0700	ICP/2100	
E-155 SKG2 MOUNTAIN VIEW	07/27	STEVE FIFE	2	ICP/0700	ICP/2100	
E-242 EXC2 DELANGE ENTERPRISES	07/21	PETE DELANGE	2	ICP/0700	ICP/2100	
O-383 MEDIC 13	07/18	TONY BYLSKI	1	ICP/0700	ICP/2100	
O-464 REMS 3	07/22	RON PEARSALL	4	ICP/0700	ICP/2100	
O-534 MEDIC 7	07/25	JOSHUA GRAY	1	ICP/0700	ICP/2100	
E-194 AMBO-2	07/15	ANNA REYNOLDS	2	ICP/0700	ICP/2100	
E-19 VUTV BACKCOUNTRY RENTALS				ICP/0700	ICP/2100	
E-44 VATV KIRCHER SHERMAN				ICP/0700	ICP/2100	
E-108 VUTV (2 SEAT) -KIRCHER AND SHERMAN				ICP/0700	ICP/2100	
<b>6. Control Operations/Work Assignments:</b>						
<b>8. Division/Group Communication Summary</b>						
Function	Channel	RX Frequency N/W	RX Tone/NAC	TX Frequency N/W	TX Tone/NAC	Mode
COMMAND	CMD 7	168.4750	123.0	165.4000	123.0	A
COMMAND	CMD 8	169.5375	123.0	164.7125	123.0	A
COMMAND	CMD 10	170.0125	123.0	165.2500	123.0	A
COMMAND	CMD 11	170.4125	123.0	165.9625	123.0	A
TACTICAL	TAC 2	168.2000	123.0	168.2000	123.0	A
AIR TO GROUND	A/G PRI	169.1500	000.0	169.1500	000.0	A
AIR TO GROUND	A/G SEC	168.4000	000.0	168.4000	000.0	A
<b>9. Prepared By (Resource Unit Leader)</b>			<b>Approved By (Planning Section Chief)</b>		<b>Date</b>	<b>Time</b>
CHRIS VOLK			JILL JOHNSON		07/13/2024	2100

## Division/Group Assignment List (ICS 204 WF)

Controlled Unclassified Information//Basic

<b>1. Incident Name:</b>			<b>3.</b>			
PIONEER			<b>IV</b>	<b>CONTINGENCY</b>		
<b>2. Operational Period:</b> 0700-2100						
Date/Time From:	SUN	Date/Time To:	SUN			
07/14/2024 0700		07/14/2024 2100				
<b>4. Operations Personnel</b>						
<b>OPERATIONS CHIEF</b>	AARON ROWE, LONNIE NEWTON (T)		<b>BRANCH DIRECTOR</b>	TIM BARNETT		
<b>DIVISION/GROUP SUPERVISOR</b>	HEIDI SPRENGER, ROY BOOTS (T)		<b>AIR OPS BRANCH DIRECTOR</b>	PAUL BALFOUR		
<b>6. Control Operations/Work Assignments:</b>						
<p><b>Task:</b> Implement control lines from H45 to DP53. Continue road maintenance on 4330 and 4010. Continue the POD line from DP53 to Lake Chelan.</p> <p><b>Purpose:</b> To protect critical values at risk.</p> <p><b>End state:</b> To have established control lines in place that correspond to Pioneer Fire strategic plan.</p>						
<b>7. Special Instructions:</b>						
<p>-Ensure hazard mitigations and IWI protocols are in place before taking action.</p> <p>-Contingency resources working DIV H: Do not draft from Gold Creek to Black Canyon Creek.</p> <p>-Work with READS to maintain resource protection.</p> <p>Antilon line construction (H47-Goff Peak) tree process &amp; thin specs:</p> <p>--Whole tree yard to READ-designated landings; cut &amp; process at landings; do not sort along 8200 road</p> <p>--Retain 30 trees per acre (~ 40'x40' spacing)</p> <p>--Do not cut trees &gt;16", unless deemed a hazard tree</p> <p>--Preferential order for tree retention, first keep: white bark pine, Ponderosa Pine, Douglas-Fir, then lodgepole pine</p> <p>--No restrictions on brush removal</p> <p>-** Denotes available for Initial Attack</p> <p>-Designated resources are available for Initial Attack response per the Pioneer Fire IA Response Plan. Number and type of resources mobilized to a new start will be determined by anticipated or requested need. Resources will be led by overhead at the Strike Team Leader level or above.</p> <p>-If Initial Attack occurs within the TFR, Wenatchee Dispatch will coordinate with appropriate duty officer and contact Field Ops for response.</p> <ul style="list-style-type: none"> <li>Field Operations will contact the Structure/IA Group Supervisor and/or Air Operations to coordinate response to new start.</li> <li>Local forest Initial Attack frequencies will be used and provided in the IAP Communications Plan.</li> <li>The same process will be used for fires outside of TFR if assistance from Pioneer fire resources is requested.</li> </ul>						
<b>8. Division/Group Communication Summary</b>						
Function	Channel	RX Frequency N/W	RX Tone/NAC	TX Frequency N/W	TX Tone/NAC	Mode
COMMAND	CMD 7	168.4750	123.0	165.4000	123.0	A
COMMAND	CMD 8	169.5375	123.0	164.7125	123.0	A
COMMAND	CMD 10	170.0125	123.0	165.2500	123.0	A
COMMAND	CMD 11	170.4125	123.0	165.9625	123.0	A
TACTICAL	TAC 2	168.2000	123.0	168.2000	123.0	A
AIR TO GROUND	A/G PRI	169.1500	000.0	169.1500	000.0	A
AIR TO GROUND	A/G SEC	168.4000	000.0	168.4000	000.0	A
<b>9. Prepared By (Resource Unit Leader)</b>			<b>Approved By (Planning Section Chief)</b>		<b>Date</b>	<b>Time</b>
CHRIS VOLK			JILL JOHNSON		07/13/2024	2100

**Division/Group Assignment List (ICS 204 WF)**  
**Controlled Unclassified Information//Basic**

<b>1. Incident Name:</b>				<b>3.</b>		
PIONEER				Branch:  IV	Division/Group:  ROADS	
<b>2. Operational Period:</b> 0700-2100						
Date/Time From: 07/14/2024 0700 SUN		Date/Time To: 07/14/2024 2100 SUN				
<b>4. Operations Personnel</b>						
<b>OPERATIONS CHIEF</b>		AARON ROWE, LONNIE NEWTON (T)		<b>BRANCH DIRECTOR</b>		TIM BARNETT
<b>DIVISION/GROUP SUPERVISOR</b>		FIDEL VERDUZCO, ERINKATE SPRINGER (T)		<b>AIR OPS BRANCH DIRECTOR</b>		PAUL BALFOUR
<b>5. Resources Assigned this Period</b>						
Strike Team / Task Force / Resource Designator	LWD	Leader	Number Persons	Drop Off PT./Time	Pick Up PT./Time	
O-517 TFLD	07/26	DUSTIN SILVEY	1	ICP/0700	ICP/2100	
O-429 HEQB	07/22	JONATHAN MCFARLAND	1	ICP/0700	ICP/2100	
E-76 WTS2 MOUNTAIN VIEW WILDFIRE	07/17	STEVE FIFE	2	ICP/0700	ICP/2100	
E-83 WTS2 KING HYDROSEEDING	07/24	COSMO TAN	1	ICP/0700	ICP/2100	
E-157 WTS2 PINE MOUNTAIN EXCAVATING	07/24	BOB GOSS	1	ICP/0700	ICP/2100	
E-172 WTS2 KIM KOZELISKY	07/24	RICHARD REYNOLDS	1	ICP/0700	ICP/2100	
E-173 WTS2 RIDGE TOP IRON	07/27	TIM WHITEHURST	1	ICP/0700	ICP/2100	
E-330 WTS2 MVP TEAM	07/25	DALE KONRAD	1	ICP/0700	ICP/2100	
E-333 WTS2 KIM KOZELISKY	07/25	JIM SMITH	1	ICP/0700	ICP/2100	
E-334 WTS2 PANTHER RIDGE FIRE LLC	07/25	DOUG STONE	1	ICP/0700	ICP/2100	
E-307 GRD1 JUSTIN PITTS TRUCKING, INC.	07/24	MIKE WOOTEN	2	ICP/0700	ICP/2100	
E-308 GRD2 PETTET TRANSPORTATION INC.	07/25	MARK ROWE	2	ICP/0700	ICP/2100	
<b>8. Division/Group Communication Summary</b>						
Function	Channel	RX Frequency N/W	RX Tone/NAC	TX Frequency N/W	TX Tone/NAC	Mode
COMMAND	CMD 7	168.4750	123.0	165.4000	123.0	A
COMMAND	CMD 8	169.5375	123.0	164.7125	123.0	A
COMMAND	CMD 10	170.0125	123.0	165.2500	123.0	A
COMMAND	CMD 11	170.4125	123.0	165.9625	123.0	A
TACTICAL	TAC 5	166.7750	123.0	166.7750	123.0	A
AIR TO GROUND	A/G PRI	169.1500	000.0	169.1500	000.0	A
AIR TO GROUND	A/G SEC	168.4000	000.0	168.4000	000.0	A
<b>9. Prepared By (Resource Unit Leader)</b>			<b>Approved By (Planning Section Chief)</b>		<b>Date</b>	<b>Time</b>
JENNIFER NORTON			JILL JOHNSON		07/13/2024	2100

**Division/Group Assignment List (ICS 204 WF)**  
**Controlled Unclassified Information//Basic**

<b>1. Incident Name:</b>				<b>3.</b>			
PIONEER				<b>Branch:</b>  IV		<b>Division/Group:</b>  ROADS	
<b>2. Operational Period:</b> 0700-2100							
Date/Time From: 07/14/2024 0700      SUN		Date/Time To: 07/14/2024 2100      SUN					
<b>4. Operations Personnel</b>							
<b>OPERATIONS CHIEF</b>		AARON ROWE, LONNIE NEWTON (T)		<b>BRANCH DIRECTOR</b>		TIM BARNETT	
<b>DIVISION/GROUP SUPERVISOR</b>		FIDEL VERDUZCO, ERINKATE SPRINGER (T)		<b>AIR OPS BRANCH DIRECTOR</b>		PAUL BALFOUR	
<b>5. Resources Assigned this Period</b>							
Strike Team / Task Force / Resource Designator		LWD	Leader	Number Persons	Drop Off PT./Time	Pick Up PT./Time	
<b>6. Control Operations/Work Assignments:</b>							
<p><b>TASK:</b> Complete road repair on Antoine, 8140, 8020, and Black Canyon Roads.  <b>PURPOSE:</b> To return the roads affected by suppression traffic to their original state.  <b>END STATE:</b> Roads affected by fire suppression use are returned to pre-fire condition.</p>							
<b>7. Special Instructions:</b>							
-Ensure hazard mitigations and IWI protocols are in place before taking action.							
<b>8. Division/Group Communication Summary</b>							
Function	Channel	RX Frequency N/W	RX Tone/NAC	TX Frequency N/W	TX Tone/NAC	Mode	
COMMAND	CMD 7	168.4750	123.0	165.4000	123.0	A	
COMMAND	CMD 8	169.5375	123.0	164.7125	123.0	A	
COMMAND	CMD 10	170.0125	123.0	165.2500	123.0	A	
COMMAND	CMD 11	170.4125	123.0	165.9625	123.0	A	
TACTICAL	TAC 5	166.7750	123.0	166.7750	123.0	A	
AIR TO GROUND	A/G PRI	169.1500	000.0	169.1500	000.0	A	
AIR TO GROUND	A/G SEC	168.4000	000.0	168.4000	000.0	A	
<b>9. Prepared By (Resource Unit Leader)</b>			<b>Approved By (Planning Section Chief)</b>			<b>Date</b>	<b>Time</b>
JENNIFER NORTON			JILL JOHNSON			07/13/2024	2100

## Division/Group Assignment List (ICS 204 WF)

Controlled Unclassified Information//Basic

<b>1. Incident Name:</b>			<b>3.</b>			
PIONEER			<b>IV</b>	<b>STAGING</b>		
<b>2. Operational Period:</b> 0700-2100						
Date/Time From: 07/14/2024 0700	SUN	Date/Time To: 07/14/2024 2100	SUN			
<b>4. Operations Personnel</b>						
<b>OPERATIONS CHIEF</b>		AARON ROWE, LONNIE NEWTON (T)		<b>BRANCH DIRECTOR</b>		TIM BARNETT
<b>DIVISION/GROUP SUPERVISOR</b>		MIKE EMERICK		<b>AIR OPS BRANCH DIRECTORY</b>		PAUL BELFOUR
<b>5. Resources Assigned this Period</b>						
Strike Team / Task Force / Resource Designator	LWD	Leader	Number Persons	Drop Off PT./Time	Pick Up PT./Time	
C-51 CR2I PATRICK ENVIRONMENTAL, INC. NCC 18A	07/27	BENJAMIN LEWIS	20	ICP/0700	ICP/2100	
E-339 WTS2 ARCHER MOUNTAIN	07/26	DAVE CREW	1	ICP/0700	ICP/2100	
<b>6. Control Operations/Work Assignments:</b>						
<p><b>Task:</b> Resources remain available for divisions needs. Mobilization to division is efficient and timely.</p> <p><b>Purpose:</b> To assist divisions as needed to complete missions as appropriate.</p> <p><b>End state:</b> Suppression efforts have been supported effectively.</p>						
<b>7. Special Instructions:</b>						
<b>8. Division/Group Communication Summary</b>						
Function	Channel	RX Frequency N/W	RX Tone/NAC	TX Frequency N/W	TX Tone/NAC	Mode
COMMAND	CMD 7	168.4750	123.0	165.4000	123.0	A
COMMAND	CMD 10	170.0125	123.0	165.2500	123.0	A
TACTICAL	TAC 5	166.7750	123.0	166.7750	123.0	A
AIR TO GROUND	A/G PRI	169.1500	000.0	169.1500	000.0	A
AIR TO GROUND	A/G SEC	168.4000	000.0	168.4000	000.0	A
<b>9. Prepared By (Resource Unit Leader)</b>			<b>Approved By (Planning Section Chief)</b>		<b>Date</b>	<b>Time</b>
JENNIFER NORTON			JILL JOHNSON		07/13/2024	2100



# Division/Group Assignment List (ICS 204 WF)

Controlled Unclassified Information//Basic

<b>1. Incident Name:</b>				<b>3.</b>			
PIONEER				<b>Branch:</b>  V		<b>Division/Group:</b>  LAKE SHORE	
<b>2. Operational Period:</b> 0700-2100							
Date/Time From: 07/14/2024 0700      SUN		Date/Time To: 07/14/2024 2100      SUN					
<b>4. Operations Personnel</b>							
<b>OPERATIONS CHIEF</b>		AARON ROWE, LONNIE NEWTON (T)		<b>BRANCH DIRECTOR</b>		JEROMY WILSON	
<b>DIVISION/GROUP SUPERVISOR</b>		JON STONELAKE, NICK WIGLE (T)		<b>AIR OPS BRANCH DIRECTOR</b>		PAUL BALFOUR	
<b>5. Resources Assigned this Period</b>							
Strike Team / Task Force / Resource Designator		LWD	Leader	Number Persons	Drop Off PT./Time	Pick Up PT./Time	
O-424 TFLD		07/23	SAMUEL DAUGHERTY	1	SAFETY HARBOR/0700	SAFETY HARBOR/2100	
O-495 TFLD (T)		07/23	ROY TAYLOR	1	SAFETY HARBOR/0700	SAFETY HARBOR/2100	
C-42 CR2I SRV #14		07/22	UBALDO VIERA	20	SAFETY HARBOR/0700	SAFETY HARBOR/2100	
O-461 MEDIC 16		07/22	KELLY MAX	1	25 MILE /0700	25 MILE/2100	
<b>6. Control Operations/Work Assignments:</b>							
<p><b>TASK:</b> Protect Forest Service infrastructure and private property by assessing structures and implementing mitigation actions between Moore Point to Stehekin.</p> <p><b>PURPOSE:</b> To prevent fire impacts to property and infrastructure.</p> <p><b>END STATE:</b> Infrastructure along the lake has been protected from fire impacts.</p>							
<b>7. Special Instructions:</b>							
<p>-In large or long term spike camps use helicopters, boats, or pack stock to deliver portable backcountry latrines and remove human waste if necessary. If camp does not have adequate pack, boat, or air support for human waste management, establish community latrines well away from water sources and common areas. Use human waste bags, if necessary.</p> <p>-Ensure hazard mitigations and IWI protocols are in place before taking action.</p> <p>** Denotes available for Initial Attack</p>							
<b>8. Division/Group Communication Summary</b>							
Function	Channel	RX Frequency N/W	RX Tone/NAC	TX Frequency N/W	TX Tone/NAC	Mode	
COMMAND	CMD 7	168.4750	123.0	165.4000	123.0	A	
COMMAND	CMD 10	170.0125	123.0	165.2500	123.0	A	
COMMAND	CMD 11	170.4125	123.0	165.9625	123.0	A	
TACTICAL	TAC 3	168.6000	123.0	168.6000	123.0	A	
AIR TO GROUND	A/G PRI	169.1500	000.0	169.1500	000.0	A	
AIR TO GROUND	A/G SEC	168.4000	000.0	168.4000	000.0	A	
<b>9. Prepared By (Resource Unit Leader)</b>			<b>Approved By (Planning Section Chief)</b>			<b>Date</b>	<b>Time</b>
JENNIFER NORTON			JILL JOHNSON			07/13/2024	2100

## Division/Group Assignment List (ICS 204 WF)

Controlled Unclassified Information//Basic

<b>1. Incident Name:</b>				<b>3.</b>			
PIONEER				<b>Branch:</b>  V		<b>Division/Group:</b>  BOAT	
<b>2. Operational Period:</b> 0700-2100							
Date/Time From: 07/14/2024 0700		Date/Time To: 07/14/2024 2100					
SUN		SUN					
<b>4. Operations Personnel</b>							
<b>OPERATIONS CHIEF</b>		AARON ROWE, LONNIE NEWTON (T)		<b>BRANCH DIRECTOR</b>		JEROMY WILSON	
<b>DIVISION/GROUP SUPERVISOR</b>		SAM STEINHOUER, TOSTEN KULAAS		<b>AIR OPS BRANCH DIRECTOR</b>		PAUL BALFOUR	
<b>5. Resources Assigned this Period</b>							
Strike Team / Task Force / Resource Designator		LWD	Leader	Number Persons	Drop Off PT./Time	Pick Up PT./Time	
O-458 TFLD		07/22	GREG SEALS	1	LUCERNE/0700	LUCERNE/2100	
O-469 TFLD		07/23	BRIAN JAMES	1	ICP/0700	ICP/2100	
O-559 TFLD		07/26	KERRY WEBSTER	1	ICP/0700	ICP/2100	
O-263 TFLD (T)		07/18	AARON PEDERSEN	1	ICP/0700	ICP/2100	
O-369 TFLD (T)		07/15	KATY GIDDINGS	1	ICP/0700	ICP/2100	
O-331 HEQB		07/16	BRANDON REED	1	ICP/0700	ICP/2100	
O-332 HEQB		07/15	ERIC WEINKE	1	LUCERNE/0700	LUCERNE/2100	
O-354 HEQB		07/23	LOGAN PIKE	1	LUCERNE/0700	LUCERNE/2100	
O-361 HEQB (T)		07/16	THOMAS DOWDY	1	LUCERNE/0700	LUCERNE/2100	
O-368 HEQB (T)		07/16	COLE BINGHAM	1	LUCERNE/0700	LUCERNE/2100	
E-1 TBOT WA-NCP BOAT *CWN			SONJA SHAW	1	STEHEKIN/0700	STEHEKIN/2100	
E-3 TBOT CHELAN CO. F&R#7 *O/S, *N/O (LAKE SHORE)			BRANDON ASHER	2	FS DOCK/0700	FS DOCK/2100	
E-12 TBOT CHELAN RD *M-SA			DICK GORDON	1	FS DOCK/0700	FS DOCK/2100	
E-43 TBOT LLAMAS BOAT *O/S			GAYLE THOMAS	1	FS DOCK/0700	FS DOCK/2100	
E-91 TBOT DNR/MUD PUPPY *N/O		07/26	CRAIG Inderwiesen	1	LUCERNE/0700	LUCERNE/2100	
E-98 TBOT CHELAN COUNTY SHERIFFS *O/S			RICH MAGNUSSEN	2	FS DOCK/0700	FS DOCK/2100	
<b>8. Division/Group Communication Summary</b>							
Function	Channel	RX Frequency N/W	RX Tone/NAC	TX Frequency N/W	TX Tone/NAC	Mode	
COMMAND	CMD 7	168.4750	123.0	165.4000	123.0	A	
COMMAND	CMD 8	169.5375	123.0	164.7125	123.0	A	
COMMAND	CMD 9	170.4500	123.0	168.1000	123.0	A	
COMMAND	CMD 10	170.0125	123.0	165.2500	123.0	A	
COMMAND	CMD 11	170.4125	123.0	165.9625	123.0	A	
TACTICAL	TAC 6	168.2500	123.0	168.2500	123.0	A	
AIR TO GROUND	A/G PRI	169.1500	000.0	169.1500	000.0	A	
AIR TO GROUND	A/G SEC	168.4000	000.0	168.4000	000.0	A	
<b>9. Prepared By (Resource Unit Leader)</b>			<b>Approved By (Planning Section Chief)</b>			<b>Date</b>	<b>Time</b>
JENNIFER NORTON			JILL JOHNSON			07/13/2024	2100

## Division/Group Assignment List (ICS 204 WF)

Controlled Unclassified Information//Basic

<b>1. Incident Name:</b>				<b>3.</b>			
PIONEER				<b>Branch:</b>  V		<b>Division/Group:</b>  BOAT	
<b>2. Operational Period:</b> 0700-2100							
Date/Time From: 07/14/2024 0700      SUN		Date/Time To: 07/14/2024 2100      SUN					
<b>4. Operations Personnel</b>							
<b>OPERATIONS CHIEF</b>		AARON ROWE, LONNIE NEWTON (T)		<b>BRANCH DIRECTOR</b>		JEROMY WILSON	
<b>DIVISION/GROUP SUPERVISOR</b>		SAM STEINHOUER, TOSTEN KULAAS		<b>AIR OPS BRANCH DIRECTOR</b>		PAUL BALFOUR	
<b>5. Resources Assigned this Period</b>							
Strike Team / Task Force / Resource Designator		LWD	Leader	Number Persons	Drop Off PT./Time	Pick Up PT./Time	
E-120 TBOT PILGRIM		07/17	KIP ZWOLENSKI	1	LUCERNE/0700	LUCERNE/2100	
E-121 TBOT BRINNON FIRE *N/O		07/19	CHRISTOPHER DOLAN	2	LUCERNE/0700	LUCERNE/2100	
E-201 TBOT SEA FALCON		07/21	KAWAI LAROYA	2	FS DOCK/0700	FS DOCK/2100	
E-202 TBOT RIVER RUNNER *N/O (LAKE SHORE)		07/21	MATT RYLAK	2	FS DOCK/0700	FS DOCK/2100	
E-295 TBOT PUGET PROTECTOR *N/O		07/24	RYKER GIBSON	2	STEHEKIN/0700	STEHEKIN/2100	
E-296 TBOT FRV #9 *N/O		07/24	TOM PETRICH	2	LUCERNE/0700	LUCERNE/2100	
E-297 TBOT PIONEER PREDATOR				2			
C-28.19 LEND LEASE FFT2		07/15	CASE CRUTCHER	1	LUCERNE/0700	LUCERNE/2100	
LEND LEASE FFT2		07/15	COOPER CATES	1	LUCERNE/0700	LUCERNE /2100	
O-357 MEDIC 10		07/15	SEAN HENDRON	1	LUCERNE/0700	LUCERNE/2100	
<b>8. Division/Group Communication Summary</b>							
Function	Channel	RX Frequency N/W	RX Tone/NAC	TX Frequency N/W	TX Tone/NAC	Mode	
COMMAND	CMD 7	168.4750	123.0	165.4000	123.0	A	
COMMAND	CMD 8	169.5375	123.0	164.7125	123.0	A	
COMMAND	CMD 9	170.4500	123.0	168.1000	123.0	A	
COMMAND	CMD 10	170.0125	123.0	165.2500	123.0	A	
COMMAND	CMD 11	170.4125	123.0	165.9625	123.0	A	
TACTICAL	TAC 6	168.2500	123.0	168.2500	123.0	A	
AIR TO GROUND	A/G PRI	169.1500	000.0	169.1500	000.0	A	
AIR TO GROUND	A/G SEC	168.4000	000.0	168.4000	000.0	A	
<b>9. Prepared By (Resource Unit Leader)</b>			<b>Approved By (Planning Section Chief)</b>			<b>Date</b>	<b>Time</b>
JENNIFER NORTON			JILL JOHNSON			07/13/2024	2100

**Division/Group Assignment List (ICS 204 WF)**  
**Controlled Unclassified Information//Basic**

<b>1. Incident Name:</b>				<b>3.</b>			
PIONEER				<b>Branch:</b>		<b>Division/Group:</b>	
<b>2. Operational Period:</b> 0700-2100				V		BOAT	
Date/Time From: 07/14/2024 0700 SUN		Date/Time To: 07/14/2024 2100 SUN					
<b>4. Operations Personnel</b>							
<b>OPERATIONS CHIEF</b>		AARON ROWE, LONNIE NEWTON (T)		<b>BRANCH DIRECTOR</b>		JEROMY WILSON	
<b>DIVISION/GROUP SUPERVISOR</b>		SAM STEINHOUER, TOSTEN KULAAS		<b>AIR OPS BRANCH DIRECTOR</b>		PAUL BALFOUR	
<b>5. Resources Assigned this Period</b>							
Strike Team / Task Force / Resource Designator		LWD	Leader	Number Persons	Drop Off PT./Time	Pick Up PT./Time	
<b>6. Control Operations/Work Assignments:</b>							
<p><b>Task:</b> Provide logistical needs for all fire activities on navigable waters.  <b>Purpose:</b> Adequately support the needs of incident personnel in areas not accessible by roads.  <b>End state:</b> Deliver supplies and personnel providing a timely, safe and effective operation.</p>							
<b>7. Special Instructions:</b>							
<p>-Follow instructions in IAP for requesting Ferry Tickets.          -All emergency medical requests for boats go through Pioneer Communications.          -* O/S – Operator Swaps As Needed, *CWN – Call When Needed, *M-SA – Operator takes every Sunday off          -*N/O- Night Operation Capable</p>							
<b>8. Division/Group Communication Summary</b>							
Function	Channel	RX Frequency N/W	RX Tone/NAC	TX Frequency N/W	TX Tone/NAC	Mode	
COMMAND	CMD 7	168.4750	123.0	165.4000	123.0	A	
COMMAND	CMD 8	169.5375	123.0	164.7125	123.0	A	
COMMAND	CMD 9	170.4500	123.0	168.1000	123.0	A	
COMMAND	CMD 10	170.0125	123.0	165.2500	123.0	A	
COMMAND	CMD 11	170.4125	123.0	165.9625	123.0	A	
TACTICAL	TAC 6	168.2500	123.0	168.2500	123.0	A	
AIR TO GROUND	A/G PRI	169.1500	000.0	169.1500	000.0	A	
AIR TO GROUND	A/G SEC	168.4000	000.0	168.4000	000.0	A	
<b>9. Prepared By (Resource Unit Leader)</b>			<b>Approved By (Planning Section Chief)</b>			<b>Date</b>	<b>Time</b>
JENNIFER NORTON			JILL JOHNSON			07/13/2024	2100

## Division/Group Assignment List (ICS 204 WF)

Controlled Unclassified Information//Basic

<b>1. Incident Name:</b>				<b>3.</b>			
PIONEER				<b>Branch:</b>  V		<b>Division/Group:</b>  STRUCTURE/IA	
<b>2. Operational Period:</b> 0700-2100							
Date/Time From: 07/14/2024 0700      SUN		Date/Time To: 07/14/2024 2100      SUN					
<b>4. Operations Personnel</b>							
<b>OPERATIONS CHIEF</b>		AARON ROWE, LONNIE NEWTON (T)		<b>BRANCH DIRECTOR</b>		JEROMY WILSON	
<b>DIVISION/GROUP SUPERVISOR</b>		SCOTT CLEAVE		<b>AIR OPS BRANCH DIRECTOR</b>		PAUL BALFOUR	
<b>5. Resources Assigned this Period</b>							
Strike Team / Task Force / Resource Designator		LWD	Leader	Number Persons	Drop Off PT./Time	Pick Up PT./Time	
O-491 SOFR		07/24	JONATHAN T LEE	1	ICP/0700	ICP/2100	
C-48 CRW2 NORTH PACIFIC FORESTRY		07/23	OSCAR SANCHES	20	ICP/0700	ICP/2100	
C-49 CRW2 NORTH PACIFIC FORESTRY		07/23	BERTHA MARTINEZ	20	ICP/0700	ICP/2100	
O-482 TFLD		07/22	MARCUS WELLS	1	ICP/0700	ICP/2100	
O-483 STEN (T)		07/22	CHUCK W KOCHER	1	ICP/0700	ICP/2100	
E-281 ENG5 CHELAN CO. FD #6		07/22	AUSTIN SABEDRA	3	ICP/0700	ICP/2100	
E-282 ENG5 CHELAN CO FD#3		07/22	NATHAN RICHMAN	2	ICP/0700	ICP/2100	
E-283 ENG3 CHELAN F&R		07/22	TROY KEENE	3	ICP/0700	ICP/2100	
E-284 ENG5 CITY OF MOSES LAKE		07/22	LUKE GARRISON	3	ICP/0700	ICP/2100	
E-285 ENG3 CHELAN CO FD #9		07/22	ANLYN FLAKE	3	ICP/0700	ICP/2100	
E-231 ENG5 MONTANA DNRA		07/22	ERNEST LEE NACE	5	ICP/0700	ICP/2100	
E-232 ENG5 MONTANA DNRC		07/22	SOL ARNO	3	ICP/0700	ICP/2100	
E-233 ENG5 MONTANA DNRC		07/20	BRAEDEN MIKKELSON	3	ICP/0700	ICP/2100	
E-234 ENG6 IDAHO IDL		07/21	COLE SCHIERMEISTER	4	ICP/0700	ICP/2100	
E-325 ENG6 METHOW RIVER WILD FIRE		07/25	IVAN MUNOZ	3	ICP/0700	ICP/2100	
<b>8. Division/Group Communication Summary</b>							
Function	Channel	RX Frequency N/W	RX Tone/NAC	TX Frequency N/W	TX Tone/NAC	Mode	
COMMAND	CMD 7	168.4750	123.0	165.4000	123.0	A	
COMMAND	CMD 10	170.0125	123.0	165.2500	123.0	A	
TACTICAL	TAC 4	166.7250	123.0	166.7250	123.0	A	
AIR TO GROUND	A/G PRI	169.1500	000.0	169.1500	000.0	A	
AIR TO GROUND	A/G SEC	168.4000	000.0	168.4000	000.0	A	
<b>9. Prepared By (Resource Unit Leader)</b>			<b>Approved By (Planning Section Chief)</b>			<b>Date</b>	<b>Time</b>
JENNIFER NORTON			JILL JOHNSON			07/13/2024	2100

## Division/Group Assignment List (ICS 204 WF)

Controlled Unclassified Information//Basic

<b>1. Incident Name:</b>				<b>3.</b>			
PIONEER				<b>Branch:</b>  V		<b>Division/Group:</b>  STRUCTURE/IA	
<b>2. Operational Period:</b> 0700-2100							
Date/Time From: 07/14/2024 0700		Date/Time To: 07/14/2024 2100					
SUN		SUN					
<b>4. Operations Personnel</b>							
<b>OPERATIONS CHIEF</b>		AARON ROWE, LONNIE NEWTON (T)		<b>BRANCH DIRECTOR</b>		JEROMY WILSON	
<b>DIVISION/GROUP SUPERVISOR</b>		SCOTT CLEAVE		<b>AIR OPS BRANCH DIRECTOR</b>		PAUL BALFOUR	
<b>5. Resources Assigned this Period</b>							
Strike Team / Task Force / Resource Designator		LWD	Leader	Number Persons	Drop Off PT./Time	Pick Up PT./Time	
E-178 WTS2 NORTHERN		07/25	BILL ACKERSON	1	ICP/0700	ICP/2100	
E-179 WTS2 KING HYDROSEEDING		07/24	JOHN GRABOWSKI	1	ICP/0700	ICP/2100	
O-460 MEDIC 17		07/22	TREVOR LEARY	1	ICP/0700	ICP/2100	
<b>6. Control Operations/Work Assignments:</b>							
<p><b>TASK:</b> Complete structure protection plan for Manson, working with local partners and authorities. Complete sprinkler plan for Emerson Acres.</p> <p><b>PURPOSE:</b> Plan for and mitigate potential long-term impact to communities down lake from fire.</p> <p><b>END STATE:</b> Plan has been developed and mitigation implemented for protection of structures in and around Manson.</p>							
<b>7. Special Instructions:</b>							
<p>-Ensure hazard mitigations and IWI protocols are in place before taking action.</p> <p>-All resources in Structure/IA Group are available for Initial Attack response per the Pioneer Fire IA Response Plan. Number and type of resources mobilized to a new start will be determined by anticipated or requested need. Resources will be led by overhead at the Strike Team Leader level or above.</p> <p>-If Initial Attack occurs within the TFR, Wenatchee Dispatch will coordinate with appropriate duty officer and contact Field Ops for response.</p> <ul style="list-style-type: none"> <li>Field Operations will contact the Structure/IA Group Supervisor and/or Air Operations to coordinate response to new start.</li> <li>Local forest Initial Attack frequencies will be used and provided in the IAP Communications Plan.</li> <li>The same process will be used for fires outside of TFR if assistance from Pioneer fire resources is requested.</li> </ul>							
<b>8. Division/Group Communication Summary</b>							
Function	Channel	RX Frequency N/W	RX Tone/NAC	TX Frequency N/W	TX Tone/NAC	Mode	
COMMAND	CMD 7	168.4750	123.0	165.4000	123.0	A	
COMMAND	CMD 10	170.0125	123.0	165.2500	123.0	A	
TACTICAL	TAC 4	166.7250	123.0	166.7250	123.0	A	
AIR TO GROUND	A/G PRI	169.1500	000.0	169.1500	000.0	A	
AIR TO GROUND	A/G SEC	168.4000	000.0	168.4000	000.0	A	
<b>9. Prepared By (Resource Unit Leader)</b>			<b>Approved By (Planning Section Chief)</b>			<b>Date</b>	<b>Time</b>
JENNIFER NORTON			JILL JOHNSON			07/13/2024	2100

AIR OPERATIONS SUMMARY ICS-220						Time Prepared 18:00		Date Prepared 7/13/2024		Prepared By Paul Balfour - AOBD			
Incident Name / Number Pioneer / WA-SES-000173		Sunrise 05:19	Sunset 20:54	Airport S10	Pumpkin 21:24	Shutdown 21:00		Operational Period - Date 7/14/2024		Operational Period - Time 0700-2100			
General Remarks, Safety Notes, Hazards, Air Operations Special Equipment, etc.:						Helibase Information		TFR (A-74) Surface to 10,000' 4/6779 TFR Freq 123.4000 In Effect - 24 Hours		Medical Ship Information Medivac/Medical Transport Ship: Operational Hours: 0900 to 2100 Call Pioneer Helibase 971.762.8575			
<p>*Order All Aircraft over Command to Helibase.            *All GPS coordinates to be collected in Degrees and Decimal Minutes (DMM).            *Be mindful of all overhead and environmental hazards while working with aircraft.            *Clear drop area/line before initiating drop sequence.            *If dipping out of Columbia River, sanitize buckets before changing water sources.            *** WINDS: return to helibase if winds become unmanageable.</p> <p>*Aviation daily cost to: 2024.pioneer.finance@firenet.gov            *Aviation daily cost to: pioneerhelibase2024@gmail.com</p>						<p><b>Primary:</b>  <b>Pioneer HB (Chelan Airport)</b>            Location: 47 51.96 N / 119 56.56 W            Phone: (971) 762-8575</p> <p><b>Type 1 Helicopters:</b>  <b>Valley HB (Methow Valley Airport)</b>            Location: 48 25.567 N / 120 08.513 W            Phone: (971) 727-7255</p>		<p><b>Helispots</b>            H-1   48 10.755' N / 120 31.803' W            H-5   48 12.162' N / 120 35.447' W            H-10   48 14.050' N / 120 36.461' W            H12   48 13.325' N / 120 35.908' W            H-14 (Stehekin A/P)   48 20.75' N / 120 43.25' W            H-16   48 07.74' N / 120 29.55' W            H-25   47 59.212' N / 120 16.526' W            H-40   48 06.357' N / 120 20.452' W</p>		<p><b>Short-Haul Platform:</b>            Operational Hours: 0900 to 2100            Order through Pioneer Helibase</p>			
Incident Frequencies	RX	Tone	TX	Tone	AM/FM	Position	Name	Phone	EQUIPMENT/SUPPLIES				
Air to Air Primary (A-8)	123.4000		123.4000		AM	AOBD	Paul Balfour	(509) 993-8739	Commo Trailer (Pioneer)	E-20			
Air to Air Secondary (A-9)	118.2750		118.2750		AM	AOBD(t)	Kelly Hedgepeth	(541) 805-8416	Hand Wash Station (Pioneer)	E-47			
						ASGS	Tim Lyda	(541) 761-2676	Mobile Office Trailer (Pioneer)	E-224			
A/G Pri Tactical (A-10)	169.1500		169.1500		FM	ASGS(t)	Heather Wonenberg	(209) 347-7546	Water Tender (Pioneer)	E-77			
A/G Sec Operational (A-11)	168.4000		168.4000		FM	Air Attack	Bob Madden	(541) 350-0021	Water Tender (Pioneer)	E-14			
						Air Attack (t)	Zak Tayer	(509) 952-7419	Commo Trailer (Valley)	E-150			
A/G 3 (Cargo)	166.6125		166.6125		FM	HEBM Pioneer	Jeff Quick	(928) 853-3027	Water Tender (Valley)	E-158			
						HEBM(t) Pioneer	Alex Watson	(541) 240-9330					
DECK	163.1000		163.1000		FM	HEBM Valley	Randy McLandress	(509) 668-7243					
						HEBM(t) Valley	Willow Merritt	(503) 250-4597					
COMMAND	See ICS 205 Communications Plan												
						FOBS/UR-47	Kelly Lewis	(208) 721-0232					
VMED 29	155.3475	156.7	155.3475	156.7	FM	UASL-31	Patrick Clark	(661) 342-6955					
AIR GUARD	168.6250		168.6250	110.9	FM	UAS - Entiat IHC	Hannah Coolidge	(301) 919-9973					
National Flight Following	168.6500	110.9	168.6500	110.9	FM	CWICC	Aircraft Desk	(509) 884-3473 ext. 2					
						OWF-UAO	Cory Dolberry	(509) 668-2801					
HELICOPTERS - Assigned							HELICOPTERS - GACC Prepo and Lend/Lease						
FAA #	TYPE	Make/Model	Helibase	Start	Avail	Remarks	FAA #	TYPE	Make/Model	Airport	Start	Avail	Remarks
HB-16FH (A-81)	1	UH-60	Valley	0800	0900	BKT/LL	H-125CL (A-91)	3	AS-350B3e	EAT	0800	0900	NPS MOCA Short Haul/Recon
HB-161KA (A-24)	1	K-1200	Valley	0800	0900	BKT/LL							
HB-344RA (A-45)	1	CH-47D	Valley	0800	0900	BKT/LL							
N628CK (A-162)	1	SH-3H	Valley	0800	0900	BKT/LL							
N381SH (A-129)	1	UH-60	Valley	0800	0900	BKT/LL							
H-527 (H-811KA) (A-94)	2	Bell 212HP	Chelan	0800	0900	BKT/LL/Pax							
H-669H (A-98)	2	Bell 205 A1 ++	Chelan	0800	0900	BKT/LL/Pax							
H-234BH (A-99)	3	AS-350B3	Chelan	0800	0900	Recon/BKT/Medical							
H-407RL (A-1)	3	Bell 407HP	Chelan	0800	0900	Short Haul/Recon							
UAS							FIXED WING - AirTanker/AA/HLCO						
Call Sign	Type	Make/Model	Base	Start	Avail	Remarks	FAA #	Call Sign	Make/Model	Base	Start	Avail	Remarks
UR-31	3	AltaX	Lucerne	0600	2200	IR/PSD	N-155AV	AA-5AV	King Air	EAT	0900	1000	Assigned AA
UR-46 Entiat IHC	4	Anafi	DIV A	0600	2200	IR	422BT (A-155)	S-285	215T	W20	1000	1900	In Moses Lake
UR-47	4	Anafi	DIV S	0600	2200	Kelly Lewis (FOBS)	406BT (A-156)	S-286	215T	W20	1000	1900	In Moses Lake

# INCIDENT RADIO COMMUNICATIONS PLAN (ICS 205)

Controlled Unclassified Information//Basic

<b>1. Incident Name:</b>	<b>2. Date/Time Prepared:</b>	<b>3. Operational Period:</b> 0700-2100	
PIONEER	Date: 07/13/2024 Time: 2000	Date/Time From: 07/14/2024 0700      SUN	Date/Time To: 07/14/2024 2100      SUN

**4. Basic Radio Channel Use:**

Zone Group	Ch #	Function	Channel Name/Trunked Radio System Talkgroup	Assignment	RX Freq	RX Tone/NAC	TX Freq	TX Tone/NAC	Mode (A,D, or M)	Remarks
	1	TACTICAL	TAC 1	DIV D & S	168.0500	123.0	168.0500	123.0	A	
	2	TACTICAL	TAC 2	DIV A / CONT	168.2000	123.0	168.2000	123.0	A	
	3	TACTICAL	TAC 3	LAKE SHORE	168.6000	123.0	168.6000	123.0	A	
	4	TACTICAL	TAC 4	STRUCTURE / IA	166.7250	123.0	166.7250	123.0	A	
	5	TACTICAL	TAC 5	ROADS / STAGING	166.7750	123.0	166.7750	123.0	A	
	6	TACTICAL	TAC 6	BOAT	168.2500	123.0	168.2500	123.0	A	
	7	COMMAND	CMD 7	ALL	168.4750	123.0	165.4000	123.0	A	CHELAN BUTTE
	8	COMMAND	CMD 8	ALL	169.5375	123.0	164.7125	123.0	A	OLD MAID MTN
	9	COMMAND	CMD 9	ALL	170.4500	123.0	168.1000	123.0	A	MOORE MTN
	10	COMMAND	CMD 10	ALL	170.0125	123.0	165.2500	123.0	A	SLIDE RIDGE
	11	COMMAND	CMD 11	ALL	170.4125	123.0	165.9625	123.0	A	FOX PEAK
	12	AIR TO GROUND	A/G PRI	ALL DIVS	169.1500	000.0	169.1500	000.0	A	
	13	AIR TO GROUND	A/G SEC	ALL DIVS	168.4000	000.0	168.4000	000.0	A	
	14	AIR TO GROUND	A/G 3	ALL DIVS	166.6125	000.0	166.6125	000.0	A	TAKE OFF/LANDING
	15	AIR TO GROUND	VMED 29	ALL DIVS	155.3475	156.7	155.3475	156.7	A	AIR EMS COORD
	16	AIR GUARD	AIRGUARD	ALL DIVS	168.6250	000.0	168.6250	110.9	A	EMERG AIRCRAFT CONTACT

**5. Special Instructions:** 24-HOUR STAFFING: PIONEER COMMUNICATIONS PHONE NUMBER: (208) 891-8093 / CURRENT CLOSE "PIE 6-21"

<b>6. Prepared By</b> (Communications Unit Leader)	Name: MISSY PARKER	Signature: <i>Missy Parker</i>
ICS 205	IAP Page	Date/Time: 07/13/2024 2000



# INCIDENT RADIO COMMUNICATIONS PLAN (ICS 205)

Controlled Unclassified Information//Basic

<b>1. Incident Name:</b>	<b>2. Date/Time Prepared:</b>	<b>3. Operational Period:</b> 0700-2100	
PIONEER	Date: 07/13/2024 Time: 2000	Date/Time From: 07/14/2024 0700      SUN	Date/Time To: 07/14/2024 2100      SUN

**4. Basic Radio Channel Use:**

Zone Group	Ch #	Function	Channel Name/Trunked Radio System Talkgroup	Assignment	RX Freq	RX Tone/NAC	TX Freq	TX Tone/NAC	Mode (A,D, or M)	Remarks
	1	TACTICAL	TAC 1	DIV D & S	168.0500	123.0	168.0500	123.0	A	
	2	TACTICAL	TAC 2	DIV A / CONT	168.2000	123.0	168.2000	123.0	A	
	3	TACTICAL	TAC 3	LAKE SHORE	168.6000	123.0	168.6000	123.0	A	
	4	TACTICAL	TAC 4	STRUCTURE / IA	166.7250	123.0	166.7250	123.0	A	
	5	TACTICAL	TAC 5	ROADS / STAGING	166.7750	123.0	166.7750	123.0	A	
	6	TACTICAL	TAC 6	BOAT	168.2500	123.0	168.2500	123.0	A	
	7	AIR TO GROUND	A/G PRI	ALL DIVS	169.1500	000.0	169.1500	000.0	A	
	8	AIR TO GROUND	A/G SEC	ALL DIVS	168.4000	000.0	168.4000	000.0	A	
	9	AIR TO GROUND	A/G 3	ALL DIVS	166.6125	000.0	166.6125	000.0	A	
	10	COMMAND	CMD 10	ALL	170.0125	123.0	165.2500	123.0	A	SLIDE RIDGE
	11	COMMAND	CMD 11	ALL	170.4125	123.0	165.9625	123.0	A	FOX PEAK
	12	COMMAND	CMD 12	ALL	170.6875	123.0	166.5750	123.0	A	GOAT MTN
	13	COMMAND	GOAT	ALL	172.3500	146.2	165.0125	118.8	A	GOAT MTN
	14	COMMAND	MCLUR	ALL	172.3500	146.2	165.0125	103.5	A	MCLURE MTN
	15	AIR TO GROUND	VMED 29	ALL DIVS	155.3475	156.7	155.3475	156.7	A	AIR EMS COORD
	16	AIR GUARD	AIRGUARD	ALL DIVS	168.6250	000.0	168.6250	110.9	A	EMERG AIRCRAFT CONTACT

**5. Special Instructions:** 24-HOUR STAFFING: PIONEER COMMUNICATIONS PHONE NUMBER: (208) 891-8093 / CURRENT CLOSE "IV"

<b>6. Prepared By</b> (Communications Unit Leader)	Name: MISSY PARKER	Signature: <i>Missy Parker</i>
ICS 205	IAP Page	Date/Time: 07/13/2024 2000

# INCIDENT RADIO COMMUNICATIONS PLAN (ICS 205)

Controlled Unclassified Information//Basic

<b>1. Incident Name:</b>	<b>2. Date/Time Prepared:</b>	<b>3. Operational Period:</b> 0700-2100	
PIONEER	Date: 07/13/2024 Time: 2000	Date/Time From: 07/14/2024 0700      SUN	Date/Time To: 07/14/2024 2100      SUN

**4. Basic Radio Channel Use:**

Zone Group	Ch #	Function	Channel Name/Trunked Radio System Talkgroup	Assignment	RX Freq	RX Tone/NAC	TX Freq	TX Tone/NAC	Mode (A,D, or M)	Remarks
	1	COMMAND	FIRE 1 RP		154.4300	110.9	153.8900	D051	A	LOCAL DISPATCH
	2	COMMAND	NORTH COM RP		155.3550	100.0	150.7900	100.0	A	
	3	TACTICAL	GOAT TAC RP		159.0675	110.9	153.8000	100.0	A	GOAT MTN
	4	TACTICAL	ORANGE		154.2650	107.2	154.2650	107.2	A	
	5	TACTICAL	BLACK		154.3400	151.4	154.3400	151.4	A	
	6	TACTICAL	DNR COMMON		151.4150	103.5	151.4150	103.5	A	
	7	COMMAND	DNR CHELAN RP		159.2250	156.7	151.4750	156.7	A	CHELAN BUTTE
	8	AIR TO GROUND	DNR A/G 1		159.2700	103.5	159.2700	103.5	A	
	9	COMMAND	BUTTE TAC RP		155.1225	192.8	159.0675	162.2	A	CHELAN BUTTE
	10	TACTICAL	FS WEN TAC		167.5500	000.0	167.5500	000.0	A	
	11	COMMAND	FS GOAT RP		169.8750	146.2	172.3500	118.8	A	GOAT MTN
	12	COMMAND	FS SLIDE RP		173.0500	146.2	164.9125	141.3	A	SLIDE RIDGE
	13	AIR TO GROUND	FS A/G 40		167.4500	000.0	167.4500	000.0	A	
	14	TACTICAL	FS TAC		168.2000	000.0	168.2000	000.0	A	
	15	COMMAND	FS BADGER RP		173.0500	146.2	164.9125	127.3	A	BADGER MTN
	16	TACTICAL	REDNET		153.8300	000.0	153.8300	000.0	A	

**5. Special Instructions:** 24-HOUR STAFFING: PIONEER COMMUNICATIONS PHONE NUMBER: (208) 891-8093 / CURRENT CLOSE "IA N CHELAN"

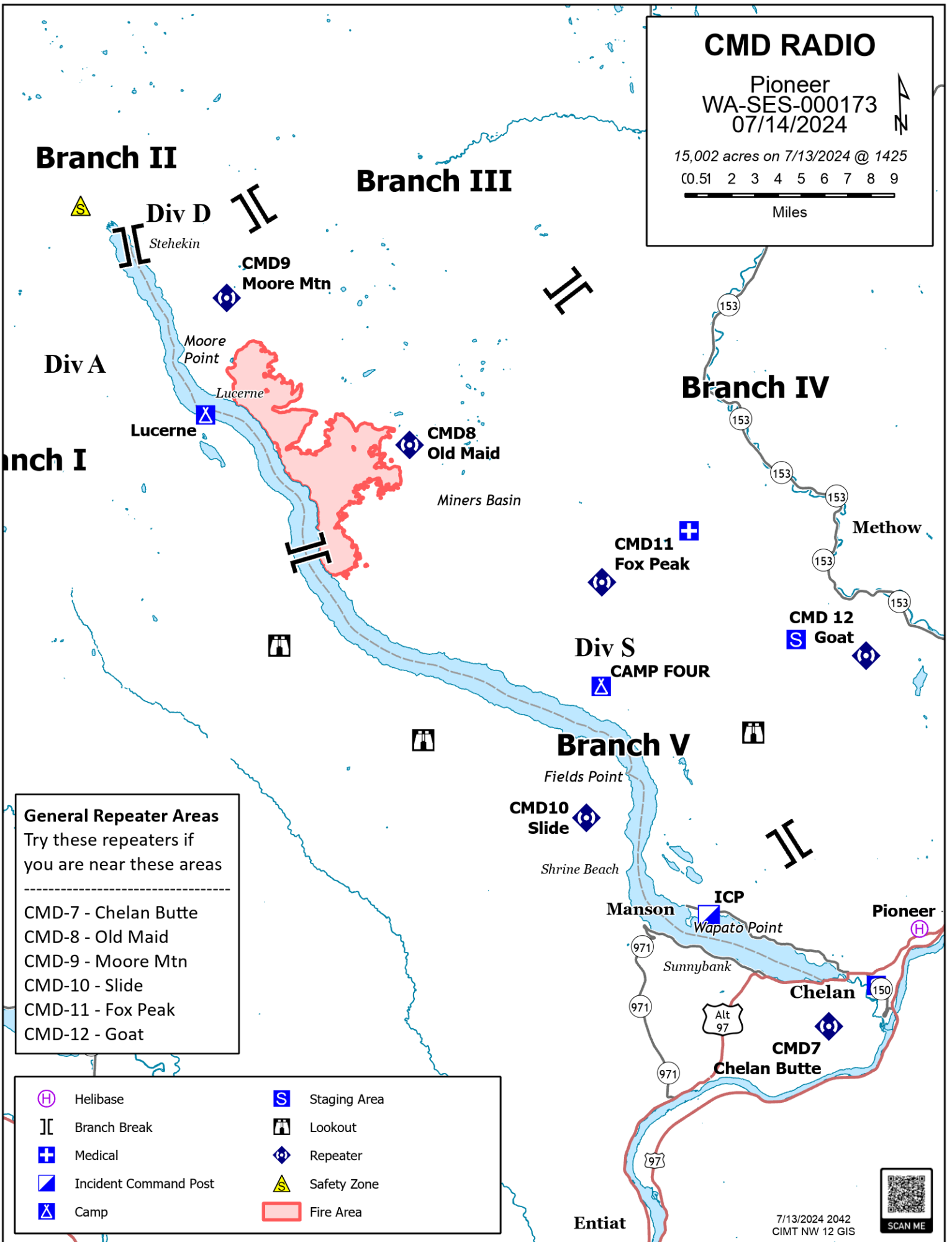
<b>6. Prepared By</b> (Communications Unit Leader)	Name: MISSY PARKER	Signature: <i>Missy Parker</i>
ICS 205	IAP Page	Date/Time: 07/13/2024 2000

# CMD RADIO

Pioneer  
WA-SES-000173  
07/14/2024

15,002 acres on 7/13/2024 @ 1425  
0.51 2 3 4 5 6 7 8 9

Miles



## General Repeater Areas

Try these repeaters if you are near these areas

- 
- CMD-7 - Chelan Butte
- CMD-8 - Old Maid
- CMD-9 - Moore Mtn
- CMD-10 - Slide
- CMD-11 - Fox Peak
- CMD-12 - Goat

- |                       |              |
|-----------------------|--------------|
| Helibase              | Staging Area |
| Branch Break          | Lookout      |
| Medical               | Repeater     |
| Incident Command Post | Safety Zone  |
| Camp                  | Fire Area    |

Entiat

7/13/2024 2042  
CIMT NW 12 GIS



## **Resource Advice**

Lead READ: Eireann Pederson 360-854-8197, [eireann.pederson@usda.gov](mailto:eireann.pederson@usda.gov)

REAF: Brigitte Ranne 509-663-6118, [brigitte.ranne@usda.gov](mailto:brigitte.ranne@usda.gov)

REAF: Hector Rodriguez 509-393-5379, [Hector.Rodriguez3@usda.gov](mailto:Hector.Rodriguez3@usda.gov)

REAF: Carrissa Camenson 360-899-7147, [carissa.camenson@usda.gov](mailto:carissa.camenson@usda.gov)



Resource Guidelines

### *MIST for Spike Camp and Lucerne Forward Operating Base Management*

- Employ minimum impact suppression tactics (MIST) where feasible, especially in remote or sensitive areas.
- If spike camps are necessary, use existing, or previously impacted campsites where available. If existing campsites are not available; use your local resource advisor to help identify the most resilient sites in rocky or sandy soils. Avoid camping in wet meadows, along streams, or on lake shores.
- Store food properly so that it is not accessible to wildlife. Consider hanging food in trees at least 15 feet off the ground and 5 feet from the trunk of the tree, or store food in sealable containers. Store food away from the campsite (300 feet is ideal) to reduce the risk of human and bear (and rodent!) conflicts.
- Do not let garbage and food scraps accumulate in camp. All garbage and food scraps need to be removed from the camp ASAP and before leaving the site.
- Minimize disturbance to land in preparing bedding and campfire sites. Do not clear vegetation, trench, or excavate a flat spot to create bedding sites.
- Do not use nails in trees. Don't construct camp furniture.
- If a campfire is built for warmth in the evening, build either a pit or mound fire. Use dead and down firewood. Use small diameter wood that burns down more cleanly. Don't burn plastics or aluminum - pack it out with the rest of the camp garbage.
- In small spike camp situations (not Lucerne), individuals should use the "cat-hole" method of disposing of human waste. Toilet seats should be located a minimum of 200 feet from water sources. Holes should be dug 6-8 inches deep.
- In large or long term spike the camps use helicopters, boats, or pack stock to deliver portable backcountry latrines and remove human waste if necessary. If the camp does not have adequate pack, boat, or air support for human waste management, establish community latrines well away from water sources and common areas. Use human waste bags, if necessary

### *Dipping and Drafting*

- No cross-dipping between water bodies. All buckets or snorkels should be cleaned, inspected, and dried in the sun if they must be used between lakes. Dipping in small lakes must be pre-approved by the READ or AA.
- When drafting, use already disturbed areas for stream access (road crossings, dispersed campsites) to reduce the need for riparian vegetation clearing.
- Use screens (3/32" inch) for all pumping operations.
- Use containment pads and basins under pumps and fuel cans. Ensure a spill kit is present with every operating pump.

### *Invasive Species*

- The fire is burning within an infestation of common crupina, a WA State Class A Noxious weed. Prevent spread of crupina off site – plan to wash hose and other equipment. Request fire fighters brush boots before boarding boat or before entering National Park Service Land.
- Inspect slings and remove all plant/soil material prior to use.
- Ensure all camps, staging areas, helispots and cargo areas are free of invasive plants to prevent spread to un-infested areas.
- Weed wash all vehicles, including boats, when they arrive to the incident and when demobed.

### *Fisheries /Aquatic Recommendations*

- If trees must be felled in riparian areas for suppression or safety reasons, fell them toward streams where possible and minimize bucking where possible.
- Non-mechanized suppression activities are recommended within Riparian Reserves (150-300 ft from stream channel). For example, consider hand lines instead of dozer lines when feasible.

### *Retardant Use*

- Retardant avoidance areas are present in the fire suppression area for both aquatic and terrestrial species.
- Track all retardant drops – locations and amounts.
- Report all mis-applications ASAP to READ. Monitoring and reporting of misapplications is required.

### *Wet Meadows*

- No line or other disturbance in wet meadows in the Summer Blossom area (east of South Navarre campground above and below the 8200 road) and at Coyote and Poison Springs at the headwaters of their respective creeks.

### *Dry Meadows*

- Minimize disturbance from staging and parking areas in dry meadows. These areas recovery slowly and are vulnerable to invasive plant infestation.

### *White Bark Pine*

- Avoid cutting white bark pine whenever possible. Needles of 5 keep it alive! Ask READ for help with ID.

### *Burnout operations*

- Plan to protect whitebark pine of all ages and mature cold and moist forest during burnouts. READ consultation and line officer approval is required for burn plans that include these forest types.
- During burnouts modify firing to retain large trees, large snags and large down wood in forests whenever possible.
- Minimize total acres burned in burnouts.
- Incorporate typical resource protection measures used in RX burning whenever it is safe and practical to do so (such as retention of green islands in moist areas).
- Provide a map of areas that were burned as part of the burnout operation (for use in emergency consultation).
- If cultural resources are discovered during suppression activities, leave on site and notify READ.

# PIONEER US-WA-SES-000173

## Demob List for Sunday 7/14/2024

OVERHEAD			
O-194	0800	THSP	RAINS, TAYLOR
O-241	0700	OSCC	POYNER, ROB
O-248	0800	TFLD	WARD, JASON HENRY
O-250	0815	DIVS	ELLIS, SETH
O-282	0815	BT25	KILFOIL, BEN
O-293	0830	IMET	KRISTELL, MADELYN BRADY
O-312	1600	HMGB	ANDERSON, SEAN
O-316	0800	FACL	SWICKEY, TAMMY
O-324	0730	HEBM	FOSTER, WILL
O-326	0830	SEC1	ZACHERLE-BOYD, TYLER
O-512	0900	COML	NORDLOH, JARROD

## Demob List for Monday 7/15/2024

CREWS			
C-27	0800	CRWC	BIFZ - CREW #1
EQUIPMENT			
E-93	0815	VUTV	KWIK RESPONSE SUPPORT
E-94	0815	VUTV	KWIK RESPONSE SUPPORT
E-98	0900	TBOT	CHELAN COUNTY SHERIFFS BOAT
E-99	0800	WTS3	NW DIESEL DUDES LLC - A44464
E-105	0800	MBM2	JUSTIN PITTS TRUCKING
E-185	0730	STK2	SOOPS INDUSTRIAL INC - 108828
OVERHEAD			
O-174.60	1400	LSC3	LIPP, KELSEY ELIZABETH
O-314	0800	HMGB	KEARNEY-REEVES, JESSICA R
O-318	1500	SEC2	JENSEN, JASON
O-319	1600	SEC2	HUMPHREY, JEFFREY WAYNE
O-320	1600	SEC2	LE, THEPHONG HOAN
O-321	0800	FDUL	KLINE, MAXINE
O-325	1400	PIO2	CROPP, MARY
O-346	0730	SOFR	ZUARES, DAVID
O-348	0700	OSC2	EBEL, SCOTT R

## Demob List for Tuesday 7/16/2024

<b>CREWS</b>			
<b>C-24</b>	<b>0800</b>	<b>CRWC</b>	<b>COLUMBIA BASIN JOB CORPS</b>
<b>C-28</b>	<b>0730</b>	<b>CR2I</b>	<b>OWF ENTIAT</b>
<b>EQUIPMENT</b>			
<b>E-192</b>	<b>0730</b>	<b>ENG5</b>	<b>E4406 - WA - SES</b>
<b>E-193</b>	<b>0800</b>	<b>ENG5</b>	<b>WA-SES - 4501</b>
<b>E-194</b>	<b>0830</b>	<b>AMB4</b>	<b>AEGIS LOGISTICS</b>
<b>OVERHEAD</b>			
<b>O-201</b>	<b>0900</b>	<b>THSP</b>	<b>ODENRIDER, DUKE</b>
<b>O-294</b>	<b>0730</b>	<b>MEDL</b>	<b>MONROE, CASS JACKSON</b>
<b>O-295</b>	<b>0730</b>	<b>MEDL</b>	<b>GETMAN, JEDEDIAH</b>
<b>O-309</b>	<b>0700</b>	<b>EMPF</b>	<b>MCCALL, BENJAMIN JOHN</b>
<b>O-312</b>	<b>0900</b>	<b>HMGB</b>	<b>ANDERSON, SEAN W</b>
<b>O-331</b>	<b>0800</b>	<b>HEQB</b>	<b>REED, BRANDON G</b>
<b>O-332</b>	<b>0800</b>	<b>HEQB</b>	<b>WEINKE, ERIC RYAN</b>
<b>O-333</b>	<b>0815</b>	<b>HEQB</b>	<b>NEUMEIER, JED</b>
<b>O-339</b>	<b>0900</b>	<b>HMGB</b>	<b>FLOWERS, TRAVIS MALONE</b>
<b>O-344</b>	<b>0700</b>	<b>FELB</b>	<b>HARVEY, JACOB TYLER</b>
<b>O-350</b>	<b>0900</b>	<b>EQPM</b>	<b>STOVER, DOUGLAS RAY</b>
<b>O-351</b>	<b>0830</b>	<b>RCDM</b>	<b>MORGAN, ROBERT W</b>
<b>O-357</b>	<b>0715</b>	<b>EMPF</b>	<b>HENDRON, SEAN</b>
<b>O-361</b>	<b>0730</b>	<b>HEQB</b>	<b>DOWDY, THOMAS C</b>
<b>O-368</b>	<b>0715</b>	<b>HEQB</b>	<b>BINGHAM, COLE</b>
<b>O-369</b>	<b>0700</b>	<b>TFLD</b>	<b>GIDDINGS, MARY K</b>
<b>O-410</b>	<b>0845</b>	<b>PIO3</b>	<b>MONTGOMERY, ROBERT</b>

Be sure to use the most current IAP QR Code. Any questions call Demob at 509-661-5376



## **Check In Message**

- Please complete the virtual check-in process via the QR code on the front cover.
- You are not checked in until you provide the following:
  - 1) Red Cards
  - 2) Roster/Manifest
- Please email documents to: [2024.pioneer.checkin@firenet.gov](mailto:2024.pioneer.checkin@firenet.gov)

Any Questions:

Phone: 509-661-5372

Email: [2024.pioneer.checkin@firenet.gov](mailto:2024.pioneer.checkin@firenet.gov)

---

## **Demob Message**

- Fliers complete the “Air Travel Request” via the QR code on the front cover 72 hours prior to flight date.
- Return supplies to the Cache.
- Return radios, antennas, etc., to Communications.
- All contract equipment and vehicles driven in fire area will need to do weed wash.
- Contact Finance about closing out your paperwork.
- Once the above items have been completed, SCAN the QR code on the front cover and complete the demob questions.

Any Questions:

Phone: 509-661-5376

Email: [2024.pioneer.demob@firenet.gov](mailto:2024.pioneer.demob@firenet.gov)





## Human Resource

**Pioneer Fire**  
**July 14, 2024**

### **Drug and Alcohol Guidelines**

The Incident Command Team and host agencies are committed to providing a drug and alcohol free work environment for all incident members.

There is **zero-tolerance** for drug or alcohol violations.

If drugs or alcohol use are observed, please report these incidents immediately to your supervisor or the Human Resource Specialist.

Margaret Dietrich, Human Resource Specialist,  
360-701-3154

**Thought for the day:** “Teamwork is the ability to work together toward a common vision. The ability to direct individual accomplishments toward organizational objectives. It is the fuel that allows common people to attain uncommon results.” — Andrew Carnegie

Union Representation Local 34, Katijo Maher, 360-677-2414  
Katijo.Maher@usda.gov



# Finance Message



Scan this QR code to submit documents to finance.

**IF YOU ARE ON THIS LIST, PLEASE SEE FINANCE:**

- E-77 - David Rains - Missing Shift Ticket
- E-78 - King Hydroseeding - Missing Shift Ticket
- E-172 - Kim Kozelisky - Missing Shift Ticket
- E-285 - Chelan County 9 - Need Agreement
- E-95 - WW Pumping
- O-43 - Beyond the Edge
- O-460 - Best Practice Medical - Missing Shift Ticket
- O-483 - Kocher Chuck - Need Agreement



SUBJECT: Include Key Word **TIME** for Overhead, Crews & Cooperators

SUBJECT: Include Key Word **EQUIPMENT** for Contract Resources

Phone: 484-501-1835

Finance Email: [2024.pioneer.finance@firenet.gov](mailto:2024.pioneer.finance@firenet.gov)

**Please submit the below listed documents to the finance for Check-in, Daily processing and Demob.**

Overhead, Crews & Cooperator Resources	Contract Resources
<ul style="list-style-type: none"> <li>• <b>Check-In:</b> Crew Manifest, Cooperative Agreement (if applicable), AD Hire Letter, Resource Order</li> <li>• <b>Daily:</b> Crew Time Report (CTR), Shift Tickets</li> <li>• <b>Demob:</b> Signed OF288, Final Equipment Use Invoice (Cooperator). If you don't have a way to sign you must come to finance.</li> </ul>	<ul style="list-style-type: none"> <li>• <b>Check-In:</b> Resource Order, Contract/VIPR Agreement (make sure you have your UEI), Pre-Inspection, Crew Manifest</li> <li>• <b>Daily:</b> Shift Tickets, receipts (fuel issues, claims, etc.)</li> <li>• <b>Demob:</b> Contractor Evaluations, Final Shift Tickets and receipt(s) for Addition/Deductions, Post-Inspection, Final Signed Invoices. If you don't have a way to sign you must come to finance</li> </ul>

## REMINDERS

- ★ PLEASE SHOW YOUR LUNCH BREAK
- ★ PLEASE USE MILITARY TIME (0001-2400)
- ★ WHEN CLAIMING HAZARD PAY YOU MUST INCLUDE THE SUPPRESSION ACTION BEING PERFORMED. THIS INCLUDES OPERATIONS WHICH DIRECTLY SUPPORT CONTROL OF FIRE (E.G., ACTIVITIES TO EXTINGUISH THE FIRE, FIREFIGHTING, GROUND SCOUTING, SPOT FIRE PATROLLING, SEARCH AND RESCUE OPERATIONS, AND BACKFIRING).
- ★ CTRS SHOULD BE NAMED AS: CTR\_RO#\_YYMMDD-DD (EX: CTR\_O235\_240605-07)
- ★ SHIFT TICKETS SHOULD BE NAMED AS: ST\_RO#\_YYMMDD-DD (EX: ST\_E5\_240624-27)
- ★ PLEASE MAKE SURE YOU SEE FINANCE AND MEDLS FOR MINOR INJURIES. AGENCY PEOPLE WILL NOT HAVE CLAIMS PAID IF THEY DON'T FOLLOW PROTOCOLS.
- ★ **FOR AN EXPEDIANT DEMOBING PROCESS PLEASE MAKE SURE YOU HAVE NO OUTSTANDING CLAIMS, ALL TIME AND REQUIRED CHECK IN DOCUMENTS HAVE BEEN SUBMITTED BEFORE YOU COME TO FINANCE TO CHECK-OUT.**

# PIONEER FIRE LOGISTICS MESSAGE

	ICP @ MANSON	LUCERNE FOB
Kitchen	Breakfast 0530-0900	Breakfast 0600-0900
	Dinner 1730-2100	Dinner 2030-2130
Lunch/Water/Ice	0500-2100	Pick up with breakfast
Shower	0500-1200	0500-1200
	1400-2200	1400-2200
Adventure Medic Trailer	0530-2200	
Supply	0600-2200	0600-2200
Ordering	0600-2200	
Fuel Tender	0600-2030	
Ground Support	0600-2200	
Weed Wash	0700-1400	
	1600-2000	

**Note:** For resources traveling up-lake, there is no cell service in many areas. It is recommended that you set up WiFi calling on your phone prior to leaving cell service.

## CONTACT INFORMATION

UNIT	EMAIL	PHONE
Communications	(none)	(208) 891-8093
Finance	2024.pioneer.finance@firenet.gov	(484) 501-1835
Ordering	2024.pioneer.ordering@firenet.gov	(484) 501-1821
Ground Support	(none)	Dave (509) 688-7144 Tom (360) 520-5232
Check-In	2024.pioneer.checkin@firenet.gov	(509) 661-5372
Demob	2024.pioneer.demob@firenet.gov	(509) 661-5376
Situation	2024.pioneer.situation@firenet.gov	
Resources	2024.pioneer.resources@firenet.gov	
Planning	2024.pioneer.plans@firenet.gov	
Documentation	2024.pioneer.docs@firenet.gov	



## BOAT DIVISION INFORMATION

Transportation for supplies and personal up and down lake Chelan

**For significant supply or equipment transportation it is preferred requests arrive 48 hours in advance**

\*\* PLEASE USE THE TEMPLATE BELOW TO REQUEST BOAT TRANSPORTATION \*\*

Boat Group Contact Information:

Sam Steinshouer, DIVS, (509) 675-5008 or [sam.steinshouer@dnr.wa.gov](mailto:sam.steinshouer@dnr.wa.gov)

Tosten Kulaas, DIVS (T), (509) 699-6387 or [tkulaas@blm.gov](mailto:tkulaas@blm.gov)

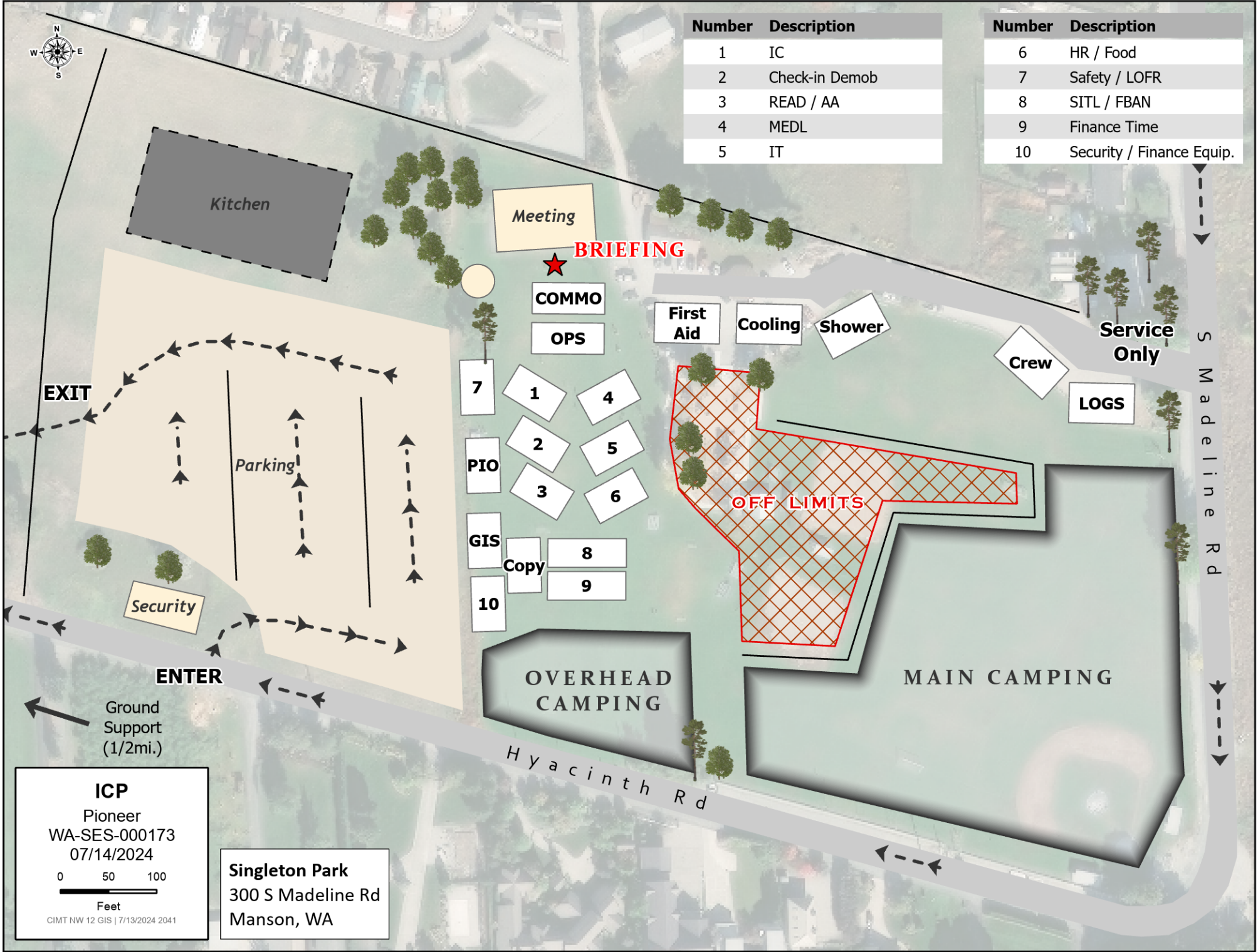
<b>GENERAL MESSAGE (ICS 213) - Fire name: Pioneer</b>		
1. <b>TO:</b> Sam Steinshouer, DIVS / Tosten Kulaas DUVS (T)		
2. <b>FROM:</b> (Name and Position)		
3. <b>Subject:</b> Boat Transportation	DATE:	TIME:
4. <b>Message:</b>		
O# E# or C# _____		
Departure Date _____		
Departure Location (Chelan / Fields Pt. / Lucerne / Stehekin) _____		
Arrival Location (Chelan / Fields Pt. / Lucerne / Stehekin) _____		
Email Address for Confirmation _____		
** If unable to receive email, please note and tickets will be email to either your supervisor or Boat Coordinator		
Phone Number _____		
FERRY TICKETS NEED TO BE SUBMITTED TO BOAT DIVS BY 1600 THE DAY PRIOR TO DESIRED DEPARTURE		
SIGNATURE:		POSITION:

Request #	Description	Capacity (# people)	Night Operations
E-1	TBOT WA-NCP	5	
E-3	TBOT CHELAN CO F&R #7	6	YES
E-12	TBOT CHELAN RANGER DISTRICT	8-10	
E-43	TBOT LK CHELAN LLAMAS & UPTAKE ADVENTURES	8-10	
E-91	TBOT DNR MUD PUPPY	8	YES
E-98	TBOT CHELAN COUNTY SHERIFF	12	
E-120	TBOT PILGRIM LAKE SERVICES	5	
E-121	TBOT BRINNON FIRE	6	YES
E-201	TBOT SEA FALCON	6	
E-202	TBOT RIVER RUNNER	6	YES
E-295	TBOT PUGET PROTECTOR	18-20+	YES
E-296	TBOT FRV #9	16-18	YES
E-297	TBOT PIONEER PROTECTOR	18-20+	



Number	Description
1	IC
2	Check-in Demob
3	READ / AA
4	MEDL
5	IT

Number	Description
6	HR / Food
7	Safety / LOFR
8	SITL / FBAN
9	Finance Time
10	Security / Finance Equip.



**ICP**  
 Pioneer  
 WA-SES-000173  
 07/14/2024  
 0 50 100  
 Feet  
 CIMT NW 12 GIS | 7/13/2024 2041

**Singleton Park**  
 300 S Madeline Rd  
 Manson, WA



**EXIT**

Fuel

Order

Supply

ICE

NAVY

Lunch

Parking

Drivers

**ENTER**

ICP  
(1/2mi.)

S Q u e t i l q u a s o o n R d

SLEEPING

SLEEPING

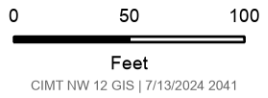
SLEEPING

GSUL

HW

**Ground Support**

Pioneer  
WA-SES-000173  
07/14/2024

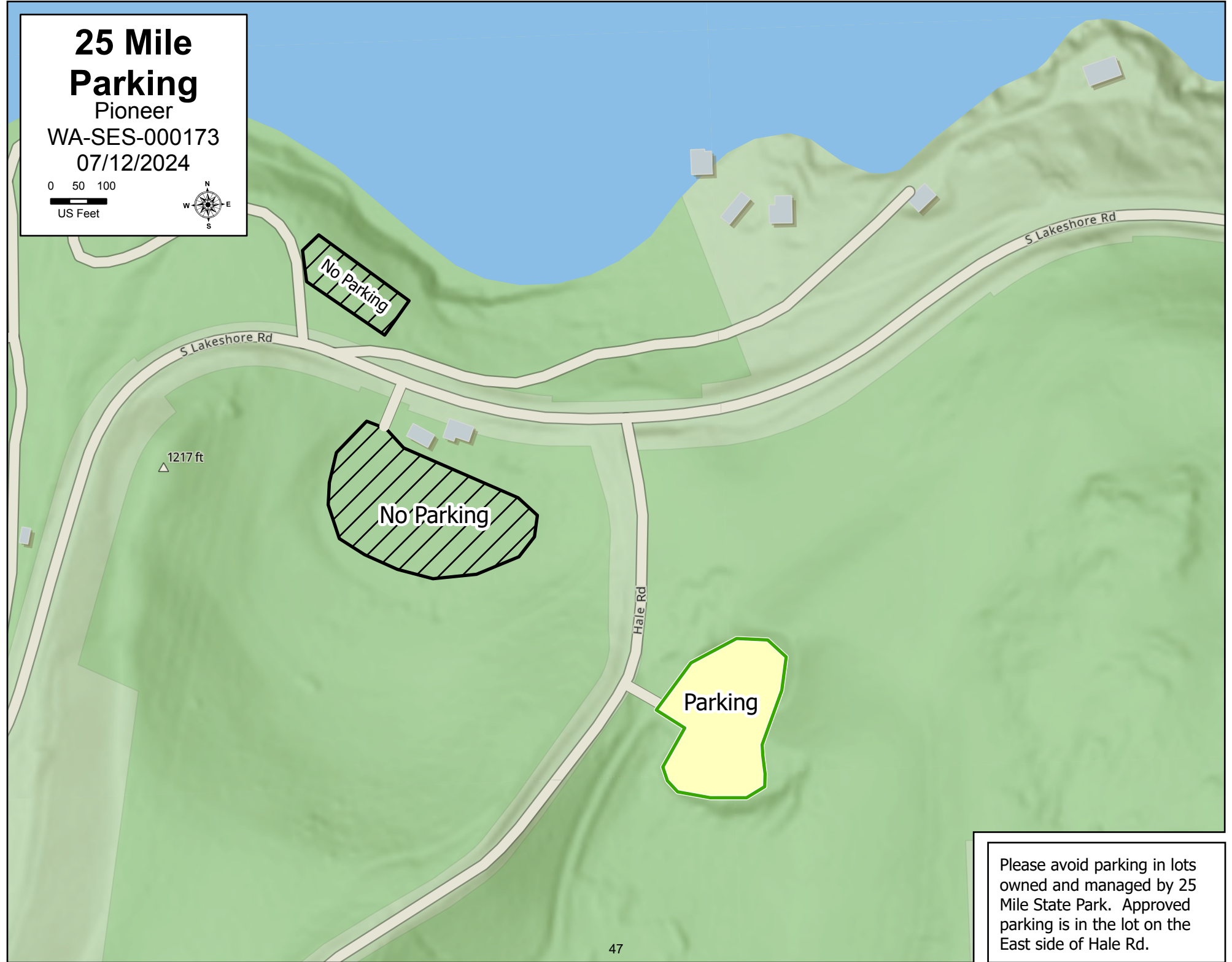


**a.k.a. Quentin Tarantino Village**  
196 S Quetilquasoon Rd  
Manson, WA

# 25 Mile Parking

Pioneer  
WA-SES-000173  
07/12/2024

0 50 100  
US Feet

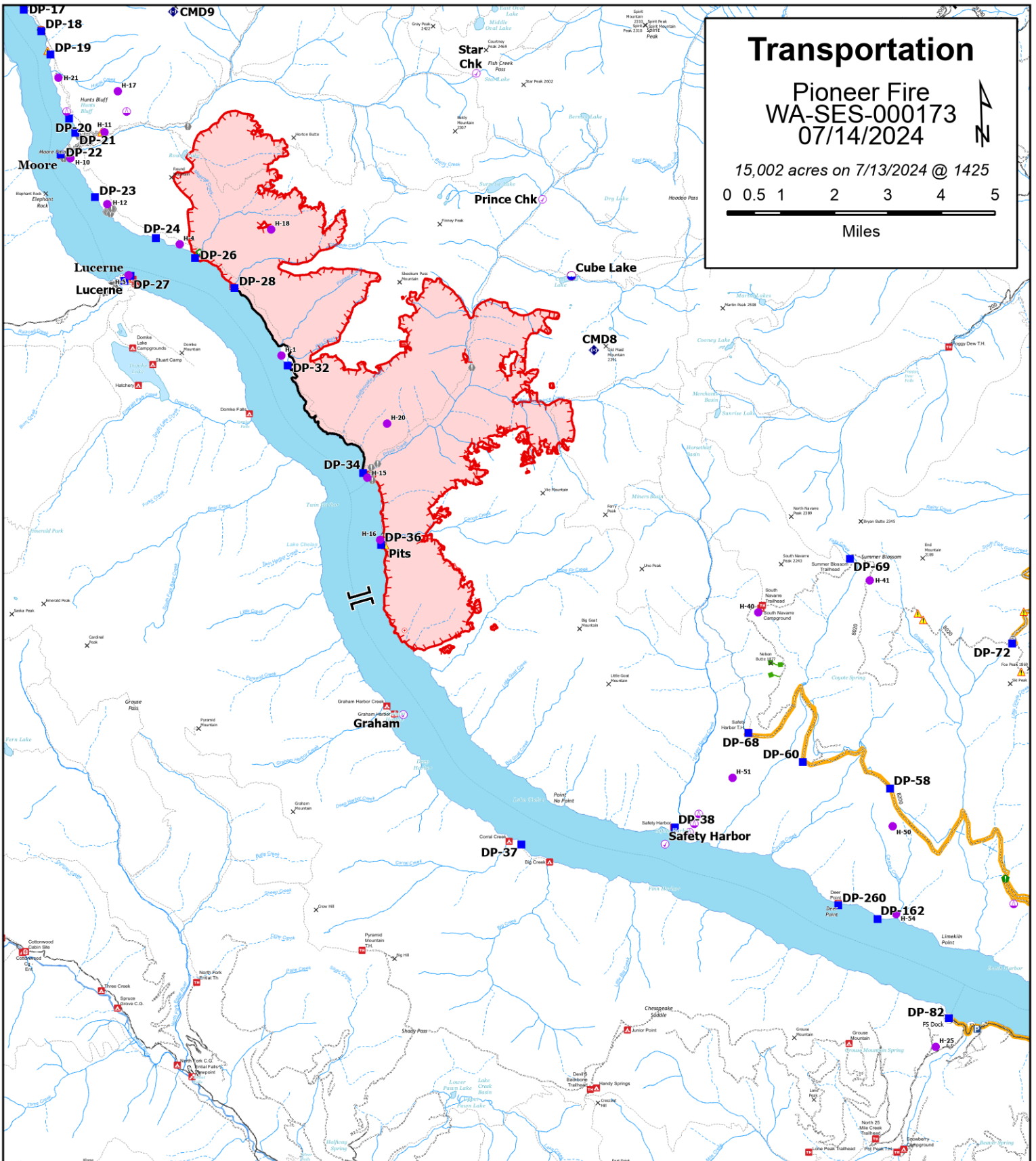
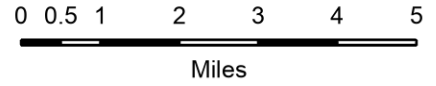


Please avoid parking in lots owned and managed by 25 Mile State Park. Approved parking is in the lot on the East side of Hale Rd.

# Transportation

Pioneer Fire  
WA-SES-000173  
07/14/2024

15,002 acres on 7/13/2024 @ 1425



	Branch Break		Camp		Hazard		Primary Transportation Route
	Aerial Hazard		Hot Spot - Spot Fire		Dip Site		Access Route
	Aviation Check Point		Value at Risk		Campground		Escape Route
	Helispot		Gate		Lookout/Cabin		Contained
	Sling Site		Structure Wrap		Observation Site		Uncontained
	Drop Point		Resource Location		Snowpark		Fire Area
			Repeater		Trailhead		

7/13/2024 2042  
CIMT.NW.12 GIS





<b>UNIT LOG</b>		1. Incident Name	2. Date Prepared	3. Time Prepared
4. Unit Name/Designators		5. Unit Leader (Name and Position)	6. Operational Period	
<b>7. Personnel Roster Assigned</b>				
Name		ICS Position	Home Base	
<b>8. Activity Log</b>				
Time	Major Events			
9. Prepared by (Name and Position)				



## **Pioneer Fire-Manson ICP**

### **In Camp Medical Procedure**

#### **If Red or Yellow**

Yell for help and stay with patient

Provide first aid as appropriate

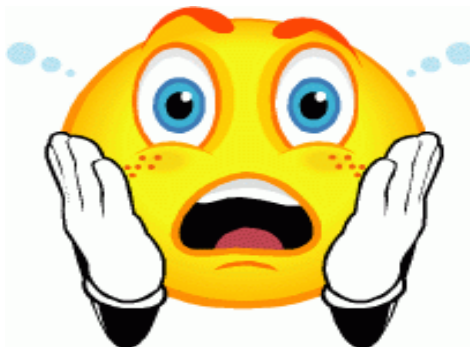
Call 911

Contact Pioneer communications at **208-891-8093** or by radio

#### **If Green**

Go to Adventure Medical Trailer for evaluation and treatment

(Near playground)



# Public Information

**PHOTOS:** Your fireline photos help us build understanding with the public. Community members want to see what you see because you go where others can't safely go. We are looking for any pictures of the fire line, mop-up work, and **fire resources working on the fire line in their PPE**. You can send photos to:

Email: [2024.pioneer@firenet.gov](mailto:2024.pioneer@firenet.gov)  
Text: 509-388-1475

As always, make sure you're wearing all your PPE and conveying a professional, caring, and respectful attitude toward the homes and land in this community. Thanks for helping us out!

**LOST AND FOUND:** We have a few items in the information trailer, just inside the door to the left. If you have lost something, please stop by and see if it has been turned in. If you find something left around camp, you can turn it in to us.

**QUESTIONS FROM THE PUBLIC:** If community members have questions that you do not feel equipped to answer professionally, please give them our fire information line: 541-861-5808.

The public may access information by scanning the QR code below.





# EMERGENCY PLAN INCIDENT WITHIN AN INCIDENT

## ON SCENE INCIDENT COMMANDER

In the event of an accident or medical incident of any size, your primary responsibility is to ENSURE that the victim(s) receive prompt and effective Triage, Treatment, Extrication and Transport.

- **ENSURE THE MEDICAL INCIDENT REPORT IN THE INCIDENT ACTION PLAN IS BEING USED AND FOLLOWED- \*IF DETERMINED TO BE A GREEN, DO NOT DECLARE EMERGENCY TRAFFIC AND ONLY COMPLETE LINE 1-4 ON MIR\*.**
- Conduct size-up of the incident nature of accident, number type of resources involved, latitude and longitude location (DD°MMM.MM format): notify incident communications center and supervisor, request assistance as needed.
- Order and coordinate medical and support response to the accident.
- Evaluate special needs (law enforcement, haz mat, etc.).
- Clear the command frequency if medical emergency, coordinate with incident communications and air attack for air medical transportation needs.
- Preserve and photograph the scene for accident investigation.
- Remain aware of surroundings and the status of the main incident (delegate personnel to monitor the main fire) to ensure safety of medical treatment personnel.
- Until relieved, supervise and manage all personnel involved at the incident scene.

# MEDICAL PLAN (206 WF)

1. Incident/Project Name			2. Operational Period					
<b>Pioneer Fire</b>			Date/Time: <b>07/14/24 0700-2100</b>					
3. Ambulance Services								
Name	Complete Address	Phone	Advanced Life Support (ALS)					
			Yes	No				
Lake Chelan EMS	Chelan, WA	911	X					
Douglas/Okanagan County Fire	Brewster, WA	911		X				
4. Air Ambulance Services								
Name	Phone/Channel	Frequency, Type of Aircraft & Capability						
Life Flight - Brewster	1-800-232-0911 911	VMED 29, Rotor, ALS, 24 hr						
Airlift NW - Wenatchee	1-800-426-2430 911	VMED 29, Rotor, ALS, 24 hr						
Medivac Ship	Command 7,8,9,10,11,12 (Linked)	VMED 29, Rotor, BLS, Daytime 971-762-8575 pioneer helibase 47 51.96N 119 55.56W						
Mount Rainer Short Haul	Command 7,8,9,10,11,12 (Linked)	VMED 29, Rotor, BLS, Daytime, Short Haul						
Snohawk 10 - Snohomish	1-800-258-5990 911	VMED 29, Rotor, ALS, Daytime, Hoist						
Spokane County Hoist - Spokane	1-509-532-8930 911	VMED 29, Rotor, ALS, 24 hr, Hoist Daytime Only						
5. Hospitals								
Name	Degrees Decimal Minutes	Travel Time From Fire		Phone	Helipad		Level of Care	
		Air	Boat		Yes	No		
Lake Chelan Health 110 S. Apple Blossom Drive Chelan WA	Lat: 47° 50' 20 N	30 Min	3 Hr	509-683-2474		X	Level IV Trauma	
	Long: 119° 59' 20 W							
Central Washington Hospital (Confluence Health Central Campus) 1201 S. Miller Wenatchee WA	Lat: 47° 24. 43 N	30 Min	4 Hr	509-433-3115	X		Level III Trauma	
	Long: 120° 19. 28 W							
Harborview Medical Center 325 9 <sup>th</sup> Ave Seattle WA	Lat: 47° 36. 24 N	1.5 Hr	6 Hr	206-744-4025	X		Level I Trauma Burn Center	
	Long: 122° 19. 45 W							
<b>ICP</b>	<b>EMS Responders &amp; Capability:</b>		Diana Braun MEDL/EMTF 509-348-0091		Ben Elkind MEDL(T)/EMTF 503-201-2495		Cass Monroe MEDL(T)/EMTF 509-724-0843	
			Morgan De Marco RN / EMTF / MED TRAILER 973-735-3577		Jarren Bennett EMTF/ MED TRAILER 320-390-2282			
	Equipment Available on Scene:		AED, BLS Kit, OTC Meds, Rx Meds, Urgent Care Facility					
	Medical Emergency Channel:		Command 7, 8, 9, 10, 11 (Linked)					
	ETA for Ambulance to Scene:							
	Air:		NA					
	Ground:		15 Min					
	Approved Heli-Spot:		NA					
Lat:		NA						
Long:		NA						
<b>LUCERNE FOB</b>	<b>EMS Responders &amp; Capability:</b>		Londa Van Kirk MEDL/EMTF (Lucerne FOB) 360-815-7645		MEDIC 9 Benjamin McCall (Air Medical) 360-420-6492		MEDIC 2 Michael Poe (Air Medical) 580-695-9363	
			MEDIC 10 Sean Hendron (Boat Medical) 443-851-2014					
	Equipment Available on Scene:		ALS Kit, AED, O2, OTC meds					
	Medical Emergency Channel:		Command 7, 8, 9, 10, 11 (Linked)					
	ETA for Ambulance to Scene:							
	Air:		2 hr					
	Water/Ground:		3 hr					
	Approved Heli-Spot:							
Lat:		<b>H5 48° 12.1624' N</b>						
Long:		<b>120° 35.4476' W</b>						

## MEDICAL PLAN (206 WF)

<b>BRANCH I/II DIV A</b>	<b>EMS Responders &amp; Capability:</b>	<b>MEDIC 1 Christopher Jackson (DIV A)</b> <b>MEDIC 12 Ethan Biederman (DIV A)</b>	334-707-1468 513-882-2837
	Equipment Available on Scene:	ALS Kit, Monitor/Defib, O2	
	Medical Emergency Channel:	Command 7, 8, 9, 10, 11 (Linked)	
	ETA for Ambulance to Scene:		
	Air:	2 hr	
	Water/Ground:	3 hr	
	Approved Heli-Spots:		
	<b>H1 48° 10.813' N</b> <b>120° 31.925' W</b>	<b>H11 48° 14.492' N</b> <b>120° 35.922' W</b>	<b>H15 48° 08.754' N</b> <b>120° 29.813' W</b>
	<b>H10 48° 14.099' N</b> <b>120° 36.782' W</b>	<b>H12 48° 13.381' N</b> <b>120° 35.919' W</b>	<b>H16 48° 07.744' N</b> <b>120° 29.541' W</b>
	Lat:	NA	
	Long:	NA	

<b>BRANCH I/II Stehekin DIV D</b>	<b>EMS Responders &amp; Capability:</b>	<b>MEDIC 14 Laura Krause (Div D)</b> <b>EMT 5 Dave Repnik (DIV D)</b> <b>Paul Smith MEDL/EMTF (Stehekin FOB)</b> <b>Jed Getman MEDL(T)/AEMF (Stehekin FOB)</b>	360-880-3414 509-881-4771 541-480-9645 541-391-3243
	Equipment Available on Scene:	ALS Kit, Monitor/Defib, O2	
	Medical Emergency Channel:	Command 7, 8, 9, 10, 11 (Linked)	
	ETA for Ambulance to Scene:		
	Air:	2 hr	
	Ground:	3 hr	
	Approved Heli-Spot:		
	Lat:	<b>H14 48° 20.760' N</b>	
Long:	<b>120° 43.242' W</b>		
<b>BRANCH IV DIV S Contingency Roads</b>	<b>EMS Responders &amp; Capability:</b>	<b>AMBO 2 Anna Reynolds+1 (CONTINGENCY)</b> <b>MEDIC 13 Anthony Bylski (CONTINGENCY)</b> <b>MEDIC 7 Joshua Gray (CONTINGENCY)</b> <b>REMS 3 Ron Pearsall +3 (CONTINGENCY)</b> <b>MEDIC 11 Savannah Mclaughlin (DIV S)</b> <b>REMS 1 Rick Bostain + 3 (DIV S)</b> <b>MEDIC 15 Robert Ruszala (DIV S)</b> <b>AMBO 3 Kyle Kemerer +1 (DIV S)</b> <b>RAT 1 Claire Garrett +1 (DIV S)</b>	509-768-5519 248-752-5511 615-499-8461 360-791-6896 435-590-4952 479-422-0462 253-905 4304 650-868-2803 313-952-4679
	Equipment Available on Scene:	ALS Kit, Monitor/Defib, O2, Rescue Gear	
	Medical Emergency Channel:	Command 7, 8, 9, 10, 11, 12 (Linked)	
	ETA for Ambulance to Scene:		
	Air:	2 hr	
	Ground:	3 hr	
	Approved Heli-Spot:	NA	
	Lat:	NA	
	Long:	NA	
	<b>BRANCH V Staging Structure Boat Lake Shore</b>	<b>EMS Responders &amp; Capability:</b>	<b>MEDIC 16 Kelly Max (Lake Shore)</b> <b>MEDIC 17 Trevor Leary (Structure)</b>
Equipment Available on Scene:		ALS Kit, Monitor/Defib, O2, Rescue Gear	
Medical Emergency Channel:		Command 7, 8, 9, 10, 11, 12 (Linked)	
ETA for Ambulance to Scene:			
Air:		2 hr	
Ground:		3 hr	
Approved Heli-Spot:			
Lat:		<b>H25 47° 59.200' N</b>	
Long:	<b>120° 16. 521' W</b>		
<b>TBD</b>	<b>EMS Responders &amp; Capability:</b>	TBD	
	Equipment Available on Scene:		
	Medical Emergency Channel:	Command 7,8,9,10,11 (Linked)	
	ETA for Ambulance to Scene:		
	Air:		
	Ground:		
Approved Heli-Spot:	NA		
Lat:	NA		
Long:	NA		

<b>Prepared By (Medical Unit Leader Trainee)</b>	<b>Date</b>	<b>Reviewed By (Safety Officer)</b>	<b>Date</b>
Ben Elkind	07/13/24	Marshall Brown SOFC	07/13/24
Signature: <i>Ben Elkind</i>		Signature: <i>Marshall Brown</i>	

# MEDICAL PLAN (ICS 206 WF)

Controlled Unclassified Information//Basic

## Medical Incident Report

**FOR A NON-EMERGENCY INCIDENT, WORK THROUGH CHAIN OF COMMAND TO REPORT AND TRANSPORT INJURED PERSONNEL AS NECESSARY.**

**FOR A MEDICAL EMERGENCY: IDENTIFY ON SCENE INCIDENT COMMANDER BY NAME AND POSITION AND ANNOUNCE "MEDICAL EMERGENCY" TO INITIATE RESPONSE FROM IMT COMMUNICATIONS/DISPATCH.**

Use the following items to communicate situation to communications/dispatch.

**1. CONTACT COMMUNICATIONS / DISPATCH (Verify correct frequency prior to starting report)**

*Ex: "Communications, Div. Alpha. Stand-by for Emergency Traffic."*

**2. INCIDENT STATUS: Provide incident summary (including number of patients) and command structure.**

*Ex: "Communications, I have a Red priority patient, unconscious, struck by a falling tree. Requesting air ambulance to Forest Road 1 at (Lat./Long.) This will be the Trout Meadow Medical, IC is TFLD Jones. EMT Smith is providing medical care."*

Severity of Emergency / Transport Priority	<input type="checkbox"/> RED / PRIORITY 1 Life or limb threatening injury or illness. Evacuation need is IMMEDIATE <i>Ex: Unconscious, difficulty breathing, bleeding severely, 2° – 3° burns more than 4 palm sizes, heat stroke, disoriented.</i> <input type="checkbox"/> YELLOW / PRIORITY 2 Serious Injury or illness. Evacuation may be DELAYED if necessary. <i>Ex: Significant trauma, unable to walk, 2° – 3° burns not more than 1-3 palm sizes.</i> <input type="checkbox"/> GREEN / PRIORITY 3 Minor Injury or illness. Non-Emergency transport <i>Ex: Sprains, strains, minor heat-related illness.</i>	
Nature of Injury or Illness & Mechanism of Injury		<i>Brief Summary of Injury or Illness (Ex: Unconscious, Struck by Falling Tree)</i>
Transport Request		<i>Air Ambulance / Short Haul/Hoist Ground Ambulance / Other</i>
Patient Location		<i>Descriptive Location &amp; Lat. / Long. (WGS84)</i>
Incident Name		<i>Geographic Name + "Medical" (Ex: Trout Meadow Medical)</i>
On-Scene Incident Commander		<i>Name of on-scene IC of Incident within an Incident (Ex: TFLD Jones)</i>
Patient Care		<i>Name of Care Provider (Ex: EMT Smith)</i>

**3. INITIAL PATIENT ASSESSMENT: Complete this section for each patient as applicable (start with the most severe patient)**

Patient Assessment: See IRPG page 106

Treatment:

**4. TRANSPORT PLAN:**

Evacuation Location (if different): (Descriptive Location (drop point, intersection, etc.) or Lat. / Long.) Patient's ETA to Evacuation Location:

Helispot / Extraction Site Size and Hazards:

**5. ADDITIONAL RESOURCES / EQUIPMENT NEEDS:**

*Example: Paramedic/EMT, Crews, Immobilization Devices, AED, Oxygen, Trauma Bag, IV/Fluid(s), Splints, Rope rescue, Wheeled litter, HAZMAT, Extrication*

**6. COMMUNICATIONS: Identify State Air/Ground EMS Frequencies and Hospital Contacts as applicable**

Function	Channel Name/Number	Receive (RX)	Tone/NAC *	Transmit (TX)	Tone/NAC *
COMMAND					
AIR-TO-GRND					
TACTICAL					

**7. CONTINGENCY: Considerations: If primary options fail, what actions can be implemented in conjunction with primary evacuation method? Be thinking ahead.**

**8. ADDITIONAL INFORMATION: Updates/Changes, etc.**

**REMEMBER:** Confirm ETA's of resources ordered. Act according to your level of training. Be Alert. Keep Calm. Think Clearly. Act Decisively.

Controlled Unclassified Information//Basic