



# INCIDENT ACTION PLAN

# PIONEER FIRE

Tuesday, July 16<sup>th</sup>, 2024  
Operational Period 0700-2100

**WA-SES-000173**  
USFS: PN RZ79 (1522)  
DOI: RZ79  
WA DNR: 221-LDW




Maps, IAP,  
Finance &  
Briefing  
Link







## ORGANIZATION ASSIGNMENT LIST (ICS 203)

<b>1. Incident Name:</b>		<b>2. Operational Period:</b> 0700-2100	
PIONEER		Date/Time From: 07/16/2024 0700	TUE
		Date/Time To: 07/16/2024 2100	TUE
<b>3. Incident Commander(s) and Command Staff:</b>			
IC/UC	JEFF DIMKE	MEDICAL UNIT	DIANA BRAUN; LONDA VAN KIRK; BEN ELKIND(T)
DEPUTY	BOB SHINDELAR		CASS JACKSON(T); JED GETMAN(T)
SAFETY OFFICER	TAIJA CORSO; JUSTIN RANDALL (T)	SECURITY UNIT	RON TAYLOR
INFORMATION OFFICER	JOEL BRUMM; HEATHER APPELHOF	FOOD UNIT	KAREN HAUTER DEBBY BERDINE; STEVE BALES (T)
LIAISON OFFICER	JEFF SEVIGNEY; JOHN JOHNSON (T) JON MEIER	<b>7. Operations Section:</b>	
HUMAN RESOURCE SPECIALIST	MARGARET DIETRICH	OPS SECTION CHIEF	AARON ROWE, LONNIE NEWTON (T)
		PLANNING OPS SECTION CHIEF	KURT RANTA
		STRATEGIC OPS SECTION CHIEF	TONY ENGEL, MIKE DAVIS (T)
<b>4. Agency/Organization Representative(s):</b>			
<b>Agency/Organization</b>	<b>Name</b>		
USFS OKA/WEN AGENCY ADMIN	JACOB WINN; PAUL WILLARD (T) BENJAMIN GOODIN (T)	DIVISION/GROUP	BOAT SAM STEINSHOUER, TODD DORMAIER TOSTEN KULAAS (T)
DNR AGENCY ADMIN	LARRY LEACH; WYATT LEIGHTON		
NPS AGENCY ADMIN	DON STRIKER	<b>Branch</b>	<b>I/II</b>
NPS AGENCY REP	DENISE SHULTZ	BRANCH DIRECTOR	JESSE BOHNSACK, CODY ACORD (T)
USFS LEAD READ	BRIGITTE RANNE	DIVISION/GROUP	A SHAWN OTTO, CHRIS RAMISKEY (T)
NPS LEAD READ	JACK OELFKE	DIVISION/GROUP	D BRETT JOHNSON, PAUL KIMBALL (T)
<b>5. Planning Section:</b>			
CHIEF	HOWARD JOHNSON; JILL JOHNSON	DIVISION/GROUP	LAKE SHORE JON STONELAKE, NICK WIGLE (T)
RESOURCES UNIT	JENNIFER NORTON; CHRIS VOLK		
SITUATION UNIT	MATT PROVENCHER; STEPHEN SEWELL (T)	<b>Branch</b>	<b>IV</b>
DOCUMENTATION UNIT	DEIDRE SMITH	BRANCH DIRECTOR	TIMOTHY BARNETT
DEMOBILIZATION UNIT	MIKE HESTON	DIVISION/GROUP	S MATT KENNEDY, JULIUS JACOBSEN (T)
FIRE BEHAVIOR ANALYST	STEVE ZIEL	DIVISION/GROUP	CONTINGENCY HEIDI SPRENGER, ROY BOOTS (T)
GIS SPECIALIST	SHAWN BUSHNELL; MIKE TONKEL DEAN RAFTIS	DIVISION/GROUP	ROADS FIDEL VERDUZCO, ERIN SPRINGER (T)
TECHNOLOGY SUPPORT SPECIALIST	GEORGE JENKINS; LIBBY EVERETT (T) JUSTIN LEACH (T)	DIVISION/GROUP	STRUCTURE/IA SCOTT CLEAVE
INCIDENT METEOROLOGIST	BOB TOBIN	DIVISION/GROUP	STAGING MIKE EMERICK
AIR RESOURCE ADVISOR	TOM PIERCE	<b>7b. Air Operations Branch:</b>	
		AIR OPS BRANCH DIRECTOR	PAUL BALFOUR; KELLY HEDGEPEETH(T)
		AIR SUPPORT SUPERVISOR	TIM LYDA
<b>6. Logistics Section:</b>			
CHIEF	KEVIN HAUGHTON; THAD FRATER (T) WHIT SPENCER; BRIAN MCGINLEY; MIKE POST	<b>8. Finance/Administration Section:</b>	
SUPPLY UNIT	JOHN KAUPA	CHIEF	CHRISTINA GOEBEL; STEVE CROW (T)
FACILITIES UNIT	KAREN ZIRKLE MIKE POST; JOHN DREYER	TIME UNIT	CHERI FULLER; LARCI MILLER (T)
GROUND SUPPORT UNIT	DAVE HARSH TOM FORTIN; HEATH KESSI (T)	PROCUREMENT UNIT	TODD POWELL; PETER BIDIGARE (T)
COMMUNICATIONS UNIT	MISSY PARKER; CHARLES BARNES	COST UNIT	KAY HIGH
		INC CONTRACT PROJ INSP	ROB HECHINGER
<b>9. Prepared By:</b>	<b>Name:</b> JILL JOHNSON	<b>Position/Title:</b> PSCC	<b>Signature:</b> 
ICS 203	IAP Page	<b>Date/Time:</b> 07/15/2024 2000	

## ***Fire Weather Forecast***

**FORECAST NO:** 34

**PREDICTION FOR:** 24 Hr Shift

**SHIFT DATE:** Tuesday 7/16/2024

**TIME AND DATE ISSUED:** 7/15/2024 1900 hrs

**INCIDENT:** Pioneer Fire

**SIGNED:** *Bob Tobin*

Incident Meteorologist

---

### **Discussion:**

#### **\*\*\*Fire Weather Watch for Dry thunderstorms on Wednesday\*\*\***

Changes are coming to the forecast area the remainder of the week. An upper-level weather disturbance will move off the Northwest coast on Tuesday. This will put the region in a south to southwesterly flow, that will remain over the region through Saturday. Temperatures will remain on the warm side of normal. Typically, southwest flow will increase the moisture moving into the region. A little more vigorous disturbance will move along the Cascades Tuesday night and Wednesday, then across northeast Washington Wednesday evening. This will result in a chance of late afternoon and evening thunderstorms near the burn area, and then across northeast WA. Little if any rain is expected. As such. A Fire Weather Watch will be hoisted to cover dry lightning. Temperatures will remain well above normal, but relative humidity should begin to creep up a little through the week.

### **WEATHER FORECAST FOR TODAY:**

**SKY/WEATHER:** Mostly sunny and hot. Smoke in the morning, mixing out in the afternoon.

**MAX TEMPERATURE:** 92 to 97 valleys/mid-slopes. 72 to 80 around 5000 feet.

**MIN RH:** 12 to 16 percent valleys/mid-slopes. 20 to 25 percent ridges.

#### **20 FT WINDS:**

**Lower Valleys:** Down lake, down canyon 4 to 7 mph through 1000 then southeast to southwest 5 to 10 mph gusting to 12 mph.

**Mid-slopes and Ridges:** Southeast to south 8 to 12 mph gusting to 15 mph.

**HAINES INDEX:** 5 Moderate.

**TRANSPORT WINDS:** Southeast 10-12 mph.

**INVERSION:** Moderate to strong low level inversion lifting by 1000. Mixing Height 9000 ft by 1200.

---

### **TONIGHT:**

**SKY/WEATHER:** Mostly Clear. Smoke will settle in valleys around lake Chelan and in drainages near the fire.

**MIN TEMPERATURE:** 68 to 74 valleys/mid-slopes. 60 to 69 around 5000 feet.

**MAX RH:** 45 to 52 percent valleys/mid-slopes. 38 to 44 percent ridges around 5000 feet.

#### **20 FT WINDS:**

**Valleys/Lower Slopes:** Northwest-north down the lake 8 to 12 mph in the evening gusting to 20 mph, especially after midnight.

**Mid-Slopes and Ridges:** Southwest to west 10 to 12 mph gusting to 15 mph.

**INVERSION:** Developing after 2000 hrs to near 1000 ft. Thermal belt activity likely at the top of the inversion.

### **Wednesday:**

**SKY/WEATHER:** Partly to mostly cloudy. A slight chance of thunderstorms.

**MAX TEMPERATURE:** 90 to 95 valleys/mid-slopes. 75 to 82 around 5000 feet.

**MIN RH:** 15 to 20 percent valleys/mid-slopes. 18 to 24 percent ridges.

#### **20 FT WINDS:**

**Lower Valleys:** Southeast to south 5 to 10 mph gusting to 15 mph.

**Mid-slopes and Ridges:** Southwest to West 10 to 12 mph gusting to 20 mph.

**HAINES INDEX:** 4 Moderate.

**TRANSPORT WINDS:** SWW 10 to 14 mph.

---

**Boating concerns Tuesday** Up-lake winds will develop after 1000. Expect bumpy conditions across the lake in the afternoon. Wave heights to 2 feet have been observed in similar wind conditions.

**Aviation concerns Monday:** Temperature near 25C at 4000 feet for load calcs. Thermal turbulence likely near any convection from afternoon thunderstorms.

Weather observations can be texted to 509-844-7003 or emailed to [bubba57@comcast.net](mailto:bubba57@comcast.net).



## Fire Behavior Forecast # 35

<b>Name of Incident:</b> <b>Pioneer</b>	<b>Administrative Unit:</b> SE Region DNR / Okanogan-Wenatchee NF
<b>Date &amp; Time Issued:</b> July 15, 2024 @ 1900	<b>Operational Period:</b> <u>DAY</u> 07/16/2024
<b>FBAN:</b> Steve Ziel	<b>Signed:</b> /s/ <i>Steve Ziel</i>

***Change is in the wind (literally) to a SW/SE flow. Cumulative effects of summer season drought with hot/dry weather brings another elevated fire behavior day. Rapid fire spread will occur with wind and/or slope alignment. Expect very active burning conditions between 1200 to 2000 hours. Live fuels are starting to contribute to fire intensity on mid and lower slopes; fire spread rate is being dominated by fine dead fuels and cured grasses. Lake effect winds (up/down lake) dominate lower and mid slopes; the fire is on a dry S/SW aspect with steep side drainages that provide strong upslope winds. Wind/slope alignment and/or lake wind will influence and accelerate fire rate of spread and direction. Monitor the change in wind direction for new wind/slope alignments.***

**Weather Summary**  
\*\*See attached Fire Weather Forecast\*\*

### Fire Behavior Summary

***Fuels in the fire area*** are composed of a mosaic of *Timber Litter, Grass, Timber with Understory, and Grass/Shrub* models. The fire is burning in the Rex Creek (2001) fire footprint. Primary tree species include mixed sizes and densities of Douglas Fir and Ponderosa Pine. Local timber litter is compact to fluffy. Brush and understory species include ceanothus, hardwoods, and dog-hair conifer reproduction. **Numerous snags and heavy downed fuel loadings are common throughout all areas.** Live woody and herbaceous fuels are becoming available to contribute to fire intensity, mid slopes and lower. Grasses are partially to fully cured depending on elevation and aspect. Fuel conditions vary by aspect, previous fire history, and elevation. Most N and E aspects include 23-year-old brush and conifer trees with a heavy dead and down component beneath. Jackstraw fallen dead trees may be covered by brush.

***Expect fire behavior to include areas of sustained head fire runs, aggressive flanking, and backing (with rollout) with wind/slope alignment. In light fuels (grass, pine needle litter) expect dangerous rates of fire spread. Heavy fuels are retaining heat serving as ignition sources for surrounding fuels. Higher elevation (>6500') north and east aspects grasses are partially cured. Very active fire behavior is expected for next several days. Slope reversals will produce rapid rates of spread and high intensity burning when it occurs. Expect lee-side spotting as fire reaches ridgelines. Fuel concentrations will generate high intensity fire behavior with torching. Expect group torching with spotting to <.5 mi. where sufficient timber fuels are present.***

***\* FFM= 3%-5%, 1000hr. moisture=10%, Woody fuels 120%, Probability of Ignition—80-90%, Max Spotting 0.5 miles (or more with significant column development).***

Fuel Type	Rate of Spread	Flame Length	Backing ROS	Spot Size in 1-hour
...If your work area includes -	(CH/HR = FPM)	Feet	FPM	Acres
GR2 - Moderate load grass/shrub	45 - 50	4 - 5	2	80
SH2 - Moderate load shrub	3 - 5	2-3	< 1	3
TU5 - High load Timber w/ Understory	12 - 14	8- 9 (torching)	2	5
TL8 - Long needle timber litter	10-12	4- 6	2	6+

### **Specific Assignments:**

**Div. A** – The fire will continue spread east on both sides of Fish Creek with wrap around into E. Fk. Fish Cr. Expect finger runs.

**Div. S** – Fire in Prince Cr. is spreading on both sides upstream to Middle Fk. Prince Cr. and toward Cub Lake. Finger runs likely.

**Lakeshore Protection Group** – **Monitor up/down lake winds closely.** Expect rapid spread in fine fuels if fire becomes active on the lower slopes between Moore Point and Stehekin, and down lake to Nelson Ridge. Expect high intensity fire behavior in timber fuels

**Other Br./Grp.** – Should not be affected by fire activity during the burn period. Monitor smoke direction and amount. SW/SE winds.

**\*IA** – Expect rapid rates of spread in light fuels. Ensure good size-up before engaging and base tactics on current as well as expected fire behavior. Review potential ROS and FL by fuel type.

**Air Operations:** WIND from SW/SE, heavy downwind smoke in drainages and aloft. Complex terrain, watch for lee-side turbulence.

### **Safety**

**Changing conditions require re-evaluation of actions. If the conditions are changing ask “how fast, how much, when, where”. Consider the effects of change on your planned action – may require adjusting your actions to mitigate changing conditions. Verify forecast values.... consider “will our situation get better or worse, will it get worse before it gets better?” \*ALWAYS PLAN FOR AND EXPECT CHANGE.**

*\*Today's Fire Behavior Forecast contains 756 words written for your situational awareness.*



# SAFETY MESSAGE

16 July 2024

**INCIDENT: Pioneer**

**OPERATIONAL PERIOD: 0700-2100**

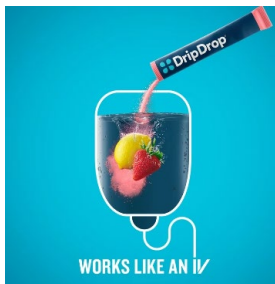
## DEHYDRATION

**75% of Americans are chronically dehydrated.** Dehydration is loss of water and important blood salts like potassium (K+) and sodium (Na+). Vital organs like the kidneys, brain, and heart can't function without a required minimum of water and salt. Fluid losses up to 5% are considered mild; up to 10% are considered moderate; and up to 15% are considered severe. Severe dehydration can result in cardiovascular collapse and death if not treated quickly. With heavy work like fire suppression your body loses at least 16 ounces of water an hour. **Dehydration is easily preventable!**

## HYDRATION

**How to Hydrate:** Consume water throughout entire operational shift. That means when you wake up and begin your day you are drinking water (at briefings), on the fireline while working you sip / drink water constantly (no less than one gallon), off the fireline in evening you continue to drink water to replenish what was lost through day of hard work and help prepare your body for the next shift.

Maintaining a good diet and eating well with the occasional sports drink will help you stay hydrated and replenish needed blood salts.



**SAFETY OFFICERS: Taija Corso, Marshall Brown, Justin Randall (t)**

<b>Risk Assessment Worksheet</b>		1. Incident Name: <b>PIONEER FIRE</b>			2. Location: <b>WA-SES-000173</b>		
3. Leaders Intent /Specific Objective: Risk Management tools will be used to evaluate tactics in order to provide for firefighter and public safety while implementing actions that have a high probability of success. <b>THIS IS NOT AN EXHAUSTIVE LIST OF RISKS OR CONTROL OPTIONS</b>		4. Prepared By: <b>Justin Randall/Marshall Brown</b>			5. Date Prepared: <b>Monday, July 15, 2024</b>		
Signature: <i>Marshall Brown</i>		Title:					

Identify Hazards		Assess Hazards			Risk Control Options	Residual Risk			Decision	Implement
7. Task	8. Hazard	9. Hazard Probability	10. Severity	11. RAC	12. Identify hazard mitigations & abatement measures (press [alt + enter] to add a line)	13. Hazard Probability	14. Severity	15. RAC	16. Risk Acceptable?	17. Hazard Control Assigned to:
Operational tasks	Medical Treatment and Transport Delay	Almost Certain	Catastrophic	Extremely High	Staff Medical personnel that is commensurate with the operational assignment. Coordination with the MEDL, BOAT Group and AOBD is essential. Detailed procedures are in place for medical transportation. If boat and/or air resources are unavailable, medical personnel is unavailable, and Risk Management matrix is unacceptable; consider alternative operational tactics and strategies. Use P.A.C.E. model for transportation planning utilizing the ICS206 medical plan. Identify helispots and possible. LEADERS INTENT: ANY WEATHER PARAMETERS OR OPERATIONAL CHANGES THAT WOULD AFFECT TRANSPORT WILL BE COMMUNICATED TO INCIDENT PERSONNEL FOR OPERATIONAL REASSESSMENT.	Possible	Critical	High	YES	All Incident Personnel
Operational tasks	Hit by Hazards	Possible	Catastrophic	Extremely High	Maintain sound risk management processes and modify tactics and strategy to limit personnel exposure in areas that have probability for roll out and falling material.	Possible	Critical	High	YES	All Incident Personnel
Perimeter Control	Increased Fire Behavior-entrapment & turnover	Likely	Critical	Extremely High	With red flag warnings, drying of fuels, wind, and rollout potential anticipate increase in fire behavior and adjust tactics and strategies using the risk management process.	Possible	Critical	High	YES	All Operations Personnel
Road maintenance	Deteriorating road surfaces-Vehicle collision or sliding off road, personal injury. Increased fire behavior-entrapment.	Likely	Critical	Extremely High	Gravel ordered for the 8200 road. Use caution when driving in powder conditions. Minimize traffic where possible.	Possible	Critical	High		Road Group
Ground transportation (Hiking, UTV, Driving)	Motor Vehicle Accident-Struck by/Striking Object/Loss of vehicle control. 8200 Road system deteriorating from use and difficult to drive.	Possible	Critical	High	Hiking: Pace and situational awareness. UTV: Adhere to Agency UTV Policy Driving: Drive defensively, Chelan July traffic will be busy. Road closures do not have security assigned. Gravel ordered to resurface road. Drive cautiously until road repaired.	Possible	Critical	High	YES	All Incident Personnel
Transportation - Boat	Boat sinking from striking an object or capsizing due to high winds or waves- people drowning. Poker run 7-13-15.	Unlikely	Critical	Moderate	Boat coordinators assigned. Qualified agency and commercial boat captains. PAX safety briefings and pax wear life jackets. Multi pax on board so MOB noticed immediately. Boating plan and float following. Wind speed advisories. Sheriff directs boats to opposite side of lake and participants are cooperative and knowledgeable. Will rendezvous for briefing.	Rare	Moderate	Low		
Helicopter Operations	Aircraft Mishap - General	Unlikely	Catastrophic	High	VALIDATE THAT MISSIONS ARE ESSENTIAL AND MEET INCIDENT OBJECTIVES. TFR IS IN PLACE, IF YOU SEE INTRUSION COMMUNICATE IMMEDIATELY.	Rare	Catastrophic	Moderate	YES	All Operational Personnel
Interactions with Public Safety/Public Relations, Forest closure order growth	Personal Injury/Damage to Public Relations, no roads guards.	Possible	Moderate	Moderate	Travel with the expectation of public on roads and trails. Contact Team Law Enforcement, Safety Officers, and Security when necessary. Disengage from any confrontations.	Possible	Moderate	Moderate	YES	All Incident Personnel
Initial Attack	Unknown terrain, cooperators, leadership added to existing fire and ambient conditions. Sense of urgency & confusion.	Likely	Critical	Extremely High	Incident IA resources pre-designated. Briefed at incident and dispatched with incident leadership. IA frequencies programmed into radios.	Possible	Critical	High	YES	All Operations Personnel
All Incident Operational Tasks	Medical - Heat Related Illness/Wildlife	Likely	Moderate	High	Identifying heat related illness early, appropriate pace in extreme temps, shade, fluid intake in appropriate proportions. Discussions/Awareness on wildlife/snakes.	Unlikely	Critical	Moderate	YES	All Personnel



## PIONEER NW TEAM 12 INITIAL ATTACK RESPONSE PLAN

Per the Pioneer Fire Delegation of Authority, NW Team 12 has responsibility for Initial Attack response within the Pioneer Fire TFR. Additionally, the team will support initial attack efforts surrounding the TFR as requested. This includes ground and air resources. Most of the TFR consists of Forest Service and Park Service land with small parcels of private inholdings. Additional land ownership adjacent to the TFR consists of BLM, State, and private land.

### Pioneer Initial Attack Response Plan:

- IA fires reported near or within the TFR will be reported through CWICC.
- Appropriate agency Duty Officer will be informed of the fire. If the fire is within the TFR and suppression actions are necessary, CWICC will contact Field Operations by phone or radio and provide response instructions. The duty officer is responsible for notifying the agency administrator of decision. Order of contact:
  - CWICC will contact Field Ops Aaron Rowe at 509-679-5378 or Field Ops trainee Lonnie Newton at 208-501-4019
  - If neither Field Ops can be reached by phone, call Field Ops on radio. If not reachable on radio, contact Pioneer Communications and have them relay message.
  - If no contact can be established with Field Ops, contact Planning Ops Kurt Ranta at 360-708-5227 or Planning Ops trainee Rob Poyner at 425-512-2621.
- Air Operations and/or Division/Group Supervisor assigned to the division/group nearest the IA location will be notified by Field Operations and respond with assigned resources.
- Local forest or state Initial Attack frequencies will be used and provided in the IAP Communications Plan.
- The same processes will be used for fires outside of TFR if assistance from Pioneer Fire resources is requested.
- Any air resources used on initial attack or support missions other than Pioneer will be on a lend/lease arrangement.
- All resources in Structure/IA Group are available for Initial Attack response. Other divisions/groups may have resources also identified for IA response. Number and type of resources mobilized to a new start will be determined by anticipated or requested need. Resources will be led by overhead at the Strike Team Leader level or above.

### Process as written in 204 comments:

- All resources in Structure/IA Group are available for Initial Attack response per the Pioneer Fire IA Response Plan. Number and type of resources mobilized to a new start will be determined by anticipated or requested need. Resources will be led by overhead at the Strike Team Leader level or above.
  - If Initial Attack occurs within the TFR, Wenatchee Dispatch will coordinate with appropriate duty officer and contact Field Ops for response.
  - Field Operations will contact the Structure/IA Group Supervisor and/or Air Operations to coordinate response to new start.
  - Local forest Initial Attack frequencies will be used and provided in the IAP Communications Plan
  - The same process will be used for fires outside of TFR if assistance from Pioneer fire resources is requested.

**Division/Group Assignment List (ICS 204 WF)**  
**Controlled Unclassified Information//Basic**

<b>1. Incident Name:</b>				<b>3.</b>		
PIONEER				Branch:	Division/Group:	
<b>2. Operational Period: 0700-2100</b>						
Date/Time From: 07/16/2024 0700 TUE		Date/Time To: 07/16/2024 2100 TUE		I/II	A	
<b>4. Operations Personnel</b>						
<b>OPERATIONS CHIEF</b>		AARON ROWE, LONNIE NEWTON (T)		<b>BRANCH DIRECTOR</b>		JESSE BOHNSACK, CODY ACORD (T)
<b>DIVISION/GROUP SUPERVISOR</b>		SHAWN OTTO, CHRIS RAMISKEY (T)		<b>AIR OPS BRANCH DIRECTOR</b>		PAUL BALFOUR
<b>5. Resources Assigned this Period</b>						
Strike Team / Task Force / Resource Designator	LWD	Leader	Number Persons	Drop Off PT./Time	Pick Up PT./Time	
O-352 SOFC	07/22	KRIS CRODDY	1	LUCERNE/0700	LUCERNE/2100	
O-492 SOFC	07/24	LEA WOFFORD	1	LUCERNE/0700	LUCERNE/2100	
O-516 TFLD	07/26	SHANNON CLARK	1	LUCERNE/0700	LUCERNE/2100	
O-447 TFLD (T)	07/22	EHREN E PHILLIPS	1	LUCERNE/0700	LUCERNE/2100	
A-1.5 SHLR	07/23	BRANDON MCSPARIN	1	LUCERNE/0700	LUCERNE/2100	
A-1.15 HECM	07/23	MAKENZIE HAYMAKER	1	LUCERNE/0700	LUCERNE/2100	
O-409 HECM	07/22	RUGER BIXLER (T)	1	LUCERNE/0700	LUCERNE/2100	
C-30 CRW1 ENTIAT IHC	07/19	DAN PICKARD	23	LUCERNE/0700	LUCERNE/2100	
C-31 CRW1 LA GRANDE IHC	07/19	JUAN JESUS ELGUEZABAL	23	DP 22 MOORE POINT/0700	DP 22 MOORE POINT/2100	
C-36 CRW1 ZIGZAG IHC	07/20	SANDRA SPERRY	25	DP 22 MOORE POINT/0700	DP 22 MOORE POINT/2100	
C-50 CR2I GRAYBACK FORESTRY	07/21	GAVIN SAEMAN	20	LUCERNE/0700	LUCERNE/2100	
C-51 CR2I PATRICK ENVIRONMENTAL 18A	07/27	BENJAMIN LEWIS	20	LUCERNE/0700	LUCERNE/2100	
A-78 UAR3 UR31	07/22	PATRICK CLARK	4	LUCERNE/0700	LUCERNE/2100	
O-359 MEDIC 12	07/23	ETHAN BIEDERMAN	1	DP 22 MOORE POINT/0700	DP 22 MOORE POINT/2100	
O-533 MEDIC 1	07/25	CHRISTOPHER JACKSON	1	LUCERNE/0700	LUCERNE/2100	
O-535 MEDIC 2	07/25	MICHEAL POE	1	LUCERNE/0700	LUCERNE/2100	
<b>8. Division/Group Communication Summary</b>						
Function	Channel	RX Frequency N/W	RX Tone/NAC	TX Frequency N/W	TX Tone/NAC	Mode
COMMAND	8	169.5375	123.0	164.7125	123.0	A
COMMAND	9	170.4500	123.0	168.1000	123.0	A
TACTICAL	2	168.2000	123.0	168.2000	123.0	A
AIR TO GROUND	13	169.1500	000.0	169.1500	000.0	A
AIR TO GROUND	14	168.4000	000.0	168.4000	000.0	A
<b>9. Prepared By (Resource Unit Leader)</b>		<b>Approved By (Planning Section Chief)</b>		<b>Date</b>	<b>Time</b>	
JENNIFER NORTON		JILL JOHNSON		07/15/2024	2100	

## Division/Group Assignment List (ICS 204 WF)

Controlled Unclassified Information//Basic

<b>1. Incident Name:</b>				<b>3.</b>			
PIONEER				<b>Branch:</b>  I/II		<b>Division/Group:</b>  A	
<b>2. Operational Period:</b> 0700-2100							
Date/Time From: 07/16/2024 0700 TUE		Date/Time To: 07/16/2024 2100 TUE					
<b>4. Operations Personnel</b>							
<b>OPERATIONS CHIEF</b>		AARON ROWE, LONNIE NEWTON (T)		<b>BRANCH DIRECTOR</b>		JESSE BOHNSACK, CODY ACORD (T)	
<b>DIVISION/GROUP SUPERVISOR</b>		SHAWN OTTO, CHRIS RAMISKEY (T)		<b>AIR OPS BRANCH DIRECTOR</b>		PAUL BALFOUR	
<b>5. Resources Assigned this Period</b>							
Strike Team / Task Force / Resource Designator		LWD	Leader	Number Persons	Drop Off PT./Time	Pick Up PT./Time	
E-84 VUTV KIRCHER AND SHERMAN					LUCERNE/0700	LUCERNE/2100	
E-85 VUTV KIRCHER AND SHERMAN					LUCERNE/0700	LUCERNE/2100	
<b>6. Control Operations/Work Assignments:</b>							
<p><b>TASK:</b> Implement point protection on private and federal infrastructure. Monitor fire growth in Fish Creek and look for opportunities to limit fire spread towards Stehekin. Monitor fire progression north and west as fire progresses across Round Mountain.</p> <p><b>PURPOSE:</b> To slow fire progression, minimize fire intensity around critical values, provide time for suppression tactics, and prevent fire spread towards Stehekin.</p> <p><b>END STATE:</b> Fire impacts to critical values, including private inholdings, federal infrastructure and Stehekin are minimized.</p>							
<b>7. Special Instructions:</b>							
<ul style="list-style-type: none"> <li>-In large or long term spike camps use helicopters, boats, or pack stock to deliver portable backcountry latrines and remove human waste if necessary. If camp does not have adequate pack, boat, or air support for human waste management, establish community latrines well away from water sources and common areas. Use human waste bags, if necessary.</li> <li>-Minimize ground disturbance on the Moore Point and Meadow Creek alluvial fans in order to protect sensitive resources.</li> <li>-Hose used from Prince Creek to Moore Pt: contaminated with invasive plants. Do not reuse. Backhaul to Moore Pt DP22 and store in "infested hose" area at Moore Pt until decontaminated.</li> <li>-All equipment, including UTVs, must be thoroughly rinsed before being backhauled from Moore Point.</li> <li>-Ensure hazard mitigations and IWI protocols are in place before taking action.</li> <li>-** Denotes available for Initial Attack</li> </ul>							
<b>8. Division/Group Communication Summary</b>							
Function	Channel	RX Frequency N/W	RX Tone/NAC	TX Frequency N/W	TX Tone/NAC	Mode	
COMMAND	8	169.5375	123.0	164.7125	123.0	A	
COMMAND	9	170.4500	123.0	168.1000	123.0	A	
TACTICAL	2	168.2000	123.0	168.2000	123.0	A	
AIR TO GROUND	13	169.1500	000.0	169.1500	000.0	A	
AIR TO GROUND	14	168.4000	000.0	168.4000	000.0	A	
<b>9. Prepared By (Resource Unit Leader)</b>			<b>Approved By (Planning Section Chief)</b>			<b>Date</b>	<b>Time</b>
JENNIFER NORTON			JILL JOHNSON			07/15/2024	2100



## Division/Group Assignment List (ICS 204 WF)

Controlled Unclassified Information//Basic

<b>1. Incident Name:</b>				<b>3.</b>			
PIONEER				<b>Branch:</b>  I/II		<b>Division/Group:</b>  D	
<b>2. Operational Period:</b> 0700-2100							
Date/Time From: 07/16/2024 0700 TUE		Date/Time To: 07/16/2024 2100 TUE					
<b>4. Operations Personnel</b>							
<b>OPERATIONS CHIEF</b>		AARON ROWE, LONNIE NEWTON (T)		<b>BRANCH DIRECTOR</b>		JESSE BOHNSACK, CODY ACORD (T)	
<b>DIVISION/GROUP SUPERVISOR</b>		BRETT JOHNSON, PAUL KIMBALL (T)		<b>AIR OPS BRANCH DIRECTOR</b>		PAUL BALFOUR	
<b>5. Resources Assigned this Period</b>							
Strike Team / Task Force / Resource Designator		LWD	Leader	Number Persons	Drop Off PT./Time	Pick Up PT./Time	
O-353 SOFC		07/17	PHILLIP BORDELON	1	STEHEKIN/0700	STEHEKIN/0700	
O-581 SOFC		07/28	JEFFERY HAMMES	1	STEHEKIN/0700	STEHEKIN/2100	
O-423 TFLD		07/16	BRYCE HAVERKAMP	1	STEHEKIN/0700	STEHEKIN/0700	
O-556 TFLD		07/27	JORDAN SIMMONDS	1	STEHEKIN/0700	STEHEKIN/0700	
O-448 TFLD (T)		07/21	ANDY MENDIGUREN	1	STEHEKIN/0700	STEHEKIN/0700	
O-440 HECM		07/25	ADAM HEBERLIE	1	STEHEKIN/0700	STEHEKIN/0700	
O-477 HECM		07/24	JOSEPH KUHLMANN	1	STEHEKIN/0700	STEHEKIN/0700	
O-388 SMOD BANDELIER		07/21	JOSH O'COY	8	STEHEKIN/0700	STEHEKIN/0700	
**O-377 WFM1 WHISKEYTOWN		07/21	WARREN SWAB	8	STEHEKIN/0700	STEHEKIN/0700	
O-402 WFM2 YOSEMITE		07/21	JOHN O'COY	8	STEHEKIN/0700	STEHEKIN/0700	
E-298 ENG5 WA DNR		07/29					
E-299 ENG5 WA DNR		07/29					
E-300 ENG5 WA DNR		07/29					
E-301 ENG5 WA DNR		07/29					
E-302 ENG5 WA DNR		07/29					
O-372 LEAD READ		07/20	JACK OELFKE	1	STEHEKIN/0700	STEHEKIN/0700	
O-523 ARCH		07/25	THEO SHAHEEN-MCCONNELL	1	STEHEKIN/0700	STEHEKIN/0700	
<b>8. Division/Group Communication Summary</b>							
Function	Channel	RX Frequency N/W	RX Tone/NAC	TX Frequency N/W	TX Tone/NAC	Mode	
COMMAND	8	169.5375	123.0	164.7125	123.0	A	
COMMAND	9	170.4500	123.0	168.1000	123.0	A	
TACTICAL	1	168.0500	123.0	168.0500	123.0	A	
AIR TO GROUND	13	169.1500	000.0	169.1500	000.0	A	
AIR TO GROUND	14	168.4000	000.0	168.4000	000.0	A	
<b>9. Prepared By (Resource Unit Leader)</b>			<b>Approved By (Planning Section Chief)</b>			<b>Date</b>	<b>Time</b>
JENNIFER NORTON			JILL JOHNSON			07/15/2024	2100

## Division/Group Assignment List (ICS 204 WF)

Controlled Unclassified Information//Basic

<b>1. Incident Name:</b>				<b>3.</b>		
PIONEER				<b>Branch:</b>  I/II	<b>Division/Group:</b>  D	
<b>2. Operational Period:</b> 0700-2100						
Date/Time From: 07/16/2024 0700 TUE		Date/Time To: 07/16/2024 2100 TUE				
<b>4. Operations Personnel</b>						
<b>OPERATIONS CHIEF</b>		AARON ROWE, LONNIE NEWTON (T)		<b>BRANCH DIRECTOR</b>		JESSE BOHNSACK, CODY ACORD (T)
<b>DIVISION/GROUP SUPERVISOR</b>		BRETT JOHNSON, PAUL KIMBALL (T)		<b>AIR OPS BRANCH DIRECTOR</b>		PAUL BALFOUR
<b>5. Resources Assigned this Period</b>						
Strike Team / Task Force / Resource Designator		LWD	Leader	Number Persons	Drop Off PT./Time	Pick Up PT./Time
O-370 ARCH (T)		07/18	HENRY EATON	1	STEHEKIN/0700	STEHEKIN/0700
O-376 REAF		07/18	ROGER CHRISTOPHERSEN	1	STEHEKIN/0700	STEHEKIN/0700
O-371 REAF (T)		07/20	HEATHER RICKLEFF	1	STEHEKIN/0700	STEHEKIN/0700
O-416 MEDIC 15		07/21	ROBERT RUSZALA	1	STEHEKIN/0700	STEHEKIN/0700
O-417 MEDIC 14		07/21	LAURA KRAUSE	1	STEHEKIN/0700	STEHEKIN/0700
O-579 EMT 1		07/29	TRAVIS BRADDOCK	1	STEHEKIN/0700	STEHEKIN/2100
E-89 DRIVER BIG STATE WILDFIRE		07/27	BENJERMIN RIGGS	1	STEHEKIN/0700	STEHEKIN/0700
E-107 VUTV JB CONTRACTORS					STEHEKIN/0700	STEHEKIN/0700
E-125 VUTV JB CONTRACTORS					STEHEKIN/0700	STEHEKIN/0700
E-126 VUTV JB CONTRACTORS					STEHEKIN/0700	STEHEKIN/0700
E-139 VUTV JB CONTRACTORS					STEHEKIN/0700	STEHEKIN/0700
E-140 VUTV OUTBACK FIREFIGHTING					STEHEKIN/0700	STEHEKIN/0700
E-141 VUTV OUTBACK FIREFIGHTING					STEHEKIN/0700	STEHEKIN/0700
E-142 VUTV OUTBACK FIREFIGHTING					STEHEKIN/0700	STEHEKIN/0700
E-163 VUTV STEHEKIN RENTALS						
E-164 VUTV STEHEKIN RENTALS						
<b>6. Control Operations/Work Assignments:</b>						
<b>8. Division/Group Communication Summary</b>						
Function	Channel	RX Frequency N/W	RX Tone/NAC	TX Frequency N/W	TX Tone/NAC	Mode
COMMAND	8	169.5375	123.0	164.7125	123.0	A
COMMAND	9	170.4500	123.0	168.1000	123.0	A
TACTICAL	1	168.0500	123.0	168.0500	123.0	A
AIR TO GROUND	13	169.1500	000.0	169.1500	000.0	A
AIR TO GROUND	14	168.4000	000.0	168.4000	000.0	A
<b>9. Prepared By (Resource Unit Leader)</b>			<b>Approved By (Planning Section Chief)</b>		<b>Date</b>	<b>Time</b>
JENNIFER NORTON			JILL JOHNSON		07/15/2024	2100

## Division/Group Assignment List (ICS 204 WF)

Controlled Unclassified Information//Basic

<b>1. Incident Name:</b>				<b>3.</b>			
PIONEER				<b>Branch:</b>		<b>Division/Group:</b>	
<b>2. Operational Period:</b> 0700-2100				I/II		D	
Date/Time From: 07/16/2024 0700 TUE		Date/Time To: 07/16/2024 2100 TUE					
<b>4. Operations Personnel</b>							
<b>OPERATIONS CHIEF</b>		AARON ROWE, LONNIE NEWTON (T)		<b>BRANCH DIRECTOR</b>		JESSE BOHNSACK, CODY ACORD (T)	
<b>DIVISION/GROUP SUPERVISOR</b>		BRETT JOHNSON, PAUL KIMBALL (T)		<b>AIR OPS BRANCH DIRECTOR</b>		PAUL BALFOUR	
<b>6. Control Operations/Work Assignments:</b>							
<p><b>TASK:</b> Continue improving the community protection fireline and structure prep in and around Stehekin.</p> <p><b>PURPOSE:</b> To protect the community of Stehekin, surrounding infrastructure and historic values from fire impacts.</p> <p><b>END STATE:</b> Fire impacts to critical values in and around Stehekin have been minimized.</p>							
<b>7. Special Instructions:</b>							
<p>-All operational personnel working on USFS lands will need to conduct a thorough inspection for invasive species seeds on boots including laces, clothing, and gear prior to entering NPS lands.</p> <p>-Only fresh (direct from the cache) hose should be utilized on NPS lands to prevent the transport of invasive species seeds.</p> <p>-Hose used on USFS lands should not be used on NPS lands and hose used on NPS lands should not be used on USFS lands to prevent the spread of invasives species seeds.</p> <p>-Cargo loads being transported onto NPS lands should be inspected for invasive weed seed prior to flight.</p> <p>-NPS Resource Avoidance Area Flagging is yellow with red polka dots. Contact NPS READs before working in areas where this flagging is present.</p> <p>-Ensure hazard mitigations and IWI protocols are in place before taking action.</p> <p>-** Denotes available for Initial Attack</p> <p>-Designated Resources are available for Initial Attack response per the Pioneer Fire IA Response Plan. Number and type of resources mobilized to a new start will be determined by anticipated or requested need. Resources will be led by overhead at the Strike Team Leader level or above.</p> <p>-If Initial Attack occurs within the TFR, Wenatchee Dispatch will coordinate with appropriate duty officer and contact Field Ops for response.</p> <ul style="list-style-type: none"> <li>Field Operations will contact the Structure/IA Group Supervisor and/or Air Operations to coordinate response to new start.</li> <li>Local forest Initial Attack frequencies will be used and provided in the IAP Communications Plan</li> <li>The same process will be used for fires outside of TFR if assistance from Pioneer fire resources is requested.</li> </ul>							
<b>8. Division/Group Communication Summary</b>							
Function	Channel	RX Frequency N/W	RX Tone/NAC	TX Frequency N/W	TX Tone/NAC	Mode	
COMMAND	8	169.5375	123.0	164.7125	123.0	A	
COMMAND	9	170.4500	123.0	168.1000	123.0	A	
TACTICAL	1	168.0500	123.0	168.0500	123.0	A	
AIR TO GROUND	13	169.1500	000.0	169.1500	000.0	A	
AIR TO GROUND	14	168.4000	000.0	168.4000	000.0	A	
<b>9. Prepared By (Resource Unit Leader)</b>			<b>Approved By (Planning Section Chief)</b>			<b>Date</b>	<b>Time</b>
JENNIFER NORTON			JILL JOHNSON			07/15/2024	2100



## Division/Group Assignment List (ICS 204 WF)

Controlled Unclassified Information//Basic

<b>1. Incident Name:</b>				<b>3.</b>		
PIONEER				<b>Branch:</b>  I/II	<b>Division/Group:</b>  LAKE SHORE	
<b>2. Operational Period:</b> 0700-2100						
Date/Time From: 07/16/2024 0700 TUE		Date/Time To: 07/16/2024 2100 TUE				
<b>4. Operations Personnel</b>						
<b>OPERATIONS CHIEF</b>		AARON ROWE, LONNIE NEWTON (T)		<b>BRANCH DIRECTOR</b>		JESSE BOHNSACK, CODY ACORD (T)
<b>DIVISION/GROUP SUPERVISOR</b>		JON STONELAKE, NICK WIGLE (T)		<b>AIR OPS BRANCH DIRECTOR</b>		PAUL BALFOUR
<b>5. Resources Assigned this Period</b>						
Strike Team / Task Force / Resource Designator		LWD	Leader	Number Persons	Drop Off PT./Time	Pick Up PT./Time
O-424 TFLD		07/23	SAMUEL DAUGHERTY	1	25 MILE/0700	25 MILE/2100
O-495 TFLD (T)		07/23	ROY TAYLOR	1	25 MILE/0700	25 MILE/2100
C-42 CR2I SRV #14		07/22	UBALDO VIERA	20	25 MILE/0700	25 MILE/2100
O-461 MEDIC 16		07/22	KELLY MAX	1	25 MILE/0700	25 MILE/2100
<b>6. Control Operations/Work Assignments:</b>						
<p>TASK: Protect Forest Service infrastructure and private property by assessing structures and implementing mitigation actions between Safety Harbor to Mitchell Creek</p> <p>PURPOSE: To prevent fire impacts to property and infrastructure.</p> <p>END STATE: Infrastructure along the lake has been protected from fire impacts.</p>						
<b>7. Special Instructions:</b>						
<p>-In large or long term spike camps use helicopters, boats, or pack stock to deliver portable backcountry latrines and remove human waste if necessary. If camp does not have adequate pack, boat, or air support for human waste management, establish community latrines well away from water sources and common areas. Use human waste bags, if necessary.</p> <p>-Ensure hazard mitigations and IWI protocols are in place before taking action.</p> <p>** Denotes available for Initial Attack</p>						
<b>8. Division/Group Communication Summary</b>						
Function	Channel	RX Frequency N/W	RX Tone/NAC	TX Frequency N/W	TX Tone/NAC	Mode
COMMAND	7	168.4750	123.0	165.4000	123.0	A
COMMAND	10	170.0125	123.0	165.2500	123.0	A
COMMAND	11	170.4125	123.0	165.9625	123.0	A
TACTICAL	3	168.6000	123.0	168.6000	123.0	A
AIR TO GROUND	13	169.1500	000.0	169.1500	000.0	A
AIR TO GROUND	14	168.4000	000.0	168.4000	000.0	A
<b>9. Prepared By (Resource Unit Leader)</b>			<b>Approved By (Planning Section Chief)</b>		<b>Date</b>	<b>Time</b>
JENNIFER NORTON			JILL JOHNSON		07/15/2024	2100

# Division/Group Assignment List (ICS 204 WF)

Controlled Unclassified Information//Basic

<b>1. Incident Name:</b>				<b>3.</b>			
PIONEER				<b>IV</b>		<b>S</b>	
<b>2. Operational Period:</b> 0700-2100							
Date/Time From: 07/16/2024 0700 TUE		Date/Time To: 07/16/2024 2100 TUE					
<b>4. Operations Personnel</b>							
<b>OPERATIONS CHIEF</b>		AARON ROWE, LONNIE NEWTON (T)		<b>BRANCH DIRECTOR</b>		TIM BARNETT	
<b>DIVISION/GROUP SUPERVISOR</b>		MATT KENNEDY, JULIUS JACOBSEN (T)		<b>AIR OPS BRANCH DIRECTOR</b>		PAUL BALFOUR	
<b>5. Resources Assigned this Period</b>							
Strike Team / Task Force / Resource Designator		LWD	Leader	Number Persons	Drop Off PT./Time	Pick Up PT./Time	
O-425 TFLD		07/23	JON WILLOUGHBY	1	ICP/0700	ICP/2100	
O-249 TFLD (T)		07/16	MARK HARPER	1	ICP/0700	ICP/2100	
C-35 CRW1 UNION IHC		07/19	ERIC JORGENSON	22	H40/0700	H40/2100	
E-231 ENG5 MONTANA DNRC		07/22	ERNEST LEE NACE	5	ICP/0700	ICP/2100	
E-309 ENG4 LATE SUMMERS WILDFIRE		07/23	NOLAN ETTENHOFER	3	ICP/0700	ICP/2100	
E-325 ENG6 METHOW RIVER WILD FIRE		07/25	IVAN MUNOZ	3	ICP/0700	ICP/2100	
E-73 WTS1 STRAND TENDERS		07/22	WADE STRAND	1	CAMP 4 SPIKE/0700	CAMP 4 SPIKE/2100	
E-78 WTS2 KING HYDROSEEDING		07/24	WES BODENHAMER	1	CAMP 4 SPIKE/0700	CAMP 4 SPIKE/2100	
E-174 WTS2 UPPER VALLEY		07/20	KEITH HIATT	1	ICP/0700	ICP/2100	
O-485 FOBS		07/22	KELLY LEWIS	1	BIG HILL/0700	BIG HILL/2100	
O-488 FOBS (T)		07/23	LEE VENNING	1	BIG HILL/0700	BIG HILL/2100	
O-43 REMS 1		07/23	RICK BOSTAIN	4	CAMP 4 SPIKE/0700	CAMP 4 SPIKE/2100	
O-449 RAT1 HIGH PRIORITY		07/22	CLAIRE GARRETT	2	ICP/0700	ICP/2100	
O-358 MEDIC 11		07/16	SAVANAH MCLAUGHLIN	1	CAMP 4 SPIKE/0700	CAMP 4 SPIKE/2100	
E-260 AMBO-3 FRONT LINE		07/22	KYLE KEMERER	2	ICP/0700	ICP/2100	
<b>8. Division/Group Communication Summary</b>							
Function	Channel	RX Frequency N/W	RX Tone/NAC	TX Frequency N/W	TX Tone/NAC	Mode	
COMMAND	7	168.4750	123.0	165.4000	123.0	A	
COMMAND	10	170.0125	123.0	165.2500	123.0	A	
COMMAND	11	170.4125	123.0	165.9625	123.0	A	
COMMAND	12	170.6875	123.0	166.5750	123.0	A	
TACTICAL	1	168.0500	123.0	168.0500	123.0	A	
AIR TO GROUND	13	169.1500	000.0	169.1500	000.0	A	
AIR TO GROUND	14	168.4000	000.0	168.4000	000.0	A	
<b>9. Prepared By (Resource Unit Leader)</b>			<b>Approved By (Planning Section Chief)</b>			<b>Date</b>	<b>Time</b>
JENNIFER NORTON			JILL JOHNSON			07/15/2024	2100

## Division/Group Assignment List (ICS 204 WF)

Controlled Unclassified Information//Basic

<b>1. Incident Name:</b>			<b>3.</b>			
PIONEER			<b>Branch:</b>  IV		<b>Division/Group:</b>  S	
<b>2. Operational Period:</b> 0700-2100						
Date/Time From: 07/16/2024 0700 TUE		Date/Time To: 07/16/2024 2100 TUE				
<b>4. Operations Personnel</b>						
<b>OPERATIONS CHIEF</b>		AARON ROWE, LONNIE NEWTON (T)		<b>BRANCH DIRECTOR</b>		TIM BARNETT
<b>DIVISION/GROUP SUPERVISOR</b>		MATT KENNEDY, JULIUS JACOBSEN (T)		<b>AIR OPS BRANCH DIRECTOR</b>		PAUL BALFOUR
<b>5. Resources Assigned this Period</b>						
Strike Team / Task Force / Resource Designator		LWD	Leader	Number Persons	Drop Off PT./Time	Pick Up PT./Time
E-18 VUTV CM BACKCOUNTRY						
E-93 VUTV KWIK RESPONSE SUPPORT						
E-149 VUTV TOP GUN RES POLARIS						
<b>6. Control Operations/Work Assignments:</b>						
<p><b>TASK:</b> Monitor fire progression in Lone Fir drainage and evaluate trigger points to initiate firing operations on the Nelson Butte Road.</p> <p><b>PURPOSE:</b> To protect values down lake from the fire by establishing a barrier to fire spread.</p> <p><b>END STATE:</b> Control line anchored from H-40 to Lake Chelan and DP-51 to Lake Chelan. Lines are prepped and ready to fire.</p>						
<b>7. Special Instructions:</b>						
<p>-Ensure hazard mitigations and IWI protocols are in place before taking action.</p> <p>-** Denotes available for Initial Attack</p> <p>-Designated resources are available for Initial Attack response per the Pioneer Fire IA Response Plan. Number and type of resources mobilized to a new start will be determined by anticipated or requested need. Resources will be led by overhead at the Strike Team Leader level or above.</p> <p>-If Initial Attack occurs within the TFR, Wenatchee Dispatch will coordinate with appropriate duty officer and contact Field Ops for response.</p> <ul style="list-style-type: none"> <li>Field Operations will contact the Structure/IA Group Supervisor and/or Air Operations to coordinate response to new start.</li> <li>Local forest Initial Attack frequencies will be used and provided in the IAP Communications Plan.</li> <li>The same process will be used for fires outside of TFR if assistance from Pioneer fire resources is requested.</li> </ul>						
<b>8. Division/Group Communication Summary</b>						
Function	Channel	RX Frequency N/W	RX Tone/NAC	TX Frequency N/W	TX Tone/NAC	Mode
COMMAND	7	168.4750	123.0	165.4000	123.0	A
COMMAND	10	170.0125	123.0	165.2500	123.0	A
COMMAND	11	170.4125	123.0	165.9625	123.0	A
COMMAND	12	170.6875	123.0	166.5750	123.0	A
TACTICAL	1	168.0500	123.0	168.0500	123.0	A
AIR TO GROUND	13	169.1500	000.0	169.1500	000.0	A
AIR TO GROUND	14	168.4000	000.0	168.4000	000.0	A
<b>9. Prepared By (Resource Unit Leader)</b>			<b>Approved By (Planning Section Chief)</b>		<b>Date</b>	<b>Time</b>
JENNIFER NORTON			JILL JOHNSON		07/15/2024	2100

**Division/Group Assignment List (ICS 204 WF)**  
**Controlled Unclassified Information//Basic**

<b>1. Incident Name:</b>				<b>3.</b>		
PIONEER				Branch:  IV	Division/Group:  CONTINGENCY	
<b>2. Operational Period:</b> 0700-2100						
Date/Time From: 07/16/2024 0700 TUE		Date/Time To: 07/16/2024 2100 TUE				
<b>4. Operations Personnel</b>						
<b>OPERATIONS CHIEF</b>		AARON ROWE, LONNIE NEWTON (T)		<b>BRANCH DIRECTOR</b>		TIM BARNETT
<b>DIVISION/GROUP SUPERVISOR</b>		HEIDI SPRENGER, ROY BOOTS (T)		<b>AIR OPS BRANCH DIRECTOR</b>		PAUL BALFOUR
<b>5. Resources Assigned this Period</b>						
Strike Team / Task Force / Resource Designator	LWD	Leader	Number Persons	Drop Off PT./Time	Pick Up PT./Time	
O-455 SOF2	07/22	PAUL BRNA	1	ICP/0700	ICP/2100	
O-400 TFLD	07/21	BENJAMIN EDDINGS	1	ICP/0700	ICP/2100	
**O-470 HEQB	07/23	AUSTIN NOBLES	1	ICP/0700	ICP/2100	
C-34 CR2I WALLOWA	07/20	KIRA SANTULLI	20	ICP/0700	ICP/2100	
C-43 CR2I DIAMOND FIRE 11B	07/22	LARRY ECKELMAN	20	ICP/0700	ICP/2100	
E-280 ENG6 RAINSTORM	07/23	GARRETT RAINS	3	ICP/0700	ICP/2100	
E-310 ENG6 BAILEY ENTERPRISES	07/24	CLIVE BAILEY	3	ICP/0700	ICP/2100	
**E-269 DZR3	07/22	JEFFERY ROBERT	2	ICP/0700	ICP/2100	
E-238 MBM2 WILDFIRE	07/21	MIKE JOHNSON	2	ICP/0700	ICP/2100	
O-426 TFLD	07/22	MITCHELL STILES	1	ICP/0700	ICP/2100	
O-586 HEQB	07/29	DAVID SUND	1	ICP/0700	ICP/2100	
O-614 FMOD FM-02		DAVID RAINS	2			
O-615 FMOD FM-01		DAVID RAINS	2			
O-433 FMOD BROTHERS FIRE	07/24	JUSTIN OFFREDI	2	ICP/0700	ICP/2100	
O-434 FMOD DELUNA ENTERPRISES	07/21	JOHN DELUNA	2	ICP/0700	ICP/2100	
C-33 CR2I NORTH PACIFIC	07/20	JOSE PEREZ	20	ICP/0700	ICP/2100	
<b>8. Division/Group Communication Summary</b>						
Function	Channel	RX Frequency N/W	RX Tone/NAC	TX Frequency N/W	TX Tone/NAC	Mode
COMMAND	7	168.4750	123.0	165.4000	123.0	A
COMMAND	10	170.0125	123.0	165.2500	123.0	A
COMMAND	11	170.4125	123.0	165.9625	123.0	A
COMMAND	12	170.6875	123.0	166.5750	123.0	A
TACTICAL	2	168.2000	123.0	168.2000	123.0	A
AIR TO GROUND	13	169.1500	000.0	169.1500	000.0	A
AIR TO GROUND	14	168.4000	000.0	168.4000	000.0	A
<b>9. Prepared By (Resource Unit Leader)</b>			<b>Approved By (Planning Section Chief)</b>		<b>Date</b>	<b>Time</b>
CHRIS VOLK			JILL JOHNSON		07/15/2024	2100

**Division/Group Assignment List (ICS 204 WF)**  
**Controlled Unclassified Information//Basic**

<b>1. Incident Name:</b>				<b>3.</b>		
PIONEER				Branch:	Division/Group:	
<b>2. Operational Period: 0700-2100</b>						
Date/Time From: 07/16/2024 0700 TUE		Date/Time To: 07/16/2024 2100 TUE		IV	CONTINGENCY	
<b>4. Operations Personnel</b>						
<b>OPERATIONS CHIEF</b>		AARON ROWE, LONNIE NEWTON (T)		<b>BRANCH DIRECTOR</b>		TIM BARNETT
<b>DIVISION/GROUP SUPERVISOR</b>		HEIDI SPRENGER, ROY BOOTS (T)		<b>AIR OPS BRANCH DIRECTOR</b>		PAUL BALFOUR
<b>5. Resources Assigned this Period</b>						
Strike Team / Task Force / Resource Designator	LWD	Leader	Number Persons	Drop Off PT./Time	Pick Up PT./Time	
E-324 ENG6 METHOW RIVER WILD FIRE	07/25	JOHN NEUNEKER	3	ICP/0700	ICP/2100	
E-237 DZR2 HAYWIRE SERVICES	07/21	KEVIN HANSON	2	ICP/0700	ICP/2100	
E-205 DZR3 DOUGLAS LOGGING	07/26	STEVE DOUGLAS	1	ICP/0700	ICP/2100	
E-105 MBM2 JUSTIN PITTS TRUCKING	07/28	ADAM BERGSTROM	2	ICP/0700	ICP/2100	
E-102 SKG2 DUKES EQUIPMENT	07/27	CORY JOHNSON	2	ICP/0700	ICP/2100	
E-278 SKG2 DUKES EQUIPMENT	07/22	MATT SVEEN	2	ICP/0700	ICP/2100	
E-157 WTS2 PINE MOUNTAIN EXCAVATING	07/25	BOB GOSS	1			
O-468 TFLD	07/23	JENNY ALEXANDER	1	ICP/0700	ICP/2100	
O-518 TFLD (T)	07/24	AUSTIN R MCDONALD	1	ICP/0700	ICP/2100	
O-430 HEQB	07/21	TYLER F KUIKEN	1	ICP/0700	ICP/2100	
O-540 HEQB (T)	07/24	BENJAMIN BOUCHER	1	ICP/0700	ICP/2100	
O-594 HEQB (T)	07/28	DREW PARKER	1	ICP/0700	ICP/2100	
E-236 DZR2 TOP RAIL	07/21	DAIN LUKEHART	2	ICP/0700	ICP/2100	
E-268 DZR3 REMSBERG LOGGING	07/21	CHRIS JACK	2	ICP/0700	ICP/2100	
E-270 DZR1 SILVER NICKEL LOGGING	07/23	DONNIE COMBS	2	ICP/0700	ICP/2100	
E-271 DZR2 DUKES EQUIPMENT	07/22	TYSON HAUBER	2	ICP/0700	ICP/2100	
<b>8. Division/Group Communication Summary</b>						
Function	Channel	RX Frequency N/W	RX Tone/NAC	TX Frequency N/W	TX Tone/NAC	Mode
COMMAND	7	168.4750	123.0	165.4000	123.0	A
COMMAND	10	170.0125	123.0	165.2500	123.0	A
COMMAND	11	170.4125	123.0	165.9625	123.0	A
COMMAND	12	170.6875	123.0	166.5750	123.0	A
TACTICAL	2	168.2000	123.0	168.2000	123.0	A
AIR TO GROUND	13	169.1500	000.0	169.1500	000.0	A
AIR TO GROUND	14	168.4000	000.0	168.4000	000.0	A
<b>9. Prepared By (Resource Unit Leader)</b>			<b>Approved By (Planning Section Chief)</b>		<b>Date</b>	<b>Time</b>
CHRIS VOLK			JILL JOHNSON		07/15/2024	2100

**Division/Group Assignment List (ICS 204 WF)**  
**Controlled Unclassified Information//Basic**

<b>1. Incident Name:</b>				<b>3.</b>		
PIONEER				Branch:	Division/Group:	
<b>2. Operational Period: 0700-2100</b>						
Date/Time From: 07/16/2024 0700 TUE		Date/Time To: 07/16/2024 2100 TUE		IV	CONTINGENCY	
<b>4. Operations Personnel</b>						
<b>OPERATIONS CHIEF</b>		AARON ROWE, LONNIE NEWTON (T)		<b>BRANCH DIRECTOR</b>		TIM BARNETT
<b>DIVISION/GROUP SUPERVISOR</b>		HEIDI SPRENGER, ROY BOOTS (T)		<b>AIR OPS BRANCH DIRECTOR</b>		PAUL BALFOUR
<b>5. Resources Assigned this Period</b>						
Strike Team / Task Force / Resource Designator		LWD	Leader	Number Persons	Drop Off PT./Time	Pick Up PT./Time
E-272 FEL1 HAVILLAH LOGGING CO.		07/22	TOM KERSHNER	2	ICP/0700	ICP/2100
E-273 FEL1 SILVER NICKLE LOGGING		07/22	RUDY RODRIGUEZ	2	ICP/0700	ICP/2100
E-240 FEL2 AXSUS		07/21	PAUL MCNITT	2	ICP/0700	ICP/2100
E-241 FEL2 LOST CREEK LOGGING		07/21	DUSTIN CHANTRY	2	ICP/0700	ICP/2100
E-318 LOGL SILVER NICKEL LOGGING		07/25	BART SILVERTHORN	2	ICP/0700	ICP/2100
E-319 LOGL SILVER NICKEL LOGGING		07/25	BRENDEN LATIMER	1	ICP/0700	ICP/2100
E-320 LOGT SILVER NICKEL LOGGING		07/25	JASON AYERS	1	ICP/0700	ICP/2100
E-321 LOGT SILVER NICKEL LOGGING		07/25	CHAD HOCKETT	1	ICP/0700	ICP/2100
E-322 LOGT SILVER NICKEL LOGGING		07/25	RON MCGINNEY	1	ICP/0700	ICP/2100
E-323 LOGT SILVER NICKEL LOGGING		07/25	DERICK RAIDAN	1	ICP/0700	ICP/2100
E-316 DUMP BCD CONTRACTING		07/25	ALEXANDER STARK	1	ICP/0700	ICP/2100
E-317 DUMP WILLS TRUCKING AND EXEC-		07/25	WILL KRICHBAUM	1	ICP/0700	ICP/2100
E-208 SKG2 NW DIESEL DUDES		07/25	ROBERT LUNYOU	2	ICP/0700	ICP/2100
E-347 SKG1 AXSUS ENTERPRISES LLC		07/27	JARED REED	2	ICP/0700	ICP/2100
E-274 SKD1 SILVER-NICKEL LOGGING		07/23	WYATT PERSHING	1	ICP/0700	ICP/2100
E-275 SKD1 SILVER-NICKEL LOGGING		07/23	KODY AYERS	1	ICP/0700	ICP/2100
E-173 WTS2 RIDGE TOP IRON		07/27	TIM WHITEHURST	1		
<b>8. Division/Group Communication Summary</b>						
Function	Channel	RX Frequency N/W	RX Tone/NAC	TX Frequency N/W	TX Tone/NAC	Mode
COMMAND	7	168.4750	123.0	165.4000	123.0	A
COMMAND	10	170.0125	123.0	165.2500	123.0	A
COMMAND	11	170.4125	123.0	165.9625	123.0	A
COMMAND	12	170.6875	123.0	166.5750	123.0	A
TACTICAL	2	168.2000	123.0	168.2000	123.0	A
AIR TO GROUND	13	169.1500	000.0	169.1500	000.0	A
AIR TO GROUND	14	168.4000	000.0	168.4000	000.0	A
<b>9. Prepared By (Resource Unit Leader)</b>			<b>Approved By (Planning Section Chief)</b>		<b>Date</b>	<b>Time</b>
CHRIS VOLK			JILL JOHNSON		07/15/2024	2100



# Division/Group Assignment List (ICS 204 WF)

Controlled Unclassified Information//Basic

<b>1. Incident Name:</b>				<b>3.</b>			
PIONEER				<b>Branch:</b>  IV		<b>Division/Group:</b>  CONTINGENCY	
<b>2. Operational Period:</b> 0700-2100							
Date/Time From: 07/16/2024 0700 TUE		Date/Time To: 07/16/2024 2100 TUE					
<b>4. Operations Personnel</b>							
<b>OPERATIONS CHIEF</b>		AARON ROWE, LONNIE NEWTON (T)		<b>BRANCH DIRECTOR</b>		TIM BARNETT	
<b>DIVISION/GROUP SUPERVISOR</b>		HEIDI SPRENGER, ROY BOOTS (T)		<b>AIR OPS BRANCH DIRECTOR</b>		PAUL BALFOUR	
<b>5. Resources Assigned this Period</b>							
Strike Team / Task Force / Resource Designator		LWD	Leader	Number Persons	Drop Off PT./Time	Pick Up PT./Time	
**O-457 TFLD		07/21	JEFFERY DICKINSON	1	ICP/0700	ICP/2100	
O-431 HEQB		07/21	DAN POOLE	1	ICP/0700	ICP/2100	
O-445 HEQB (T)		07/21	KELSIE P RANTZOW	1	ICP/0700	ICP/2100	
**C-32 CR2I PATRICK		07/19	GARTH CHAMBERS	20	ICP/0700	ICP/2100	
**E-279 ENG6 LATE SUMMERS		07/22	JENSEN BOVEE	3	ICP/0700	ICP/2100	
**E-235 ENG6 PIKE		07/22	ANDREW L DUZET	4	ICP/0700	ICP/2100	
E-151 MBM2 DUKES EQUIPMENT		07/22	CHRIS BOYLES	2	ICP/0700	ICP/2100	
E-152 MBM2 AXSUS		07/28	ADAM HEDLUND	2	ICP/0700	ICP/2100	
E-154 SKG2 WESTERN		07/27	TAUNER LAUMAN	2	ICP/0700	ICP/2100	
E-155 SKG2 MOUNTAIN VIEW		07/27	SHAWN BEAMAN	2	ICP/0700	ICP/2100	
E-242 EXC2 DELANGE ENTERPRISES		07/21	PETE DELANGE	2	ICP/0700	ICP/2100	
O-383 MEDIC 13		07/18	TONY BYLSKI	1	ICP/0700	ICP/2100	
O-464 REMS 3		07/22	RON PEARSALL	4	ICP/0700	ICP/2100	
O-534 MEDIC 7		07/25	JOSHUA GRAY	1	ICP/0700	ICP/2100	
E-194 AMBO-2		07/29	ANNA REYNOLDS	2	ICP/0700	ICP/2100	
<b>8. Division/Group Communication Summary</b>							
Function	Channel	RX Frequency N/W	RX Tone/NAC	TX Frequency N/W	TX Tone/NAC	Mode	
COMMAND	7	168.4750	123.0	165.4000	123.0	A	
COMMAND	10	170.0125	123.0	165.2500	123.0	A	
COMMAND	11	170.4125	123.0	165.9625	123.0	A	
COMMAND	12	170.6875	123.0	166.5750	123.0	A	
TACTICAL	2	168.2000	123.0	168.2000	123.0	A	
AIR TO GROUND	13	169.1500	000.0	169.1500	000.0	A	
AIR TO GROUND	14	168.4000	000.0	168.4000	000.0	A	
<b>9. Prepared By (Resource Unit Leader)</b>			<b>Approved By (Planning Section Chief)</b>			<b>Date</b>	<b>Time</b>
CHRIS VOLK			JILL JOHNSON			07/15/2024	2100

## Division/Group Assignment List (ICS 204 WF)

Controlled Unclassified Information//Basic

<b>1. Incident Name:</b>				<b>3.</b>		
PIONEER				<b>IV</b>	<b>CONTINGENCY</b>	
<b>2. Operational Period:</b> 0700-2100						
Date/Time From: 07/16/2024 0700 TUE		Date/Time To: 07/16/2024 2100 TUE				
<b>4. Operations Personnel</b>						
<b>OPERATIONS CHIEF</b>		AARON ROWE, LONNIE NEWTON (T)		<b>BRANCH DIRECTOR</b>		TIM BARNETT
<b>DIVISION/GROUP SUPERVISOR</b>		HEIDI SPRENGER, ROY BOOTS (T)		<b>AIR OPS BRANCH DIRECTOR</b>		PAUL BALFOUR
<b>5. Resources Assigned this Period</b>						
Strike Team / Task Force / Resource Designator		LWD	Leader	Number Persons	Drop Off PT./Time	Pick Up PT./Time
E-19 VUTV BACKCOUNTRY RENTALS					ICP/0700	ICP/2100
E-44 VATV KIRCHER SHERMAN					ICP/0700	ICP/2100
E-108 VUTV (2 SEAT) -KIRCHER AND SHERMAN					ICP/0700	ICP/2100
<b>6. Control Operations/Work Assignments:</b>						
<p><b>Task:</b> Implement control lines from H45 to DP53. Continue road maintenance on 4330 and 4010. Continue the POD line from DP53 to Lake Chelan.</p> <p><b>Purpose:</b> To protect critical values at risk.</p> <p><b>End state:</b> To have established control lines in place that correspond to Pioneer Fire strategic plan.</p>						
<b>7. Special Instructions:</b>						
<p>-Ensure hazard mitigations and IWI protocols are in place before taking action.</p> <p>-Contingency resources working DIV H: Do not draft from Gold Creek to Black Canyon Creek.</p> <p>-Work with READS to maintain resource protection.</p> <p>Antilon line construction (H47-Goff Peak) tree process &amp; thin specs:</p> <p>--Whole tree yard to READ-designated landings; cut &amp; process at landings; do not sort along 8200 road</p> <p>--Retain 30 trees per acre (~ 40'x40' spacing)</p> <p>--Do not cut trees &gt;16", unless deemed a hazard tree</p> <p>--Preferential order for tree retention, first keep: white bark pine, Ponderosa Pine, Douglas-Fir, then lodgepole pine</p>						
<b>8. Division/Group Communication Summary</b>						
Function	Channel	RX Frequency N/W	RX Tone/NAC	TX Frequency N/W	TX Tone/NAC	Mode
COMMAND	7	168.4750	123.0	165.4000	123.0	A
COMMAND	10	170.0125	123.0	165.2500	123.0	A
COMMAND	11	170.4125	123.0	165.9625	123.0	A
COMMAND	12	170.6875	123.0	166.5750	123.0	A
TACTICAL	2	168.2000	123.0	168.2000	123.0	A
AIR TO GROUND	13	169.1500	000.0	169.1500	000.0	A
AIR TO GROUND	14	168.4000	000.0	168.4000	000.0	A
<b>9. Prepared By (Resource Unit Leader)</b>			<b>Approved By (Planning Section Chief)</b>		<b>Date</b>	<b>Time</b>
CHRIS VOLK			JILL JOHNSON		07/15/2024	2100

## Division/Group Assignment List (ICS 204 WF)

Controlled Unclassified Information//Basic

<b>1. Incident Name:</b>				<b>3.</b>			
PIONEER				<b>IV</b>	<b>CONTINGENCY</b>		
<b>2. Operational Period:</b> 0700-2100							
Date/Time From: 07/16/2024 0700 TUE		Date/Time To: 07/16/2024 2100 TUE					
<b>4. Operations Personnel</b>							
<b>OPERATIONS CHIEF</b>		AARON ROWE, LONNIE NEWTON (T)		<b>BRANCH DIRECTOR</b>		TIM BARNETT	
<b>DIVISION/GROUP SUPERVISOR</b>		HEIDI SPRENGER, ROY BOOTS (T)		<b>AIR OPS BRANCH DIRECTOR</b>		PAUL BALFOUR	
<b>7. Special Instructions:</b>							
<p>--No restrictions on brush removal                      -** Denotes available for Initial Attack                      -Designated resources are available for Initial Attack response per the Pioneer Fire IA Response Plan. Number and type of resources mobilized to a new start will be determined by anticipated or requested need. Resources will be led by overhead at the Strike Team Leader level or above.                      -If Initial Attack occurs within the TFR, Wenatchee Dispatch will coordinate with appropriate duty officer and contact Field Ops for response.</p> <ul style="list-style-type: none"> <li>Field Operations will contact the Structure/IA Group Supervisor and/or Air Operations to coordinate response to new start.</li> <li>Local forest Initial Attack frequencies will be used and provided in the IAP Communications Plan.</li> <li>The same process will be used for fires outside of TFR if assistance from Pioneer fire resources is requested.</li> </ul>							
<b>8. Division/Group Communication Summary</b>							
Function	Channel	RX Frequency N/W	RX Tone/NAC	TX Frequency N/W	TX Tone/NAC	Mode	
COMMAND	7	168.4750	123.0	165.4000	123.0	A	
COMMAND	10	170.0125	123.0	165.2500	123.0	A	
COMMAND	11	170.4125	123.0	165.9625	123.0	A	
COMMAND	12	170.6875	123.0	166.5750	123.0	A	
TACTICAL	2	168.2000	123.0	168.2000	123.0	A	
AIR TO GROUND	13	169.1500	000.0	169.1500	000.0	A	
AIR TO GROUND	14	168.4000	000.0	168.4000	000.0	A	
<b>9. Prepared By (Resource Unit Leader)</b>			<b>Approved By (Planning Section Chief)</b>			<b>Date</b>	<b>Time</b>
CHRIS VOLK			JILL JOHNSON			07/15/2024	2100

**Division/Group Assignment List (ICS 204 WF)**  
**Controlled Unclassified Information//Basic**

<b>1. Incident Name:</b>				<b>3.</b>		
PIONEER				Branch:  IV	Division/Group:  ROADS	
<b>2. Operational Period:</b> 0700-2100						
Date/Time From: 07/16/2024 0700 TUE		Date/Time To: 07/16/2024 2100 TUE				
<b>4. Operations Personnel</b>						
<b>OPERATIONS CHIEF</b>		AARON ROWE, LONNIE NEWTON (T)		<b>BRANCH DIRECTOR</b>		TIM BARNETT
<b>DIVISION/GROUP SUPERVISOR</b>		FIDEL VERDUZCO, ERIN SPRINGER (T)		<b>AIR OPS BRANCH DIRECTOR</b>		PAUL BALFOUR
<b>5. Resources Assigned this Period</b>						
Strike Team / Task Force / Resource Designator	LWD	Leader	Number Persons	Drop Off PT./Time	Pick Up PT./Time	
O-517 TFLD	07/26	DUSTIN SILVEY	1	ICP/0700	ICP/2100	
O-429 HEQB	07/22	JONATHAN MCFARLAND	1	ICP/0700	ICP/2100	
O-566 HEQB	07/29	CHRISTOPHER WERNER	1	ICP/0700	ICP/2100	
**E-92 DZR3 BATCHELOR EXCAVATION	07/23	JAY BATCHELOR	2	ICP/0700	ICP/2100	
E-76 WTS2 MOUNTAIN VIEW WILDFIRE	07/27	WICK FIFE	2	ICP/0700	ICP/2100	
E-83 WTS2 KING HYDROSEEDING	07/24	JOE IVIE	1	ICP/0700	ICP/2100	
E-172 WTS2 KIM KOZELISKY	07/24	RICHARD REYNOLDS	1	ICP/0700	ICP/2100	
**E-178 WTS2 NORTHERN CONSTRUCTION	07/25	BILL ACKERSON	1	ICP/0700	ICP/2100	
E-330 WTS2 MVP TEAM	07/25	DALE KONRAD	1	ICP/0700	ICP/2100	
E-333 WTS2 KIM KOZELISKY	07/25	JIM SMITH	1	ICP/0700	ICP/2100	
E-334 WTS2 PANTHER RIDGE FIRE LLC	07/25	DOUG STONE	1	ICP/0700	ICP/2100	
E-356 WTS2 NORTHERN CONSTRUCTION	07/29	BOB HOLLANDSWORTH	1	ICP/0700	ICP/2100	
E-339 WTS2 ARCHER MOUNTAIN ENTERPRISES	07/28	JONATHAN EVANS	1	ICP/0700	ICP/2100	
E-307 GRD1 JUSTIN PITTS TRUCKING, INC.	07/24	MIKE WOOTEN	2	ICP/0700	ICP/2100	
E-308 GRD2 PETTET TRANSPORTATION INC.	07/25	MARK ROWE	2	ICP/0700	ICP/2100	
<b>8. Division/Group Communication Summary</b>						
Function	Channel	RX Frequency N/W	RX Tone/NAC	TX Frequency N/W	TX Tone/NAC	Mode
COMMAND	7	168.4750	123.0	165.4000	123.0	A
COMMAND	8	169.5375	123.0	164.7125	123.0	A
COMMAND	10	170.0125	123.0	165.2500	123.0	A
COMMAND	11	170.4125	123.0	165.9625	123.0	A
TACTICAL	5	166.7750	123.0	166.7750	123.0	A
AIR TO GROUND	13	169.1500	000.0	169.1500	000.0	A
AIR TO GROUND	14	168.4000	000.0	168.4000	000.0	A
<b>9. Prepared By (Resource Unit Leader)</b>			<b>Approved By (Planning Section Chief)</b>		<b>Date</b>	<b>Time</b>
JENNIFER NORTON			JILL JOHNSON		07/15/2024	2100

## Division/Group Assignment List (ICS 204 WF)

Controlled Unclassified Information//Basic

<b>1. Incident Name:</b>				<b>3.</b>			
PIONEER				<b>Branch:</b>  IV		<b>Division/Group:</b>  ROADS	
<b>2. Operational Period:</b> 0700-2100							
Date/Time From: 07/16/2024 0700 TUE		Date/Time To: 07/16/2024 2100 TUE					
<b>4. Operations Personnel</b>							
<b>OPERATIONS CHIEF</b>		AARON ROWE, LONNIE NEWTON (T)		<b>BRANCH DIRECTOR</b>		TIM BARNETT	
<b>DIVISION/GROUP SUPERVISOR</b>		FIDEL VERDUZCO, ERIN SPRINGER (T)		<b>AIR OPS BRANCH DIRECTOR</b>		PAUL BALFOUR	
<b>5. Resources Assigned this Period</b>							
Strike Team / Task Force / Resource Designator		LWD	Leader	Number Persons	Drop Off PT./Time	Pick Up PT./Time	
<b>6. Control Operations/Work Assignments:</b>							
<p><b>TASK:</b> Complete road repair on Antoine, 8140, 8020, and Black Canyon Roads.</p> <p><b>PURPOSE:</b> To return the roads affected by suppression traffic to their original state.</p> <p><b>END STATE:</b> Roads affected by fire suppression use are returned to pre-fire condition.</p>							
<b>7. Special Instructions:</b>							
-Ensure hazard mitigations and IWI protocols are in place before taking action.							
<b>8. Division/Group Communication Summary</b>							
Function	Channel	RX Frequency N/W	RX Tone/NAC	TX Frequency N/W	TX Tone/NAC	Mode	
COMMAND	7	168.4750	123.0	165.4000	123.0	A	
COMMAND	8	169.5375	123.0	164.7125	123.0	A	
COMMAND	10	170.0125	123.0	165.2500	123.0	A	
COMMAND	11	170.4125	123.0	165.9625	123.0	A	
TACTICAL	5	166.7750	123.0	166.7750	123.0	A	
AIR TO GROUND	13	169.1500	000.0	169.1500	000.0	A	
AIR TO GROUND	14	168.4000	000.0	168.4000	000.0	A	
<b>9. Prepared By (Resource Unit Leader)</b>			<b>Approved By (Planning Section Chief)</b>			<b>Date</b>	<b>Time</b>
JENNIFER NORTON			JILL JOHNSON			07/15/2024	2100

## Division/Group Assignment List (ICS 204 WF)

Controlled Unclassified Information//Basic

<b>1. Incident Name:</b>				<b>3.</b>			
PIONEER				<b>Branch:</b>  IV		<b>Division/Group:</b>  STRUCTURE/IA	
<b>2. Operational Period:</b> 0700-2100							
Date/Time From: 07/16/2024 0700 TUE		Date/Time To: 07/16/2024 2100 TUE					
<b>4. Operations Personnel</b>							
<b>OPERATIONS CHIEF</b>		AARON ROWE, LONNIE NEWTON (T)		<b>BRANCH DIRECTOR</b>		TIM BARNETT	
<b>DIVISION/GROUP SUPERVISOR</b>		SCOTT CLEAVE		<b>AIR OPS BRANCH DIRECTOR</b>		PAUL BALFOUR	
<b>5. Resources Assigned this Period</b>							
Strike Team / Task Force / Resource Designator		LWD	Leader	Number Persons	Drop Off PT./Time	Pick Up PT./Time	
O-491 SOFR		07/24	JONATHAN T LEE	1	ICP/0700	ICP/2100	
C-48 CRW2 NORTH PACIFIC FORESTRY		07/24	OSCAR SANCHES	20	ICP/0700	ICP/2100	
C-49 CRW2 NORTH PACIFIC FORESTRY		07/23	BERTHA MARTINEZ	20	ICP/0700	ICP/2100	
O-482 TFLD		07/22	MARCUS WELLS	1	ICP/0700	ICP/2100	
O-483 STEN (T)		07/22	CHUCK W KOCHER	1	ICP/0700	ICP/2100	
E-281 ENG5 CHELAN CO. FD #6		07/22	AUSTIN SABEDRA	3	ICP/0700	ICP/2100	
E-282 ENG5 CHELAN CO FD#3		07/22	NATHAN RICHMAN	2	ICP/0700	ICP/2100	
E-283 ENG3 CHELAN F&R		07/22	TROY KEENE	3	ICP/0700	ICP/2100	
E-284 ENG5 CITY OF MOSES LAKE		07/22	LUKE GARRISON	3	ICP/0700	ICP/2100	
E-285 ENG3 CHELAN CO FD #9		07/22	ANLYN FLAKE	3	ICP/0700	ICP/2100	
E-232 ENG5 MONTANA DNRC		07/22	SOL ARNO	3	ICP/0700	ICP/2100	
E-233 ENG5 MONTANA DNRC		07/20	BRAEDEN MIKKELSON	3	ICP/0700	ICP/2100	
E-234 ENG6 IDAHO IDL		07/21	COLE SCHIERMEISTER	4	ICP/0700	ICP/2100	
E-179 WTS2 KING HYDROSEEDING		07/28	BILL BLACK	1	ICP/0700	ICP/2100	
<b>8. Division/Group Communication Summary</b>							
Function	Channel	RX Frequency N/W	RX Tone/NAC	TX Frequency N/W	TX Tone/NAC	Mode	
COMMAND	7	168.4750	123.0	165.4000	123.0	A	
COMMAND	10	170.0125	123.0	165.2500	123.0	A	
TACTICAL	4	166.7250	123.0	166.7250	123.0	A	
AIR TO GROUND	13	169.1500	000.0	169.1500	000.0	A	
AIR TO GROUND	14	168.4000	000.0	168.4000	000.0	A	
<b>9. Prepared By (Resource Unit Leader)</b>			<b>Approved By (Planning Section Chief)</b>			<b>Date</b>	<b>Time</b>
JENNIFER NORTON			JILL JOHNSON			07/15/2024	2100



## Division/Group Assignment List (ICS 204 WF)

Controlled Unclassified Information//Basic

<b>1. Incident Name:</b>			<b>3.</b>			
PIONEER			<b>IV</b>	<b>STRUCTURE/IA</b>		
<b>2. Operational Period:</b> 0700-2100						
Date/Time From:	TUE	Date/Time To:	TUE			
07/16/2024 0700		07/16/2024 2100				
<b>4. Operations Personnel</b>						
<b>OPERATIONS CHIEF</b>		AARON ROWE, LONNIE NEWTON (T)		<b>BRANCH DIRECTOR</b>		TIM BARNETT
<b>DIVISION/GROUP SUPERVISOR</b>		SCOTT CLEAVE		<b>AIR OPS BRANCH DIRECTOR</b>		PAUL BALFOUR
<b>5. Resources Assigned this Period</b>						
Strike Team / Task Force / Resource Designator	LWD	Leader	Number Persons	Drop Off PT./Time	Pick Up PT./Time	
O-460 MEDIC 17	07/22	TREVOR LEARY	1	ICP/0700	ICP/2100	
<b>6. Control Operations/Work Assignments:</b>						
<p><b>TASK:</b> Continue structure assessment northeast of Manson and complete structure protection plan for Manson.</p> <p><b>PURPOSE:</b> Plan for and mitigate potential long-term impact to communities down lake from fire.</p> <p><b>END STATE:</b> Structure Plan has been developed and mitigation implemented for protection of structures in and around Manson.</p>						
<b>7. Special Instructions:</b>						
<p>-Ensure hazard mitigations and IWI protocols are in place before taking action.</p> <p>-All resources in Structure/IA Group are available for Initial Attack response per the Pioneer Fire IA Response Plan. Number and type of resources mobilized to a new start will be determined by anticipated or requested need. Resources will be led by overhead at the Strike Team Leader level or above.</p> <p>-If Initial Attack occurs within the TFR, Wenatchee Dispatch will coordinate with appropriate duty officer and contact Field Ops for response.</p> <ul style="list-style-type: none"> <li>Field Operations will contact the Structure/IA Group Supervisor and/or Air Operations to coordinate response to new start.</li> <li>Local forest Initial Attack frequencies will be used and provided in the IAP Communications Plan.</li> <li>The same process will be used for fires outside of TFR if assistance from Pioneer fire resources is requested.</li> </ul>						
<b>8. Division/Group Communication Summary</b>						
Function	Channel	RX Frequency N/W	RX Tone/NAC	TX Frequency N/W	TX Tone/NAC	Mode
COMMAND	7	168.4750	123.0	165.4000	123.0	A
COMMAND	10	170.0125	123.0	165.2500	123.0	A
TACTICAL	4	166.7250	123.0	166.7250	123.0	A
AIR TO GROUND	13	169.1500	000.0	169.1500	000.0	A
AIR TO GROUND	14	168.4000	000.0	168.4000	000.0	A
<b>9. Prepared By (Resource Unit Leader)</b>			<b>Approved By (Planning Section Chief)</b>		<b>Date</b>	<b>Time</b>
JENNIFER NORTON			JILL JOHNSON		07/15/2024	2100



## Division/Group Assignment List (ICS 204 WF)

Controlled Unclassified Information//Basic

<b>1. Incident Name:</b>				<b>3.</b>			
PIONEER				<b>Branch:</b>		<b>Division/Group:</b>	
<b>2. Operational Period:</b> 0700-2100							
Date/Time From: 07/16/2024 0700 TUE		Date/Time To: 07/16/2024 2100 TUE		<b>BOAT</b>			
<b>4. Operations Personnel</b>							
<b>OPERATIONS CHIEF</b>		AARON ROWE, LONNIE NEWTON (T)		<b>BRANCH DIRECTOR</b>		JEROMY WILSON	
<b>DIVISION/GROUP SUPERVISOR</b>		SAM STEINSHOUER, TOSTEN KULAAS		<b>AIR OPS BRANCH DIRECTOR</b>		PAUL BALFOUR	
<b>5. Resources Assigned this Period</b>							
Strike Team / Task Force / Resource Designator		LWD	Leader	Number Persons	Drop Off PT./Time	Pick Up PT./Time	
O-458 TFLD		07/22	GREG SEALS	1	LUCERNE/0700	LUCERNE/2100	
O-469 TFLD		07/23	BRIAN JAMES	1	ICP/0700	ICP/2100	
O-559 TFLD		07/27	KERRY WEBSTER	1	ICP/0700	ICP/2100	
O-263 TFLD (T)		07/18	AARON PEDERSEN	1	ICP/0700	ICP/2100	
O-369 TFLD (T)		07/15	KATY GIDDINGS	1	ICP/0700	ICP/2100	
O-310 HEQB		07/20	DAVID REPNIK	1	ICP/0700	ICP/2100	
O-331 HEQB		07/16	BRANDON REED	1	ICP/0700	ICP/2100	
O-332 HEQB		07/15	ERIC WEINKE	1	LUCERNE/0700	LUCERNE/2100	
O-354 HEQB		07/23	LOGAN PIKE	1	LUCERNE/0700	LUCERNE/2100	
O-361 HEQB (T)		07/16	THOMAS DOWDY	1	LUCERNE/0700	LUCERNE/2100	
O-368 HEQB (T)		07/16	COLE BINGHAM	1	LUCERNE/0700	LUCERNE/2100	
A-1.18 HECM			VINNY ADAMS	1	ICP/0700	ICP/2100	
A-94.13 HECM		07/19	LORA ANDERSON	1	ICP/0700	ICP/2100	
O-443 HECM (T)		07/25	JASON A SILVESTRI	1	ICP/0700	ICP/2100	
O-504 HECM (T)		07/26	ANDREW BAKER	1	ICP/0700	ICP/2100	
O-607 FFT1 (T)		07/29	CHELSEA SCHAEFER	1	ICP/0700	ICP/2100	
O-609 FFT2		07/29	RUEBEN E MILLER	1	ICP/0700	ICP/2100	
<b>8. Division/Group Communication Summary</b>							
Function	Channel	RX Frequency N/W	RX Tone/NAC	TX Frequency N/W	TX Tone/NAC	Mode	
COMMAND	7	168.4750	123.0	165.4000	123.0	A	
COMMAND	8	169.5375	123.0	164.7125	123.0	A	
COMMAND	9	170.4500	123.0	168.1000	123.0	A	
COMMAND	10	170.0125	123.0	165.2500	123.0	A	
COMMAND	11	170.4125	123.0	165.9625	123.0	A	
TACTICAL	6	168.2500	123.0	168.2500	123.0	A	
AIR TO GROUND	13	169.1500	000.0	169.1500	000.0	A	
AIR TO GROUND	14	168.4000	000.0	168.4000	000.0	A	
<b>9. Prepared By (Resource Unit Leader)</b>			<b>Approved By (Planning Section Chief)</b>			<b>Date</b>	<b>Time</b>
JENNIFER NORTON			JILL JOHNSON			07/15/2024	2100

**Division/Group Assignment List (ICS 204 WF)**  
**Controlled Unclassified Information//Basic**

<b>1. Incident Name:</b>			<b>3.</b>			
PIONEER			<b>Branch:</b>		<b>Division/Group:</b>	
<b>2. Operational Period:</b> 0700-2100			BOAT			
Date/Time From: 07/16/2024 0700 TUE		Date/Time To: 07/16/2024 2100 TUE				
<b>4. Operations Personnel</b>						
<b>OPERATIONS CHIEF</b>		AARON ROWE, LONNIE NEWTON (T)		<b>BRANCH DIRECTOR</b>		JEROMY WILSON
<b>DIVISION/GROUP SUPERVISOR</b>		SAM STEINSHOUER, TOSTEN KULAAS		<b>AIR OPS BRANCH DIRECTOR</b>		PAUL BALFOUR
<b>5. Resources Assigned this Period</b>						
Strike Team / Task Force / Resource Designator		LWD	Leader	Number Persons	Drop Off PT./Time	Pick Up PT./Time
LEND LEASE FFT2			COOPER CATES	1	LUCERNE/0700	LUCERNE /2100
LEND LEASE FFT2			CASE CRUTCHER	1	LUCERNE/0700	LUCERNE/2100
E-1 TBOT WA-NCP BOAT *CWN			SONJA SHAW	1	STEHEKIN/0700	STEHEKIN/2100
E-3 TBOT CHELAN CO. F&R#7 *O/S, *N/O (LAKE SHORE)			BRANDON ASHER	2	FS DOCK/0700	FS DOCK/2100
E-12 TBOT CHELAN RD *M-SA			DICK GORDON	1	FS DOCK/0700	FS DOCK/2100
E-43 TBOT LLAMAS BOAT *O/S			GAYLE THOMAS	1	FS DOCK/0700	FS DOCK/2100
E-91 TBOT DNR/MUD PUPPY *N/O		07/26	CRAIG INDERWIESEN	1	LUCERNE/0700	LUCERNE/2100
E-98 TBOT CHELAN COUNTY SHERIFFS *O/S			RICH MAGNUSSEN	2	FS DOCK/0700	FS DOCK/2100
E-120 TBOT PILGRIM		07/17	KIP ZWOLENSKI	1	LUCERNE/0700	LUCERNE/2100
E-121 TBOT BRINNON FIRE *N/O		07/19	CHRISTOPHER DOLAN	2	LUCERNE/0700	LUCERNE/2100
E-201 TBOT SEA FALCON		07/21	KAWAI LAROYA	2	FS DOCK/0700	FS DOCK/2100
E-202 TBOT RIVER RUNNER *N/O (LAKE SHORE)		07/21	MATT RYLAK	2	FS DOCK/0700	FS DOCK/2100
E-295 TBOT PUGET PROTECTOR *N/O		07/24	RYKER GIBSON	2	STEHEKIN/0700	STEHEKIN/2100
E-296 TBOT FRV #9 *N/O		07/24	TOM PETRICH	2	LUCERNE/0700	LUCERNE/2100
E-297 TBOT PIONEER PREDATOR				2	LUCERNE/0700	LUCERNE/2100
<b>8. Division/Group Communication Summary</b>						
Function	Channel	RX Frequency N/W	RX Tone/NAC	TX Frequency N/W	TX Tone/NAC	Mode
COMMAND	7	168.4750	123.0	165.4000	123.0	A
COMMAND	8	169.5375	123.0	164.7125	123.0	A
COMMAND	9	170.4500	123.0	168.1000	123.0	A
COMMAND	10	170.0125	123.0	165.2500	123.0	A
COMMAND	11	170.4125	123.0	165.9625	123.0	A
TACTICAL	6	168.2500	123.0	168.2500	123.0	A
AIR TO GROUND	13	169.1500	000.0	169.1500	000.0	A
AIR TO GROUND	14	168.4000	000.0	168.4000	000.0	A
<b>9. Prepared By (Resource Unit Leader)</b>			<b>Approved By (Planning Section Chief)</b>		<b>Date</b>	<b>Time</b>
JENNIFER NORTON			JILL JOHNSON		07/15/2024	2100

**Division/Group Assignment List (ICS 204 WF)**  
**Controlled Unclassified Information//Basic**

<b>1. Incident Name:</b>				<b>3.</b>		
PIONEER				<b>Branch:</b>	<b>Division/Group:</b>	
<b>2. Operational Period: 0700-2100</b>						
Date/Time From: 07/16/2024 0700 TUE		Date/Time To: 07/16/2024 2100 TUE		BOAT		
<b>4. Operations Personnel</b>						
<b>OPERATIONS CHIEF</b>		AARON ROWE, LONNIE NEWTON (T)		<b>BRANCH DIRECTOR</b>		JEROMY WILSON
<b>DIVISION/GROUP SUPERVISOR</b>		SAM STEINSHOUER, TOSTEN KULAAS		<b>AIR OPS BRANCH DIRECTOR</b>		PAUL BALFOUR
<b>5. Resources Assigned this Period</b>						
Strike Team / Task Force / Resource Designator		LWD	Leader	Number Persons	Drop Off PT./Time	Pick Up PT./Time
<b>6. Control Operations/Work Assignments:</b>						
<p><b>Task:</b> Provide logistical needs for all fire activities on navigable waters.</p> <p><b>Purpose:</b> Adequately support the needs of incident personnel in areas not accessible by roads.</p> <p><b>End state:</b> Deliver supplies and personnel providing a timely, safe and effective operation.</p>						
<b>7. Special Instructions:</b>						
<p>-Follow instructions in IAP for requesting Ferry Tickets.</p> <p>-All emergency medical requests for boats go through Pioneer Communications.</p> <p>-* O/S – Operator Swaps As Needed, *CWN – Call When Needed, *M-SA – Operator takes every Sunday off</p> <p>-*N/O- Night Operation Capable</p>						
<b>8. Division/Group Communication Summary</b>						
Function	Channel	RX Frequency N/W	RX Tone/NAC	TX Frequency N/W	TX Tone/NAC	Mode
COMMAND	7	168.4750	123.0	165.4000	123.0	A
COMMAND	8	169.5375	123.0	164.7125	123.0	A
COMMAND	9	170.4500	123.0	168.1000	123.0	A
COMMAND	10	170.0125	123.0	165.2500	123.0	A
COMMAND	11	170.4125	123.0	165.9625	123.0	A
TACTICAL	6	168.2500	123.0	168.2500	123.0	A
AIR TO GROUND	13	169.1500	000.0	169.1500	000.0	A
AIR TO GROUND	14	168.4000	000.0	168.4000	000.0	A
<b>9. Prepared By (Resource Unit Leader)</b>			<b>Approved By (Planning Section Chief)</b>		<b>Date</b>	<b>Time</b>
JENNIFER NORTON			JILL JOHNSON		07/15/2024	2100

AIR OPERATIONS SUMMARY ICS-220						Time Prepared 18:00	Date Prepared 7/15/2024	Prepared By Paul Balfour - AOBD					
Incident Name / Number Pioneer / WA-SES-000173		Sunrise 05:20	Sunset 20:53	Airport S10	Pumpkin 21:23	Shutdown 21:00	Operational Period - Date 7/16/2024				Operational Period - Time 0700-2100		
<b>General Remarks, Safety Notes, Hazards, Air Operations Special Equipment, etc.:</b>  <i>*Order All Aircraft over Command to Helibase.</i> <i>*All GPS coordinates to be collected in Degrees and Decimal Minutes (DMM).</i> <i>*Be mindful of all overhead and environmental hazards while working with aircraft.</i> <i>*Clear drop area/line before initiating drop sequence.</i> <i>*If dipping out of Columbia River, sanitize buckets before changing water sources.</i> <i>*** WINDS: return to helibase if winds become unmanageable.</i>  <i>*Aviation daily cost to: 2024.pioneer.finance@firenet.gov</i> <i>*Aviation daily cost to: pioneerhelibase2024@gmail.com</i>						<b>Helibase Information</b>  <b>Primary:</b> <b>Pioneer HB (Chelan Airport)</b> Location: 47 51.96 N / 119 56.56 W <b>Phone: (971) 762-8575</b>  <b>Type 1 Helicopters:</b> <b>Valley HB (Methow Valley Airport)</b> Location: 48 25.567 N / 120 08.513 W <b>Phone: (971) 727-7255</b>		<b>TFR</b> (A-74) Surface to 10,000' <b>4/6779 TFR Freq 123.4000</b> In Effect - 24 Hours  <b>Helispots</b> H-1   48 10.755' N / 120 31.803' W H-5   48 12.162' N / 120 35.447' W H-10   48 14.050' N / 120 36.461' W H12   48 13.325' N / 120 35.908' W H-14 (Stehekin A/P)   48 20.75' N / 120 43.25' W H-16   48 07.74' N / 120 29.55' W H-25   47 59.212' N / 120 16.526' W H-40   48 06.357' N / 120 20.452' W				<b>Medical Ship Information</b> <b>Medivac/Medical Transport Ship:</b> Operational Hours: 0900 to 2100 Call Pioneer Helibase 971.762.8575  <b>Short-Haul Platform:</b> Operational Hours: 0900 to 2100 Order through Pioneer Helibase	
Incident Frequencies	RX	Tone	TX		Tone	AM/FM	Position	Name	Phone		EQUIPMENT/SUPPLIES		
Air to Air Primary (A-8)	123.4000		123.4000			AM	AOBD	Paul Balfour	(509) 993-8739		Commo Trailer (Pioneer)	E-20	
Air to Air Secondary (A-9)	118.2750		118.2750			AM	AOBD(t)	Kelly Hedgepeth	(541) 805-8416		Wash Station (Pioneer)	E-47	
							ASGS	Tim Lyda	(541) 761-2676		Office Trailer (Pioneer)	E-224	
A/G Pri Tactical (A-10)	169.1500		169.1500			FM	ASGS(t)	Heather Wonenberg	(209) 347-7546		Water Tender (Pioneer)	E-77	
A/G Sec Operational (A-11)	168.4000		168.4000			FM	Air Attack	Bob Madden	(541) 350-0021		Water Tender (Pioneer)	E-14	
							Air Attack (t)	Zak Tayer	(509) 952-7419		Commo Trailer (Valley)	E-150	
TOLC	166.6125		166.6125			FM	HEBM Pioneer	Jeff Quick	(928) 853-3027		Water Tender (Valley)	E-158	
							HEBM(t) Pioneer	Alex Watson	(541) 240-9330		Water Tender (Valley)	E-346	
DECK	163.1000		163.1000			FM	HEBM Valley	Randy McLandress	(509) 668-7243				
							HEBM(t) Valley	Willow Merritt	(503) 250-4597				
COMMAND						See ICS 205 Communications Plan							
							FOBS/UR-47	Kelly Lewis	(208) 721-0232				
VMED 29	155.3475	156.7	155.3475		156.7	FM	UASL-31	Patrick Clark	(661) 342-6955				
AIR GUARD	168.6250		168.6250		110.9	FM	Entiat IHC/UR-46	Hannah Coolidge	(301) 919-9973				
National Flight Following	168.6500	110.9	168.6500		110.9	FM	CWICC	Aircraft Desk	(509) 884-3473 ext. 2				
							OWF-UAO	Ben Dronen	(509) 415-3344				
HELICOPTERS - Assigned						HELICOPTERS - GACC Prepo and Lend/Lease							
FAA #	TYPE	Make/Model	Helibase	Start	Avail	Remarks	FAA #	TYPE	Make/Model	Airport	Start	Avail	Remarks
HB-16FH (A-81)	1	UH-60	Valley	0800	0900	BKT/LL	H-125CL (A-91)	3	AS-350B3e	EAT	0800	0900	NPS MOCA Short Haul/Recon
HB-161KA (A-24)	1	K-1200	Valley	0800	0900	BKT/LL							
HB-344RA (A-45)	1	CH-47D	Valley	0800	0900	BKT/LL							
N628CK (A-162)	1	SH-3H	Valley	0800	0900	BKT/LL							
N381SH (A-129)	1	UH-60	Valley	0800	0900	BKT/LL							
H-527 (H-811KA) (A-94)	2	Bell 212HP	Chelan	0800	0900	BKT/LL/Pax							
H-669H (A-98)	2	Bell 205 A1 ++	Chelan	0800	0900	BKT/LL/Pax							
H-234BH (A-99)	3	AS-350B3	Chelan	0800	0900	Recon/BKT/Medical							
H-407RL (A-1)	3	Bell 407HP	Chelan	0800	0900	Short Haul/Recon							
UAS						FIXED WING - AirTanker/AA/HLCO							
Call Sign	Type	Make/Model	Base	Start	Avail	Remarks	FAA #	Call Sign	Make/Model	Base	Start	Avail	Remarks
UR-31	3	AltaX	Lucerne	0600	2200	IR/PSD	N-155AV	AA-5AV	King Air	EAT	0900	1000	Assigned AA
UR-46 Entiat IHC	4	Anafi	DIV A	0600	2200	IR							
UR-47	4	Anafi	DIV S	0600	2200	Kelly Lewis (FOBS)							



# INCIDENT RADIO COMMUNICATIONS PLAN (ICS 205)

Controlled Unclassified Information//Basic

<b>1. Incident Name:</b>	<b>2. Date/Time Prepared:</b>	<b>3. Operational Period:</b> 0700-2100	
PIONEER	Date: 07/15/2024 Time: 2000	Date/Time From: 07/16/2024 0700 TUE	Date/Time To: 07/16/2024 2100 TUE

**4. Basic Radio Channel Use:**

Zone Group	Ch #	Function	Channel Name/Trunked Radio System Talkgroup	Assignment	RX Freq	RX Tone/NAC	TX Freq	TX Tone/NAC	Mode (A,D, or M)	Remarks
	1	TACTICAL	TAC 1	DIV D & S	168.0500	123.0	168.0500	123.0	A	
	2	TACTICAL	TAC 2	DIV A / CONT	168.2000	123.0	168.2000	123.0	A	
	3	TACTICAL	TAC 3	LAKE SHORE	168.6000	123.0	168.6000	123.0	A	
	4	TACTICAL	TAC 4	STRUCTURE / IA	166.7250	123.0	166.7250	123.0	A	
	5	TACTICAL	TAC 5	ROADS / STAGING	166.7750	123.0	166.7750	123.0	A	
	6	TACTICAL	TAC 6	BOAT	168.2500	123.0	168.2500	123.0	A	
	7	COMMAND	CMD 7	ALL	168.4750	123.0	165.4000	123.0	A	DNR CHELAN BUTTE RPTR
	8	COMMAND	CMD 8	ALL	169.5375	123.0	164.7125	123.0	A	OLD MAID MTN
	9	COMMAND	CMD 9	ALL	170.4500	123.0	168.1000	123.0	A	MOORE MTN
	10	COMMAND	CMD 10	ALL	170.0125	123.0	165.2500	123.0	A	SLIDE RIDGE
	11	COMMAND	CMD 11	ALL	170.4125	123.0	165.9625	123.0	A	FOX PEAK
	12	COMMAND	CMD 12	ALL	170.6875	123.0	166.5750	123.0	A	GOAT MTN
	13	AIR TO GROUND	A/G PRI	ALL DIVS	169.1500	000.0	169.1500	000.0	A	
	14	AIR TO GROUND	A/G SEC	ALL DIVS	168.4000	000.0	168.4000	000.0	A	
	15	AIR TO GROUND	VMED 29	ALL DIVS	155.3475	156.7	155.3475	156.7	A	AIR EMS COORD
	16	AIR GUARD	AIRGUARD	ALL DIVS	168.6250	000.0	168.6250	110.9	A	EMERGENCY AIRCRAFT CONTACT

**5. Special Instructions:** 24-hour staffing: PIONEER COMMUNICATIONS PHONE: (208) 891-8093 / CURRENT CLONE "PIE 7-15" New Clone 7/15/24.

<b>6. Prepared By</b> (Communications Unit Leader)	Name: MISSY PARKER	Signature: <i>Missy Parker</i>
ICS 205	IAP Page	Date/Time: 07/15/2024 2000

# INCIDENT RADIO COMMUNICATIONS PLAN (ICS 205)

Controlled Unclassified Information//Basic

<b>1. Incident Name:</b>	<b>2. Date/Time Prepared:</b>	<b>3. Operational Period:</b> 0700-2100	
PIONEER - LOCAL IA	Date: 07/15/2024 Time: 2000	Date/Time From: 07/16/2024 0700 TUE	Date/Time To: 07/16/2024 2100 TUE

**4. Basic Radio Channel Use:**

Zone Group	Ch #	Function	Channel Name/Trunked Radio System Talkgroup	Assignment	RX Freq	RX Tone/NAC	TX Freq	TX Tone/NAC	Mode (A,D, or M)	Remarks
	1	COMMAND	FIRE 1		154.4300	110.9	153.8900	D051	A	RIVERCOM DISPATCH
	2	COMMAND	CO NORTH		155.3550	100.0	150.7900	100.0	A	COUNTY NORTH REPEATER
	3	TACTICAL	GOAT TAC RP		159.0675	110.9	153.8000	100.0	A	COUNTY RPTR - GOAT MTN
	4	TACTICAL	ORANGE		154.2650	107.2	154.2650	107.2	A	
	5	TACTICAL	BLACK		154.3400	151.4	154.3400	151.4	A	
	6	TACTICAL	DNR COM		151.4150	103.5	151.4150	103.5	A	
	7	COMMAND	DNR CHELAN		159.2250	156.7	151.4750	156.7	A	CHELAN BUTTE
	8	AIR TO GROUND	DNR A/G 1		159.2700	103.5	159.2700	103.5	A	
	9	COMMAND	OLD MAID		173.0500	146.2	164.9125	136.5	A	FS RPTR-OLD MAID MTN
	10	TACTICAL	WEN TAC		167.5500	000.0	167.5500	000.0	A	
	11	COMMAND	FS GOAT		173.3500	146.2	165.0125	118.8	A	GOAT MTN
	12	COMMAND	FS SLIDE		173.0500	146.2	164.9125	141.3	A	SLIDE RIDGE
	13	AIR TO GROUND	FS A/G 40		167.4500	000.0	167.4500	000.0	A	
	14	TACTICAL	WEN PROJ		168.6750	000.0	168.6750	000.0	A	
	15	COMMAND	FS BADGER		173.0500	146.2	164.9125	127.3	A	BADGER MTN
	16	TACTICAL	RED NET		153.8300	000.0	153.8300	000.0	A	

**5. Special Instructions:** 24-hour staffing: PIONEER COMMUNICATIONS PHONE: (208) 891-8093 / CURRENT CLOSE "Local IA" 7/15/24.

<b>6. Prepared By</b> (Communications Unit Leader)	Name: MISSY PARKER	Signature: <i>Missy Parker</i>
ICS 205	IAP Page	Date/Time: 07/15/2024 2000

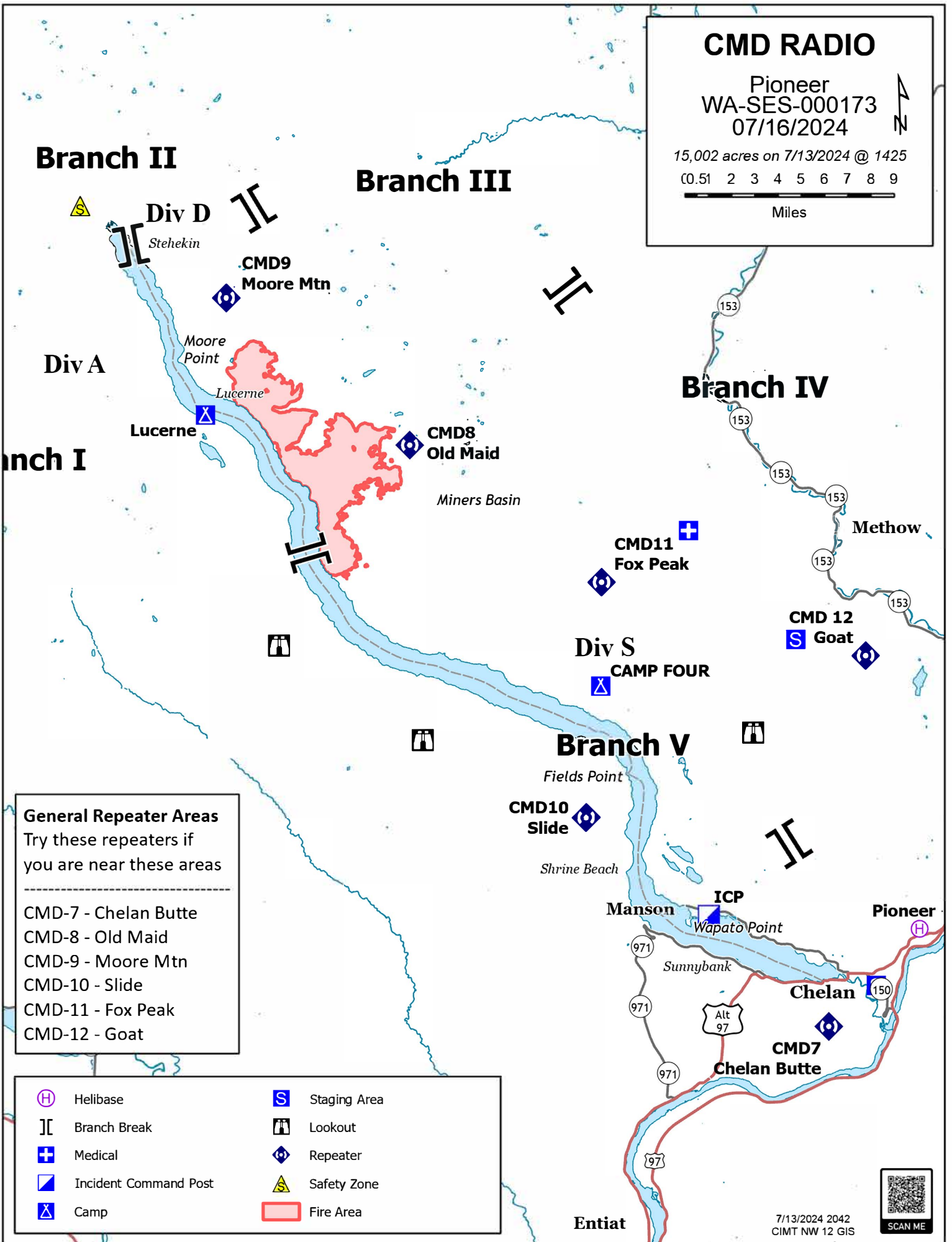
# CMD RADIO

Pioneer  
WA-SES-000173  
07/16/2024

15,002 acres on 7/13/2024 @ 1425

0.51 2 3 4 5 6 7 8 9

Miles



## General Repeater Areas

Try these repeaters if you are near these areas

- 
- CMD-7 - Chelan Butte
- CMD-8 - Old Maid
- CMD-9 - Moore Mtn
- CMD-10 - Slide
- CMD-11 - Fox Peak
- CMD-12 - Goat

- |  |                       |  |              |
|--|-----------------------|--|--------------|
|  | Helibase              |  | Staging Area |
|  | Branch Break          |  | Lookout      |
|  | Medical               |  | Repeater     |
|  | Incident Command Post |  | Safety Zone  |
|  | Camp                  |  | Fire Area    |

Entiat

7/13/2024 2042  
CIMT NW 12 GIS



## **Resource Advice**

Lead READ: Brigitte Ranne 509-663-6118, [brigitte.ranne@usda.gov](mailto:brigitte.ranne@usda.gov)

REAF: Hector Rodriguez 509-393-5379, [Hector.Rodriguez3@usda.gov](mailto:Hector.Rodriguez3@usda.gov)

REAF: Eireann Pederson 360-854-8197, [eireann.pederson@usda.gov](mailto:eireann.pederson@usda.gov)

REAF: Carrissa Camenson 360-899-7147, [carissa.camenson@usda.gov](mailto:carissa.camenson@usda.gov)

### *MIST for Spike Camp and Lucerne Forward Operating Base Management*

- Employ minimum impact suppression tactics (MIST) where feasible, especially in remote or sensitive areas.
- If spike camps are necessary, use existing, or previously impacted campsites where available. If existing campsites are not available; use your local resource advisor to help identify the most resilient sites in rocky or sandy soils. Avoid camping in wet meadows, along streams, or on lake shores.
- Store food properly so that it is not accessible to wildlife. Consider hanging food in trees at least 15 feet off the ground and 5 feet from the trunk of the tree, or store food in sealable containers. Store food away from the campsite (300 feet is ideal) to reduce the risk of human and bear (and rodent!) conflicts.
- Do not let garbage and food scraps accumulate in camp. All garbage and food scraps need to be removed from the camp ASAP and before leaving the site.
- Minimize disturbance to land in preparing bedding and campfire sites. Do not clear vegetation, trench, or excavate a flat spot to create bedding sites.
- Do not use nails in trees. Don't construct camp furniture.
- If a campfire is built for warmth in the evening, build either a pit or mound fire. Use dead and down firewood. Use small diameter wood that burns down more cleanly. Don't burn plastics or aluminum - pack it out with the rest of the camp garbage.
- In small spike camp situations (not Lucerne), individuals should use the "cat-hole" method of disposing of human waste. Toilet seats should be located a minimum of 200 feet from water sources. Holes should be dug 6-8 inches deep.
- In large or long term spike the camps use helicopters, boats, or pack stock to deliver portable backcountry latrines and remove human waste if necessary. If the camp does not have adequate pack, boat, or air support for human waste management, establish community latrines well away from water sources and common areas. Use human waste bags, if necessary

### *Dipping and Drafting*

- No cross-dipping between water bodies. All buckets or snorkels should be cleaned, inspected, and dried in the sun if they must be used between lakes. Dipping in small lakes must be pre-approved by the READ or AA.
- When drafting, use already disturbed areas for stream access (road crossings, dispersed campsites) to reduce the need for riparian vegetation clearing.
- Use screens (3/32" inch) for all pumping operations.
- Use containment pads and basins under pumps and fuel cans. Ensure a spill kit is present with every operating pump.

### *Invasive Species*

- The fire is burning within an infestation of common crupina, a WA State Class A Noxious weed. Prevent spread of crupina off site – plan to wash hose and other equipment. Request fire fighters brush boots before boarding boat or before entering National Park Service Land.
- Inspect slings and remove all plant/soil material prior to use.
- Ensure all camps, staging areas, helispots and cargo areas are free of invasive plants to prevent spread to un-infested areas.
- Weed wash all vehicles, including boats, when they arrive to the incident and when demobed.

#### *Fisheries /Aquatic Recommendations*

- If trees must be felled in riparian areas for suppression or safety reasons, fell them toward streams where possible and minimize bucking where possible.
- Non-mechanized suppression activities are recommended within Riparian Reserves (150-300 ft from stream channel). For example, consider hand lines instead of dozer lines when feasible.

#### *Retardant Use*

- Retardant avoidance areas are present in the fire suppression area for both aquatic and terrestrial species.
- Track all retardant drops – locations and amounts.
- Report all mis-applications ASAP to READ. Monitoring and reporting of misapplications is required.

#### *Wet Meadows*

- No line or other disturbance in wet meadows in the Summer Blossom area (east of South Navarre campground above and below the 8200 road) and at Coyote and Poison Springs at the headwaters of their respective creeks.

#### *Dry Meadows*

- Minimize disturbance from staging and parking areas in dry meadows. These areas recovery slowly and are vulnerable to invasive plant infestation.

#### *White Bark Pine*

- Avoid cutting white bark pine whenever possible. Needles of 5 keep it alive! Ask READ for help with ID.

#### *Burnout operations*

- Plan to protect whitebark pine of all ages and mature cold and moist forest during burnouts. READ consultation and line officer approval is required for burn plans that include these forest types.
- During burnouts modify firing to retain large trees, large snags and large down wood in forests whenever possible.
- Minimize total acres burned in burnouts.
- Incorporate typical resource protection measures used in RX burning whenever it is safe and practical to do so (such as retention of green islands in moist areas).
- Provide a map of areas that were burned as part of the burnout operation (for use in emergency consultation).
- If cultural resources are discovered during suppression activities, leave on site and notify READ.

# PIONEER US-WA-SES-000173

## Demob List for Tuesday 7/16/2024

CREWS			
C-28	0730	CR2I	OWF ENTIAT
EQUIPMENT			
E-192	0730	ENG5	E4406 - WA - SES
E-193	0800	ENG5	WA-SES - 4501
OVERHEAD			
O-201	0900	THSP	ODENRIDER, DUKE
O-309	0700	EMPF	MCCALL, BENJAMIN JOHN
O-331	0730	HEQB	REED, BRANDON G
O-332	0730	HEQB	WEINKE, ERIC RYAN
O-333	0800	HEQB	NEUMEIER, JED
O-344	0700	FELB	HARVEY, JACOB TYLER
O-351	0830	RCDM	MORGAN, ROBERT W
O-357	0715	EMPF	HENDRON, SEAN
O-361	0730	HEQB	DOWDY, THOMAS C
O-368	0715	HEQB	BINGHAM, COLE
O-369	0700	TFLD	GIDDINGS, MARY K
O-381	1900	HEBM	MERRITT, WILLOT
O-410	0845	PIO3	MONTGOMERY, ROBERT
O-467	1500	RESL	VOLK, CHRIS

## Demob List for Wednesday 7/17/2024

OVERHEAD			
E-97	0730	STK1	VEGETATION SOLUTIONS
O-198	0900	THSP	PREHEIM, STEPHANIE
O-249	0730	TFLD	HARPER, MARK THOMAS
O-257	0730	TFLD	MCDONALD, CRAIG J
O-352	0715	SOFC	CRODDY, KRIS
O-358	0700	EMPF	WILDLAND MEDICS
O-423	0715	TFLD	HAVERKAMP, BRYCE DANIEL

## Demob List for Thursday 7/18/2024

OVERHEAD			
O-339	0800	HMGB	FLOWERS, TRAVIS
O-338	0800	HMGB	KNOTT, MELINDA CHRISTINE
O-340	0800	HECM	AGLIRA, FRANK ANTHONY
O-341	0800	HECM	URBANOWSKI, BENJAMIN THOMAS
O-353	0700	SOFC	BORDELON, PHILIP
O-378	0830	ABRO	GEISLER, CORY
O-381	0830	HEBM	MERRITT, WILLOW

**Be sure to use the most current IAP QR Code. Any questions call Demob at 509-661-5376**



## **Check In Message**

- Please complete the virtual check-in process via the QR code on the front cover.
- You are not checked in until you provide the following:
  - 1) Red Cards
  - 2) Roster/Manifest
- Please email documents to: [2024.pioneer.checkin@firenet.gov](mailto:2024.pioneer.checkin@firenet.gov)

Any Questions:

Phone: 509-661-5372

Email: [2024.pioneer.checkin@firenet.gov](mailto:2024.pioneer.checkin@firenet.gov)

---

## **Demob Message**

- Fliers complete the “Air Travel Request” via the QR code on the front cover 72 hours prior to flight date.
- Return supplies to the Cache.
- Return radios, antennas, etc., to Communications.
- All contract equipment and vehicles driven in fire area will need to do weed wash.
- Contact Finance about closing out your paperwork.
- Once the above items have been completed, SCAN the QR code on the front cover and complete the demob questions.

Any Questions:

Phone: 509-661-5376

Email: [2024.pioneer.demob@firenet.gov](mailto:2024.pioneer.demob@firenet.gov)



## Human Resource Message

### **Pioneer Fire July 16, 2024**

Did you know that smiling and laughing can help your body fight off stress?

A smile triggers your brain to release tiny molecules called neuropeptides and neurotransmitters that help reduce stress. Some studies suggest that smiling and laughter can help us recover faster from stress, reduce our heart rate, and possibly even act as a mild pain reliever.

So, keep spreading the smiles and be sure to keep hydrating.

*A SMILE IS HAPPINESS YOU'LL FIND RIGHT UNDER YOUR NOSE.*

Margaret Dietrich – Human Resources Cell: 360-701-3154

Union Representation Local 34, Katijo Maher  
360-677-2414 Katijo.Maher@usda.gov



# Finance Message



Scan this QR code to submit documents to finance.



SUBJECT: *Include Key Word **TIME** for Overhead, Crews & Cooperators*

SUBJECT: *Include Key Word **EQUIPMENT** for Contract Resources*

Phone: 484-501-1835

Finance Email: [2024.pioneer.finance@firenet.gov](mailto:2024.pioneer.finance@firenet.gov)

**Please submit the below listed documents to the finance for Check-in, Daily processing and Demob.**

Overhead, Crews & Cooperator Resources	Contract Resources
<ul style="list-style-type: none"> <li>• <b>Check-In:</b> Crew Manifest, Cooperative Agreement (if applicable), AD Hire Letter, Resource Order</li> <li>• <b>Daily:</b> Crew Time Report (CTR), Shift Tickets</li> <li>• <b>Demob:</b> Signed OF288, Final Equipment Use Invoice (Cooperator). If you don't have a way to sign you must come to finance.</li> </ul>	<ul style="list-style-type: none"> <li>• <b>Check-In:</b> Resource Order, Contract/VIPR Agreement (make sure you have your UEI), Pre-Inspection, Crew Manifest</li> <li>• <b>Daily:</b> Shift Tickets, receipts (fuel issues, claims, etc.)</li> <li>• <b>Demob:</b> Contractor Evaluations, Final Shift Tickets and receipt(s) for Addition/Deductions, Post-Inspection, Final Signed Invoices. If you don't have a way to sign you must come to finance</li> </ul>

## REMINDERS

- ★ PLEASE SHOW YOUR LUNCH BREAK
- ★ PLEASE USE MILITARY TIME (0001-2400)
- ★ WHEN CLAIMING HAZARD PAY YOU MUST INCLUDE THE SUPPRESSION ACTION BEING PERFORMED. THIS INCLUDES OPERATIONS WHICH DIRECTLY SUPPORT CONTROL OF FIRE (E.G., ACTIVITIES TO EXTINGUISH THE FIRE, FIREFIGHTING, GROUND SCOUTING, SPOT FIRE PATROLLING, SEARCH AND RESCUE OPERATIONS, AND BACKFIRING).
- ★ CTRS SHOULD BE NAMED AS: CTR\_RO#\_YYMMDD-DD (EX: CTR\_O235\_240605-07)
- ★ SHIFT TICKETS SHOULD BE NAMED AS: ST\_RO#\_YYMMDD-DD (EX: ST\_E5\_240624-27)
- ★ PLEASE MAKE SURE YOU SEE FINANCE AND MEDLS FOR MINOR INJURIES. AGENCY PEOPLE WILL NOT HAVE CLAIMS PAID IF THEY DON'T FOLLOW PROTOCOLS.
- ★ **FOR AN EXPEDIANT DEMOBING PROCESS PLEASE MAKE SURE YOU HAVE NO OUTSTANDING CLAIMS, ALL TIME AND REQUIRED CHECK IN DOCUMENTS HAVE BEEN SUBMITTED BEFORE YOU COME TO FINANCE TO CHECK-OUT.**

# PIONEER FIRE LOGISTICS MESSAGE

	ICP @ MANSON	LUCERNE FOB
Kitchen	Breakfast 0530-0830 Dinner 1730-2100	Breakfast 0600-0900 Dinner 2030-2130
Lunch/Water/Ice	0500-2100	Pick up with breakfast
Shower	0500-1200 1400-2200	0500-1200 1400-2200
Adventure Medic Trailer	0530-2200	
Laundry	0500-2200	
Supply	0600-2200	0600-2200
Ordering	0600-2200	
Fuel Tender	0600-2030	
Ground Support	0600-2200	
Weed Wash	0700-1400 1600-2000	

**Note:** For resources traveling up-lake, there is no cell service in many areas. It is recommended that you set up WiFi calling on your phone prior to leaving cell service.

## CONTACT INFORMATION

UNIT	EMAIL	PHONE
Communications	(none)	(208) 891-8093
Finance	2024.pioneer.finance@firenet.gov	(484) 501-1835
Ordering	2024.pioneer.ordering@firenet.gov	(484) 501-1821
Ground Support	(none)	Dave (509) 688-7144 Tom (360) 520-5232
Check-In	2024.pioneer.checkin@firenet.gov	(509) 661-5372
Demob	2024.pioneer.demob@firenet.gov	(509) 661-5376
Situation	2024.pioneer.situation@firenet.gov	
Resources	2024.pioneer.resources@firenet.gov	
Planning	2024.pioneer.plans@firenet.gov	
Documentation	2024.pioneer.docs@firenet.gov	



Team 12 Line Supply Order			Order#		
Deliver To Location/Time (Division/Drop Point,			Deliver Method Driver, Helo, DIVS, pick up		
Date & Time Order Placed			Delivery Method (Driver/Helo/DIVS)		
Order received in Communications by (name & time)			Ordered by (name & position)		
Order received in Supply by (name & time)			Ground Contact Person		
Order received in Ground Support by (name & time)			Contact Frequency		
Order received in Helibase by (name & time)			Special Instructions		
Order shipped to line by (name & time)					
#	Item	Amount	#	Item	Amount
1	Meals #1842 MRE 12/cs		33	Bath in a Bag, Large #0712	
2	Water #0048 5 gal cubies		34	Bath in a Bag, Small #0206	
3	Gatorade 24/cs		35	Coffe Kit #0480	
4	Batteries, AA #0030 24/pg		36	Coffee 3lb Can	
5	Batteries, AAA #7471 24/pg		37	Folding Tank 1500 gal #0664	
6	Gas Unleaded #0607 5 gallon		38	Pumpkin 3000 gal #0568	
7	Diesel #0607 5 gallon		39	Backpack Pump #0909	
8	2 Cycle Oil # 7724 5 gal mix/Mark3		40	Mark III Pump + Kit #0148	
9	2 Cycle Oil # 3444 1 gal mix		41	Lightweight Pump + Kit #8606	
10	Bar Oil #1880 1 gallon		42	Volume Pump + Kit #1222	
11	Bar Oil #1869 1 quart		43	Hose - 1 1/2" #1239 100' LG	
12	Shovel #0171		44	Hose - 1" #1238 100' LG	
13	Pulaski #0146		45	Hose - 3/4" #1016 50' LG	
14	Mcleod #0296		46	Reducer - 1 1/2" to 1" #0010	
15	Combi #1180		47	Reducer - 1" to 3/4" #0733	
16	Chainsaw Kit #0340		48	Gated "Y" - 1 1/2" #0231	
17	Drip Torch (empty) #0241		49	Gated "Y" - 1" #0259	
18	Fussee #0105		50	Gated "Y" - 3/4" #0904	
19	Sleeping Pad #1566		51	In-line Tee - 1 1/2" #0230	
20	Sleeping Bag #0022		52	Nozzle KK - 1 1/2" #1082	
21	Fly Tent #0070		53	Nozzle KK - 1" #1081	
22	Plastic Sheeting #0143		54	Nozzle - 3/4" #0136	
23	Parachute Cord #0533		55	Nozzle - Forester - 1" #0024	
24	Fiber Tape #0222		56	Sprinkler Kit #1048	
25	Garbage Bags #0021		57		
26	Leadline 3000lb #0528		58		
27	Cargo Net 3000lb #0531		59		
28	Swivel 3000lb #0526		60	Team 12 Hose Lay Kit	
29	Slingable Bag 72 Gal Blivet #0426		61		
30	Foam 5 gal #1145		62		
31	Toilet Paper #0142		63		
32			64		



Team 12 Hose Lay Kit	
Item	Amount
1 1/2 in. synthetic hose	1000 ft.
1 in. synthetic hose	500 ft.
3/4 in. garden (toy) hose	500 ft.
1 1/2 in. gated wye	5EA
1 1/2 - 1 in. reducer	5EA
1 in. combination nozzle	5EA
1 in. - 3/4 in. reducer	5EA
3/4 in. valve, shutoff, ball	5EA
3/4 in. nozzle	5EA
3/4 in. gated wye	5EA

SPRINKLER KIT NFES# 1048	
Item	Amount
Sprinkler head w/ couplings	4EA
3/4 in. garden (toy) hose	250 ft
1 1/2 in. x 1 1/2 in. x 1 in. tee	4EA
1 in. - 3/4 in. reducer	4EA
1 1/2 in. - 1 in. reducer	1EA
3/4 in. gated wye	2EA
3/4 in. valve, shutoff, ball	4EA
3/4 in. nozzle	1EA
3/4 in. pressure regulator	4EA
3/4 in. nozzle, plastic 60 GPM	1EA
10 in. adjustable wrench	1EA

LINE ORDER PROCESS: Line orders from the field should go through the Communications Unit via radio (primary) or 24-hour phone number (208) 891-8093. All other supply requests should be submitted in person to the Supply Unit.

## BOAT DIVISION INFORMATION

Transportation for supplies and personal up and down lake Chelan

**For significant supply or equipment transportation it is preferred requests arrive 48 hours in advance**

\*\* PLEASE USE THE TEMPLATE BELOW TO REQUEST BOAT TRANSPORTATION \*\*

Boat Group Contact Information:

Sam Steinshouer, DIVS, (509) 675-5008 or [sam.steinshouer@dnr.wa.gov](mailto:sam.steinshouer@dnr.wa.gov)

Tosten Kulaas, DIVS (T), (509) 699-6387 or [tkulaas@blm.gov](mailto:tkulaas@blm.gov)

<b>GENERAL MESSAGE (ICS 213) - Fire name: Pioneer</b>		
1. <b>TO:</b> Sam Steinshouer, DIVS / Tosten Kulaas DUVS (T)		
2. <b>FROM:</b> (Name and Position)		
3. <b>Subject:</b> Boat Transportation	DATE:	TIME:
4. <b>Message:</b>		
O# E# or C# _____		
Departure Date _____		
Departure Location (Chelan / Fields Pt. / Lucerne / Stehekin) _____		
Arrival Location (Chelan / Fields Pt. / Lucerne / Stehekin) _____		
Email Address for Confirmation _____		
** If unable to receive email, please note and tickets will be email to either your supervisor or Boat Coordinator		
Phone Number _____		
FERRY TICKETS NEED TO BE SUBMITTED TO BOAT DIVS BY 1600 THE DAY PRIOR TO DESIRED DEPARTURE		
SIGNATURE:		POSITION:

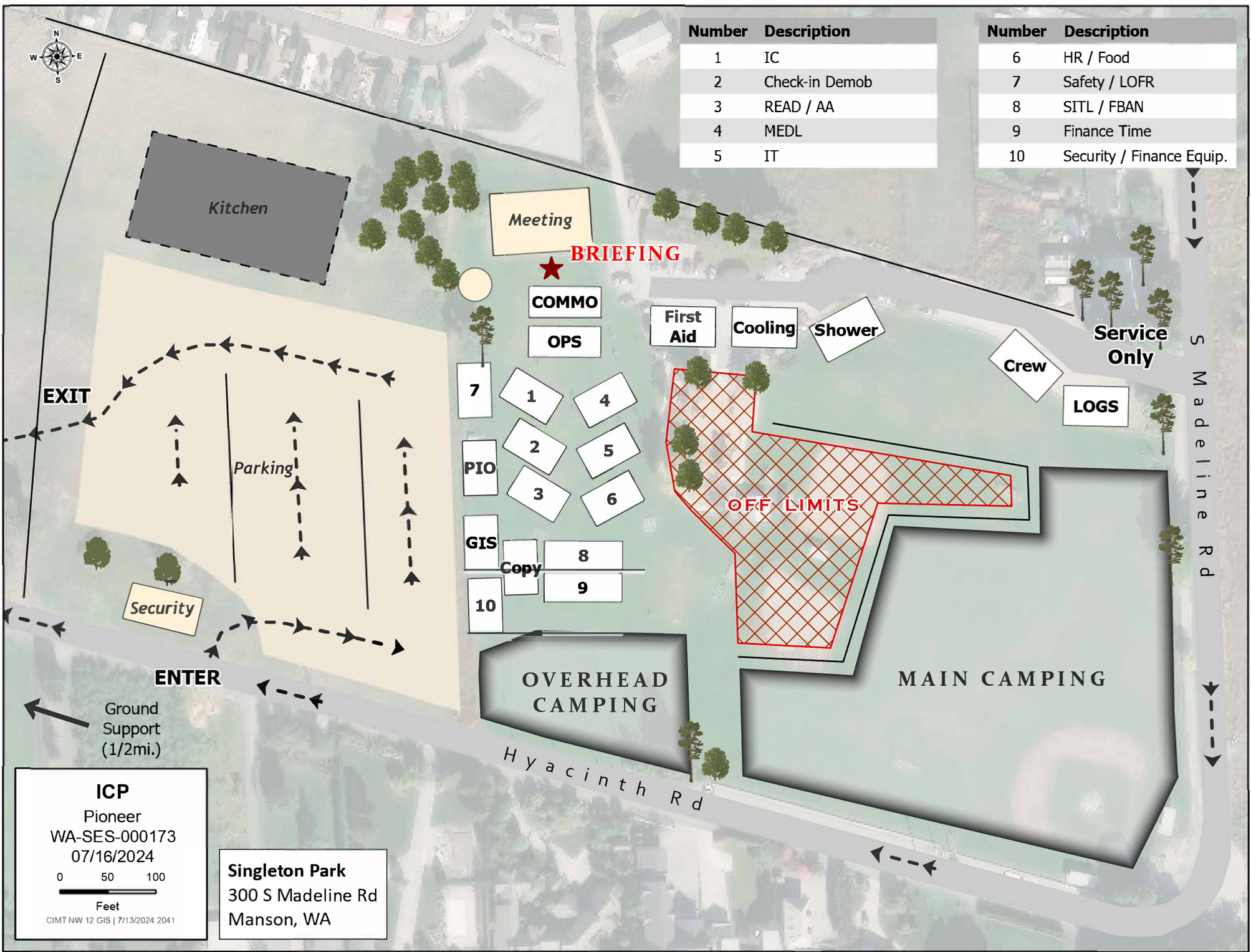
Request #	Description	Capacity (# people)	Night Operations
E-1	TBOT WA-NCP	5	
E-3	TBOT CHELAN CO F&R #7	6	YES
E-12	TBOT CHELAN RANGER DISTRICT	8-10	
E-43	TBOT LK CHELAN LLAMAS & UPTAKE ADVENTURES	8-10	
E-91	TBOT DNR MUD PUPPY	8	YES
E-98	TBOT CHELAN COUNTY SHERIFF	12	
E-120	TBOT PILGRIM LAKE SERVICES	5	
E-121	TBOT BRINNON FIRE	6	YES
E-201	TBOT SEA FALCON	6	
E-202	TBOT RIVER RUNNER	6	YES
E-295	TBOT PUGET PROTECTOR	18-20+	YES
E-296	TBOT FRV #9	16-18	YES
E-297	TBOT PIONEER PROTECTOR	18-20+	





Number	Description
1	IC
2	Check-in Demob
3	READ / AA
4	MEDL
5	IT

Number	Description
6	HR / Food
7	Safety / LOFR
8	SITL / FBAN
9	Finance Time
10	Security / Finance Equip.



**ICP**  
 Pioneer  
 WA-SES-000173  
 07/16/2024  
 0 50 100  
 Feet  
 CIMT NW 12 GIS | 7/13/2024 2041

**Singleton Park**  
 300 S Madeline Rd  
 Manson, WA



**EXIT**

Fuel

Order

Supply

ICE

NAVY

Lunch

Parking

Drivers

**ENTER**

ICP  
(1/2mi.)

S  
Q  
u  
e  
t  
i  
l  
q  
u  
a  
s  
o  
o  
n  
R  
d

SLEEPING

SLEEPING

SLEEPING

GSUL

HW

**Ground Support**

Pioneer

WA-SES-000173

07/16/2024

0 50 100

Feet

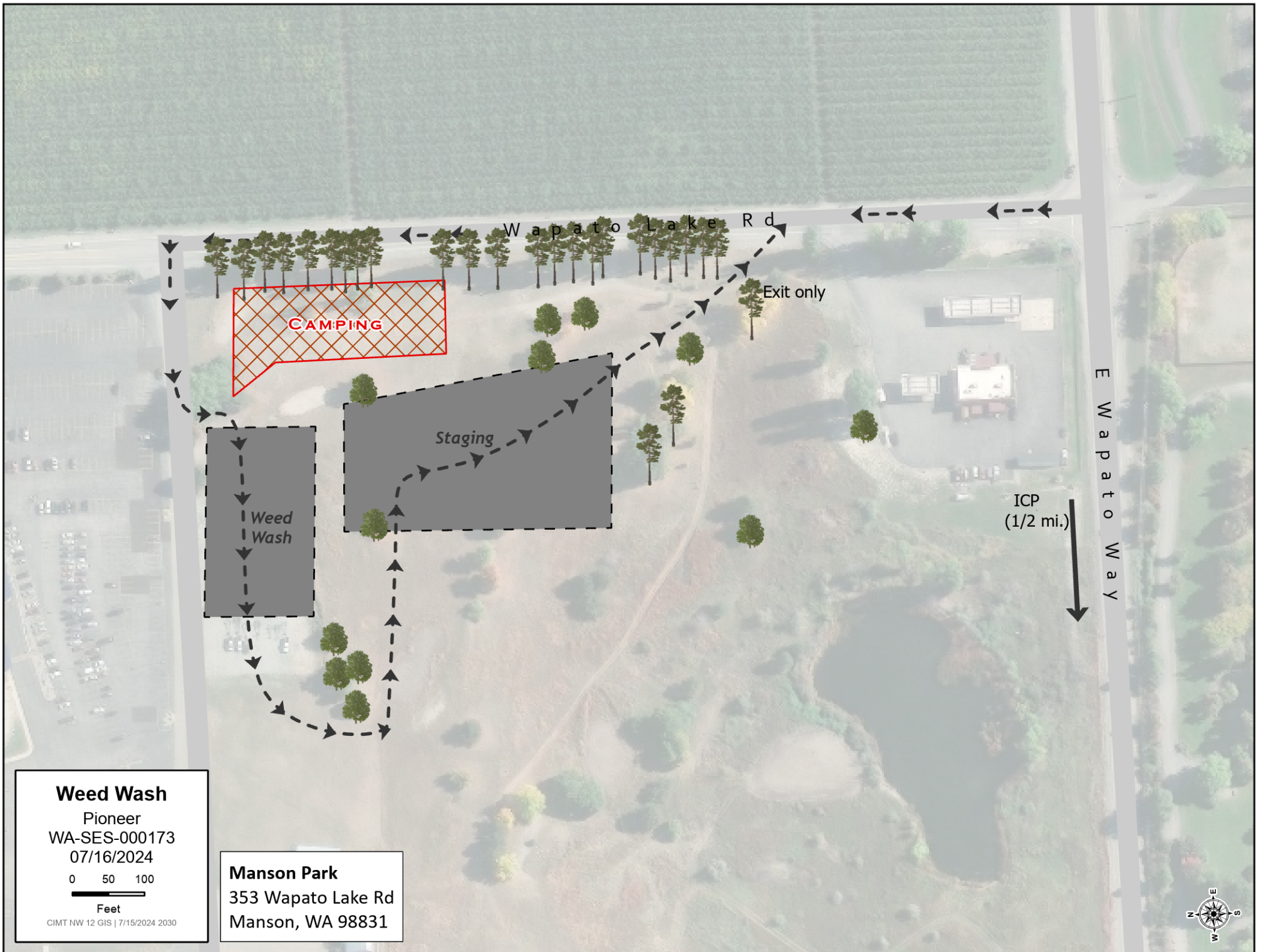
CIMT NW 12 GIS | 7/13/2024 2041

**a.k.a. Quentin Tarantino Village**

196 S Quetilquasoon Rd

Manson, WA





**Weed Wash**

Pioneer  
 WA-SES-000173  
 07/16/2024

0 50 100

Feet

CIMT NW 12 GIS | 7/15/2024 2030

**Manson Park**

353 Wapato Lake Rd  
 Manson, WA 98831

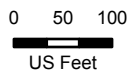


# 25 Mile Parking

Pioneer

WA-SES-000173

07/16/2024



*Parking*

**NO  
PARKING**

**NO PARKING**

*Parking*

Please avoid parking in lots owned and managed by 25 Mile State Park. Approved parking is in the lot on the East side of Hale Rd.



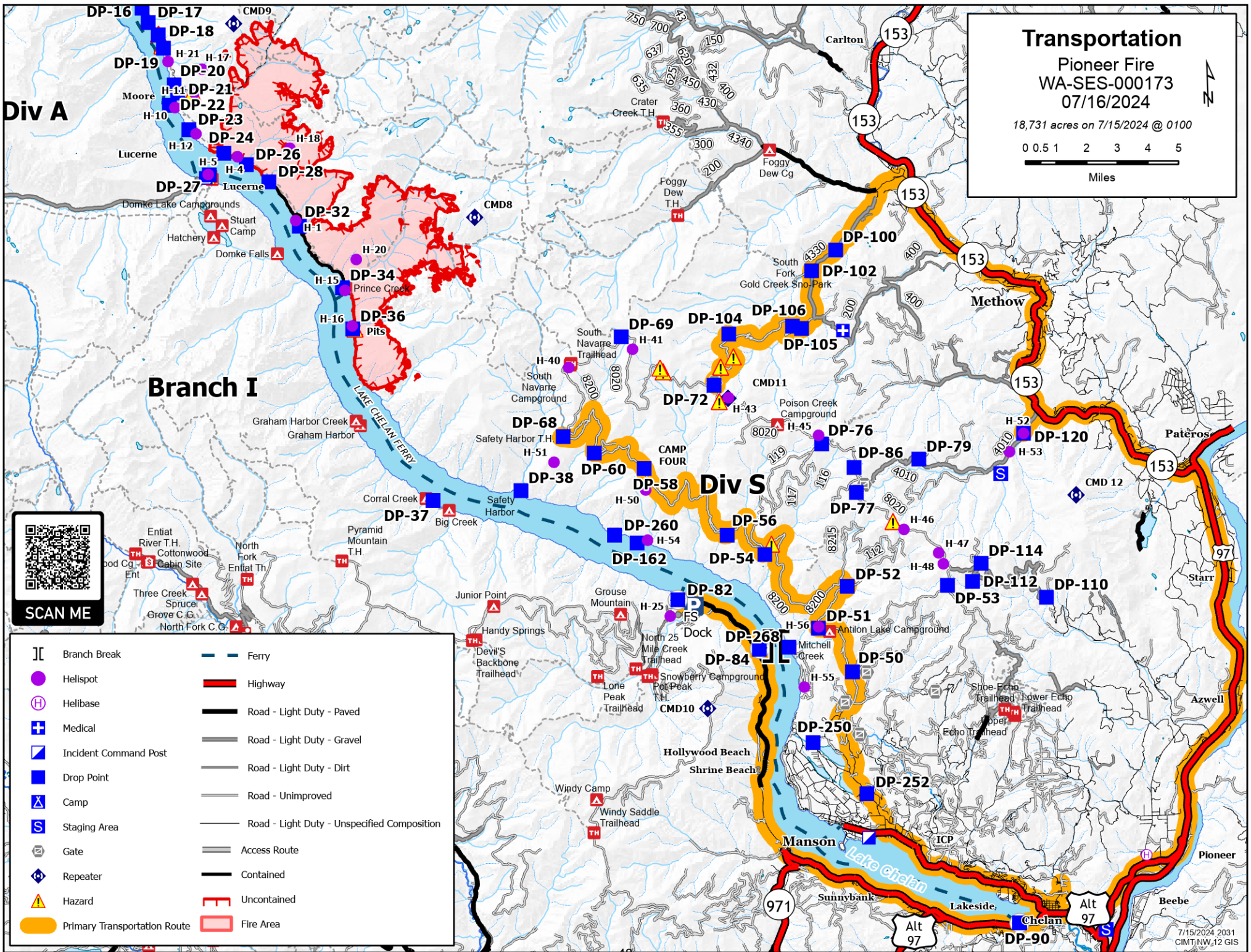
# Transportation

Pioneer Fire  
WA-SES-000173  
07/16/2024

18,731 acres on 7/15/2024 @ 0100

0 0.5 1 2 3 4 5

Miles



SCAN ME

- [ ] Branch Break
- Helispot
- ⊕ Helibase
- ⊕ Medical
- ⊕ Incident Command Post
- Drop Point
- ⊕ Camp
- ⊕ Staging Area
- ⊕ Gate
- ⊕ Repeater
- ⚠ Hazard
- ▬ Primary Transportation Route
- Ferry
- ▬ Highway
- ▬ Road - Light Duty - Paved
- ▬ Road - Light Duty - Gravel
- ▬ Road - Light Duty - Dirt
- ▬ Road - Unimproved
- ▬ Road - Light Duty - Unspecified Composition
- ▬ Access Route
- ▬ Contained
- ▬ Uncontained
- ▬ Fire Area





## **Pioneer Fire-Manson ICP**

### In Camp Medical Procedure

#### **If Red or Yellow**

Yell for help and stay with patient

Provide first aid as appropriate

Call 911

Contact Pioneer communications at **208-891-8093** or by radio

#### **If Green**

Go to Adventure Medical Trailer for evaluation and treatment

(Near playground)



## Public Information

**PHOTOS:** Your fireline photos help us build understanding with the public. Community members want to see what you see because you go where others can't safely go. We are looking for any pictures of the fire line, mop-up work, and **fire resources working on the fire line in their PPE**. You can send photos to:

Email: [2024.pioneer@firenet.gov](mailto:2024.pioneer@firenet.gov)

Text: 509-388-1475

As always, make sure you're wearing all your PPE and conveying a professional, caring, and respectful attitude toward the homes and land in this community. Thanks for helping us out!

**LOST AND FOUND:** We have a few items in the information trailer. If you have lost something, stop by and see if it has been turned in. If you find something left behind, you can turn it in to us.

**MAIL:** Public Information Officers will help facilitate mail. If you need to receive mail while at this incident, please use this format and address:

Name and resource order number

Pioneer Fire

300 Madeline Ave

Manson, WA 98831

**QUESTIONS FROM THE PUBLIC:** If community members have questions that you do not feel equipped to answer professionally, please give them our fire information line: 541-861-5808.

The public may access information by scanning this QR code.





# EMERGENCY PLAN INCIDENT WITHIN AN INCIDENT

## ON SCENE INCIDENT COMMANDER

In the event of an accident or medical incident of any size, your primary responsibility is to ENSURE that the victim(s) receive prompt and effective Triage, Treatment, Extrication and Transport.

- **ENSURE THE MEDICAL INCIDENT REPORT IN THE INCIDENT ACTION PLAN IS BEING USED AND FOLLOWED- \*IF DETERMINED TO BE A GREEN, DO NOT DECLARE EMERGENCY TRAFFIC AND ONLY COMPLETE LINE 1-4 ON MIR\*.**
- Conduct size-up of the incident nature of accident, number type of resources involved, latitude and longitude location (DD°MMM.MM format): notify incident communications center and supervisor, request assistance as needed.
- Order and coordinate medical and support response to the accident.
- Evaluate special needs (law enforcement, haz mat, etc.).
- Clear the command frequency if medical emergency, coordinate with incident communications and air attack for air medical transportation needs.
- Preserve and photograph the scene for accident investigation.
- Remain aware of surroundings and the status of the main incident (delegate personnel to monitor the main fire) to ensure safety of medical treatment personnel.
- Until relieved, supervise and manage all personnel involved at the incident scene.



# MEDICAL PLAN (206 WF)

1. Incident/Project Name			2. Operational Period				
<b>Pioneer Fire</b>			Date/Time: <b>07/16/24 0700-2100</b>				
3. Ambulance Services							
Name	Complete Address	Phone	Advanced Life Support (ALS)				
			Yes	No			
Lake Chelan EMS	Chelan, WA	911	X				
Douglas/Okanagan County Fire	Brewster, WA	911		X			
4. Air Ambulance Services							
Name	Phone/Channel	Frequency, Type of Aircraft & Capability					
Life Flight - Brewster	1-800-232-0911 911	VMED 29, Rotor, ALS, 24 hr					
Airlift NW - Wenatchee	1-800-426-2430 911	VMED 29, Rotor, ALS, 24 hr					
Medivac Ship	Command 7,8,9,10,11,12 (Linked)	VMED 29, Rotor, BLS, Daytime 971-762-8575 pioneer helibase 47 51.96N 119 55.56W					
Mount Rainer Short Haul	Command 7,8,9,10,11,12 (Linked)	VMED 29, Rotor, BLS, Daytime, Short Haul					
Snohawk 10 - Snohomish	1-800-258-5990 911	VMED 29, Rotor, ALS, Daytime, Hoist					
Spokane County Hoist - Spokane	1-509-532-8930 911	VMED 29, Rotor, ALS, 24 hr, Hoist Daytime Only					
5. Hospitals							
Name	Degrees Decimal Minutes	Travel Time From Fire		Phone	Helipad		Level of Care
		Air	Boat		Yes	No	
Lake Chelan Health 110 S. Apple Blossom Drive Chelan WA	Lat: 47° 50' 20 N	30 Min	3 Hr	509-683-2474		X	Level IV Trauma
	Long: 119° 59' 20 W						
Central Washington Hospital (Confluence Health Central Campus) 1201 S. Miller Wenatchee WA	Lat: 47° 24. 43 N	30 Min	4 Hr	509-433-3115	X		Level III Trauma
	Long: 120° 19. 28 W						
Harborview Medical Center 325 9 <sup>th</sup> Ave Seattle WA	Lat: 47° 36. 24 N	1.5 Hr	6 Hr	206-744-4025	X		Level I Trauma Burn Center
	Long: 122° 19. 45 W						
<b>ICP</b>	<b>EMS Responders &amp; Capability:</b>		Diana Braun      MEDL/EMTF      509-348-0091 Ben Elkind      MEDL(T)/EMTF      503-201-2495 Morgan De Marco      RN / EMTF / MED TRAILER      973-735-3577 Jarren Bennett      EMTF/ MED TRAILER      320-390-2282				
	Equipment Available on Scene:		AED, BLS Kit, OTC Meds, Rx Meds, Urgent Care Facility				
	Medical Emergency Channel:		Command 7, 8, 9, 10, 11 (Linked)				
	ETA for Ambulance to Scene:						
	Air:		NA				
	Ground:		15 Min				
	Approved Heli-Spot:		NA				
	Lat:		NA				
	Long:		NA				
	<b>LUCERNE FOB</b>	<b>EMS Responders &amp; Capability:</b>		Londa Van Kirk MEDL/EMTF (Lucerne FOB)      360-815-7645 MEDIC 6 Steve Medina (Air/Boat Medical)      360-556-9568			
Equipment Available on Scene:		ALS Kit, AED, O2, OTC meds					
Medical Emergency Channel:		Command 7, 8, 9, 10, 11 (Linked)					
ETA for Ambulance to Scene:							
Air:		2 hr					
Water/Ground:		3 hr					
Approved Heli-Spot:							
Lat:		<b>H5 48° 12.1624' N</b>					
Long:		<b>120° 35.4476' W</b>					



## MEDICAL PLAN (206 WF)

<b>BRANCH I/II DIV A Lake Shore</b>	<b>EMS Responders &amp; Capability:</b>	<b>MEDIC 1 Christopher Jackson (DIV A)</b> 334-707-1468 <b>MEDIC 12 Ethan Biederman (DIV A)</b> 513-882-2837 <b>MEDIC 2 Michael Poe (DIV A)</b> 580-695-9363 <b>MEDIC 16 Kelly Max (Lake Shore)</b> 520-508-4486	
	Equipment Available on Scene:	ALS Kit, Monitor/Defib, O2	
	Medical Emergency Channel:	Command 7, 8, 9, 10, 11 (Linked)	
	ETA for Ambulance to Scene:		
	Air:	2 hr	
	Water/Ground:	3 hr	
	Approved Heli-Spots:		
	H1 48° 10.813' N 120° 31.925' W	H11 48° 14.492' N 120° 35.922' W	H15 48° 08.754' N 120° 29.813' W
	H10 48° 14.099' N 120° 36.782' W	H12 48° 13.381' N 120° 35.919' W	H16 48° 07.744' N 120° 29.541' W
	Lat:	NA	
	Long:	NA	

<b>BRANCH I/II Stehekin DIV D</b>	<b>EMS Responders &amp; Capability:</b>	<b>MEDIC 15 Robert Ruzala (DIV D)</b> 253-905 4304 <b>MEDIC 14 Laura Krause (Div D)</b> 360-880-3414 <b>EMT 1 Travis Braddock (DIV D)</b> 253-278-1326 <b>Paul Smith MEDL/EMTF (Stehekin FOB)</b> 541-480-9645
	Equipment Available on Scene:	ALS Kit, Monitor/Defib, O2
	Medical Emergency Channel:	Command 7, 8, 9, 10, 11 (Linked)
	ETA for Ambulance to Scene:	
	Air:	2 hr
	Ground:	3 hr
	Approved Heli-Spot:	
	Lat:	H14 48° 20.760' N
	Long:	120° 43.242' W
	<b>BRANCH IV DIV S Contingency Roads Structure/IA Staging</b>	<b>EMS Responders &amp; Capability:</b>
Equipment Available on Scene:		ALS Kit, Monitor/Defib, O2, Rescue Gear
Medical Emergency Channel:		Command 7, 8, 9, 10, 11, 12 (Linked)
ETA for Ambulance to Scene:		
Air:		2 hr
Ground:		3 hr
Approved Heli-Spot:		
Lat:		NA
Long:		NA
<b>BRANCH V</b>		<b>EMS Responders &amp; Capability:</b>
	Equipment Available on Scene:	
	Medical Emergency Channel:	Command 7, 8, 9, 10, 11, 12 (Linked)
	ETA for Ambulance to Scene:	
	Air:	2 hr
	Ground:	3 hr
	Approved Heli-Spot:	
Lat:	H25 47° 59.200' N	
Long:	120° 16. 521' W	
<b>TBD</b>	<b>EMS Responders &amp; Capability:</b>	TBD
	Equipment Available on Scene:	
	Medical Emergency Channel:	Command 7,8,9,10,11 (Linked)
	ETA for Ambulance to Scene:	
	Air:	
	Ground:	
	Approved Heli-Spot:	NA
Lat:	NA	
Long:	NA	

<b>Prepared By (Medical Unit Leader Trainee)</b>	<b>Date</b>	<b>Reviewed By (Safety Officer)</b>	<b>Date</b>
Ben Elkind	07/15/24	Marshall Brown SOFC	07/15/24
Signature: Ben Elkind		Signature: Marshall Brown	

# MEDICAL PLAN (ICS 206 WF)

Controlled Unclassified Information//Basic

## Medical Incident Report

**FOR A NON-EMERGENCY INCIDENT, WORK THROUGH CHAIN OF COMMAND TO REPORT AND TRANSPORT INJURED PERSONNEL AS NECESSARY.**

**FOR A MEDICAL EMERGENCY: IDENTIFY ON SCENE INCIDENT COMMANDER BY NAME AND POSITION AND ANNOUNCE "MEDICAL EMERGENCY" TO INITIATE RESPONSE FROM IMT COMMUNICATIONS/DISPATCH.**

Use the following items to communicate situation to communications/dispatch.

**1. CONTACT COMMUNICATIONS / DISPATCH (Verify correct frequency prior to starting report)**

*Ex: "Communications, Div. Alpha. Stand-by for Emergency Traffic."*

**2. INCIDENT STATUS: Provide incident summary (including number of patients) and command structure.**

*Ex: "Communications, I have a Red priority patient, unconscious, struck by a falling tree. Requesting air ambulance to Forest Road 1 at (Lat./Long.) This will be the Trout Meadow Medical, IC is TFLD Jones. EMT Smith is providing medical care."*

Severity of Emergency / Transport Priority	<input type="checkbox"/> RED / PRIORITY 1 Life or limb threatening injury or illness. Evacuation need is IMMEDIATE <i>Ex: Unconscious, difficulty breathing, bleeding severely, 2° – 3° burns more than 4 palm sizes, heat stroke, disoriented.</i> <input type="checkbox"/> YELLOW / PRIORITY 2 Serious Injury or illness. Evacuation may be DELAYED if necessary. <i>Ex: Significant trauma, unable to walk, 2° – 3° burns not more than 1-3 palm sizes.</i> <input type="checkbox"/> GREEN / PRIORITY 3 Minor Injury or illness. Non-Emergency transport <i>Ex: Sprains, strains, minor heat-related illness.</i>	
Nature of Injury or Illness & Mechanism of Injury		<i>Brief Summary of Injury or Illness (Ex: Unconscious, Struck by Falling Tree)</i>
Transport Request		<i>Air Ambulance / Short Haul/Hoist Ground Ambulance / Other</i>
Patient Location		<i>Descriptive Location &amp; Lat. / Long. (WGS84)</i>
Incident Name		<i>Geographic Name + "Medical" (Ex: Trout Meadow Medical)</i>
On-Scene Incident Commander		<i>Name of on-scene IC of Incident within an Incident (Ex: TFLD Jones)</i>
Patient Care		<i>Name of Care Provider (Ex: EMT Smith)</i>

**3. INITIAL PATIENT ASSESSMENT: Complete this section for each patient as applicable (start with the most severe patient)**

Patient Assessment: See IRPG page 106

Treatment:

**4. TRANSPORT PLAN:**

Evacuation Location (if different): (Descriptive Location (drop point, intersection, etc.) or Lat. / Long.) Patient's ETA to Evacuation Location:

Helispot / Extraction Site Size and Hazards:

**5. ADDITIONAL RESOURCES / EQUIPMENT NEEDS:**

*Example: Paramedic/EMT, Crews, Immobilization Devices, AED, Oxygen, Trauma Bag, IV/Fluid(s), Splints, Rope rescue, Wheeled litter, HAZMAT, Extrication*

**6. COMMUNICATIONS: Identify State Air/Ground EMS Frequencies and Hospital Contacts as applicable**

Function	Channel Name/Number	Receive (RX)	Tone/NAC *	Transmit (TX)	Tone/NAC *
COMMAND					
AIR-TO-GRND					
TACTICAL					

**7. CONTINGENCY: Considerations: If primary options fail, what actions can be implemented in conjunction with primary evacuation method? Be thinking ahead.**

**8. ADDITIONAL INFORMATION: Updates/Changes, etc.**

**REMEMBER: Confirm ETA's of resources ordered. Act according to your level of training. Be Alert. Keep Calm. Think Clearly. Act Decisively.**

Controlled Unclassified Information//Basic