



# INCIDENT ACTION PLAN

# Pioneer Fire

Thursday, July 18<sup>th</sup>, 2024

0700-2100 - Operational Period



Maps, IAP,  
Finance &  
Briefing  
Link

**WA-SES-000173**  
**USFS: PN RZ79 (1522)**  
**DOI: RZ79**  
**WA DNR: 221-LDW**

	Ground	Air
FS:		
DNR:		
OSC:		
FS AA:		
DNR AA:		


This page intentionally left blank.



## INCIDENT OBJECTIVES (ICS 202)

<b>1. Incident Name:</b>	<b>2. Operational Period: 0700-2100</b>	
PIONEER	Date/Time From: 07/18/2024 0700 THU	Date/Time To: 07/18/2024 2100 THU
<b>3. Objective(s):</b>		
<p><u>Strategic Framework</u>                      The Pioneer Fire is a full suppression fire utilizing strategies and tactics that provide the highest likelihood of success while mitigating risks to the responders and public. Extreme terrain prevents direct attack. Indirect lines are being identified and established that reduces risk to responders while protecting identified values including private and federal infrastructure and recreational values.</p>		
<p><u>Management Objectives:</u></p> <ul style="list-style-type: none"> <li>• Ensure the safety and well-being of responders and the public by making timely risk-informed decisions that align with values at risk.</li> <li>• Protect private and federal infrastructure and recreational values.</li> <li>• Foster relationships with local cooperators and the public by providing coordinated, accurate and timely information.</li> <li>• Coordinate suppression activities with READ's to identify and mitigate current and future impacts to the landscape and resources.</li> <li>• Treat each other with dignity and respect and act in a professional manner on the fire and in the communities.</li> <li>• Manage cost commensurate with values at risk by coordinating with the Agency Administrators and Incident Business Advisors.</li> </ul>		
<b>4. Operational Period Command Emphasis:</b>		
<ul style="list-style-type: none"> <li>• Implement an effective suppression strategy utilizing direct attack where and when appropriate to protect values at risk. When fire behavior, terrain or safety concerns prohibit direct attack, utilize other suppression tactics such as indirect and point protection as appropriate to reduce risk to responders. Take advantage of natural features such as breaks in fuels, topographic features, or changes in weather.</li> <li>• Establish indirect control lines with the highest probability of success which prevent fire spread into populated areas.</li> <li>• Communicate with local law enforcement officials to ensure current and potential evacuations are coordinated.</li> </ul>		
<b>General Situational Awareness:</b>		
<p>As unusually high temperatures continue in the area, responders are urged to prioritize personal safety in the heat by staying hydrated, taking breaks, and seeking shade or cooler environments.</p> <p>All incident personnel should be familiar with the Incident Response Plan and understand their role in supporting an Incident within an Incident (IWI). The Pioneer fire has unique challenges with excessive travel times and methods. Do not rely solely on one method of transport or extraction. Be mindful of weather, terrain, travel time and access limitations that could potentially cause delay in providing triage, treatment, extrication and transport of injured personnel.</p>		
<b>5. Site Safety Plan Required?</b> Yes <input type="checkbox"/> No <input checked="" type="checkbox"/>		
<b>Approved Site Safety Plan(s) Located at:</b>		
<b>6. Incident Action Plan</b> (the items checked below are included in this Incident Action Plan):		
<input checked="" type="checkbox"/> ICS 202 <input checked="" type="checkbox"/> ICS 203 <input checked="" type="checkbox"/> ICS 204 <input checked="" type="checkbox"/> ICS 205 <input type="checkbox"/> ICS 205A <input checked="" type="checkbox"/> ICS 206	<input type="checkbox"/> ICS 207 <input checked="" type="checkbox"/> ICS 208 <input checked="" type="checkbox"/> ICS 220 <input checked="" type="checkbox"/> Map/Chart <input checked="" type="checkbox"/> Weather Forecast/Tides/Currents	Other Attachments: <input checked="" type="checkbox"/> HR MESSAGE <input checked="" type="checkbox"/> LOGISTICS MESSAGE <input checked="" type="checkbox"/> ICS 214 - UNIT LOG <input type="checkbox"/> _____
<b>7. Prepared by:</b> JILL JOHNSON	<b>Position/Title:</b> PSCC	<b>Signature:</b> <i>Jill Johnson</i>
<b>8. Approved by Incident Commander:</b>	<b>Name:</b> JEFF DIMKE	<b>Signature:</b> <i>Jeff Dimke</i>
<b>ICS 202</b>	<b>IAP Page</b>	<b>Date/Time:</b> 07/17/2024 2000

## ORGANIZATION ASSIGNMENT LIST (ICS 203)

<b>1. Incident Name:</b>		<b>2. Operational Period:</b> 0700-2100	
PIONEER		Date/Time From: 07/18/2024 0700	THU
		Date/Time To: 07/18/2024 2100	THU
<b>3. Incident Commander(s) and Command Staff:</b>			
IC/UC	JEFF DIMKE		
DEPUTY	BOB SHINDELAR	MEDICAL UNIT	DIANA BRAUN; LONDA VAN KIRK; BEN ELKIND(T) CASS JACKSON(T);
SAFETY OFFICER	TAIJA CORSO; JOSH NORTHRUP JUSTIN RANDALL (T)	SECURITY UNIT	RON TAYLOR
INFORMATION OFFICER	JOEL BRUMM; HEATHER APPELHOF	FOOD UNIT	KAREN HAUTER DEBBY BERDINE; STEVE BALES (T)
LIAISON OFFICER	JEFF SEVIGNEY; JON MEIER JOHN JOHNSON (T); COLLIN HAFHEY (T)	<b>7. Operations Section:</b>	
HUMAN RESOURCE SPECIALIST	MARGARET DIETRICH	OPS SECTION CHIEF	AARON ROWE, LONNIE NEWTON (T)
		PLANNING OPS SECTION CHIEF	KURT RANTA
		STRATEGIC OPS SECTION CHIEF	TONY ENGEL
<b>4. Agency/Organization Representative(s):</b>			
<b>Agency/Organization</b>	<b>Name</b>		
USFS OKA/WEN AGENCY ADMIN	JACOB WINN; PAUL WILLARD (T) BENJAMIN GOODIN (T)		
DNR AGENCY ADMIN	LARRY LEACH; WYATT LEIGHTON	DIVISION/GROUP	BOAT
NPS AGENCY ADMIN	DON STRIKER		SAM STEINSHOUER, TOSTEN KULAAS (T)
NPS AGENCY REP	DENISE SHULTZ	<b>Branch</b>	<b>I/II</b>
USFS LEAD READ	BRIGITTE RANNE	BRANCH DIRECTOR	JESSE BOHNSACK, CODY ACORD (T)
NPS LEAD READ	JACK OELFKE	DIVISION/GROUP	A
			SHAWN OTTO, CHRIS RAMISKEY (T)
		DIVISION/GROUP	D
			BRETT JOHNSON, PAUL KIMBALL (T)
<b>5. Planning Section:</b>			
CHIEF	HOWARD JOHNSON; JILL JOHNSON	<b>Branch</b>	<b>IV</b>
RESOURCES UNIT	JENNIFER NORTON	BRANCH DIRECTOR	TIMOTHY BARNETT
SITUATION UNIT	STEPHEN SEWELL (T)	DIVISION/GROUP	S
DOCUMENTATION UNIT	DEIDRE SMITH		MATT KENNEDY, JULIUS JACOBSEN (T)
DEMOBILIZATION UNIT	MIKE HESTON	DIVISION/GROUP	CONTINGENCY
FIRE BEHAVIOR ANALYST	STEVE ZIEL; DON STRAND		HEIDI SPRENGER, ROY BOOTS (T)
GIS SPECIALIST	SHAWN BUSHNELL; MIKE TONKEL DEAN RAFTIS	DIVISION/GROUP	ROADS
TECHNOLOGY SUPPORT SPECIALIST	GEORGE JENKINS; LIBBY EVERETT (T) JUSTIN LEACH (T)		FIDEL VERDUZCO, ERIN SPRINGER (T)
INCIDENT METEOROLOGIST	BOB TOBIN	DIVISION/GROUP	STRUCTURE/IA
AIR RESOURCE ADVISOR	TOM PIERCE		JON STONELAKE, NICK WIGLE (T)
<b>6. Logistics Section:</b>			
CHIEF	KEVIN HAUGHTON; THAD FRATER (T) WHIT SPENCER; BRIAN MCGINLEY; MIKE POST	<b>7b. Air Operations Branch:</b>	
SUPPLY UNIT	JOHN KAUPA	AIR OPS BRANCH DIRECTOR	PAUL BALFOUR; KELLY HEDGEPEETH(T)
FACILITIES UNIT	KAREN ZIRKLE MIKE POST; JOHN DREYER	AIR SUPPORT SUPERVISOR	TIM LYDA
GROUND SUPPORT UNIT	DAVE HARSH TOM FORTIN; HEATH KESSI (T)	<b>8. Finance/Administration Section:</b>	
COMMUNICATIONS UNIT	MISSY PARKER; CHARLES BARNES	CHIEF	CHRISTINA GOEBEL; STEVE CROW (T)
		TIME UNIT	CHERI FULLER; LARCI MILLER (T)
		PROCUREMENT UNIT	TODD POWELL; PETER BIDIGARE (T)
		COST UNIT	KAY HIGH
		INC CONTRACT PROJ INSP	ROB HECHINGER
<b>9. Prepared By:</b>	<b>Name:</b> JILL JOHNSON	<b>Position/Title:</b> PSCC	<b>Signature:</b>
ICS 203	IAP Page	<b>Date/Time:</b> 07/17/2024 2000	

## *Fire Weather Forecast*

**FORECAST NO:** 36

**PREDICTION FOR:** 24 Hr Shift

**SHIFT DATE:** Wednesday 7/18/2024

**TIME AND DATE ISSUED:** 7/17/2024 1900 hrs

**INCIDENT:** Pioneer Fire

**SIGNED:** *Bob Tobin*

Incident Meteorologist

---

**Discussion:**

**\*\*\*Heat Advisory\*\*\***

South-southwest flow will be over the region for the next few days. Several weak disturbances will move north along the Washington coast. This will likely have more of an effect on the winds, rather than bring any kind of precipitation or convection. The biggest concern is that we are expecting another warm up with temperatures 100 degrees or warmer through the weekend. Relative humidity will remain quite dry and overnight recoveries are expected to be dismal. Some relief is possible by early next week with temperatures cooling down, but remaining above normal.

**WEATHER FORECAST FOR TODAY:**

**SKY/WEATHER:** Variable clouds in the morning, then sunny, hot and dry.

**MAX TEMPERATURE:** 92 to 98 valleys/mid-slopes. 79 to 84 around 5000 feet.

**MIN RH:** 14 to 18 percent valleys/mid-slopes. 18 to 24 percent ridges.

**20 FT WINDS:**

**Lower Valleys:** Down lake, down canyon 3 to 5 mph through 1000 then southeast to southwest 5 to 10 mph gusting to 12 mph.

**Mid-slopes and Ridges:** Southwest to West 10 to 12 mph gusting to 16 mph.

**HAINES INDEX:** 3 Low.

**TRANSPORT WINDS:** Southwest 10-12 mph.

**INVERSION:** Moderate to strong low-level inversion lifting by 1000. Mixing Height 1000 ft by 1100.

---

**TONIGHT:**

**SKY/WEATHER:** Clear with areas of smoke.

**MIN TEMPERATURE:** 66 to 72 valleys/mid-slopes. 60 to 65 around 5000 feet.

**MAX RH:** 40 to 50 percent valleys/mid-slopes. 35 to 40 percent ridges around 5000 feet.

**20 FT WINDS:**

**Valleys/Lower Slopes:** Northwest and down the lake 6 to 10 mph in the evening gusting to 20 mph.

**Mid-Slopes and Ridges:** West to northwest 10 to 12 mph gusting to 15 mph.

**INVERSION:** Developing after 2000 hrs. to near 1000 ft. Thermal belt activity likely at the top of the inversion.

**Friday:**

**SKY/WEATHER:** Sunny. Smokey through noon.

**MAX TEMPERATURE:** 92 to 97 valleys/mid-slopes. 77 to 82 around 5000 feet.

**MIN RH:** 12 to 15 percent valleys/mid-slopes. 18 to 24 percent ridges.

**20 FT WINDS:**

**Lower Valleys:** Northwest in the morning...becoming south-southwest after 1000 5 to 10 mph gusting to 15 mph.

**Mid-slopes and Ridges:** Southwest to West 10 to 12 mph gusting to 16 mph.

**HAINES INDEX:** 3 Low.

**TRANSPORT WINDS:** SWW 10 to 12 mph.

---

**Boating concerns Tuesday** Down lake winds until about 1000 then shifting to up-lake. Expect bumpy conditions across the lake in the afternoon. Wave heights generally less than 2 feet with the up-lake winds.

**Aviation concerns Monday:** Temperature near 25C at 4000 feet for load calcs. Thermal turbulence likely with differential heating due to slope/terrain.

Weather observations can be texted to 509-844-7003 or emailed to bubba57@comcast.net.

## Fire Behavior Forecast # 37

<b>Name of Incident:</b> <b>Pioneer</b>	<b>Administrative Unit:</b> SE Region DNR / Okanogan-Wenatchee NF
<b>Date &amp; Time Issued:</b> July 17, 2024 @ 1900	<b>Operational Period:</b> <u>DAY</u> 07/18/2024
<b>FBAN:</b> Steve Ziel	<b>Signed:</b> /s/ <i>Steve Ziel</i>

***Southerly winds with continued hot/dry weather brings another very active fire behavior day. Rapid fire spread will occur with wind and/or slope alignment. Expect very active burning conditions between 1200 to 2000 hours. Live fuels are starting to contribute to fire intensity on mid and lower slopes; fire spread rate is being dominated by fine dead fuels and cured grasses. Lake effect winds (up/ down lake) dominate lower and mid slopes; the fire is on a dry S/SW aspect with steep side drainages that provide strong upslope winds. Wind/slope alignment and/or lake wind will influence and accelerate fire rate of spread and direction.***

**Weather Summary**  
\*\*See attached Fire Weather Forecast\*\*

### Fire Behavior Summary

***Fuels in the fire area*** are composed of a mosaic of *Timber Litter, Grass, Timber with Understory, and Grass/Shrub* models. The fire is burning in the Rex Creek (2001) fire footprint. Primary tree species include mixed sizes and densities of Douglas Fir and Ponderosa Pine. Local timber litter is compact to fluffy. Brush and understory species include ceanothus, hardwoods, and dog-hair conifer reproduction. **Numerous snags and heavy downed fuel loadings are common throughout all areas.** Live woody and herbaceous fuels are becoming available to contribute to fire intensity, mid slopes and lower. Grasses are partially to fully cured depending on elevation and aspect. Fuel conditions vary by aspect, previous fire history, and elevation. Most N and E aspects include 23-year-old brush and conifer trees with a heavy dead and down component beneath. Jackstraw fallen dead trees may be covered by brush.

***Expected fire behavior includes areas of sustained head fire runs, aggressive flanking, and backing (with rollout) with wind/slope alignment. In light fuels (grass, pine needle litter) expect dangerous rates of fire spread. Heavy fuels are retaining heat serving as ignition sources for surrounding fuels. Very active fire behavior is expected for next several days. Slope reversals will produce rapid rates of spread and high intensity burning when it occurs. Expect lee-side spotting as fire reaches ridgelines. Fuel concentrations will generate high intensity fire behavior with torching. Expect group torching with spotting to <.5 mi. where sufficient timber fuels are present.***

**\* FFM= 3%-5%, 1000hr. moisture=10%, Woody fuels 120%, Probability of Ignition—80-90%, Max Spotting 0.5 miles (or more with significant column development).**

Fuel Type	Rate of Spread	Flame Length	Backing ROS	ROS T-Storm Gusts to 35 mph
...If your work area includes -	(CH/HR = FPM)	Feet	FPM	(CH/HR = FMP)
GR2 - Moderate load grass/shrub	45 - 50	4 - 5	2	90 - 120 (1-1/2 MPH)
SH2 - Moderate load shrub	3 - 5	2-3	< 1	8 -10
TU5 - High load Timber w/ Understory	12 - 14	8- 9 (torching)	2	25 - 30
TL8 - Long needle timber litter	10-12	4- 6	2	30 - 35 (high intensity run)

### Specific Assignments:

**Div. A** – Fire will continue spread on both sides of Fish Creek, up the slopes of Moore Mtn, and Hunts Cr. to ridge tops. Runs/spots.

**Div. S** – Prince Cr. is spreading on both sides upstream to Middle Fk. Prince Cr. and toward Cub Lake. Finger runs likely.

**Lakeshore Protection Group** – **Monitor up/down lake winds closely.** Expect rapid spread in fine fuels if fire becomes active on the lower slopes between Moore Point and Stehekin, and down lake to Nelson Ridge. Expect high intensity fire behavior in timber fuels.

**Other Br./Grp.** – As fire becomes active, monitor fire activity for travel. Monitor smoke direction/amount with SW winds.

**\*IA** – Expect rapid rates of spread in light fuels. Ensure good size-up before engaging and base tactics on current as well as expected fire behavior. Review potential ROS and FL by fuel type.

**Air Operations:** Dense downwind and lake smoke early. T-storm hazards during the operational period, 30 mph outflow winds likely.

### Safety

**As demonstrated over the past several days – critical burn period requires LCES. Conditions requiring good decision making should be anticipated well in advance.....better to be an hour ahead rather than a minute behind. Suppression effectiveness with hand tools has limits.... Helicopters all have their limits too. Critical to know what your fire is doing at all times – better to know what it is going to do.**

*\*Today's Fire Behavior Forecast contains 739 words written for your situational awareness.*



## SAFETY MESSAGE

18 July 2024

INCIDENT: Pioneer

OPERATIONAL PERIOD: 0700-2100

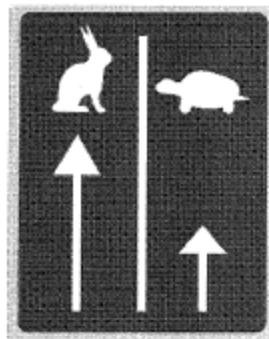
### OPERATIONAL TEMPO

The speed and intensity of our actions relative to the speed and intensity of unfolding events in the operational environment. Within the context, fire leaders plan, prepare, and execute operations proactively, rather than continuously being forced to react to the environment.

Successfully maintaining operational tempo is not solely about speeding up to match or exceed the pace of the environment. It is also about knowing when operations should slow down and why.

We are most vulnerable to accidents and errors when the operational tempo is changing, especially when it changes quickly. Maintaining good situational awareness despite change in operational tempo represents a considerable challenge.

**The key to managing operational tempo successfully is monitoring the changing environment and capabilities of the team, and then applying good judgment to determine whether to push forward or pull back while making necessary planning and resource adjustments.**



"The experienced soldier, once in motion, is never bewildered; once he has broken camp, he is never at a loss." Sun Tzu

SAFETY OFFICERS: Taija Corso, Josh Northrup, Justin Randall (t)

Risk Assessment Worksheet			1. Incident Name: <b>PIONEER FIRE</b>			2. Location: <b>WA-SES-000173</b>				
3. Leaders Intent /Specific Objective: Risk Management tools will be used to evaluate tactics in order to provide for firefighter and public safety while implementing actions that have a high probility of success. <b>THIS IS NOT AN EXHAUSTIVE LIST OF RISKS OR CONTROL OPTIONS</b>			4. Prepared By: <b>Taija Corso/Josh Northrup/Justin Randall</b>			5. Date Prepared: <b>Wednesday, July 17, 2024</b>				
Signature: <i>Taija Corso</i>			Title: <b>SOFC</b>							
Identify Hazards		Assess Hazards		Risk Control Options		Residual Risk		Decision	Implement	
7. Task	8. Hazard	9.. Hazard Probability	10. Severity	11. RAC	12. Identify hazard mitigations & abatement measures (press [alt + enter ] to add a line)	13. Hazard Probability	14. Severity	15. RAC	16. Risk Acceptable?	17. Hazard Control Assigned to:
Operational tasks	Medical Treatment and Transport Delay	Almost Certain	Catastrophic	Extremely High	Staff Medical personnel that is commensurate with the operational assignment. Coordination with the MEDL, BOAT Group and AOBD is essential. Detailed procedures are in place for medical transportation. If boat and/or air resources are unavailable, medical personnel is unavailable, and Risk Management matrix is unacceptable; consider alternative operational tactics and strategies. Use P.A.C.E. model for transportation planning utilizing the ICS206 medical plan. Identify helispots and possible. LEADERS INTENT: ANY WEATHER PERAMETERS OR OPERATIONAL CHANGES THAT WOULD AFFECT TRANSPORT WILL BE COMMUNICATED TO INCIDENT PERSONNEL FOR OPERATIONAL REASSEMENT.	Possible	Critical	High	YES	All Incident Personnel
Operational tasks	Hit by Hazards	Possible	Catastrophic	Extremely High	Maintain sound risk management processes and modify tactics and strategy to limit personnel exposure in areas that have probability for roll out and falling material.	Possible	Critical	High	YES	All Incident Personnel
Road maintenance	Vehicle collision or sliding off road, personal injury. 8200 road system deteriorating from use and difficult to drive. Increased fire behavior-entrapment.	Likely	Critical	Extremely High	Gravel ordered for the 8200 road. Use caution when driving in powder conditions. Minimize traffic where possible. Drive cautiously until road repaired.	Possible	Critical	High	YES	Road Group
Perimeter Control	Increased Fire Behavior- entrapment & burnover	Possible	Critical	High	With red flag warnings, drying of fuels, wind, and rollout potential anticipate increase in fire behavior and adjust tactics and strategies using the risk management process.	Unlikely	Critical	Moderate	YES	All Operations Personnel
Ground transportation (Hiking, UTV, Driving)	Motor Vehicle Accident- Struck by/Striking Object/Loss of vehicle control.	Possible	Critical	High	Hiking: Pace and situational awareness. UTV: Adhere to Agency UTV Policy Driving: Drive defensively, Chelan July traffic will be busy. Road closures do not have security assigned.	Possible	Critical	High	YES	All Incident Personnel
Transportation - Boat	Boat sinking from striking an object or capsizing due to high winds or waves- people drowning. Boat utilized as emergency egress for firefighter transport/escape route.	Unlikely	Critical	Moderate	Boat coordinators assigned. Qualified agency and commercial boat captains. PAX safety briefings and pax wear life jackets. Multi pax on board so MOB noticed immediately. Nomex PPE in boat for boat operators in event of emergency escape route access in dynamic fire environment. Boating plan and float following. Wind speed advisories. Sherrif directs boats to opposite side of lake and participants are cooperative and knowledgeable. Will rendezvous for briefing.	Rare	Moderate	Low	YES	Boat Group
Helicopter Operations	Aircraft Mishap - General	Unlikely	Catastrophic	High	VALIDATE THAT MISSIONS ARE ESSENTIAL AND MEET INCIDENT OBJECTIVES. TFR IS IN PLACE, IF YOU SEE INTRUSION COMMUNICATE IMMEDIATELY.	Rare	Catastrophic	Moderate	YES	All Operational Personnel
Interactions with Public Safety/Public Relations, Forest closure order growth	Personal Injury/Damage to Public Relations, no roads guards.	Possible	Moderate	Moderate	Travel with the expectation of public on roads and trails. Contact Team Law Enforcement, Safety Officers, and Security when necessary. Disengage from any confrontations.	Possible	Moderate	Moderate	YES	All Incident Personnel
Initial Attack	Unknown terrain, cooperators, leadership added to existing fire and ambient conditions. Sense of urgency & confusion. <b>Lack of working Forest Repeaters will add to radio traffic, using Pioneer frequencies.</b>	Likely	Critical	Extremely High	Incident IA resources pre-designated. Briefed at incident and dispatched with incident leadership. IA frequencies programmed into radios. <b>CWICC sending dispatchers to Entiat/Chelan to manage district fire radios.</b>	Possible	Critical	High	YES	All Operations Personnel
All Incident Operational Tasks	Medical - Heat Related Illness/Wildlife	Likely	Moderate	High	Identifying heat related Illness early, appropriate pace in extreme temps, shade, fluid intake in appropriate proportions. Discussions/Awareness on wildlife/snakes.	Unlikely	Critical	Moderate	YES	All Personnel
Night Operations	<b>Human Factors - Night Ops: Visibility, Fatigue. Limited egress options for firing operations.</b>	Likely	Critical	Extremely High	Dedicated night operations for boat egress. Dedicated night shift medic. Identify day sleeping areas.	Possible	Critical	High		Div A



## PIONEER NW TEAM 12 INITIAL ATTACK RESPONSE PLAN

Per the Pioneer Fire Delegation of Authority, PNW Team 12 has responsibility for Initial Attack response within the Pioneer Fire TFR. Additionally, the team will support initial attack efforts surrounding the TFR as requested. This includes ground and air resources. Most of the TFR consists of Forest Service and Park Service land with small parcels of private inholdings. Additional land ownership adjacent to the TFR consists of BLM, State, and private land.

### Pioneer Initial Attack Response Plan:

- IA fires reported near or within the TFR will be reported directly through CWICC by radio or phone. CWICC phone number is 509-884-3473
- Appropriate agency Duty Officer will be informed of the fire. If the fire is within the TFR and suppression actions are necessary, CWICC will contact Field Operations by phone or radio and provide response instructions. The duty officer is responsible for notifying the agency administrator of decision. Order of contact:
  - CWICC will contact Field Ops Aaron Rowe at 509-679-5378 or Field Ops trainee Lonnie Newton at 208-501-4019
  - If neither Field Ops can be reached by phone, call Field Ops on radio. If not reachable on radio, contact Pioneer Communications and have them relay message.
  - If no contact can be established with Field Ops, contact Planning Ops Kurt Ranta at 360-708-5227 or Planning Ops trainee Rob Poyner at 425-512-2621.
- Air Operations and/or Division/Group Supervisor assigned to the division/group nearest the IA location will be notified by Field Operations and respond with assigned resources.
- Local forest or state Initial Attack frequencies will be used and provided in the IAP Communications Plan.
- The same processes will be used for fires outside of TFR if assistance from Pioneer Fire resources is requested.
- Any air resources used on initial attack or support missions other than Pioneer will be on a lend/lease arrangement.
- All resources in Structure/IA Group are available for Initial Attack response. Other divisions/groups may have resources also identified for IA response. Number and type of resources mobilized to a new start will be determined by anticipated or requested need. Resources will be led by overhead at the Strike Team Leader level or above.
- Initial attack fires in the North Cascades NP Complex are reported through Puget Sound Dispatch. If IA occurs in the Lake Chelan NRA within the TFR or if IA support is needed in other parts of the NOCA Complex, PSICC will notify CWICC. CWICC will then proceed with notifications as outlined above.

### Process as written in 204 comments:

- All resources in Structure/IA Group are available for Initial Attack response per the Pioneer Fire IA Response Plan. Number and type of resources mobilized to a new start will be determined by anticipated or requested need. Resources will be led by overhead at the Strike Team Leader level or above.
  - If Initial Attack occurs within the TFR, Wenatchee Dispatch will coordinate with appropriate duty officer and contact Field Ops for response.
  - Field Operations will contact the Structure/IA Group Supervisor and/or Air Operations to coordinate response to new start.
  - Local forest Initial Attack frequencies will be used and provided in the IAP Communications Plan
  - The same process will be used for fires outside of TFR if assistance from Pioneer fire resources is requested.

## Division/Group Assignment List (ICS 204 WF)

Controlled Unclassified Information//Basic

<b>1. Incident Name:</b>				<b>3.</b>			
PIONEER				<b>Branch:</b>  I/II		<b>Division/Group:</b>  A	
<b>2. Operational Period:</b> 0700-2100							
Date/Time From: 07/18/2024 0700 THU		Date/Time To: 07/18/2024 2100 THU					
<b>4. Operations Personnel</b>							
<b>OPERATIONS CHIEF</b>		AARON ROWE, LONNIE NEWTON (T)		<b>BRANCH DIRECTOR</b>		JESSE BOHNSACK, CODY ACORD (T)	
<b>DIVISION/GROUP SUPERVISOR</b>		SHAWN OTTO, CHRIS RAMISKEY (T)		<b>AIR OPS BRANCH DIRECTOR</b>		PAUL BALFOUR	
<b>5. Resources Assigned this Period</b>							
Strike Team / Task Force / Resource Designator		LWD	Leader	Number Persons	Drop Off PT./Time	Pick Up PT./Time	
O-352 SOFC		07/23	KRIS CRODDY	1	LUCERNE/0700	LUCERNE/2100	
O-492 SOFC		07/24	LEA WOFFORD	1	LUCERNE/0700	LUCERNE/2100	
O-516 TFLD		07/26	SHANNON CLARK	1	LUCERNE/0700	LUCERNE/2100	
O-447 TFLD (T)		07/22	EHREN E PHILLIPS	1	LUCERNE/0700	LUCERNE/2100	
A-1.5 SHLR		07/23	BRANDON MCSPARIN	1	LUCERNE/0700	LUCERNE/2100	
A-1.15 HECM		07/23	MAKENZIE HAYMAKER	1	LUCERNE/0700	LUCERNE/2100	
O-409 HECM		07/22	RUGER BIXLER (T)	1	LUCERNE/0700	LUCERNE/2100	
O-433 FMOD BROTHERS FIRE MOD 02		07/24	JUSTIN OFFREDI	2	LUCERNE/0700	LUCERNE/2100	
C-30 CRW1 ENTIAT IHC		07/19	DAN PICKARD	23	DP 23/0700	DP 23/2100	
C-31 CRW1 LA GRANDE IHC		07/19	JUAN JESUS ELGUEZABAL	23	DP 22 MOORE POINT/0700	DP 22 MOORE POINT/2100	
C-36 CRW1 ZIGZAG IHC		07/20	SANDRA SPERRY	25	DP 17/0700	DP 17/2100	
C-50 CR2I GRAYBACK FORESTRY		07/21	GAVIN SAEMAN	20	LUCERNE/0700	LUCERNE/2100	
C-51 CR2I PATRICK ENVIRONMENTAL 18A		07/27	BENJAMIN LEWIS	20	LUCERNE/0700	LUCERNE/2100	
C-55 CR2I MT BAKER IA		07/29	ERIK USHER	22	LUCERNE /0700	LUCERNE/2100	
A-78 UAR3 UR31		07/22	PATRICK CLARK	4	LUCERNE/0700	LUCERNE/2100	
O-359 MEDIC 12		07/23	ETHAN BIEDERMAN	1	DP 22 MOORE POINT/0700	DP 22 MOORE POINT/2100	
<b>8. Division/Group Communication Summary</b>							
Function	Channel	RX Frequency N/W	RX Tone/NAC	TX Frequency N/W	TX Tone/NAC	Mode	
COMMAND	8	169.5375	123.0	164.7125	123.0	A	
COMMAND	9	170.4500	123.0	168.1000	123.0	A	
TACTICAL	2	168.2000	123.0	168.2000	123.0	A	
AIR TO GROUND	13	169.1500	000.0	169.1500	000.0	A	
AIR TO GROUND	14	168.4000	000.0	168.4000	000.0	A	
<b>9. Prepared By (Resource Unit Leader)</b>			<b>Approved By (Planning Section Chief)</b>			<b>Date</b>	<b>Time</b>
JENNIFER NORTON			JILL JOHNSON			07/17/2024	2100

## Division/Group Assignment List (ICS 204 WF)

Controlled Unclassified Information//Basic

<b>1. Incident Name:</b>				<b>3.</b>		
PIONEER				<b>Branch:</b>  I/II	<b>Division/Group:</b>  A	
<b>2. Operational Period:</b> 0700-2100						
Date/Time From: 07/18/2024 0700 THU		Date/Time To: 07/18/2024 2100 THU				
<b>4. Operations Personnel</b>						
<b>OPERATIONS CHIEF</b>		AARON ROWE, LONNIE NEWTON (T)		<b>BRANCH DIRECTOR</b>		JESSE BOHNSACK, CODY ACORD (T)
<b>DIVISION/GROUP SUPERVISOR</b>		SHAWN OTTO, CHRIS RAMISKEY (T)		<b>AIR OPS BRANCH DIRECTOR</b>		PAUL BALFOUR
<b>5. Resources Assigned this Period</b>						
Strike Team / Task Force / Resource Designator		LWD	Leader	Number Persons	Drop Off PT./Time	Pick Up PT./Time
O-533 MEDIC 1		07/25	CHRISTOPHER JACKSON	1	DP 22 MOORE POINT/0700	DP 22 MOORE POINT/2100
O-535 MEDIC 2		07/25	MICHEAL POE	1	LUCERNE/0700	LUCERNE/2100
O-628 MEDIC 3		07/30	GARY LEBACKEN	1	LUCERNE/0700	LUNCERNE/2100
E-84 VUTV KIRCHER AND SHERMAN					LUCERNE/0700	LUCERNE/2100
E-85 VUTV KIRCHER AND SHERMAN					LUCERNE/0700	LUCERNE/2100
<b>6. Control Operations/Work Assignments:</b>						
<p><b>TASK:</b> Implement point protection on private and federal infrastructure. Monitor fire growth north and west of Moore ridge and Hunts Creek and look for opportunities to limit fire spread towards Stehekin.</p> <p><b>PURPOSE:</b> To slow fire progression, minimize fire intensity around critical values, provide time for suppression tactics, and prevent fire spread towards Stehekin.</p> <p><b>END STATE:</b> Fire impacts to critical values, including private inholdings, federal infrastructure and Stehekin are minimized.</p>						
<b>7. Special Instructions:</b>						
<p>-In large or long term spike camps use helicopters, boats, or pack stock to deliver portable backcountry latrines and remove human waste if necessary. If camp does not have adequate pack, boat, or air support for human waste management, establish community latrines well away from water sources and common areas. Use human waste bags, if necessary.</p> <p>-Minimize ground disturbance on the Moore Point and Meadow Creek alluvial fans in order to protect sensitive resources.</p> <p>-Hose used from Prince Creek to Moore Pt: contaminated with invasive plants. Do not reuse. Backhaul to Moore Pt DP22 and store in "infested hose" area at Moore Pt until decontaminated.</p> <p>-All equipment, including UTVs, must be thoroughly rinsed before being backhauled from Moore Point.</p> <p>-Ensure hazard mitigations and IWI protocols are in place before taking action.</p>						
<b>8. Division/Group Communication Summary</b>						
Function	Channel	RX Frequency N/W	RX Tone/NAC	TX Frequency N/W	TX Tone/NAC	Mode
COMMAND	8	169.5375	123.0	164.7125	123.0	A
COMMAND	9	170.4500	123.0	168.1000	123.0	A
TACTICAL	2	168.2000	123.0	168.2000	123.0	A
AIR TO GROUND	13	169.1500	000.0	169.1500	000.0	A
AIR TO GROUND	14	168.4000	000.0	168.4000	000.0	A
<b>9. Prepared By (Resource Unit Leader)</b>			<b>Approved By (Planning Section Chief)</b>		<b>Date</b>	<b>Time</b>
JENNIFER NORTON			JILL JOHNSON		07/17/2024	2100

**Division/Group Assignment List (ICS 204 WF)**  
**Controlled Unclassified Information//Basic**

<b>1. Incident Name:</b>		<b>3.</b>	
PIONEER		<b>Branch:</b>  I/II	<b>Division/Group:</b>  A
<b>2. Operational Period:</b> 0700-2100			
Date/Time From: 07/18/2024 0700 THU	Date/Time To: 07/18/2024 2100 THU		
<b>4. Operations Personnel</b>			
<b>OPERATIONS CHIEF</b>	AARON ROWE, LONNIE NEWTON (T)	<b>BRANCH DIRECTOR</b>	JESSE BOHNSACK, CODY ACORD (T)
<b>DIVISION/GROUP SUPERVISOR</b>	SHAWN OTTO, CHRIS RAMISKEY (T)	<b>AIR OPS BRANCH DIRECTOR</b>	PAUL BALFOUR

**7. Special Instructions:**

-\*\* Denotes available for Initial Attack

-Designated IA resources, including all of Structure/IA, are available for Initial Attack response per the Pioneer Fire IA Response Plan. Number and type of resources mobilized to a new start will be determined by anticipated or requested need. Resources will be led by overhead at the Strike Team Leader level or above.

- o If Initial Attack occurs within the TFR, CWICC will coordinate with appropriate duty officer and contact Field Ops for response.
- o Field Operations will contact the Structure/IA Group Supervisor and/or Air Operations to coordinate response to new start.
- o Local forest Initial Attack frequencies will be used and provided in the IAP Communications Plan
- o The same process will be used for fires outside of TFR if assistance from Pioneer fire resources is requested.
- o Report new fires directly to CWICC ("Wenatchee Dispatch") by radio or phone. CWICC: 509-884-3473

<b>8. Division/Group Communication Summary</b>						
Function	Channel	RX Frequency N/W	RX Tone/NAC	TX Frequency N/W	TX Tone/NAC	Mode
COMMAND	8	169.5375	123.0	164.7125	123.0	A
COMMAND	9	170.4500	123.0	168.1000	123.0	A
TACTICAL	2	168.2000	123.0	168.2000	123.0	A
AIR TO GROUND	13	169.1500	000.0	169.1500	000.0	A
AIR TO GROUND	14	168.4000	000.0	168.4000	000.0	A

<b>9. Prepared By (Resource Unit Leader)</b>		<b>Approved By (Planning Section Chief)</b>		<b>Date</b>	<b>Time</b>
JENNIFER NORTON		JILL JOHNSON		07/17/2024	2100

**Division/Group Assignment List (ICS 204 WF)**  
**Controlled Unclassified Information//Basic**

<b>1. Incident Name:</b>				<b>3.</b>		
PIONEER				Branch:	Division/Group:	
<b>2. Operational Period: 0700-2100</b>						
Date/Time From: 07/18/2024 0700 THU		Date/Time To: 07/18/2024 2100 THU		I/II	D	
<b>4. Operations Personnel</b>						
<b>OPERATIONS CHIEF</b>		AARON ROWE, LONNIE NEWTON (T)		<b>BRANCH DIRECTOR</b>		JESSE BOHNSACK, CODY ACORD (T)
<b>DIVISION/GROUP SUPERVISOR</b>		BRETT JOHNSON, PAUL KIMBALL (T)		<b>AIR OPS BRANCH DIRECTOR</b>		PAUL BALFOUR
<b>5. Resources Assigned this Period</b>						
Strike Team / Task Force / Resource Designator	LWD	Leader	Number Persons	Drop Off PT./Time	Pick Up PT./Time	
O-581 SOFC	07/28	JEFFERY HAMMES	1	STEHEKIN/0700	STEHEKIN/2100	
O-556 TFLD	07/27	JORDAN SIMMONDS	1	STEHEKIN/0700	STEHEKIN/2100	
O-665 TFLD	07/31	BRENDAN O'NEIL	1	STEHEKIN/0700	STEHEKIN/2100	
O-448 TFLD (T)	07/22	ANDY MENDIGUREN	1	STEHEKIN/0700	STEHEKIN/2100	
O-440 HECM	07/21	ADAM HEBERLIE	1	STEHEKIN/0700	STEHEKIN/2100	
O-477 HECM	07/24	JOSEPH KUHLMANN	1	STEHEKIN/0700	STEHEKIN/2100	
**O-388 SMOD BANDELIER	07/22	JOSH O'COY	8	STEHEKIN/0700	STEHEKIN/2100	
O-377 WFM1 WHISKEYTOWN	07/21	WARREN SWAB	8	STEHEKIN/0700	STEHEKIN/2100	
O-402 WFM2 YOSEMITE	07/21	JOHN O'COY	8	STEHEKIN/0700	STEHEKIN/2100	
**E-298 ENG5 WA DNR	07/29	PILAR CASTRO	4	STEHEKIN/0700	STEHEKIN/2100	
**E-299 ENG5 WA DNR	07/29	COLE BAYSINGER	4	STEHEKIN/0700	STEHEKIN/2100	
**E-300 ENG5 WA DNR	07/29	ANDREW CLARK	4	STEHEKIN/0700	STEHEKIN/2100	
**E-301 ENG5 WA DNR	07/29	ARCHIE CALKINS	4	STEHEKIN/0700	STEHEKIN/2100	
**E-302 ENG5 WA DNR	07/29	EDSON AMEZUCA	3	STEHEKIN/0700	STEHEKIN/2100	
O-372 LEAD READ	07/20	JACK OELFKE	1	STEHEKIN/0700	STEHEKIN/2100	
O-523 ARCH	07/25	THEO SHAHEEN-MCCONNELL	1	STEHEKIN/0700	STEHEKIN/2100	
O-370 ARCH (T)	07/18	HENRY EATON	1	STEHEKIN/0700	STEHEKIN/2100	
<b>8. Division/Group Communication Summary</b>						
Function	Channel	RX Frequency N/W	RX Tone/NAC	TX Frequency N/W	TX Tone/NAC	Mode
COMMAND	8	169.5375	123.0	164.7125	123.0	A
COMMAND	9	170.4500	123.0	168.1000	123.0	A
TACTICAL	1	168.0500	123.0	168.0500	123.0	A
AIR TO GROUND	13	169.1500	000.0	169.1500	000.0	A
AIR TO GROUND	14	168.4000	000.0	168.4000	000.0	A
<b>9. Prepared By (Resource Unit Leader)</b>			<b>Approved By (Planning Section Chief)</b>		<b>Date</b>	<b>Time</b>
JENNIFER NORTON			JILL JOHNSON		07/17/2024	2100

## Division/Group Assignment List (ICS 204 WF)

Controlled Unclassified Information//Basic

<b>1. Incident Name:</b>				<b>3.</b>			
PIONEER				<b>Branch:</b>		<b>Division/Group:</b>	
<b>2. Operational Period:</b> 0700-2100				I/II		D	
Date/Time From: 07/18/2024 0700 THU		Date/Time To: 07/18/2024 2100 THU					
<b>4. Operations Personnel</b>							
<b>OPERATIONS CHIEF</b>		AARON ROWE, LONNIE NEWTON (T)		<b>BRANCH DIRECTOR</b>		JESSE BOHNSACK, CODY ACORD (T)	
<b>DIVISION/GROUP SUPERVISOR</b>		BRETT JOHNSON, PAUL KIMBALL (T)		<b>AIR OPS BRANCH DIRECTOR</b>		PAUL BALFOUR	
<b>5. Resources Assigned this Period</b>							
Strike Team / Task Force / Resource Designator		LWD	Leader	Number Persons	Drop Off PT./Time	Pick Up PT./Time	
O-376 REAF		07/18	ROGER CHRISTOPHERSEN	1	STEHEKIN/0700	STEHEKIN/2100	
O-604 REAF		07/31	ANDREW CHRISTIE	1	STEHEKIN/0700	STEHEKIN/2100	
O-371 REAF (T)		07/20	HEATHER RICKLEFF	1	STEHEKIN/0700	STEHEKIN/2100	
O-416 MEDIC 15		07/21	ROBERT RUSZALA	1	STEHEKIN/0700	STEHEKIN/2100	
O-417 MEDIC 14		07/21	LAURA KRAUSE	1	STEHEKIN/0700	STEHEKIN/2100	
O-579 EMT 1		07/29	TRAVIS BRADDOCK	1	STEHEKIN/0700	STEHEKIN/2100	
E-89 DRIVER BIG STATE WILDFIRE		07/27	BENJERMIN RIGGS	1	STEHEKIN/0700	STEHEKIN/2100	
E-107 VUTV JB CONTRACTORS					STEHEKIN/0700	STEHEKIN/2100	
E-125 VUTV JB CONTRACTORS					STEHEKIN/0700	STEHEKIN/2100	
E-126 VUTV JB CONTRACTORS					STEHEKIN/0700	STEHEKIN/2100	
E-139 VUTV JB CONTRACTORS					STEHEKIN/0700	STEHEKIN/2100	
E-140 VUTV OUTBACK FIREFIGHTING					STEHEKIN/0700	STEHEKIN/2100	
E-141 VUTV OUTBACK FIREFIGHTING					STEHEKIN/0700	STEHEKIN/2100	
E-142 VUTV OUTBACK FIREFIGHTING					STEHEKIN/0700	STEHEKIN/2100	
E-163 VUTV STEHEKIN RENTALS					STEHEKIN/0700	STEHEKIN/2100	
E-164 VUTV STEHEKIN RENTALS					STEHEKIN/0700	STEHEKIN/2100	
<b>8. Division/Group Communication Summary</b>							
Function	Channel	RX Frequency N/W	RX Tone/NAC	TX Frequency N/W	TX Tone/NAC	Mode	
COMMAND	8	169.5375	123.0	164.7125	123.0	A	
COMMAND	9	170.4500	123.0	168.1000	123.0	A	
TACTICAL	1	168.0500	123.0	168.0500	123.0	A	
AIR TO GROUND	13	169.1500	000.0	169.1500	000.0	A	
AIR TO GROUND	14	168.4000	000.0	168.4000	000.0	A	
<b>9. Prepared By (Resource Unit Leader)</b>			<b>Approved By (Planning Section Chief)</b>			<b>Date</b>	<b>Time</b>
JENNIFER NORTON			JILL JOHNSON			07/17/2024	2100

## Division/Group Assignment List (ICS 204 WF)

Controlled Unclassified Information//Basic

<b>1. Incident Name:</b>			<b>3.</b>			
PIONEER			<b>Branch:</b>  I/II		<b>Division/Group:</b>  D	
<b>2. Operational Period:</b> 0700-2100						
Date/Time From: 07/18/2024 0700 THU		Date/Time To: 07/18/2024 2100 THU				
<b>4. Operations Personnel</b>						
<b>OPERATIONS CHIEF</b>		AARON ROWE, LONNIE NEWTON (T)		<b>BRANCH DIRECTOR</b>		JESSE BOHNSACK, CODY ACORD (T)
<b>DIVISION/GROUP SUPERVISOR</b>		BRETT JOHNSON, PAUL KIMBALL (T)		<b>AIR OPS BRANCH DIRECTOR</b>		PAUL BALFOUR
<b>5. Resources Assigned this Period</b>						
Strike Team / Task Force / Resource Designator		LWD	Leader	Number Persons	Drop Off PT./Time	Pick Up PT./Time
<b>6. Control Operations/Work Assignments:</b>						
<p><b>TASK:</b> Continue improving the community protection fireline and structure prep in and around Stehekin.</p> <p><b>PURPOSE:</b> To protect the community of Stehekin, surrounding infrastructure and historic values from fire impacts.</p> <p><b>END STATE:</b> Fire impacts to critical values in and around Stehekin have been minimized.</p>						
<b>7. Special Instructions:</b>						
<p>-All operational personnel working on USFS lands will need to conduct a thorough inspection for invasive species seeds on boots including laces, clothing, and gear prior to entering NPS lands.</p> <p>-Only fresh (direct from the cache) hose should be utilized on NPS lands to prevent the transport of invasive species seeds.</p> <p>-Hose used on USFS lands should not be used on NPS lands and hose used on NPS lands should not be used on USFS lands to prevent the spread of invasives species seeds.</p> <p>-Cargo loads being transported onto NPS lands should be inspected for invasive weed seed prior to flight.</p> <p>-NPS Resource Avoidance Area Flagging is yellow with red polka dots. Contact NPS READs before working in areas where this flagging is present.</p> <p>-Ensure hazard mitigations and IWI protocols are in place before taking action.</p> <p>-** Denotes available for Initial Attack</p> <p>-Designated IA resources, including all of Structure/IA, are available for Initial Attack response per the Pioneer Fire IA Response Plan. Number and type of resources mobilized to a new start will be determined by anticipated or requested need. Resources will be led by overhead at the Strike Team Leader level or above.</p> <ul style="list-style-type: none"> <li>o If Initial Attack occurs within the TFR, CWICC will coordinate with appropriate duty officer and contact Field Ops for response.</li> <li>o Field Operations will contact the Structure/IA Group Supervisor and/or Air Operations to coordinate response to new start.</li> <li>o Local forest Initial Attack frequencies will be used and provided in the IAP Communications Plan</li> <li>o The same process will be used for fires outside of TFR if assistance from Pioneer fire resources is requested.</li> <li>o Report new fires directly to CWICC ("Wenatchee Dispatch") by radio or phone. CWICC: 509-884-3473</li> </ul>						
<b>8. Division/Group Communication Summary</b>						
Function	Channel	RX Frequency N/W	RX Tone/NAC	TX Frequency N/W	TX Tone/NAC	Mode
COMMAND	8	169.5375	123.0	164.7125	123.0	A
COMMAND	9	170.4500	123.0	168.1000	123.0	A
TACTICAL	1	168.0500	123.0	168.0500	123.0	A
AIR TO GROUND	13	169.1500	000.0	169.1500	000.0	A
AIR TO GROUND	14	168.4000	000.0	168.4000	000.0	A
<b>9. Prepared By (Resource Unit Leader)</b>			<b>Approved By (Planning Section Chief)</b>		<b>Date</b>	<b>Time</b>
JENNIFER NORTON			JILL JOHNSON		07/17/2024	2100

## Division/Group Assignment List (ICS 204 WF)

Controlled Unclassified Information//Basic

<b>1. Incident Name:</b>				<b>3.</b>			
PIONEER				<b>Branch:</b>		<b>Division/Group:</b>	
<b>2. Operational Period:</b> 0700-2100				IV		S	
Date/Time From: 07/18/2024 0700 THU		Date/Time To: 07/18/2024 2100 THU					
<b>4. Operations Personnel</b>							
<b>OPERATIONS CHIEF</b>		AARON ROWE, LONNIE NEWTON (T)		<b>BRANCH DIRECTOR</b>		TIM BARNETT	
<b>DIVISION/GROUP SUPERVISOR</b>		MATT KENNEDY, JULIUS JACOBSEN (T)		<b>AIR OPS BRANCH DIRECTOR</b>		PAUL BALFOUR	
<b>5. Resources Assigned this Period</b>							
Strike Team / Task Force / Resource Designator		LWD	Leader	Number Persons	Drop Off PT./Time	Pick Up PT./Time	
O-425 TFLD		07/23	JON WILLOUGHBY	1	ICP/0700	ICP/2100	
C-35 CRW1 UNION IHC		07/19	ERIC JORGENSON	22	H40/0700	H40/2100	
E-231 ENG5 MONTANA DNRC		07/22	ERNEST LEE NACE	5	ICP/0700	ICP/2100	
E-309 ENG4 LATE SUMMERS WILDFIRE		07/23	NOLAN ETTENHOFER	3	ICP/0700	ICP/2100	
E-325 ENG6 METHOW RIVER WILD FIRE		07/25	IVAN MUNOZ	3	ICP/0700	ICP/2100	
E-73 WTS1 STRAND TENDERS		07/22	WADE STRAND	1	CAMP 4 SPIKE/0700	CAMP 4 SPIKE/2100	
E-78 WTS2 KING HYDROSEEDING		07/27	WES BODENHAMER	1	CAMP 4 SPIKE/0700	CAMP 4 SPIKE/2100	
E-174 WTS2 UPPER VALLEY		07/20	KEITH HIATT	1	ICP/0700	ICP/2100	
O-485 UASP		07/22	KELLY LEWIS	1	BIG HILL/0700	BIG HILL/2100	
O-43 REMS 1		07/23	RICK BOSTAIN	4	CAMP 4 SPIKE/0700	CAMP 4 SPIKE/2100	
O-358 MEDIC 11		07/23	SAVANAH MCLAUGHLIN	1	CAMP 4 SPIKE/0700	CAMP 4 SPIKE/2100	
E-18 VUTV CM BACKCOUNTRY							
E-149 VUTV TOP GUN RES POLARIS							
<b>8. Division/Group Communication Summary</b>							
Function	Channel	RX Frequency N/W	RX Tone/NAC	TX Frequency N/W	TX Tone/NAC	Mode	
COMMAND	7	168.4750	123.0	165.4000	123.0	A	
COMMAND	10	170.0125	123.0	165.2500	123.0	A	
COMMAND	11	170.4125	123.0	165.9625	123.0	A	
COMMAND	12	170.6875	123.0	166.5750	123.0	A	
TACTICAL	1	168.0500	123.0	168.0500	123.0	A	
AIR TO GROUND	13	169.1500	000.0	169.1500	000.0	A	
AIR TO GROUND	14	168.4000	000.0	168.4000	000.0	A	
<b>9. Prepared By (Resource Unit Leader)</b>			<b>Approved By (Planning Section Chief)</b>			<b>Date</b>	<b>Time</b>
JENNIFER NORTON			JILL JOHNSON			07/17/2024	2100



**Division/Group Assignment List (ICS 204 WF)**  
**Controlled Unclassified Information//Basic**

<b>1. Incident Name:</b>				<b>3.</b>			
PIONEER				<b>Branch:</b>  IV		<b>Division/Group:</b>  S	
<b>2. Operational Period:</b> 0700-2100							
Date/Time From: 07/18/2024 0700 THU		Date/Time To: 07/18/2024 2100 THU					
<b>4. Operations Personnel</b>							
<b>OPERATIONS CHIEF</b>		AARON ROWE, LONNIE NEWTON (T)		<b>BRANCH DIRECTOR</b>		TIM BARNETT	
<b>DIVISION/GROUP SUPERVISOR</b>		MATT KENNEDY, JULIUS JACOBSEN (T)		<b>AIR OPS BRANCH DIRECTOR</b>		PAUL BALFOUR	
<b>5. Resources Assigned this Period</b>							
Strike Team / Task Force / Resource Designator		LWD	Leader	Number Persons	Drop Off PT./Time	Pick Up PT./Time	
<b>6. Control Operations/Work Assignments:</b>							
<p><b>TASK:</b> Monitor fire progression in Lone Fir drainage and evaluate trigger points to initiate firing operations on the Nelson Butte line.</p> <p><b>PURPOSE:</b> To protect values downlake from the fire by establishing a barrier to fire spread</p> <p><b>END STATE:</b> Control line anchored from H-40 to Lake Chelan and DP-51 to Lake Chelan. Lines are prepped and ready to fire.</p>							
<b>7. Special Instructions:</b>							
<p>-Ensure hazard mitigations and IWI protocols are in place before taking action.</p> <p>-** Denotes available for Initial Attack</p> <p>-Designated IA resources, including all of Structure/IA, are available for Initial Attack response per the Pioneer Fire IA Response Plan. Number and type of resources mobilized to a new start will be determined by anticipated or requested need. Resources will be led by overhead at the Strike Team Leader level or above.</p> <ul style="list-style-type: none"> <li>o If Initial Attack occurs within the TFR, CWICC will coordinate with appropriate duty officer and contact Field Ops for response.</li> <li>o Field Operations will contact the Structure/IA Group Supervisor and/or Air Operations to coordinate response to new start.</li> <li>o Local forest Initial Attack frequencies will be used and provided in the IAP Communications Plan</li> <li>o The same process will be used for fires outside of TFR if assistance from Pioneer fire resources is requested.</li> <li>o Report new fires directly to CWICC ("Wenatchee Dispatch") by radio or phone. CWICC: 509-884-3473</li> </ul>							
<b>8. Division/Group Communication Summary</b>							
Function	Channel	RX Frequency N/W	RX Tone/NAC	TX Frequency N/W	TX Tone/NAC	Mode	
COMMAND	7	168.4750	123.0	165.4000	123.0	A	
COMMAND	10	170.0125	123.0	165.2500	123.0	A	
COMMAND	11	170.4125	123.0	165.9625	123.0	A	
COMMAND	12	170.6875	123.0	166.5750	123.0	A	
TACTICAL	1	168.0500	123.0	168.0500	123.0	A	
AIR TO GROUND	13	169.1500	000.0	169.1500	000.0	A	
AIR TO GROUND	14	168.4000	000.0	168.4000	000.0	A	
<b>9. Prepared By (Resource Unit Leader)</b>			<b>Approved By (Planning Section Chief)</b>			<b>Date</b>	<b>Time</b>
JENNIFER NORTON			JILL JOHNSON			07/17/2024	2100

## Division/Group Assignment List (ICS 204 WF)

Controlled Unclassified Information//Basic

<b>1. Incident Name:</b>				<b>3.</b>			
PIONEER				<b>IV</b>		<b>CONTINGENCY</b>	
<b>2. Operational Period:</b> 0700-2100							
Date/Time From: 07/18/2024 0700 THU		Date/Time To: 07/18/2024 2100 THU					
<b>4. Operations Personnel</b>							
<b>OPERATIONS CHIEF</b>		AARON ROWE, LONNIE NEWTON (T)		<b>BRANCH DIRECTOR</b>		TIM BARNETT	
<b>DIVISION/GROUP SUPERVISOR</b>		HEIDI SPRENGER, ROY BOOTS (T)		<b>AIR OPS BRANCH DIRECTOR</b>		PAUL BALFOUR	
<b>5. Resources Assigned this Period</b>							
Strike Team / Task Force / Resource Designator		LWD	Leader	Number Persons	Drop Off PT./Time	Pick Up PT./Time	
O-455 SOF2		07/22	PAUL BRNA	1	ICP/0700	ICP/2100	
O-400 TFLD		07/21	BENJAMIN EDDINGS	1	ICP/0700	ICP/2100	
**O-470 HEQB		07/23	AUSTIN NOBLES	1	ICP/0700	ICP/2100	
C-34 CR2I WALLOWA		07/20	KIRA SANTULLI	20	ICP/0700	ICP/2100	
C-43 CR2I DIAMOND FIRE 11B		07/22	LARRY ECKELMAN	20	ICP/0700	ICP/2100	
E-280 ENG6 RAINSTORM		07/23	GARRETT RAINS	3	ICP/0700	ICP/2100	
E-310 ENG6 BAILEY ENTERPRISES		07/24	CLIVE BAILEY	3	ICP/0700	ICP/2100	
**E-269 DZR3		07/22	JEFFERY ROBERT	2	ICP/0700	ICP/2100	
E-238 MBM2 WILDFIRE		07/21	MIKE JOHNSON	2	ICP/0700	ICP/2100	
O-426 TFLD		07/22	MITCHELL STILES	1	ICP/0700	ICP/2100	
O-586 HEQB		07/29	DAVID SUND	1	ICP/0700	ICP/2100	
O-624 HEQB		07/31	CHRIS RANEY	1	ICP/0700	ICP/2100	
O-625 HEQB		07/31	SEAN LOSCUDO	1	ICP/0700	ICP/2100	
E-365 ENG4 WILD FIRE SERVICES		07/31	TIM LOGOZZO	3	ICP/0700	ICP/2100	
O-434 FMOD DELUNA ENTERPRISES		07/21	JOHN DELUNA	2	ICP/0700	ICP/2100	
O-614 FMOD FM-02		07/23	DAVID RAINS	2	ICP/0700	ICP/2100	
<b>8. Division/Group Communication Summary</b>							
Function	Channel	RX Frequency N/W	RX Tone/NAC	TX Frequency N/W	TX Tone/NAC	Mode	
COMMAND	7	168.4750	123.0	165.4000	123.0	A	
COMMAND	10	170.0125	123.0	165.2500	123.0	A	
COMMAND	11	170.4125	123.0	165.9625	123.0	A	
COMMAND	12	170.6875	123.0	166.5750	123.0	A	
TACTICAL	3	168.6000	123.0	168.6000	123.0	A	
AIR TO GROUND	13	169.1500	000.0	169.1500	000.0	A	
AIR TO GROUND	14	168.4000	000.0	168.4000	000.0	A	
<b>9. Prepared By (Resource Unit Leader)</b>			<b>Approved By (Planning Section Chief)</b>			<b>Date</b>	<b>Time</b>
JENNIFER NORTON			JILL JOHNSON			07/17/2024	2100

**Division/Group Assignment List (ICS 204 WF)**  
**Controlled Unclassified Information//Basic**

<b>1. Incident Name:</b>				<b>3.</b>		
PIONEER				Branch:  IV	Division/Group:  CONTINGENCY	
<b>2. Operational Period:</b> 0700-2100						
Date/Time From: 07/18/2024 0700 THU		Date/Time To: 07/18/2024 2100 THU				
<b>4. Operations Personnel</b>						
<b>OPERATIONS CHIEF</b>		AARON ROWE, LONNIE NEWTON (T)		<b>BRANCH DIRECTOR</b>		TIM BARNETT
<b>DIVISION/GROUP SUPERVISOR</b>		HEIDI SPRENGER, ROY BOOTS (T)		<b>AIR OPS BRANCH DIRECTOR</b>		PAUL BALFOUR
<b>5. Resources Assigned this Period</b>						
Strike Team / Task Force / Resource Designator	LWD	Leader	Number Persons	Drop Off PT./Time	Pick Up PT./Time	
O-615 FMOD FM-01	07/24	DAVID RAINS	2	ICP/0700	ICP/2100	
C-33 CR2I NORTH PACIFIC	07/20	JOSE PEREZ	20	ICP/0700	ICP/2100	
E-157 WTS2 PINE MOUNTAIN EXCAVATING	07/25	BOB GOSS	1	ICP/0700	ICP/2100	
E-324 ENG6 METHOW RIVER WILD FIRE	07/25	JOHN NEUNEKER	3	ICP/0700	ICP/2100	
E-237 DZR2 HAYWIRE SERVICES	07/28	KEVIN HANSON	2	ICP/0700	ICP/2100	
E-205 DZR3 DOUGLAS LOGGING	07/26	STEVE DOUGLAS	1	ICP/0700	ICP/2100	
E-105 MBM2 JUSTIN PITTS TRUCKING	07/28	ADAM BERGSTROM	2	ICP/0700	ICP/2100	
E-366 MBM1 JUSTIN PITTS TRUCKING	07/30	BEN BREITENBACH	2	ICP/0700	ICP/2100	
E-102 SKG2 DUKES EQUIPMENT	07/28	JUSTIN DURSTIN	2	ICP/0700	ICP/2100	
E-278 SKG2 DUKES EQUIPMENT	07/29	JENNA WOLFE	2	ICP/0700	ICP/2100	
O-468 TFLD	07/23	JENNY ALEXANDER	1	ICP/0700	ICP/2100	
O-518 TFLD (T)	07/24	AUSTIN R MCDONALD	1	ICP/0700	ICP/2100	
O-430 HEQB	07/21	TYLER F KUIKEN	1	ICP/0700	ICP/2100	
O-540 HEQB (T)	07/24	BENJAMIN BOUCHER	1	ICP/0700	ICP/2100	
O-588 HEQB (T)	07/29	LYDIA BARK	1	ICP/0700	ICP/2100	
O-594 HEQB (T)	07/28	DREW PARKER	1	ICP/0700	ICP/2100	
<b>8. Division/Group Communication Summary</b>						
Function	Channel	RX Frequency N/W	RX Tone/NAC	TX Frequency N/W	TX Tone/NAC	Mode
COMMAND	7	168.4750	123.0	165.4000	123.0	A
COMMAND	10	170.0125	123.0	165.2500	123.0	A
COMMAND	11	170.4125	123.0	165.9625	123.0	A
COMMAND	12	170.6875	123.0	166.5750	123.0	A
TACTICAL	3	168.6000	123.0	168.6000	123.0	A
AIR TO GROUND	13	169.1500	000.0	169.1500	000.0	A
AIR TO GROUND	14	168.4000	000.0	168.4000	000.0	A
<b>9. Prepared By (Resource Unit Leader)</b>			<b>Approved By (Planning Section Chief)</b>		<b>Date</b>	<b>Time</b>
JENNIFER NORTON			JILL JOHNSON		07/17/2024	2100

**Division/Group Assignment List (ICS 204 WF)**  
**Controlled Unclassified Information//Basic**

<b>1. Incident Name:</b>				<b>3.</b>		
PIONEER				Branch:  IV	Division/Group:  CONTINGENCY	
<b>2. Operational Period:</b> 0700-2100						
Date/Time From: 07/18/2024 0700 THU		Date/Time To: 07/18/2024 2100 THU				
<b>4. Operations Personnel</b>						
<b>OPERATIONS CHIEF</b>		AARON ROWE, LONNIE NEWTON (T)		<b>BRANCH DIRECTOR</b>		TIM BARNETT
<b>DIVISION/GROUP SUPERVISOR</b>		HEIDI SPRENGER, ROY BOOTS (T)		<b>AIR OPS BRANCH DIRECTOR</b>		PAUL BALFOUR
<b>5. Resources Assigned this Period</b>						
Strike Team / Task Force / Resource Designator	LWD	Leader	Number Persons	Drop Off PT./Time	Pick Up PT./Time	
E-364 ENG4 COHO FORESTRY	07/30	JACOB MONTGOMERY	3	ICP/0700	ICP/2100	
E-173 WTS2 RIDGE TOP IRON	07/27	TIM WHITEHURST	1	ICP/0700	ICP/2100	
E-354 WTS2 K WATER	07/29	MIKE THOMAS	1	ICP/0700	ICP/2100	
E-236 DZR2 TOP RAIL	07/21	DAIN LUKEHART	2	ICP/0700	ICP/2100	
E-268 DZR3 REMSBERG LOGGING	07/30	CHRIS JACK	2	ICP/0700	ICP/2100	
E-270 DZR1 SILVER NICKEL LOGGING	07/23	DONNIE COMBS	2	ICP/0700	ICP/2100	
E-271 DZR2 DUKES EQUIPMENT	07/22	TYSON HAUBER	2	ICP/0700	ICP/2100	
E-272 FEL1 HAVILLAH LOGGING CO.	07/22	TOM KERSHNER	2	ICP/0700	ICP/2100	
E-273 FEL1 SILVER NICKLE LOGGING	07/22	RUDY RODRIGUEZ	2	ICP/0700	ICP/2100	
E-240 FEL2 AXSUS	07/21	PAUL MCNITT	2	ICP/0700	ICP/2100	
E-241 FEL2 LOST CREEK LOGGING	07/21	DUSTIN CHANTRY	2	ICP/0700	ICP/2100	
E-318 LOGL SILVER NICKEL LOGGING	07/25	BART SILVERTHORN	2	ICP/0700	ICP/2100	
E-319 LOGL SILVER NICKEL LOGGING	07/25	BRENDEN LATIMER	1	ICP/0700	ICP/2100	
E-208 SKG2 NW DIESEL DUDES	07/24	ROBERT LUNYOU	2	ICP/0700	ICP/2100	
E-347 SKG1 AXSUS ENTERPRISES LLC	07/29	JARED REED	2	ICP/0700	ICP/2100	
E-274 SKD1 SILVER-NICKEL LOGGING	07/23	WYATT PERSHING	1	ICP/0700	ICP/2100	
E-275 SKD1 SILVER-NICKEL LOGGING	07/30	KODY AYERS	1	ICP/0700	ICP/2100	
<b>8. Division/Group Communication Summary</b>						
Function	Channel	RX Frequency N/W	RX Tone/NAC	TX Frequency N/W	TX Tone/NAC	Mode
COMMAND	7	168.4750	123.0	165.4000	123.0	A
COMMAND	10	170.0125	123.0	165.2500	123.0	A
COMMAND	11	170.4125	123.0	165.9625	123.0	A
COMMAND	12	170.6875	123.0	166.5750	123.0	A
TACTICAL	3	168.6000	123.0	168.6000	123.0	A
AIR TO GROUND	13	169.1500	000.0	169.1500	000.0	A
AIR TO GROUND	14	168.4000	000.0	168.4000	000.0	A
<b>9. Prepared By (Resource Unit Leader)</b>			<b>Approved By (Planning Section Chief)</b>		<b>Date</b>	<b>Time</b>
JENNIFER NORTON			JILL JOHNSON		07/17/2024	2100

**Division/Group Assignment List (ICS 204 WF)**  
**Controlled Unclassified Information//Basic**

<b>1. Incident Name:</b>				<b>3.</b>		
PIONEER				Branch:  IV	Division/Group:  CONTINGENCY	
<b>2. Operational Period:</b> 0700-2100						
Date/Time From: 07/18/2024 0700 THU		Date/Time To: 07/18/2024 2100 THU				
<b>4. Operations Personnel</b>						
<b>OPERATIONS CHIEF</b>		AARON ROWE, LONNIE NEWTON (T)		<b>BRANCH DIRECTOR</b>		TIM BARNETT
<b>DIVISION/GROUP SUPERVISOR</b>		HEIDI SPRENGER, ROY BOOTS (T)		<b>AIR OPS BRANCH DIRECTOR</b>		PAUL BALFOUR
<b>5. Resources Assigned this Period</b>						
Strike Team / Task Force / Resource Designator		LWD	Leader	Number Persons	Drop Off PT./Time	Pick Up PT./Time
**O-457 TFLD		07/21	JEFFERY DICKINSON	1	ICP/0700	ICP/2100
O-431 HEQB		07/21	DAN POOLE	1	ICP/0700	ICP/2100
O-445 HEQB (T)		07/21	KELSIE P RANTZOW	1	ICP/0700	ICP/2100
**C-32 CR2I PATRICK		07/19	GARTH CHAMBERS	20	ICP/0700	ICP/2100
**E-235 ENG6 PIKE		07/22	ANDREW L DUZET	4	ICP/0700	ICP/2100
E-151 MBM2 DUKES EQUIPMENT		07/29	MATT SVEEN	2	ICP/0700	ICP/2100
E-152 MBM2 AXSUS		07/26	ADAM HEDLUND	2	ICP/0700	ICP/2100
E-154 SKG2 WESTERN		07/27	TAUNER LAUMAN	2	ICP/0700	ICP/2100
E-155 SKG2 MOUNTAIN VIEW		07/27	SHAWN BEAMAN	2	ICP/0700	ICP/2100
E-242 EXC2 DELANGE ENTERPRISES		07/21	PETE DELANGE	2	ICP/0700	ICP/2100
O-383 MEDIC 13		07/18	TONY BYLSKI	1	ICP/0700	ICP/2100
O-630 MEDIC 19		07/30	RONALD LAUBACH	1	ICP/0700	ICP/2100
O-534 MEDIC 7		07/25	JOSHUA GRAY	1	ICP/0700	ICP/2100
O-464 REMS 3		07/22	RON PEARSALL	4	ICP/0700	ICP/2100
O-449 RATT 1		07/29	CLAIRE GARRETT	2	ICP/0700	ICP/2100
<b>8. Division/Group Communication Summary</b>						
Function	Channel	RX Frequency N/W	RX Tone/NAC	TX Frequency N/W	TX Tone/NAC	Mode
COMMAND	7	168.4750	123.0	165.4000	123.0	A
COMMAND	10	170.0125	123.0	165.2500	123.0	A
COMMAND	11	170.4125	123.0	165.9625	123.0	A
COMMAND	12	170.6875	123.0	166.5750	123.0	A
TACTICAL	3	168.6000	123.0	168.6000	123.0	A
AIR TO GROUND	13	169.1500	000.0	169.1500	000.0	A
AIR TO GROUND	14	168.4000	000.0	168.4000	000.0	A
<b>9. Prepared By (Resource Unit Leader)</b>			<b>Approved By (Planning Section Chief)</b>		<b>Date</b>	<b>Time</b>
JENNIFER NORTON			JILL JOHNSON		07/17/2024	2100

## Division/Group Assignment List (ICS 204 WF)

Controlled Unclassified Information//Basic

<b>1. Incident Name:</b>				<b>3.</b>		
PIONEER				<b>Branch:</b>  IV	<b>Division/Group:</b>  CONTINGENCY	
<b>2. Operational Period:</b> 0700-2100						
Date/Time From: 07/18/2024 0700 THU		Date/Time To: 07/18/2024 2100 THU				
<b>4. Operations Personnel</b>						
<b>OPERATIONS CHIEF</b>		AARON ROWE, LONNIE NEWTON (T)		<b>BRANCH DIRECTOR</b>		TIM BARNETT
<b>DIVISION/GROUP SUPERVISOR</b>		HEIDI SPRENGER, ROY BOOTS (T)		<b>AIR OPS BRANCH DIRECTOR</b>		PAUL BALFOUR
<b>5. Resources Assigned this Period</b>						
Strike Team / Task Force / Resource Designator		LWD	Leader	Number Persons	Drop Off PT./Time	Pick Up PT./Time
E-194 AMBO-2		07/29	KODY HURD	2	ICP/0700	ICP/2100
E-260 AMBO 3		07/22	LEV BABICH	2	ICP/0700	ICP/2100
E-19 VUTV BACKCOUNTRY RENTALS					ICP/0700	ICP/2100
E-44 VATV KIRCHER SHERMAN					ICP/0700	ICP/2100
E-93 VUTV VUTV_KWIK RESPONSE SUPPORT		08/01		1	ICP/0700	ICP/2100
E-108 VUTV (2 SEAT) -KIRCHER AND SHERMAN					ICP/0700	ICP/2100
<b>6. Control Operations/Work Assignments:</b>						
<p><b>Task:</b> Implement control lines from H45 to DP53. Continue road maintenance on 4330 and 4010. Continue the POD line from DP53 to Lake Chelan.</p> <p><b>Purpose:</b> To protect critical values at risk.</p> <p><b>End state:</b> To have established control lines in place that correspond to Pioneer Fire strategic plan.</p>						
<b>7. Special Instructions:</b>						
<p>-Ensure hazard mitigations and IWI protocols are in place before taking action.</p> <p>-Contingency resources working DIV H: Do not draft from Gold Creek to Black Canyon Creek.</p> <p>-Work with READS to maintain resource protection.</p> <p>Antilon line construction (H47-Goff Peak) tree process &amp; thin specs:</p> <p>--Whole tree yard to READ-designated landings; cut &amp; process at landings; do not sort along 8200 road</p> <p>--Retain 30 trees per acre (~ 40'x40' spacing)</p>						
<b>8. Division/Group Communication Summary</b>						
Function	Channel	RX Frequency N/W	RX Tone/NAC	TX Frequency N/W	TX Tone/NAC	Mode
COMMAND	7	168.4750	123.0	165.4000	123.0	A
COMMAND	10	170.0125	123.0	165.2500	123.0	A
COMMAND	11	170.4125	123.0	165.9625	123.0	A
COMMAND	12	170.6875	123.0	166.5750	123.0	A
TACTICAL	3	168.6000	123.0	168.6000	123.0	A
AIR TO GROUND	13	169.1500	000.0	169.1500	000.0	A
AIR TO GROUND	14	168.4000	000.0	168.4000	000.0	A
<b>9. Prepared By (Resource Unit Leader)</b>			<b>Approved By (Planning Section Chief)</b>		<b>Date</b>	<b>Time</b>
JENNIFER NORTON			JILL JOHNSON		07/17/2024	2100

**Division/Group Assignment List (ICS 204 WF)**  
**Controlled Unclassified Information//Basic**

<b>1. Incident Name:</b>		<b>3.</b>	
PIONEER		<b>Branch:</b>  IV	<b>Division/Group:</b>  CONTINGENCY
<b>2. Operational Period:</b> 0700-2100			
Date/Time From: 07/18/2024 0700 THU	Date/Time To: 07/18/2024 2100 THU		
<b>4. Operations Personnel</b>			
<b>OPERATIONS CHIEF</b>	AARON ROWE, LONNIE NEWTON (T)	<b>BRANCH DIRECTOR</b>	TIM BARNETT
<b>DIVISION/GROUP SUPERVISOR</b>	HEIDI SPRENGER, ROY BOOTS (T)	<b>AIR OPS BRANCH DIRECTOR</b>	PAUL BALFOUR

**7. Special Instructions:**

- Do not cut trees >16", unless deemed a hazard tree
- Preferential order for tree retention, first keep: white bark pine, Ponderosa Pine, Douglas-Fir, then lodgepole pine
- No restrictions on brush removal
- \*\* Denotes available for Initial Attack
- Designated IA resources, including all of Structure/IA, are available for Initial Attack response per the Pioneer Fire IA Response Plan. Number and type of resources mobilized to a new start will be determined by anticipated or requested need. Resources will be led by overhead at the Strike Team Leader level or above.
  - o If Initial Attack occurs within the TFR, CWICC will coordinate with appropriate duty officer and contact Field Ops for response.
  - oField Operations will contact the Structure/IA Group Supervisor and/or Air Operations to coordinate response to new start.
  - oLocal forest Initial Attack frequencies will be used and provided in the IAP Communications Plan
  - oThe same process will be used for fires outside of TFR if assistance from Pioneer fire resources is requested.
  - oReport new fires directly to CWICC ("Wenatchee Dispatch") by radio or phone. CWICC: 509-884-3473

<b>8. Division/Group Communication Summary</b>						
Function	Channel	RX Frequency N/W	RX Tone/NAC	TX Frequency N/W	TX Tone/NAC	Mode
COMMAND	7	168.4750	123.0	165.4000	123.0	A
COMMAND	10	170.0125	123.0	165.2500	123.0	A
COMMAND	11	170.4125	123.0	165.9625	123.0	A
COMMAND	12	170.6875	123.0	166.5750	123.0	A
TACTICAL	3	168.6000	123.0	168.6000	123.0	A
AIR TO GROUND	13	169.1500	000.0	169.1500	000.0	A
AIR TO GROUND	14	168.4000	000.0	168.4000	000.0	A

<b>9. Prepared By (Resource Unit Leader)</b>		<b>Approved By (Planning Section Chief)</b>		<b>Date</b>	<b>Time</b>
JENNIFER NORTON		JILL JOHNSON		07/17/2024	2100

## Division/Group Assignment List (ICS 204 WF)

Controlled Unclassified Information//Basic

<b>1. Incident Name:</b>				<b>3.</b>		
PIONEER				<b>IV</b>	<b>Division/Group:</b>	
<b>2. Operational Period:</b> <span style="float: right;"><b>0700-2100</b></span>					<b>ROADS</b>	
Date/Time From: 07/18/2024 0700 THU		Date/Time To: 07/18/2024 2100 THU				
<b>4. Operations Personnel</b>						
<b>OPERATIONS CHIEF</b>		AARON ROWE, LONNIE NEWTON (T)		<b>BRANCH DIRECTOR</b>		TIM BARNETT
<b>DIVISION/GROUP SUPERVISOR</b>		FIDEL VERDUZCO, ERIN SPRINGER (T)		<b>AIR OPS BRANCH DIRECTOR</b>		PAUL BALFOUR
<b>5. Resources Assigned this Period</b>						
Strike Team / Task Force / Resource Designator	LWD	Leader	Number Persons	Drop Off PT./Time	Pick Up PT./Time	
O-517 TFLD	07/26	DUSTIN SILVEY	1	ICP/0700	ICP/2100	
O-612 TFLD (T)	07/30	ERIK HOTCHKISS	1	ICP/0700	ICP/2100	
O-429 HEQB	07/22	JONATHAN MCFARLAND	1	ICP/0700	ICP/2100	
O-566 HEQB	07/29	CHRISTOPHER WERNER	1	ICP/0700	ICP/2100	
O-603 HEQB (T)	07/30	RUSTIN NELSON	1	ICP/0700	ICP/2100	
E-76 WTS2 MOUNTAIN VIEW WILDFIRE	07/27	WICK FIFE	2	ICP/0700	ICP/2100	
E-83 WTS2 KING HYDROSEEDING	07/27	JOE IVIE	1	ICP/0700	ICP/2100	
E-172 WTS2 KIM KOZELISKY	07/24	RICHARD REYNOLDS	1	ICP/0700	ICP/2100	
**E-178 WTS2 NORTHERN CONSTRUCTION	07/25	BILL ACKERSON	1	ICP/0700	ICP/2100	
E-330 WTS2 MVP TEAM	07/25	DALE KONRAD	1	ICP/0700	ICP/2100	
E-333 WTS2 KIM KOZELISKY	07/25	JIM SMITH	1	ICP/0700	ICP/2100	
E-334 WTS2 PANTHER RIDGE FIRE LLC	07/25	DOUG STONE	1	ICP/0700	ICP/2100	
E-339 WTS2 ARCHER MOUNTAIN ENTERPRISES	07/28	JONATHAN EVANS	1	ICP/0700	ICP/2100	
E-355 WTS2 MOUNTAINVIEW WILDFIRE	07/28	BOB GIBSON	1	ICP/0700	ICP/2100	
E-356 WTS2 NORTHERN CONSTRUCTION	07/29	BOB HOLLANDSWORTH	1	ICP/0700	ICP/2100	
**E-92 DZR3 BATCHELOR EXCAVATION	07/23	JAY BATCHELOR	2	ICP/0700	ICP/2100	
<b>8. Division/Group Communication Summary</b>						
Function	Channel	RX Frequency N/W	RX Tone/NAC	TX Frequency N/W	TX Tone/NAC	Mode
COMMAND	7	168.4750	123.0	165.4000	123.0	A
COMMAND	8	169.5375	123.0	164.7125	123.0	A
COMMAND	10	170.0125	123.0	165.2500	123.0	A
COMMAND	11	170.4125	123.0	165.9625	123.0	A
TACTICAL	5	166.7750	123.0	166.7750	123.0	A
AIR TO GROUND	13	169.1500	000.0	169.1500	000.0	A
AIR TO GROUND	14	168.4000	000.0	168.4000	000.0	A
<b>9. Prepared By (Resource Unit Leader)</b>			<b>Approved By (Planning Section Chief)</b>		<b>Date</b>	<b>Time</b>
JENNIFER NORTON			JILL JOHNSON		07/17/2024	2100



**Division/Group Assignment List (ICS 204 WF)**  
**Controlled Unclassified Information//Basic**

<b>1. Incident Name:</b>				<b>3.</b>		
PIONEER				Branch:  IV	Division/Group:  ROADS	
<b>2. Operational Period:</b> 0700-2100						
Date/Time From: 07/18/2024 0700 THU		Date/Time To: 07/18/2024 2100 THU				
<b>4. Operations Personnel</b>						
<b>OPERATIONS CHIEF</b>		AARON ROWE, LONNIE NEWTON (T)		<b>BRANCH DIRECTOR</b>		TIM BARNETT
<b>DIVISION/GROUP SUPERVISOR</b>		FIDEL VERDUZCO, ERIN SPRINGER (T)		<b>AIR OPS BRANCH DIRECTOR</b>		PAUL BALFOUR
<b>5. Resources Assigned this Period</b>						
Strike Team / Task Force / Resource Designator		LWD	Leader	Number Persons	Drop Off PT./Time	Pick Up PT./Time
E-320 LOGT SILVER NICKEL LOGGING		07/25	JASON AYERS	1	ICP/0700	ICP/2100
E-321 LOGT SILVER NICKEL LOGGING		07/25	CHAD HOCKETT	1	ICP/0700	ICP/2100
E-322 LOGT SILVER NICKEL LOGGING		07/25	RON MCGINNEY	1	ICP/0700	ICP/2100
E-323 LOGT SILVER NICKEL LOGGING		07/25	DERICK RAIDAN	1	ICP/0700	ICP/2100
E-316 DUMP BCD CONTRACTING AND TREE		07/25	ALEXANDER STARK	1	ICP/0700	ICP/2100
E-317 DUMP WILLS TRUCKING AND EXEC		07/25	WILL KRICHBAUM	1	ICP/0700	ICP/2100
E-307 GRD1 JUSTIN PITTS TRUCKING		07/24	MIKE WOOTEN	2	ICP/0700	ICP/2100
E-308 GRD2 PETTET TRANSPORTATION		07/25	MARK ROWE	2	ICP/0700	ICP/2100
O-629 MEDIC 18		07/30	RICK KELLY	1	ICP/0700	ICP/2100
<b>6. Control Operations/Work Assignments:</b>						
<p><b>TASK:</b> Complete road repair on Antoine, 8140, 8020, and Black Canyon Roads.  <b>PURPOSE:</b> To return the roads affected by suppression traffic to their original state.  <b>END STATE:</b> Roads affected by fire suppression use are returned to pre-fire condition.</p>						
<b>7. Special Instructions:</b>						
<p>-Ensure hazard mitigations and IWI protocols are in place before taking action.          -Designated IA resources, including all of Structure/IA, are available for Initial Attack response per the Pioneer Fire IA Response Plan. Number and type of resources mobilized to a new start will be determined by anticipated or requested need. Resources will be led by overhead at the Strike Team Leader level or above.            o If Initial Attack occurs within the TFR, CWICC will coordinate with appropriate duty officer and contact Field Ops</p>						
<b>8. Division/Group Communication Summary</b>						
Function	Channel	RX Frequency N/W	RX Tone/NAC	TX Frequency N/W	TX Tone/NAC	Mode
COMMAND	7	168.4750	123.0	165.4000	123.0	A
COMMAND	8	169.5375	123.0	164.7125	123.0	A
COMMAND	10	170.0125	123.0	165.2500	123.0	A
COMMAND	11	170.4125	123.0	165.9625	123.0	A
TACTICAL	5	166.7750	123.0	166.7750	123.0	A
AIR TO GROUND	13	169.1500	000.0	169.1500	000.0	A
AIR TO GROUND	14	168.4000	000.0	168.4000	000.0	A
<b>9. Prepared By (Resource Unit Leader)</b>			<b>Approved By (Planning Section Chief)</b>		<b>Date</b>	<b>Time</b>
JENNIFER NORTON			JILL JOHNSON		07/17/2024	2100

**Division/Group Assignment List (ICS 204 WF)**  
**Controlled Unclassified Information//Basic**

<b>1. Incident Name:</b>				<b>3.</b>		
PIONEER				Branch:  IV	Division/Group:  ROADS	
<b>2. Operational Period:</b> 0700-2100						
Date/Time From: 07/18/2024 0700 THU		Date/Time To: 07/18/2024 2100 THU				
<b>4. Operations Personnel</b>						
<b>OPERATIONS CHIEF</b>	AARON ROWE, LONNIE NEWTON (T)			<b>BRANCH DIRECTOR</b>	TIM BARNETT	
<b>DIVISION/GROUP SUPERVISOR</b>	FIDEL VERDUZCO, ERIN SPRINGER (T)			<b>AIR OPS BRANCH DIRECTOR</b>	PAUL BALFOUR	
<b>7. Special Instructions:</b>						
<p>for response.</p> <ul style="list-style-type: none"> <li>o Field Operations will contact the Structure/IA Group Supervisor and/or Air Operations to coordinate response to new start.</li> <li>o Local forest Initial Attack frequencies will be used and provided in the IAP Communications Plan</li> <li>o The same process will be used for fires outside of TFR if assistance from Pioneer fire resources is requested.</li> <li>o Report new fires directly to CWICC ("Wenatchee Dispatch") by radio or phone. CWICC: 509-884-3473</li> </ul>						
<b>8. Division/Group Communication Summary</b>						
Function	Channel	RX Frequency N/W	RX Tone/NAC	TX Frequency N/W	TX Tone/NAC	Mode
COMMAND	7	168.4750	123.0	165.4000	123.0	A
COMMAND	8	169.5375	123.0	164.7125	123.0	A
COMMAND	10	170.0125	123.0	165.2500	123.0	A
COMMAND	11	170.4125	123.0	165.9625	123.0	A
TACTICAL	5	166.7750	123.0	166.7750	123.0	A
AIR TO GROUND	13	169.1500	000.0	169.1500	000.0	A
AIR TO GROUND	14	168.4000	000.0	168.4000	000.0	A
<b>9. Prepared By (Resource Unit Leader)</b>			<b>Approved By (Planning Section Chief)</b>		<b>Date</b>	<b>Time</b>
JENNIFER NORTON			JILL JOHNSON		07/17/2024	2100

## Division/Group Assignment List (ICS 204 WF)

Controlled Unclassified Information//Basic

<b>1. Incident Name:</b>				<b>3.</b>			
PIONEER				<b>Branch:</b>  IV		<b>Division/Group:</b>  STRUCTURE/IA	
<b>2. Operational Period:</b> 0700-2100							
Date/Time From: 07/18/2024 0700 THU		Date/Time To: 07/18/2024 2100 THU					
<b>4. Operations Personnel</b>							
<b>OPERATIONS CHIEF</b>		AARON ROWE, LONNIE NEWTON (T)		<b>BRANCH DIRECTOR</b>		TIM BARNETT	
<b>DIVISION/GROUP SUPERVISOR</b>		JON STONELAKE, NICK WIGLE (T)		<b>AIR OPS BRANCH DIRECTOR</b>		PAUL BALFOUR	
<b>5. Resources Assigned this Period</b>							
Strike Team / Task Force / Resource Designator		LWD	Leader	Number Persons	Drop Off PT./Time	Pick Up PT./Time	
O-491 SOFR		07/24	JONATHAN T LEE	1	ICP/0700	ICP/2100	
O-424 TFLD		07/23	SAMUEL DAUGHERTY	1	ICP/0700	ICP/2100	
O-669 TFLD		07/31	KENTON BASS	1	ICP/0700	ICP/2100	
O-495 TFLD (T)		07/23	ROY TAYLOR	1	ICP/0700	ICP/2100	
C-42 CR2I SRV #14		07/22	UBALDO VIERA	20	ICP/0700	ICP/2100	
C-48 CRW2 NORTH PACIFIC FORESTRY		07/24	OSCAR SANCHES	20	ICP/0700	ICP/2100	
C-49 CRW2 NORTH PACIFIC FORESTRY		07/23	BERTHA MARTINEZ	20	ICP/0700	ICP/2100	
O-482 TFLD		07/22	MARCUS WELLS	1	ICP/0700	ICP/2100	
O-483 STEN (T)		07/22	CHUCK W KOCHER	1	ICP/0700	ICP/2100	
E-281 ENG5 CHELAN CO. FD #6		07/22	AUSTIN SABEDRA	3	ICP/0700	ICP/2100	
E-282 ENG5 CHELAN CO FD#3		07/22	NATHAN RICHMAN	2	ICP/0700	ICP/2100	
E-283 ENG3 CHELAN F&R		07/22	TROY KEENE	3	ICP/0700	ICP/2100	
E-284 ENG5 CITY OF MOSES LAKE		07/22	LUKE GARRISON	3	ICP/0700	ICP/2100	
E-285 ENG3 CHELAN CO FD #9		07/22	ANLYN FLAKE	3	ICP/0700	ICP/2100	
E-232 ENG5 MONTANA DNRC		07/22	SOL ARNO	3	ICP/0700	ICP/2100	
E-233 ENG5 MONTANA DNRC		07/20	BRAEDEN MIKKELSON	3	ICP/0700	ICP/2100	
<b>8. Division/Group Communication Summary</b>							
Function	Channel	RX Frequency N/W	RX Tone/NAC	TX Frequency N/W	TX Tone/NAC	Mode	
COMMAND	7	168.4750	123.0	165.4000	123.0	A	
COMMAND	10	170.0125	123.0	165.2500	123.0	A	
TACTICAL	4	166.7250	123.0	166.7250	123.0	A	
AIR TO GROUND	13	169.1500	000.0	169.1500	000.0	A	
AIR TO GROUND	14	168.4000	000.0	168.4000	000.0	A	
<b>9. Prepared By (Resource Unit Leader)</b>			<b>Approved By (Planning Section Chief)</b>			<b>Date</b>	<b>Time</b>
JENNIFER NORTON			JILL JOHNSON			07/17/2024	2100

## Division/Group Assignment List (ICS 204 WF)

Controlled Unclassified Information//Basic

<b>1. Incident Name:</b>				<b>3.</b>			
PIONEER				<b>Branch:</b>  IV		<b>Division/Group:</b>  STRUCTURE/IA	
<b>2. Operational Period:</b> 0700-2100							
Date/Time From: 07/18/2024 0700 THU		Date/Time To: 07/18/2024 2100 THU					
<b>4. Operations Personnel</b>							
<b>OPERATIONS CHIEF</b>		AARON ROWE, LONNIE NEWTON (T)		<b>BRANCH DIRECTOR</b>		TIM BARNETT	
<b>DIVISION/GROUP SUPERVISOR</b>		JON STONELAKE, NICK WIGLE (T)		<b>AIR OPS BRANCH DIRECTOR</b>		PAUL BALFOUR	
<b>5. Resources Assigned this Period</b>							
Strike Team / Task Force / Resource Designator		LWD	Leader	Number Persons	Drop Off PT./Time	Pick Up PT./Time	
E-234 ENG6 IDAHO IDL		07/21	COLE SCHIERMEISTER	4	ICP/0700	ICP/2100	
E-179 WTS2 KING HYDROSEEDING		07/28	BILL BLACK	1	ICP/0700	ICP/2100	
O-460 MEDIC 17		07/22	TREVOR LEARY	1	ICP/0700	ICP/2100	
O-461 MEDIC 16		07/22	MEDIC 16	1	ICP/0700	ICP/2100	
<b>6. Control Operations/Work Assignments:</b>							
<p><b>TASK:</b> Continue structure assessment northeast of Manson and complete structure protection plan for Manson. Have resources prepared for IA response.</p> <p><b>PURPOSE:</b> Plan for and mitigate potential long-term impact to communities down lake from fire. Provide a resource to respond to IA fires.</p> <p><b>END STATE:</b> Structure Plan has been developed and mitigation implemented for protection of structures in and around Manson.</p>							
<b>7. Special Instructions:</b>							
<p>-Ensure hazard mitigations and IWI protocols are in place before taking action.</p> <p>-All Structure/IA resources are available for Initial Attack response per the Pioneer Fire IA Response Plan. Number and type of resources mobilized to a new start will be determined by anticipated or requested need. Resources will be led by overhead at the Strike Team Leader level or above.</p> <ul style="list-style-type: none"> <li>o If Initial Attack occurs within the TFR, CWICC will coordinate with appropriate duty officer and contact Field Ops for response.</li> <li>o Field Operations will contact the Structure/IA Group Supervisor and/or Air Operations to coordinate response to new start.</li> <li>o Local forest Initial Attack frequencies will be used and provided in the IAP Communications Plan</li> <li>o The same process will be used for fires outside of TFR if assistance from Pioneer fire resources is requested.</li> <li>o Report new fires directly to CWICC ("Wenatchee Dispatch") by radio or phone. CWICC: 509-884-3473</li> </ul>							
<b>8. Division/Group Communication Summary</b>							
Function	Channel	RX Frequency N/W	RX Tone/NAC	TX Frequency N/W	TX Tone/NAC	Mode	
COMMAND	7	168.4750	123.0	165.4000	123.0	A	
COMMAND	10	170.0125	123.0	165.2500	123.0	A	
TACTICAL	4	166.7250	123.0	166.7250	123.0	A	
AIR TO GROUND	13	169.1500	000.0	169.1500	000.0	A	
AIR TO GROUND	14	168.4000	000.0	168.4000	000.0	A	
<b>9. Prepared By (Resource Unit Leader)</b>			<b>Approved By (Planning Section Chief)</b>			<b>Date</b>	<b>Time</b>
JENNIFER NORTON			JILL JOHNSON			07/17/2024	2100

## Division/Group Assignment List (ICS 204 WF)

Controlled Unclassified Information//Basic

<b>1. Incident Name:</b>				<b>3.</b>			
PIONEER				<b>Branch:</b>		<b>Division/Group:</b>	
<b>2. Operational Period:</b> 0700-2100							
Date/Time From: 07/18/2024 0700 THU		Date/Time To: 07/18/2024 2100 THU		<b>BOAT</b>			
<b>4. Operations Personnel</b>							
<b>OPERATIONS CHIEF</b>		AARON ROWE, LONNIE NEWTON (T)		<b>DIVISION/GROUP SUPERVISOR</b>		SAM STEINSHOUER, TOSTEN KULAAS	
<b>AIR OPS BRANCH DIRECTOR</b>		PAUL BALFOUR					
<b>5. Resources Assigned this Period</b>							
Strike Team / Task Force / Resource Designator		LWD	Leader		Number Persons	Drop Off PT./Time	Pick Up PT./Time
O-459 TFLD		07/21	MIKE EMERICK		1	STEHEKIN/0700	STEHEKIN/2100
O-458 TFLD LUCERNE HARBOR MASTER		07/22	GREG SEALS		1	LUCERNE/0700	LUCERNE/2100
O-559 TFLD		07/27	KERRY WEBSTER		1	LUCERNE/0700	LUCERNE/2100
O-636 TFLD (T)		07/31	SCOTT D GALLAGHER		1	LUCERNE/0700	LUCERNE/2100
O-354 HEQB		07/23	LOGAN PIKE		1	LUCERNE/0700	LUCERNE/2100
O-310 HEQB		07/20	DAVID REPNIK		1	LUCERNE/0700	LUCERNE/2100
A-1.18 HECM			VINNY ADAMS		1	LUCERNE/0700	LUCERNE/2100
A-94.13 HECM		07/19	LORA ANDERSON		1	LUCERNE/0700	LUCERNE/2100
LEND LEASE FFT1			CASE CRUTCHER		1	LUCERNE/0700	LUCERNE/2100
O-609 FFT2		07/29	RUEBEN E MILLER		1	LUCERNE/0700	LUCERNE/2100
O-607 FFT1 (T)		07/29	CHELSEA SCHAEFER		1	LUCERNE/0700	LUCERNE/2100
O-469 TFLD DP 84 HARBOR MASTER		07/23	BRIAN JAMES		1	ICP/0700	ICP/2100
O-598 TFLD		07/28	TODD DORMAIER		1	ICP/0700	ICP/2100
O-263 TFLD (T)		07/18	AARON PEDERSEN		1	ICP/0700	ICP/2100
O-638 TFLD (T)		07/30	MAGEN DUFURRENA		1	ICP/0700	ICP/2100
<b>8. Division/Group Communication Summary</b>							
Function	Channel	RX Frequency N/W	RX Tone/NAC	TX Frequency N/W	TX Tone/NAC	Mode	
COMMAND	7	168.4750	123.0	165.4000	123.0	A	
COMMAND	8	169.5375	123.0	164.7125	123.0	A	
COMMAND	9	170.4500	123.0	168.1000	123.0	A	
COMMAND	10	170.0125	123.0	165.2500	123.0	A	
COMMAND	11	170.4125	123.0	165.9625	123.0	A	
TACTICAL	6	168.2500	123.0	168.2500	123.0	A	
AIR TO GROUND	13	169.1500	000.0	169.1500	000.0	A	
AIR TO GROUND	14	168.4000	000.0	168.4000	000.0	A	
<b>9. Prepared By (Resource Unit Leader)</b>			<b>Approved By (Planning Section Chief)</b>			<b>Date</b>	<b>Time</b>
JENNIFER NORTON			JILL JOHNSON			07/17/2024	2100

**Division/Group Assignment List (ICS 204 WF)**  
**Controlled Unclassified Information//Basic**

<b>1. Incident Name:</b>			<b>3.</b>			
PIONEER			<b>Branch:</b>		<b>Division/Group:</b>	
<b>2. Operational Period:</b> 0700-2100			BOAT			
Date/Time From: 07/18/2024 0700 THU		Date/Time To: 07/18/2024 2100 THU				
<b>4. Operations Personnel</b>						
<b>OPERATIONS CHIEF</b>		AARON ROWE, LONNIE NEWTON (T)		<b>DIVISION/GROUP SUPERVISOR</b>		SAM STEINSHOUER, TOSTEN KULAAS
<b>AIR OPS BRANCH DIRECTOR</b>		PAUL BALFOUR				
<b>5. Resources Assigned this Period</b>						
Strike Team / Task Force / Resource Designator		LWD	Leader	Number Persons	Drop Off PT./Time	Pick Up PT./Time
LEND LEASE FFT2			COOPER CATES	1	ICP/0700	ICP/2100
O-443 HECM (T)		07/25	JASON A SILVESTRI	1	ICP/0700	ICP/2100
O-504 HECM (T)		07/26	ANDREW BAKER	1	ICP/0700	ICP/2100
E-1 TBOT WA-NCP BOAT *CWN			SONJA SHAW	1	STEHEKIN/0700	STEHEKIN/2100
E-3 TBOT CHELAN CO. F&R#7 *O/S, *N/O (LAKE SHORE)			BRANDON ASHER	2	FS DOCK/0700	FS DOCK/2100
E-12 TBOT CHELAN RD *M-SA			DICK GORDON	1	FS DOCK/0700	FS DOCK/2100
E-43 TBOT LLAMAS BOAT *O/S			GAYLE THOMAS	1	FS DOCK/0700	FS DOCK/2100
E-91 TBOT DNR/MUD PUPPY *N/O		07/26	CRAIG INDERWIESEN	1	LUCERNE/0700	LUCERNE/2100
E-98 TBOT CHELAN COUNTY SHERIFFS *O/S			RICH MAGNUSSEN	2	FS DOCK/0700	FS DOCK/2100
E-120 TBOT PILGRIM		07/17	KIP ZWOLENSKI	1	LUCERNE/0700	LUCERNE/2100
E-121 TBOT BRINNON FIRE *N/O		07/19	CHRISTOPHER DOLAN	2	LUCERNE/0700	LUCERNE/2100
E-201 TBOT SEA FALCON		07/21	CHRIS WEST	2	FS DOCK/0700	FS DOCK/2100
E-202 TBOT RIVER RUNNER *N/O (LAKE SHORE)		07/21	JEN GAYLORD	2	FS DOCK/0700	FS DOCK/2100
E-295 TBOT PUGET PROTECTOR *N/O		07/24	BECK CROSBY	2	STEHEKIN/0700	STEHEKIN/2100
E-296 TBOT FRV #9 *N/O		07/24	MATT RYLACK	2	LUCERNE/0700	LUCERNE/2100
E-297 TBOT PIONEER PREDATOR			TOM KOVAL	2	LUCERNE/0700	LUCERNE/2100
<b>8. Division/Group Communication Summary</b>						
Function	Channel	RX Frequency N/W	RX Tone/NAC	TX Frequency N/W	TX Tone/NAC	Mode
COMMAND	7	168.4750	123.0	165.4000	123.0	A
COMMAND	8	169.5375	123.0	164.7125	123.0	A
COMMAND	9	170.4500	123.0	168.1000	123.0	A
COMMAND	10	170.0125	123.0	165.2500	123.0	A
COMMAND	11	170.4125	123.0	165.9625	123.0	A
TACTICAL	6	168.2500	123.0	168.2500	123.0	A
AIR TO GROUND	13	169.1500	000.0	169.1500	000.0	A
AIR TO GROUND	14	168.4000	000.0	168.4000	000.0	A
<b>9. Prepared By (Resource Unit Leader)</b>			<b>Approved By (Planning Section Chief)</b>		<b>Date</b>	<b>Time</b>
JENNIFER NORTON			JILL JOHNSON		07/17/2024	2100

## Division/Group Assignment List (ICS 204 WF)

Controlled Unclassified Information//Basic

<b>1. Incident Name:</b>				<b>3.</b>			
PIONEER				<b>Branch:</b>		<b>Division/Group:</b>	
<b>2. Operational Period:</b> 0700-2100							
Date/Time From: 07/18/2024 0700 THU		Date/Time To: 07/18/2024 2100 THU		<b>BOAT</b>			
<b>4. Operations Personnel</b>							
<b>OPERATIONS CHIEF</b>		AARON ROWE, LONNIE NEWTON (T)		<b>DIVISION/GROUP SUPERVISOR</b>		SAM STEINSHOUER, TOSTEN KULAAS	
<b>AIR OPS BRANCH DIRECTOR</b>		PAUL BALFOUR					
<b>5. Resources Assigned this Period</b>							
Strike Team / Task Force / Resource Designator		LWD	Leader	Number Persons	Drop Off PT./Time	Pick Up PT./Time	
<b>6. Control Operations/Work Assignments:</b>							
<p><b>Task:</b> Provide logistical needs for all fire activities on navigable waters.</p> <p><b>Purpose:</b> Adequately support the needs of incident personnel in areas not accessible by roads.</p> <p><b>End state:</b> Deliver supplies and personnel providing a timely, safe and effective operation.</p>							
<b>7. Special Instructions:</b>							
<p>-Follow instructions in IAP for requesting Ferry Tickets.</p> <p>-All emergency medical requests for boats go through Pioneer Communications.</p> <p>-* O/S – Operator Swaps As Needed, *CWN – Call When Needed, *M-SA – Operator takes every Sunday off</p> <p>-*N/O- Night Operation Capable</p> <p>-E-297 TBOT Pioneer Predator, Double shift capable Day/Night starting 07-17-24</p> <p>-E-3 TBOT Chelan Co. F&amp;R #7, Double shift capable Day/Night starting 07-17-24</p> <p>-Designated IA resources, including all of Structure/IA, are available for Initial Attack response per the Pioneer Fire IA Response Plan. Number and type of resources mobilized to a new start will be determined by anticipated or requested need. Resources will be led by overhead at the Strike Team Leader level or above.</p> <ul style="list-style-type: none"> <li>o If Initial Attack occurs within the TFR, CWICC will coordinate with appropriate duty officer and contact Field Ops for response.</li> <li>o Field Operations will contact the Structure/IA Group Supervisor and/or Air Operations to coordinate response to new start.</li> <li>o Local forest Initial Attack frequencies will be used and provided in the IAP Communications Plan</li> <li>o The same process will be used for fires outside of TFR if assistance from Pioneer fire resources is requested.</li> <li>o Report new fires directly to CWICC (“Wenatchee Dispatch”) by radio or phone. CWICC: 509-884-3473</li> </ul>							
<b>8. Division/Group Communication Summary</b>							
Function	Channel	RX Frequency N/W	RX Tone/NAC	TX Frequency N/W	TX Tone/NAC	Mode	
COMMAND	7	168.4750	123.0	165.4000	123.0	A	
COMMAND	8	169.5375	123.0	164.7125	123.0	A	
COMMAND	9	170.4500	123.0	168.1000	123.0	A	
COMMAND	10	170.0125	123.0	165.2500	123.0	A	
COMMAND	11	170.4125	123.0	165.9625	123.0	A	
TACTICAL	6	168.2500	123.0	168.2500	123.0	A	
AIR TO GROUND	13	169.1500	000.0	169.1500	000.0	A	
AIR TO GROUND	14	168.4000	000.0	168.4000	000.0	A	
<b>9. Prepared By (Resource Unit Leader)</b>			<b>Approved By (Planning Section Chief)</b>			<b>Date</b>	<b>Time</b>
JENNIFER NORTON			JILL JOHNSON			07/17/2024	2100

AIR OPERATIONS SUMMARY ICS-220						Time Prepared 18:00		Date Prepared 7/17/2024		Prepared By Paul Balfour - AOBD			
Incident Name / Number Pioneer / WA-SES-000173		Sunrise 05:23	Sunset 20:50	Airport S10	Pumpkin 21:20	Shutdown 21:00		Operational Period - Date 7/18/2024		Operational Period - Time 0700-2100			
General Remarks, Safety Notes, Hazards, Air Operations Special Equipment, etc.:						Helibase Information		TFR		Medical Ship Information			
<p>*Order All Aircraft over Command to Helibase.            *All GPS coordinates to be collected in Degrees and Decimal Minutes (DMM).            *Be mindful of all overhead and environmental hazards while working with aircraft.            *Clear drop area/line before initiating drop sequence.            *If dipping out of Columbia River, sanitize buckets before changing water sources.            *** WINDS: return to helibase if winds become unmanageable.            *Stehekin Airport Closed</p> <p>*Aviation daily cost to: 2024.pioneer.finance@firenet.gov            *Aviation daily cost to: pioneerhelibase2024@gmail.com</p> <p>Paul Wolf Washington State Airport Manager (360) 618-2477</p>						<p><b>Primary:</b>  <b>Pioneer HB (Chelan Airport)</b>            Location: 47 51.96 N / 119 56.56 W            Phone: (971) 762-8575</p> <p><b>Type 1 Helicopters:</b>  <b>Valley HB (Methow Valley Airport)</b>            Location: 48 25.567 N / 120 08.513 W            Phone: (971) 727-7255</p>		<p>(A-74) Surface to 10,000'  <b>4/2760 TFR Freq 123.4000</b>            In Effect - 24 Hours</p> <p><b>Helispots</b>            H-1   48 10.755' N / 120 31.803' W            H-5   48 12.162' N / 120 35.447' W            H-10   48 14.050' N / 120 36.461' W            H12   48 13.325' N / 120 35.908' W            H-14 (Stehekin A/P)   48 20.75' N / 120 43.25' W            H-16   48 07.74' N / 120 29.55' W            H-25   47 59.212' N / 120 16.526' W            H-40   48 06.357' N / 120 20.452' W</p>		<p><b>Medivac/Medical Transport Ship:</b>            Operational Hours: 0900 to 2100            Call Pioneer Helibase 971.762.8575</p> <p><b>Short-Haul Platform:</b>            Operational Hours: 0900 to 2100            Order through Pioneer Helibase</p>			
Incident Frequencies	RX	Tone	TX	Tone	AM/FM	Position	Name	Phone	EQUIPMENT/SUPPLIES				
Air to Air Primary (A-8)	123.4000		123.4000		AM	AOBD	Paul Balfour	(509) 993-8739	Commo Trailer (Pioneer)	E-20			
Air to Air Secondary (A-9)	118.2750		118.2750		AM	AOBD(t)	Kelly Hedgepeth	(541) 805-8416	Wash Station (Pioneer)	E-47			
						ASGS	Tim Lyda	(541) 761-2676	Office Trailer (Pioneer)	E-224			
A/G Pri Tactical (A-10)	169.1500		169.1500		FM	ASGS(t)	Heather Wonenberg	(209) 347-7546	Water Tender (Pioneer)	E-77			
A/G Sec Operational (A-11)	168.4000		168.4000		FM	Air Attack	Bob Madden	(541) 350-0021	Water Tender (Pioneer)	E-14			
						Air Attack (t)	Zak Tayer	(509) 952-7419	Commo Trailer (Valley)	E-150			
TOLC	166.6125		166.6125		FM	HEBM Pioneer	Jeff Quick	(928) 853-3027	Water Tender (Valley)	E-158			
						HEBM(t) Pioneer	Alex Watson	(541) 240-9330	Water Tender (Valley)	E-346			
DECK	163.1000		163.1000		FM	HEBM Valley	Randy McLandress	(509) 668-7243					
						HEBM(t) Valley	Cory Winkelbauer	(906) 420-1775					
COMMAND	See ICS 205 Communications Plan												
						UR-33	Kelly Lewis	(208) 721-0232					
VMED 29	155.3475	156.7	155.3475	156.7	FM	UASL-31	Patrick Clark	(661) 342-6955					
AIR GUARD	168.6250		168.6250	110.9	FM	Entiat IHC/UR-46	Hannah Coolidge	(301) 919-9973					
National Flight Following	168.6500	110.9	168.6500	110.9	FM	CWICC	Aircraft Desk	(509) 884-3473 ext. 2					
						OWF-UAO	Ben Dronen	(509) 264-4784					
HELICOPTERS - Assigned							HELICOPTERS - GACC Prepo and Lend/Lease						
FAA #	TYPE	Make/Model	Helibase	Start	Avail	Remarks	FAA #	TYPE	Make/Model	Airport	Start	Avail	Remarks
HB-16FH (A-81)	1	UH-60	Valley	0800	0900	BKT/LL	H-125CL (A-91)	3	AS-350B3e	WA77	0800	0900	NPS MOCA Short Haul/Recon
HB-161KA (A-24)	1	K-1200	Valley	0800	0900	BKT/LL							Available out of Enumclaw Base
HB-344RA (A-45)	1	CH-47D	Valley	0800	0900	BKT/LL							
N628CK (A-162)	1	SH-3H	Valley	0800	0900	BKT/LL							
N381SH (A-129)	1	UH-60	Valley	0800	0900	On Loan Cougar Fire							
H-527 (H-811KA) (A-94)	2	Bell 212HP	Chelan	0800	0900	BKT/LL/Pax							
H-669H (A-98)	2	Bell 205 A1 ++	Chelan	0800	0900	BKT/LL/Pax							
H-407RL (A-1)	3	Bell 407HP	Chelan	0800	0900	Short Haul/Recon							
UAS							FIXED WING - AirTanker/AA/HLCO						
Call Sign	Type	Make/Model	Base	Start	Avail	Remarks	FAA #	Call Sign	Make/Model	Base	Start	Avail	Remarks
UR-31	3	AltaX	Lucerne	0600	2200	IR/PSD	N-155AV	AA-5AV	King Air	EAT	0900	1000	Assigned AA
UR-46 Entiat IHC	4	Anafi	DIV A	0600	2200	IR							
UR-33	4	Anafi	DIV S	0600	2200	Kelly Lewis (FOBS)							



# INCIDENT RADIO COMMUNICATIONS PLAN (ICS 205)

Controlled Unclassified Information//Basic

<b>1. Incident Name:</b>	<b>2. Date/Time Prepared:</b>	<b>3. Operational Period:</b> 0700-2100	
PIONEER	Date: 07/17/2024 Time: 2000	Date/Time From: 07/18/2024 0700 THU	Date/Time To: 07/18/2024 2100 THU

**4. Basic Radio Channel Use:**

Zone Group	Ch #	Function	Channel Name/Trunked Radio System Talkgroup	Assignment	RX Freq	RX Tone/NAC	TX Freq	TX Tone/NAC	Mode (A,D, or M)	Remarks
	1	TACTICAL	TAC 1	DIV D & S	168.0500	123.0	168.0500	123.0	A	
	2	TACTICAL	TAC 2	DIV A	168.2000	123.0	168.2000	123.0	A	
	3	TACTICAL	TAC 3	CONTINGENCY	168.6000	123.0	168.6000	123.0	A	
	4	TACTICAL	TAC 4	STRUCTURE / IA	166.7250	123.0	166.7250	123.0	A	
	5	TACTICAL	TAC 5	ROADS	166.7750	123.0	166.7750	123.0	A	
	6	TACTICAL	TAC 6	BOAT	168.2500	123.0	168.2500	123.0	A	
	7	COMMAND	CMD 7	ALL	168.4750	123.0	165.4000	123.0	A	DNR CHELAN BUTTE RPTR
	8	COMMAND	CMD 8	ALL	169.5375	123.0	164.7125	123.0	A	OLD MAID MTN
	9	COMMAND	CMD 9	ALL	170.4500	123.0	168.1000	123.0	A	MOORE MTN
	10	COMMAND	CMD 10	ALL	170.0125	123.0	165.2500	123.0	A	SLIDE RIDGE
	11	COMMAND	CMD 11	ALL	170.4125	123.0	165.9625	123.0	A	FOX PEAK
	12	COMMAND	CMD 12	ALL	170.6875	123.0	166.5750	123.0	A	GOAT MTN
	13	AIR TO GROUND	A/G PRI	ALL DIVS	169.1500	000.0	169.1500	000.0	A	
	14	AIR TO GROUND	A/G SEC	ALL DIVS	168.4000	000.0	168.4000	000.0	A	
	15	AIR TO GROUND	VMED 29	ALL DIVS	155.3475	156.7	155.3475	156.7	A	AIR EMS COORD
	16	AIR GUARD	AIRGUARD	ALL DIVS	168.6250	000.0	168.6250	110.9	A	EMERGENCY AIRCRAFT CONTACT

**5. Special Instructions:** 24-hour staffing: PIONEER COMMUNICATIONS PHONE: (208) 891-8093 / CURRENT CLONE "PIE 7-15" New Clone 7/15/24.

<b>6. Prepared By</b> (Communications Unit Leader)	Name: MISSY PARKER	Signature: <i>Missy Parker</i>
ICS 205	IAP Page	Date/Time: 07/17/2024 2000

# INCIDENT RADIO COMMUNICATIONS PLAN (ICS 205)

Controlled Unclassified Information//Basic

<b>1. Incident Name:</b>	<b>2. Date/Time Prepared:</b>	<b>3. Operational Period:</b> 0700-2100	
PIONEER - LOCAL IA	Date: 07/17/2024 Time: 2000	Date/Time From: 07/18/2024 0700 THUR	Date/Time To: 07/18/2024 2100 THUR

**4. Basic Radio Channel Use:**

Zone Group	Ch #	Function	Channel Name/Trunked Radio System Talkgroup	Assignment	RX Freq	RX Tone/NAC	TX Freq	TX Tone/NAC	Mode (A,D, or M)	Remarks
	1	COMMAND	FIRE 1		154.4300	110.9	153.8900	D051	A	RIVERCOM DISPATCH
	2	COMMAND	CO NORTH		155.3550	100.0	150.7900	100.0	A	COUNTY NORTH REPEATER
	3	TACTICAL	GOAT TAC RP		159.0675	110.9	153.8000	100.0	A	COUNTY RPTR - GOAT MTN
	4	TACTICAL	ORANGE		154.2650	107.2	154.2650	107.2	A	
	5	TACTICAL	BLACK		154.3400	151.4	154.3400	151.4	A	
	6	TACTICAL	DNR COM		151.4150	103.5	151.4150	103.5	A	
	7	COMMAND	DNR CHELAN		159.2250	156.7	151.4750	156.7	A	CHELAN BUTTE
	8	AIR TO GROUND	DNR A/G 1		159.2700	103.5	159.2700	103.5	A	
	9	COMMAND	OLD MAID		173.0500	146.2	164.9125	136.5	A	FS RPTR-OLD MAID MTN
	10	TACTICAL	WEN TAC		167.5500	000.0	167.5500	000.0	A	
	11	COMMAND	FS GOAT		173.3500	146.2	165.0125	118.8	A	GOAT MTN
	12	COMMAND	FS SLIDE		173.0500	146.2	164.9125	141.3	A	SLIDE RIDGE
	13	AIR TO GROUND	FS A/G 40		167.4500	000.0	167.4500	000.0	A	
	14	TACTICAL	WEN PROJ		168.6750	000.0	168.6750	000.0	A	
	15	COMMAND	FS BADGER		173.0500	146.2	164.9125	127.3	A	BADGER MTN
	16	TACTICAL	RED NET		153.8300	000.0	153.8300	000.0	A	

**5. Special Instructions:** 24-hour staffing: PIONEER COMMUNICATIONS PHONE: (208) 891-8093 / CURRENT CLOSE "Local IA" 7/15/24.

<b>6. Prepared By</b> (Communications Unit Leader)	Name: MISSY PARKER	Signature: <i>Missy Parker</i>
ICS 205	IAP Page	Date/Time: 07/17/2024 2000

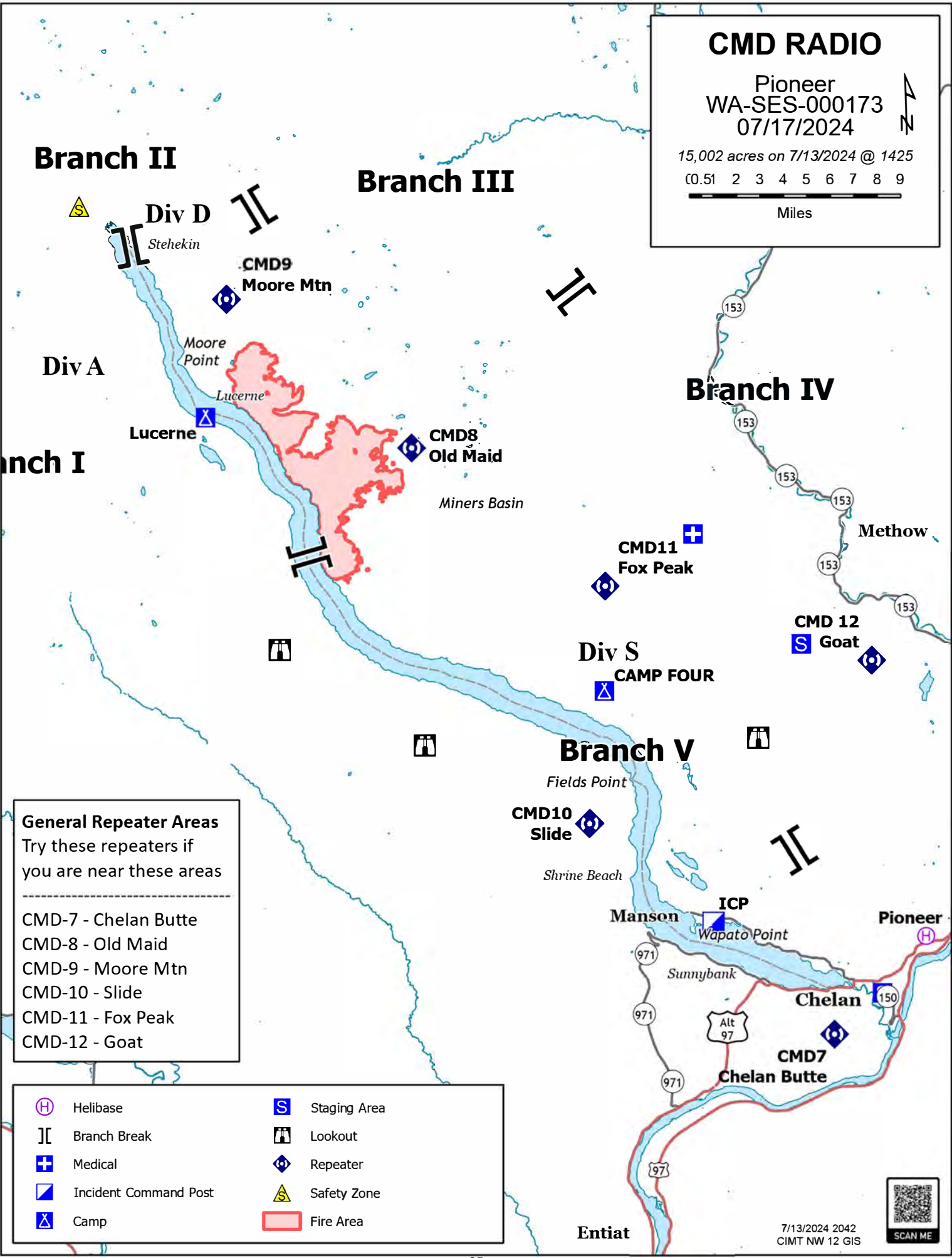
# CMD RADIO

Pioneer  
WA-SES-000173  
07/17/2024

15,002 acres on 7/13/2024 @ 1425

0.51 2 3 4 5 6 7 8 9

Miles



## General Repeater Areas

Try these repeaters if you are near these areas

- 
- CMD-7 - Chelan Butte
- CMD-8 - Old Maid
- CMD-9 - Moore Mtn
- CMD-10 - Slide
- CMD-11 - Fox Peak
- CMD-12 - Goat

	Helibase		Staging Area
	Branch Break		Lookout
	Medical		Repeater
	Incident Command Post		Safety Zone
	Camp		Fire Area

Entiat

7/13/2024 2042  
CIMT NW 12 GIS



## **Resource Advice**

Lead READ: Brigitte Ranne 509-860-7016, [brigitte.ranne@usda.gov](mailto:brigitte.ranne@usda.gov)

REAF: Hector Rodriguez 509-393-5379, [Hector.Rodriguez3@usda.gov](mailto:Hector.Rodriguez3@usda.gov)

REAF: Eireann Pederson 360-854-8197, [eireann.pederson@usda.gov](mailto:eireann.pederson@usda.gov)

REAF: Carrissa Camenson 360-899-7147, [carissa.camenson@usda.gov](mailto:carissa.camenson@usda.gov)

### *MIST for Spike Camp and Lucerne Forward Operating Base Management*

- Employ minimum impact suppression tactics (MIST) where feasible, especially in remote or sensitive areas.
- If spike camps are necessary, use existing, or previously impacted campsites where available. If existing campsites are not available; use your local resource advisor to help identify the most resilient sites in rocky or sandy soils. Avoid camping in wet meadows, along streams, or on lake shores.
- Store food properly so that it is not accessible to wildlife. Consider hanging food in trees at least 15 feet off the ground and 5 feet from the trunk of the tree, or store food in sealable containers. Store food away from the campsite (300 feet is ideal) to reduce the risk of human and bear (and rodent!) conflicts.
- Do not let garbage and food scraps accumulate in camp. All garbage and food scraps need to be removed from the camp ASAP and before leaving the site.
- Minimize disturbance to land in preparing bedding and campfire sites. Do not clear vegetation, trench, or excavate a flat spot to create bedding sites.
- Do not use nails in trees. Don't construct camp furniture.
- If a campfire is built for warmth in the evening, build either a pit or mound fire. Use dead and down firewood. Use small diameter wood that burns down more cleanly. Don't burn plastics or aluminum - pack it out with the rest of the camp garbage.
- In small spike camp situations (not Lucerne), individuals should use the "cat-hole" method of disposing of human waste. Toilet seats should be located a minimum of 200 feet from water sources. Holes should be dug 6-8 inches deep.
- In large or long term spike the camps use helicopters, boats, or pack stock to deliver portable backcountry latrines and remove human waste if necessary. If the camp does not have adequate pack, boat, or air support for human waste management, establish community latrines well away from water sources and common areas. Use human waste bags, if necessary

### *Dipping and Drafting*

- No cross-dipping between water bodies. All buckets or snorkels should be cleaned, inspected, and dried in the sun if they must be used between lakes. Dipping in small lakes must be pre-approved by the READ or AA.
- When drafting, use already disturbed areas for stream access (road crossings, dispersed campsites) to reduce the need for riparian vegetation clearing.
- Use screens (3/32" inch) for all pumping operations.
- Use containment pads and basins under pumps and fuel cans. Ensure a spill kit is present with every operating pump.

### *Invasive Species*

- The fire is burning within an infestation of common crupina, a WA State Class A Noxious weed. Prevent spread of crupina off site – plan to wash hose and other equipment. Request fire fighters brush boots before boarding boat or before entering National Park Service Land.
- Inspect slings and remove all plant/soil material prior to use.
- Ensure all camps, staging areas, helispots and cargo areas are free of invasive plants to prevent spread to un-infested areas.
- Weed wash all vehicles, including boats, when they arrive to the incident and when demobed.

#### *Fisheries /Aquatic Recommendations*

- If trees must be felled in riparian areas for suppression or safety reasons, fell them toward streams where possible and minimize bucking where possible.
- Non-mechanized suppression activities are recommended within Riparian Reserves (150-300 ft from stream channel). For example, consider hand lines instead of dozer lines when feasible.

#### *Retardant Use*

- Retardant avoidance areas are present in the fire suppression area for both aquatic and terrestrial species.
- Track all retardant drops – locations and amounts.
- Report all mis-applications ASAP to READ. Monitoring and reporting of misapplications is required.

#### *Wet Meadows*

- No line or other disturbance in wet meadows in the Summer Blossom area (east of South Navarre campground above and below the 8200 road) and at Coyote and Poison Springs at the headwaters of their respective creeks.

#### *Dry Meadows*

- Minimize disturbance from staging and parking areas in dry meadows. These areas recovery slowly and are vulnerable to invasive plant infestation.

#### *White Bark Pine*

- Avoid cutting white bark pine whenever possible. Needles of 5 keep it alive! Ask READ for help with ID.

#### *Burnout operations*

- Plan to protect whitebark pine of all ages and mature cold and moist forest during burnouts. READ consultation and line officer approval is required for burn plans that include these forest types.
- During burnouts modify firing to retain large trees, large snags and large down wood in forests whenever possible.
- Minimize total acres burned in burnouts.
- Incorporate typical resource protection measures used in RX burning whenever it is safe and practical to do so (such as retention of green islands in moist areas).
- Provide a map of areas that were burned as part of the burnout operation (for use in emergency consultation).
- If cultural resources are discovered during suppression activities, leave on site and notify READ.

# PIONEER US-WA-SES-000173

## Demob List for Thursday 7/18/2024

OVERHEAD			
O-353	1700	SOFC	BORDELON, PHILIP
O-413	0700	DIVS	CLEAVE, SCOTT
O-525	1700	SOFC	RANDALL, TRAVIS
E-279	0800	ENG	LATE SUMMERS

## Demob List for Friday 7/19/2024

CREWS	EOS = END OF SHIFT		
C-30	EOS	CRW1	ENTIAT IHC
C-31	EOS	CRW1	LA GRANDE IHC
C-32	EOS	CR2I	PATRICK ENVIRONMENTAL 10A
C-35	EOS	CRW1	UNION IHC
OVERHEAD			
O-263	0730	TFLD	PEDERSEN, AARON
O-370	0800	ARCH	EATON, HENRY PARKER
O-376	0800	REAF	CHRISTOPHERSEN, ROGER
O-383	0800	EMPF	BYLSKI, ANTHONY ALAN
O-466	0900	LSC2	MCGINLEY, BRIAN

## Demob List for Saturday 7/20/2024

EQUIPMENT			
E-121	0900	TBOT	BRINNON FIRE BOAT - JEFFERSON CO FD7
E-217	0800	TRLR	NW 12 PLANS TRAILER #1 - 73948C - 93-107559
OVERHEAD			
O-273	0800	MEDL	VAN KIRK, LONDA DAWN
O-276	0800	HECM	JUBAN, REYNALDO YBANEZ
O-287	0730	SEC1	JOHNSON, NEIL
O-292	0730	HECM	BONE, CLIFFORD E
O-323	1500	FDUL	BALES, STEVEN
O-328	0830	FFT2	ROLLINS, JADE
O-329	0830	FFT2	DOLAN, CHRISTOPHER
O-389	0900	COMT	MILLS, DAKOTA
O-418	0830	FACL	DREYER, JOHN EDWARD

**Be sure to use the most current IAP QR Code  
Any questions call Demob at 509-661-5376**

## **Check In Message**

- Please complete the virtual check-in process via the QR code on the front cover.
- You are not checked in until you provide the following:
  - 1) Red Cards
  - 2) Roster/Manifest
- Please email documents to: [2024.pioneer.checkin@firenet.gov](mailto:2024.pioneer.checkin@firenet.gov)

Any Questions:

Phone: 509-661-5372

Email: [2024.pioneer.checkin@firenet.gov](mailto:2024.pioneer.checkin@firenet.gov)

---

## **Demob Message**

- Fliers complete the “Air Travel Request” via the QR code on the front cover 72 hours prior to flight date.
- Return supplies to the Cache.
- Return radios, antennas, etc., to Communications.
- All contract equipment and vehicles driven in fire area will need to do weed wash.
- Contact Finance about closing out your paperwork.
- Once the above items have been completed, SCAN the QR code on the front cover and complete the demob questions.

Any Questions:

Phone: 509-661-5376

Email: [2024.pioneer.demob@firenet.gov](mailto:2024.pioneer.demob@firenet.gov)



## HUMAN RESOURCES MESSAGE PIONEER FIRE

**July 18, 2024**

How are our attitudes towards each other?

The main difference between attitude and behavior is that behavior is the reflection of one's attitude towards something or someone.

Our behavior depends on various factors, and among them, attitude plays a major role. We may have different attitudes on the same topic, which makes us different from one another, and that's ok.

With all the hard work we are doing, it is easy to get on edge and "on the edge" with each other. Let us guard against that and try to help each other out. Make the decision today to protect yourself and co-workers by keeping your attitude in check.

Take care and be safe!

Thought of the day: We have to be cautious, we can't let negativity spread like wildfire.

Margaret Dietrich - Human Resource Specialist 360-701-3154

Union Representation Local 34, Katijo Maher  
360-677-2414 [Katijo.Maher@usda.gov](mailto:Katijo.Maher@usda.gov)





# Finance Message



Scan this QR code to submit documents to finance.



SUBJECT: *Include Key Word **TIME** for Overhead, Crews & Cooperators*

SUBJECT: *Include Key Word **EQUIPMENT** for Contract Resources*

Phone: 484-501-1835

Finance Email: [2024.pioneer.finance@firenet.gov](mailto:2024.pioneer.finance@firenet.gov)

**Please submit the below listed documents to the finance for Check-in, Daily processing and Demob.**

Overhead, Crews & Cooperator Resources	Contract Resources
<ul style="list-style-type: none"> <li>• <b>Check-In:</b> Crew Manifest, Cooperative Agreement (if applicable), AD Hire Letter, Resource Order</li> <li>• <b>Daily:</b> Crew Time Report (CTR), Shift Tickets</li> <li>• <b>Demob:</b> Signed OF288, Final Equipment Use Invoice (Cooperator). If you don't have a way to sign you must come to finance.</li> </ul>	<ul style="list-style-type: none"> <li>• <b>Check-In:</b> Resource Order, Contract/VIPR Agreement (make sure you have your UEI), Pre-Inspection, Crew Manifest</li> <li>• <b>Daily:</b> Shift Tickets, receipts (fuel issues, claims, etc.)</li> <li>• <b>Demob:</b> Contractor Evaluations, Final Shift Tickets and receipt(s) for Addition/Deductions, Post-Inspection, Final Signed Invoices. If you don't have a way to sign you must come to finance</li> </ul>

## REMINDERS

- ★ PLEASE SHOW YOUR LUNCH BREAK
- ★ PLEASE USE MILITARY TIME (0001-2400)
- ★ WHEN CLAIMING HAZARD PAY YOU MUST INCLUDE THE SUPPRESSION ACTION BEING PERFORMED. THIS INCLUDES OPERATIONS WHICH DIRECTLY SUPPORT CONTROL OF FIRE (E.G., ACTIVITIES TO EXTINGUISH THE FIRE, FIREFIGHTING, GROUND SCOUTING, SPOT FIRE PATROLLING, SEARCH AND RESCUE OPERATIONS, AND BACKFIRING).
- ★ CTRS SHOULD BE NAMED AS: CTR\_RO#\_YYMMDD-DD (EX: CTR\_O235\_240605-07)
- ★ SHIFT TICKETS SHOULD BE NAMED AS: ST\_RO#\_YYMMDD-DD (EX: ST\_E5\_240624-27)
- ★ PLEASE MAKE SURE YOU SEE FINANCE AND MEDLS FOR MINOR INJURIES. AGENCY PEOPLE WILL NOT HAVE CLAIMS PAID IF THEY DON'T FOLLOW PROTOCOLS.
- ★ **FOR AN EXPEDIANT DEMOBING PROCESS PLEASE MAKE SURE YOU HAVE NO OUTSTANDING CLAIMS, ALL TIME AND REQUIRED CHECK IN DOCUMENTS HAVE BEEN SUBMITTED BEFORE YOU COME TO FINANCE TO CHECK-OUT.**

# PIONEER FIRE LOGISTICS MESSAGE

	ICP @ MANSON	LUCERNE FOB
Kitchen	Breakfast 0530-0830 Dinner 1730-2100	Breakfast 0600-0900 Dinner 2030-2130
Lunch/Water/Ice	0500-2100	Pick up with breakfast
Shower	0500-1200 1400-2200	0500-1200 1400-2200
Adventure Medic Trailer	0530-2200	
Laundry	0500-2200	
Supply	0600-2200	0600-2200
Ordering	0600-2200	
Fuel Tender	0600-2030	
Ground Support	0600-2200	
Weed Wash	0700-1400 1600-2000	

**Note:** For resources traveling up-lake, there is no cell service in many areas. It is recommended that you set up WiFi calling on your phone prior to leaving cell service.

## CONTACT INFORMATION

UNIT	EMAIL	PHONE
Communications	(none)	(208) 891-8093
Finance	2024.pioneer.finance@firenet.gov	(484) 501-1835
Ordering	2024.pioneer.ordering@firenet.gov	(484) 501-1821
Ground Support	(none)	Dave (509) 688-7144 Tom (360) 520-5232
Check-In	2024.pioneer.checkin@firenet.gov	(509) 661-5372
Demob	2024.pioneer.demob@firenet.gov	(509) 661-5376
Situation	2024.pioneer.situation@firenet.gov	
Resources	2024.pioneer.resources@firenet.gov	
Planning	2024.pioneer.plans@firenet.gov	
Documentation	2024.pioneer.docs@firenet.gov	



Team 12 Line Supply Order			Order#		
Deliver To Location/Time (Division/Drop Point,			Deliver Method Driver, Helo, DIVS, pick up		
Date & Time Order Placed			Delivery Method (Driver/Helo/DIVS)		
Order received in Communications by (name & time)			Ordered by (name & position)		
Order received in Supply by (name & time)			Ground Contact Person		
Order received in Ground Support by (name & time)			Contact Frequency		
Order received in Helibase by (name & time)			Special Instructions		
Order shipped to line by (name & time)					
#	Item	Amount	#	Item	Amount
1	Meals #1842 MRE 12/cs		33	Bath in a Bag, Large #0712	
2	Water #0048 5 gal cubies		34	Bath in a Bag, Small #0206	
3	Gatorade 24/cs		35	Coffe Kit #0480	
4	Batteries, AA #0030 24/pg		36	Coffee 3lb Can	
5	Batteries, AAA #7471 24/pg		37	Folding Tank 1500 gal #0664	
6	Gas Unleaded #0607 5 gallon		38	Pumpkin 3000 gal #0568	
7	Diesel #0607 5 gallon		39	Backpack Pump #0909	
8	2 Cycle Oil # 7724 5 gal mix/Mark3		40	Mark III Pump + Kit #0148	
9	2 Cycle Oil # 3444 1 gal mix		41	Lightweight Pump + Kit #8606	
10	Bar Oil #1880 1 gallon		42	Volume Pump + Kit #1222	
11	Bar Oil #1869 1 quart		43	Hose - 1 1/2" #1239 100' LG	
12	Shovel #0171		44	Hose - 1" #1238 100' LG	
13	Pulaski #0146		45	Hose - 3/4" #1016 50' LG	
14	Mcleod #0296		46	Reducer - 1 1/2" to 1" #0010	
15	Combi #1180		47	Reducer - 1" to 3/4" #0733	
16	Chainsaw Kit #0340		48	Gated "Y" - 1 1/2" #0231	
17	Drip Torch (empty) #0241		49	Gated "Y" - 1" #0259	
18	Fussee #0105		50	Gated "Y" - 3/4" #0904	
19	Sleeping Pad #1566		51	In-line Tee - 1 1/2" #0230	
20	Sleeping Bag #0022		52	Nozzle KK - 1 1/2" #1082	
21	Fly Tent #0070		53	Nozzle KK - 1" #1081	
22	Plastic Sheeting #0143		54	Nozzle - 3/4" #0136	
23	Parachute Cord #0533		55	Nozzle - Forester - 1" #0024	
24	Fiber Tape #0222		56	Sprinkler Kit #1048	
25	Garbage Bags #0021		57		
26	Leadline 3000lb #0528		58		
27	Cargo Net 3000lb #0531		59		
28	Swivel 3000lb #0526		60	Team 12 Hose Lay Kit	
29	Slingable Bag 72 Gal Blivet #0426		61		
30	Foam 5 gal #1145		62		
31	Toilet Paper #0142		63		
32			64		



Team 12 Hose Lay Kit	
Item	Amount
1 1/2 in. synthetic hose	1000 ft.
1 in. synthetic hose	500 ft.
3/4 in. garden (toy) hose	500 ft.
1 1/2 in. gated wye	5EA
1 1/2 - 1 in. reducer	5EA
1 in. combination nozzle	5EA
1 in. - 3/4 in. reducer	5EA
3/4 in. valve, shutoff, ball	5EA
3/4 in. nozzle	5EA
3/4 in. gated wye	5EA

SPRINKLER KIT NFES# 1048	
Item	Amount
Sprinkler head w/ couplings	4EA
3/4 in. garden (toy) hose	250 ft
1 1/2 in. x 1 1/2 in. x 1 in. tee	4EA
1 in. - 3/4 in. reducer	4EA
1 1/2 in. - 1 in. reducer	1EA
3/4 in. gated wye	2EA
3/4 in. valve, shutoff, ball	4EA
3/4 in. nozzle	1EA
3/4 in. pressure regulator	4EA
3/4 in. nozzle, plastic 60 GPM	1EA
10 in. adjustable wrench	1EA

LINE ORDER PROCESS: Line orders from the field should go through the Communications Unit via radio (primary) or 24-hour phone number (208) 891-8093. All other supply requests should be submitted in person to the Supply Unit.

## BOAT DIVISION INFORMATION

Transportation for supplies and personal up and down lake Chelan  
**For significant supply or equipment transportation it is preferred requests arrive 48 hours in advance**

\*\* PLEASE USE THE TEMPLATE BELOW TO REQUEST BOAT TRANSPORTATION \*\*

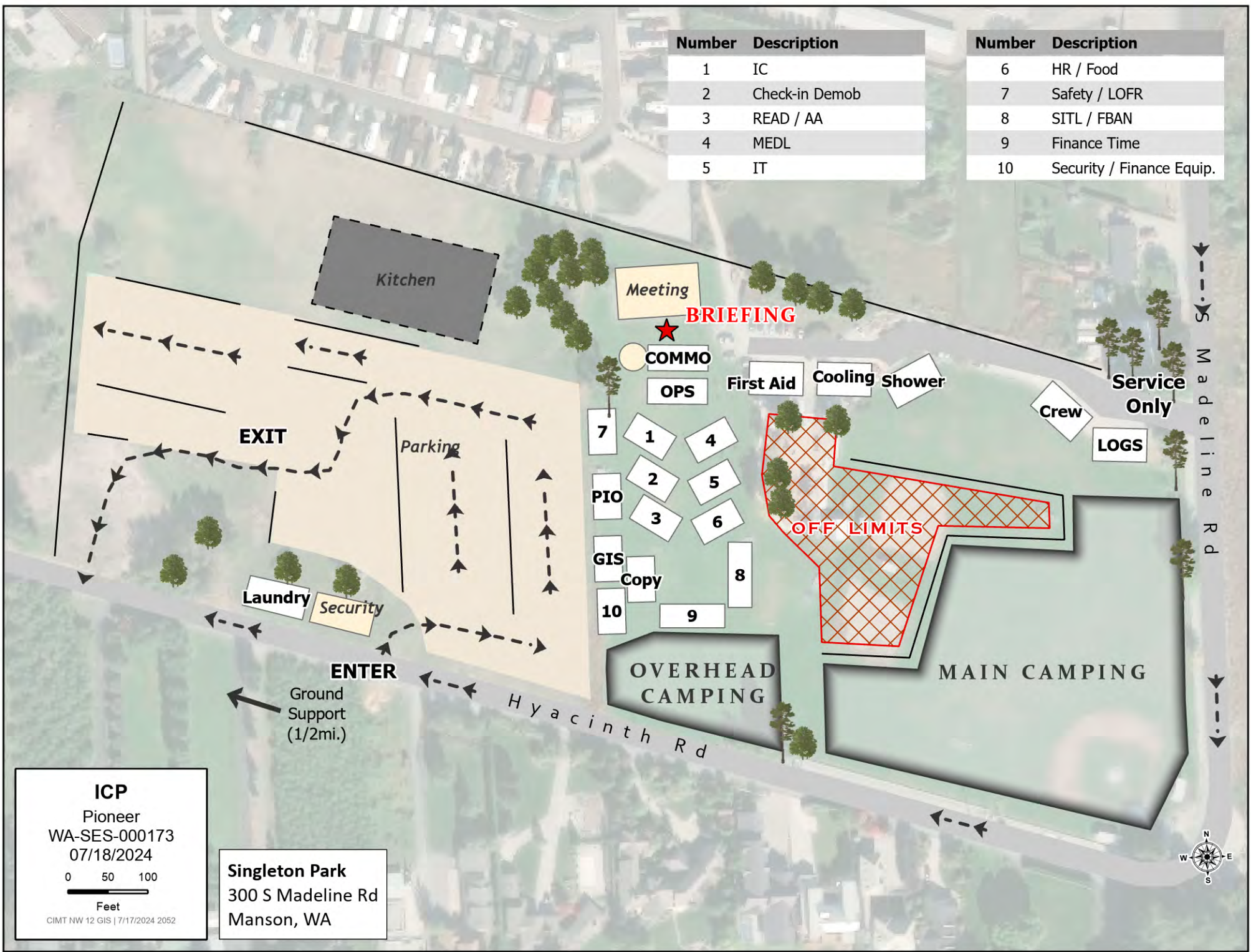
Boat Group Contact Information:  
 Sam Steinshouer, DIVS, (509) 675-5008 or [sam.steinshouer@dnr.wa.gov](mailto:sam.steinshouer@dnr.wa.gov)  
 Tosten Kulaas, DIVS (T), (509) 699-6387 or [tkulaas@blm.gov](mailto:tkulaas@blm.gov)

<b>GENERAL MESSAGE (ICS 213) - Fire name: Pioneer</b>		
1. <b>TO:</b> Sam Steinshouer, DIVS / Tosten Kulaas DIVS (T)		
2. <b>FROM:</b> (Name and Position)		
3. <b>Subject:</b> Boat Transportation	<b>DATE:</b>	<b>TIME:</b>
4. <b>Message:</b>		
O# E# or C# _____		
Departure Date _____		
Departure Location (Chelan / Fields Pt. / Lucerne / Stehekin) _____		
Arrival Location (Chelan / Fields Pt. / Lucerne / Stehekin) _____		
Email Address for Confirmation _____		
** If unable to receive email, please note and tickets will be email to either your supervisor or Boat Coordinator		
Phone Number _____		
FERRY TICKETS NEED TO BE SUBMITTED TO BOAT DIVS BY 1600 THE DAY PRIOR TO DESIRED DEPARTURE		
SIGNATURE:		POSITION:

Request #	Description	Capacity (# people)	Night Operations
E-1	TBOT WA-NCP	5	
E-3	TBOT CHELAN CO F&R #7	6	YES
E-12	TBOT CHELAN RANGER DISTRICT	8-10	
E-43	TBOT LK CHELAN LLAMAS & UPTAKE ADVENTURES	8-10	
E-91	TBOT DNR MUD PUPPY	8	YES
E-98	TBOT CHELAN COUNTY SHERIFF	12	
E-120	TBOT PILGRIM LAKE SERVICES	5	
E-121	TBOT BRINNON FIRE	6	YES
E-201	TBOT SEA FALCON	6	
E-202	TBOT RIVER RUNNER	6	YES
E-295	TBOT PUGET PROTECTOR	18-20+	YES
E-296	TBOT FRV #9	16-18	YES
E-297	TBOT PIONEER PROTECTOR	18-20+	

Number	Description
1	IC
2	Check-in Demob
3	READ / AA
4	MEDL
5	IT

Number	Description
6	HR / Food
7	Safety / LOFR
8	SITL / FBAN
9	Finance Time
10	Security / Finance Equip.



**ICP**  
 Pioneer  
 WA-SES-000173  
 07/18/2024  
 0 50 100  
 Feet  
 CIMT NW 12 GIS | 7/17/2024 2052

**Singleton Park**  
 300 S Madeline Rd  
 Manson, WA



S Q u e t i l q u a s o o n R d

EXIT

Fuel

Order

Supply

ICE

NAVY

Lunch

Parking

Drivers

ENTER

ICP  
(1/2mi.)

SLEEPING

SLEEPING

GSUL

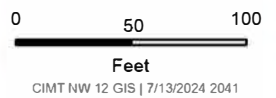
SLEEPING

HW

**Ground Support**

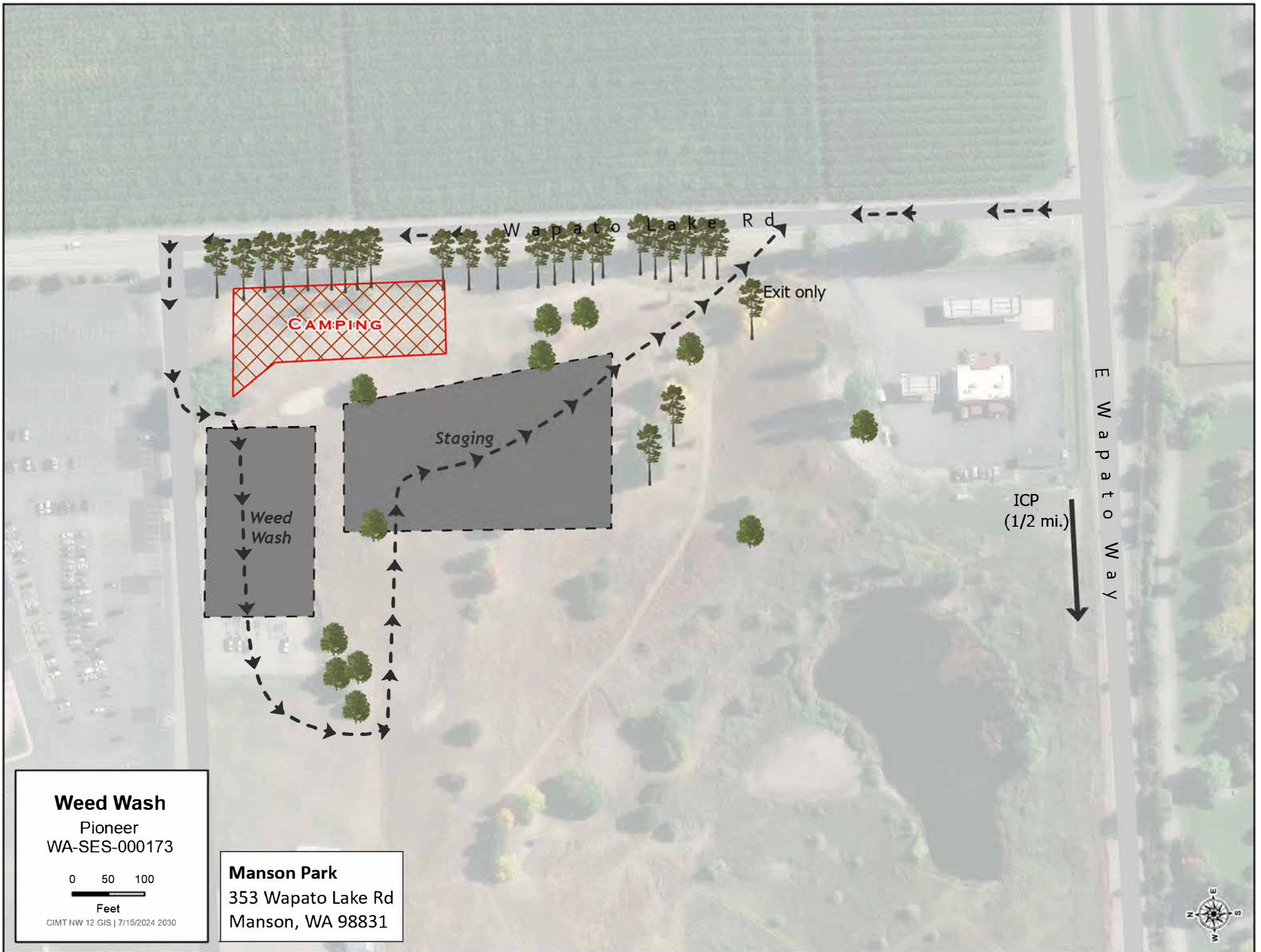
Pioneer

WA-SES-000173



CIMT NW 12 GIS | 7/13/2024 2041

**a.k.a. Quentin Tarantino Village**  
196 S Quetilquasoon Rd  
Manson, WA



# Fields Point Parking

Pioneer

WA-SES-000173

07/18/2024

0 50 100  
US Feet



Fields  
Point Rd

Lake  
Shore Rd

Parking



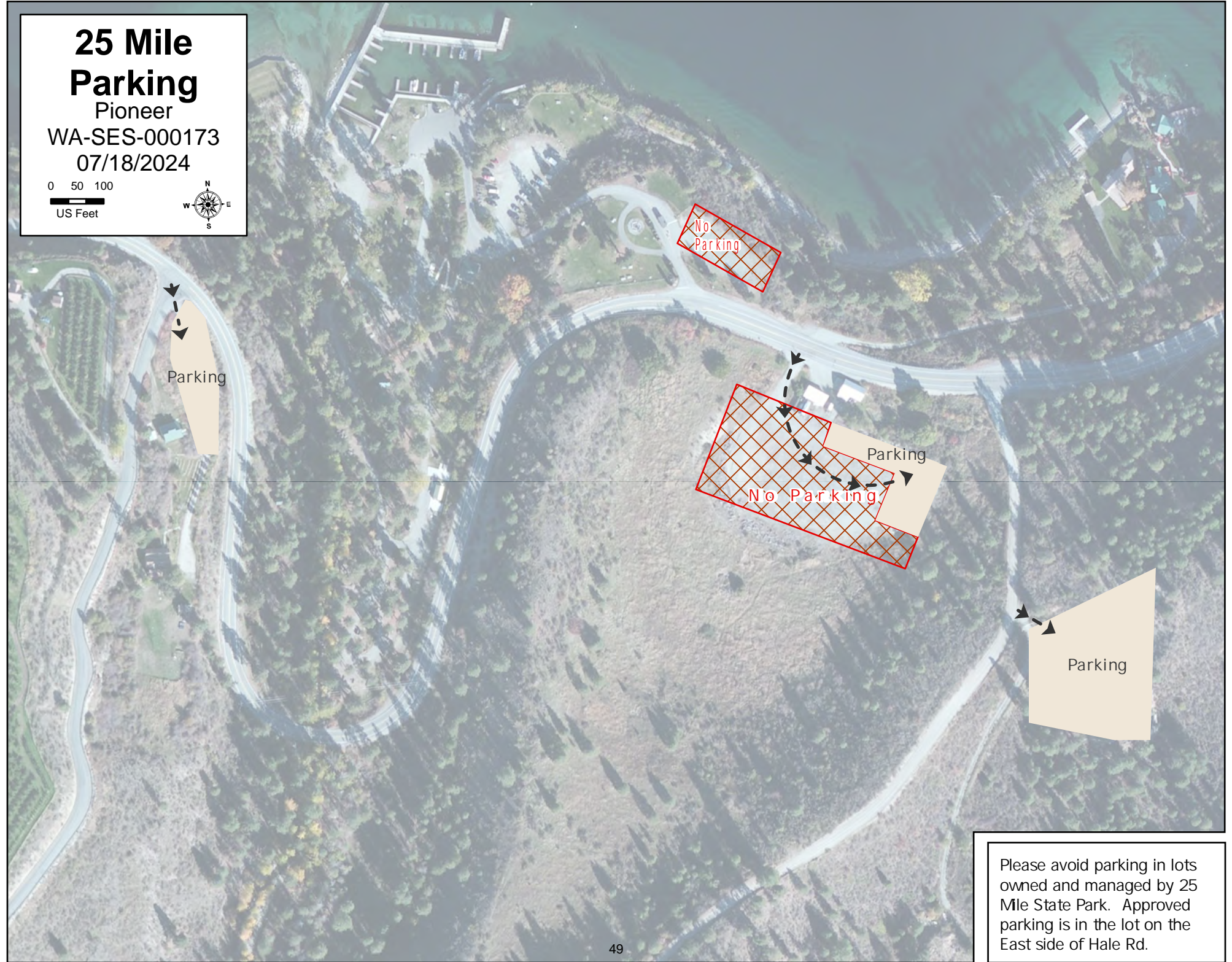
# 25 Mile Parking

Pioneer

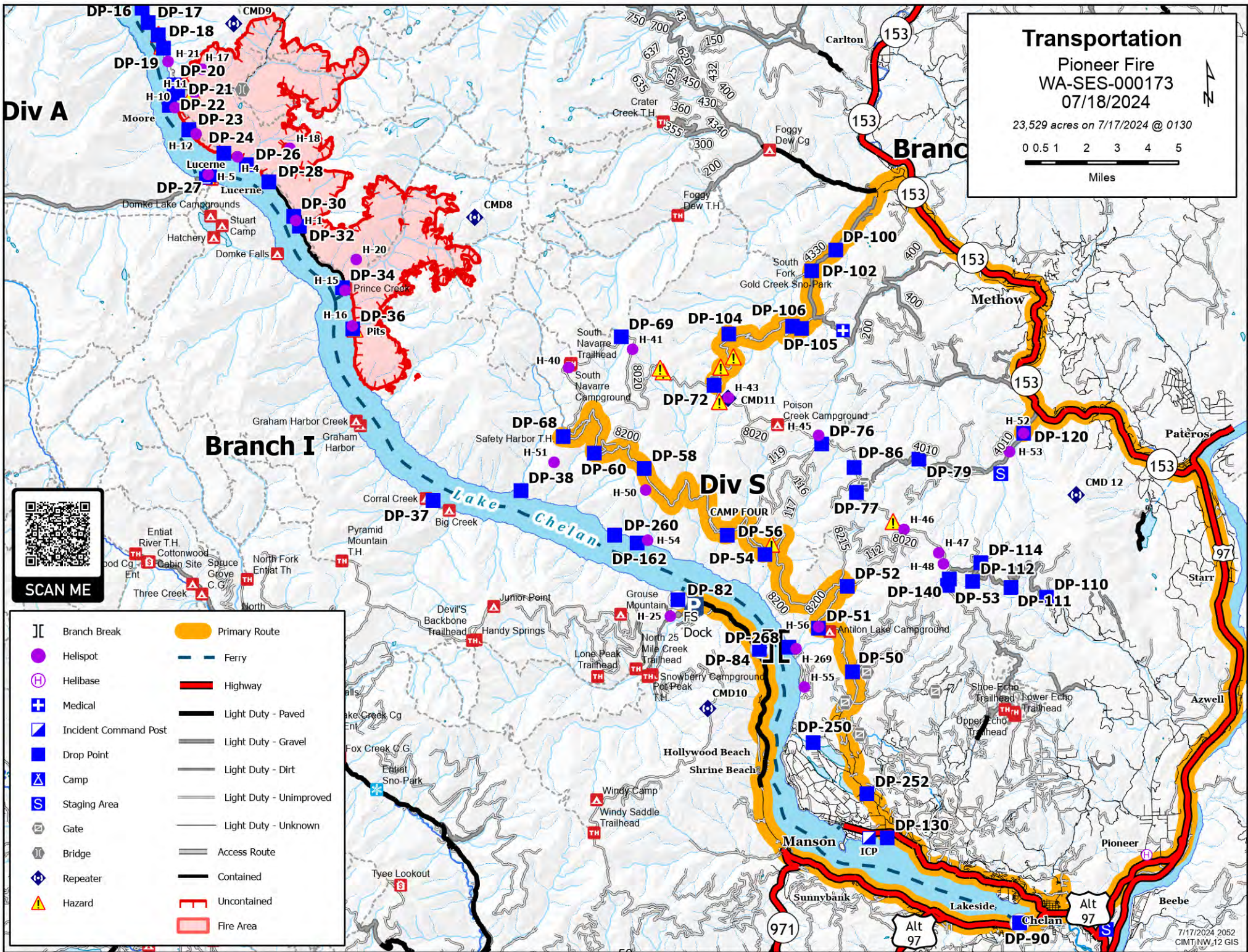
WA-SES-000173

07/18/2024

0 50 100  
US Feet



Please avoid parking in lots owned and managed by 25 Mile State Park. Approved parking is in the lot on the East side of Hale Rd.



**Transportation**  
 Pioneer Fire  
 WA-SES-000173  
 07/18/2024  
 23,529 acres on 7/17/2024 @ 0130  
 0 0.5 1 2 3 4 5  
 Miles



- |               |                       |                    |                         |
|---------------|-----------------------|--------------------|-------------------------|
| [ ]           | Branch Break          | [Orange Line]      | Primary Route           |
| [Purple Dot]  | Helispot              | [Blue Dashed Line] | Ferry                   |
| [H in Circle] | Helibase              | [Red Line]         | Highway                 |
| [Blue Cross]  | Medical               | [Black Line]       | Light Duty - Paved      |
| [Blue Square] | Incident Command Post | [Grey Line]        | Light Duty - Gravel     |
| [Blue Square] | Drop Point            | [Grey Line]        | Light Duty - Dirt       |
| [Blue X]      | Camp                  | [Grey Line]        | Light Duty - Unimproved |
| [S in Circle] | Staging Area          | [Grey Line]        | Light Duty - Unknown    |
| [Gate Icon]   | Gate                  | [Grey Line]        | Access Route            |
| [Bridge Icon] | Bridge                | [Black Line]       | Contained               |
| [Diamond]     | Repeater              | [Red Line]         | Uncontained             |
| [Triangle]    | Hazard                | [Red Area]         | Fire Area               |





## **Pioneer Fire-Manson ICP**

### **In Camp Medical Procedure**

#### **If Red or Yellow**

Yell for help and stay with patient

Provide first aid as appropriate

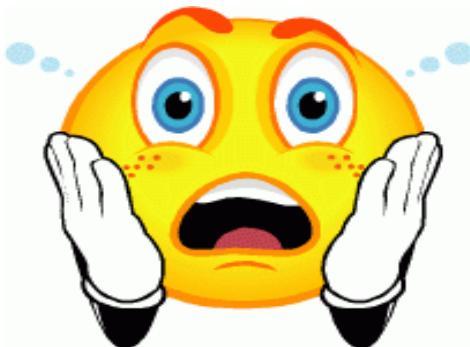
Call 911

Contact Pioneer communications at **208-891-8093** or by radio

#### **If Green**

Go to Adventure Medical Trailer for evaluation and treatment

(Near playground)



# Public Information

**PHOTOS:** Your fireline photos help us build understanding with the public. We are looking for any pictures of the fire line and **fire resources working on the fire line in their PPE**. You can send photos to: Email: [2024.pioneer@firenet.gov](mailto:2024.pioneer@firenet.gov); Text: 509-388-1475

As always, make sure all PPE is worn.

**PERSONAL SOCIAL MEDIA:** When unprofessional or unsafe activities are posted, it reflects poorly on the entire fire and aviation community and has a shelf life of years. Nothing is private and no one benefits when the fire service is perceived as unprofessional. For more information, see: [https://www.nifc.gov/sites/default/files/pio/documents/photo\\_video\\_NIFC.pdf](https://www.nifc.gov/sites/default/files/pio/documents/photo_video_NIFC.pdf)

**LOST AND FOUND:** We have a few items in the information trailer. If you have lost something, stop by and see if it has been turned in. If you find something left behind, you can turn it in to us.

**MAIL:** Public Information Officers will help facilitate mail. If you need to receive mail while at this incident, you can pick it up at the PIO trailer. Please use this format and address:

Name and resource order number  
Pioneer Fire  
300 Madeline Ave  
Manson, WA 98831

**QUESTIONS FROM THE PUBLIC:** If community members have questions that you do not feel equipped to answer professionally, please give them our fire information line: 541-861-5808. The public may access information by scanning this QR code.





# EMERGENCY PLAN INCIDENT WITHIN AN INCIDENT

## ON SCENE INCIDENT COMMANDER

In the event of an accident or medical incident of any size, your primary responsibility is to ENSURE that the victim(s) receive prompt and effective Triage, Treatment, Extrication and Transport.

- **ENSURE THE MEDICAL INCIDENT REPORT IN THE INCIDENT ACTION PLAN IS BEING USED AND FOLLOWED- \*IF DETERMINED TO BE A GREEN, DO NOT DECLARE EMERGENCY TRAFFIC AND ONLY COMPLETE LINE 1-4 ON MIR\*.**
- Conduct size-up of the incident nature of accident, number type of resources involved, latitude and longitude location (DD°MMM.MM format): notify incident communications center and supervisor, request assistance as needed.
- Order and coordinate medical and support response to the accident.
- Evaluate special needs (law enforcement, haz mat, etc.).
- Clear the command frequency if medical emergency, coordinate with incident communications and air attack for air medical transportation needs.
- Preserve and photograph the scene for accident investigation.
- Remain aware of surroundings and the status of the main incident (delegate personnel to monitor the main fire) to ensure safety of medical treatment personnel.
- Until relieved, supervise and manage all personnel involved at the incident scene.

# MEDICAL PLAN (206 WF)

1. Incident/Project Name			2. Operational Period					
Pioneer Fire			Date/Time: 07/18/24 0700-2100					
3. Ambulance Services								
Name	Complete Address	Phone	Advanced Life Support (ALS)					
			Yes	No				
Lake Chelan EMS	Chelan, WA	911	X					
Douglas/Okanagan County Fire	Brewster, WA	911		X				
4. Air Ambulance Services								
Name	Phone/Channel	Frequency, Type of Aircraft & Capability						
Life Flight - Brewster	1-800-232-0911 911	VMED 29, Rotor, ALS, 24 hr						
Airlift NW - Wenatchee	1-800-426-2430 911	VMED 29, Rotor, ALS, 24 hr						
Medivac Ship	Command 7,8,9,10,11,12 (Linked)	VMED 29, Rotor, BLS, Daytime 971-762-8575 pioneer helibase 47 51.96N 119 55.56W						
Mount Rainer Short Haul	Command 7,8,9,10,11,12 (Linked)	VMED 29, Rotor, BLS, Daytime, Short Haul						
Snohawk 10 - Snohomish	1-800-258-5990 911	VMED 29, Rotor, ALS, Daytime, Hoist						
Spokane County Hoist - Spokane	1-509-532-8930 911	VMED 29, Rotor, ALS, 24 hr, Hoist Daytime Only						
5. Hospitals								
Name	Degrees Decimal Minutes	Travel Time From Fire		Phone	Helipad Yes No		Level of Care	
Lake Chelan Health 110 S. Apple Blossom Drive Chelan WA	Lat: 47° 50' 20 N	30 Min	3 Hr	509-683-2474	X		Level IV Trauma	
	Long: 119° 59' 20 W							
Central Washington Hospital (Confluence Health Central Campus) 1201 S. Miller Wenatchee WA	Lat: 47° 24. 43 N	30 Min	4 Hr	509-433-3115	X		Level III Trauma	
	Long: 120° 19. 28 W							
Harborview Medical Center 325 9 <sup>th</sup> Ave Seattle WA	Lat: 47° 36. 24 N	1.5 Hr	6 Hr	206-744-4025	X		Level I Trauma Burn Center	
	Long: 122° 19. 45 W							
<b>ICP</b>	<b>EMS Responders &amp; Capability:</b>		Diana Braun MEDL/EMTF 509-348-0091		Ben Elkind MEDL(T)/EMTF 503-201-2495		Morgan De Marco RN / EMTF / MED TRAILER 973-735-3577	
			Jarren Bennett EMTF/ MED TRAILER 320-390-2282					
	Equipment Available on Scene:		AED, BLS Kit, OTC Meds, Rx Meds, Urgent Care Facility					
	Medical Emergency Channel:		Command 7, 8, 9, 10, 11 (Linked)					
	ETA for Ambulance to Scene:							
	Air:		NA					
	Ground:		15 Min					
	Approved Heli-Spot:		NA					
	Lat:		NA					
Long:		NA						
<b>LUCERNE FOB</b>	<b>EMS Responders &amp; Capability:</b>		Londa Van Kirk MEDL/EMTF (Lucerne FOB) 360-815-7645		MEDIC 6 Steve Medina (Air/Boat Medical) 360-556-9568			
	Equipment Available on Scene:		ALS Kit, AED, O2, OTC meds					
	Medical Emergency Channel:		Command 7, 8, 9, 10, 11 (Linked)					
	ETA for Ambulance to Scene:							
	Air:		2 hr					
	Water/Ground:		3 hr					
	Approved Heli-Spot:							
	Lat:		<b>H5 48° 12.1624' N</b>					
Long:		<b>120° 35.4476' W</b>						

## MEDICAL PLAN (206 WF)

<b>BRANCH I/II DIV A</b>	<b>EMS Responders &amp; Capability:</b>	<b>MEDIC 1 Christopher Jackson (DIV A)</b> 334-707-1468 <b>MEDIC 12 Ethan Biederman (DIV A)</b> 513-882-2837 <b>MEDIC 2 Michael Poe (DIV A)</b> 580-695-9363 <b>MEDIC 3 Gary Lebacken (DIV A)</b> 509-431-4179	
	Equipment Available on Scene:	ALS Kit, Monitor/Defib, O2	
	Medical Emergency Channel:	Command 7, 8, 9,10, 11 (Linked)	
	ETA for Ambulance to Scene:		
	Air:	2 hr	
	Water/Ground:	3 hr	
	Approved Heli-Spots:		
	<b>H1 48° 10.813' N</b> <b>120° 31.925' W</b>	<b>H11 48° 14.492' N</b> <b>120° 35.922' W</b>	<b>H15 48° 08.754' N</b> <b>120° 29.813' W</b>
	<b>H10 48° 14.099' N</b> <b>120° 36.782' W</b>	<b>H12 48° 13.381' N</b> <b>120° 35.919' W</b>	<b>H16 48° 07.744' N</b> <b>120° 29.541' W</b>
	Lat:	NA	
	Long:	NA	

<b>BRANCH I/II Stehekin DIV D</b>	<b>EMS Responders &amp; Capability:</b>	<b>Paul Smith MEDL/EMTF (Stehekin FOB)</b> 541-480-9645 <b>MEDIC 15 Robert Ruzala (DIV D)</b> 253-905 4304 <b>MEDIC 14 Laura Krause (Div D)</b> 360-880-3414 <b>EMT 1 Travis Braddock (DIV D)</b> 253-278-1326
	Equipment Available on Scene:	ALS Kit, Monitor/Defib, O2
	Medical Emergency Channel:	Command 7, 8, 9, 10, 11 (Linked)
	ETA for Ambulance to Scene:	
	Air:	2 hr
	Ground:	3 hr
	Approved Heli-Spot:	
	Lat:	<b>H14 48° 20.760' N</b>
	Long:	<b>120° 43.242' W</b>

<b>BRANCH IV DIV S Contingency Roads Structure/IA</b>	<b>EMS Responders &amp; Capability:</b>	<b>AMBO 2 Kody Hurd+1 (CONTINGENCY)</b> 509-768-5519 <b>MEDIC 13 Anthony Bylski (CONTINGENCY)</b> 248-752-5511 <b>MEDIC 19 Chase Laubach (CONTINGENCY)</b> 406-788-8450 <b>MEDIC 7 Joshua Gray (CONTINGENCY)</b> 615-499-8461 <b>REMS 3 Ron Pearsall +3 (CONTINGENCY)</b> 360-791-6896 <b>AMBO 3 Lev Babich +1 (CONTINGENCY)</b> 650-868-2803 <b>RAT 1 Claire Garrett +1 (CONTINGENCY)</b> 313-952-4679 <b>MEDIC 11 Savannah McLaughlin (DIV S)</b> 435-590-4952 <b>REMS 1 Rick Bostain + 3 (DIV S)</b> 479-422-0462 <b>MEDIC 17 Trevor Leary (Structure/IA)</b> 724-991-5564 <b>MEDIC 16 Kelly Max (Structure/IA)</b> 520-508-4486 <b>MEDIC 18 Rick Kelly (ROADS)</b> 509-290-3922
	Equipment Available on Scene:	ALS Kit, Monitor/Defib, O2, Rescue Gear
	Medical Emergency Channel:	Command 7, 8, 9, 10, 11,12 (Linked)
	ETA for Ambulance to Scene:	
	Air:	2 hr
	Ground:	3 hr
	Approved Heli-Spot:	NA
	Lat:	NA
	Long:	NA

<b>TBD</b>	<b>EMS Responders &amp; Capability:</b>	
	Equipment Available on Scene:	
	Medical Emergency Channel:	
	ETA for Ambulance to Scene:	
	Air:	
	Ground:	
	Approved Heli-Spot:	
	Lat:	
Long:		

<b>Prepared By (Medical Unit Leader Trainee)</b>	<b>Date</b>	<b>Reviewed By (Safety Officer)</b>	<b>Date</b>
Ben Elkind	07/17/24	Taija Corso SOFC	07/17/24
Signature: Ben Elkind		Signature: Taija Corso	



# MEDICAL PLAN (ICS 206 WF)

Controlled Unclassified Information//Basic

## Medical Incident Report

**FOR A NON-EMERGENCY INCIDENT, WORK THROUGH CHAIN OF COMMAND TO REPORT AND TRANSPORT INJURED PERSONNEL AS NECESSARY.**

**FOR A MEDICAL EMERGENCY: IDENTIFY ON SCENE INCIDENT COMMANDER BY NAME AND POSITION AND ANNOUNCE "MEDICAL EMERGENCY" TO INITIATE RESPONSE FROM IMT COMMUNICATIONS/DISPATCH.**

Use the following items to communicate situation to communications/dispatch.

1. CONTACT COMMUNICATIONS / DISPATCH (**Verify correct frequency prior to starting report**)

*Ex: "Communications, Div. Alpha. Stand-by for Emergency Traffic."*

2. INCIDENT STATUS: *Provide incident summary (including number of patients) and command structure.*

*Ex: "Communications, I have a Red priority patient, unconscious, struck by a falling tree. Requesting air ambulance to Forest Road 1 at (Lat./Long.) This will be the Trout Meadow Medical, IC is TFLD Jones. EMT Smith is providing medical care."*

Severity of Emergency / Transport Priority	<input type="checkbox"/> RED / PRIORITY 1 Life or limb threatening injury or illness. Evacuation need is IMMEDIATE <i>Ex: Unconscious, difficulty breathing, bleeding severely, 2° – 3° burns more than 4 palm sizes, heat stroke, disoriented.</i> <input type="checkbox"/> YELLOW / PRIORITY 2 Serious Injury or illness. Evacuation may be DELAYED if necessary. <i>Ex: Significant trauma, unable to walk, 2° – 3° burns not more than 1-3 palm sizes.</i> <input type="checkbox"/> GREEN / PRIORITY 3 Minor Injury or illness. Non-Emergency transport <i>Ex: Sprains, strains, minor heat-related illness.</i>	
Nature of Injury or Illness & Mechanism of Injury		<i>Brief Summary of Injury or Illness (Ex: Unconscious, Struck by Falling Tree)</i>
Transport Request		<i>Air Ambulance / Short Haul/Hoist Ground Ambulance / Other</i>
Patient Location		<i>Descriptive Location &amp; Lat. / Long. (WGS84)</i>
Incident Name		<i>Geographic Name + "Medical" (Ex: Trout Meadow Medical)</i>
On-Scene Incident Commander		<i>Name of on-scene IC of Incident within an Incident (Ex: TFLD Jones)</i>
Patient Care		<i>Name of Care Provider (Ex: EMT Smith)</i>

3. INITIAL PATIENT ASSESSMENT: *Complete this section for each patient as applicable (start with the most severe patient)*

Patient Assessment: See IRPG page 106

Treatment:

4. TRANSPORT PLAN:

Evacuation Location (*if different*): (*Descriptive Location (drop point, intersection, etc.) or Lat. / Long.*) Patient's ETA to Evacuation Location:

Helispot / Extraction Site Size and Hazards:

5. ADDITIONAL RESOURCES / EQUIPMENT NEEDS:

*Example: Paramedic/EMT, Crews, Immobilization Devices, AED, Oxygen, Trauma Bag, IV/Fluid(s), Splints, Rope rescue, Wheeled litter, HAZMAT, Extrication*

6. COMMUNICATIONS: Identify State Air/Ground EMS Frequencies and Hospital Contacts as applicable

Function	Channel Name/Number	Receive (RX)	Tone/NAC *	Transmit (TX)	Tone/NAC *
COMMAND					
AIR-TO-GRND					
TACTICAL					

7. CONTINGENCY: **Considerations:** *If primary options fail, what actions can be implemented in conjunction with primary evacuation method? Be thinking ahead.*

8. ADDITIONAL INFORMATION: *Updates/Changes, etc.*

**REMEMBER:** Confirm ETA's of resources ordered. Act according to your level of training. Be Alert. Keep Calm. Think Clearly. Act Decisively.

Controlled Unclassified Information//Basic