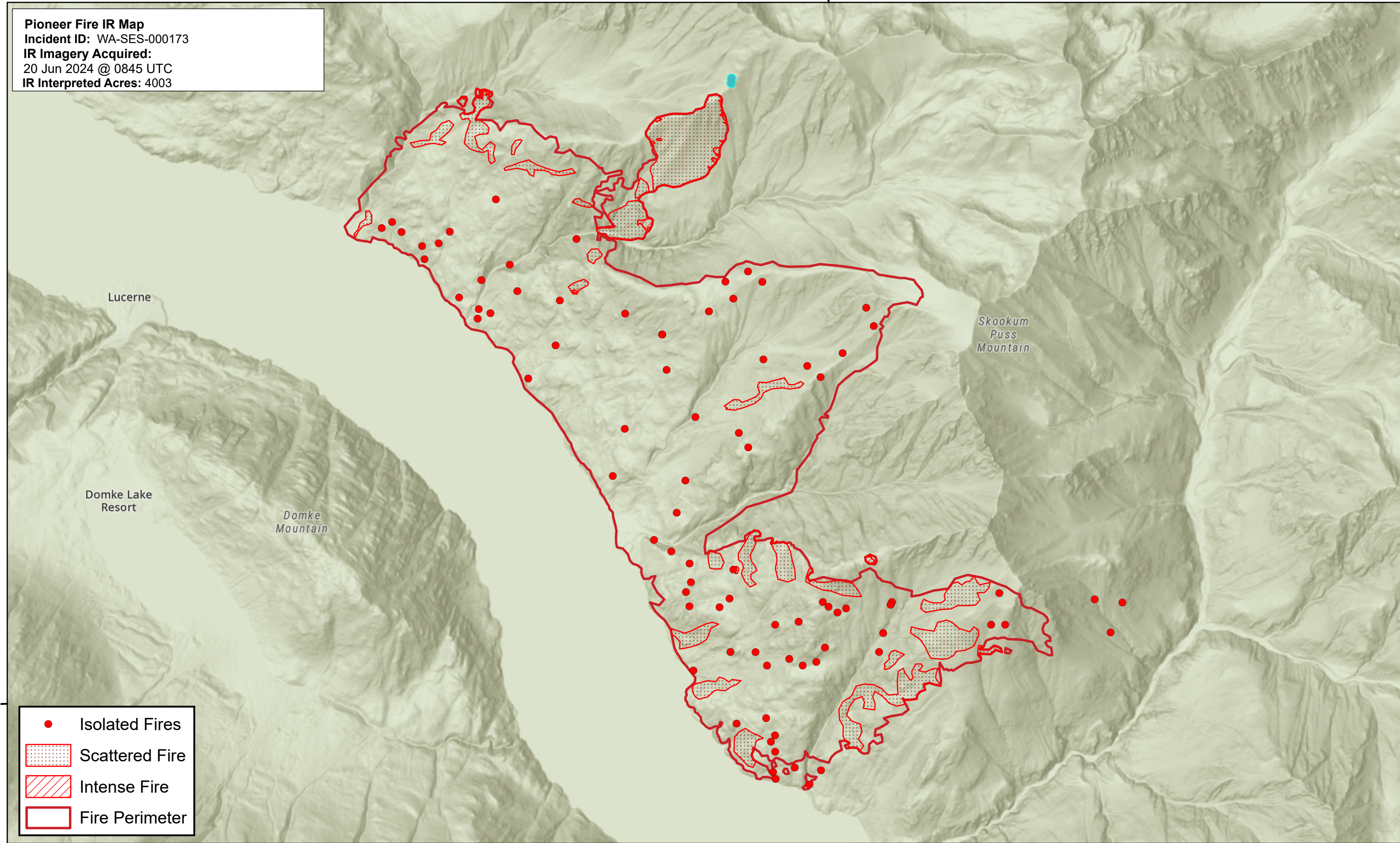


120°35'0"W

120°30'0"W

Pioneer Fire IR Map
Incident ID: WA-SES-000173
IR Imagery Acquired:
20 Jun 2024 @ 0845 UTC
IR Interpreted Acres: 4003



	Isolated Fires
	Scattered Fire
	Intense Fire
	Fire Perimeter

120°35'0"W

120°30'0"W

