

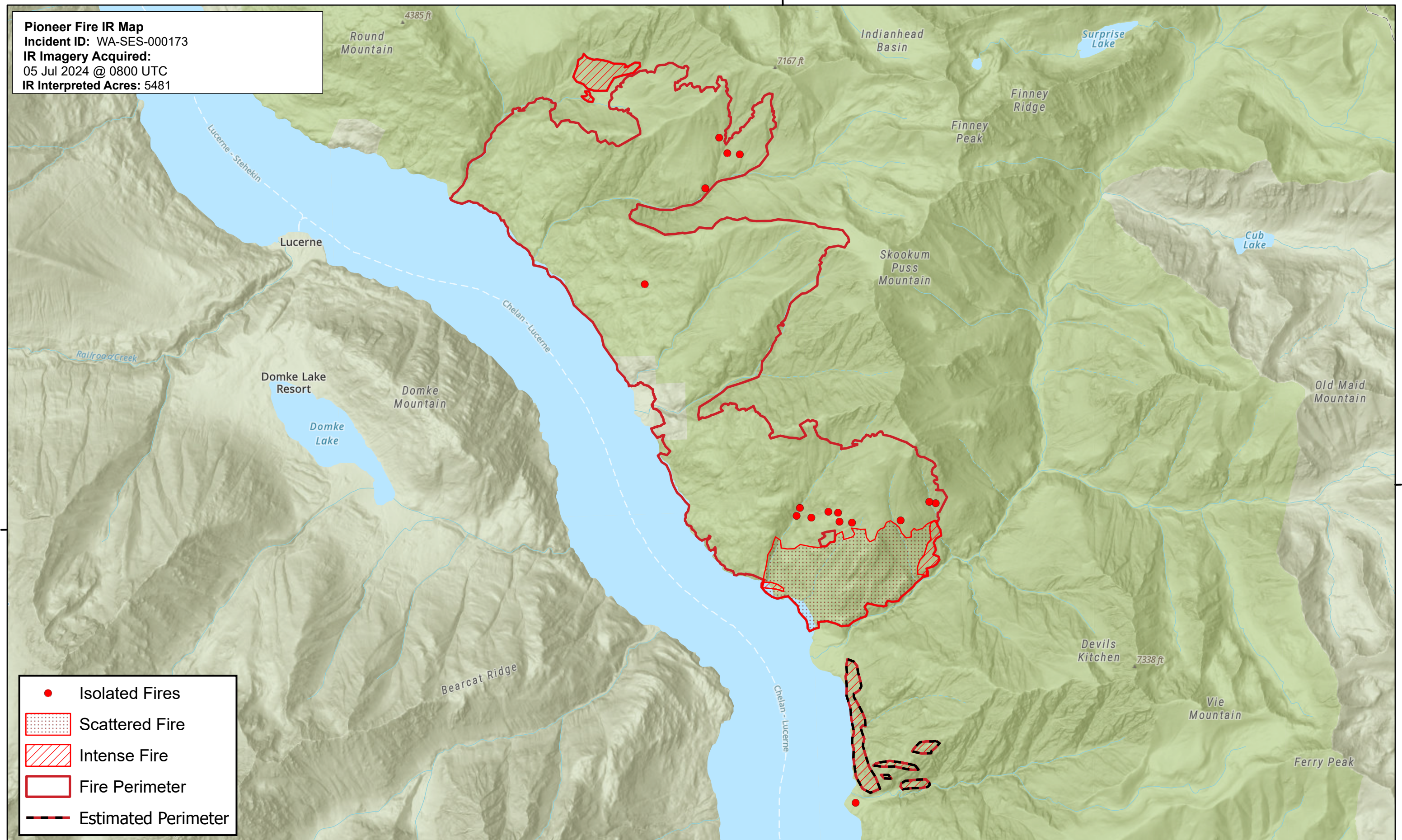


120°35'0"W

120°30'0"W

120°25'0"W

Pioneer Fire IR Map
 Incident ID: WA-SES-000173
 IR Imagery Acquired:
 05 Jul 2024 @ 0800 UTC
 IR Interpreted Acres: 5481



48°10'0"N

48°10'0"N

- Isolated Fires
- Scattered Fire
- Intense Fire
- Fire Perimeter
- Estimated Perimeter



120°35'0"W

120°30'0"W

120°25'0"W