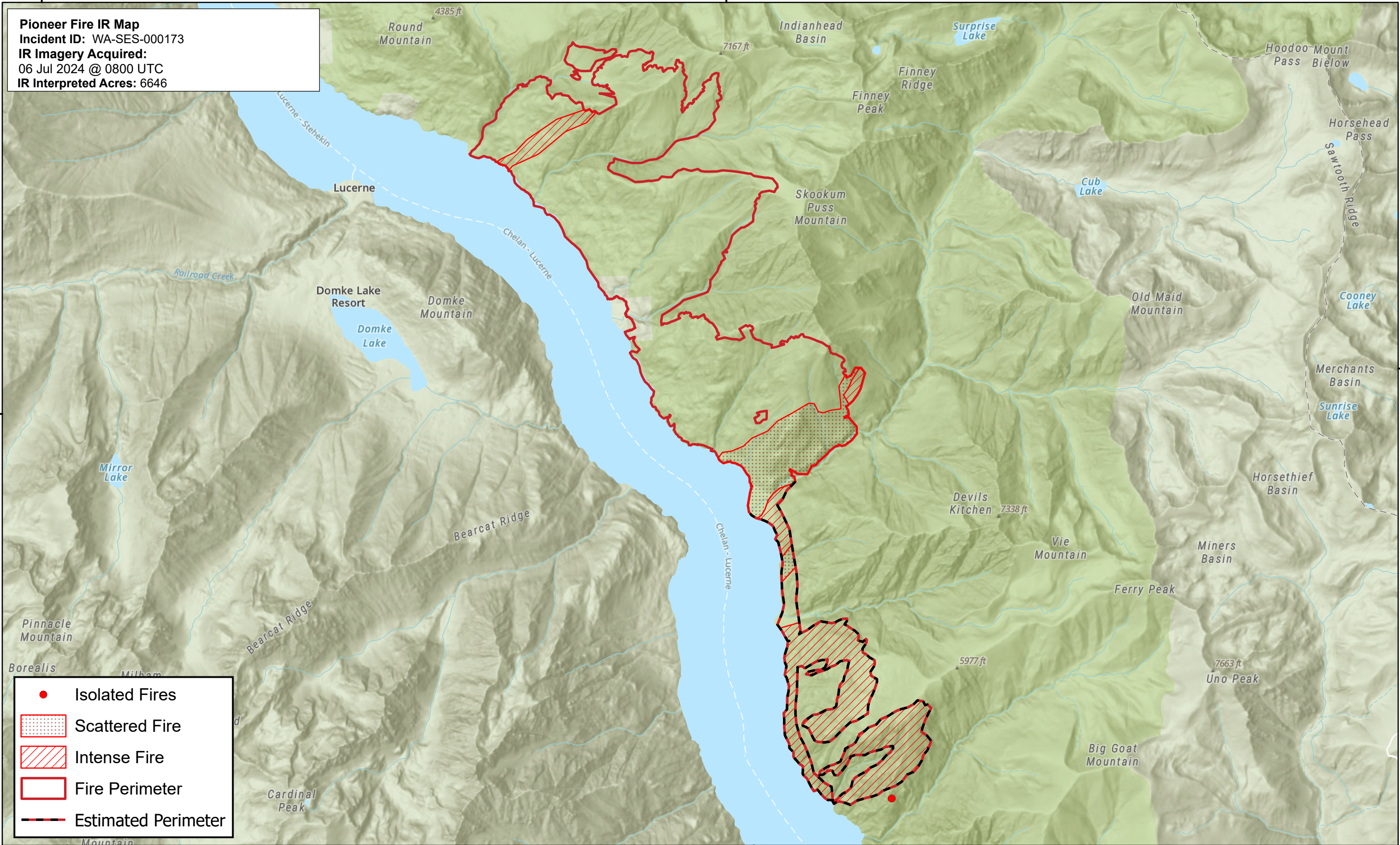




120°40'0"W 120°35'0"W 120°30'0"W 120°25'0"W

Pioneer Fire IR Map
Incident ID: WA-SES-000173
IR Imagery Acquired:
06 Jul 2024 @ 0800 UTC
IR Interpreted Acres: 6646



- Isolated Fires
- Scattered Fire
- ▨▨▨▨ Intense Fire
- Fire Perimeter
- Estimated Perimeter

0 0.5 1 2 3 Miles

Map date: 7/6/2024
Projection: WGS 1984 UTM Zone 10N