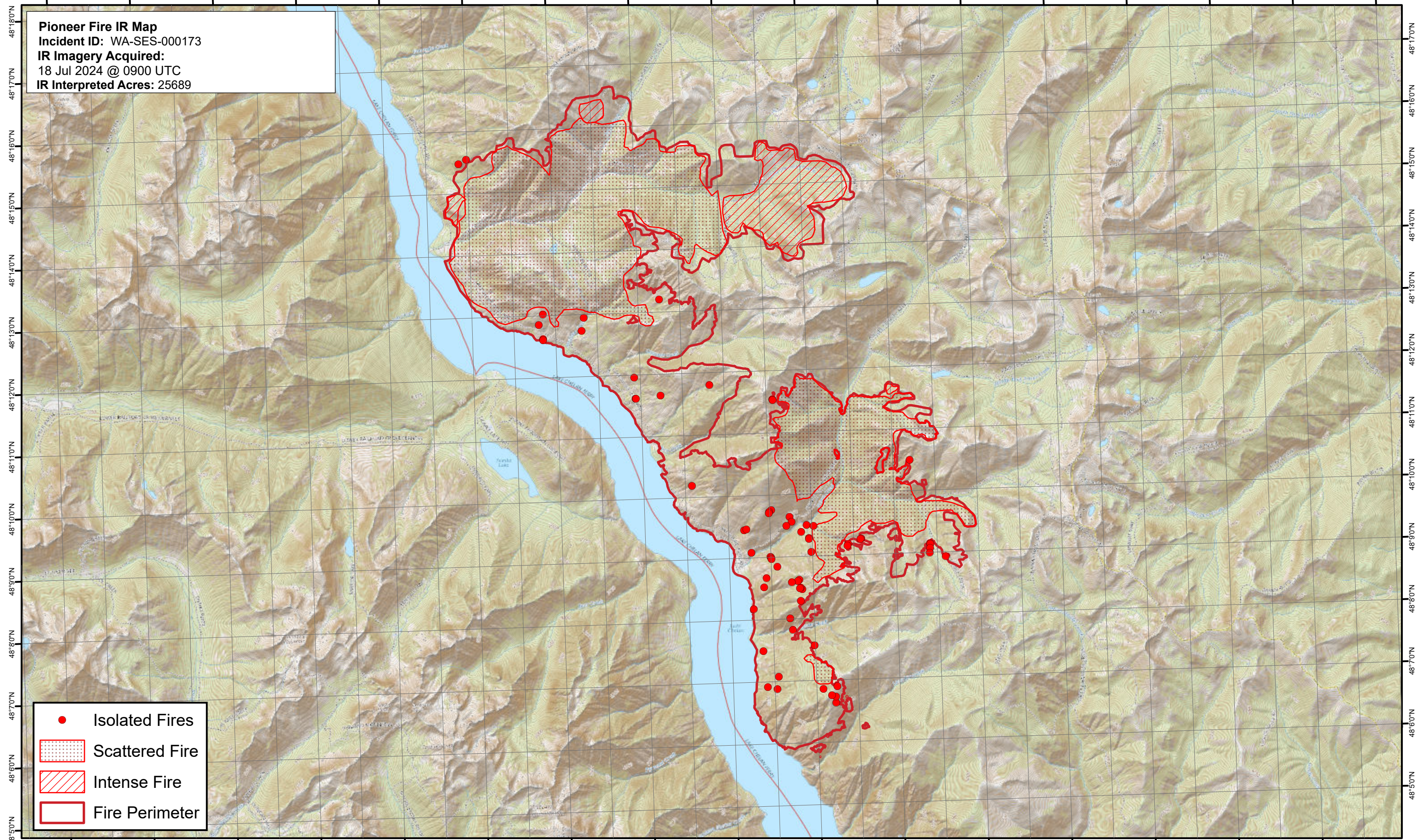


120°46'0"W 120°44'0"W 120°42'0"W 120°40'0"W 120°38'0"W 120°36'0"W 120°34'0"W 120°32'0"W 120°30'0"W 120°28'0"W 120°26'0"W 120°24'0"W 120°22'0"W 120°20'0"W 120°18'0"W 120°16'0"W

Pioneer Fire IR Map
Incident ID: WA-SES-000173
IR Imagery Acquired:
18 Jul 2024 @ 0900 UTC
IR Interpreted Acres: 25689



- Isolated Fires
- ▨ Scattered Fire
- ▧ Intense Fire
- ▭ Fire Perimeter

0 0.5 1 2 3 4 Miles

Map date: 7/18/2024
Projection: WGS 1984 UTM Zone 10N