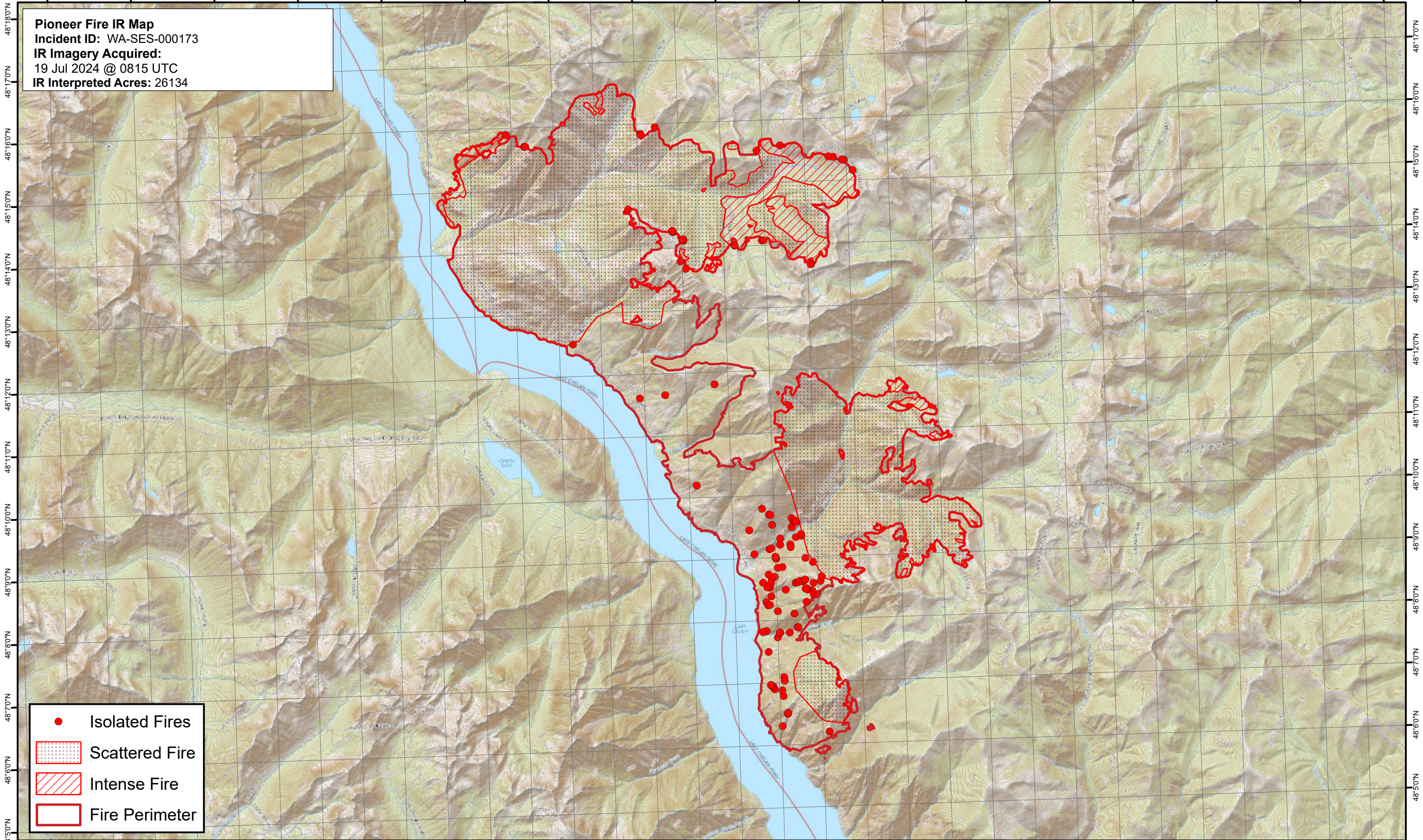




120°46'0"W 120°44'0"W 120°42'0"W 120°40'0"W 120°38'0"W 120°36'0"W 120°34'0"W 120°32'0"W 120°30'0"W 120°28'0"W 120°26'0"W 120°24'0"W 120°22'0"W 120°20'0"W 120°18'0"W 120°16'0"W 120°14'0"W

Pioneer Fire IR Map
Incident ID: WA-SES-000173
IR Imagery Acquired:
19 Jul 2024 @ 0815 UTC
IR Interpreted Acres: 26134



- Isolated Fires
- ▨ Scattered Fire
- ▨ Intense Fire
- ▭ Fire Perimeter

