

INCIDENT ACTION PLAN

1980 SLIDE RANCH

WA-YAA-000035

PAR08J / 1522



OPERATIONAL PERIOD



6/28/2024 0700

to

6/30/2024 1900



INCIDENT OBJECTIVES (ICS 202)

1. Incident Name: 1980 Slide Ranch	2. Operational Period:	Date From: 6/28/2024	Date To: 6/30/2024
		Time From: 0700	Time To: 1900

3. Objective(s):

- Management Objectives
- Provide for emergency personnel and public safety at all times.
 - Protect property, improvements, and infrastructure.
 - Ensure coordinated, timely and accurate release of public information.
 - Foster and maintain relationships with all cooperators and stakeholders.
 - Protect economic, natural, cultural and heritage resources.
 - Maintain fiscal accountability and keep costs commensurate with values at risk.

- Control Objectives
- Keep the fire North of Slide Ranch Rd.
 - Keep the fire South of Fort Rd.
 - Keep the fire East of Signal Peak Rd.
 - Keep the fire West of Tecumseh Rd.

General Situational Awareness:

5. Site Safety Plan Required? Yes No

Approved Site Safety Plan(s) Located at:

6. Incident Action Plan

<input checked="" type="checkbox"/> ICS 203	<input type="checkbox"/> ICS 215A	<input type="checkbox"/> ICS 205 A	<input type="checkbox"/>
<input checked="" type="checkbox"/> ICS 204	<input type="checkbox"/> ICS 220	<input type="checkbox"/> Training Message	<input type="checkbox"/>
<input checked="" type="checkbox"/> ICS 205	<input type="checkbox"/> Facility Maps	<input type="checkbox"/> Travel Map	<input type="checkbox"/>
<input checked="" type="checkbox"/> ICS 206	<input checked="" type="checkbox"/> Weather Forecast	<input type="checkbox"/> Demob Plan	<input type="checkbox"/> County Health Message
<input checked="" type="checkbox"/> ICS 208	<input type="checkbox"/> Fire Behavior	<input type="checkbox"/> Finance Message	<input checked="" type="checkbox"/> ICS 214

7. Prepared By: Position/Title: PSC Signature: _____

8. Approved by Incident Commander: Brad Donahue Signature:

ORGANIZATION ASSIGNMENT LIST (ICS 203)

1. Incident Name: 1980 Slide Ranch		2. Operational Period: Date From: 6/28/2024 Time From: 0700		Date To: 6/30/2024 Time To: 1900	
3. Incident Commander(s) and Command Staff:			7. Operation Section:		
IC/UC's	Brad Donahue	Operations			
IC (T)		Deputy Operations			
Safety Officer		Night Ops			
Information Officer		Staging Area			
Information Officer		Branch		I	
4. Agency/Organization Representatives:		Taskforce		A	
Agency/Organization	Name	Taskforce		Z	
Yakama Nation FMO	Don Jones	Division/Group		Conway	
Yakima FD5	Joel Byam	Division/Group		Smith	
BIA	Wyeth Wallace	Division/Group			
		Branch		II	
		Division/Group			
		Division/Group			
		Division/Group			
		Division/Group			
		Branch		III	
		Division/Group			
		Division/Group			
		Division/Group			
		Division/Group			
		Branch		IV	
		Division/Group			
		Division/Group			
5. Planning Section:		Division/Group			
Chief		Division/Group			
Deputy		Division/Group			
Resource Unit		Division/Group			
Situation Unit		Branch		V	
Documentation Unit		Division/Group			
Demobilization Unit		Division/Group			
GISS		Division/Group			
FBAN		Division/Group			
IMET		Division/Group			
Training Tech Spec		Air Operations Branch		Director:	
		Air Support Group Supervisor			
		Air Tactical Group Supervisor			
		Helibase Manager			
6. Logistics Section		8. Finance/Administration Section:			
Chief	Yakama Dispatch	Chief		Yakama Dispatch	
LSC(T)		Deputy			
Facilities Unit		Procurement Unit			
Ground Support Unit		Comp/Claims Unit			
Communications Unit		PTRC			
Medical Unit					
BCMG(T)					
Prepared By: Name:		Position/Title: PSC		Signature: _____	
ICS 203		Date/Time: 6/27/2024 2300 hours		<small>NIMS IAP</small>	



Fire Weather Forecast



FORECAST NO: 20240627

NAME OF FIRE: 1980 Slide Ranch

PREDICTION FOR: 06/28 - 06/30/2024

SIGNED: *David White*

TIME/DATE ISSUED: 1648 6/27/2024

WEATHER DISCUSSION:

A quiet weather pattern will move in Friday into Saturday, helping to spawn a brief warming trend with light winds before another weather system moves in on Sunday. Expect breezy conditions at the site both Sunday and Monday, before quieter weather prevails Tuesday onward, with another warming trend expected. No rain threats anticipated for the site.

WEATHER FORECAST FOR TODAY:

Sky/weather.....Sunny (15-25 percent).
Max temperature.....81-84.
Min humidity.....20-25 percent.
Wind (20 ft).....Light winds becoming east 4 to 7 mph in the afternoon.
Ridgetop wind.....East winds 5 to 10 mph.
Mixing height.....6600 ft AGL by the afternoon.
Transport winds.....East-Southeast winds around 5 mph.
Haines Index.....2 or very low potential for large plume dominated fire growth.

WEATHER FORECAST FOR TONIGHT:

Sky/weather.....Mostly cloudy (55-65 percent) then becoming partly cloudy (35-45 percent).
Min temperature.....Around 60.
Max humidity.....57-62 percent.
Wind (20 ft).....East winds 4 to 7 mph shifting to the West-Northwest around 5 mph overnight.
Ridgetop wind.....East winds 5 to 8 mph early, shifting Northwest overnight.
Mixing height.....5500 ft AGL early in the evening, then near-surface overnight.
Transport winds.....Northwest around 5 mph.
Haines Index.....2 or very low potential for large plume dominated fire growth.

OUTLOOK FOR TOMMOROW:

Sky/weather.....Mostly cloudy (55-65 percent) then becoming partly cloudy (35-45 percent).
Min temperature.....Around 60.
Max humidity.....57-62 percent.
Wind (20 ft).....East winds 4 to 7 mph shifting to the West-Northwest around 5 mph overnight.
Ridgetop wind.....East winds 5 to 8 mph early, shifting Northwest overnight.
Mixing height.....5500 ft AGL early in the evening, then near-surface overnight.
Transport winds.....Northwest around 5 mph.
Haines Index.....2 or very low potential for large plume dominated fire growth.

EXTENDED FORECAST:

SUNDAY... Partly cloudy. Lows in the upper 50s. Highs in the mid 80s. West winds around 15 mph.
MONDAY... Clear. Lows in the mid 50s. Highs in the mid 80s. West winds around 15 mph.
TUESDAY... Clear. Lows in the lower 50s. Highs in the mid 80s. Northwest winds around 8 mph.
WEDNESDAY... Clear. Lows in the lower 50s. Highs around 90.
INDEPENDENCE DAY... Clear. Lows in the mid 50s. Highs in the lower 90s.

Every Day Is A Good Day For A Tailgate Safety Session

6/28

Heavy Equipment

- Make sure there is a Heavy Equipment Boss (HEQB) to lead each team of heavy equipment. The HEQB is an important leader, safety lookout, navigator, and communication link to the Task Force Leader/Division Group Supervisor.
- HEQBs provide daily safety briefings to their operators and keep them updated on changing weather and fire conditions throughout the day.
- Radio communication is essential for all equipment on the fire. Operators need to be able to always communicate with each other and with the HEQB.
- Fire personal must stay at least 200 feet behind heavy equipment.

6/29

Remember the Driving LCES:

L – Lights

C – Chock Blocks

E - Emergency Brake

S – Seat Belts

One of the greatest hazards we face on any incident is ground transportation. Defensive driving becomes more important when the fire danger seems minor.

Maintain alertness. There is no hurry to get where we are going, getting there safely is the key.

6/30

Complacency

- Daily assignments are becoming routine. Ward off boredom and complacency.
- Take care of personal health needs. Get adequate rest, eat a healthy diet, and hydrate.
- Clearly understand assignment and be accountable for meeting determined objectives.
- Review the 10 standard firefighting orders and 18 “watch out” situations.
- Communicate identified hazards to others. See something, say something.
- Enjoy your work but avoid horseplay.
- Display an appropriate sense of humor.

**Don't leave your Situational Awareness behind, even for a minute,
in life or on a fire.**

ASSIGNMENT LIST (ICS 204 WF)

CONTROLLED UNCLASSIFIED
INFORMATION/BASIC

1. Incident Name: <p style="text-align: center;">1980 Slide Ranch</p>		2. Operational Period: Date From: 06/28/24 Date To: 06/30/24 Time From: 0700 Time To: 1900				3. Branch Taskforce <p style="text-align: center;">I Z</p>		
4. Operations Personnel:						Page 1 of 1 Zulu		
Operations Section Chief:			Night Ops:					
Branch Director:			Branch Safety:					
Division/Group Supervisor:			Air Attack:					
5. Resources Assigned:		** Resources Below in Bold are 12 Hour **						
Resource Identifier	EMT	LWD	Leader	Personnel	Request #	Agency		
C-3 HC2	X		Strobel	20		Three Rivers		
Yakama Fuels			Purnell	15				
O-19 TFLD			Smith	1		Humboldt-Taiyabe NF		
O-16 HEQB			Lowen 541-620-4318	1		BIA - Warm Springs		
O-9 REAF			Maxwell 509-854-4702	1		BIA		
O-20 SMOD			Ball 760-223-6226	6		FT. Simcoe - Lend Lease		
E-23 ENG6			Salas	4		Mt. Tolman		
E-2362 ENG3			Spencer 509-834-5034	4		Umatilla - Lend Lease		
E-27 ENG6						Baily's		
E-28 ENG6						Timberman		
E-26 ENG6						Baily's		
E-24 E641				6		Kootenai National Forest		
E-20						Ordered		
E-21 EXC2			McCune	2		Wakefield Excavation		
E- GRD2						Ordered		
6. Work Assignments: Mop up perimeter and interior as needed Do not use hydrants in White Swan								
7. Special Instructions:								
8. Communications								
Name	Ch	Function	Rx Freq	Rx Tone	Tx Freq	Tx Tone	Mode	Notes
SATUSLO	1	REPEATER	173.8250	110.9	166.3250	110.9		Fire Repeater
SIGNALP	2	REPEATER	170.3625	127.3	163.0375	127.3		
YN TAC 2	4	TACTICAL	168.3250		168.3250			Main Fire TAC
YN TAC 3	5	TACTICAL	168.4250		168.4250			Secondary Fire TAC
AIR2GRD	6	TACTICAL	166.9250		166.9250			
9. Prepared by: Name:				RESL				Signature: _____
ICS 204		Date/Time: 6/27/2024 2200			Personnel Count: 60			

IAP

1980 Slide Ranch
WAYAA-00035

06/28/2024 0600 hours

3103 acres at 06/26/2024 1850 hours

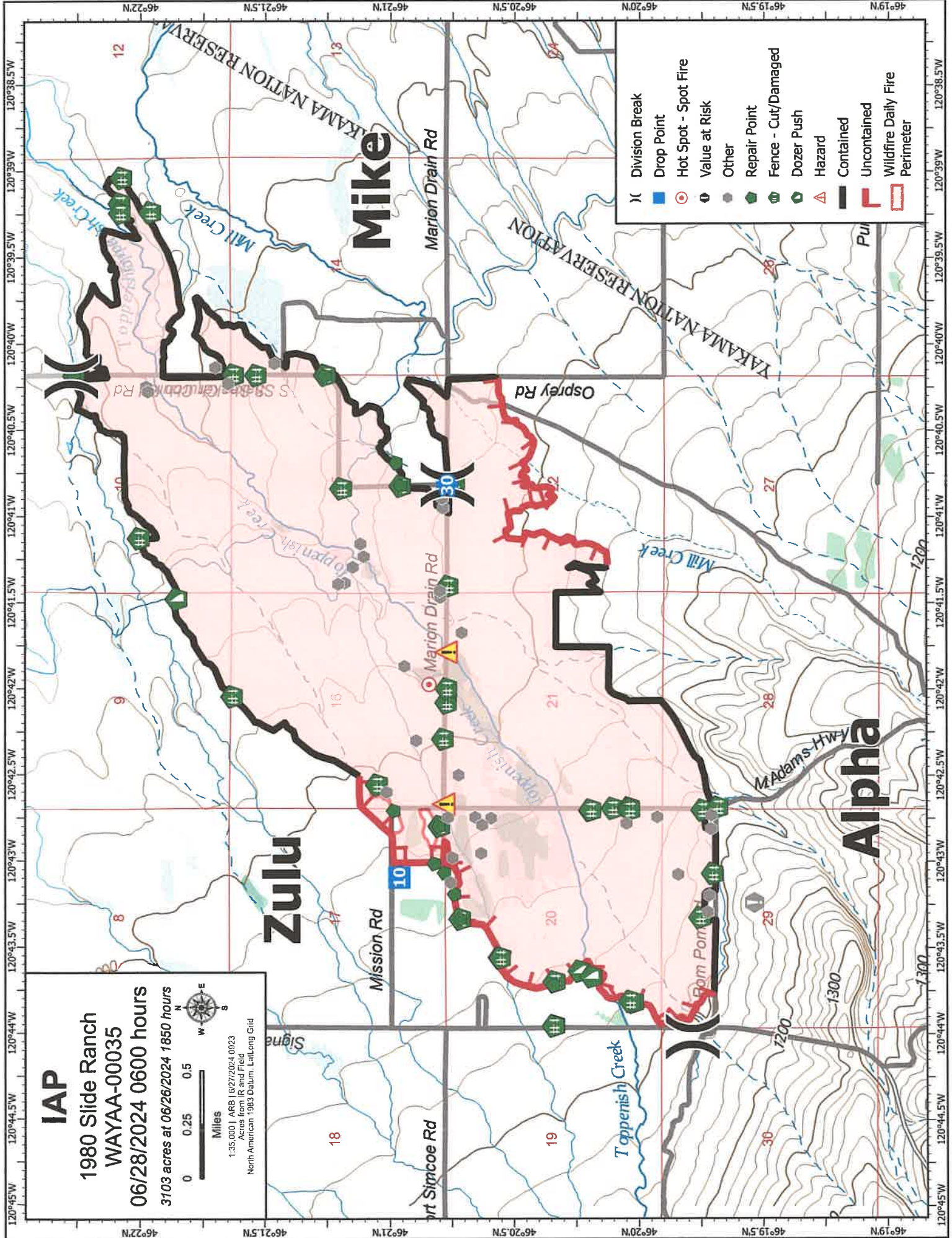
0 0.25 0.5 Miles



1:35,000 | ARB | 6/27/2024 09:23

Acres from IR and Field

North American 1983 Datum, Lullalong Grid



- Division Break
- Drop Point
- Hot Spot - Spot Fire
- Value at Risk
- Other
- Repair Point
- Fence - Cut/Damaged
- Dozer Push
- Hazard
- Contained
- Uncontained
- Wildfire Daily Fire
- Perimeter

Mike

Zulu

Alpha

MEDICAL PLAN (ICS 206 WF)
Controlled Unclassified Information//Basic

Medical Incident Report

FOR A NON-EMERGENCY INCIDENT, WORK THROUGH CHAIN OF COMMAND TO REPORT AND TRANSPORT INJURED PERSONNEL AS NECESSARY.

FOR A MEDICAL EMERGENCY: IDENTIFY ON-SCENE INCIDENT COMMANDER BY NAME AND POSITION AND ANNOUNCE "MEDICAL EMERGENCY" TO INITIATE RESPONSE FROM IMT COMMUNICATIONS/DISPATCH.

Use the following items to communicate situation to communications/dispatch.

- CONTACT COMMUNICATIONS / DISPATCH** (Verify correct frequency prior to starting report)
Ex: "Communications, Div. Alpha. Stand-by for Emergency Traffic."
- INCIDENT STATUS:** Provide incident summary (including number of patients) and command structure.
Ex: "Communications, I have a Red priority patient, unconscious, struck by a falling tree. Requesting air ambulance to Forest Road 1 at (Lat./Long.) This will be the Trout Meadow Medical, IC is TFLD Jones. EMT Smith is providing medical care."

Severity of Emergency / Transport Priority	<input type="checkbox"/> RED / PRIORITY 1 Life or limb threatening injury or illness. Evacuation need is IMMEDIATE <i>Ex: Unconscious, difficulty breathing, bleeding severely, 2° – 3° burns more than 4 palm sizes, heat stroke, disoriented.</i> <input type="checkbox"/> YELLOW / PRIORITY 2 Serious Injury or illness. Evacuation may be DELAYED if necessary. <i>Ex: Significant trauma, unable to walk, 2° – 3° burns not more than 1-3 palm sizes.</i> <input type="checkbox"/> GREEN / PRIORITY 3 Minor Injury or illness. Non-Emergency transport <i>Ex: Sprains, strains, minor heat-related illness.</i>
Nature of Injury or Illness & Mechanism of Injury	Brief Summary of Injury or Illness <i>(Ex: Unconscious, Struck by Falling Tree)</i>
Evacuation Request	Air Ambulance / Short Haul/Hoist Ground Ambulance / Other
Patient Location	Descriptive Location & Lat. / Long. (WGS84)
Incident Name	Geographic Name + Medical <i>(Ex: Trout Meadow Medical)</i>
On-Scene Incident Commander	Name of on-scene IC of incident within an incident <i>(Ex: TFLD Jones)</i>
Patient Care	Name of Care Provider <i>(Ex: EMT Smith)</i>

3. INITIAL PATIENT ASSESSMENT: Complete this section for each patient as applicable (start with the most severe patient)

Patient Assessment: See IRPG PAGE 106

Treatment:

4. EVACUATION PLAN:

Evacuation Location (if different): (Descriptive Location (drop point, intersection, etc.) or Lat. / Long.) Patient's ETA to Evacuation Location:

Helispot / Extraction Site Size and Hazards:

5. ADDITIONAL RESOURCES / EQUIPMENT NEEDS:

Example: Paramedic/EMT, crews, immobilization devices, AED, oxygen, trauma bag, IV/fluid(s), splints, rope rescue, wheeled litter, HAZMAT, extrication

6. COMMUNICATIONS: Identify State Air/Ground EMS Frequencies and Hospital Contacts as applicable

Function	Channel Name/Number	Receive (RX)	Tone/NAC *	Transmit (TX)	Tone/NAC *
COMMAND					
AIR-TO-GRND					
TACTICAL					

7. CONTINGENCY: Considerations: If primary options fail, what actions can be implemented in conjunction with primary evacuation method? Be thinking ahead..

8. ADDITIONAL INFORMATION: Updates/Changes, etc.

REMEMBER: Confirm ETAs of resources ordered. Act according to your level of training. Be Alert. Keep Calm. Think Clearly. Act Decisively.