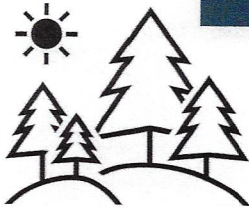


INCIDENT ACTION PLAN

UPPER RUBY FIRE



For maps, evaluations, and IAPs Scan the QR Code!




Friday, August 23, 2024

0700-2000 Operational Period

WA-COF-001850

AIR	Daily	Approval
DNR	%	
BIA	%	

GROUND	Daily	Approval
DNR	%	
BIA	%	

Incident Objectives	1. Incident Name Upper Ruby	2. Date Prepared 8/22/2024	3. Time Prepared 1200
4. Operational Period (Date and Time) 8/23/2024 0700-2000			
5. General Control Objectives for the Incident (include Alternatives) <ul style="list-style-type: none"> • Provide for firefighter and public safety at all times. This includes the application of the "10 and 18", LCES, and the Risk Management Process. • Ensure structures and infrastructure are properly identified and mopped up around • Minimize acres burned. • Act professionally and in a manner that fosters good relationships with the public, private landowners, timber industry representatives, elected officials and other stakeholders. • Follow agency policies at all times and respect the policies of the host agency. • Maximize opportunities for cost savings without jeopardizing public or firefighter safety • Provide timely communications and accurate information as it becomes available. 			
6. Weather Forecast for Operational Period See attached weather forecast			
7. General Safety Message <ul style="list-style-type: none"> • Provide for firefighter and public safety at all times. • Monitor compliance of 10 and 18 by all incident personnel. • Adhere to 2:1 work/rest ratio for all fire line personnel. • Aviation safety is high priority. Assess the risk against the benefit of the mission. • Ensure all assigned personnel understand emergency medical reporting & transport procedures including locations of nearest emergency responders & facilities. 			
8. Attachments (check if attached)			
ICS-202	9. Prepared by (PSC) Jessica Walston	10. Approved by (IC) 	

ORGANIZATION ASSIGNMENT LIST			
1. Incident Name		Upper Ruby	9. OPERATIONS SECTION
2. Date	8/22/2024	3. Time	1200
Planning	Greg Anderson		
4. Operational Period	8/23/2024	0700-2000	Field
Sean Soliday			
5. INCIDENT COMMANDER & STAFF		a. Division A	
Incident Commander	Andrew Stenbeck	Division Sup	Kyle Buckmiller
Incident Commander (t)		TFLD	
Liasion Officer		b. Division M	
Safety Officer	Dan Garner	Division Sup	Todd Dormaier
		TFLD	
Information Officer	Gayne Sears	c. Division Z	
		Division Sup	Brett Walker
		TFLD	
6. AGENCY REPRESENTATIVE		d. EQUIPMENT	
Agency	Name	Divison Sup	Jim Wheeler
USFS	Luke Decker		
USFW	Cassie Roeder		
WA DNR	Pat Ryan		
7. PLANNING SECTION			
PSC	Jessica Walston		
PSC(t)	Brian Hansen		
PSC			
GISS	Kat Russell		
ITSS	Kyle Wagner		
		10. FINANCE SECTION	
Comms Manager	Shawn Pichette	Chief	Tina Paccereilli
COMT	Bob Leaming	PTRC	Laurie Babbitt
RADO	Kerry Nyhuis		
RADO	Duane Hughes		
Trailer	509-389-2002		
8. LOGISTICS SECTION		11. CONTACTS / OTHER INFORMATION	
Chief	Joe Hoagland	NEWICC (509) 685-6900	
Chief deputy			
Chief(t)	Cole Shirley		
		Prepared by (Resource Unit Leader)	
		Jessica Walston	

DIVISION ASSIGNMENT LIST			1. Branch		2. Division / Group A			
3. Incident Name Upper Ruby			4. Operational Period Date: 8/23/2024 Time: 0700-2000					
5. Operations Personnel								
Operations Chief		<i>Sean Soliday</i>						
Safety Officer		<i>Dan Garner</i>			Division/Group Supervisor		<i>Kyle Buckmiller</i>	
6. Resources Assigned this Period								
RO #	Strike Team/Task Force/Resource	Leader	# People	Contact (phone, radio freq, etc.)	EMT	LWD	Remarks	
O-23	TFLD	JORDAN REEVES	1					
O-7	TFLD	ANDREW TRIOLO	1	303-519-0302				
C-7	CR2I - NW - COF - C101 THREE RIVERS	BRIAN STROBEL	21			2	DAY 3	
C-2	CRW1 - ROOSEVELT IHC	LARRY MONEY	21			4	DAY 1	
O-14	SMOD - SMOD - REPUBLIC	GABE GIDDINGS	15				DAY 4	
	HEQB	STRADY	1	509-679-2314				
LOL	ENG 631		3					
E-10	SKG2 - CHANTRY - 50S645	AUBERT	2				DAY 1	
E-6	DZR2 - VAN DYKE LOGGING, INC. - R00364		1					
E-7	DZR3 - TIGER TRUCKING, INC. - G01116	ROGER HIATT	1					
E-2	AXSUS ENTERPRISES LLC							
			66					
7. Work Assignments								
8. Special Instructions								
9. Communication Summary								
Function	Name	Mode	Frequency					
PRIMARY COMMAND	CMD 1	A	151.5125	N	186.2	58.407	N	186.2
SECONDARY	CALSPL-E	A	171.475	N	146.2	164.625	N	103.5
ALPHA TAC	TAC 3	A	151.76	N	186.2	151.76	N	186.2
EQUIPMENT TAC	TAC 6	A	151.625	N	186.2	151.625	N	186.2
PRIMARY A/G	A/G PRIMARY	A	169.2	N	0	169.2	N	0
SECONDARY A/G	A/G SECONDARY	A	167.95	N	0	167.95	N	0
Prepared by (RESL)			Approved by (PSC) Jessica Walston			Date: 8/22/2024	Time: 1200	

DIVISION ASSIGNMENT LIST			1. Branch		2. Division / Group			
3. Incident Name Upper Ruby			4. Operational Period Date: 8/23/2024 Time: 0700-2000					
5. Operations Personnel								
Operations Chief		<i>Sean Soliday</i>						
Safety Officer		<i>Dan Garner</i>		Division/Group Supervisor		<i>Todd Dormaier</i>		
6. Resources Assigned this Period								
RO #	Strike Team/Task Force/Resource	Leader	# People	Contact (phone, radio freq, etc.)	EMT	LWD	Remarks	
C-4	CRW2 - T2C496 FRANCISCO CISNEROS III DBA IRON MOUNTAIN	CHIPPERZ MARTINEZ(t)	20	509-400-1368 509-439-2908				
C-1	CRW1 - WOLF CREEK IHC	JEREMIAH COKE	20	541-391-1021				
O-17	TFLD	SHANNON CLARK	1					
E-18	ENG3 - ANGEL FIRE FD E3573	MICHEAL LUJAN	3					
E-19	ENG3 - FARMINGTON FD E31	CODY HILL	4					
E-20	ENG6 - COCHITI FD BRUSH 83	DOMINICK ORTIZ	2					
E-21	ENG6 - RUIDOSO FD 329203 - E 17	ALEC DAVIS	3					
			53					
7. Work Assignments								
8. Special Instructions								
9. Communication Summary								
Function	Name	Mode	Frequency					
PRIMARY COMMAND	CMD 1	A	151.5125	N	186.2	158.4075	N	186.2
SECONDARY COMMAND / MIKE TAC	CALSPL-E	A	171.475	N	146.2	164.625	N	103.5
EQUIPMENT TAC	TAC 4	A	151.7	N	186.2	151.7	N	186.2
PRIMARY A/G	TAC 6	A	151.625	N	186.2	151.625	N	186.2
SECONDARY A/G	A/G PRIMARY	A	169.2	N	0	169.2	N	0
	A/G SECONDARY	A	167.95	N	0	167.95	N	0
Prepared by (RESL)		Approved by (PSC) Jessica Walston			Date: 8/22/2024		Time: 1200	

DIVISION ASSIGNMENT LIST			1. Branch		2. Division / Group Z			
3. Incident Name Upper Ruby			4. Operational Period Date: 8/23/2024 Time: 0700-2000					
5. Operations Personnel								
Operations Chief		<i>Sean Soliday</i>						
Safety Officer		<i>Dan Garner</i>		Division/Group Supervisor		<i>Brett Walker</i>		
6. Resources Assigned this Period								
RO #	Strike Team/Task Force/Resource	Leader	# People	Contact (phone, radio freq, etc.)	EMT	LWD	Remarks	
C-3	CR2I - NW - NES - HIGHLANDS - DNR	SCHARTENLIEB	20	509-675-6452	2			
C-6	CRW1 - CRW1 - YUKON TERRITORIES	PIKE	20	867-334-3684	5			
LOL	CREW 301	MORSE	20	509-71-5022	2			
E-7	DZR3 - TIGER TRUCKING, INC. - G01116		1		1			
E-8	FEL1 - AXSUS ENTERPRISES LLC - 133155		2					
			63					
7. Work Assignments								
8. Special Instructions								
9. Communication Summary								
Function	Name	Mode	Frequency					
PRIMARY COMMAND	CMD 1	A	151.5125	N	186.2	158.4075	N	186.2
SECONDARY COMMAND /	CALSPL-E	A	171.475	N	146.2	164.625	N	103.5
ZULU TAC	TAC 5	A	151.505	N	186.2	151.505	N	186.2
EQUIPMENT TAC	TAC 6	A	151.625	N	186.2	151.625	N	186.2
PRIMARY A/G	A/G PRIMARY	A	169.2	N	0	169.2	N	0
SECONDARY A/G	A/G SECONDARY	A	167.95	N	0	167.95	N	0
Prepared by (RESL)		Approved by (PSC) Jessica Walston			Date: 8/22/2024		Time: 1200	

DIVISION ASSIGNMENT LIST			1. Branch		2. Division / Group			EQUIPMENT	
3. Incident Name <p style="text-align: center; margin: 0;">Upper Ruby</p>				4. Operational Period Date: 8/23/2024 Time: 0700-2000					
5. Operations Personnel									
Operations Chief		<i>Sean Soliday</i>							
Safety Officer		<i>Dan Garner</i>			Division/Group Supervisor			<i>Jim Wheeler</i>	
6. Resources Assigned this Period									
RO #	Strike Team/Task Force/Resource	Leader	# People	Contact (phone, radio freq, etc.)	EMT	LWD	Remarks		
E-3	WTS1 - PECN 2 – WT25		1						
E-1	WTS2 - Axsus Enterprises		1						
E-12	WTS2 - ASPEN MOUNTAIN RESOURCES INC -		1						
E-13	WTS2 - ELIJAH NOEL - 164086		1						
E-24	WTS2 - MILLER TIMBER SERVICES, INC. - VE8393		1						
E-15	PEND OREILLE COUNTY FIRE DISTRICT #6 TENDER 43		1						
			6						
7. Work Assignments									
8. Special Instructions									
9. Communication Summary									
Function	Name	Mode	Frequency						
PRIMARY COMMAND	CMD 1	A	151.5125	N	186.2	158.4075	N	186.2	
SECONDARY COMMAND /	CALSPL-E	A	171.475	N	146.2	164.625	N	103.5	
EQUIPMENT TAC	TAC 6	A	151.625	N	186.2	151.625	N	186.2	
ALPHA TAC	TAC 3	A	151.76	N	186.2	151.76	N	186.2	
MIKE TAC	TAC 4	A	151.7	N	186.2	151.7	N	186.2	
ZULU TAC	TAC 5	A	151.505	N	186.2	151.505	N	186.2	
PRIMARY A/G	A/G PRIMARY	A	169.2	N	0	169.2	N	0	
SECONDARY A/G	A/G SECONDARY	A	167.95	N	0	167.95	N	0	
Prepared by (RESL)		Approved by (PSC) <p style="text-align: center; margin: 0;">Jessica Walston</p>				Date: <p style="text-align: center; margin: 0;">8/22/2024</p>		Time: <p style="text-align: center; margin: 0;">1200</p>	

IAP

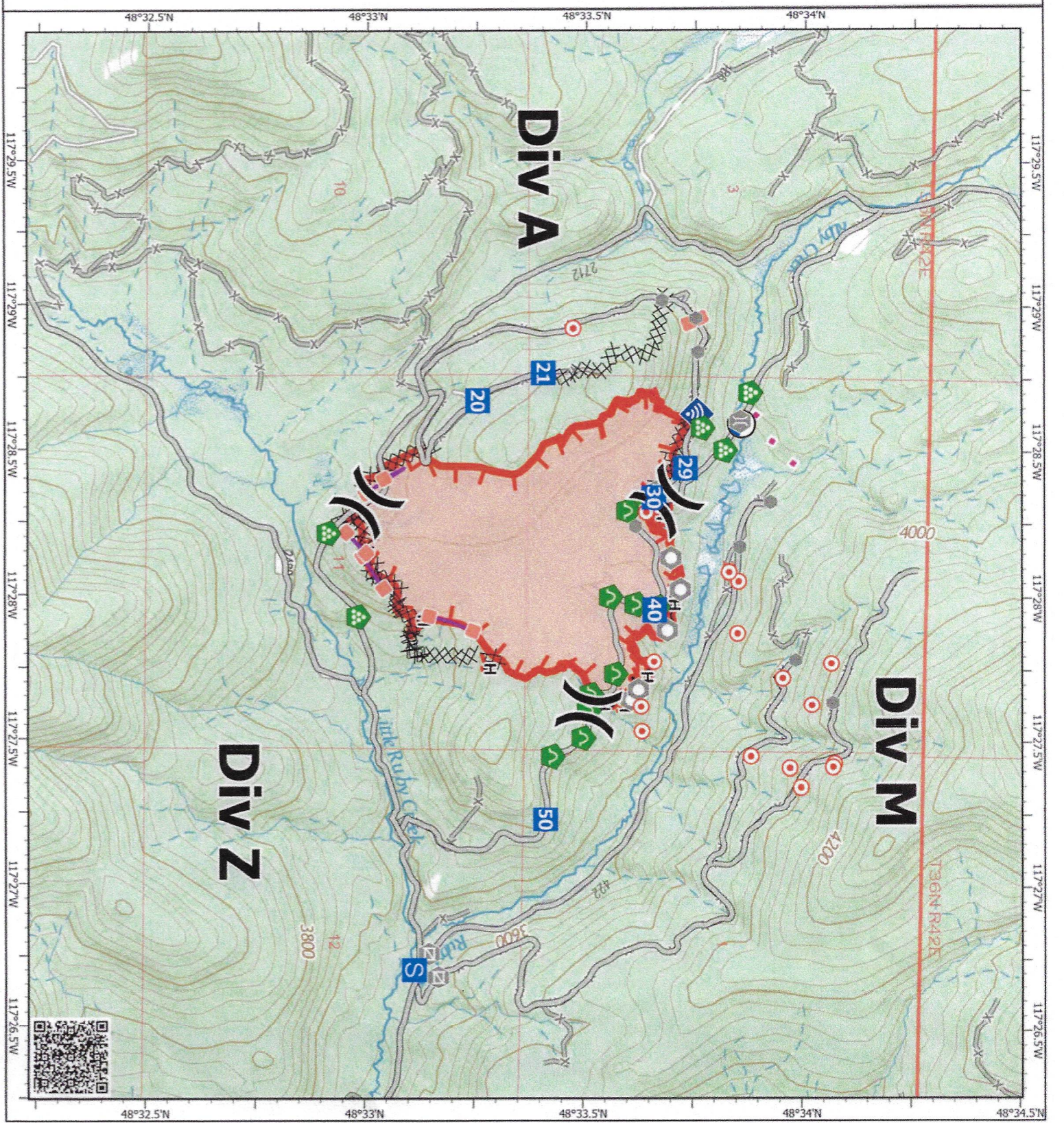
Upper Ruby
WACOF-001850
08/23/2024

276 acres at 08/22/2024 1718

- X Division Break
- Drop Point
- Staging Area
- Hot Spot - Spot Fire
- Other
- Landmark
- Gate
- Bridge
- Landing or Log Deck
- Culvert
- Internet Access
- Draft Site
- ⊗ Completed Dozer Line
- H Completed Hand Line
- Proposed Line
- Access Route
- Retardant Drop
- Uncontained
- Wildfire Daily Fire Perimeter
- World Hillshade



1:22,000 | TYPE 3 MIT NE31 08/22/2024 2027
Acres from IR and GPS
North American 1983 Datum Lullong Grid



DISCUSSION...

Low pressure moves in Friday and this weekend. Rain showers become likely Friday afternoon and evening, with a chance for thunderstorms, which could produce wind gusts over 30 mph. The chance of wetting rain is low even with thunderstorms, as they may move too quickly to bring much measurable rain. Rain chances continue into Saturday, decreasing Saturday night into Sunday. Temperatures cool.

.FRIDAY..

Sky/weather.....Increasing clouds. A chance for rain showers starting after 1200...becoming likely after 1600-1700. A chance of thunderstorms in the afternoon.

CWR.....5 percent.

LAL.....3.

Max temperature.....Around 75.

Min humidity.....44 percent.

Wind (20 ft).....East winds 5 to 6 mph shifting to the south 6 to 9 mph with gusts to 18 mph in the afternoon.
Gusty and erratic winds expected near thunderstorms.

Mixing height.....4000 ft AGL.

Transport winds.....East around 7 mph shifting to the south in the afternoon.

Haines Index.....5 Moderate.

.FRIDAY NIGHT..

Sky/weather.....Mostly cloudy. Rain showers likely with a chance of thunderstorms in the evening. A chance rain showers and slight chance of thunderstorms overnight.

CWR.....5 percent.

LAL.....3.


Min temperature.....Around 46.

Max humidity.....83 percent.

Wind (20 ft).....Southwest winds 7 to 9 mph with gusts to 20 mph in the evening becoming south 3 to 8 mph.
Gusty and erratic winds expected near thunderstorms.

Mixing height.....3000 ft AGL falling to near the surface Transport winds.....South 12 to 14 mph.

Haines Index.....3 Very Low.

INCIDENT RADIO COMMUNICATIONS PLAN I-205				1. INCIDENT NAME		2. DATE/TIME PREPARED		3. OPERATIONAL PERIOD DATE/TIME			
				UPPER RUBY		8/22/2024		8/23/2024			
4. BASIC RADIO CHANNEL UTILIZATION											
Ch #	Function	Channel Name	Assignment	RX Freq	N/W	RX Tone/NAC	TX Freq	N/W	TX Tone/NAC	Mode Analog (A) Digital (D) Mixed (M)	Remarks
1	COMMAND	CMD 1	CMD	151.5125	N	186.2	158.4075	N	186.2	A	PRIMARY COMMAND
2	COMMAND	CMD 2	CMD	154.5275	N	186.2	158.4000	N	186.2	A	FUTURE USE
3	TAC	TAC 3	DIV A	151.7600	N	186.2	151.7600	N	186.2	A	ALPHA TAC
4	TAC	TAC 4	DIV M	151.7000	N	186.2	151.7000	N	186.2	A	MIKE TAC
5	TAC	TAC 5	DIV Z	151.5050	N	186.2	151.5050	N	186.2	A	ZULU TAC
6	TAC	TAC 6	EQUIP	151.6250	N	186.2	151.6250	N	186.2	A	EQUIPMENT TAC
7	TAC	TAC 7		154.3025	N	0.0	154.3025	N	0.0	A	UNASSIGNED
8	COMMAND	CALSPL-E	CMD	171.4750	N	146.2	164.6250	N	103.5	A	SECONDARY COMMAND / IA COMMAND
9	TAC	COL TAC	TAC	167.3750	N	0.0	167.3750	N	146.2	A	IA TAC
10	TAC	FS TAC	TAC	168.2000	N	0.0	168.2000	N	0.0	A	IA TAC
11	TAC	DNR TAC 1	TAC	151.3100	N	103.5	151.3100	N	103.5	A	IA TAC
12	A/G	A/G PRIMARY	A/G P	169.2000	N	0.0	169.2000	N	0.0	A	PRIMARY A/G
13	A/G	A/G SECONDARY	A/G S	167.9500	N	0.0	167.9500	N	0.0	A	SECONDARY A/G
14	A/G	A/G 51	A/G IA	168.3125	N	0.0	168.3125	N	0.0	A	IA A/G
15	MEDEVAC A/G	VMED 29	MEDIVAC	155.3475	N	156.7	155.3475	N	156.7	A	AIR MEDICAL EVACUATION
16	AIRGUARD	AIRGUARD	EMERGENCY	168.6250	N	0.0	168.6250	N	110.9	A	EMERGENCY USE
5. Special Instructions:											
6. I-205 Prepared By: Communications Unit Leader						Name: SHAWN PICHETTE		Signature: 			



PLEASE FOLLOW ONE WAY TRAFFIC SIGNAGE

Please camp in designated areas only, away from vehicles.

Showers: 0500-1000 & 1800-2230

Breakfast: 0530-0730

Dinner: 0700-2100

Safety Message

Incident:
Upper Ruby

Date:
August 23, 2024

Time:
Day Shift

Major Hazard and Risk:

**Transportation
Heavy Equipment
Fire Weakened Trees/Snags**

Implement LCES prior to operational engagement.

Transportation: Drive defensively, headlights on, keep windshields clean, always use backers, narrow roads w/very soft shoulders.

Heavy Equipment Operators, Wear your seatbelts too!!!



Always use caution when heavy equipment is in use, stay well clear, especially in timber, do not work below.

Fire Weakened Trees/Snags: Assess, identify, communicate, isolate. **60+ hours since fire start.**

Air Resources: Stay alert, keep well clear of drop area.

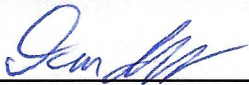
Bees: ID those with allergy, use caution while eating.

Review the Medical Plan, BEFORE you need it.

STAY ALERT, STAY ALIVE!

Dan Garner SOFR

1. Incident/Project Name		2. Operational Period					
Upper Ruby		8/23/24 Day Shift					
3. Ambulance Services							
Name	Complete Address	Phone & EMS Frequency	Advanced Life Support (ALS)				
PO County FD #2	Blueslide/Tiger/Metaline Falls, WA	911/509-442-2311	<input checked="" type="checkbox"/> Yes	<input type="checkbox"/> No			
PO County FD #4	Dalkena, WA	911/509-447-2476	<input type="checkbox"/> Yes	<input checked="" type="checkbox"/> No			
Kalispel Tribal FD	Usk, WA	911	<input type="checkbox"/> Yes	<input checked="" type="checkbox"/> No			
South PO Fire and Rescue	Several locations in South PO County	911/509-447-5305	<input type="checkbox"/> Yes	<input checked="" type="checkbox"/> No			
4. Air Ambulance Services							
Name	Phone	Type of Aircraft & Capability					
Lifeflight Network, Spokane, WA	Call NEWICC / 800-232-0911	Advanced Life Support					
Airlift Northwest	Call NEWICC/	Advanced Life Support					
Fairchild AFB, Airway Hieghts, WA	Call NEWICC / 509-247-4051	Advanced Life Support					
Spokane County Sheriff	Call NEWICC/ 509-532-8900	Hoist ship, Advance Life Support,additional air ambulance for transport					
5. Hospitals							
Name Complete Address	GPS Datum – WGS 84 Coordinate Standard Degrees Decimal Minutes DD° MM.MMM' N - Lat DD° MM.MMM' W - Long		Travel Time Air Gnd	Phone	Helipad		Level of Care Facility
	Lat:	Long:			VHF:	<input checked="" type="checkbox"/> Yes	
Newport Hospital; 714 Pine Street; Newport, WA	N48 10.93	W117 02.96		509-447-7928	<input checked="" type="checkbox"/> Yes	<input type="checkbox"/> No	Level 4 Trama Center
Providence Sacred Heart; 101 W 8th; Spokane, WA	N47 38.95	W117 24.78		509-474-3131	<input checked="" type="checkbox"/> Yes	<input type="checkbox"/> No	Level 2 Trama Center
Providence Holy Family; 5633 N. Lidgerwood, Spokane, WA	N47 42.57	W117 24.4		509-482-0111	<input checked="" type="checkbox"/> Yes	<input type="checkbox"/> No	Level 3 Trama Center
Deaconess Hospital; 800 W 5th Avenue, Spokane, WA	N47 39.1	W117 25.46		509-458-5800	<input checked="" type="checkbox"/> Yes	<input type="checkbox"/> No	Level 3 Trama Center
Harborview Medical Center; 325 9th Avenue, Seattle, WA	N47 36.1	W121 19.3		206-744-3000 Emergency # 206-744-4074	<input checked="" type="checkbox"/> Yes	<input type="checkbox"/> No	Level 1 Trama Center Burn Center
	Lat:				<input type="checkbox"/> Yes	<input type="checkbox"/> No	
	Long:						
	VHF:						

6. Division Branch		Area Location Capability	
<p>Identify crew EMTs on the line for each Division prior to engaging. In case of urgent situation, notify your supervisor and follow the MEDICAL INCIDENT REPORT "ICS 206" procedure on pages 118-120 in the 2022 IRPG. Notify operations of needs and location on command channel. Operations will notify NEWICC and base camp. Minimize radio traffic and maintain situational awareness.</p>			
	EMS Responders &		
	Equipment Available on		
	Medical Emergency		
	ETA for Ambulance to		
	Air:		
	Ground:		
	Approved Helispot:		
	Lat:		
Long:			
	EMS Responders &		
	Equipment Available on		
	Medical Emergency		
	ETA for Ambulance to		
	Air:		
	Ground:		
	Approved Helispot:		
	Lat:		
Long:			
7. Name & Location		Remote Camp Location(s)	
	Point of Contact:		
	EMS Responders &		
	Equipment Available on		
	Medical Emergency Channel:		
	ETA for Ambulance to Scene:		
	Air:		
	Ground:		
	Approved Helispot:		
Lat:			
Long:			
	Point of Contact:		
	EMS Responders &		
	Equipment Available on		
	Medical Emergency Channel:		
	ETA for Ambulance to Scene:		
	Air:		
	Ground:		
	Approved Helispot:		
Lat:			
Long:			
8. Prepared By (Medical Unit Leader)	9. Date/Time	10. Reviewed By (Safety Officer)	11. Date/Time
Dan Garner SOFR		Dan Garner SOFR 	8-22-24 16:30

MEDICAL PLAN (ICS 206 WF)

Controlled Unclassified Information//Basic

Medical Incident Report

FOR A NON-EMERGENCY INCIDENT, WORK THROUGH CHAIN OF COMMAND TO REPORT AND TRANSPORT INJURED PERSONNEL AS NECESSARY.

FOR A MEDICAL EMERGENCY: IDENTIFY ON SCENE INCIDENT COMMANDER BY NAME AND POSITION AND ANNOUNCE "MEDICAL EMERGENCY" TO INITIATE RESPONSE FROM IMT COMMUNICATIONS/DISPATCH.

Use the following items to communicate situation to communications/dispatch.

1. CONTACT COMMUNICATIONS / DISPATCH (Verify correct frequency prior to starting report)

Ex: "Communications, Div. Alpha. Stand-by for Emergency Traffic."

2. INCIDENT STATUS: Provide incident summary (including number of patients) and command structure.

Ex: "Communications, I have a Red priority patient, unconscious, struck by a falling tree. Requesting air ambulance to Forest Road 1 at (Lat./Long.) This will be the Trout Meadow Medical, IC is TFLD Jones. EMT Smith is providing medical care."

Severity of Emergency / Transport Priority	<input type="checkbox"/> RED / PRIORITY 1 Life or limb threatening injury or illness. Evacuation need is IMMEDIATE Ex: Unconscious, difficulty breathing, bleeding severely, 2 nd - 3 rd burns more than 4 palm sizes, heat stroke, disoriented. <input type="checkbox"/> YELLOW / PRIORITY 2 Serious injury or illness. Evacuation may be DELAYED if necessary. Ex: Significant trauma, unable to walk, 2 nd - 3 rd burns not more than 1-3 palm sizes. <input type="checkbox"/> GREEN / PRIORITY 3 Minor injury or illness. Non-Emergency transport Ex: Sprains, strains, minor heat-related illness.	
Nature of Injury or Illness & Mechanism of Injury		Brief Summary of Injury or Illness (Ex: Unconscious, Struck by Falling Tree)
Transport Request		Air Ambulance / Short Haul/Hoist Ground Ambulance / Other
Patient Location		Descriptive Location & Lat. / Long. (WGS84)
Incident Name		Geographic Name + "Medical" (Ex: Trout Meadow Medical)
On-Scene Incident Commander		Name of on-scene IC of Incident within an Incident (Ex: TFLD Jones)
Patient Care		Name of Care Provider (Ex: EMT Smith)

3. INITIAL PATIENT ASSESSMENT: Complete this section for each patient as applicable (start with the most severe patient)

Patient Assessment: See IRPG page 106

Treatment:

4. TRANSPORT PLAN:

Evacuation Location (if different): (Descriptive Location (drop point, intersection, etc.) or Lat. / Long.) Patient's ETA to Evacuation Location:

Helispot / Extraction Site Size and Hazards:

5. ADDITIONAL RESOURCES / EQUIPMENT NEEDS:

Example: Paramedic/EMT, Crews, Immobilization Devices, AED, Oxygen, Trauma Bag, IV/Fluid(s), Splints, Rope rescue, Wheeled litter, HAZMAT, Extrication

6. COMMUNICATIONS: Identify State Air/Ground EMS Frequencies and Hospital Contacts as applicable

Function	Channel Name/Number	Receive (RX)	Tone/NAC *	Transmit (TX)	Tone/NAC *
COMMAND					
AIR-TO-GRND					
TACTICAL					

7. CONTINGENCY: Considerations: If primary options fail, what actions can be implemented in conjunction with primary evacuation method? Be thinking ahead.

8. ADDITIONAL INFORMATION: Updates/Changes, etc.

REMEMBER: Confirm ETA's of resources ordered. Act according to your level of training. Be Alert. Keep Calm. Think Clearly. Act Decisively.