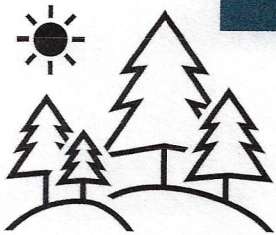


# INCIDENT ACTION PLAN

# UPPER RUBY FIRE



For maps, evaluations, and IAPs Scan the QR Code!



Monday, August 26, 2024


0600-2000 Operational Period

WA-COF-001850

AIR	Daily	Approval
DNR	%	
USFS	%	

221-BUE  
P6 R6UC (0621) [P]

GROUND	Daily	Approval
DNR	%	
USFS	%	

<b>Incident Objectives</b>	1. Incident Name <b>Upper Ruby</b>	2. Date Prepared <b>8/25/2024</b>	3. Time Prepared <b>1200</b>
4. Operational Period (Date and Time) <b>8/26/2024 0600-2000</b>			
5. General Control Objectives for the Incident (include Alternatives) <ul style="list-style-type: none"> <li>• Provide for firefighter and public safety at all times. This includes the application of the "10 and 18", LCES, and the Risk Management Process.</li> <li>• Ensure structures and infrastructure are properly identified and mopped up around</li> <li>• Minimize acres burned.</li> <li>• Act professionally and in a manner that fosters good relationships with the public, private landowners, timber industry representatives, elected officials and other stakeholders.</li> <li>• Follow agency policies at all times and respect the policies of the host agency.</li> <li>• Maximize opportunities for cost savings without jeopardizing public or firefighter safety</li> <li>• Provide timely communications and accurate information as it becomes available.</li> </ul>			
6. Weather Forecast for Operational Period <b>See attached weather forecast</b>			
7. General Safety Message <ul style="list-style-type: none"> <li>• Provide for firefighter and public safety at all times.</li> <li>• Monitor compliance of 10 and 18 by all incident personnel.</li> <li>• Adhere to 2:1 work/rest ratio for all fire line personnel.</li> <li>• Aviation safety is high priority. Assess the risk against the benefit of the mission.</li> <li>• Ensure all assigned personnel understand emergency medical reporting &amp; transport procedures including locations of nearest emergency responders &amp; facilities.</li> </ul>			
8. Attachments (check if attached)			
ICS-202	9. Prepared by (PSC) <b>Jessica Walston</b>	10. Approved by (IC) 	

<b>ORGANIZATION ASSIGNMENT LIST</b>			
1. Incident Name		<b>Upper Ruby</b>	<b>9. OPERATIONS SECTION</b>
2. Date	8/25/2024	3. Time	1200
4. Operational Period		8/26/2024	0600-2000
<b>5. INCIDENT COMMANDER &amp; STAFF</b>		<b>a. Division A</b>	
Incident Commander	Andrew Stenbeck	Division Sup	Kyle Buckmiller
Safety Officer	Dan Garner	TFLD	
Safety Officer	Michael Hall	<b>b. Division M</b>	
Safety Officer	Richard Lidell	Division Sup	Todd Dormaier
Medical Officer	Richard Grajek	TFLD	
Information Officer	Gayne Sears	<b>c. Division Z</b>	
Information Officer (t)	Alison Mims	Division Sup	Brett Walker
<b>6. AGENCY REPRESENTATIVE</b>		TFLD	
<b>Agency</b>	<b>Name</b>	<b>d. EQUIPMENT</b>	
USFS	Luke Decker	Division Sup	Jake Morse TFL(t)
USFS (t)	Daniel Jordan	TFLD	
USFW	Cassie Roeder		
WA DNR	Pat Ryan		
<b>7. PLANNING SECTION</b>			
PSC	Jessica Walston		
PSC (t)	Brian Hansen		
SITL (t)	Eric Krausz		
GISS	Kat Russell		
ITSS	Kyle Wagner		
<b>10. FINANCE SECTION</b>			
Comms Manager	Shawn Pichette	Chief	Tina Paccereilli
COMT	Bob Leaming	PTRC	Laurie Babbitt
RADO	Kerry Nyhuis		
RADO	David Yoppini		
Trailer	509-389-2002		
<b>8. LOGISTICS SECTION</b>		<b>11. CONTACTS / OTHER INFORMATION</b>	
Chief	Joe Hoagland	NEWICC (509) 685-6900	
Chief (t)	Cole Shirley	wanec_expanded@firenet.gov	
		Prepared by (Resource Unit Leader)	
		Jessica Walston	

DIVISION ASSIGNMENT LIST			1. Branch		2. Division / Group			
3. Incident Name <b>Upper Ruby</b>			4. Operational Period Date: <b>8/26/2024</b> Time: <b>0600-2000</b>					
5. Operations Personnel								
Operations Chief		<i>Shawn Soliday</i>		Planning Operations		<i>Greg Anderson</i>		
Safety Officer		<i>Dan Garner</i>		Division/Group Supervisor		<i>Kyle Buckmiller</i>		
6. Resources Assigned this Period								
RO #	Strike Team/Task Force/Resource	Leader	# People	Contact (phone, radio freq, etc.)	EMT	LWD	Remarks	
O-7	TFLD	ANDREW TRIOLO	1	303-519-0302		9/4		
O-32	TFLD	JORDAN REEVES	1			9/27		
C-2	CRW1 - ROOSEVELT IHC	LARRY MONEY	21			9/4		
C-11	TRI CITIES FORESTRY	ENRIQUE BARADAS	20	509-400-1745		9/8		
C-12	CRW2 - KITTITAS 421	CHASE BREWER	20	509-856-5504		8/29		
E-50	ENG3 - MSF - E312							
E-51	ENG3 - RATTLESNAKE RIDGE 5295							
E-52	ENG3 - RATTLESNAKE RIDGE 4169							
O-14	SMOD - REPUBLIC	GABE GIDDINGS	15			9/1		
?	HEQB	STRADY	1	509-679-2314				
E-7	DZR3 - TIGER TRUCKING - G01116	ROGER HIATT	1	509-679-2314		9/4		
E-48	DZR2 - DEVALL LOGGING		1					
E-10	SKG2 - CHANTRY-50S645	AUBERT	2			9/4		
E-44	WTS2 - PEND ORIELLE TENDER	PAT MILLER	1					
O-34	SOFR	CHRIS WYROBECK	1					
O-46	EMPF	TIM RICHMOND	1					
			85					
7. Work Assignments								
8. Special Instructions								
E-11 AMB1 at Staging Area								
9. Communication Summary								
Function	Name	Mode	Frequency					
PRIMARY COMMAND	CMD 1	A	151.5125	N	186.2	158.4075	N	186.2
SECONDARY	CALSPL-E	A	171.475	N	146.2	164.625	N	103.5
ALPHA TAC	TAC 3	A	151.76	N	186.2	151.76	N	186.2
EQUIPMENT TAC	TAC 6	A	151.625	N	186.2	151.625	N	186.2
PRIMARY A/G	A/G PRIMARY	A	169.2	N	0	169.2	N	0
SECONDARY A/G	A/G SECONDARY	A	167.95	N	0	167.95	N	0
Prepared by (RESL)		Approved by (PSC) <b>Jessica Walston</b>			Date: 8/25/2024		Time: 1200	

DIVISION ASSIGNMENT LIST			1. Branch		2. Division / Group			
3. Incident Name <b>Upper Ruby</b>			4. Operational Period Date: <b>8/26/2024</b> Time: <b>0600-2000</b>					
5. Operations Personnel								
Operations Chief		<i>Shawn Soliday</i>		Planning Operations		<i>Greg Anderson</i>		
Safety Officer		<i>Dan Garner</i>		Division/Group Supervisor		<i>Todd Dormaier</i>		
6. Resources Assigned this Period								
RO #	Strike Team/Task Force/Resource	Leader	# People	Contact (phone, radio freq, etc.)	EMT	LWD	Remarks	
O-17	TFLD	SHANNON CLARK	1	360-770-4977		9/4		
O-15	TFLD(t)	ROB BARR	1	505-377-8312		9/4		
O-29	HEQB	NEWMEIER	1	360-359-8552		8/29		
C-1	CRW1-WOLF CREEK IHC	JEREMIAH COKE	20	541-391-1021		9/2		
C-4	CRW2 - T2C496 FRANCISCONEROS III	CHIPPERZ MARTINEZ (t)	20	509-400-1368 509-439-2908		9/4		
C-10	CRW2 - BLUE MTN	RAMOS / TORRES (t)	20	559-542-6605 971-332-0303		9/5		
O-19	RED RIVER MOD	ZAC CHRISTOPHER	9	505-469-5041		9/4		
E-18	ENG3 - ANGEL FIRE FD E3573	MICHEAL LUJAN	3	505-617-5828		9/4		
E-19	ENG6 - COCHITI FD BRUSH 83	DOMINICK ORTIZ	4	505-400-5821		9/4		
E-20	ENG6 - RUIDOSO FD 329203 - E 17	ALEC DAVIS	2	575-791-2053	2	9/4		
E-21	ENG3 - FARMINGTON FD E31	CODY HILL	3	970-560-0650	1	9/4	EMT(I)	
E-17	EXC2 - ANDERSON EXCAVATION INC	TODD ANDERSON	1	509-721-0168				
O-31	REMS	GREG NOWAK	2	509-993-4544	2		EMT(I)	
			87					
7. Work Assignments								
8. Special Instructions  <b>E-11 AMB1 at Staging Area</b>								
9. Communication Summary								
Function	Name	Mode	Frequency					
PRIMARY COMMAND	CMD 1	A	151.5125	N	186.2	158.4075	N	186.2
SECONDARY COMMAND / MIKE TAC	CALSPL-E	A	171.475	N	146.2	164.625	N	103.5
EQUIPMENT TAC	TAC 4	A	151.7	N	186.2	151.7	N	186.2
PRIMARY A/G	TAC 6	A	151.625	N	186.2	151.625	N	186.2
SECONDARY A/G	A/G PRIMARY	A	169.2	N	0	169.2	N	0
	A/G SECONDARY	A	167.95	N	0	167.95	N	0
Prepared by (RESL)		Approved by (PSC) <b>Jessica Walston</b>			Date: 8/25/2024		Time: 1200	

DIVISION ASSIGNMENT LIST			1. Branch		2. Division / Group				
3. Incident Name <b>Upper Ruby</b>			4. Operational Period Date: <b>8/26/2024</b> Time: <b>0600-2000</b>						
5. Operations Personnel									
Operations Chief			<i>Shawn Soliday</i>		Planning Operations		<i>Greg Anderson</i>		
Safety Officer			<i>Dan Garner</i>		Division/Group Supervisor		<i>Brett Walker</i>		
6. Resources Assigned this Period									
RO #	Strike Team/Task Force/Resource	Leader	# People	Contact (phone, radio freq, etc.)	EMT	LWD	Remarks		
C-3	CR2I - NW - NES - HIGHLANDS - DNR	SCHERTENLIEB	21	509-675-6452	2	9/1			
C-6	CRW1 - CRW1 - YUKON TERRITORIES	PIKE	20	867-334-3684	5	8/31			
O-30	HEQB	HARRIS	1	509-995-4373		9/4			
LOL	CREW 301	MORSE	20	509-71-5022	2				
E-8	FEL1 - AXSUS ENTERPRISES LLC - 133155		2						
E-34	SKG1 - TIGER TRUCKING INC.	HEATH	1	509-675-6903					
			65						
7. Work Assignments									
8. Special Instructions									
E-11 AMB1 at Staging Area									
9. Communication Summary									
Function	Name	Mode	Frequency						
PRIMARY COMMAND	CMD 1	A	151.5125	N	186.2	158.4075	N	186.2	
SECONDARY COMMAND /	CALSPL-E	A	171.475	N	146.2	164.625	N	103.5	
ZULU TAC	TAC 5	A	151.505	N	186.2	151.505	N	186.2	
EQUIPMENT TAC	TAC 6	A	151.625	N	186.2	151.625	N	186.2	
PRIMARY A/G	A/G PRIMARY	A	169.2	N	0	169.2	N	0	
SECONDARY A/G	A/G SECONDARY	A	167.95	N	0	167.95	N	0	
Prepared by (RESL)			Approved by (PSC)			Date:		Time:	
			Jessica Walston			8/25/2024		1200	

DIVISION ASSIGNMENT LIST			1. Branch		2. Division / Group			<b>EQUIPMENT</b>	
3. Incident Name <b>Upper Ruby</b>				4. Operational Period Date: <b>8/26/2024</b> Time: <b>0600-2000</b>					
<b>5. Operations Personnel</b>									
Operations Chief			<i>Shawn Soliday</i>		Planning Operations		<i>Greg Anderson</i>		
Safety Officer			<i>Dan Garner</i>		Division/Group Supervisor		<i>Jake Morse TFL(t)</i>		
<b>6. Resources Assigned this Period</b>									
RO #	Strike Team/Task Force/Resource	Leader	# People	Contact (phone, radio freq, etc.)	EMT	LWD	Remarks		
E-1	WTS2 - Axsus Enterprises		1						
E-3	WTS1-PECN 2-WT25		1						
E-12	WTS2 - ASPEN MOUNTAIN RESOURCES INC -		1						
E-13	WTS2 - ELIJAH NOEL - 164086		1						
E-24	WTS2 - MILLER TIMBER SERVICES, INC. - VE8393		1						
E-15	WTT2 - PEND OREILLE COUNTY FIRE DISTRICT #6 TENDER 43		1						
E-53	GRD2 - BRETZ 04854t		1						
O-6.7	GISS	TRENTON BARIBAULT	1						
			8						
<b>7. Work Assignments</b>									
<b>8. Special Instructions</b>									
E-11 AMB1 at Staging Area									
<b>9. Communication Summary</b>									
Function	Name	Mode	Frequency						
PRIMARY COMMAND	CMD 1	A	151.5125	N	186.2	158.4075	N	186.2	
SECONDARY COMMAND /	CALSPL-E	A	171.475	N	146.2	164.625	N	103.5	
EQUIPMENT TAC	TAC 6	A	151.625	N	186.2	151.625	N	186.2	
ALPHA TAC	TAC 3	A	151.76	N	186.2	151.76	N	186.2	
MIKE TAC	TAC 4	A	151.7	N	186.2	151.7	N	186.2	
ZULU TAC	TAC 5	A	151.505	N	186.2	151.505	N	186.2	
PRIMARY A/G	A/G PRIMARY	A	169.2	N	0	169.2	N	0	
SECONDARY A/G	A/G SECONDARY	A	167.95	N	0	167.95	N	0	
Prepared by (RESL)		Approved by (PSC)			Date:		Time:		
		<b>Jessica Walston</b>			8/25/2024		1200		

WEATHER	1. Incident Name Upper Ruby	2. Date Prepared 8/25/2024	3. Time Prepared 1200
.DISCUSSION...			
<p>Weak high pressure will allow for gradual warming with dry weather peaking Monday. A disturbance passing through Tuesday will bring increasing clouds Monday night followed up with rain showers, gusty winds, and cooler temperatures Tuesday.</p>			
.MONDAY...			
<p>Sky/weather.....Sunny then becoming partly sunny.  CWR.....0 percent.  LAL.....1.  Max temperature.....Around 69.  Min humidity.....40 percent.  Wind (20 ft).....Upslope/upvalley 0-3 mph.  Mixing height.....5500 ft AGL by afternoon.  Transport winds.....South 5 to 10 mph.  Haines Index.....2 Very Low.</p>			
.MONDAY NIGHT...			
<p>Sky/weather.....Increasing clouds.  Chance of rain showers through the night.  CWR.....Less than 20 percent.  LAL.....1.  Min temperature.....Around 51.  Max humidity.....67 percent.  Wind (20 ft).....Light winds.  Mixing height.....Lowering to near surface overnight.  Transport winds.....South 7 to 9 mph.  Haines Index.....3 Very Low.</p>			



**INCIDENT RADIO COMMUNICATIONS PLAN I-205**

1. INCIDENT NAME	UPPER RUBY	2. DATE/TIME PREPARED	8/25/2024	3. OPERATIONAL PERIOD DATE/TIME	8/26/2024
------------------	------------	-----------------------	-----------	---------------------------------	-----------

4. BASIC RADIO CHANNEL UTILIZATION											
Ch #	Function	Channel Name	Assignment	RX Freq	N/W	RX Tone/NAC	TX Freq	N/W	TX Tone/NAC	Mode Analog (A) Digital (D) Mixed (M)	Remarks
1	COMMAND	CMD 1	CMD	151.5125	N	186.2	158.4075	N	186.2	A	PRIMARY COMMAND
2	COMMAND	CMD 2	CMD	154.5275	N	186.2	158.4000	N	186.2	A	FUTURE USE
3	TAC	TAC 3	DIV A	151.7600	N	186.2	151.7600	N	186.2	A	ALPHA TAC
4	TAC	TAC 4	DIV M	151.7000	N	186.2	151.7000	N	186.2	A	MIKE TAC
5	TAC	TAC 5	DIV Z	151.5050	N	186.2	151.5050	N	186.2	A	ZULU TAC
6	TAC	TAC 6	EQUIP	151.6250	N	186.2	151.6250	N	186.2	A	EQUIPMENT TAC
7	TAC	TAC 7		154.3025	N	0.0	154.3025	N	0.0	A	UNASSIGNED
8	COMMAND	CALSPL-E	CMD	171.4750	N	146.2	164.6250	N	103.5	A	SECONDARY COMMAND / IA COMMAND
9	TAC	COL TAC	TAC	167.3750	N	0.0	167.3750	N	146.2	A	IA TAC
10	TAC	FS TAC	TAC	168.2000	N	0.0	168.2000	N	0.0	A	IA TAC
11	TAC	DNR TAC 1	TAC	151.3100	N	103.5	151.3100	N	103.5	A	IA TAC
12	AG	AG PRIMARY	AG P	169.2000	N	0.0	169.2000	N	0.0	A	PRIMARY AG
13	AG	AG SECONDARY	AG S	167.9500	N	0.0	167.9500	N	0.0	A	SECONDARY AG
14	AG	AG 51	AG IA	168.3125	N	0.0	168.3125	N	0.0	A	IA AG
15	MEDEVAC AG	VMED 29	MEDIVAC	155.3475	N	156.7	155.3475	N	156.7	A	AIR MEDICAL EVACUATION
16	AIRGUARD	AIRGUARD	EMERGENCY	168.6250	N	0.0	168.6250	N	110.9	A	EMERGENCY USE

5. Special Instructions:

6. I-205 Prepared By: Communications Unit Leader	Name: SHAWN PICHETTE	Signature: 
--	----------------------	--

# IAP

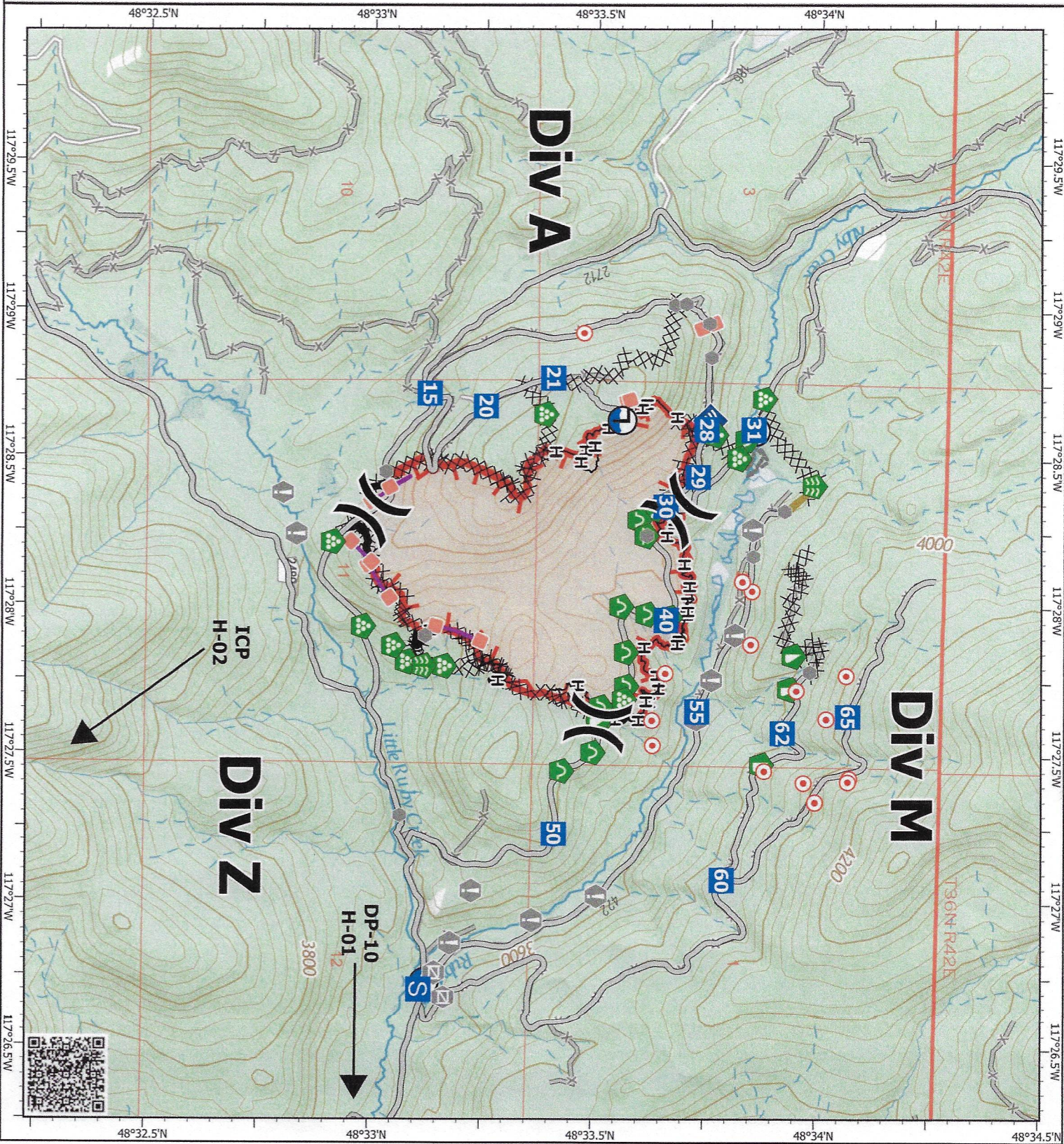
Upper Ruby  
WACOF-001850  
08/26/2024

283 acres at 08/25/2024 2005

- Division Break
- Drop Point
- Staging Area
- Hot Spot - Spot Fire
- Value at Risk
- Other
- Gate
- Bridge
- Stream Crossing
- Landing or Log Deck
- Dozer Push
- Culvert
- Internet Access
- Draft Site
- Completed Dozer Line
- Completed Hand Line
- Access Route
- Other
- Repair Line
- Retardant Drop
- Contained
- Uncontained
- Wildfire Daily Fire Perimeter



1:22,000 | TYPE 3 IMT NE3 | 8/25/2024 2100  
Acres from IR and GPS  
North American 1983 Datum, Lat/Long Grid





**PLEASE FOLLOW ONE WAY TRAFFIC SIGNAGE**

**Please camp in designated areas only, away from vehicles.**

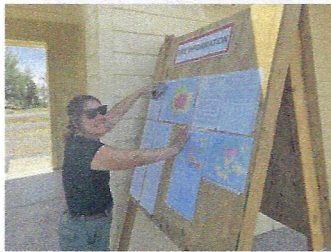
Showers: 0500-1000 & 1800-2230

Breakfast: 0530-0730

Dinner: 0700-2100

## Information Station

Fire Hire is here! Are you interested in working for the U.S. Forest Service next fire season in 2025? If so, apply NOW through September 24th.



# 2022 FIRE HIRE

## 4 PACIFIC NORTHWEST REGION



FIRE HIRE is the Forest Service process for hiring the majority of our fire positions at the GS-3 through GS-9 grade level. The Pacific Northwest Region is looking for committed, hardworking individuals for fire and fuels management positions on 17 National Forests in Oregon and Washington. The fire and aviation program is very rewarding and requires working safely as part of a team in a variety of specialized positions, including dispatch, engine crews, fuels technicians, handcrews, helitack, hotshot crews, smokejumpers, and prevention.

**APPLY ON [WWW.USAJOBS.GOV](http://WWW.USAJOBS.GOV)  
Between: Aug. 23rd- Sept. 24th**



**FOR MORE INFORMATION:** visit <https://tinyurl.com/2p84bh9z> or scan the QR code.

# Resource Protection Standards

## Dozer Standards

- Consult with REAFs if you have any concerns or questions.
- Dozer line maintained 50 feet from all creeks and water sources. Remaining line connected with hand line as needed.
- Dozers not to blade or walk across intermittent or active stream channels, wallows, wetlands, or other water sources if possible.
- Dozer line should use existing road templates if possible.

## Water Drafting Standards

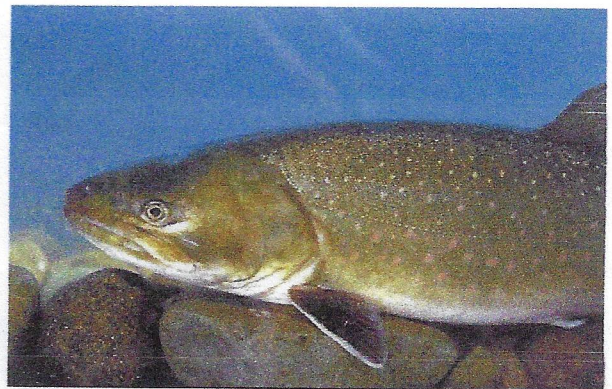
- Ensure all draft sites have fine screen mesh on intake hoses.
- Ensure containment aprons are under all pumps and gas.

## Control Line

- If timber is cut for machine control line ensure it is felled/arranged in a manner so it can be removed for later decking and sale.

## Ruby Fire Specifics

- Fire retardant avoidance areas located in Fieldmaps.
- Ruby Creek is Critical Habitat for Bull trout, an ESA listed species.
- Numerous archeology sites in proximity to fire. All sites have been flagged in pink flagging. Keep control lines out of sites. Please consult with REAFs if fire perimeter is expected to impact sites.



## Turnback Standards and Fire Suppression Repair 2024

These standards can be adjusted and modified as an incident progresses but are intended to give the IMT both a starting point for planning and the Forest's desired result. The Forest recognizes that during the timeframe of an incident, an IMT may not accomplish all desired results but should move in a direction that allows the incoming team or Forest to achieve the desired results with available resources. If a desired result is not met, the current team will provide progress and estimated completion at current resource staffing. Mop-up specifications and rehabilitation standards apply only on NFS lands.

### Mop-Up Specifications

Mop-up along and inside the fire perimeter to a distance that is adequate to ensure the perimeter is secure to prevent the fire from escaping or spotting across existing containment lines based on current and predicted weather. **As this fire is in an active timber sale area and in heavy logging slash, mop-up specifications will be focused on a minimum of 66' within the active timber sale area.**

Spot fires outside the control lines will be mopped up to ensure the perimeter is secure to prevent the fire from escaping or spotting across existing containment lines, a route to them will be flagged, and the perimeter of spots mapped.

Ribbon hazard trees that are unsafe to remove and share that information with the appropriate personnel to get them mapped for future mitigation.

As mop-up specifications are met on a Division, Operations will define the need and develop a plan for the resources that are left in place for future contingency actions. Show map locations, as necessary, of equipment and supplies remaining on the fire.

To reduce hazards to firefighters during final mop-up, fall snags that pose "imminent" threat to mop-up operations and along open roads, trails, and recreation areas within the fire area.

For structures and sensitive resources within the interior of the fireline, mop-up to ensure that there will be no future effects from the fire.

Notify READ if a cultural site is found during mop-up.

# FIRE SUPPRESSION REPAIR STANDARDS

## COLVILLE NATIONAL FOREST

2024

All standards may be supplemented or modified with specification from the lead READ. The expectation is that the IMT will work closely with local Resource Advisors during suppression repair. Type 3 excavators are preferred for repair work and maybe requested or retained on an incident if needed for repair work.

### General Actions

All suppression features, including but not limited to the following, would be marked by GPS and GIS files given to the home unit.

- constructed fire lines (hand and dozer)
- resources left in place
- roads that were opened/closed
- pullout locations
- safety zones
- helispots
- drop points
- water sources
- other disturbed areas

Leave flagging in place which marks hazards, resource concerns, etc.

Remove all supplies and equipment not needed for contingency.

Remove all garbage associated with fire suppression efforts (pallets, boxes, lunch wrappers, hose bands, unneeded signs, etc.) from the fire area, staging areas, and travel routes. Human waste will be buried.

### Range Developments

- Fences/gates, range developments, cattle guards, etc. damaged or destroyed by suppression activities including burnout operations or dozer line will be marked by GPS and GIS files given to the home unit.
- Stock ponds used for drafting water will be brought back to pre-fire levels. These locations will be provided by the home unit.

### Streams & Water Sources

- All drainages (intermittent and perennial), meadows, and springs – remove all soil, slash, and other debris that has been pushed into these areas. Streams should match natural upstream and downstream conditions.
- All water drafting sites (streams and lakes) – return area to pre-fire condition.

## Roads & Contingency Lines

- Return road conditions to serviceable condition. A list of work items such as water bars, blading, surfacing, etc. will be provided by the home unit.
- Trees cut along roads for contingency lines will be decked.
- Excessive slash will be dealt with on a site-specific basis in coordination with the resource advisor.

## Handline

- Angle drainage into green when possible.
- Remove berms.
- Remove any brush/slash from drainages that was placed there during the fire.
- Scatter brush/slash back onto the hand line. Water bars not greater than 45° angle, and placed every 25'-50' with 6" berm max.
- Ensure end of water bar is open and clear of obstructions.

## Dozer line/4x4 roads

- Disguise or block access to dozer line when possible.
- Ensure stream crossings are open to allow water flow down the channel. Streams should match natural upstream and downstream conditions.
- Knock down berms on all dozer lines; identify those which may be needed longer term. Maintain berms as needed for cultural resource protection.
- Height – 18" compacted berm.
- Pull back concentrations of slash, debris, fallen trees, and uprooted stumps. Place logs and fallen trees across slope; do not buck or limb.
- Water Bars – ensure end is open and clear of obstructions.
  - Do not construct waterbars within cultural resource boundaries (sites will need to be identified by district).
  - Angle drainage into the green when possible and waterbar angle determined by percent slope of fireline or road plus 5 (not steeper than 45°).
  - Depth – Construct water bars so the bottom of the ditch is 6" into solid soil. Do not construct any water bars completely from loose soil
  - Water Bar Spacing –

<u>Slope Gradient %</u>	<u>Feet</u>
1-14	none
15-20	250
21-30	150
31-40	75
41+*	30

\*May require hand work or an excavator.



# Safety Message

**Incident:**  
Upper Ruby

**Date:**  
August 26, 2024

**Time:**  
Day Shift

**Major Hazard and Risk:**

Transportation  
Heavy Equipment  
Fire Weakened Trees/Snags

Implement LCES prior to operational engagement.

**Transportation:** Drive defensively, keep windshields clean, narrow roads w/very soft shoulders, watch out for weekend traffic on Highway 20, **ALWAYS USE BACKERS!**

**Heavy Equipment:** Always use caution when heavy equipment is in use, stay well clear, especially in timber, do not work below.

**Fire Weakened Trees/Snags:** Assess, identify, communicate, isolate.

**Air Resources:** Stay alert, keep well clear of drop area.

**Bees, Bees, Bees!** Warn others, ID those with allergies, “Be” careful when eating.

**Fatigue/Illness:** Prevent illnesses with frequent hand washing, cover your cough and hydrate.

**Mop Up:** Use appropriate PPE, Flag Hazard Trees, Watch for Stump Holes.

**Review the Medical Plan, BEFORE you need it.**

***Welcome Safety Mike Cook and Safety Brad Lidell!***

Dan Garner SOFR







1. Incident/Project Name		2. Operational Period					
Upper Ruby		8/26/24 Day Shift					
3. Ambulance Services							
Name	Complete Address	Phone & EMS Frequency	Advanced Life Support (ALS)				
PO County FD #2	Blueslide/Tiger/Metaline Falls, WA	911/509-442-2311	<input checked="" type="checkbox"/> Yes	<input type="checkbox"/> No			
PO County FD #4	Dalkena, WA	911/509-447-2476	<input type="checkbox"/> Yes	<input checked="" type="checkbox"/> No			
Kalispel Tribal FD	Usk, WA	911	<input type="checkbox"/> Yes	<input checked="" type="checkbox"/> No			
South PO Fire and Rescue	Several locations in South PO County	911/509-447-5305	<input type="checkbox"/> Yes	<input checked="" type="checkbox"/> No			
4. Air Ambulance Services							
Name	Phone	Type of Aircraft & Capability					
Lifeflight Network, Spokane, WA	Call NEWICC / 800-232-0911	Advanced Life Support					
Airlift Northwest	Call NEWICC/	Advanced Life Support					
Fairchild AFB, Airway Hieghts, WA	Call NEWICC / 509-247-4051	Advanced Life Support					
Spokane County Sheriff	Call NEWICC/ 509-532-8900	Hoist ship, Advance Life Support,additional air ambulance for transport					
5. Hospitals							
Name Complete Address	GPS Datum – WGS 84 Coordinate Standard Degrees Decimal Minutes DD° MM.MMM' N - Lat DD° MM.MMM' W - Long		Travel Time Air Gnd	Phone	Helipad		Level of Care Facility
	Lat:	Long:			VHF:	<input checked="" type="checkbox"/> Yes	
Newport Hospital; 714 Pine Street; Newport, WA	N48 10.93	W117 02.96		509-447-7928	<input checked="" type="checkbox"/> Yes	<input type="checkbox"/> No	Level 4 Trama Center
Providence Sacred Heart; 101 W 8th; Spokane, WA	N47 38.95	W117 24.78		509-474-3131	<input checked="" type="checkbox"/> Yes	<input type="checkbox"/> No	Level 2 Trama Center
Providence Holy Family; 5633 N. Lidgerwood, Spokane, WA	N47 42.57	W117 24.4		509-482-0111	<input checked="" type="checkbox"/> Yes	<input type="checkbox"/> No	Level 3 Trama Center
Deaconess Hospital; 800 W 5th Avenue, Spokane, WA	N47 39.1	W117 25.46		509-458-5800	<input checked="" type="checkbox"/> Yes	<input type="checkbox"/> No	Level 3 Trama Center
Harborview Medical Center; 325 9th Avenue, Seattle, WA	N47 36.1	W121 19.3		206-744-3000 Emergency # 206-744-4074	<input checked="" type="checkbox"/> Yes	<input type="checkbox"/> No	Level 1 Trama Center Burn Center
	Lat:				<input type="checkbox"/> Yes	<input type="checkbox"/> No	
	Long:						
	VHF:						

6. Division   Branch		Area Location Capability		
<p>Identify crew EMTs on the line for each Division prior to engaging. In case of urgent situation, notify your supervisor and follow the MEDICAL INCIDENT REPORT "ICS 206" procedure on pages 118-120 in the 2022 IRPG. Notify operations of needs and location on command channel. Operations will notify NEWICC and base camp. Minimize radio traffic and maintain situational awareness.</p>				
<b>Div A</b>	EMS Responders &	Medic Richmond		
	Equipment Available on	ALS, AED, O2,		
	Medical Emergency	Command 1 (CMD) 1Secondary Command (CAL SPL E)		
	ETA Ambo to Hospital	GROUND: 60Min AIR: 20-45 min to Hospital		
	Ground:	Ambo at staging		
	Approved Helispot:	Drop Point: 10 Helispot: 1		
	Lat:	48 33.084'N		
	Long:	117 24.611'W		
<b>Div M/ Z</b>	EMS Responders &	REM 1		
	Equipment Available on	BLS, Vehicle extrication equipment, Rope rescue		
	Medical Emergency	Command 1 (CMD) 1Secondary Command (CAL SPL E)		
	ETA Ambo to Hospital	GROUND: 60Min AIR: 20-45 min to Hospital		
	Ground:	Ambo at staging		
	Approved Helispot:	Drop Point: 10 Helispot: 1		
	Lat:	48 33.084'N		
	Long:	117 24.611'W		
7. Name & Location				
<b>Staging Area</b>	EMS Responders &	Ambo 1		
	Equipment Available on	ALS, AED, O2,		
	Medical Emergency Channel:	Command 1 (CMD) Secondary Command (CAL SPL E)		
	ETA for Ambo to Hospital	GROUND: 60Min AIR: 20-45 min to Hospital		
	Ground:	Staging Area		
	Approved Helispot:	Drop Point: 10 Helispot: 1		
	Lat:	48 33.084'N		
	Long:	117 24.611'W		
<b>Basecamp</b>	EMS Responders &	MEDL-(T) Richard Grajek		
	Equipment Available on	BLS first aid care		
	Medical Emergency Channel:	Command 1 (CMD) Secondary Command (CAL SPL E)		
	ETA for Ambo to Hospital	GROUND: 60Min AIR: 20-45 min to Hospital		
	Air:	Local Air Medical Transport		
	Ground:	Local EMS Transport		
	Approved Helispot:	Helispot: 2		
	Lat:	48 20.778'N		
Long:	117 17.047'W			
8. Prepared By (Medical Unit Leader)		9. Date/Time	10. Reviewed By (Safety Officer)	11. Date/Time
Richard Grajek MEDL-(T) <i>R. Grajek</i>		11:00 8/25/24	Dan Garner SOFR <i>Dan Garner</i>	12:00 8/25/24

# MEDICAL PLAN (ICS 206 WF)

Controlled Unclassified Information//Basic

## Medical Incident Report

**FOR A NON-EMERGENCY INCIDENT, WORK THROUGH CHAIN OF COMMAND TO REPORT AND TRANSPORT INJURED PERSONNEL AS NECESSARY.**

**FOR A MEDICAL EMERGENCY: IDENTIFY ON SCENE INCIDENT COMMANDER BY NAME AND POSITION AND ANNOUNCE "MEDICAL EMERGENCY" TO INITIATE RESPONSE FROM IMT COMMUNICATIONS/DISPATCH.**

**Use the following items to communicate situation to communications/dispatch.**

**1. CONTACT COMMUNICATIONS / DISPATCH** (Verify correct frequency prior to starting report)

*Ex: "Communications, Div. Alpha. Stand-by for Emergency Traffic."*

**2. INCIDENT STATUS:** Provide incident summary (including number of patients) and command structure.

*Ex: "Communications, I have a Red priority patient, unconscious, struck by a falling tree. Requesting air ambulance to Forest Road 1 at (Lat./Long.) This will be the Trout Meadow Medical, IC is TFLD Jones. EMT Smith is providing medical care."*

Severity of Emergency / Transport Priority	<input type="checkbox"/> <b>RED / PRIORITY 1 Life or limb threatening injury or illness. Evacuation need is IMMEDIATE</b> <i>Ex: Unconscious, difficulty breathing, bleeding severely, 2<sup>o</sup> – 3<sup>o</sup> burns more than 4 palm sizes, heat stroke, disoriented.</i> <input type="checkbox"/> <b>YELLOW / PRIORITY 2 Serious Injury or illness. Evacuation may be DELAYED if necessary.</b> <i>Ex: Significant trauma, unable to walk, 2<sup>o</sup> – 3<sup>o</sup> burns not more than 1-3 palm sizes.</i> <input type="checkbox"/> <b>GREEN / PRIORITY 3 Minor Injury or illness. Non-Emergency transport</b> <i>Ex: Sprains, strains, minor heat-related illness.</i>	
Nature of Injury or Illness & Mechanism of Injury		Brief Summary of Injury or Illness <i>(Ex: Unconscious, Struck by Falling Tree)</i>
Transport Request		Air Ambulance / Short Haul/Hoist Ground Ambulance / Other
Patient Location		Descriptive Location & Lat. / Long. (WGS84)
Incident Name		Geographic Name + "Medical" <i>(Ex: Trout Meadow Medical)</i>
On-Scene Incident Commander		Name of on-scene IC of Incident within an Incident <i>(Ex: TFLD Jones)</i>
Patient Care		Name of Care Provider <i>(Ex: EMT Smith)</i>

**3. INITIAL PATIENT ASSESSMENT:** Complete this section for each patient as applicable (start with the most severe patient)

Patient Assessment: See IRPG page 106

Treatment:

**4. TRANSPORT PLAN:**

Evacuation Location (if different): (Descriptive Location (drop point, intersection, etc.) or Lat. / Long.) Patient's ETA to Evacuation Location:

Helispot / Extraction Site Size and Hazards:

**5. ADDITIONAL RESOURCES / EQUIPMENT NEEDS:**

*Example: Paramedic/EMT, Crews, Immobilization Devices, AED, Oxygen, Trauma Bag, IV/Fluid(s), Splints, Rope rescue, Wheeled litter, HAZMAT, Extrication*

**6. COMMUNICATIONS: Identify State Air/Ground EMS Frequencies and Hospital Contacts as applicable**

Function	Channel Name/Number	Receive (RX)	Tone/NAC *	Transmit (TX)	Tone/NAC *
COMMAND					
AIR-TO-GRND					
TACTICAL					

**7. CONTINGENCY: Considerations:** If primary options fail, what actions can be implemented in conjunction with primary evacuation method? Be thinking ahead.

**8. ADDITIONAL INFORMATION:** Updates/Changes, etc.

**REMEMBER:** Confirm ETA's of resources ordered. Act according to your level of training. Be Alert. Keep Calm. Think Clearly. Act Decisively.