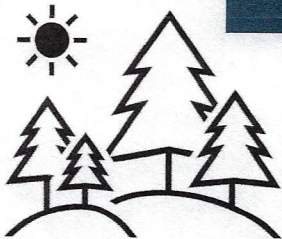


# INCIDENT ACTION PLAN

# UPPER RUBY FIRE



For maps, evaluations, and  
IAPs Scan the QR Code!



Tuesday, August 27, 2024


0600-2000 Operational Period

WA-COF-001850

AIR	Daily	Approval
DNR	%	
USFS	%	

221-BUE  
P6 R6UC (0621) [P]

GROUND	Daily	Approval
DNR	%	
USFS	%	

<b>Incident Objectives</b>	1. Incident Name <b>Upper Ruby</b>	2. Date Prepared <b>8/26/2024</b>	3. Time Prepared <b>1200</b>
4. Operational Period (Date and Time) <b>8/27/2024</b> <b>0600-2000</b>			
5. General Control Objectives for the Incident (include Alternatives)			
<ul style="list-style-type: none"> <li>• Provide for firefighter and public safety at all times. This includes the application of the "10 and 18", LCES, and the Risk Management Process.</li> <li>• Ensure structures and infrastructure are properly identified and mopped up around</li> <li>• Minimize acres burned.</li> <li>• Act professionally and in a manner that fosters good relationships with the public, private landowners, timber industry representatives, elected officials and other stakeholders.</li> <li>• Follow agency policies at all times and respect the policies of the host agency.</li> <li>• Maximize opportunities for cost savings without jeopardizing public or firefighter safety</li> <li>• Provide timely communications and accurate information as it becomes available.</li> </ul>			
6. Weather Forecast for Operational Period			
<b>See attached weather forecast</b>			
7. General Safety Message			
<ul style="list-style-type: none"> <li>• Provide for firefighter and public safety at all times.</li> <li>• Monitor compliance of 10 and 18 by all incident personnel.</li> <li>• Adhere to 2:1 work/rest ratio for all fire line personnel.</li> <li>• Aviation safety is high priority. Assess the risk against the benefit of the mission.</li> <li>• Ensure all assigned personnel understand emergency medical reporting &amp; transport procedures including locations of nearest emergency responders &amp; facilities.</li> </ul>			
8. Attachments (check if attached)			
ICS-202	9. Prepared by (PSC) <b>Jessica Walston</b>	10. Approved by (IC) 	

<b>ORGANIZATION ASSIGNMENT LIST</b>			
1. Incident Name		<b>Upper Ruby</b>	
2. Date 8/26/2024		3. Time 1200	
4. Operational Period 8/27/2024		0600-2000	
<b>5. INCIDENT COMMANDER &amp; STAFF</b>		<b>a. Division A</b>	
Incident Commander	Andrew Stenbeck	Division Sup	Kyle Buckmiller
Safety Officer	Brad Lidell	TFLD	
Safety Officer	Mike Cook	<b>b. Division M</b>	
		Division Sup	Todd Dormaier
Medical Officer	Richard Grajek	TFLD	
Information Officer	Guy Gifford	<b>c. Division Z</b>	
Information Officer (t)	Alison Mims	Division Sup	Brett Walker
<b>6. AGENCY REPRESENTATIVE</b>		TFLD	
<b>Agency</b>	<b>Name</b>	<b>d. EQUIPMENT</b>	
USFS	Luke Decker	Division Sup	Jake Morse TFL(t)
USFS (t)	Marshell Moy	TFLD	
USFW	Cassie Roeder		
WA DNR	Pat Ryan		
<b>7. PLANNING SECTION</b>			
PSC (t)	Brian Hansen		
SITL (t)	Eric Krausz		
GISS	Kat Russell		
ITSS	Kyle Wagner		
		<b>10. FINANCE SECTION</b>	
Comms Manager	Shawn Pichette	Chief	Tina Paccereilli
COMT	Bob Leaming	PTRC	Laurie Babbitt
RADO	Kerry Nyhuis		
RADO	David Yoppini		
Trailer	509-389-2002		
<b>8. LOGISTICS SECTION</b>		<b>11. CONTACTS / OTHER INFORMATION</b>	
Chief	Matt Lougy	NEWICC (509) 685-6900	
Chief (t)	Cole Shirley	wanec_expanded@firenet.gov	
		Prepared by (Resource Unit Leader)	
		Jessica Walston	

DIVISION ASSIGNMENT LIST			1. Branch		2. Division / Group			
3. Incident Name <b>Upper Ruby</b>			4. Operational Period Date: <b>8/27/2024</b> Time: <b>0600-2000</b>					
5. Operations Personnel								
Operations Chief			<i>Shawn Soliday</i>		Planning Operations		<i>Greg Anderson</i>	
Safety Officer			<i>Brad Lidell</i>		Division/Group Supervisor		<i>Kyle Buckmiller</i>	
6. Resources Assigned this Period								
RO #	Strike Team/Task Force/Resource	Leader	# People	Contact (phone, radio freq, etc.)	EMT	LWD	Remarks	
O-7	TFLD	ANDREW TRIOLO	1	303-519-0302		9/4		
O-32	TFLD	JORDAN REEVES	1			8/27		
C-2	CRW1 - ROOSEVELT IHC	LARRY MONEY	21			9/4		
C-11	CRW2 - TRI CITIES FORESTRY	ENRIQUE BARADAS	20	509-400-1745		9/8		
C-12	CRW2 - KITTITAS 421	CHASE BREWER	20	509-856-5504		8/29		
E-50	ENG3 - MSF - E312					9/7		
E-51	ENG3 - RATTLESNAKE RIDGE 5295					9/7		
E-52	ENG3 - RATTLESNAKE RIDGE 4169					9/7		
O-14	SMOD - REPUBLIC	GABE GIDDINGS	15			9/1		
O-30	HEQB	Harris	1	509-995-4373		9/4		
E-54	KALISPEL BRUSH 1	KEN PERALTA	3	509-671-1403				
E-7	DZR3 - TIGER TRUCKING - G01116	ROGER HIATT	1	509-679-2314		9/4		
E-10	SKG2 - CHANTRY-50S645	AUBERT	2			9/4		
E-44	WTS2 - PEND ORIELLE TENDER	PAT MILLER	1			9/5		
O-46	EMPF	TIM RICHMOND	1			9/1		
			86					
7. Work Assignments								
8. Special Instructions								
E-11 AMB1 at Staging Area								
9. Communication Summary								
Function	Name	Mode	Frequency					
PRIMARY COMMAND	CMD 1	A	151.5125	N	186.2	158.4075	N	186.2
SECONDARY	CALSPL-E	A	171.475	N	146.2	164.625	N	103.5
ALPHA TAC	TAC 3	A	151.76	N	186.2	151.76	N	186.2
EQUIPMENT TAC	TAC 6	A	151.625	N	186.2	151.625	N	186.2
PRIMARY A/G	A/G PRIMARY	A	169.2	N	0	169.2	N	0
SECONDARY A/G	A/G SECONDARY	A	167.95	N	0	167.95	N	0
Prepared by (RESL) Brian Hansen		Approved by (PSC) Jessica Walston			Date: 8/26/2024		Time: 1200	

DIVISION ASSIGNMENT LIST			1. Branch		2. Division / Group			<b>M</b>	
3. Incident Name <b>Upper Ruby</b>				4. Operational Period Date: <b>8/27/2024</b> Time: <b>0600-2000</b>					
5. Operations Personnel									
Operations Chief			<i>Shawn Soliday</i>		Planning Operations			<i>Greg Anderson</i>	
Safety Officer			<i>Brad Lidell</i>		Division/Group Supervisor			<i>Todd Dormaier</i>	
6. Resources Assigned this Period									
RO #	Strike Team/Task Force/Resource	Leader	# People	Contact (phone, radio freq, etc.)	EMT	LWD	Remarks		
O-17	TFLD	SHANNON CLARK	1	360-770-4977		9/4			
O-15	TFLD(t)	ROB BARR	1	505-377-8312		9/4			
C-1	CRW1-WOLF CREEK IHC	JEREMIAH COKE	20	541-391-1021		9/2			
C-4	CRW2 - T2C496 FRANCISCONEROS III	CHIPPERZ MARTINEZ (t)	20	509-400-1368 509-439-2908		9/4			
C-10	CRW2 - BLUE MTN	RAMOS / TORRES (t)	20	559-542-6605 971-332-0303		9/5			
O-19	RED RIVER MOD	ZAC CHRISTOPHER	9	505-469-5041		9/4			
E-18	ENG3 - ANGEL FIRE FD E3573	MICHEAL LUJAN	3	505-617-5828		9/4			
E-19	ENG6 - COCHITI FD BRUSH 83	DOMINICK ORTIZ	4	505-400-5821		9/4			
E-20	ENG6 - RUIDOSO FD 329203 - E 17	ALEC DAVIS	2	575-791-2053	2	9/4			
E-21	ENG3 - FARMINGTON FD E31	CODY HILL	3	970-560-0650	1	9/4	EMT(I)		
O-29	HEQB	NEWMEIER	1	360-359-8552		8/29			
E-17	EXC2 - ANDERSON EXCAVATION INC	TODD ANDERSON	1	509-721-0168		9/5			
O-31	REMS	GREG NOWAK	2	509-993-4544	2	8/27	EMT(I)		
			87						
7. Work Assignments									
8. Special Instructions									
E-11 AMB1 at Staging Area									
9. Communication Summary									
Function	Name	Mode	Frequency						
PRIMARY COMMAND	CMD 1	A	151.5125	N	186.2	158.4075	N	186.2	
SECONDARY COMMAND / MIKE TAC	CALSPL-E TAC 4	A	171.475 151.7	N	146.2 186.2	164.625 151.7	N	103.5 186.2	
EQUIPMENT TAC	TAC 6	A	151.625	N	186.2	151.625	N	186.2	
PRIMARY A/G	A/G PRIMARY	A	169.2	N	0	169.2	N	0	
SECONDARY A/G	A/G SECONDARY	A	167.95	N	0	167.95	N	0	
Prepared by (RESL) Brian Hansen			Approved by (PSC) Jessica Walston			Date: 8/26/2024		Time: 1200	

DIVISION ASSIGNMENT LIST			1. Branch		2. Division / Group				
3. Incident Name <b>Upper Ruby</b>			4. Operational Period Date: <b>8/27/2024</b> Time: <b>0600-2000</b>						
5. Operations Personnel									
Operations Chief			<i>Shawn Soliday</i>		Planning Operations		<i>Greg Anderson</i>		
Safety Officer			<i>Brad Lidell</i>		Division/Group Supervisor				
6. Resources Assigned this Period									
RO #	Strike Team/Task Force/Resource	Leader	# People	Contact (phone, radio freq, etc.)	EMT	LWD	Remarks		
C-3	CR21 - NW - NES - HIGHLANDS - DNR	SCHERTENLIEB	21	509-675-6452	2	9/1			
C-6	CRW1 - CRW1 - YUKON TERRITORIES	PIKE	20	867-334-3684	5	8/31			
E-34	SKG1 - TIGER TRUCKING INC.	HEATH	1	509-675-6903		9/4			
			42						
7. Work Assignments									
8. Special Instructions									
E-11 AMB1 at Staging Area									
9. Communication Summary									
Function	Name	Mode	Frequency						
PRIMARY COMMAND	CMD 1	A	151.5125	N	186.2	158.4075	N	186.2	
SECONDARY COMMAND / ZULU TAC	CALSPL-E	A	171.475	N	146.2	164.625	N	103.5	
EQUIPMENT TAC	TAC 5	A	151.505	N	186.2	151.505	N	186.2	
PRIMARY A/G	TAC 6	A	151.625	N	186.2	151.625	N	186.2	
SECONDARY A/G	A/G PRIMARY	A	169.2	N	0	169.2	N	0	
	A/G SECONDARY	A	167.95	N	0	167.95	N	0	
Prepared by (RESL) Brian Hansen			Approved by (PSC) Jessica Walston			Date: 8/26/2024		Time: 1200	

DIVISION ASSIGNMENT LIST			1. Branch		2. Division / Group			<b>EQUIPMENT</b>	
3. Incident Name <b>Upper Ruby</b>				4. Operational Period Date: <b>8/27/2024</b> Time: <b>0600-2000</b>					
<b>5. Operations Personnel</b>									
Operations Chief			<i>Shawn Soliday</i>		Planning Operations		<i>Greg Anderson</i>		
Safety Officer			<i>Brad Lidell</i>		Division/Group Supervisor		<i>Jake Morse TFL(t)</i>		
<b>6. Resources Assigned this Period</b>									
RO #	Strike Team/Task Force/Resource	Leader	# People	Contact (phone, radio freq, etc.)	EMT	LWD	Remarks		
E-1	WTS2 - Axsus Enterprises		1			9/2			
E-3	WTS1-PECN 2-WT25		1			9/3			
E-12	WTS2 - ASPEN MOUNTAIN RESOURCES INC -		1			9/5			
E-13	WTS2 - ELIJAH NOEL - 164086		1			9/4			
E-24	WTS2 - MILLER TIMBER SERVICES, INC. - VE8393		1			9/2			
E-15	WTT2 - PEND OREILLE COUNTY FIRE DISTRICT #6 TENDER 43		1			9/4			
E-53	GRD2 - BRETZ 04854t		1			9/7			
O-6.7	GISS	TRENTON BARIBAULT	1			9/1			
			8						
<b>7. Work Assignments</b>									
<b>8. Special Instructions</b>									
E-11 AMB1 at Staging Area									
<b>9. Communication Summary</b>									
Function	Name	Mode	Frequency						
PRIMARY COMMAND	CMD 1	A	151.5125	N	186.2	158.4075	N	186.2	
SECONDARY COMMAND /	CALSPL-E	A	171.475	N	146.2	164.625	N	103.5	
EQUIPMENT TAC	TAC 6	A	151.625	N	186.2	151.625	N	186.2	
ALPHA TAC	TAC 3	A	151.76	N	186.2	151.76	N	186.2	
MIKE TAC	TAC 4	A	151.7	N	186.2	151.7	N	186.2	
ZULU TAC	TAC 5	A	151.505	N	186.2	151.505	N	186.2	
PRIMARY A/G	A/G PRIMARY	A	169.2	N	0	169.2	N	0	
SECONDARY A/G	A/G SECONDARY	A	167.95	N	0	167.95	N	0	
Prepared by (RESL) Brian Hansen		Approved by (PSC) Jessica Walston			Date: 8/26/2024		Time: 1200		

**INCIDENT RADIO COMMUNICATIONS PLAN I-205**

1. INCIDENT NAME	2. DATE/TIME PREPARED	3. OPERATIONAL PERIOD DATE/TIME
<b>UPPER RUBY</b>	8/26/2024	8/27/2024

4. BASIC RADIO CHANNEL UTILIZATION											
Ch #	Function	Channel Name	Assignment	RX Freq	N/W	RX Tone/NAC	TX Freq	N/W	TX Tone/NAC	Mode Analog (A) Digital (D) Mixed (M)	Remarks
1	COMMAND	CMD 1	CMD	151.5125	N	186.2	158.4075	N	186.2	A	PRIMARY COMMAND
2	COMMAND	CMD 2	CMD	154.5275	N	186.2	156.4000	N	186.2	A	FUTURE USE
3	TAC	TAC 3	DIV A	151.7600	N	186.2	151.7600	N	186.2	A	ALPHA TAC
4	TAC	TAC 4	DIV M	151.7000	N	186.2	151.7000	N	186.2	A	MIKE TAC
5	TAC	TAC 5	DIV Z	151.5050	N	186.2	151.5050	N	186.2	A	ZULU TAC
6	TAC	TAC 6	EQUIP	151.6250	N	186.2	151.6250	N	186.2	A	EQUIPMENT TAC
7	TAC	TAC 7		154.3025	N	0.0	154.3025	N	0.0	A	UNASSIGNED
8	COMMAND	CALSPL-E	CMD	171.4750	N	146.2	164.6250	N	103.5	A	SECONDARY COMMAND / IA COMMAND
9	TAC	COL TAC	TAC	167.3750	N	0.0	167.3750	N	146.2	A	IA TAC
10	TAC	FS TAC	TAC	168.2000	N	0.0	168.2000	N	0.0	A	IA TAC
11	TAC	DNR TAC 1	TAC	151.3100	N	103.5	151.3100	N	103.5	A	IA TAC
12	AG	AG PRIMARY	AG P	169.2000	N	0.0	169.2000	N	0.0	A	PRIMARY AG
13	AG	AG SECONDARY	AG S	167.9500	N	0.0	167.9500	N	0.0	A	SECONDARY AG
14	AG	AG 51	AG IA	168.3125	N	0.0	168.3125	N	0.0	A	IA AG
15	MEDEVAC AG	VMED 29	MEDIVAC	155.3475	N	156.7	155.3475	N	156.7	A	AIR MEDICAL EVACUATION
16	AIRGUARD	AIRGUARD	EMERGENCY	168.6250	N	0.0	168.6250	N	110.9	A	EMERGENCY USE

5. Special Instructions: Communication Trailer Phone Number 24hrs 1-509-389-2002

6. I-205 Prepared By: Communications Unit Leader Name: **SHAWN PICHETTE** Signature: 



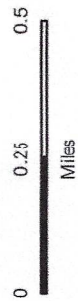
WEATHER	1. Incident Name Upper Ruby	2. Date Prepared 8/26/2024	3. Time Prepared 1200
.DISCUSSION...			
...GUSTY SOUTHWEST WINDS TUESDAY WITH A WIND SHIFT TO WEST IN THE AFTERNOON...			
<p>Prior to the arrival of a vigorous cold front there will be a 40 percent chance of showers Tuesday morning. Along and behind the front look for a wind shift from southwest to west and a 20 percent chance of showers in the afternoon. Overnight temperatures will be quite chilly Tuesday night and again Wednesday night with lows near 40 at the elevation of the fire. Nearby valleys will dip into the mid to upper 30s. By the weekend, afternoon temps will be in the 90s in the valleys and upper 70s to near 80 at the elevation of the fire.</p>			
.TUESDAY...			
<p>Sky/weather.....Mostly cloudy with a 40 percent chance of showers in the morning. Partly cloudy with a 20 percent chance of showers mid to late afternoon.</p>			
CWR.....10 percent.			
LAL.....1.			
Max temperature.....62.			
Min humidity.....37 percent.			
<p>Wind (20 ft).....South 6 to 10 mph in the morning becoming southwest 10 to 15 mph in the afternoon with gusts 25 mph. Wind shift with the cold front west 12 to 16 mph with gusts to 30 mph between 1500 and 1700 pdt.</p>			
Mixing height.....As high as 7000 ft AGL between 1300 and 1800 pdt.			
Transport winds.....Southwest 15 to 20 mph.			
Haines Index.....2 Very Low.			
.TUESDAY NIGHT...			
Sky/weather.....Partly cloudy.			
CWR.....0 percent.			
LAL.....1.			
Min temperature.....40.			
Max humidity.....80 percent.			
<p>Wind (20 ft).....Northwest 8 to 12 mph with gust to 23 mph between 1800 and 2000 pdt. Northwest wind decreasing to 5 to 8 mph with gusts to 18 mph exposed ridges.</p>			
Wind 3 to 5 mph by sunrise.			
Mixing height.....Decreasing to near the surface by 2200 pdt.			

# IAP

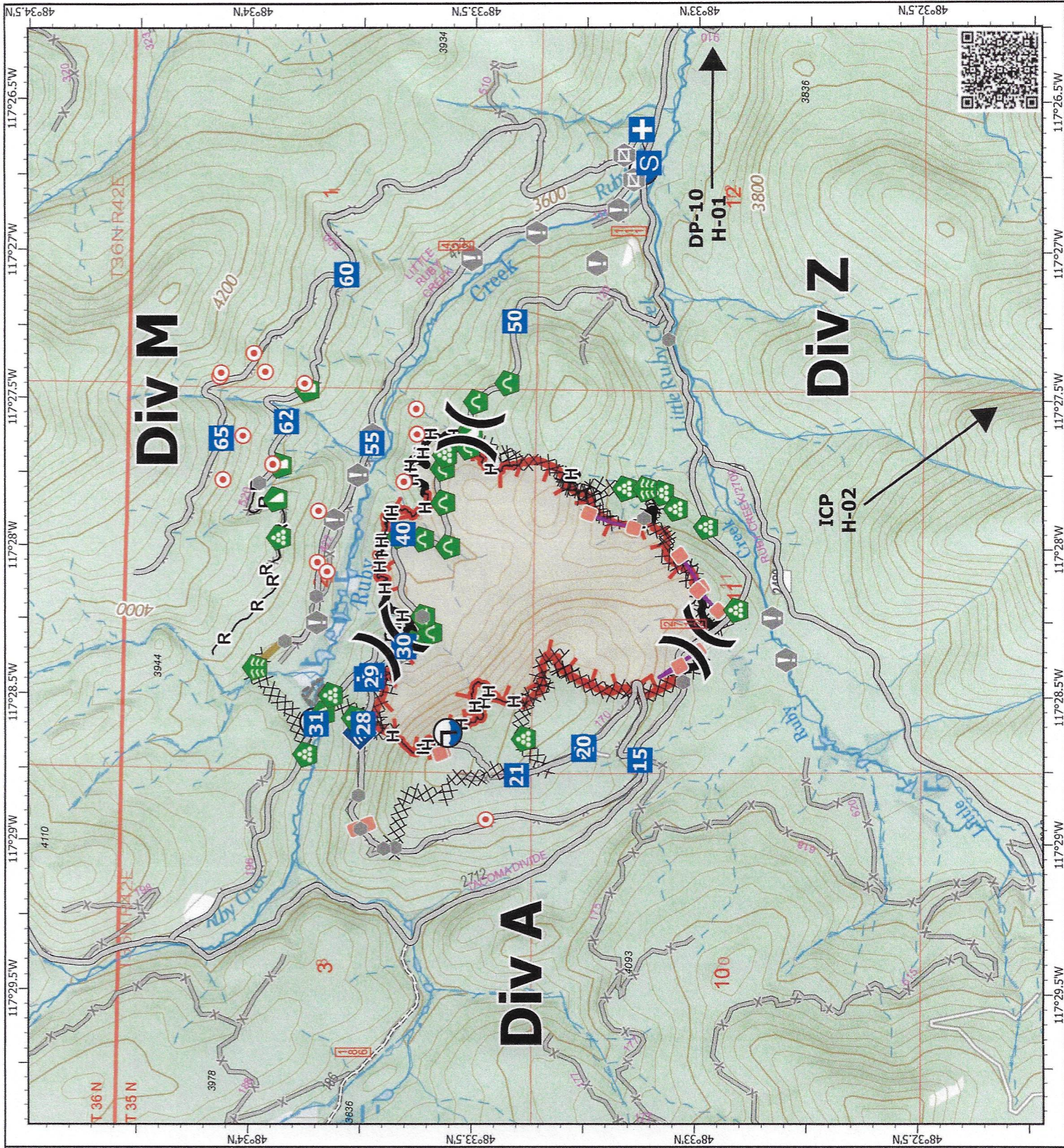
Upper Ruby  
WACOF-001850  
08/27/2024

280 acres at 08/26/2024 2001

- X Division Break
- Medical
- Drop Point
- Staging Area
- Hot Spot - Spot Fire
- Value at Risk
- Other
- Gate
- Bridge
- Stream Crossing
- Landing or Log Deck
- Dozer Push
- Culvert
- Internet Access
- Draft Site
- Completed Dozer Line
- Completed Hand Line
- Completed Road as Line
- Access Route
- Other
- Repair Line
- Retardant Drop
- Contained
- Uncontained
- Wildfire Daily Fire Perimeter



1:22,000 | TYPE 3 I/M T/NE31 8/26/2024 2025  
Acreage from IR and GPS  
North American 1983 Datum, Lat/Long Grid





**PLEASE FOLLOW ONE WAY TRAFFIC SIGNAGE**

**Please camp in designated areas only, away from vehicles.**

Showers: 0500-1000 & 1800-2300

Breakfast: 0530-0900 Dinner: 1830-2130

## Repair Standards on the Colville National Forest

### Hand line

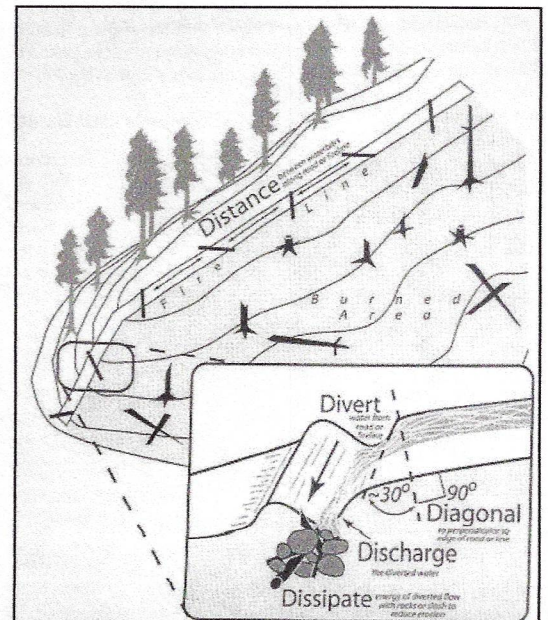
- Hand crews will be used to implement water bars.
- Pull berms and blend disturbed areas to fit the natural contours.
- Height of water bars should average 12 inches. Use natural dips and rolls where possible.
- Waterbar spacing guidelines.
  - < 15% - 150' spacing (distance apart)
  - 15 to 30% slope - 75' spacing
  - 30% to 45% - 50' spacing
  - > 45% slope - 25' spacing
- Construct water bars at 45-degree angle from the fire line, directing water into vegetated areas.
- Pull soil, litter, duff, debris, or grass removed from the line back onto the line, strive for 85% ground cover.
- Trenching should be filled in and the line restored to blend with the undisturbed soil contours.
- Visually obscure junction. Block road access to hand lines to discourage recreational use.

### Dozer line

- Pull berms back into line, scatter branches, wood, rock, sod, or other material to naturalize the fire line and prevent soil erosion. When there is not enough material to cover 50% of bare mineral soil, water bars should be implemented.
- Use an **excavator** (Type II or Type III) with 2 to 3 cubic yard bucket & thumb, capable of working steep slopes (50 to 60%), 30 to 35 ft boom reach.
- Hand crews may be used to construct waterbars & spread material on slopes greater than 50%.
- Place water bars on dozer lines with the following general spacing guidelines, modify as needed to minimize soil erosion.
  - 5% to 20% slope – 120 to 150' spacing (distance apart)
  - 21% to 34% slope - 90' spacing
  - > 35% slope - 80' spacing.
- **Block access to dozer lines that leave from existing open roads w/ recontouring, boulders or natural large woody material to prevent OHV use.**
- Fire lines through wet areas/riparian zones need to be rehabbed by hand, Consult READ if needed on streams.

### Waterbar Guidelines

- Distance/Spacing - The steeper the grade, the more frequent the placement of waterbars. Consider how much water will get captured by the line from the next uphill waterbar.
- Diagonal downhill – the waterbar should be installed at least 30 degrees, and up to 45 degrees, downhill of perpendicular across the line.
- Deep enough - at least 18" deep, so it won't get overtopped by the water coming down the line.
- Long enough - extends all the way from one edge of the line on the uphill side of the diagonal, and into the green on the downhill side. If it isn't all the way across the line on the upper side, runoff will flow around it.
- "Daylighted" - make sure the runoff from the 'bar can flow into the green and isn't obstructed by a berm or other blockage like root balls, slash.
- Dissipated - if the outlet has the potential to create a gully, build a small rock "garden" to dissipate the flow.



# Resource Protection Standards

## Dozer Standards

- Consult with REAFs if you have any concerns or questions.
- Dozer line maintained 50 feet from all creeks and water sources. Remaining line connected with hand line as needed.
- Dozers not to blade or walk across intermittent or active stream channels, wallows, wetlands, or other water sources if possible.
- Dozer line should use existing road templates if possible.

## Water Drafting Standards

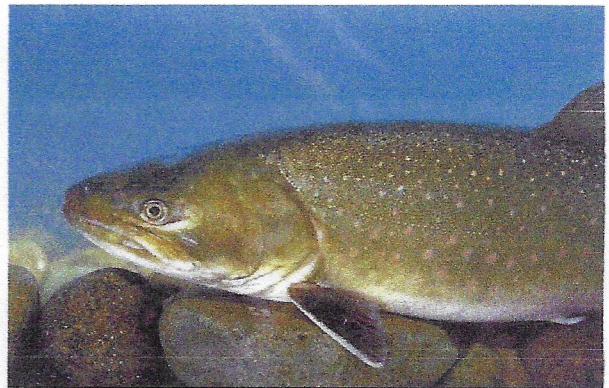
- Ensure all draft sites have fine screen mesh on intake hoses.
- Ensure containment aprons are under all pumps and gas.

## Control Line

- If timber is cut for machine control line ensure it is felled/arranged in a manner so it can be removed for later decking and sale.

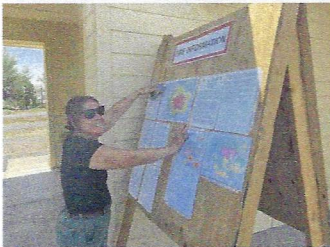
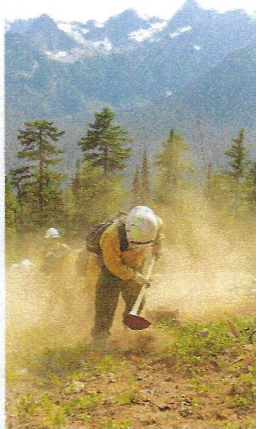
## Ruby Fire Specifics

- Fire retardant avoidance areas located in Fieldmaps.
- Ruby Creek is Critical Habitat for Bull trout, an ESA listed species.
- Numerous archeology sites in proximity to fire. All sites have been flagged in pink flagging. Keep control lines out of sites. Please consult with REAFs if fire perimeter is expected to impact sites.



# Information Station

Fire Hire is here! Are you interested in working for the U.S. Forest Service next fire season in 2025? If so, apply NOW through September 24th.



**2024**  
**FIRE**  
**HIRE**  
**4 PACIFIC NORTHWEST**  
**REGION**



FIRE HIRE is the Forest Service process for hiring the majority of our fire positions at the GS-3 through GS-9 grade level. The Pacific Northwest Region is looking for committed, hardworking individuals for fire and fuels management positions on 17 National Forests in Oregon and Washington. The fire and aviation program is very rewarding and requires working safely as part of a team in a variety of specialized positions, including dispatch, engine crews, fuels technicians, handcrews, helitack, hotshot crews, smokejumpers, and prevention.

**APPLY ON [WWW.USAJOBS.GOV](http://WWW.USAJOBS.GOV)**  
**Between: Aug. 23rd- Sept. 24th**



**FOR MORE INFORMATION:** visit  
<https://tinyurl.com/2p84bh9z> or  
scan the QR code.

# Safety Message

**Incident:**  
Upper Ruby Fire

**Date:**  
August 27, 2024

**Time:**  
Day Shift

**Major Hazard and Risk:**

Transportation  
Heavy Equipment  
Fire Weakened Trees/Snags  
Fatigue

**Implement LCES prior to operational engagement.**

**Transportation:** This hazard isn't going away soon. Drive slow and defensively. When meeting traffic on narrow roads always let the heavier vehicle(s) pass on the inside lane due to soft shoulders, steep slopes and potential for rollover. When parking be faced out and leave your keys with the vehicle in case it must be moved.

**Heavy Equipment:** When passing around heavy equipment try to maintain eye contact or see that the operator has stopped working, lowered the implement and idled down. The rule of thumb for working around heavy equipment is at least 100 ft in front of and 50 behind the equipment. In timber that distance is increased to 2.5 times the canopy height.

**Fire Weakened Trees/Snags:** Keep an eye open for "Hazard Trees". Post lookouts in areas where multiple people are working, and the terrain and density of vegetation makes it difficult to maneuver through. Flag individual trees or areas that are just not safe to work.

**Fatigue:** is the pathway to compromising your performance and safety. Be at your best performance mentally and physically:

- Stay hydrated
- Eat well
- Get plenty of rest

**On the Upper Ruby Fire definitive care is 1-2 hours away.**

In the case of a traumatic injury, the "golden hour" is a crucial time for survival when rapid transport to the closest appropriate hospital/medical center is required. Studies have shown that a shorter time to definitive care is positively associated with patient survival and functional outcome.

**Stay engaged mentally and work smart with the goal to eliminate the occurrence and severity of accidents and injuries.**

1. Incident/Project Name		2. Operational Period					
Upper Ruby		8/27/24 Day Shift					
3. Ambulance Services							
Name	Complete Address	Phone & EMS Frequency	Advanced Life Support (ALS)				
PO County FD #2	Blueslide/Tiger/Metaline Falls, WA	911/509-442-2311	<input checked="" type="checkbox"/> Yes	<input type="checkbox"/> No			
PO County FD #4	Dalkena, WA	911/509-447-2476	<input type="checkbox"/> Yes	<input checked="" type="checkbox"/> No			
Kalispel Tribal FD	Usk, WA	911	<input type="checkbox"/> Yes	<input checked="" type="checkbox"/> No			
South PO Fire and Rescue	Several locations in South PO County	911/509-447-5305	<input type="checkbox"/> Yes	<input checked="" type="checkbox"/> No			
4. Air Ambulance Services							
Name	Phone	Type of Aircraft & Capability					
Lifeflight Network, Spokane, WA	Call NEWICC / 800-232-0911	Advanced Life Support					
Airlift Northwest	Call NEWICC/	Advanced Life Support					
Fairchild AFB, Airway Hieghts, WA	Call NEWICC / 509-247-4051	Advanced Life Support					
Spokane County Sheriff	Call NEWICC/ 509-532-8900	Hoist ship, Advance Life Support,additional air ambulance for transport					
5. Hospitals							
Name Complete Address	GPS Datum – WGS 84 Coordinate Standard Degrees Decimal Minutes DD° MM.MMM' N - Lat DD° MM.MMM' W - Long		Travel Time Air Gnd	Phone	Helipad		Level of Care Facility
	Lat:	Long:			VHF:	<input checked="" type="checkbox"/> Yes	
Newport Hospital; 714 Pine Street; Newport, WA	N48 10.93	W117 02.96		509-447-7928	<input checked="" type="checkbox"/> Yes	<input type="checkbox"/> No	Level 4 Trama Center
Providence Sacred Heart; 101 W 8th; Spokane, WA	N47 38.95	W117 24.78		509-474-3131	<input checked="" type="checkbox"/> Yes	<input type="checkbox"/> No	Level 2 Trama Center
Providence Holy Family; 5633 N. Lidgerwood, Spokane, WA	N47 42.57	W117 24.4		509-482-0111	<input checked="" type="checkbox"/> Yes	<input type="checkbox"/> No	Level 3 Trama Center
Deaconess Hospital; 800 W 5th Avenue, Spokane, WA	N47 39.1	W117 25.46		509-458-5800	<input checked="" type="checkbox"/> Yes	<input type="checkbox"/> No	Level 3 Trama Center
Harborview Medical Center; 325 9th Avenue, Seattle, WA	N47 36.1	W121 19.3		206-744-3000 Emergency # 206-744-4074	<input checked="" type="checkbox"/> Yes	<input type="checkbox"/> No	Level 1 Trama Center Burn Center
	Lat:				<input type="checkbox"/> Yes	<input type="checkbox"/> No	
	Long:						
	VHF:						



6. Division   Branch		Area Location Capability	
Identify crew EMTs on the line for each Division prior to engaging. In case of urgent situation, notify your supervisor and follow the MEDICAL INCIDENT REPORT "ICS 206" procedure on pages 118-120 in the 2022 IRPG. Notify operations of needs and location on command channel. Operations will notify NEWICC and base camp. Minimize radio traffic and maintain situational awareness.			
<b>Div A</b>	EMS Responders &	Medic Richmond	
	Equipment Available on	ALS, AED, O2,	
	Medical Emergency	Command 1 (CMD) 1Secondary Command (CAL SPL E)	
	ETA Ambo to Hospital	GROUND: 60Min	AIR: 20-45 min to Hospital
	Ground:	Ambo at staging	
	Approved Helispot:	Drop Point: 10	Helispot: 1
	Lat:	48 33.084'N	
	Long:	117 24.611'W	
<b>Div M/ Z</b>	EMS Responders &	REM 1	
	Equipment Available on	BLS, Vehicle extrication equipment, Rope rescue	
	Medical Emergency	Command 1 (CMD) 1Secondary Command (CAL SPL E)	
	ETA Ambo to Hospital	GROUND: 60Min	AIR: 20-45 min to Hospital
	Ground:	Ambo at staging	
	Approved Helispot:	Drop Point: 10	Helispot: 1
	Lat:	48 33.084'N	
	Long:	117 24.611'W	
7. Name & Location			
<b>Staging Area</b>	EMS Responders &	Ambo 1	
	Equipment Available on	ALS, AED, O2,	
	Medical Emergency Channel:	Command 1 (CMD)	Secondary Command (CAL SPL E)
	ETA for Ambo to Hospital	GROUND: 60Min	AIR: 20-45 min to Hospital
	Ground:	Staging Area	
	Approved Helispot:	Drop Point: 10	Helispot: 1
	Lat:	48 33.084'N	
	Long:	117 24.611'W	
<b>Basecamp</b>	EMS Responders &	MEDL-(T) Richard Grajek	
	Equipment Available on	BLS first aid care	
	Medical Emergency Channel:	Command 1 (CMD)	Secondary Command (CAL SPL E)
	ETA for Ambo to Hospital	GROUND: 60Min	AIR: 20-45 min to Hospital
	Air:	Local Air Medical Transport	
	Ground:	Local EMS Transport	
	Approved Helispot:	Helispot: 2	
	Lat:	48 20.778'N	
Long:	117 17.047'W		
8. Prepared By (Medical Unit Leader)		9. Date/Time	10. Reviewed By (Safety Officer)
Richard Grajek MEDL-(T) <i>R. Grajek</i>		0900 8/26/24	Dan Garner SOFR <i>Dan Garner</i>
			0900 8/26/24





# MEDICAL PLAN (ICS 206 WF)

Controlled Unclassified Information//Basic

## Medical Incident Report

**FOR A NON-EMERGENCY INCIDENT, WORK THROUGH CHAIN OF COMMAND TO REPORT AND TRANSPORT INJURED PERSONNEL AS NECESSARY.**

**FOR A MEDICAL EMERGENCY: IDENTIFY ON SCENE INCIDENT COMMANDER BY NAME AND POSITION AND ANNOUNCE "MEDICAL EMERGENCY" TO INITIATE RESPONSE FROM IMT COMMUNICATIONS/DISPATCH.**

Use the following items to communicate situation to communications/dispatch.

**1. CONTACT COMMUNICATIONS / DISPATCH (Verify correct frequency prior to starting report)**

Ex: "Communications, Div. Alpha. Stand-by for Emergency Traffic."

**2. INCIDENT STATUS: Provide incident summary (including number of patients) and command structure.**

Ex: "Communications, I have a Red priority patient, unconscious, struck by a falling tree. Requesting air ambulance to Forest Road 1 at (Lat./Long.) This will be the Trout Meadow Medical, IC is TFLD Jones. EMT Smith is providing medical care."

Severity of Emergency / Transport Priority	<input type="checkbox"/> <b>RED / PRIORITY 1</b> Life or limb threatening injury or illness. Evacuation need is <b>IMMEDIATE</b> <i>Ex: Unconscious, difficulty breathing, bleeding severely, 2<sup>o</sup> - 3<sup>o</sup> burns more than 4 palm sizes, heat stroke, disoriented.</i>	
	<input type="checkbox"/> <b>YELLOW / PRIORITY 2</b> Serious injury or illness. Evacuation may be <b>DELAYED</b> if necessary. <i>Ex: Significant trauma, unable to walk, 2<sup>o</sup> - 3<sup>o</sup> burns not more than 1-3 palm sizes.</i>	
	<input type="checkbox"/> <b>GREEN / PRIORITY 3</b> Minor injury or illness. Non-Emergency transport <i>Ex: Sprains, strains, minor heat-related illness.</i>	
Nature of Injury or Illness & Mechanism of Injury		Brief Summary of Injury or Illness (Ex: Unconscious, Struck by Falling Tree)
Transport Request		Air Ambulance / Short Haul/Hoist Ground Ambulance / Other
Patient Location		Descriptive Location & Lat. / Long. (WGS84)
Incident Name		Geographic Name + "Medical" (Ex: Trout Meadow Medical)
On-Scene Incident Commander		Name of on-scene IC of Incident within an Incident (Ex: TFLD Jones)
Patient Care		Name of Care Provider (Ex: EMT Smith)

**3. INITIAL PATIENT ASSESSMENT: Complete this section for each patient as applicable (start with the most severe patient)**

Patient Assessment: See IRPG page 106

Treatment:

**4. TRANSPORT PLAN:**

Evacuation Location (if different): (Descriptive Location (drop point, intersection, etc.) or Lat. / Long.) Patient's ETA to Evacuation Location:

Helispot / Extraction Site Size and Hazards:

**5. ADDITIONAL RESOURCES / EQUIPMENT NEEDS:**

Example: Paramedic/EMT, Crews, Immobilization Devices, AED, Oxygen, Trauma Bag, IV/Fluid(s), Splints, Rope rescue, Wheeled litter, HAZMAT, Extrication

**6. COMMUNICATIONS: Identify State Air/Ground EMS Frequencies and Hospital Contacts as applicable**

Function	Channel Name/Number	Receive (RX)	Tone/NAC *	Transmit (TX)	Tone/NAC *
COMMAND					
AIR-TO-GRND					
TACTICAL					

**7. CONTINGENCY: Considerations: If primary options fail, what actions can be implemented in conjunction with primary evacuation method? Be thinking ahead.**

**8. ADDITIONAL INFORMATION: Updates/Changes, etc.**

**REMEMBER: Confirm ETA's of resources ordered. Act according to your level of training. Be Alert. Keep Calm. Think Clearly. Act Decisively.**