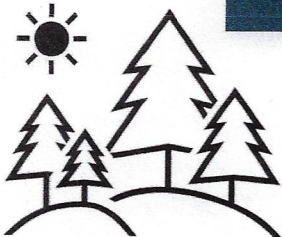


INCIDENT ACTION PLAN

# UPPER RUBY FIRE



For maps, evaluations, and IAPs Scan the QR Code!



Wednesday, August 28, 2024


0600-2000 Operational Period

WA-COF-001850

AIR	Daily	Approval
DNR	%	
USFS	%	

221-BUE  
P6 R6UC (0621) [P]

GROUND	Daily	Approval
DNR	%	
USFS	%	

<b>Incident Objectives</b>	1. Incident Name <b>Upper Ruby</b>	2. Date Prepared <b>8/27/2024</b>	3. Time Prepared <b>1200</b>
4. Operational Period (Date and Time) <b>8/28/2024                      0600-2000</b>			
5. General Control Objectives for the Incident (include Alternatives)			
<ul style="list-style-type: none"> <li>• Provide for firefighter and public safety at all times. This includes the application of the "10 and 18", LCES, and the Risk Management Process.</li> <li>• Ensure structures and infrastructure are properly identified and mopped up around</li> <li>• Minimize acres burned.</li> <li>• Act professionally and in a manner that fosters good relationships with the public, private landowners, timber industry representatives, elected officials and other stakeholders.</li> <li>• Follow agency policies at all times and respect the policies of the host agency.</li> <li>• Maximize opportunities for cost savings without jeopardizing public or firefighter safety</li> <li>• Provide timely communications and accurate information as it becomes available.</li> </ul>			
6. Weather Forecast for Operational Period			
<b>See attached weather forecast</b>			
7. General Safety Message			
<ul style="list-style-type: none"> <li>• Provide for firefighter and public safety at all times.</li> <li>• Monitor compliance of 10 and 18 by all incident personnel.</li> <li>• Adhere to 2:1 work/rest ratio for all fire line personnel.</li> <li>• Aviation safety is high priority. Assess the risk against the benefit of the mission.</li> <li>• Ensure all assigned personnel understand emergency medical reporting &amp; transport procedures including locations of nearest emergency responders &amp; facilities.</li> </ul>			
8. Attachments (check if attached)			
ICS-202	9. Prepared by (PSC) <b>Brian Hansen</b>	10. Approved by (IC) 	

<b>ORGANIZATION ASSIGNMENT LIST</b>					
1. Incident Name		<b>Upper Ruby</b>		<b>9. OPERATIONS SECTION</b>	
2. Date	8/27/2024	3. Time	1200	Planning	Greg Anderson
4. Operational Period	8/28/2024	0600-2000		Field	Shawn Soliday
<b>5. INCIDENT COMMANDER &amp; STAFF</b>				<b>a. Division A</b>	
Incident Commander	Andrew Stenbeck		Division Sup	Andrew Triolo	
Safety Officer	Brad Lidell		TFLD		
Safety Officer	Mike Cook		<b>b. Division M</b>		
			Division Sup	Todd Dormaier	
Medical Officer	Richard Grajek		TFLD		
Information Officer	Guy Gifford		<b>c. Division Z</b>		
Information Officer (t)	Alison Mims		Division Sup	Brett Walker	
<b>6. AGENCY REPRESENTATIVE</b>				TFLD	
<b>Agency</b>	<b>Name</b>		<b>d. EQUIPMENT</b>		
USFS	Luke Decker		Divison Sup	Jake Morse TFL(t)	
USFS (t)	Marshell Moy		TFLD		
USFW	Cassie Roeder				
WA DNR	Pat Ryan				
<b>7. PLANNING SECTION</b>					
PSC (t)	Brian Hansen				
SITL (t)	Eric Krausz				
GISS	Kat Russell				
ITSS	Kyle Wagner				
				<b>10. FINANCE SECTION</b>	
Comms Manager	Shawn Pichette		Chief	Tina Paccereilli	
COMT	Bob Leaming		PTRC	Laurie Babbitt	
RADO	Kerry Nyhuis				
RADO	David Yoppini				
Trailer	509-389-2002				
<b>8. LOGISTICS SECTION</b>				<b>11. CONTACTS / OTHER INFORMATION</b>	
Chief	Matt Lougy		NEWICC (509) 685-6900		
Chief (t)	Cole Shirley		wanec_expanded@firenet.gov		
				Prepared by (Resource Unit Leader)	
				Brian Hansen	

DIVISION ASSIGNMENT LIST			1. Branch		2. Division / Group			
3. Incident Name			4. Operational Period					
Upper Ruby			Date: 8/28/2024		Time: 0600-2000			<b>A</b>
5. Operations Personnel								
Operations Chief		Shawn Soliday		Planning Operations		Greg Anderson		
Safety Officer		Brad Lidell		Division/Group Supervisor		Andrew Triolo		
6. Resources Assigned this Period								
RO #	Strike Team/Task Force/Resource	Leader	# People	Contact (phone, radio freq, etc.)	EMT	LWD	Remarks	
O-7	TFLD	ANDREW TRIOLO	1	303-519-0302		9/4		
C-7	CR2I-NW-COF-C101 THREE RIVERS	BRIANNA STROBEL	21					
C-2	CRW1 - ROOSEVELT IHC	LARRY MONEY	21			9/4		
C-11	CRW2 - TRI CITIES FORESTRY	ENRIQUE BARADAS	20	509-400-1745		9/8		
C-12	CRW2 - KITTITAS 421	CHASE BREWER	20	509-856-5504		8/29		
E-50	ENG3 - MSF - E312					9/7		
E-51	ENG3 - RATTLESNAKE RIDGE 5295					9/7		
E-52	ENG3 - RATTLESNAKE RIDGE 4169					9/7		
O-14	SMOD - REPUBLIC	GABE GIDDINGS	15			9/1		
E-54	KALISPEL BRUSH 1	KEN PERALTA	3	509-671-1403				
E-44	WTS2 - PEND ORIELLE TENDER	PAT MILLER	1			9/5		
O-46	EMPF	TIM RICHMOND	1			9/4		
			102					
7. Work Assignments								
8. Special Instructions								
E-11 AMB1 at Staging Area								
9. Communication Summary								
Function	Name	Mode	Frequency					
PRIMARY COMMAND	CMD 1	A	151.5125	N	186.2	158.4075	N	186.2
SECONDARY	CALSPL-E	A	171.475	N	146.2	164.625	N	103.5
ALPHA TAC	TAC 3	A	151.76	N	186.2	151.76	N	186.2
EQUIPMENT TAC	TAC 6	A	151.625	N	186.2	151.625	N	186.2
PRIMARY A/G	A/G PRIMARY	A	169.2	N	0	169.2	N	0
SECONDARY A/G	A/G SECONDARY	A	167.95	N	0	167.95	N	0
Prepared by (RESL) Eric Krausz		Approved by (PSC) Brian Hansen			Date: 8/27/2024		Time: 1200	

DIVISION ASSIGNMENT LIST			1. Branch		2. Division / Group			
3. Incident Name <b>Upper Ruby</b>			4. Operational Period Date: <b>8/28/2024</b> Time: <b>0600-2000</b>					
5. Operations Personnel								
Operations Chief			<i>Shawn Soliday</i>		Planning Operations		<i>Greg Anderson</i>	
Safety Officer			<i>Brad Lidell</i>		Division/Group Supervisor		<i>Todd Dormaier</i>	
6. Resources Assigned this Period								
RO #	Strike Team/Task Force/Resource	Leader	# People	Contact (phone, radio freq, etc.)	EMT	LWD	Remarks	
O-17	TFLD	SHANNON CLARK	1	360-770-4977		9/4		
O-15	TFLD(t)	ROB BARR	1	505-377-8312		9/4		
C-1	CRW1-WOLF CREEK IHC	JEREMIAH COKE	20	541-391-1021		9/2		
C-4	CRW2 - T2C496 FRANCISCONEROS III	CHIPPERZ MARTINEZ (t)	20	509-400-1368 509-439-2908		9/4		
C-10	CRW2 - BLUE MTN	RAMOS / TORRES (t)	20	559-542-6605 971-332-0303		9/5		
O-19	RED RIVER MOD	ZAC CHRISTOPHER	9	505-469-5041		9/4		
E-18	ENG3 - ANGEL FIRE FD E3573	MICHEAL LUJAN	3	505-617-5828		9/4		
E-19	ENG6 - COCHITI FD BRUSH 83	DOMINICK ORTIZ	4	505-400-5821		9/4		
E-20	ENG6 - RUIDOSO FD 329203 - E 17	ALEC DAVIS	2	575-791-2053	2	9/4		
E-21	ENG3 - FARMINGTON FD E31	CODY HILL	3	970-560-0650	1	9/4	EMT(I)	
O-29	HEQB	NEWMEIER	1	360-359-8552		8/29		
E-17	EXC2 - ANDERSON EXCAVATION INC	TODD ANDERSON	1	509-721-0168		9/5		
O-31	REMS	GREG NOWAK	2	509-993-4544	2	8/29	EMT(I)	
			87					
7. Work Assignments								
8. Special Instructions								
E-11 AMB1 at Staging Area								
9. Communication Summary								
Function	Name	Mode	Frequency					
PRIMARY COMMAND	CMD 1	A	151.5125	N	186.2	158.4075	N	186.2
SECONDARY COMMAND /	CALSPL-E	A	171.475	N	146.2	164.625	N	103.5
MIKE TAC	TAC 4	A	151.7	N	186.2	151.7	N	186.2
EQUIPMENT TAC	TAC 6	A	151.625	N	186.2	151.625	N	186.2
PRIMARY A/G	A/G PRIMARY	A	169.2	N	0	169.2	N	0
SECONDARY A/G	A/G SECONDARY	A	167.95	N	0	167.95	N	0
Prepared by (RESL) Eric Krausz		Approved by (PSC) <b>Brian Hansen</b>			Date: 8/27/2024		Time: 1200	

<b>DIVISION ASSIGNMENT LIST</b>			1. Branch		2. Division / Group <b>Z</b>			
3. Incident Name <b>Upper Ruby</b>			4. Operational Period Date: <b>8/28/2024</b> Time: <b>0600-2000</b>					
<b>5. Operations Personnel</b>								
Operations Chief		<i>Shawn Soliday</i>		Planning Operations		<i>Greg Anderson</i>		
Safety Officer		<i>Brad Lidell</i>		Division/Group Supervisor		<i>Brett Walker</i>		
<b>6. Resources Assigned this Period</b>								
RO #	Strike Team/Task Force/Resource	Leader	# People	Contact (phone, radio freq, etc.)	EMT	LWD	Remarks	
C-3	CR21 - NW - NES - HIGHLANDS - DNR	SCHERTENLIEB	21	509-675-6452	2	9/1		
C-6	CRW1 - CRW1 - YUKON TERRITORIES	PIKE	20	867-334-3684	5	8/31		
E-34	SKG1 - TIGER TRUCKING INC.	HEATH	1	509-675-6903		9/4		
			42					
<b>7. Work Assignments</b>								
<b>8. Special Instructions</b>								
E-11 AMB1 at Staging Area								
<b>9. Communication Summary</b>								
Function	Name	Mode	Frequency					
PRIMARY COMMAND	CMD 1	A	151.5125	N	186.2	158.4075	N	186.2
SECONDARY COMMAND /	CALSPL-E	A	171.475	N	146.2	164.625	N	103.5
ZULU TAC	TAC 5	A	151.505	N	186.2	151.505	N	186.2
EQUIPMENT TAC	TAC 6	A	151.625	N	186.2	151.625	N	186.2
PRIMARY A/G	A/G PRIMARY	A	169.2	N	0	169.2	N	0
SECONDARY A/G	A/G SECONDARY	A	167.95	N	0	167.95	N	0
Prepared by (RESL) Eric Krausz		Approved by (PSC) <b>Brian Hansen</b>			Date: 8/27/2024		Time: 1200	

DIVISION ASSIGNMENT LIST			1. Branch		2. Division / Group		<b>EQUIPMENT</b>		
3. Incident Name <b>Upper Ruby</b>				4. Operational Period Date: <b>8/28/2024</b> Time: <b>0600-2000</b>					
5. Operations Personnel									
Operations Chief		<i>Shawn Soliday</i>			Planning Operations			<i>Greg Anderson</i>	
Safety Officer		<i>Brad Lidell</i>			Division/Group Supervisor			<i>Jake Morse TFL(t)</i>	
6. Resources Assigned this Period									
RO #	Strike Team/Task Force/Resource	Leader	# People	Contact (phone, radio freq, etc.)	EMT	LWD	Remarks		
E-1	WTS2 - Axsus Enterprises		1			9/2			
E-3	WTS1-PECN 2-WT25	JOEL	1			9/3			
E-12	WTS2 - ASPEN MOUNTAIN RESOURCES INC -	RICK	1	509-429-0374		9/5			
E-13	WTS2 - ELIJAH NOEL - 164086	RAY	1	678-447-2581		9/4			
E-24	WTS2 - MILLER TIMBER SERVICES, INC. - VE8393	DAVI	1	971-716-8005		9/2			
E-15	WTT-PEND OREILLE COUNTY FIRE DISTRICT TENDER 43	JIM	1	509-315-7956		9/4			
E-7	DZR3 - TIGER TRUCKING - G01116	ROGER HIATT	1	509-679-2314		9/4			
E-10	SKG2 - CHANTRY-50S645	AUBERT	2			9/4			
E-53	GRD2 - BRETZ 04854t	RYLAN	1	509-429-1564		9/7			
LOL	HEQB	STEADY		509-679-2314					
O-6.7	GISS	TRENTON BARIBAULT	1			9/1			
			11						
7. Work Assignments									
8. Special Instructions									
<b>E-11 AMB1 at Staging Area</b>									
9. Communication Summary									
Function	Name	Mode	Frequency						
PRIMARY COMMAND	CMD 1	A	151.5125	N	186.2	158.4075	N	186.2	
SECONDARY COMMAND /	CALSPL-E	A	171.475	N	146.2	164.625	N	103.5	
EQUIPMENT TAC	TAC 6	A	151.625	N	186.2	151.625	N	186.2	
ALPHA TAC	TAC 3	A	151.76	N	186.2	151.76	N	186.2	
MIKE TAC	TAC 4	A	151.7	N	186.2	151.7	N	186.2	
ZULU TAC	TAC 5	A	151.505	N	186.2	151.505	N	186.2	
PRIMARY A/G	A/G PRIMARY	A	169.2	N	0	169.2	N	0	
SECONDARY A/G	A/G SECONDARY	A	167.95	N	0	167.95	N	0	
Prepared by (RESL) Eric Krausz			Approved by (PSC) <b>Brian Hansen</b>			Date: 8/27/2024		Time: 1200	

**INCIDENT RADIO COMMUNICATIONS PLAN I-205**

1. INCIDENT NAME: **UPPER RUBY**      2. DATE/TIME PREPARED: **8/27/2024**      3. OPERATIONAL PERIOD DATE/TIME: **8/28/2024**

**4. BASIC RADIO CHANNEL UTILIZATION**

Ch #	Function	Channel Name	Assignment	RX Freq	NW	RX Tone/NAC	TX Freq	NW	TX Tone/NAC	Mode Analog (A) Digital (D) Mixed (M)	Remarks
1	COMMAND	CMD 1	CMD	151.5125	N	186.2	158.4075	N	186.2	A	PRIMARY COMMAND
2	COMMAND	CMD 2	CMD	154.5275	N	186.2	158.4000	N	186.2	A	FUTURE USE
3	TAC	TAC 3	DIV A	151.7600	N	186.2	151.7600	N	186.2	A	ALPHA TAC
4	TAC	TAC 4	DIV M	151.7000	N	186.2	151.7000	N	186.2	A	MIKE TAC
5	TAC	TAC 5	DIV Z	151.5050	N	186.2	151.5050	N	186.2	A	ZULU TAC
6	TAC	TAC 6	EQUIP	151.6250	N	186.2	151.6250	N	186.2	A	EQUIPMENT TAC
7	TAC	TAC 7		154.3025	N	0.0	154.3025	N	0.0	A	UNASSIGNED
8	COMMAND	CALSPL-E	CMD	171.4750	N	146.2	164.6250	N	103.5	A	SECONDARY COMMAND / IA COMMAND
9	TAC	COL TAC	TAC	167.3750	N	0.0	167.3750	N	146.2	A	IA TAC
10	TAC	FS TAC	TAC	168.2000	N	0.0	168.2000	N	0.0	A	IA TAC
11	TAC	DNR TAC 1	TAC	151.3100	N	103.5	151.3100	N	103.5	A	IA TAC
12	AVG	AVG PRIMARY	AVG P	169.2000	N	0.0	169.2000	N	0.0	A	PRIMARY AVG
13	AVG	AVG SECONDARY	AVG S	167.9500	N	0.0	167.9500	N	0.0	A	SECONDARY AVG
14	AVG	AVG 51	AVG IA	168.3125	N	0.0	168.3125	N	0.0	A	IA AVG
15	MEDEVAC AVG	VMEDEVAC 29	MEDIVAC	155.3475	N	156.7	155.3475	N	156.7	A	AIR MEDICAL EVACUATION
16	AIRGUARD	AIRGUARD	EMERGENCY	168.6250	N	0.0	168.6250	N	110.9	A	EMERGENCY USE

5. Special Instructions: Communication Trailer Phone Number 24hrs 1-509-389-2002

6. I-205 Prepared By: Communications Unit Leader

Name: **SHAWN PICHETTE**

Signature:



**. DISCUSSION...**

Low pressure exits and high pressure starts to build in from the west. Expect dry conditions with decreasing clouds Wednesday and mostly clear conditions on Thursday. Some periodic breezy/gusty winds are still possible Wednesday afternoon. Winds then decline into Thursday. Quieter weather is expected into the end of the week, with warmer temperatures.

**. WEDNESDAY...**

Sky/weather.....Partly cloudy in the morning...mostly sunny  
in the afternoon.  
CWR.....0 percent.  
LAL.....1.  
Max temperature.... Around 63.  
Min humidity.....43 percent.  
Wind (20 ft) .....West winds 4 to 6 mph. Gusts to 14 mph in  
the afternoon.  
Mixing height.....6000 ft AGL in the afternoon.  
Transport winds.... Northwest 16 to 17 mph.  
Haines Index.....2 Very Low.

**. WEDNESDAY NIGHT...**

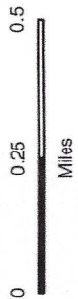
Sky/weather.....Mostly clear.  
CWR.....0 percent.  
LAL.....1.  
Min temperature.... Around 43.  
Max humidity.....69 percent.  
Wind (20 ft) .....Northwest winds around 5 mph in the evening  
becoming light.  
Mixing height.....4000 ft AGL falling to 0 ft AGL.  
Transport winds.... Northwest 6 to 8 mph.  
Haines Index.....4 Low.

# IAP

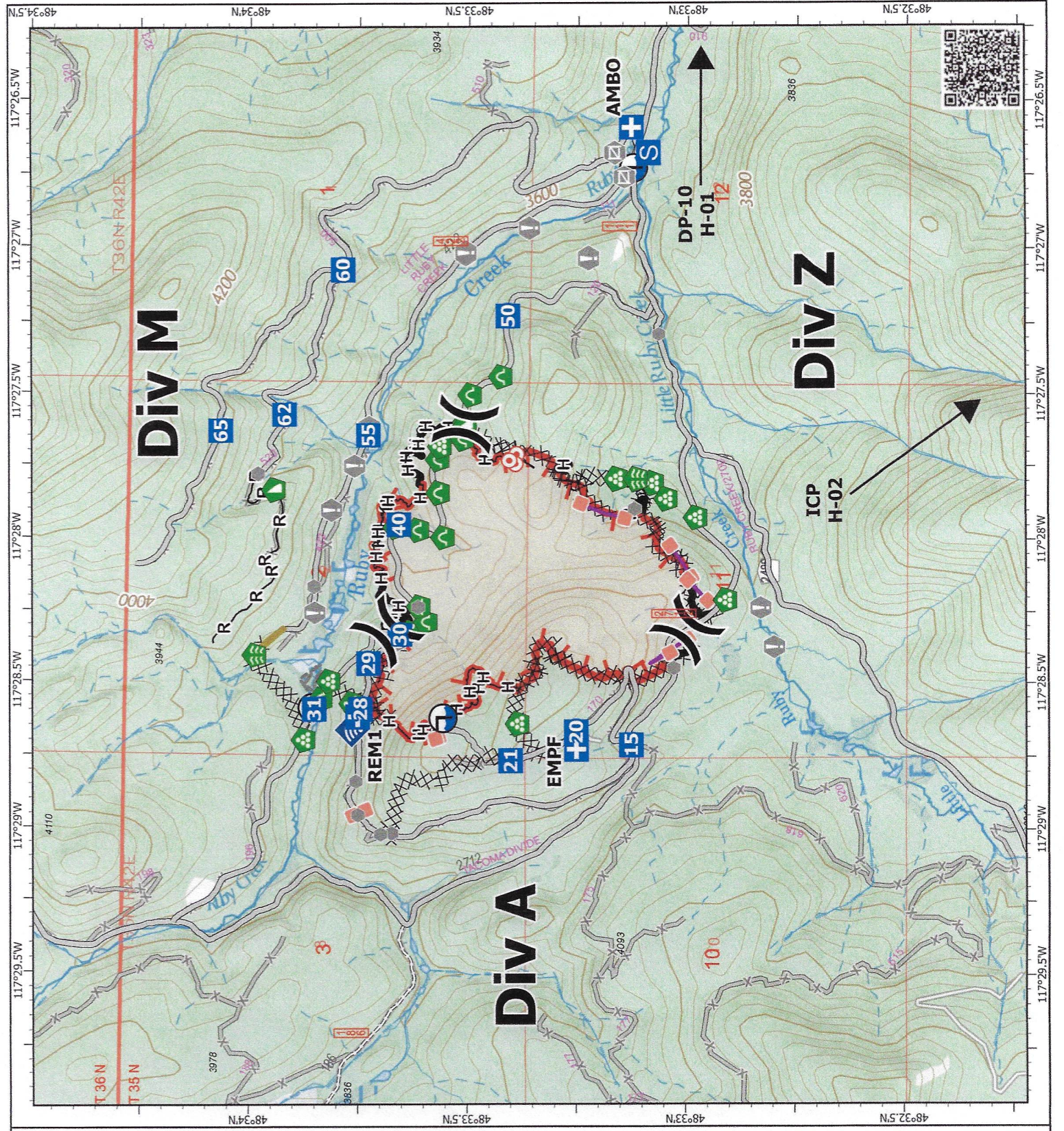
Upper Ruby  
WACOF-001850  
08/28/2024

280 acres at 08/26/2024 2001

- ( ) Division Break
- + Medical
- Drop Point
- Staging Area
- Hot Spot - Spot Fire
- Value at Risk
- Other
- Gate
- Bridge
- Stream Crossing
- Landing or Log Deck
- Dozer Push
- Culvert
- Internet Access
- Draft Site
- Completed Burnout
- Completed Dozer Line
- Completed Hand Line
- Completed Road as Line
- Access Route
- Other
- Repair Line
- Retardant Drop
- Contained
- Uncontained
- Wildfire Daily Fire
- Perimeter



1:22,000 | TYPE 3 IWTINES | 8/27/2024 2023  
Acres from R and GPS  
North American 1983 Datum, LatLong Grid





**PLEASE FOLLOW ONE WAY TRAFFIC SIGNAGE**

**Please camp in designated areas only, away from vehicles.**

Showers: 0500-1000 & 1800-2300

Breakfast: 0530-0900 Dinner: 1830-2130

## Repair Standards on the Colville National Forest

### Hand line

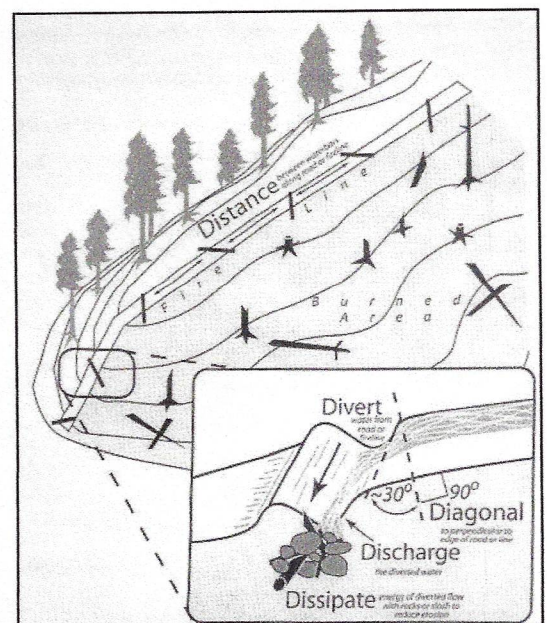
- Hand crews will be used to implement water bars.
- Pull berms and blend disturbed areas to fit the natural contours.
- Height of water bars should average 12 inches. Use natural dips and rolls where possible.
- Waterbar spacing guidelines.
  - < 15% - 150' spacing (distance apart)
  - 15 to 30% slope - 75' spacing
  - 30% to 45% - 50' spacing
  - > 45% slope - 25' spacing
- Construct water bars at 45-degree angle from the fire line, directing water into vegetated areas.
- Pull soil, litter, duff, debris, or grass removed from the line back onto the line, strive for 85% ground cover.
- Trenching should be filled in and the line restored to blend with the undisturbed soil contours.
- Visually obscure junction. Block road access to hand lines to discourage recreational use.

### Dozer line

- Pull berms back into line, scatter branches, wood, rock, sod, or other material to naturalize the fire line and prevent soil erosion. When there is not enough material to cover 50% of bare mineral soil, water bars should be implemented.
- Use an **excavator** (Type II or Type III) with 2 to 3 cubic yard bucket & thumb, capable of working steep slopes (50 to 60%), 30 to 35 ft boom reach.
- Hand crews may be used to construct waterbars & spread material on slopes greater than 50%.
- Place water bars on dozer lines with the following general spacing guidelines, modify as needed to minimize soil erosion.
  - 5% to 20% slope – 120 to 150' spacing (distance apart)
  - 21% to 34% slope - 90' spacing
  - > 35% slope - 80' spacing.
- **Block access to dozer lines that leave from existing open roads w/ recontouring, boulders or natural large woody material to prevent OHV use.**
- Fire lines through wet areas/riparian zones need to be rehabbed by hand, Consult READ if needed on streams.

### Waterbar Guidelines

- Distance/Spacing - The steeper the grade, the more frequent the placement of waterbars. Consider how much water will get captured by the line from the next uphill waterbar.
- Diagonal downhill – the waterbar should be installed at least 30 degrees, and up to 45 degrees, downhill of perpendicular across the line.
- Deep enough - at least 18" deep, so it won't get overtopped by the water coming down the line.
- Long enough - extends all the way from one edge of the line on the uphill side of the diagonal, and into the green on the downhill side. If it isn't all the way across the line on the upper side, runoff will flow around it.
- "Daylighted" - make sure the runoff from the 'bar can flow into the green and isn't obstructed by a berm or other blockage like root balls, slash.
- Dissipated - if the outlet has the potential to create a gully, build a small rock "garden" to dissipate the flow.



# Resource Protection Standards

## Dozer Standards

- Consult with REAFs if you have any concerns or questions.
- Dozer line maintained 50 feet from all creeks and water sources. Remaining line connected with hand line as needed.
- Dozers not to blade or walk across intermittent or active stream channels, wallows, wetlands, or other water sources if possible.
- Dozer line should use existing road templates if possible.

## Water Drafting Standards

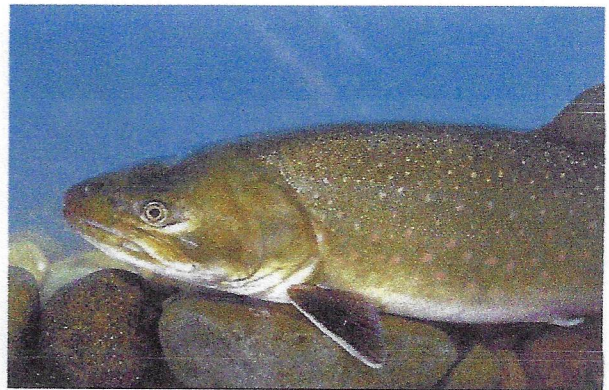
- Ensure all draft sites have fine screen mesh on intake hoses.
- Ensure containment aprons are under all pumps and gas.

## Control Line

- If timber is cut for machine control line ensure it is felled/arranged in a manner so it can be removed for later decking and sale.

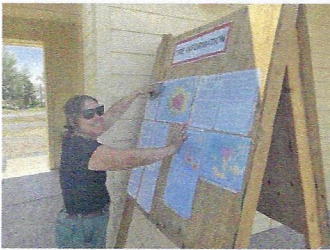
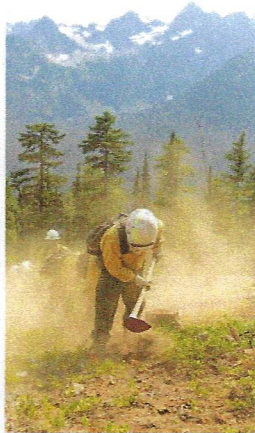
## Ruby Fire Specifics

- Fire retardant avoidance areas located in Fieldmaps.
- Ruby Creek is Critical Habitat for Bull trout, an ESA listed species.
- Numerous archeology sites in proximity to fire. All sites have been flagged in pink flagging. Keep control lines out of sites. Please consult with REAFs if fire perimeter is expected to impact sites.



## Information Station

Fire Hire is here! Are you interested in working for the U.S. Forest Service next fire season in 2025? If so, apply NOW through September 24th.



**2024** **FIRE HIRE**  
**4** **PACIFIC NORTHWEST REGION**



FIRE HIRE is the Forest Service process for hiring the majority of our fire positions at the GS-3 through GS-9 grade level. The Pacific Northwest Region is looking for committed, hardworking individuals for fire and fuels management positions on 17 National Forests in Oregon and Washington. The fire and aviation program is very rewarding and requires working safely as part of a team in a variety of specialized positions, including dispatch, engine crews, fuels technicians, handcrews, helitack, hotshot crews, smokejumpers, and prevention.

**APPLY ON [WWW.USAJOBS.GOV](http://WWW.USAJOBS.GOV)**  
**Between: Aug. 23rd- Sept. 24th**



**FOR MORE INFORMATION:** visit  
<https://tinyurl.com/2p84bh9z> or  
scan the QR code.

# Public Information

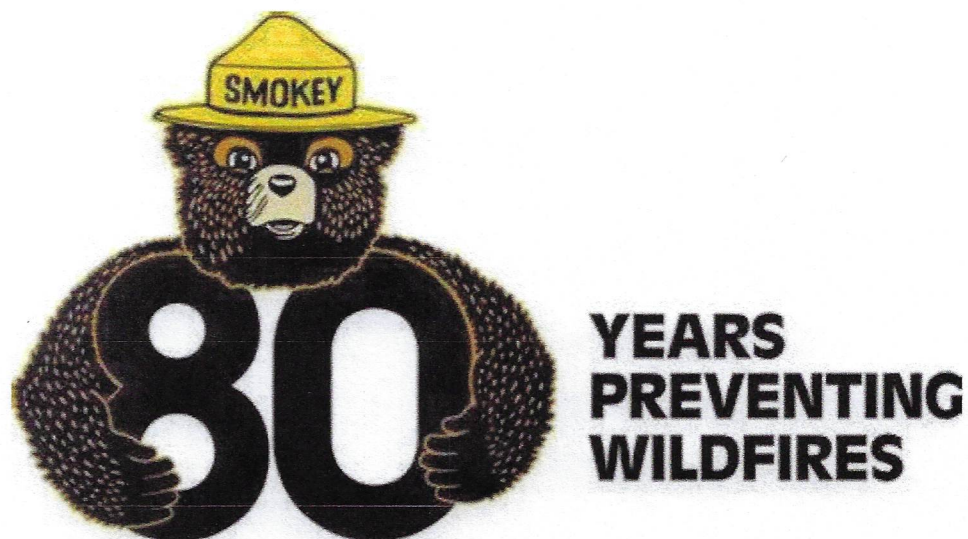
The following information can be given to the public if they need more information.

Public Information phone number 509-990-6218

Email: [guy\\_gifford@firenet.gov](mailto:guy_gifford@firenet.gov)

Inciweb: <https://inciweb.wildfire.gov/incident-information/wacof-upper-ruby>

Facebook: <https://www.facebook.com/newfireinfo>



# Safety Message

**Incident:**  
Upper Ruby Fire

**Date:**  
August 28, 2024

**Time:**  
Day Shift

**Major Hazard and Risk:**

Transportation  
Fire Weakened Trees/Snags  
Mop-up Operations  
Camp Crud

## Lookouts-Communications-Escape Routes-Safety Zones

**Transportation:** There have been several reports of vehicles and equipment not directly and maybe some directly associated with fire personnel that are driving too fast on the access roads to the firelines. Drive slowly and defensively.

**Fire Weakened Trees/Snags:** Continue to be vigilant to Post lookouts where multiple people are working. The terrain and density of vegetation makes it difficult to maneuver along the fireline. Flag individual trees or areas that are just not safe to work.

**Mop-Up Operations:** This country is a challenge to mop-up. The vegetation is thick and hard to discard trees and limbs cut from the fireline. In addition, it is difficult to even walk the line in some areas due to steep slopes. Slippery surfaces due to the rain and suppression water have exacerbated the situation. There continues to be hot ash pits and significant heat in the large brush piles that are being broken up with the excavator. These heat sources can cause significant burns if not careful.

- Watch your footing
- Where you PPE and wear it appropriately
- Be careful not to dislodge rocks and other materials that could roll down and impact fellow worker(s)
- Keep a heads up for snags and weakened trees that can come down without notice

**Camp Crud:** There has been a report of increased coughing and hacking the past couple of days. Follow the items below to reduce your chance of contracting a cold or respiratory infection:

- Practice good hygiene by washing your hands
  - After using the bathroom
  - Before eating
  - Before touching your mouth or around your eyes

**Wednesday evening is expected to be clear and in the upper 30s overnight.**







6. Division   Branch		Area Location Capability		
<p>Identify crew EMTs on the line for each Division prior to engaging. In case of urgent situation, notify your supervisor and follow the MEDICAL INCIDENT REPORT "ICS 206" procedure on pages 118-120 in the 2022 IRPG. Notify operations of needs and location on command channel. Operations will notify NEWICC and base camp. Minimize radio traffic and maintain situational awareness.</p>				
<b>Div A</b>	EMS Responders &	Medic Richmond		
	Equipment Available on	ALS, AED, O2,		
	Medical Emergency	Command 1 (CMD) 1Secondary Command (CALSPL E)		
	ETA Ambo to Hospital	GROUND: 60Min	AIR: 20-45 min to Hospital	
	Ground:	Ambo at staging		
	Approved Helispot:	Drop Point: 10	Helispot: 1	
	Lat:	48 33.084°N		
	Long:	117 24.611°W		
<b>Div M/ Z</b>	EMS Responders &	REM 1		
	Equipment Available on	BLS, Vehicle extrication equipment, Rope rescue		
	Medical Emergency	Command 1 (CMD) 1Secondary Command (CALSPL E)		
	ETA Ambo to Hospital	GROUND: 60Min	AIR: 20-45 min to Hospital	
	Ground:	Ambo at staging		
	Approved Helispot:	Drop Point: 10	Helispot: 1	
	Lat:	48 33.084°N		
	Long:	117 24.611°W		
7. Name & Location				
<b>Staging Area</b>	EMS Responders &	Ambo 1		
	Equipment Available on	ALS, AED, O2,		
	Medical Emergency Channel:	Command 1 (CMD)	Secondary Command (CALSPL E)	
	ETA for Ambo to Hospital	GROUND: 60Min	AIR: 20-45 min to Hospital	
	Ground:	Staging Area		
	Approved Helispot:	Drop Point: 10	Helispot: 1	
	Lat:	48 33.084°N		
	Long:	117 24.611°W		
<b>Basecamp</b>	EMS Responders &	MEDL-(T) Richard Grajek		
	Equipment Available on	BLS first aid care		
	Medical Emergency Channel:	Command 1 (CMD)	Secondary Command (CALSPL E)	
	ETA for Ambo to Hospital	GROUND: 60Min	AIR: 20-45 min to Hospital	
	Air:	Local Air Medical Transport		
	Ground:	Local EMS Transport		
	Approved Helispot:	Helispot: 2		
	Lat:	48 20.778°N		
Long:	117 17.047°W			
8. Prepared By (Medical Unit Leader)		9. Date/Time	10. Reviewed By (Safety Officer)	11. Date/Time
Richard Grajek MEDL-(T) <i>[Signature]</i>		11:00 8/27/24	Brad Lidell SOFR <i>[Signature]</i>	8/27/24

# MEDICAL PLAN (ICS 206 WF)

Controlled Unclassified Information//Basic

## Medical Incident Report

**FOR A NON-EMERGENCY INCIDENT, WORK THROUGH CHAIN OF COMMAND TO REPORT AND TRANSPORT INJURED PERSONNEL AS NECESSARY.**

**FOR A MEDICAL EMERGENCY: IDENTIFY ON SCENE INCIDENT COMMANDER BY NAME AND POSITION AND ANNOUNCE "MEDICAL EMERGENCY" TO INITIATE RESPONSE FROM I/M COMMUNICATIONS/DISPATCH.**

Use the following items to communicate situation to communications/dispatch.

**1. CONTACT COMMUNICATIONS / DISPATCH (Verify correct frequency prior to starting report)**

*Ex: "Communications, Div. Alpha. Stand-by for Emergency Traffic."*

**2. INCIDENT STATUS: Provide incident summary (including number of patients) and command structure.**

*Ex: "Communications, I have a Red priority patient, unconscious, struck by a falling tree. Requesting air ambulance to Forest Road 1 at (Lat./Long.) This will be the Trout Meadow Medical, IC is TFLD Jones. EMT Smith is providing medical care."*

Severity of Emergency / Transport Priority	<input type="checkbox"/> <b>RED / PRIORITY 1</b> Life or limb threatening injury or illness. Evacuation need is <b>IMMEDIATE</b> <i>Ex: Unconscious, difficulty breathing, bleeding severely, 2<sup>nd</sup> - 3<sup>rd</sup> burns more than 4 palm sizes, heat stroke, disoriented.</i> <input type="checkbox"/> <b>YELLOW / PRIORITY 2</b> Serious Injury or illness. Evacuation may be <b>DELAYED</b> if necessary. <i>Ex: Significant trauma, unable to walk, 2<sup>nd</sup> - 3<sup>rd</sup> burns not more than 1-3 palm sizes.</i> <input type="checkbox"/> <b>GREEN / PRIORITY 3</b> Minor Injury or illness. Non-Emergency transport <i>Ex: Sprains, strains, minor heat-related illness.</i>	
Nature of Injury or Illness & Mechanism of Injury		Brief Summary of Injury or Illness <i>(Ex: Unconscious, Struck by Falling Tree)</i>
Transport Request		Air Ambulance / Short Haul/Hoist Ground Ambulance / Other
Patient Location		Descriptive Location & Lat. / Long. (WGS84)
Incident Name		Geographic Name + "Medical" <i>(Ex: Trout Meadow Medical)</i>
On-Scene Incident Commander		Name of on-scene IC of Incident within an Incident <i>(Ex: TFLD Jones)</i>
Patient Care		Name of Care Provider <i>(Ex: EMT Smith)</i>

**3. INITIAL PATIENT ASSESSMENT: Complete this section for each patient as applicable (start with the most severe patient)**

Patient Assessment See IRPG page 108

Treatment:

**4. TRANSPORT PLAN:**

Evacuation Location (if different): (Descriptive Location (drop point, intersection, etc.) or Lat. / Long.) Patient's ETA to Evacuation Location:

Helispot / Extraction Site Size and Hazards:

**5. ADDITIONAL RESOURCES / EQUIPMENT NEEDS:**

*Example: Paramedic/EMT, Crews, Immobilization Devices, AED, Oxygen, Trauma Bag, IV/Fluid(s), Splints, Rope rescue, Wheeled litter, HAZMAT, Extrication*

**6. COMMUNICATIONS: Identify State Air/Ground EMS Frequencies and Hospital Contacts as applicable**

Function	Channel Name/Number	Receive (RX)	Tone/NAC *	Transmit (TX)	Tone/NAC *
COMMAND					
AIR-TO-GRND					
TACTICAL					

**7. CONTINGENCY: Considerations: If primary options fail, what actions can be implemented in conjunction with primary evacuation method? Be thinking ahead.**

**8. ADDITIONAL INFORMATION: Updates/Changes, etc.**

**REMEMBER:** Confirm ETA's of resources ordered. Act according to your level of training. Be Alert. Keep Calm. Think Clearly. Act Decisively.