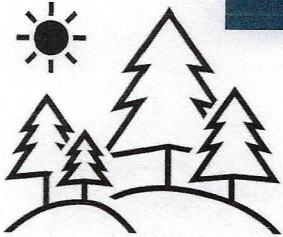


INCIDENT ACTION PLAN

UPPER RUBY FIRE



For maps, evaluations, and IAPs Scan the QR Code!



Friday, August 30, 2024

0600-2000 Operational Period

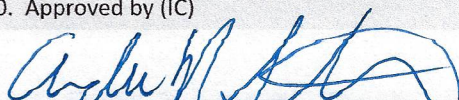
WA-COF-001850

AIR	Daily	Approval
DNR	%	
USFS	%	

221-BUE

P6 R6UC (0621) [P]

GROUND	Daily	Approval
DNR	%	
USFS	%	

Incident Objectives	1. Incident Name Upper Ruby	2. Date Prepared 8/29/2024	3. Time Prepared 1200
4. Operational Period (Date and Time) 8/30/2024 0600-2000			
5. General Control Objectives for the Incident (include Alternatives)			
<ul style="list-style-type: none"> • Provide for firefighter and public safety at all times. This includes the application of the "10 and 18", LCES, and the Risk Management Process. • Ensure structures and infrastructure are properly identified and mopped up around • Minimize acres burned. • Act professionally and in a manner that fosters good relationships with the public, private landowners, timber industry representatives, elected officials and other stakeholders. • Follow agency policies at all times and respect the policies of the host agency. • Maximize opportunities for cost savings without jeopardizing public or firefighter safety • Provide timely communications and accurate information as it becomes available. 			
6. Weather Forecast for Operational Period			
See attached weather forecast			
7. General Safety Message			
<ul style="list-style-type: none"> • Provide for firefighter and public safety at all times. • Monitor compliance of 10 and 18 by all incident personnel. • Adhere to 2:1 work/rest ratio for all fire line personnel. • Aviation safety is high priority. Assess the risk against the benefit of the mission. • Ensure all assigned personnel understand emergency medical reporting & transport procedures including locations of nearest emergency responders & facilities. 			
8. Attachments (check if attached)			
ICS-202	9. Prepared by (PSC) Brian Hansen	10. Approved by (IC) 	

ORGANIZATION ASSIGNMENT LIST			
1. Incident Name		Upper Ruby	
2. Date 8/29/2024		3. Time 1200	
4. Operational Period 8/30/2024 0600-2000		5. INCIDENT COMMANDER & STAFF	
		a. Division A	
Incident Commander	Andrew Stenbeck	Division Sup	Andrew Triolo
Safety Officer	Brad Lidell	TFLD	
Safety Officer	Mike Cook	b. Division M	
		Division Sup	Todd Dormaier
Medical Officer	Richard Grajek	TFLD	
Information Officer	Guy Gifford	c. Division Z	
Information Officer (t)		Division Sup	Todd Dormier
6. AGENCY REPRESENTATIVE		TFLD	
Agency	Name	d. EQUIPMENT	
USFS	Luke Decker	Division Sup	Jake Morse TFL(t)
USFS (t)	Marshell Moy	TFLD	
USFW	Cassie Roeder		
WA DNR	Pat Ryan		
7. PLANNING SECTION			
PSC	Dusty Patrick		
PSC (t)	Brian Hansen		
SITL (t)	Eric Krausz		
GISS	Kat Russell		
ITSS	Kyle Wagner		
10. FINANCE SECTION			
Comms Manager	Shawn Pichette	Chief	Tina Paccereilli
COMT	Bob Leaming	PTRC	Laurie Babbitt
RADO	Kerry Nyhuis		
RADO	David Yoppini		
Trailer	509-389-2002		
8. LOGISTICS SECTION		11. CONTACTS / OTHER INFORMATION	
Chief	Matt Lougy	NEWICC (509) 685-6900	
Chief (t)	Cole Shirley	wanec_expanded@firenet.gov	
		PSC(t)	
		Brian Hansen	

DIVISION ASSIGNMENT LIST				1. Branch		2. Division / Group			
3. Incident Name Upper Ruby				4. Operational Period Date: 8/30/2024 Time: 0600-2000					
5. Operations Personnel									
Operations Chief		Shawn Soliday			Planning Operations		Greg Anderson		
Safety Officer		Brad Lidell			Division/Group Supervisor		Andrew Triolo		
6. Resources Assigned this Period									
RO #	Strike Team/Task Force/Resource	Leader	# People	Contact (phone, radio freq, etc.)	EMT	LWD	Remarks		
O-7	TFLD	ANDREW TRIOLO	1	303-519-0302		9/4	Demob 8/31 0730		
C-7	CR2I-NW-COF-C101 THREE RIVERS	BRIANNA STROBEL	21						
C-11	CRW2 - TRI CITIES FORESTRY	ENRIQUE BARADAS	20	509-400-1745		9/8	Demob 8/31 0730		
C-12	CRW2 - KITTITAS 421	CHASE BREWER	20	509-856-5504		8/29	Demob 8/30 0700		
E-50	ENG3 - MSF - E312	SEAN HARRIS	7	360-410-5135		9/7			
		RYAN BIGBIE	3	509-314-9119		9/7			
E-52	ENG3 - RATTLESNAKE RIDGE 4169	FABIAN BRENERMAN		509-307-9029		9/7			
O-14	SMOD - REPUBLIC	GABE GIDDINGS	15			9/1			
E-44	WTS2 - PEND ORIELLE TENDER	PAT MILLER	1			9/5	Demob 8/31 0800		
O-46	EMPF	TIM RICHMOND	1			9/4			
			88						
7. Work Assignments									
8. Special Instructions									
E-11 AMB1 at Staging Area									
9. Communication Summary									
Function	Name	Mode	Frequency						
PRIMARY COMMAND	CMD 1	A	151.5125	N	186.2	158.4075	N	186.2	
SECONDARY	CALSPL-E	A	171.475	N	146.2	164.625	N	103.5	
ALPHA TAC	TAC 3	A	151.76	N	186.2	151.76	N	186.2	
EQUIPMENT TAC	TAC 6	A	151.625	N	186.2	151.625	N	186.2	
PRIMARY A/G	A/G PRIMARY	A	169.2	N	0	169.2	N	0	
SECONDARY A/G	A/G SECONDARY	A	167.95	N	0	167.95	N	0	
Prepared by (RESL) Eric Krausz			Approved by (PSC) Brian Hansen			Date: 8/29/2024		Time: 1200	

DIVISION ASSIGNMENT LIST			1. Branch		2. Division / Group			M/Z	
3. Incident Name Upper Ruby				4. Operational Period Date: 8/30/2024 Time: 0600-2000					
5. Operations Personnel									
Operations Chief			<i>Shawn Soliday</i>		Planning Operations		<i>Greg Anderson</i>		
Safety Officer			<i>Brad Lidell</i>		Division/Group Supervisor		<i>Todd Dormaier</i>		
6. Resources Assigned this Period									
RO #	Strike Team/Task Force/Resource	Leader	# People	Contact (phone, radio freq, etc.)	EMT	LWD	Remarks		
O-17	TFLD	SHANNON CLARK	1	360-770-4977		9/4	Demob 8/31 0630		
O-15	TFLD(t)	ROB BARR	1	505-377-8312		9/4	Demob 8/31 0630		
C-3	CR21 - NW - NES - HIGHLANDS - DNR	SCHERTENLIEB	21	509-675-6452	2	9/1	Demob 8/31 0645		
C-6	CRW1 - YUKON TERRITORIES	PIKE	20	867-334-3684	5	8/31	Demob 8/31 0645		
O-19	RED RIVER MOD	ZAC CHRISTOPHER	9	505-469-5041		9/4	Demob 8/31 0700		
E-18	ENG3 - ANGEL FIRE FD E3573	MICHEAL LUJAN	3	505-617-5828		9/4	Demob 8/31 0700		
E-19	ENG6 - COCHITI FD BRUSH 83	DOMINICK ORTIZ	4	505-400-5821		9/4	Demob 8/31 0700		
E-20	ENG6 - RUIDOSO FD 329203 - E 17	ALEC DAVIS	2	575-791-2053	2	9/4	Demob 8/31 0700		
E-21	ENG3 - FARMINGTON FD E31	CODY HILL	3	970-560-0650	1	9/4	Demob 8/31 0715		
O-29	HEQB	NEWMEIER	1	360-359-8552		8/29	Demob 8/30/ 0700		
			65						
7. Work Assignments									
8. Special Instructions									
E-11 AMB1 at Staging Area									
9. Communication Summary									
Function	Name	Mode	Frequency						
PRIMARY COMMAND	CMD 1	A	151.5125	N	186.2	158.4075	N	186.2	
SECONDARY COMMAND / MIKE TAC	CALSPL-E	A	171.475	N	146.2	164.625	N	103.5	
EQUIPMENT TAC	TAC 4	A	151.7	N	186.2	151.7	N	186.2	
	TAC 6	A	151.625	N	186.2	151.625	N	186.2	
PRIMARY A/G	A/G PRIMARY	A	169.2	N	0	169.2	N	0	
SECONDARY A/G	A/G SECONDARY	A	167.95	N	0	167.95	N	0	
Prepared by (RESL) Eric Krausz		Approved by (PSC) Brian Hansen			Date: 8/29/2024		Time: 1200		


DIVISION ASSIGNMENT LIST			1. Branch		2. Division / Group		EQUIPMENT		
3. Incident Name Upper Ruby			4. Operational Period Date: 8/30/2024 Time: 0600-2000						
5. Operations Personnel									
Operations Chief		<i>Shawn Soliday</i>		Planning Operations			<i>Greg Anderson</i>		
Safety Officer		<i>Brad Lidell</i>		Division/Group Supervisor			<i>Jake Morse TFL(t)</i>		
6. Resources Assigned this Period									
RO #	Strike Team/Task Force/Resource	Leader	# People	Contact (phone, radio freq, etc.)	EMT	LWD	Remarks		
E-12	WTS2 - ASPEN MOUNTAIN RESOURCES INC -	RICK	1	509-429-0374		9/5	Demob 8/31 0720		
E-15	WTT-PEND OREILLE COUNTY FIRE DISTRICT TENDER 43	JIM	1	509-315-7956		9/4			
E-7	DZR3 - TIGER TRUCKING - G01116	ROGER HIATT	1	509-679-2314		9/4	Demob 8/31 0720		
E-10	SKG2 - CHANTRY-50S645	AUBERT	2			9/4	Demob 8/31 0730		
E-17	EXC2 - ANDERSON EXCAVATION INC	TODD ANDERSON	1	509-721-0168			Demob 8/31 0730		
E-34	SKG1 - TIGER TRUCKING INC	HEATH	1	509-675-6903			Demob 8/31 0730		
O-6.7	GISS	TRENTON BARIBAULT	1			9/1	Demob 8/31 0730		
			8						
7. Work Assignments									
8. Special Instructions									
E-11 AMB1 at Staging Area									
9. Communication Summary									
Function	Name	Mode	Frequency						
PRIMARY COMMAND	CMD 1	A	151.5125	N	186.2	158.4075	N	186.2	
SECONDARY COMMAND /	CALSPL-E	A	171.475	N	146.2	164.625	N	103.5	
EQUIPMENT TAC	TAC 6	A	151.625	N	186.2	151.625	N	186.2	
ALPHA TAC	TAC 3	A	151.76	N	186.2	151.76	N	186.2	
MIKE TAC	TAC 4	A	151.7	N	186.2	151.7	N	186.2	
ZULU TAC	TAC 5	A	151.505	N	186.2	151.505	N	186.2	
PRIMARY A/G	A/G PRIMARY	A	169.2	N	0	169.2	N	0	
SECONDARY A/G	A/G SECONDARY	A	167.95	N	0	167.95	N	0	
Prepared by (RESL) Eric Krausz		Approved by (PSC) Brian Hansen			Date: 8/29/2024		Time: 1200		

INCIDENT RADIO COMMUNICATIONS PLAN 1-205

1. INCIDENT NAME	UPPER RUBY
2. DATE/TIME PREPARED	8/29/2024
3. OPERATIONAL PERIOD DATE/TIME	8/30/2024

4. BASIC RADIO CHANNEL UTILIZATION											
Ch #	Function	Channel Name	Assignment	RX Freq	N/W	RX Tone/NAC	TX Freq	N/W	TX Tone/NAC	Mode Analog (A) Digital (D) Mixed (M)	Remarks
1	COMMAND	CMD 1	CMD	151.5125	N	186.2	158.4075	N	186.2	A	PRIMARY COMMAND
2	COMMAND	CMD 2	CMD	154.5275	N	186.2	158.4000	N	186.2	A	FUTURE USE
3	TAC	TAC 3	DIV A	151.7600	N	186.2	151.7600	N	186.2	A	ALPHA TAC
4	TAC	TAC 4	DIV M	151.7000	N	186.2	151.7000	N	186.2	A	MIKE TAC
5	TAC	TAC 5	DIV Z	151.5050	N	186.2	151.5050	N	186.2	A	ZULU TAC
6	TAC	TAC 6	EQUIP	151.6250	N	186.2	151.6250	N	186.2	A	EQUIPMENT TAC
7	TAC	TAC 7		154.3025	N	0.0	154.3025	N	0.0	A	UNASSIGNED
8	COMMAND	CALSPL-E	CMD	171.4750	N	146.2	164.6250	N	103.5	A	SECONDARY COMMAND / IA COMMAND
9	TAC	COL TAC	TAC	167.3750	N	0.0	167.3750	N	146.2	A	IA TAC
10	TAC	FS TAC	TAC	168.2000	N	0.0	168.2000	N	0.0	A	IA TAC
11	TAC	DNR TAC 1	TAC	151.3100	N	103.5	151.3100	N	103.5	A	IA TAC
12	A/G	A/G PRIMARY	A/G P	169.2000	N	0.0	169.2000	N	0.0	A	PRIMARY A/G
13	A/G	A/G SECONDARY	A/G S	167.9500	N	0.0	167.9500	N	0.0	A	SECONDARY A/G
14	A/G	A/G 51	A/G IA	168.3125	N	0.0	168.3125	N	0.0	A	IA A/G
15	MEDEVAC A/G	VMED 29	MEDIVAC	155.3475	N	156.7	155.3475	N	156.7	A	AIR MEDICAL EVACUATION
16	AIRGUARD	AIRGUARD	EMERGENCY	168.6250	N	0.0	168.6250	N	110.9	A	EMERGENCY USE

5. Special Instructions: Communication Trailer Phone Number 24hrs 1-509-389-2002

6. 1-205 Prepared By: Communications Unit Leader **SHAWN PICHETTE** Name: **SHAWN PICHETTE** Signature: 

. DISCUSSION...

Warm high pressure will build over the Inland Northwest Friday and Saturday resulting in increasing temperatures, mostly clear skies, and light terrain driven winds. Thermal belts will lead to mild overnight temperatures in the mid-slopes and poor relative humidity recovery. Sunday and Monday will be the hottest days under the warm high-pressure ridge with highs in the mid to upper 80s at the fire. The arrival of a cold front on Monday night will bring increasing clouds and locally gusty ridgetop winds. Tuesday won't be as warm with highs mainly in the mid-70s to low 80s at the fire.

. FRIDAY...

Sky/weather.....Sunny.
CWR.....0 percent.
LAL.....1.
Max temperature....3100 ft 82 degrees
 3900 ft 77 degrees
Min humidity.....20-26 percent.
Wind (20 ft)Upslope/up valley 2 to 6 mph.
Mixing height.....Morning inversion weakening around 1000 pdt.
 Mixing height as high as 3200 ft AGL between
 1400 and 1800 pdt.
Transport winds.... Light winds becoming west 3 to 6 mph in the
 afternoon.
Haines Index.....3 Very Low.

. FRIDAY NIGHT...

Sky/weather.....Mostly clear.
CWR.....0 percent.
LAL.....1.
Min temperature....50-54.
Max humidity.....48 percent. Poor recovery.
Wind (20 ft)Downslope/down valley 2 to 5 mph.
Mixing height.....Falling to near the surface by 1930 pdt.
Transport winds.... Light winds.
Haines Index.....4 Low.

. SATURDAY...

Sky/weather.....Sunny.
CWR.....0 percent.
LAL.....1.
Max temperature....3100 ft 87 degrees
 3900 ft 83 degrees
Min humidity.....19-24 percent.
Wind (20 ft)Upslope/upvalley 2 to 6 mph.

IAP

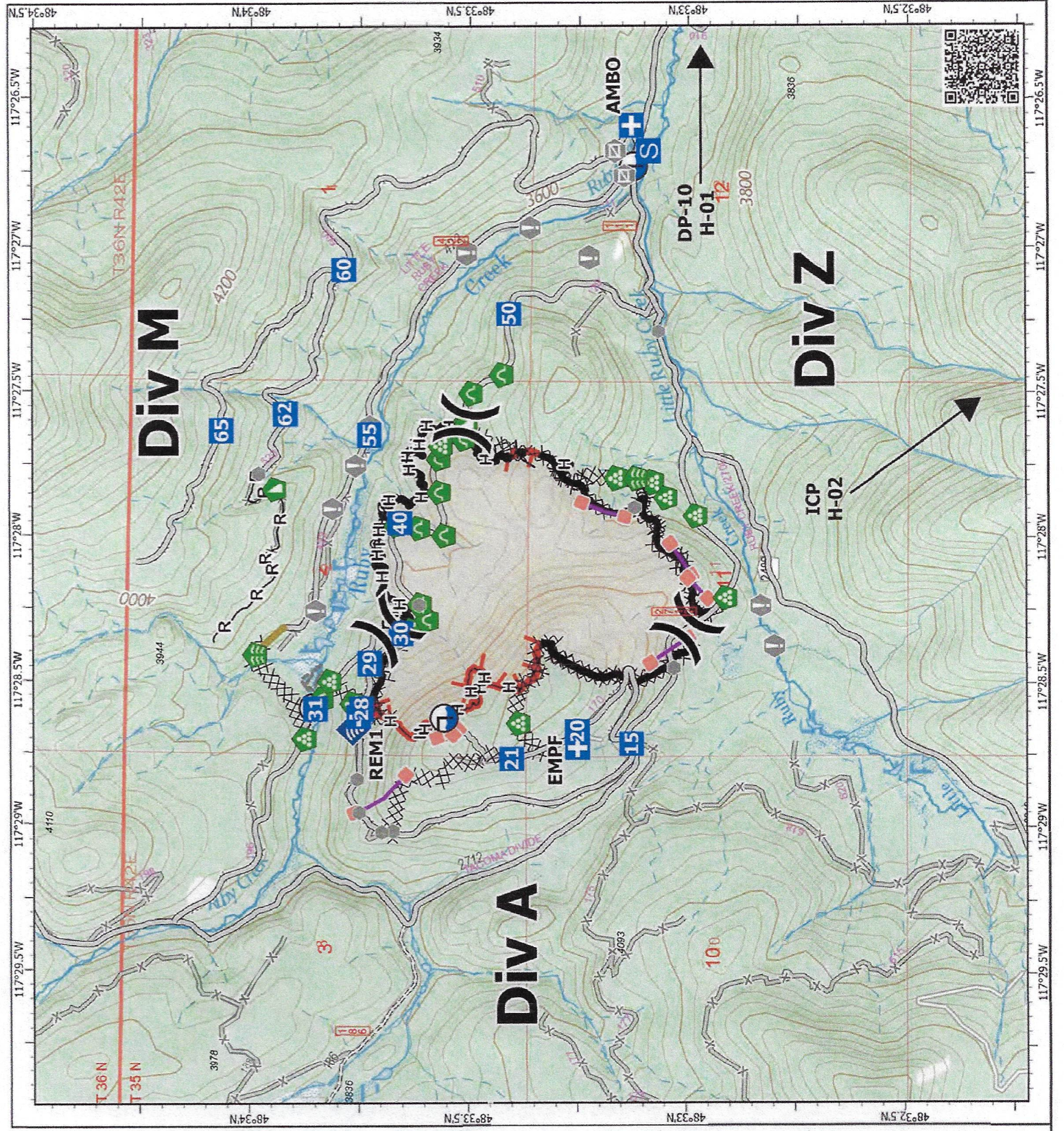
Upper Ruby
WACOF-001850
08/30/2024

280 acres at 08/26/2024 2001

- X Division Break
- Medical
- Drop Point
- Staging Area
- Value at Risk
- Other
- Gate
- Bridge
- Stream Crossing
- Landing or Log Deck
- Dozer Push
- Culvert
- Internet Access
- Draft Site
- Completed Burnout
- Completed Dozer Line
- Completed Hand Line
- Completed Road as Line
- Access Route
- Other
- Repair Line
- Retardant Drop
- Contained
- Uncontained
- Wildfire Daily Fire Perimeter



1:22,000 | TYPE 3 IMT NE3 | 8/28/2024 2046
Acres from IR and GPS
North American 1983 Datum, Lat/Long Grid





PLEASE FOLLOW ONE WAY TRAFFIC SIGNAGE

Please camp in designated areas only, away from vehicles.

Showers: 0500-1000 & 1800-2230

Breakfast: 0530-0730

Dinner: 1830-2100

Public Information

The following information can be given to the public if they need more information.

Public Information phone number 509-990-6218

Email: guy_gifford@firenet.gov

Inciweb: <https://inciweb.wildfire.gov/incident-information/wacof-upper-ruby>

Facebook: <https://www.facebook.com/newfireinfo>



Figure 1: Before Smokey Bear was used. A one year license with Disney allowed the use of Bambi for fire prevention. Because of the success of using Bambi it was decided that USFS needed their own mascot and Smokey Bear was created.

Repair Standards on the Colville National Forest

Hand line

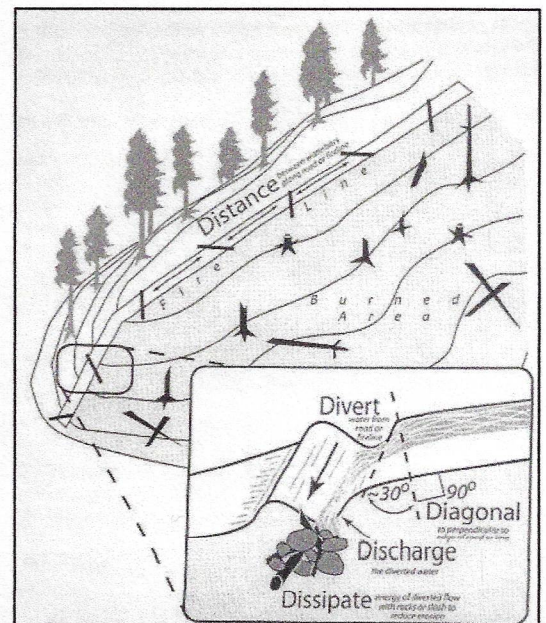
- Hand crews will be used to implement water bars.
- Pull berms and blend disturbed areas to fit the natural contours.
- Height of water bars should average 12 inches. Use natural dips and rolls where possible.
- Waterbar spacing guidelines.
 - < 15% - 150' spacing (distance apart)
 - 15 to 30% slope - 75' spacing
 - 30% to 45% - 50' spacing
 - > 45% slope - 25' spacing
- Construct water bars at 45-degree angle from the fire line, directing water into vegetated areas.
- Pull soil, litter, duff, debris, or grass removed from the line back onto the line, strive for 85% ground cover.
- Trenching should be filled in and the line restored to blend with the undisturbed soil contours.
- Visually obscure junction. Block road access to hand lines to discourage recreational use.

Dozer line

- Pull berms back into line, scatter branches, wood, rock, sod, or other material to naturalize the fire line and prevent soil erosion. When there is not enough material to cover 50% of bare mineral soil, water bars should be implemented.
- Use an **excavator** (Type II or Type III) with 2 to 3 cubic yard bucket & thumb, capable of working steep slopes (50 to 60%), 30 to 35 ft boom reach.
- Hand crews may be used to construct waterbars & spread material on slopes greater than 50%.
- Place water bars on dozer lines with the following general spacing guidelines, modify as needed to minimize soil erosion.
 - 5% to 20% slope – 120 to 150' spacing (distance apart)
 - 21% to 34% slope - 90' spacing
 - > 35% slope - 80' spacing.
- **Block access to dozer lines that leave from existing open roads w/ recontouring, boulders or natural large woody material to prevent OHV use.**
- Fire lines through wet areas/riparian zones need to be rehabbed by hand, Consult READ if needed on streams.

Waterbar Guidelines

- Distance/Spacing - The steeper the grade, the more frequent the placement of waterbars. Consider how much water will get captured by the line from the next uphill waterbar.
- Diagonal downhill – the waterbar should be installed at least 30 degrees, and up to 45 degrees, downhill of perpendicular across the line.
- Deep enough - at least 18" deep, so it won't get overtopped by the water coming down the line.
- Long enough - extends all the way from one edge of the line on the uphill side of the diagonal, and into the green on the downhill side. If it isn't all the way across the line on the upper side, runoff will flow around it.
- "Daylighted" - make sure the runoff from the 'bar can flow into the green and isn't obstructed by a berm or other blockage like root balls, slash.
- Dissipated - if the outlet has the potential to create a gully, build a small rock "garden" to dissipate the flow.



Resource Protection Standards

Dozer Standards

- Consult with REAFs if you have any concerns or questions.
- Dozer line maintained 50 feet from all creeks and water sources. Remaining line connected with hand line as needed.
- Dozers not to blade or walk across intermittent or active stream channels, wallows, wetlands, or other water sources if possible.
- Dozer line should use existing road templates if possible.

Water Drafting Standards

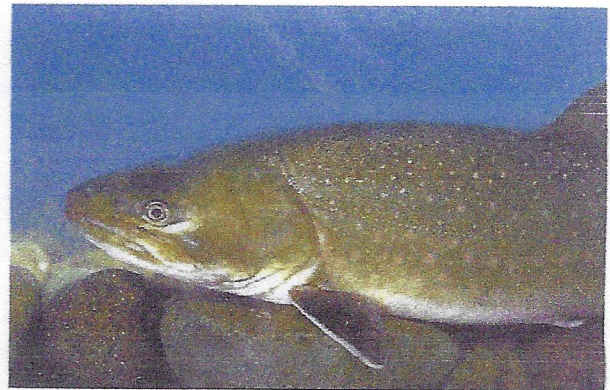
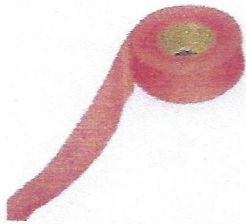
- Ensure all draft sites have fine screen mesh on intake hoses.
- Ensure containment aprons are under all pumps and gas.

Control Line

- If timber is cut for machine control line ensure it is felled/arranged in a manner so it can be removed for later decking and sale.

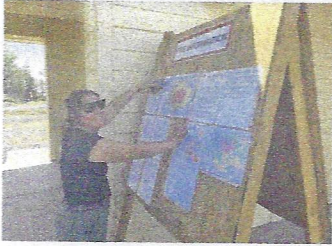
Ruby Fire Specifics

- Fire retardant avoidance areas located in Fieldmaps.
- Ruby Creek is Critical Habitat for Bull trout, an ESA listed species.
- Numerous archeology sites in proximity to fire. All sites have been flagged in pink flagging. Keep control lines out of sites. Please consult with REAFs if fire perimeter is expected to impact sites.



Information Station

Fire Hire is here! Are you interested in working for the U.S. Forest Service next fire season in 2025? If so, apply NOW through September 24th.



2025 FIRE HIRE

4 PACIFIC NORTHWEST REGION



FIRE HIRE is the Forest Service process for hiring the majority of our fire positions at the GS-3 through GS-9 grade level. The Pacific Northwest Region is looking for committed, hardworking individuals for fire and fuels management positions on 17 National Forests in Oregon and Washington. The fire and aviation program is very rewarding and requires working safely as part of a team in a variety of specialized positions, including dispatch, engine crews, fuels technicians, handcrews, helitack, hotshot crews, smokejumpers, and prevention.

**APPLY ON WWW.USAJOBS.GOV
Between: Aug. 23rd- Sept. 24th**



FOR MORE INFORMATION: visit <https://tinyurl.com/2p84bh9z> or scan the QR code.

Safety Message

Incident:
Upper Ruby Fire

Date:
August 30, 2024

Time:
Day Shift

Major Hazards and Risks:

Driving
Hazard Trees
Medical Emergencies
Hydration

Lookouts-Communications-Escape Routes-Safety Zones

Driving: When driving, you face some things beyond your control – wildlife, livestock, road rocks, falling trees and other drivers. You have control of your actions and the condition of your vehicle. Clean it and check conditions such as lights, tires, windshield, flashers and wipers. *Labor Day Weekend begins today so look for increased traffic, distracted drivers and a little alcohol influence...especially enroute back to ICP this evening.* Prepare mentally – patience, defensive driving, situational awareness, plan your route.

Hazard Trees: Over one week has passed since the fire began. Time has allowed more roots to burn. Winds have stressed the live trees. Equipment and chainsaws have affected some trees. Rain has loosened soils. *All of these forces may have changed a sound tree into a hazard tree.* Check your area, both the old work environment and the new one. Remember...every tree will fall one day...will it be today?

Medical Emergencies: Personnel and resources have changed. There is no longer a fire ambulance or REMS on scene. Two medical personnel will be on the fire. Know where they are and plan how you will manage a medical emergency. *Anticipate at least one hour for a local ambulance and two hours for a hoist helicopter to get to the fire.*

Hydration: Some sources report the human body is 65-75% water. Even more important is the location of body water. Over 50% of the body water is found in the brain and kidneys. If you are dehydrated, guess where it hits you the most! *Foggy minds and dark urine tell us to drink more water.* The good news is the body begins absorbing water within minutes.

*Finishing strong is a sign of commitment, integrity and excellence.
Finishing strong is about choice. Each of us has the power to choose
how we perform a job or a task and to finish strong.*

1. Incident/Project Name		2. Operational Period					
Upper Ruby		8/29/24 Day Shift					
3. Ambulance Services							
Name	Complete Address	Phone & EMS Frequency	Advanced Life Support (ALS)				
PO County FD #2	Blueslide/Tiger/Metaline Falls, WA	911/509-442-2311	<input checked="" type="checkbox"/> Yes	<input type="checkbox"/> No			
PO County FD #4	Dalkena, WA	911/509-447-2476	<input type="checkbox"/> Yes	<input checked="" type="checkbox"/> No			
Kalispel Tribal FD	Usk, WA	911	<input type="checkbox"/> Yes	<input checked="" type="checkbox"/> No			
South PO Fire and Rescue	Several locations in South PO County	911/509-447-5305	<input type="checkbox"/> Yes	<input checked="" type="checkbox"/> No			
4. Air Ambulance Services							
Name	Phone	Type of Aircraft & Capability					
Lifeflight Network, Spokane, WA	Call NEWICC / 800-232-0911	Advanced Life Support					
Airlift Northwest	Call NEWICC/	Advanced Life Support					
Fairchild AFB, Airway Hieghts, WA	Call NEWICC / 509-247-4051	Advanced Life Support					
Spokane County Sheriff	Call NEWICC/ 509-532-8900	Hoist ship, Advance Life Support, additional air ambulance for transport. 2hr to H1 Helia spot.					
5. Hospitals							
Name Complete Address	GPS Datum – WGS 84 Coordinate Standard Degrees Decimal Minutes DD° MM.MMM' N - Lat DD° MM.MMM' W - Long		Travel Time Air Gnd	Phone	Helipad		Level of Care Facility
	Lat:	Long:			VHF:	<input checked="" type="checkbox"/> Yes	
Newport Hospital; 714 Pine Street; Newport, WA	Lat:	N48 10.93		509-447-7928	<input checked="" type="checkbox"/> Yes	<input type="checkbox"/> No	Level 4 Trama Center
	Long:	W117 02.96					
	VHF:						
Providence Sacred Heart; 101 W 8th; Spokane, WA	Lat:	N47 38.95		509-474-3131	<input checked="" type="checkbox"/> Yes	<input type="checkbox"/> No	Level 2 Trama Center
	Long:	W117 24.78					
	VHF:						
Providence Holy Family; 5633 N. Lidgerwood, Spokane, WA	Lat:	N47 42.57		509-482-0111	<input checked="" type="checkbox"/> Yes	<input type="checkbox"/> No	Level 3 Trama Center
	Long:	W117 24.4					
	VHF:						
Deaconess Hospital; 800 W 5th Avenue, Spokane, WA	Lat:	N47 39.1		509-458-5800	<input checked="" type="checkbox"/> Yes	<input type="checkbox"/> No	Level 3 Trama Center
	Long:	W117 25.46					
	VHF:						
Harborview Medical Center; 325 9th Avenue, Seattle, WA	Lat:	N47 36.1		206-744-3000 Emergency # 206-744-4074	<input checked="" type="checkbox"/> Yes	<input type="checkbox"/> No	Level 1 Trama Center Burn Center
	Long:	W121 19.3					
	VHF:						
	Lat:				<input type="checkbox"/> Yes	<input type="checkbox"/> No	
	Long:						
	VHF:						

6. Division Branch		Area Location Capability		
<p>Identify crew EMTs on the line for each Division prior to engaging. In case of urgent situation, notify your supervisor and follow the MEDICAL INCIDENT REPORT "ICS 206" procedure on pages 118-120 in the 2022 IRPG. Notify operations of needs and location on command channel. Operations will notify NEWICC and base camp. Minimize radio traffic and maintain situational awareness.</p>				
Div A	EMS Responders &	Medic Richmond		
	Equipment Available on	ALS, AED, O2,		
	Medical Emergency	Command 1 (CMD) 1Secondary Command (CALSPL E)		
	ETA Ambo to Hospital	GROUND: 60Min	AIR: 20-45 min to Hospital	
	Ground:	Ambo at staging		
	Approved Helispot:	Drop Point: 10	Helispot: 1	
	Lat:	48 33.084'N		
	Long:	117 24.611'W		
Div M/ Z	EMS Responders &	MEDL-(T) Richard Grajek		
	Equipment Available on	BLS		
	Medical Emergency	Command 1 (CMD) 1Secondary Command (CALSPL E)		
	ETA Ambo to Hospital	GROUND: 60Min	AIR: 20-45 min to Hospital	
	Ground:	Ambo at staging		
	Approved Helispot:	Drop Point: 10	Helispot: 1	
	Lat:	48 33.084'N		
	Long:	117 24.611'W		
7. Name & Location				
Staging Area	EMS Responders &	Local Fire and EMS departments		
	Equipment Available on	ALS and BLS care		
	Medical Emergency Channel:	Command 1 (CMD)	Secondary Command (CALSPL E)	
	ETA for Ambo to Hospital	GROUND: 60Min	AIR: 20-45 min to Hospital	
	Ground:	Staging Area		
	Approved Helispot:	Drop Point: 10	Helispot: 1	
	Lat:	48 33.084'N		
	Long:	117 24.611'W		
Basecamp	EMS Responders &	Local Fire and EMS departments		
	Equipment Available on	ALS and BLS care		
	Medical Emergency Channel:	Command 1 (CMD)	Secondary Command (CALSPL E)	
	ETA for Ambo to Hospital	GROUND: 60Min	AIR: 20-45 min to Hospital	
	Air:	Local Air Medical Transport		
	Ground:	Local EMS Transport		
	Approved Helispot:	Helispot: 2		
	Lat:	48 20.778'N		
Long:	117 17.047'W			
8. Prepared By (Medical Unit Leader)		9. Date/Time	10. Reviewed By (Safety Officer)	11. Date/Time
Richard Grajek MEDL-(T) <i>R. Grajek</i>		1120 8/29/24	Mike Cook SOFR <i>Michael Cook</i>	1120 8/29/24

MEDICAL PLAN (ICS 206 WF)

Controlled Unclassified Information//Basic

Medical Incident Report

FOR A NON-EMERGENCY INCIDENT, WORK THROUGH CHAIN OF COMMAND TO REPORT AND TRANSPORT INJURED PERSONNEL AS NECESSARY.

FOR A MEDICAL EMERGENCY: IDENTIFY ON SCENE INCIDENT COMMANDER BY NAME AND POSITION AND ANNOUNCE "MEDICAL EMERGENCY" TO INITIATE RESPONSE FROM IMT COMMUNICATIONS/DISPATCH.

Use the following items to communicate situation to communications/dispatch.

1. CONTACT COMMUNICATIONS / DISPATCH (Verify correct frequency prior to starting report)

Ex: "Communications, Div. Alpha. Stand-by for Emergency Traffic."

2. INCIDENT STATUS: Provide incident summary (including number of patients) and command structure.

Ex: "Communications, I have a Red priority patient, unconscious, struck by a falling tree. Requesting air ambulance to Forest Road 1 at (Lat./Long.) This will be the Trout Meadow Medical, IC is TFLD Jones. EMT Smith is providing medical care."

Severity of Emergency / Transport Priority	<input type="checkbox"/> RED / PRIORITY 1 Life or limb threatening injury or illness. Evacuation need is IMMEDIATE Ex: Unconscious, difficulty breathing, bleeding severely, 2 ^o - 3 ^o burns more than 4 palm sizes, heat stroke, disoriented. <input type="checkbox"/> YELLOW / PRIORITY 2 Serious Injury or illness. Evacuation may be DELAYED if necessary. Ex: Significant trauma, unable to walk, 2 ^o - 3 ^o burns not more than 1-3 palm sizes. <input type="checkbox"/> GREEN / PRIORITY 3 Minor Injury or illness. Non-Emergency transport Ex: Sprains, strains, minor heat-related illness.	
Nature of Injury or Illness & Mechanism of Injury		Brief Summary of Injury or Illness (Ex: Unconscious, Struck by Falling Tree)
Transport Request		Air Ambulance / Short Haul/Hoist Ground Ambulance / Other
Patient Location		Descriptive Location & Lat. / Long. (WGS84)
Incident Name		Geographic Name + "Medical" (Ex: Trout Meadow Medical)
On-Scene Incident Commander		Name of on-scene IC of Incident within an Incident (Ex: TFLD Jones)
Patient Care		Name of Care Provider (Ex: EMT Smith)

3. INITIAL PATIENT ASSESSMENT: Complete this section for each patient as applicable (start with the most severe patient)

Patient Assessment: See IRPG page 106

Treatment:

4. TRANSPORT PLAN:

Evacuation Location (if different): (Descriptive Location (drop point, intersection, etc.) or Lat. / Long.) Patient's ETA to Evacuation Location:

Helispot / Extraction Site Size and Hazards:

5. ADDITIONAL RESOURCES / EQUIPMENT NEEDS:

Example: Paramedic/EMT, Crews, Immobilization Devices, AED, Oxygen, Trauma Bag, IV/Fluid(s), Splints, Rope rescue, Wheeled litter, HAZMAT, Extrication

6. COMMUNICATIONS: Identify State Air/Ground EMS Frequencies and Hospital Contacts as applicable

Function	Channel Name/Number	Receive (RX)	Tone/NAC *	Transmit (TX)	Tone/NAC *
COMMAND					
AIR-TO-GRND					
TACTICAL					

7. CONTINGENCY: Considerations: If primary options fail, what actions can be implemented in conjunction with primary evacuation method? Be thinking ahead.

8. ADDITIONAL INFORMATION: Updates/Changes, etc.

REMEMBER: Confirm ETA's of resources ordered. Act according to your level of training. Be Alert. Keep Calm. Think Clearly. Act Decisively.