

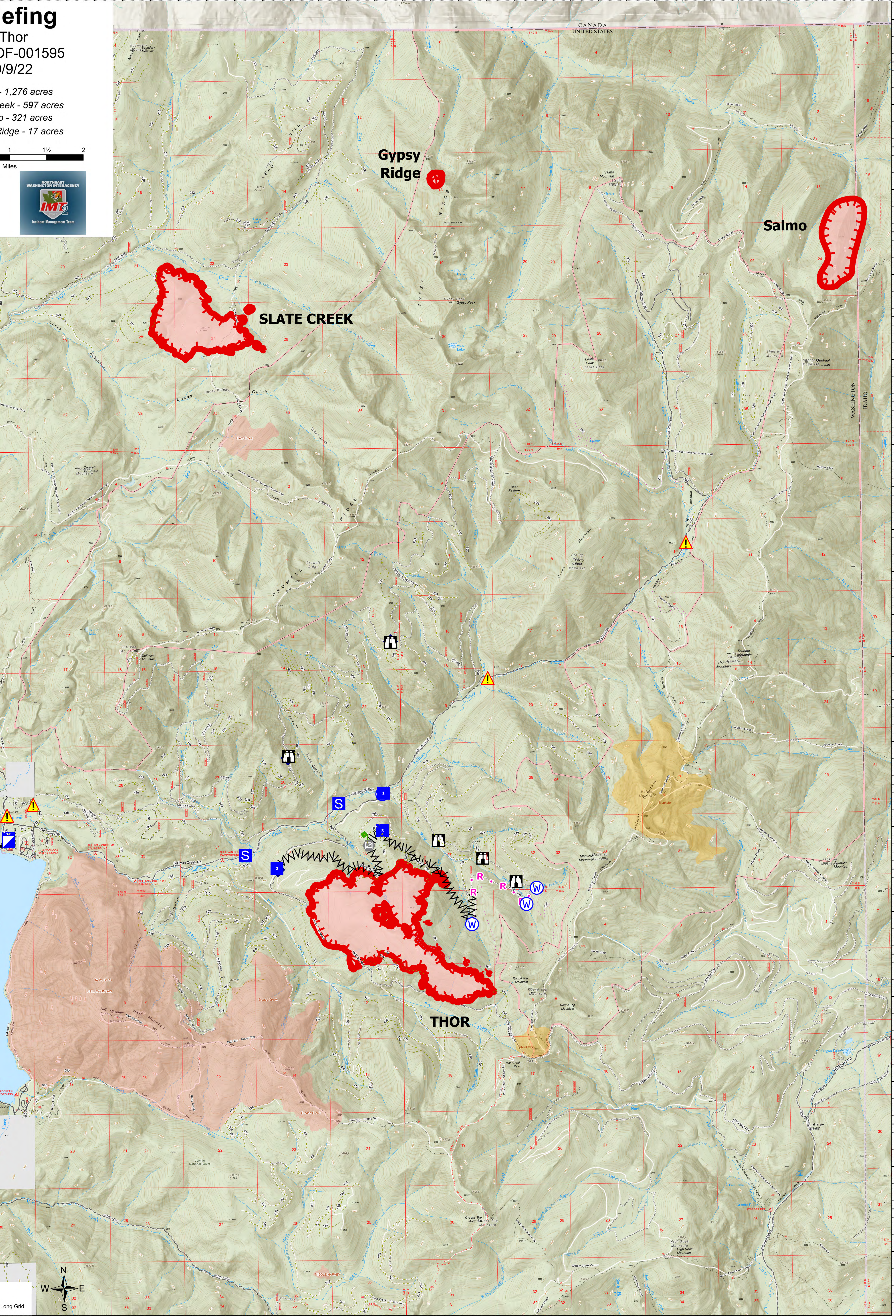
# Briefing

Thor  
WACOF-001595  
9/9/22

Thor - 1,276 acres  
Slate Creek - 597 acres  
Salmo - 321 acres  
Gypsy Ridge - 17 acres



- Incident Command Post
- Drop Point
- Camp
- Staging Area
- Lookout
- Gate
- Mobile Weather Unit
- Hazard
- Water Source
- Building
- Campground
- Lookout - Permanent
- Picnic Area
- Ranger District Office
- Highway
- Road - Light Duty - Dirt
- Road - Light Duty - Gravel
- Road - Light Duty - Paved
- Road - Unimproved
- Trail
- Trail - Nat Rec/Scenic/Historic
- Closed Roads
- Decommissioned
- Wildfire Daily Fire Perimeter
- Non-FS Lands
- National Wilderness Area
- 2010-2019
- 1990-1999



TLC  
9/9/2022 1257  
Acres from IR  
North American 1983 Datum, Lat/Long Grid

