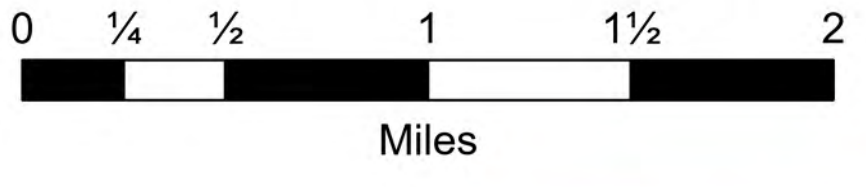


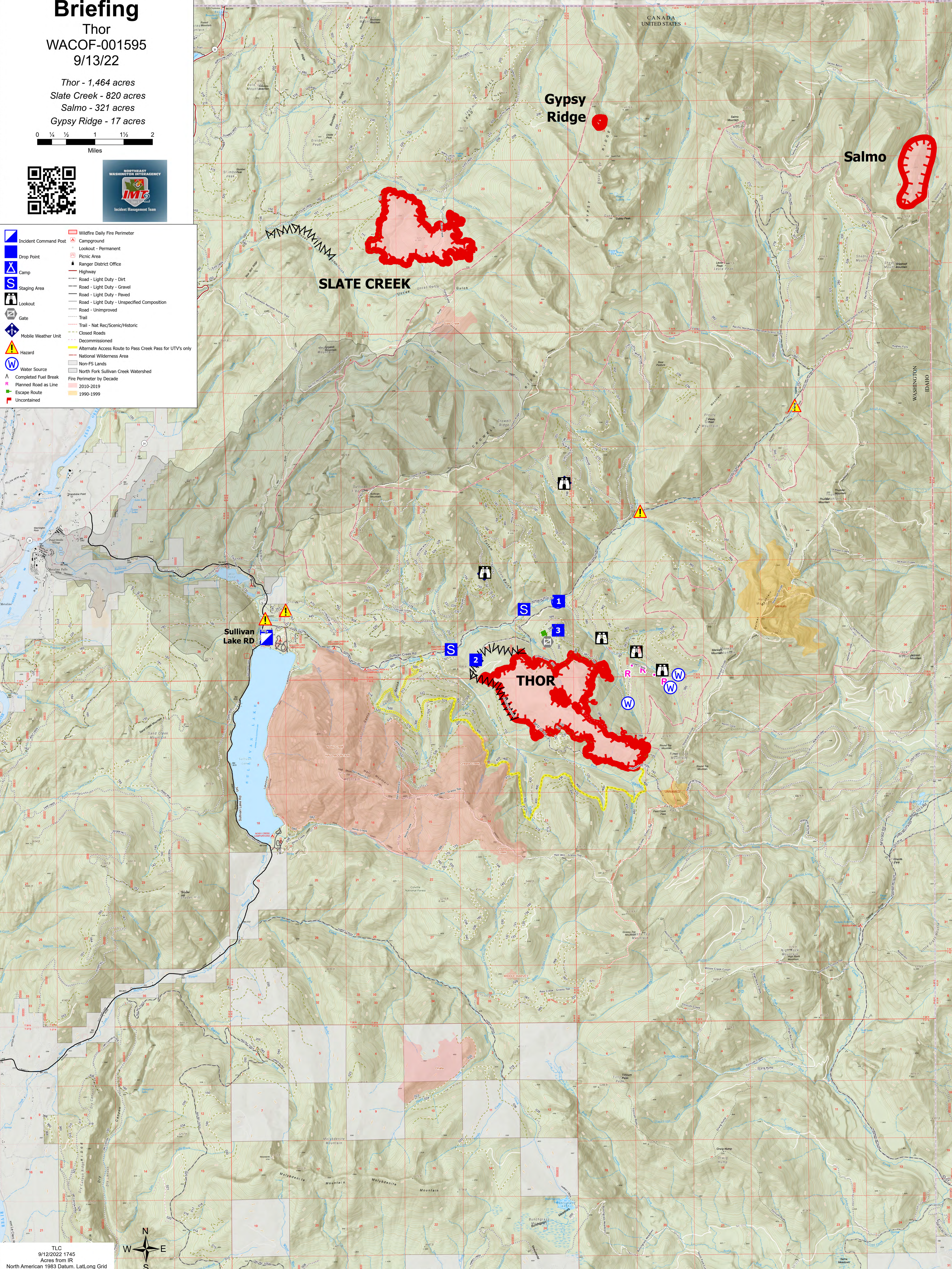
Briefing

Thor
WACOF-001595
9/13/22

Thor - 1,464 acres
Slate Creek - 820 acres
Salmo - 321 acres
Gypsy Ridge - 17 acres



| | | | |
|--|-----------------------|--|--|
| | Incident Command Post | | Wildfire Daily Fire Perimeter |
| | Drop Point | | Campground |
| | Camp | | Lookout - Permanent |
| | Staging Area | | Picnic Area |
| | Lookout | | Ranger District Office |
| | Gate | | Highway |
| | Mobile Weather Unit | | Road - Light Duty - Dirt |
| | Hazard | | Road - Light Duty - Gravel |
| | Water Source | | Road - Light Duty - Paved |
| | Completed Fuel Break | | Road - Light Duty - Unspecified Composition |
| | Planned Road as Line | | Road - Unimproved |
| | Escape Route | | Trail |
| | Uncontained | | Trail - Nat Rec/Scenic/Historic |
| | | | Closed Roads |
| | | | Decommissioned |
| | | | Alternate Access Route to Pass Creek Pass for UTV's only |
| | | | National Wilderness Area |
| | | | Non-FS Lands |
| | | | North Fork Sullivan Creek Watershed |
| | | | Fire Perimeter by Decade |
| | | | 2010-2019 |
| | | | 1990-1999 |



TLC
9/12/2022 1745
Acres from IR
North American 1983 Datum, Lat/Long Grid

