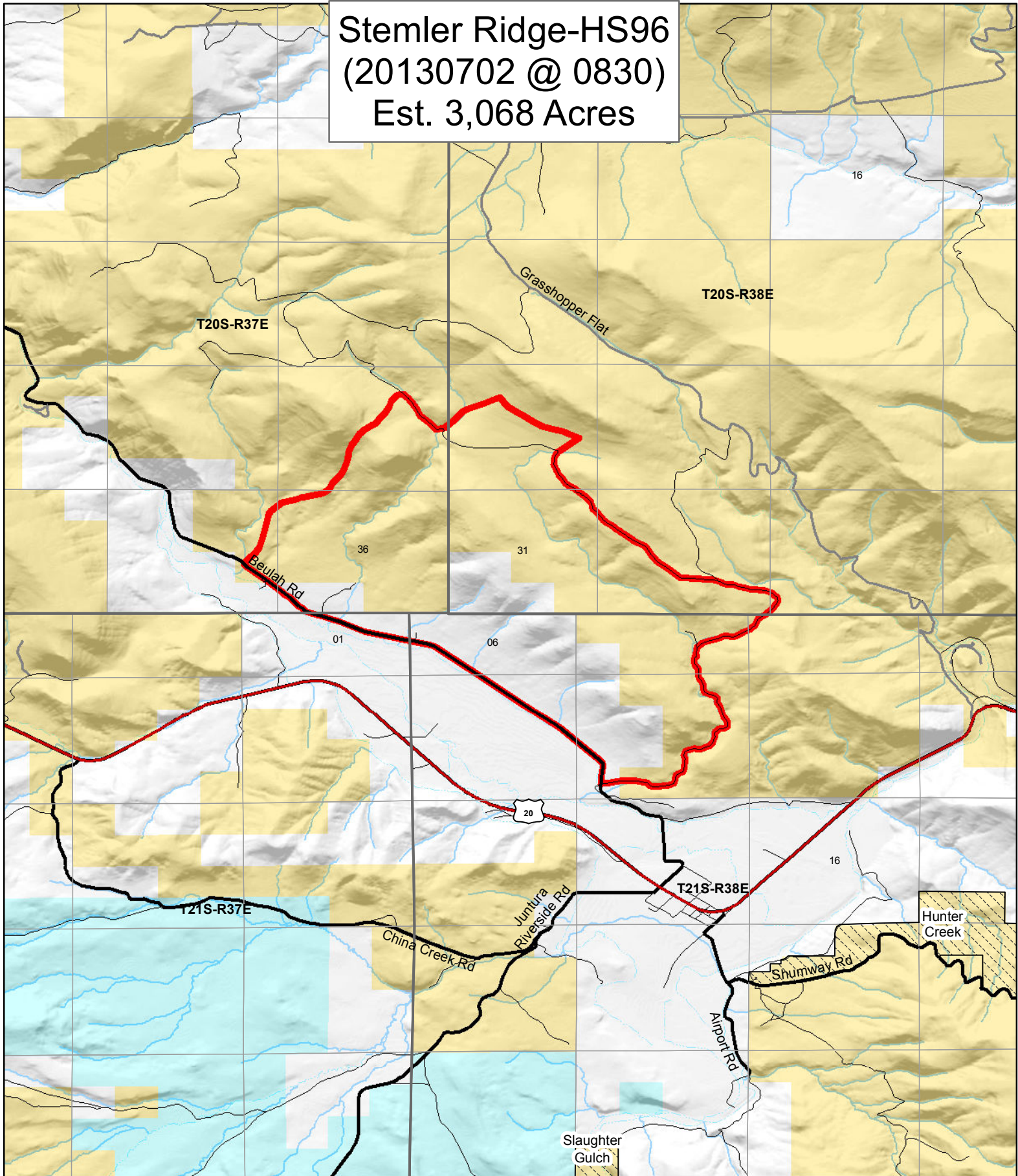


Stemler Ridge-HS96 (20130702 @ 0830) Est. 3,068 Acres

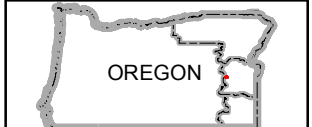


Legend

- Stemler Ridge Fire 0830
- INT
- STH
- USH
- County route
- Bureau of Land Management
- Forest Service
- Private road (no symbol)
- Not Known
- Areas of Critical Environmental Concern
- Lands With Wilderness Characteristics
- Wilderness Study Area

Miles
0 0.25 0.5 1

| | |
|--|--|
| <ul style="list-style-type: none"> BLM BOR Bureau of Indian Affairs U.S. Forest Service Private State Lands | <ul style="list-style-type: none"> U.S. Fish and Wildlife Service WATER |
|--|--|



U.S. Department of Interior
Bureau of Land Management

Vale District
August 1, 2013

No warranty is made by the Bureau of Land Management as to the accuracy, reliability, or completeness of these data of individual or aggregate use with other data. Original data were compiled from various sources. This information may not meet National Map Accuracy Standards. This product was developed through digital means and may be updated without notification.