

Bald Sisters Fire

WEDNESDAY August 20, 2014
Day Operations
0600-2000



Meeting schedule
0600 Ops Briefing
1000 Command & General Staff
1700 Pre-Strat meeting
1800 Planning Meeting

OR-MAF-014295
FS Code = P6JAF2
OR 0604

Incident Commander, Mike Quesinberry
Bea Day ICT1 (t)

Use for GPS: NAD 83 DEGREES DECIMAL MINUTES

Incident Objectives	1. Incident Name	2. Date Prepared	3. Time Prepared
	BALD SISTERS	08/19/14	2100

4. Operational Period
08/20/14 Wednesday DAY Shift 0600 - 2000

5. General Control Objectives for the incident (include alternatives)

Task:
Implement a full suppression strategy, utilizing both direct and indirect tactics as weather and fire conditions dictate. Take actions only when they can be completed safely and with a high probability of success.

Purpose:
 *Limit risk and exposure to firefighters by limiting the need to engage fire in beetle killed areas.
 *Limit damage to critical aquatic habitat for Bulltrout, Steelhead, and Chinook.
 *Limit damage to range allotments, fencing and other improvements.
 *Prevent fire from reaching active timber sales on the Wallowa Whitman.
 *Limit damage to the North Fork of the Malheur Wild and Scenic River.
 *Prevent fire from damaging infrastructure, specifically the Elkhorn Communication site on the FS2652 Rd, the attached powerline, the Mammoth Springs Campground, Tamarack Springs Campground, and South Fork Campground, and Table Rock Lookout.
 *Minimize smoke impacts to the area communities of Unity and Prairie City.

End State:
 Minimize acres burned, keeping fire out of the Glacier Mountain Inventoried Roadless Area (IRA), confining fire west of the Wallowa-Whitman boundary, suppressing fire before it reaches the National Wild and Scenic River corridor along the North Fork of the Malheur, and using existing forest system roads to contain the fire North and East within the planning area.

Incident Objectives:



- * Utilize systematic risk management to provide for the well being of incident personnel and the public while implementing reasonable operational objectives commensurate with values at risk and probability of success.
- * Listen to and communicate with those affected by this incident. Local landowners and residents, community leaders, public agencies, and cooperators can provide valuable insight for success; positive relationships are valued.
- * Manage the fire cost-effectively commensurate with the values to be protected.
- * Manage the human resources in a manner that promotes a positive and harassment free work environment and creates a "no tolerance" atmosphere for harassment, alcohol, or illegal drug use and treats all assigned personnel with dignity and respect.
- * Provide inter-agency training opportunities to strengthen our organizational capabilities.

6. Weather Forecast for Period
See weather forecast.

7. General Safety Message
See safety message.

8. Attachments (mark if attached)

<input checked="" type="checkbox"/> Organization List - ICS 203	<input checked="" type="checkbox"/> Incident Map	<input type="checkbox"/>
<input checked="" type="checkbox"/> Div. Assignment Lists - ICS 204	<input checked="" type="checkbox"/> Safety Message	<input type="checkbox"/>
<input checked="" type="checkbox"/> Communications Plan - ICS205	<input checked="" type="checkbox"/> Traffic Plan	<input type="checkbox"/>
<input checked="" type="checkbox"/> Medical Plan - ICS 206	<input type="checkbox"/>	<input type="checkbox"/>
<input checked="" type="checkbox"/> Air Operations Summary - ICS 220	<input type="checkbox"/>	<input type="checkbox"/>

9. Prepared by (Planning Section Chief) Dana Carter PSC1 (t) 	10. Approved by (Incident Commander) Bea Day ICT1 (t) 
---	--

ORGANIZATION ASSIGNMENT LIST

1. Incident Name
BALD SISTERS

2. Date Prepared
08/19/14

3. Time Prepared
2100

4. Operational Period
08/20/14 Wednesday DAY Shift 0600 - 2000

Position	Name
5 Incident Commander and Staff	
Incident Commander	MICHAEL QUESINBERRY
Incident Commander (t)	BEA DAY
Safety Officer	EUGENE J MADDEN; C NOSIE JR (t); D CHAPMAN (t)
Information Officer	JUDITH L DOWNING; ARLENE PEREA (t)
Liaison Officer	DON HOWARD; BEN FISK

6 Agency Representative

Agency	Name
Malhuer NF Supervisor	T. RAAF
Malhuer NF FMO	R. WALKER
Malhuer NF Agency Rep.	R. GOULD, C. CHEYNE
R8 IARR	ELMER OROSCO
READ	SCOTT BODLE COLLEEN MALANEY

7 Planning Section

Chief	ELIZABETH CAVASSO
Chief (t)	DANA CARTER (PSC1 t)
Resources Unit	KURT WETZSTEIN
Situation Unit	TODD BENTLEY; TROY LUTRICK
Documentation Unit	PHILIP SETTLES
Demobilization Unit	JAMES COOLEY
Fire Behavior Analyst	ROBB BEERY
Human Resource Specialist	ANA PARADA
Training Specialist	MICHAEL WILSON
GIS Specialist	KARI GROMATZKY; KEVIN WINTER
Long Term Analyst	TESSA NICOLET; DANA SKELLY(t)
Computer Specialist	BLAKE MILLER
Incident Meteorologist	AMANDA GRANING

8 Logistics Section

Chief	SALLY BROWNING
Chief	TJ GIRON (LSC1 t); SHARON TAUBE (LSC2 t)
Supply Unit	ALBERT COLLAR
Facilities Unit	TIMOTHY DURBY; DANIEL COMELLA
Ground Support Unit	JOE PETTY; KEVIN DODDS (t)
Communications Unit	STEPHEN STRATE
Medical Unit	JEFF HATCH; STEVE CANNON (t)
Security Unit	WILL BURNER; GARY SIMPSON(t)
Food Unit	DALE THOMPSON

9 Operations Section

FIELD OPS J.Truett; Duane Tewa	CLAWSON OSC1(t), GESSER OSC2(t)
PLANNING OPS	WILLIS OSC1(t), THISSEL OSC2(t)

a: Division/Groups

Branch Director	
Deputy	
Division/Group A	CARY TAYLOR
Division/Group Z	TOBY COOK
Division/Group	
Division/Group	
Division/Group	

b: Branch III - Division/Groups

Branch Director	AARON HULBURD
Deputy	
Division/Group E	DAN BETTS
Division/Group	
Division/Group	
Division/Group	
Division/Group	

c: Branch V - Division/Groups

Branch Director	AARON HULBURD
Deputy	
Division/Group TV	KEN WATKINS / DANA BAGNOLI (t)
Division/Group	
Division/Group INITIAL ATTACK	JON MILES; DOUG CATES(t)
Division/Group	
Division/Group	

d: Air Operations Branch

Air Operations Branch Director	BRUCE WICKS
Helibase Manager	
Air Attack Supervisor	PETE DREILING
Air Support Supervisor	
Helicopter Coordinator	
Air Tanker Coordinator	

10 Finance Section

Chief	JUDY PALMER
Chief	JAMIE WADE (FSC1 t)
Time Unit	
Procurement Unit	MICHAEL CARICO
Compensation/Claims Unit	GLORIA MCCABE
Cost Unit	

Prepared by (Resource Unit Leader)
KURT WETZSTEIN



Incident Weather Forecast



FORECAST NO: 11
PREDICTION FOR: Day shift
SHIFT DATE: Wednesday, August 20, 2014

NAME OF INCIDENT: Bald Sisters Fire
UNIT: OR-MAF-014295
SIGNED: *Amanda Graning*
Incident Meteorologist

TIME AND DATE
FORECAST ISSUED: 1800 PDT Tuesday, August 19, 2014

WEATHER DISCUSSION:

Cooler air will gradually sink into the region through the remainder of the week. Below normal temperatures will prevail with generally northwest winds. The unstable air mass will keep small chances for afternoon showers and thunderstorms into the upcoming weekend.

*** Gusty and Erratic Winds Near Thunderstorms ***

WEATHER FORECAST: Today (Wednesday)

WEATHER: Partly Cloudy. Slight chance for afternoon showers.
TEMPERATURES: 70-75 ridges...80 valleys (down 5-8)
MIN HUMIDITY: 20-30% (up 5-8%)
20 FT WINDS (mph): West 5 to 10G15 mph ridges...upslope 5 to 10 mph valleys
HAINES INDEX: 4 (Low). LAL of 1
STABILITY/INVERSION: Weak Inversion dissipating around 1100 hours

Tonight:

WEATHER: Partly Cloudy.
TEMPERATURES: 45-50
MAX HUMIDITY: 70%
WIND (20 Foot): West 3 to 7.

OUTLOOK FOR Thursday:

WEATHER: Mostly Sunny.
TEMPERATURES: 70 ridges...80 valleys (down 5)
MIN HUMIDITY: 20-25% ridges... 15-20% valleys (up 5-8%)
20 FT WINDS (mph): West 5 to 10G15 mph ridges...upslope 6 to 10 mph valleys
HAINES INDEX: 4 (Low). LAL of 1
STABILITY/INVERSION: Weak Inversion dissipating around 1100 hours

EXTENDED FORECAST:

Friday and Saturday: Partly Cloudy. Slight chance for thunderstorms. Max temperatures around 70 F. Min RH 25-35%. northwest winds 10-15 mph with higher gusts, Overnight RH recovery 70-80%.

EXTRA INFORMATION: Observations from Tuesday, August 19, 2014 (as of 600 pm):


Fire elevation ~6000-7000 ft)

- | | |
|-------------------------------------|--|
| • Bald Sisters RAWs (8145 ft) | Temp: MAX: 76, RH MIN: 25% Wind (20ft): NW 7G18 mph. |
| • Fall Mountain (Ridgetop 5949 ft) | Temp: MAX: 77, RH MIN: 31% Wind (20ft): NW 10 G22 mph. |
| • Grant Co Airport (Valley 3697 ft) | Temp: MAX: 86, RH MIN: 23% Wind (20ft): NW 13 G22 mph. |
| • Crane Prairie (5500 ft) | Temp: MAX: 82, RH MIN: 21% Wind (20ft): NW 8 G19 mph. |



Scan Smart phone for current Observations near the fire.

FIRE BEHAVIOR FORECAST

FORECAST NUMBER: 14	TYPE OF FIRE: Wildfire
FIRE NAME: Bald Sisters	OPERATIONAL PERIOD: 8/20/2014, Day
DATE ISSUED: 8/19/2014	TIME ISSUED: 2100
UNIT: ORMAF-014295	SIGNED: 
Prepared By: Robb Beely, EBAN (928) 595-0442	

WEATHER SUMMARY:

Today: Partly cloudy, slight chance for showers, Min RH 20-30%, Max Temp 70-75, Winds W 5-10 G15, Haines 4, LAL 1

Tonight: Partly cloudy, Max. RH 60-70%, Temp 50, Winds W 4-8

Thursday: Mostly sunny, Min RH 20-25, Max Temp 70-75, Winds W5-10 G 15, Haines 4, LAL 1

FIRE BEHAVIOR

GENERAL:

Should have minimal fire behavior with the interior heavy fuels consuming. There shouldn't be any perimeter movement but keep a heads up late in the afternoon during the burn period. RH's will be dropping to 20-25 this afternoon but the winds will moderate.

SPECIFIC:

South side of the fire:

Fire activity on the Southern aspect of the fire should be minimal. With the Westerly winds, the fire area along the 1344 rd. will start showing smoke first. This should be interior, minimal and not be a factor

West Side of the fire:

This area is still showing 10-15 acres of heavy dead and down fuels consuming, this should not show much, if any movement today but will show smoke later in the day.

North side of the fire:

Minimal isolated heat has still been showing up in the afternoons, this is interior and should not be a factor other than showing smoke in the afternoon.

East side of the fire:

The few isolated heavy's that are still burning in the Deardorff drainage should show minimal smoke this afternoon and continue consuming available dead and down fuels. This area should show very minimal fire activity all day.

Initial Attack: Expect spread rates in the timber of up to 20 ch/hr and in the grass 50 ch/hr. All flame heights will be higher than 4'. Outflow winds will dramatically increase the rates of spread.

AIR OPERATIONS:

Should be minimal inversion that breaks by 11:00

SAFETY

"Success breeds complacency. Complacency breeds failure. Only the paranoid survive;"
- Andrew Grove

Keep your SA up and complacency down by becoming paranoid about safety

Division Assignment List	1. Branch	2. Division/Group A
---------------------------------	-----------	-------------------------------

3. Incident Name BALD SISTERS	4. Operational Period 08/20/14 Wednesday DAY Shift 0600 - 2000
---	--

5. Operations Personnel

Operations Chief	JOHN TRUETT	Division/Group Supervisor	CARY TAYLOR
Operations Chief (OSC1)	DARRELL WILLIS (I); JASON CLAWSON (I); DJANE TEWA (I)	Air Ops Branch Director	BRUCE WICKS
Operations Chief (OSC2)	DAVE GESSER (I); KEVIN THISSELL(I)	Safety Officer	GENE MADDEN; CARLOS NOSIE JR(I); DUANE CHAPMAN(I)

6. Resources Assigned this Period

Strike Team/Task Force/ Resource Designator	Leader	Num of Pers.	Trans. Y/N	Drop Off PT./Time	Pick Up PT./Time
HC2 ZUNI AGENCY #1 C-11 8/23	JIM CELLICION	20	N	ICP 0600	ICP 2000
HC2IA CREW 401 C-17 8/27	JARED G LEMCKE	19	N	ICP 0600	ICP 2000
EXCA J & D LOGGING E-91 8/22	MIKE BASS	2	N	ICP 0600	ICP 2000
EXCA WINEGAR E-127 8/24	TYE ROOKSTOOL	1	N	ICP 0600	ICP 2000
CHIP C & R REFOR. E-134 8/25	IAN RIGTERINK	2	N	ICP 0600	ICP 2000
CHIP BEAR MTN E-135 8/25	PETER OLIVERO	2	N	ICP 0600	ICP 2000
CHIP BEAR MTN E-145 8/29	EDDIE HEPNER	3	N	ICP 0600	ICP 2000
HEQB O-114 8/29	✈️ BRIAN POPE	1	N	ICP 0600	ICP 2000
SOF2 O-54 8/22	✈️ STUART HERKENHOFF	1	N	ICP 0600	ICP 2000
EMTF O-32 8/24	✈️ BRANDON VOGEL	1	N	ICP 0600	ICP 2000
EMTF O-78 8/24	✈️ MICHAEL BOYLE	1	N	ICP 0600	ICP 2000
EMTP O-80 8/22	RODNEY STUBBS	1	N	ICP 0600	ICP 2000
AMBU CASCADE E-89 8/24	ASHLEY COEY	2	N	ICP 0600	ICP 2000

7. Control Operations

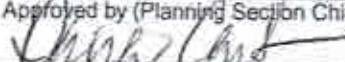
Utilize available resources to conduct chipping operations from DP-1 to DP-2.

8. Special Instructions

Medevac site - H-1: (DEGREES, DECIMAL MINUTES) = LAT 44° 24.53' N LONG 118° 32.51' W
Maintain 450' min. distance from heavy equipment operation.

9. Division/Group Communications Summary

Function	Frequency - RX	Frequency - TX	Tone	System	Channel	System	Channel
Command							
Tactical Div/Group	168.0500	168.0500	136.5	King	1		
Logistics							
Air to Ground	165.9875	165.9875		King	15		

Prepared by (Resource Unit Leader) Kurt Wetzstein	Approved by (Planning Section Chief) 	Date Prepared 08/19/14	Time Prepared 2100
--	---	---------------------------	-----------------------

Division Assignment List

1. Branch
BRANCH V (Aaron Hulburd)

2. Division/Group
T/V

3. Incident Name
BALD SISTERS

4. Operational Period
08/20/14 Wednesday DAY Shift 0600 - 2000

5. Operations Personnel

Operations Chief	JOHN TRUETT	Division/Group Supervisor	KEN WATKINS; DANA BAGNOLI(t)
Operations Chief (OSC1)	DARRELL WILLIS (t); JASON CLAWSON (t); DUANE TEWA(T)	Air Ops Branch Director	BRUCE WICKS
Operations Chief (OSC2)	DAVE GESSER (t); KEVIN THISSELL(t)	Safety Officer	GENE MADDEN; CARLOS NOSIE JR(t); DUANE CHAPMAN(t)

6. Resources Assigned this Period

Strike Team/Task Force/ Resource Designator	Leader	Num of Pers.	Trans. Y/N	Drop Off PT./Time	Pick Up PT./Time
DO22 1-A CONSTRUCT E-125 8/26	HARRY MOFFITT	1	N	ICP 0600	ICP 2000
DO22 J & D LOGGING E-53 8/27	JOE MITCHEK	2	N	ICP 0600	ICP 2000
SKG3 CLEARWATER E-15 8/20	ED URICK	1	N	ICP 0600	ICP 2000
SKD2 J & D LOGGING E-100 8/24	DON BINSHUS	2	N	ICP 0600	ICP 2000
HEQB O-79 8/21 ✈	ED VUOLO	1	N	ICP 0600	ICP 2000
SOF2 O-84 8/22 ✈	LEE FREEMAN	1	N	ICP 0600	ICP 2000
EMTP O-103 8/21	KYLE ROCK	1	N	ICP 0600	ICP 2000

7. Control Operations

Continue mechanized line construction from DP-12 to DP-20, approximately 1/4 of a mile. Ensure the timely Demob of identified resources.

8. Special Instructions

Medevac site - North: (DEGREES, DECIMAL MINUTES) = LAT 44° 27.26' N LONG 118° 25.10' W
 Medevac site - H-3: (DEGREES, DECIMAL MINUTES) = LAT 44° 23.902' N LONG 118° 25.937' W
 Maintain 450' min. distance from heavy equipment operation.

9. Division/Group Communications Summary

Function	Frequency - RX	Frequency - TX	Tone	System	Channel	System	Channel
Command							
Tactical Div/Group	168.6000	168.6000	136.5	King	3		
Logistics							
Air to Ground	165.9875	165.9875		King	15		

Prepared by (Resource Unit Leader)
Kurt Wetzstein

Approved by (Planning Section Chief)
[Signature]

Date Prepared
08/19/14

Time Prepared
2100

3. Incident Name **BALD SISTERS** 4. Operational Period **08/20/14 Wednesday DAY Shift 0600 - 2000**

5. Operations Personnel
 Operations Chief **JOHN TRUETT** Division/Group Supervisor **TOBY COOK**
 Operations Chief (OSC1) **DARRELL WILLIS (I); JASON CLAWSON (I); DUANE TEWA (I)** Air Ops Branch Director **BRUCE WICKS**
 Operations Chief (OSC2) **DAVE GESSER (I); KEVIN THISSELL(I)** Safety Officer **GENE MADDEN; CARLOS NOSIE JR(I); DUANE CHAPMAN(I)**

6. Resources Assigned this Period

Strike Team/Task Force/ Resource Designator	Leader	Num of Pers.	Trans. Y/N	Drop Off PT./Time	Pick Up PT./Time
HC1 FORT APACHE C-18 8/22	BRIAN QUINTERO	23	N	ICP 0600	ICP 2000
CHIP FCO INC T3 E-142 8/29	TREVOR GOULD	2	N	ICP 0600	ICP 2000
CHIP FCO INC T1 E-144 8/28	MIKE CLENDONEN	1	N	ICP 0600	ICP 2000
TFLD O-11 8/26	✈ DARWIN BULT	1	N	ICP 0600	ICP 2000
FOBS O-71 8/23	✈ MICHAEL WACHHOLZ	1	N	ICP 0600	ICP 2000
SOF2 O-55 8/23	✈ RANDY MILLER	1	N	ICP 0600	ICP 2000
EMTP O-81 8/22	✈ BRADLEY NELSON	1	N	ICP 0600	ICP 2000

7. Control Operations
 Continue chipping operations along the 13 road.
 Release excess resources to Division A as appropriate.

8. Special Instructions
 Medevac site - Gravel Pit: (DEGREES, DECIMAL MINUTES) = LAT 44° 21.066' N LONG 118° 26.107' W
 Medevac site - H-3: (DEGREES, DECIMAL MINUTES) = LAT 44° 23.902' N LONG 118° 25.937' W
 Maintain 450' min. distance from heavy equipment operation.

9. Division/Group Communications Summary

Function	Frequency - RX	Frequency - TX	Tone	System	Channel	System	Channel
Command							
Tactical	168.2000	168.2000	136.5	King	2		
Logistics							
Air to Ground	165.9875	165.9875		King	15		

Prepared by (Resource Unit Leader) **Kurt Wetzstein** Approved by (Planning Section Chief) *[Signature]* Date Prepared **08/19/14** Time Prepared **2100**

10. TASK/ MISSION/ ASSIGNMENT (Type/ function includes: Air Tactical, Retardant, Recon, Personnel Transport, Bucket Operations, SAR, etc.				
TYPE/FUNCTION	NAME OF PERSONNEL OR CARGO (if applicable) or instructions for tactical aircraft	MISSION START	FLY FROM	FLY TO
Air Attack	Maintain coverage as directed by Operations	0800	John Day Airport	Fire
Bucket Support	Bucket support as requested by Ops., Branch, Division or Air Attack	0800	John Day Airport	Fire
PAX/Cargo	Type II or III Helicopter as requested.	0800	John Day Airport	Fire
MEDIVAC	Request through ICP Communications & MEDL on Command Repeater. Give location; lat/long if known. Check Medical plan/IAP	As requested	John Day Airport	As directed
Recon/ Mapping	Type III Helicopter as requested	As requested	John Day Airport	Fire
Fixed-wing aerial retardant & Lead plane	Request through Air Attack via initial Air/Ground. Give location and ground contact name.	As requested	Various Tanker Bases	Fire
Aerial Ignition				
Initial Attack within TFR	Aircraft to be available for I.A. within TFR. Initial attack missions within TFR are requested through Ops or Air Ops and should be coordinated through Air Attack. Notify JDIDC. Notify ODF if in their protection area.	As requested	John Day Airport	As directed
Initial Attack Assistance	Will be requested thru John Day Dispatch	As requested	John Day Airport	As directed
NOTES:	<p>Flight Follow: "John Day Dispatch" Dixie Firenet: 167.5000 tx/rx, tx tone 123.0 Fall Mt. Firenet: 167.5000 tx/rx, tx tone 136.5 DECK: "Airbase" 163.1000 tx/rx, no tone</p> <p>Airtanker Ramp: "Ramp" 123.975</p> <p>Unicom: "Grant County" 122.800, AWOS 118.375</p>			
	<u>No retardant closer than 300 ft. from any visible water.</u>			
	<u>A-25 – Air to Air AM, A-26 – Air to Ground FM, A-61 TFR, A-68 – AA Platform & ATGS will be released at end-of-shift today.</u>			

Incident: Bald Sisters

Date: August 20, 2014

Shift: Day
0600-2000



SAFETY IS OUR FIRST PRIORITY

Fire fighter safety comes first on every fire, every time



LCES

INCIDENT RESPONSE POCKET GUIDE

WORK-REST GUIDELINES

SAFETY THOUGHT

While wildland firefighters do not expect to be entrapped on fire assignments, the probability always exists.



.....REMEMBER.....

Lookout, Communication, Escape Route, Safety Zone

Situation Awareness



MAJOR HAZARDS AND RISKS

- Snags
- Steep slopes
- Rolling material
- Chipping Operation

- Extreme fire behavior
- Dehydration
- Driving

- Bees / Ticks
- Complacency
- Communications
- Crew fatigue

Driving Hazards – Drive defensively. When in doubt, yield the right of way of other vehicles. Watch out for wildlife and cattle in the vicinity of the fire. Remember to have lights on and wear a seatbelt.

Personal Health – Wash hands at all opportunities especially before eating. Drink plenty of fluids, water is best. See Medical Unit at first sign of an illness and all injuries.

COMMON DENOMINATORS OF FIRE BEHAVIOR ON TRAGEDY FIRES

- Most incidents happen on the smaller fires or on isolated portions of larger fires.
- Most fires are innocent in appearance before the “flare-ups” or “blow-ups”. In some cases, tragedies occur in the mop-up stage.
- Flare-ups generally occur in deceptively light fuels.
- Fires run uphill surprisingly fast in chimneys, gullies, chutes and on steep slopes.
- When there is an unexpected shift in wind direction or in wind speed.

Safety Officers

Gene Madden, SOF1(T)

Carlos Nosie, SOF1(T)

Duane Chapman, SOF2(T)

Incident Action Plan Safety Analysis		Operational Period: August 20, 2014 - Day 0600-2000		Incident: Bald Sisters Fire				
Identification of Hazards and Risk Assessment		Assignment: Wildfire - Suppression		Mission Objective(s): Safety of Incident Responders and Public. Provide an analysis of risks and mitigations to all fire personnel				
Pre-mitigation		Mitigation(s), Warning and Remedies		Post-mitigation				
Hazards	Likelihood	Severity	Risk Level	Likelihood	Severity	Risk Level	Acceptable? Yes/No	
Snags	4	4	8-Red	X	X	3	6-Yellow	Yes
Chainsaw Operations	4	3	7-Yellow	X	X	3	6-Yellow	Yes
Extreme Fire Behavior	4	3	7-Yellow	X	X	3	6-Yellow	Yes
Weather Conditions	4	3	7-Yellow	X	X	2	5-Green	Yes
Indirect Fireline	4	3	7-Yellow	X	X	3	6-Yellow	Yes
Aviation Use	3	3	6 Yellow	X	X	2	5-Green	Yes
Bucket Drops	5	3	8-Red	X	X	4	7-Yellow	Yes
Steep Terrain (Greater than 40%)	5	3	8-Red	X	X	4	7-Yellow	Yes
Rolling and Falling Materials	4	4	8-Red	X	X	3	7-Yellow	Yes
Specialized Equipment – UTV, ATV fork lift, chipper	4	4	8-Red	X	X	3	7-Yellow	Yes

Heavy Equipment Operations	5	4	9-Red	X	X	X	X	X	3	4	7-Yellow	Yes
Travel/Vehicle	4	4	8-Red	X	X	X	X	X	4	3	7-Yellow	Yes
Medical Emergency	4	3	7-Yellow	X	X	X	X	X	3	3	6-Yellow	Yes
Illness/Injury Line and Camp	3	4	7-Yellow	X	X	X	X	X	3	3	6-Yellow	Yes
Dehydration	4	3	7-Yellow	X	X	X	X	X	3	3	6-Yellow	Yes
Travel/Foot	4	3	7-Yellow	X	X	X	X	X	3	3	6-Yellow	Yes
Ticks	3	3	6-Yellow	X	X	X	X	X	2	3	5-Green	Yes
Bees	3	3	6-Yellow	X	X	X	X	X	2	3	5-Green	Yes
Operations Section Chiefs	John Truett, Darrell Willis, Jason Clawson, Duane Tewa, Johnathan Teutrine (t), Aaron Hulburd (t), Dave Gesser (t), Kevin Thissell (t)			Date / Time:	August 19, 2014; 1700		Safety Officers	Gene Madden, Carlos Nostle Jr. Duane Chapman(t)		Date / Time:	August 19, 2014 1800	

ICS 215R

Risk Level
 8+ Red-Unacceptable
 6-7 Yellow-Acceptable, w "M"
 2-5 Green-Acceptable
 M = Mitigation

Likelihood/Probability
 5 Frequent- Occur Many Times
 4 Occasional- Occur Sometimes
 3 Remote- Unlikely, But Possible to Occur
 2 Improbable- Very Unlikely to Occur
 1 Extremely Improbable- Almost inconceivable

Severity/Consequences
 5 Catastrophic- Equipment destruction/multiple Fatalities
 4 Hazardous- Serious Injury, Major Equip Damage
 3 Major- Serious Injury, Serious Accident
 2 Minor- Nuisance, Use of Emergency procedures
 1 Negligible- Little Consequence

MEDICAL PLAN (ICS 206 WF)

1. Incident/Project Name	2. Operational Period
Bald Sisters Fire	Date/Time: 08/20/2014 0600-2000 (Avail 24/7)

3. Incident Medical Stations			
Medical Aid Station	Location	Level of Care	
		ALS	BLS
John Day Medical Unit	John Day ICP (Incident Command Post) 541-820-3592	Y	Y

4. Ambulance Services				
Name	Complete Address	Phone	Level of Care	
			ALS	BLS
Blue Mountain Hospital	170 Ford Road, John Day OR 97845	541-575-1311 ER Ext 2208	Y	Y
Cascade Medical Transport	Incident Ambulance (Medic 2)	541-410-0493 541-639-7657	Y	Y

5. Air Ambulance Services		
Name	Phone	Type of Aircraft & Capability
Air Link-Bend OR	866-650-7262	MedEvac
Life Flight-Boise ID	800-521-2444	MedEvac
John Day Heli-Rappelers	541-575-3384	Helicopter
Grand Canyon	541-575-3384	Short Haul

6. Hospitals								
Name Complete Address	GPS Datum – WGS 84 Coordinate Standard Degrees Decimal Minutes DD° MM.MMM' N - Lat DD°MM.MMM' W - Long		Travel Time		Phone	Helipad		Level Of Care Facility
	Lat:	Long:	Air	Gnd		Yes	No	
Blue Mountain Hospital 170 Ford Road, John Day OR 97845	44° 25.03 N	118° 57.55 W	0.5	1	541-575-1311 ER Ext 2208	Y		Level 4 Trauma
	VHF:							
St. Charles Medical Center 2500 NE Neff Rd, Bend, OR. 97701	44° 05.67 N	121° 1.10 W	1	4	541-382-4321	Y		Level 2 Trauma
	VHF:							
St Alphonsus Medical Center 3325 Pocahontas Rd. Baker City, OR.	43° 36.50 N	116° 15.22 W	1	4	541-523-6461	Y		Level 3 Trauma
	VHF:							
Legacy Emmanuel 2801 N. Gantenbein Ave. Portland, OR. 97227	45° 32.58 N	122° 42.26 W	2	6	503-413-2200	Y		Level 1 Trauma/Burn Center
	VHF:							

CONTINUED NEXT PAGE

MEDICAL PLAN (ICS 206 WF)

7. Division / Branch / Group	Area Location Capability		
Division Alpha	EMS Responders & Capability:	<u>Rodney Stubbs Paramedic / Brandon Vogel EMT</u> <u>Mike Boyle EMT / Cascade Ambulance</u>	
	Equipment Available on Scene:	ALS KIT / BLS KIT x2	
	Medical Emergency Channel:	Command	
	ETA for Ambulance to Scene:	15 Minutes	
	Air:	1 hour	
	Ground:		
	Approved Helispot:	H-01 Medevac	
	Lat:	44° 24.53' N	
	Long:	118° 32.51' W	
Division Echo	EMS Responders & Capability:		
	Equipment Available on Scene:		
	Medical Emergency Channel:		
	ETA for Ambulance to Scene:		
	Air:	1 Hour	
	Ground:	15 minutes	
	Approved Helispot:	Reynolds Medivac	
	Lat:	44° 25.033' N	
	Long:	118° 32.653' W	
Division Tango Victor	EMS Responders & Capability:	<u>Brandon Vogel EMT / Kyle Rock Paramedic /</u> <u>Rodney Stubbs Paramedic</u>	
	Equipment Available on Scene:	BLS KIT / ALS KIT	
	Medical Emergency Channel:	Command	
	ETA for Ambulance to Scene:	1 hour	
	Air:	1 hour	
	Ground:		
	Approved Helispot:	NORTH	H-03 Medevac
	Lat:	44° 27.39' N	44° 23.902' N
	Long:	118° 25.14' W	118° 25.937' W
Division Zulu	EMS Responders & Capability:	<u>Brad Nelson Paramedic / Patrick Ojeda Paramedic</u>	
	Equipment Available on Scene:	ALS KIT x2	
	Medical Emergency Channel:	Command	
	ETA for Ambulance to Scene:	15 Minutes	
	Air:	1 hour	
	Ground:		
	Approved Helispot:	GRAVEL PIT	H-03 Medevac
	Lat:	44° 21.066' N	44° 23.902' N
	Long:	118° 26.107' W	118° 25.937' W
8. Prepared By (Medical Unit Leader)	9. Date/Time	10. Reviewed By (Safety Officer)	11. Date/Time
Jeff Hatch MEDL/Steve Cannon MEDL(t) <i>Jeff Hatch</i> 0-40.26	8/19/2014 1830	Gene Madden SOF1/ Carlos Nosie SOF2/ Duane Chapman SOF2(t) <i>[Signature]</i>	8/19/2014 1830

Medical Incident Report / 9-Line Guidelines

Date: _____ Time: _____ Division: _____

<u>Line</u>	<u>Information</u>	<u>Notes:</u>								
1.	<p><u>Level of Severity:</u></p> <p><input type="checkbox"/> RED – (Airway obstruction, Difficulty breathing, Major blood loss Cardiac chest pain, Crush injury to the chest, Penetrated object, Open fracture, 2^o or 3^o burn more than 4 palm sizes)</p> <p><input type="checkbox"/> YELLOW – (Closed fracture, Significant trauma; Lacerations and bleeding not controlled by direct pressure, Not able to walk, 2^o or 3^o burn, no more than 1 or 2 palm size)</p> <p><input type="checkbox"/> GREEN – (Small area abrasions or lacerations, bleeding controlled by pressure, Minor sprain, General sickness)</p>	<p style="text-align: center;"><u>Triage Page 106 IRPG 2014</u></p> <p>Code 3 ALS Ambulance or Medivac Helicopter, Medical radio traffic has priority Emergency radio traffic restricted to: On site Medic, Div. Sup., or on scene IC.</p> <p>Ambulance or consider air transport if at remote location, Medical radio traffic may have priority as above.</p> <p>MEDICAL TRANSPORT via crew, ground support, field medic, or air if at remote location. Fire radio traffic unchanged.</p>								
2.	<p><u>Patient Assessment / Injuries & Treatment:</u></p> <p>Patient #1 - _____ _____ _____</p> <p>Patient #2 - _____ _____ _____</p>	<p style="text-align: center;"><u>Assessment Page 100 IRPG 2014</u> <u>Treatment Page 100-105</u></p> <ul style="list-style-type: none"> • Level of Consciousness • Breathing Rate • Pulse Rate • Skin Condition – Pink or Pale, Warm or Cold <p style="text-align: center;"><u>Injury:</u></p> <table style="margin-left: auto; margin-right: auto;"> <tr> <td>Bleeding</td> <td>Heat</td> </tr> <tr> <td>Fracture</td> <td>Burns</td> </tr> <tr> <td>Head Injury</td> <td>Bee Sting</td> </tr> <tr> <td></td> <td>Eye</td> </tr> </table>	Bleeding	Heat	Fracture	Burns	Head Injury	Bee Sting		Eye
Bleeding	Heat									
Fracture	Burns									
Head Injury	Bee Sting									
	Eye									
3.	<p><u>Patient Location:</u></p> <p>Lat: _____ Long: _____</p>	<p>Drop Point, Staging area, Division, Spike Camp, Line area or GPS</p>								
4.	<p><u>Additional Equipment or Medic Needed:</u></p>	<p>Hoist, SKED, Backboard, Litter, Rope, Paramedic, Trauma Bag, O₂, AED</p>								
5.	<p><u>On Scene Medic and IC:</u></p>	<p>Crew medic, Field medic Who is the IC for this incident?</p>								
6.	<p><u>Operational Channel:</u> Command _____ Tactical _____ EMS Helicopter contact Air Guard - RX 168.625 TX 168.625 TX Tone 110.9</p>	<p>What frequency or channel will the incident be run on?</p>								
7.	<p><u>LZ Location / GPS</u></p> <p>Lat: _____ Long: _____</p> <p>Ground Contact: _____</p>	<p style="text-align: center;"><u>LZ Area Selection Page 49-51 IRPG 2014</u></p> <p>Set GPS on WGS-84 Use Degrees, Minutes and Tenths of Minutes (Lat 00^o 00.00' - Long 000^o 00.00')</p>								
8.	<p><u>LZ Special Hazards:</u></p>	<p>Trees, power lines, wind direction, slope</p>								
9.	<p><u>Contingency Plan:</u></p>	<p style="text-align: center;">Be Thinking Ahead</p>								

OPERATIONAL INCIDENT EMERGENCY PLAN (IEP)

In the event of an accident, the nearest Division Group Supervisor will initially oversee the emergency and activation of the (IEP). Radio communication will be on the command frequency or as designated by the Division Group Supervisor, this channel will be cleared of all radio traffic by communications emergency announcement. Names of injured or deceased individuals will not be given over the radio. Use of crew names or designators should be limited. Deceased individuals and their equipment should not be moved, except to accomplish rescue work or to protect the health and safety of others. Operations Section Chief will notify and update the Incident Commander.

DIVISION/GROUP SUPERVISOR RESPONSIBILITIES

The Division group supervisor assumes immediate command of the emergency incident.

1. On the command channel requests the closest line medic or crew EMT to respond to the accident site.
2. Conveys size up and needs assessment to the Incident Communications Center and MEDL:
 - Nature of the incident (auto/aircraft accident, burnover, etc) and number of injured, vehicles or aircraft involved.
 - Location (Lat./Long) of the site. (Lat./Long. per incident requirements)
 - Medical treatment needed and transportation needs.
 - Special needs, i.e. law enforcement, heavy rescue, and Haz Mat response.
 - In incident is LIFE THREATENING, Clear Command frequency for emergency traffic only.
 - Ensures OSC has been informed of the situation.
 - OSC will inform IC.
3. Coordinates with the MEDL what type of transport is needed based on available information from responders on site. MEDL will coordinate ground transport with the ground ambulance or ground support depending on type of injury. Air Transport will be coordinated by AOBD and ATGS based on dialogue with MEDL.
4. Remove all unnecessary personnel from the emergency site.

ADDITIONAL GUIDELINES FOR MULTI CASUALTY INCIDENTS

The following are sectors or tasks that could be assigned in the multi casualty incident. These can be assigned to personnel who are trained in these specific areas who are on scene or other emergency agency personnel as they arrive on scene.

TRIAGE SECTOR

Assesses and determines priorities of patients to be transported.

TREATMENT SECTOR

Treats patients and prepares them for transport based on their priority.

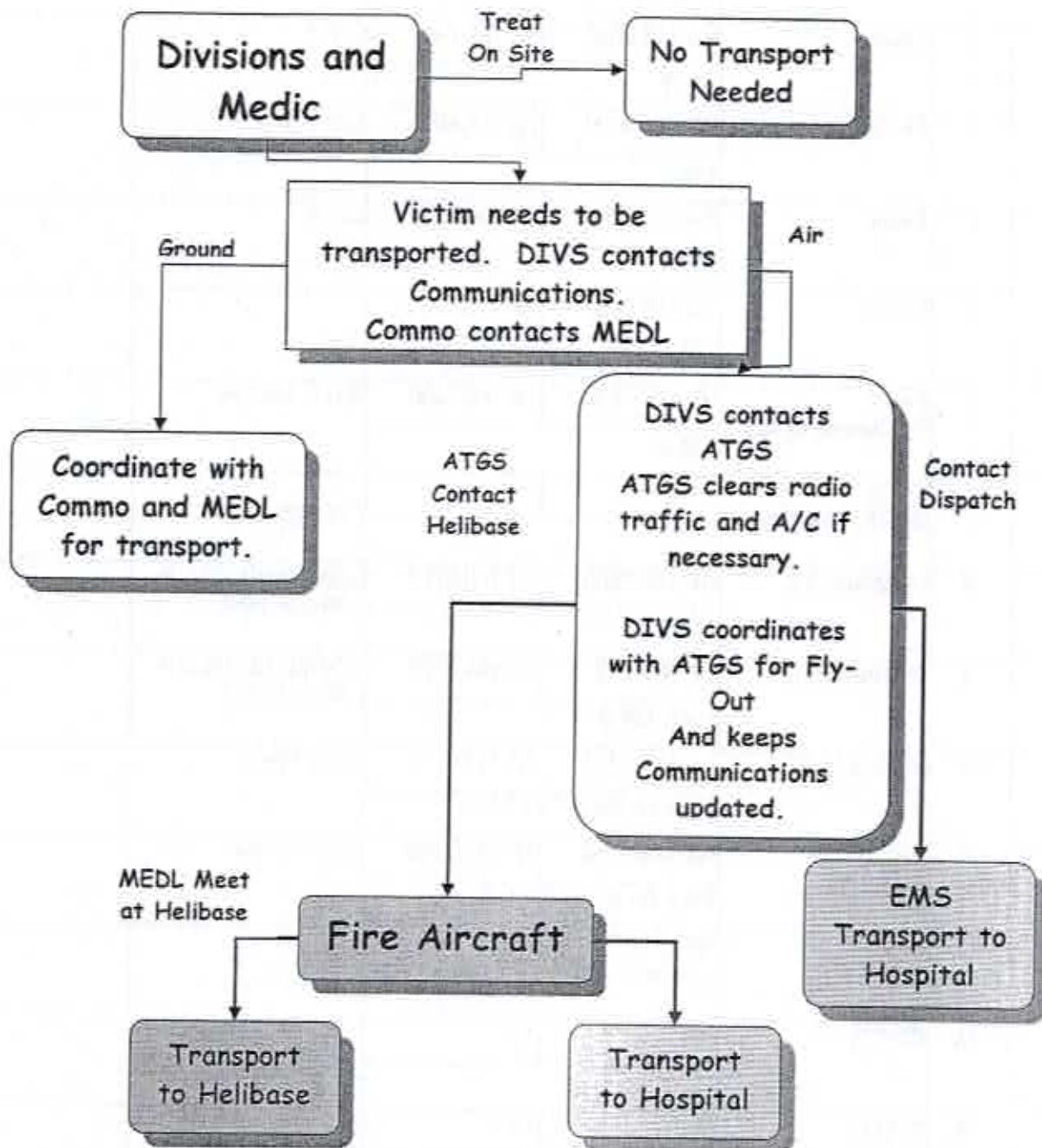
TRANSPORTATION SECTOR

Coordinates all patient transportation to medical facilities, air and ground.

AIR TACTICAL SECTOR

Coordinates with the AOBD, the air medical response.
Works with transportation sector on frequencies and coordinates.

MEDIVAC EMERGENCY FLOWCHART



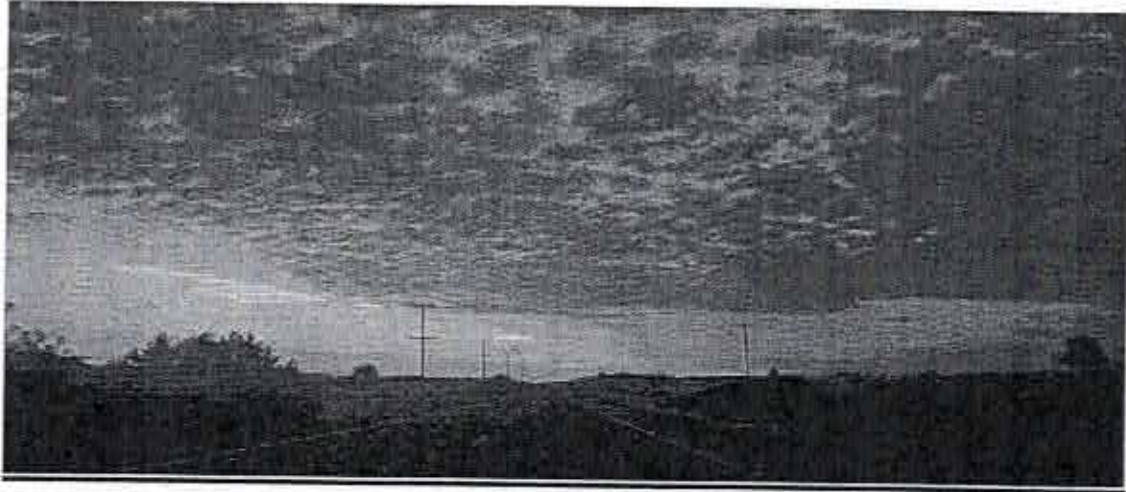
3. Basic Radio Channel Utilization

Radio Type	Channel	Function	Frequency/Tone		Assignment	Remarks
King	1	TAC 1	RX 168.0500 136.5	TX 168.0500	DIV A	
King	2	TAC2	RX 168.2000 136.5	TX 168.2000	DIV Z	
King	3	TAC3	RX 168.6000 136.5	TX 168.6000	DIV T & V	
King	4	TAC4	RX 166.7250 136.5	TX 166.7250	DIV E	
King	5	TAC5	RX 166.7750 136.5	TX 166.7750		
King	6	TAC6 To Command Net	RX 168.2500 136.5	TX 168.2500	ICP to the Fire	
King	7	TAC7 DO NOT USE!!!			DO NOT USE!!!	
King	8	COMMAND 8	RX 168.7000 136.5	TX 170.9750	COMMAND TO ICP LINKED TO 9	
King	9	COMMAND 9	RX 169.5375 Tone 136.5	TX 164.7125	COMMAND TO ICP LINKED TO 8	
King	10	DIXIE EAST	RX 171.5750 Tone Rx167.9 Tx 123.0	TX 173.0250	Local Forest	
King	11	SHEEP MT	RX 171.5750 Tone Rx 167.9 Tx 146.2	TX 173.0250	Local Forest	
King	12	EMPTY	RX	TX		
King	13	EMPTY	RX	TX		
King	14	EMPTY	RX	TX		
King	15	AIR TO GRND	RX 165.9875 110.9	TX 165.9875	Primary ATG	
King	16	AIR GUARD	RX 168.6250 110.9	TX 168.6250	AIR GUARD EMERGENCY ONLY	

4. Prepared by (Communications Unit)
Stephen Strate COMB

5. Date Prepared 08/19/14
6. Time Prepared 0809

BALD SISTERS PHONE LIST



541-820-3392-----IC
541-820-3592-----MEDICAL/SAFETY
541-820-3613-----ORDERING
720-237-3577-----SECURITY
541-820-4916-----PLANS
720-454-2066-----GROUND SUPPORT
541-820-4912-----FINANCE PHONE
541-820-4913-----FINANCE FAX
541-820-4914-----DEMOB PHONE
541-820-4915-----DEMOB FAX
541-820-4916-----RESOURCE
541-820-4917-----SUPPLY
541-820-4918-----COMMUNICATIONS
541-820-4919-----INFORMATION
541-820-4911-----OPERATIONS

TENTATIVE RELEASE 8-20-2014

OVERHEAD

O-40.8	0600	(ASGS)	DREILING, PETE
O-40.25	0600	(COST)	SANDERS, DONNA
O-75	0600	(FOBS)	EGGLESTON, SHAWN
O-1	0700	(HEQB)	SHERRETZ, KEVIN
O-29	0700	(TFLD)	BLISS, SCOTT
O-22	0730	(DIVS)	MRUZIK, LEANNE
O-28	0800	(HEQB)	CASTO, DANIEL
O-40.30	0930	(SOF2)	NOSIE JR, CARLOS
O-82	1030	(EMTP)	OJEDA, MEDIC KIT
O-3	1100	(HEQB)	KLAMUT, COREY
O-18	1600	(HEQB)	SCHLAEFER, MATTHEW
O-5	1800	(HEQB)	MCCALLIE, JAMES
O-67	2000	(RADO)	HOUPT, CHARITY ANN
O-110	2000	(RADO)	REYES, JESSYKA JOY

CREWS

C-20	0700	(HC2)	HC2 RAMAH #1
C-21	0730	(HC2)	HC2 ZUNI #2
C-22	0800	(HC2)	HC2 LAS VEGAS #1
C-23	0900	(HC2)	HC2 MORA #1
C-24	0930	(HC2)	HC2 FT APACHE #04

EQUIPMENT

E-146	0700	(BUS)	BUS - CREW CARRIER - 015 - PEL
E-147	0700	(BUS)	BUS - CREW CARRIER - 013 - PEL
E-148	0700	(BUS)	BUS - CREW CARRIER - 010 - PEL
E-149	0700	(BUS)	BUS - CREW CARRIER - 018 - WE-
E-150	0700	(BUS)	BUS - CREW CARRIER - CALDWELL
E-67	0930	(SLSH)	MAST BEAR MTN
E-5	1500	(SLSH)	MAST STATEWIDE 010
E-6	1500	(SLSH)	MAST STATEWIDE 011
E-88	2000	(WTS2)	K & M CONTRACTING
E-100	2000	(SKD2)	J & D LOGGING

OVERHEAD

TENTATIVE RELEASE 8-21-14

O-32	0600	(EMTF)	VOGEL, BRANDON
O-54	0600	(SOF2)	HERKENHOFF, STUART
O-61	0600	(SEC1)	LAPLANT, RALPH WILLIAM
O-63	0600	(SEC2)	WISE, JOHN J
O-80	0600	(EMTP)	STUBBS, ALS KIT
O-109	0600	(RESL)	WETZSTEIN, KURT
O-40.42	0700	(SCKN)	PERZ, ROBERT J
O-58	0700	(SEC1)	EDISON, ASHLEY N
O-71	0700	(FOBS)	WACHHOLZ, MICHAEL
O-84	0700	(SOF2)	FREEMAN, LEE LESLIE
O-103	0700	(EMTP)	ROCK, KYLE
O-106	0700	(MEDL)	MADRON, LINDA
O-14	0800	(SEC2)	SARGENT, KEITH M
O-116	0800	(EQPI)	CAYWOOD, NICHOLAS D
O-7.12	0900	(AOBD)	WICKS, BRUCE
O-51	1200	(EQPM)	ERICKSON, MARGO
O-52	1200	(EQPM)	JOHNSON, ALYSA MARILYN
O-60	1200	(SEC1)	MORSE, ANDREW A
O-87	1200	(COML)	STRATE, STEPHEN
O-117	1200	(SEC2)	WATSON, DANIEL
O-115	1400	(SEC2)	DEBAERE, TRENT JOSEPH
O-59	1600	(SEC1)	JONES, SHAWN
O-79	1800	(HEQB)	VUOLO, EDWARD

EQUIPMENT 8-21-14

E-38	1000	(POT3)	KINGS THRONE POT3
E-86	1000	(SUP)	TWO FEATHERS LLC
E-73	1200	(PU)	TRANSPORTATION PICKUP -
E-75	1200	(PU)	PICKUP



Human Resource Message



You Make the Difference

Your responsibility to treat people with dignity and respect

PLUS

Your right to receive the same treatment

EQUALS

MUTUAL RESPECT

Yesterday's Riddle -- Take away my first letter, and I still sound the same. Take away my last letter, I still sound the same. Even take away my letter in the middle; I will still sound the same. I am a five letter word. What am I? **ANSWER: EMPTY**

Today's Riddle -- A man was driving his truck. His lights were not on. The moon was not out. Up ahead, a woman was crossing the street. How did he see her?

Ana G Parada, HRSP

Division Supply Order

Order Number:		
Date:	Time Order Was Placed:	
Division:	Contact Method:	Date and Time Needed:
Contact for Delivery:	LAT:	
Mode of Delivery (Driver/Helo/DIVS to pick up):	LONG:	
Elevation (if sling load):	LZ/DP	

- 1 1000' hose lay (includes all attachments)
10 lg 1½" hose (100' per lg), 10 lg 1" hose (100' per lg) 10 ea 1½" gated wyes, 10 ea 1½" to 1" reducers, 10 ea 1" nozzles
- 2 2000' hose lay (includes all attachments)
20 lg 1½" hose (100' per lg), 20 lg 1" hose (100' per lg) 20 ea 1½" gated wyes, 20 ea 1½" to 1" reducers, 20 ea 1" nozzles
- 3 3000' hose lay (includes all attachments)
30 lg 1½" hose (100' per lg), 30 lg 1" hose (100' per lg) 30 ea 1½" gated wyes, 30 ea 1½" to 1" reducers, 30 ea 1" nozzles

ITEM	QTY	DELIVER TO	DATE NEEDED	TIME
4 ¾" hose (50') pencil/garden				
5 ¾" gated wye				
6 ¾" nozzle				
7 1" hose (100')				
8 1" gated wye				
9 1" inline tee (1"x1"x¾")				
10 1" inline tee (1"x1"x1")				
11 1" forester nozzle (R5)				
12 1" mystery nozzle (KK)				
13 1½" hose (100')				
14 1½" gated wye				
15 1½" nozzle				
16 1½" x 1" inline tee				
17 1½" to 1" reducer				
18 1" to ¾" reducer				
19 ¾" to 1" increaser				
20 1" to 1½" increaser				
21 Mark 3 pump kit				
22 Chainsaw kit				
23 structure wrap (54" x 300')				
24 foam (5 gallons)				
25 ribbon, flagging (specify)*				
26 shovel				
27 pulaski				
28 combi (shovel/hoe)				
29 water, cubies				
30 water, cases				
31 gatorade				
32 MREs				
33 saw gas (gallons/unmixed)				
34 bar oil (quarts/gallons)				
35 2 cycle oil (pints/gallons)				
36 drip torch				
37 drip torch mix (3:5, 1:5, gallons)				
38 fusees (ea, box, case)				
39 flare gun rounds (type)				
40 sprinkler kits				
41 backpack pump				
42 plastic sheeting (16' x 100' roll)				
43 pumpkin (size)				
44 porta-tank (gallons)				
45 AA batteries (24 per package)				
46 flares, stubby				
47 cartridge, 22 caliber, #6, purple (PFK)				
48 sprinkler trailer (Sunset/Prescott Fire)				
49 Non-potable bag, slingable water, 55 gallon				

*(chartreuse, dark pink, orange, red, white, yellow, killer tree, spot fire, escape route, hazards)

Resource Advisor Message

Bald Sisters Wildfire

8-20-2014

Road side Thinning/Clearings

- Low cut all stumps on any areas visible from designated roads.
- Chip all cuttings less than 8 inches.
- Deck all merchantable size timber off roads to allow for safe passage.
- Cuttings over 8 inches and less than 15 feet in length should be staged adjacent to roads while allowing for safe passage of fire personnel and the public.

Dozer Line

- A READ will work directly with the excavator as work is implemented on all dozer line rehab.
- Recontour and seed dozer lines. Pull all slash, debris and berms back onto the line. Install waterbars as per table below. Waterbars should route water into the green side to reduce erosion of burned slopes.
- Camouflage the entrance to the dozer line at the junction of the line and all roads and trails to prevent off-road access. Use slash and install an earthen berm.

Fire Line Slope	Maximum Spacing
1-6%	300 ft.
7-9%	200 ft.
10-14%	150 ft.
15-20%	90 ft.
21-40%	50 ft.
41-60+%	25 ft.

Safe zones, staging areas, turn around's

- As soon as the site is no longer needed, pull all berms and smooth areas for reseeding to occur this fall. All materials (logs, root wads, etc.) should be spread out across the site to discourage motorized use and help with control erosion.

Drop Points, and Road Junctions

- Remove all signs and flagging.
- Ensure that all trash (cardboard boxes, bags, misc. supplies) are removed from the road sides and trailheads.

FAIRGROUNDS ICP

