



# INC 107 Incident Decision

Published  
07/13/14 19:27

## Table of Contents

1. Decision .....	2
1.1. Decision Summary.....	2
1.2. Assessment .....	3
1.2.1. Incident Information .....	3
1.2.2. Weather.....	5
1.2.3. Values .....	7
1.3. Objectives .....	8
1.4. Course of Action .....	10
1.5. Validation.....	11
1.6. Rationale .....	13

# 1. Decision

## 1.1. Decision Summary

### Decision Information

NAME	VALUE
Published	07/13/2014 19:27 CDT
Estimated Cost	\$300,000
Incident Owner(s)	David Schultz
Editor(s)	Homer Faver, Emily Lent, Gavin Hoban, lauren miller, shaun larsen
Reviewer(s)	
Approver(s)	Homer Faver
Natl Preparedness Level	2

### Decision History

Editor Name	Action	Date (CDT)	Comment
Faver, Homer	Published	07/13/2014 19:27	
Faver, Homer	Approved	07/13/2014 19:27	
Schultz, David	Review Requested	07/13/2014 18:41	
Schultz, David	Review Requested	07/13/2014 18:40	
Schultz, David	Created	07/13/2014 18:13	

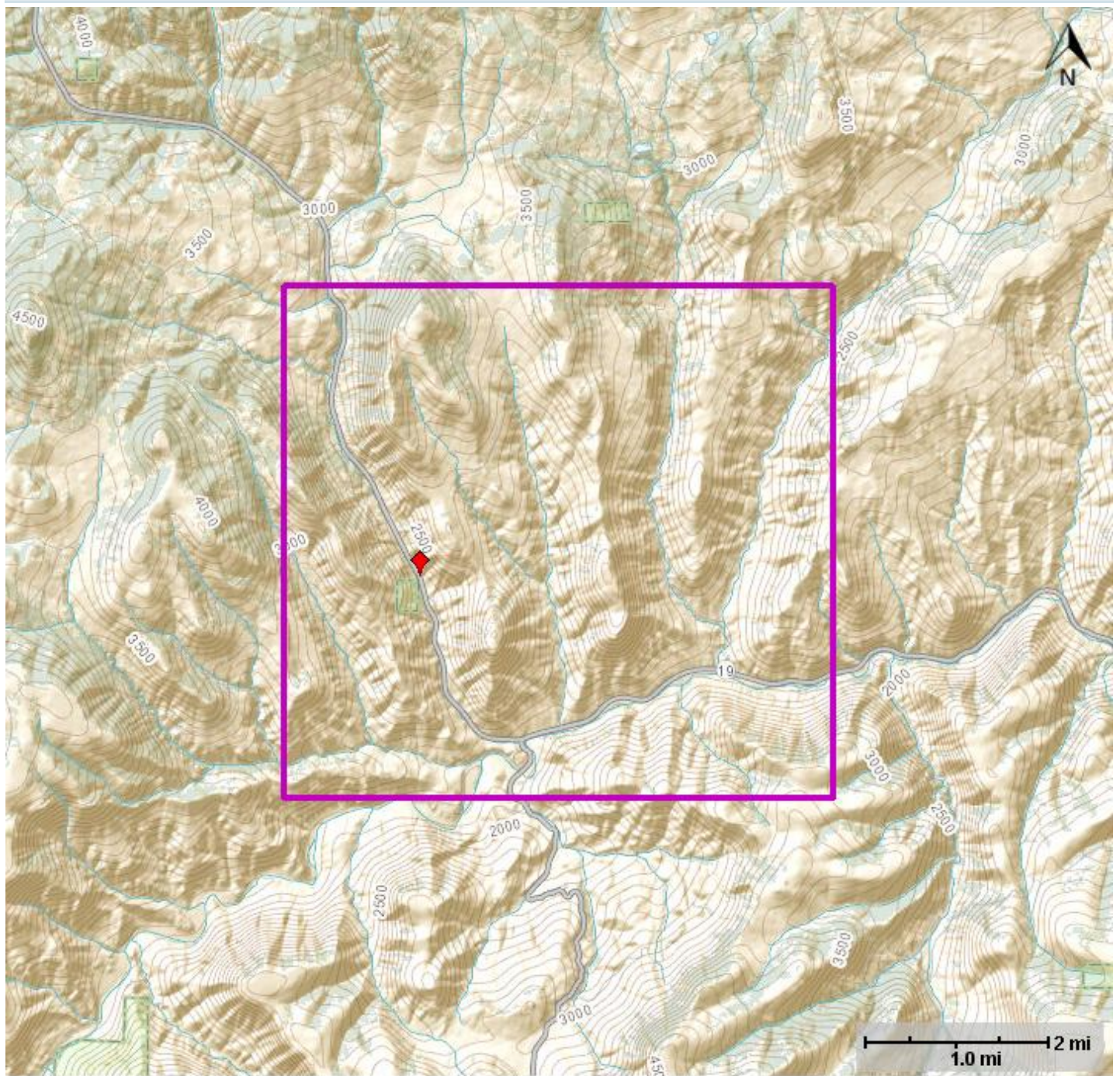
## 1.2. Assessment

### 1.2.1. Incident Information

#### Incident Information

NAME	VALUE
Incident Name	INC 107
Unique Fire Identifier	2014-OR952S-014107
Responsible Unit Name	John Day Unit
FireCode	H75P
P-Code	
Point of Origin	44.82333 N / 120.02556 W
Incident Size	0.1 acres
Latest Perimeter Size	0 acres
Incident Cause	Undetermined
Incident Type	Wildfire
Incident Discovery	07/12/2014 15:30
Contained	
Controlled	
Out	
Jurisdictional Unit	Not available
Jurisdictional Agency(s)	BLM, Other
Geographic Area	Northwest
Owner Name(s)	David Schultz

Incident Map



— Planning Areas    ◆ Point of Origin

## 1.2.2. Weather

### Fire Weather Zone Forecast

---

806  
FNUS56 KPDT 132200  
FWFPDT

FIRE WEATHER PLANNING FORECAST FOR NE OREGON AND SE WASHINGTON  
NATIONAL WEATHER SERVICE PENDLETON OR  
300 PM PDT SUN JUL 13 2014

...RED FLAG WARNINGS IN EFFECT FOR ABUNDANT LIGHTNING THROUGH  
MONDAY MORNING...

.DISCUSSION...HOT AND DRY CONDITIONS WILL CONTINUE THROUGH MID  
WEEK WITH POOR TO MODERATE RELATIVE HUMIDITY RECOVERIES  
OVERNIGHT...ESPECIALLY ON THE RIDGES. THUNDERSTORMS WILL CONTINUE  
TO DEVELOP AND MOVE FROM CENTRAL OREGON NORTH AND EAST THROUGH THE  
EVENING AND OVERNIGHT. RED FLAG WARNINGS HAVE BEEN ISSUED FOR  
MOST OF THE REGION DUE TO ABUNDANT LIGHTNING. THUNDERSTORMS ARE  
EXPECTED TO EXIT THE AREA FROM SOUTHWEST TO NORTHEAST OVERNIGHT  
AND MONDAY.

\*\*\*THUNDERSTORMS IMPLY STRONG GUSTY WINDS\*\*\*  
\*\*\*WINDS ARE 20 FOOT 10 MINUTE AVERAGES\*\*\*  
\*\*\*CWR-CHANCE OF WETTING RAIN 0.10 OR GREATER\*\*\*

HIGH ELEVATION HAINES INDEX OBSERVED SUNDAY MORNING JULY 13  
SALEM...3 MEDFORD...3 SPOKANE...2 BOISE...4

ORZ644-141115-  
CENTRAL BLUE MOUNTAINS-  
300 PM PDT SUN JUL 13 2014

...RED FLAG WARNING IN EFFECT UNTIL 5 AM PDT MONDAY...

.TONIGHT...  
\* SKY/WEATHER.....MOSTLY CLOUDY. SCATTERED SHOWERS AND  
THUNDERSTORMS IN THE EVENING...THEN ISOLATED SHOWERS AND  
THUNDERSTORMS AFTER MIDNIGHT.  
\* MIN TEMPERATURE.....59-64.  
\* MAX HUMIDITY.....54-69 PERCENT...EXCEPT 46-58 PERCENT  
RIDGES.  
\* HUMIDITY RECOVERY.....MODERATE.  
\* 20-FOOT WINDS.....  
\* VALLEYS/LWR SLOPES...NORTH WINDS 4 TO 9 MPH.  
\* RIDGES/UPR SLOPES...NORTHEAST WINDS 5 TO 11 MPH.  
\* CWR.....10 PERCENT.  
\* LAL.....3.  
\* HAINES INDEX.....4 (LOW).  
\* MIXING HEIGHT.....300 FT AGL.  
\* TRANSPORT WINDS.....NORTH UP TO 15 MPH.

.MONDAY...  
\* SKY/WEATHER.....PARTLY CLOUDY. A SLIGHT CHANCE OF  
SHOWERS AND THUNDERSTORMS.  
\* MAX TEMPERATURE.....88-95...EXCEPT 81-86 RIDGES.  
\* MIN HUMIDITY.....17-24 PERCENT.  
\* 20-FOOT WINDS.....  
\* VALLEYS/LWR SLOPES...NORTHWEST WINDS 2 TO 5 MPH SHIFTING TO THE  
NORTH 6 TO 12 MPH IN THE AFTERNOON.  
\* RIDGES/UPR SLOPES...NORTH WINDS 2 TO 7 MPH INCREASING TO 7 TO 13  
MPH IN THE AFTERNOON.  
\* CWR.....0 PERCENT.  
\* LAL.....2.  
\* HAINES INDEX.....3 (VERY LOW).  
\* MIXING HEIGHT.....11800 FT AGL.  
\* TRANSPORT WINDS.....NORTH 5 TO 10 MPH.

.MONDAY NIGHT...  
\* SKY/WEATHER.....MOSTLY CLEAR.  
\* MIN TEMPERATURE.....56-61.  
\* MAX HUMIDITY.....62-77 PERCENT.  
\* HUMIDITY RECOVERY.....GOOD.  
\* 20-FOOT WINDS.....  
\* VALLEYS/LWR SLOPES...NORTH WINDS 6 TO 11 MPH SHIFTING TO THE  
NORTHWEST 1 TO 5 MPH AFTER MIDNIGHT.  
\* RIDGES/UPR SLOPES...NORTHWEST WINDS 4 TO 10 MPH.  
\* CWR.....0 PERCENT.  
\* LAL.....1.  
\* HAINES INDEX.....3 (VERY LOW).  
\* MIXING HEIGHT.....300 FT AGL.  
\* TRANSPORT WINDS.....NORTHWEST 5 TO 15 MPH.

Fire Weather Zone Forecast

---

.TUESDAY...  
\* SKY/WEATHER.....MOSTLY SUNNY.  
\* MAX TEMPERATURE.....89-97...EXCEPT 82-88 RIDGES.  
\* MIN HUMIDITY.....15-25 PERCENT.  
\* 20-FOOT WINDS.....  
\* VALLEYS/LWR SLOPES...UPSLOPE LESS THAN 5 MPH BECOMING NORTH 3 TO  
7 MPH IN THE AFTERNOON.  
\* RIDGES/UPR SLOPES...NORTH WINDS 2 TO 7 MPH.  
\* CWR.....0 PERCENT.  
\* LAL.....1.  
\* HAINES INDEX.....2 (VERY LOW).  
\* MIXING HEIGHT.....10500 FT AGL.  
\* TRANSPORT WINDS.....NORTH UP TO 15 MPH.

.FORECAST DAYS 3 THROUGH 7.....  
.WEDNESDAY...MOSTLY CLEAR. LOWS 55 TO 62. HIGHS 87 TO 98.  
SOUTHWEST WINDS 2 TO 7 MPH.  
.THURSDAY...MOSTLY CLEAR. LOWS 53 TO 59. HIGHS 84 TO 95. WEST  
WINDS 3 TO 8 MPH.  
.FRIDAY...MOSTLY CLEAR. LOWS 49 TO 55. HIGHS 78 TO 89. WEST WINDS  
4 TO 9 MPH.  
.SATURDAY...MOSTLY CLEAR. LOWS 51 TO 56. HIGHS 80 TO 91. WEST  
WINDS 4 TO 9 MPH.  
.SUNDAY...MOSTLY CLEAR. LOWS 52 TO 57. HIGHS 81 TO 92. WEST WINDS  
4 TO 9 MPH.

\$\$

.8-14 DAY OUTLOOK FOR MONDAY JULY 21 THROUGH SUNDAY JULY 27...  
A GREATER CHANCE OF NEAR NORMAL TEMPERATURES AND BELOW NORMAL  
PRECIPITATION AMOUNTS.

\$\$

### 1.2.3. Values

NAME	VALUE
Planning Area Name	07/13/2014 19:27
Incident Name	INC 107
Planning Area Size	21,615 acres

#### Values Inventory

Category	Value	Data Source	Currency	Coverage
BLM Buildings	1	GeoCommunicator / Other Sources	07/21/2010	BLM Lands
BLM Range Allotments	12,809 acres	BLM State offices (compiled by BLM NOC)	06/26/2012	Western United States
Building Clusters: Wheeler, OR	38	US Counties / FGDC Cadastral Subcomm.		Available counties
Campgrounds	3	BLM (NOC) and USFS INFRA	02/21/2014	National (BLM and USFS only)
County: Wheeler, OR	21,617 acres	HSIP 2011, US Census Bureau TIGER data	07/01/2010	National
Est Ground Evac Time: 1-2 Hrs	15,997 acres	National Park Service NIFC	11/01/2012	CONUS
Est Ground Evac Time: 2-4 Hrs	5,620 acres	National Park Service NIFC	11/01/2012	CONUS
Habitat: Bull Trout	5.2 miles	FWS Geospatial Services	12/13/2013	National
Habitat: Steelhead	20.0 miles	FWS Geospatial Services	12/13/2013	National
Jurisdictional Agency: BLM	3,148 acres	Various	09/05/2013	National
Natl Scenic Byways	9.8 miles	Various	varies by data source	National
Roads	10.4 miles	NAVTEQ	11/2012	National

#### Coverage of Values Queried that Produced No Results

BLM Horse and Burro (OR, ID, MT, CA, NV, UT, WY, CO, AZ, NM), BLM Oil / Gas Leases (Western United States), Class 1 Airsheds (National), Communication Towers (National), Electric Power Plants (National), Electric Sub Stations (National), Electric Transmission Lines (National), IRA (National), Mines (National), NPS Buildings (National), NRA (National), Natl Historic Trails (National), Natl Recreation Trails (National), Natl Scenic Trails (National), Oil and Gas Pipelines (National), Other Areas (National), Ozone Non-Attainment (National), Particulates Non-Attainment (National), Responsible Agency (AK, CA, ID, MT, NM, MN), Sage Grouse Habitat (Western United States), TNC Lands (National), USFS Buildings (National), USFWS Trails (National), WSA (National), Wilderness (National)

### 1.3. Objectives

#### Incident FMU/Strategic Objective Code List

Unit	FMU/Strat Obj Code	Acres
ORPRD	25	124
ORPRD	41	765
ORPRD	OR-PRD-02 - Wild and Scenic	0
ORPRD	OR-PRD-04 - Private Lands and Infrastructure	0
ORPRD	OR-PRD-05 - Heritage Resources	0
ORPRD	OR-PRD-06 - Anadromous and Native Fish	0
ORPRD	OR-PRD-07 - Two Rivers FMU	0

#### Spatial Fire Planning Inventory

There is no Spatial Inventory to display.

#### Incident Objective List

Activated	Incident Objective
07/13/2014	<ul style="list-style-type: none"> <li>• Provide for firefighter and public safety.</li> <li>• Protect developed recreation sites at Service Creek and Muleshoe.</li> <li>• Provide for public safety along river and highway for recreation traffic.</li> <li>• Minimize acres burned.</li> </ul>

#### Incident Requirement List

Activated	Incident Requirement
07/13/2014	Maintain and protect wild and scenic river values along the John Day river.
07/13/2014	Minimize ground disturbing activities near sensitive plant populations.

#### Strategic Objective List

Unit	Shape/ FMU	Activated	Strategic Objective
ORPRD	OR-PRD-02	07/10/2009	The entire Lower Deschutes River has Wild and Scenic designation. Maintain and protect Wild and Scenic River values.
ORPRD	OR-PRD-04	07/10/2009	Public lands along the river is primarily confined to the river canyon. Adjacent private lands located at the tops of canyons are largely used for wheat growing. Wildfires which threaten these fields are an economic concern. Often wheat growers and other land owners may take independent fire suppression actions, situational awareness of these actions is important. Irrigation pumps and water lines may also be located in the river. Protect adjacent private lands, improvements and infrastructure. Protect railroad and operations of trains. Protect operation of BPA power transmission lines.
ORPRD	OR-PRD-05	07/10/2009	Protect heritage resources from suppression damage.
ORPRD	OR-PRD-06	07/10/2009	River provides habitat for listed stocks of anadromous fish, and Bull Trout. Protect fish habitat from suppression damage.
ORPRD	OR-PRD-07	07/21/2009	Minimize acres burned on private lands. This is a high priority suppression area because of adjacent land values and for political reasons.



Management Requirement List

Unit	Shape/FMU	Activated	Management Requirement
ORPRD	OR-PRD-02	07/10/2009	Restrict dozer use in W&S segments considering other objectives. Fugitive retardant is recommended.
ORPRD	OR-PRD-04	07/10/2009	Establish and maintain contact with permittees, shareholders and adjacent landowners. Establish contact with Sante Fe - Burlington Northern Railroad. Establish contact with BPA and other utility operators. Lines may be hazard to aircraft operations.
ORPRD	OR-PRD-05	07/10/2009	Contact District Archeologist. Assign resource advisor.
ORPRD	OR-PRD-06	07/10/2009	Avoid retardant application to both live and dry streamcourses. Use of dozers should be sensitive to riparian and stream habitat.
ORPRD	OR-PRD-07	07/21/2009	Minimize the use of earth moving equipment and rehabilitate constructed firelines prior to releasing equipment if utilized. Use natural barriers and fuels breaks to contain fires. Assign a resource advisor to any fire that is expected to have extended attack. Ensure there are no unacceptable impacts to cultural resources or T&E species.

## 1.4. Course of Action

### Estimated Cost

NAME	VALUE
Estimated Cost	\$300,000
Method(s) Used	Historic Costs

### Course of Action

Active	Inactive	Action Item
07/13/2014		<ul style="list-style-type: none"><li>• Keep fire east and north of Hwy 19, west of Muleshoe Creek, and south of Winlock Ln (Muddy Cr.)</li><li>• Provide for firefighter and public safety.</li><li>• Protect developed recreation sites at Service Creek and Muleshoe.</li><li>• Provide for public safety along river and highway for recreation traffic.</li><li>• Minimize acres burned.</li></ul>

## 1.5. Validation

The fire started on Oregon Department of Forestry (ODF) protected private land and quickly moved onto Bureau of Land Management (BLM) administered lands. ODF originally took command of the fire, but will be transitioning to a BLM incident commander at 1800 on 7/13/14.

### Validation History

Date (CDT)	User	Action	Comments
07/13/2014 16:33	Schultz, David	Strategic Objectives Not Being Satisfied	The fire has moved into extended attack and a new decision is needed.
07/13/2014 18:13	Schultz, David	Incident and Strategic Objectives Being Satisfied	This is a valid course of action based on location, seasonality, values at risk and risk rating.
07/13/2014 18:13	Schultz, David	Decision created	
07/13/2014 18:22	Schultz, David	The proposed Course of Action will satisfy the Objectives	This is a valid course of action based on location, seasonality, values at risk and risk rating.

### Relative Risk

NAME	VALUE
Relative Risk	High
Duration	Moderate
Saved By	Schultz, David
Completed	07/13/2014 18:09 CDT

### Relative Risk Notes

Relative Risk is high due to high Probability; early season, dry fuels, moderate amount of barriers to fire spread. Values and Hazards are moderate.

### Values Notes

Currently not within the wild and scenic corridor. Limited recreation activities occurring.

### Hazards Notes

Fuels are moderate in continuity and loading.

### Probability Notes

Some barriers to fire spread exist; roads, rocky areas, and the river. Fuel moistures are very dry with a moderate cheatgrass component.

### Organization Assessment

NAME	VALUE
Org Assessment Result	Type 2
Unit Recommended Org	Type 3
Saved By	Schultz, David
Completed	07/13/2014 18:09 CDT

### Organization Assessment Notes

Current strategy and tactics are meeting fire suppression objectives. Limited number of resources on scene maintains a good span of control. Recommend Type 3 organization continues suppression actions.

### Relative Risk Notes

Relative Risk is high due to high Probability; early season, dry fuels, moderate amount of barriers to fire spread. Values and Hazards are moderate.

### **Implementation Difficulty Notes**

Difficult terrain will limit firefighting resources' effectiveness. Success may depend on aerial resources.

### **Socio/Political Concerns Notes**

Few concerns exist socially and politically. Some ownership concerns; unified command, more than one jurisdiction, disputes over suppression responsibility.

## 1.6. Rationale

Providing for firefighter and public safety is always the number one priority. Fighting fire safely and aggressively to keep the fire within the perimeter defined in the course of action addresses this priority. We believe the course of action that we have selected best provides for protection of the values at risk, responds adequately to current and expected conditions, and addresses social/economic concerns.