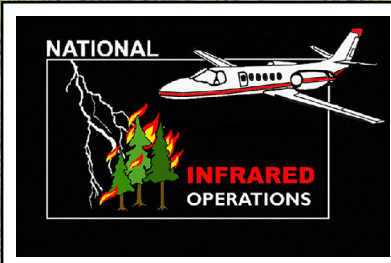





123°54'30"W 123°54'0"W 123°53'30"W 123°53'0"W 123°52'30"W 123°52'0"W 123°51'30"W 123°51'0"W 123°50'30"W 123°50'0"W 123°49'30"W

42°7'30"N  
42°7'0"N  
42°6'30"N  
42°6'0"N  
42°5'30"N  
42°5'0"N  
42°4'30"N  
42°4'0"N  
42°3'30"N  
42°3'0"N  
42°2'30"N  
42°2'0"N

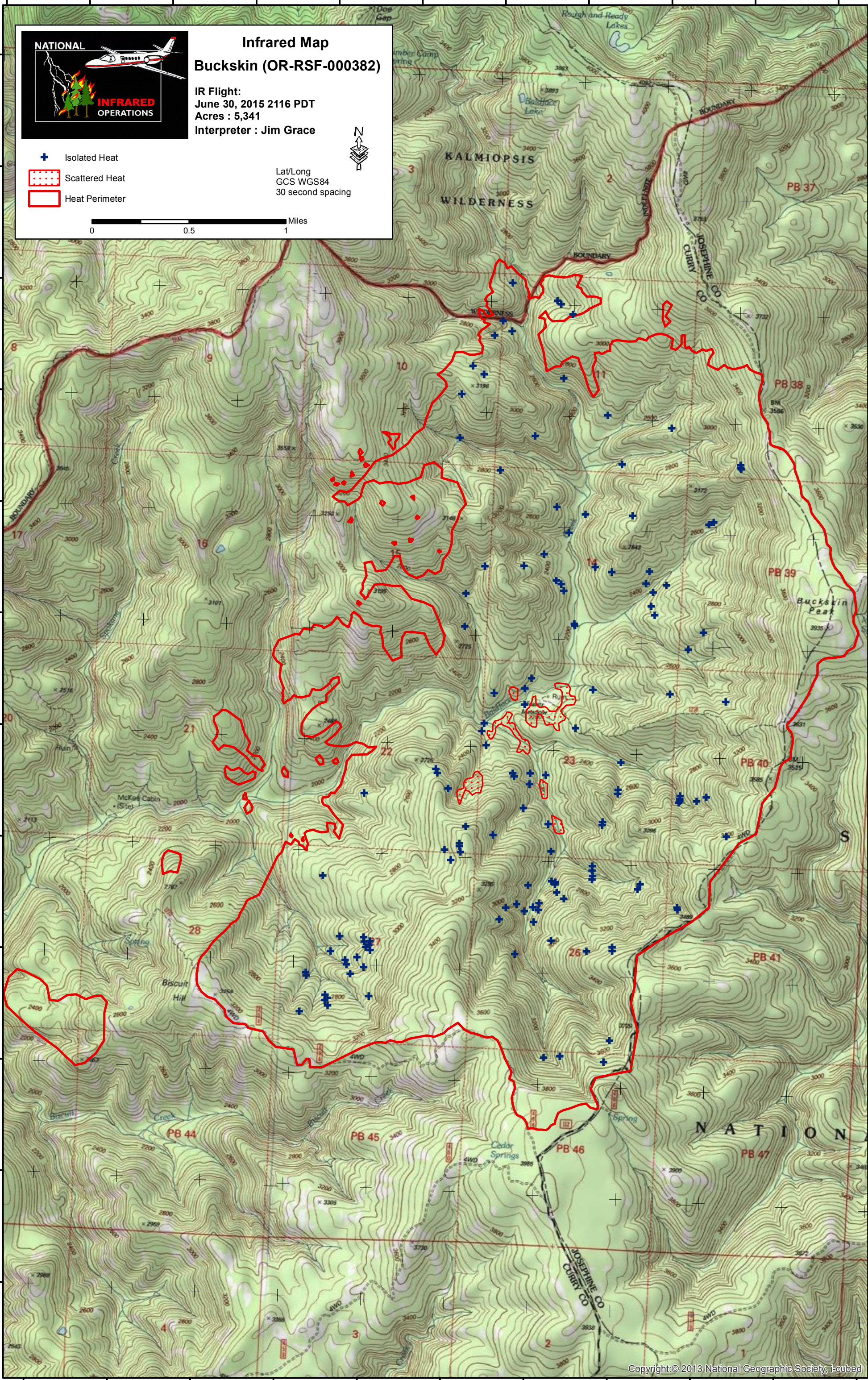
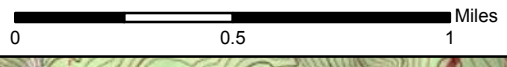
42°7'30"N  
42°7'0"N  
42°6'30"N  
42°6'0"N  
42°5'30"N  
42°5'0"N  
42°4'30"N  
42°4'0"N  
42°3'30"N  
42°3'0"N  
42°2'30"N  
42°2'0"N



**Infrared Map**  
**Buckskin (OR-RSF-000382)**  
IR Flight:  
June 30, 2015 2116 PDT  
Acres : 5,341  
Interpreter : Jim Grace

-  Isolated Heat
-  Scattered Heat
-  Heat Perimeter

Lat/Long  
GCS WGS84  
30 second spacing



123°54'0"W 123°53'30"W 123°53'0"W 123°52'30"W 123°52'0"W 123°51'30"W 123°51'0"W 123°50'30"W 123°50'0"W 123°49'30"W 123°49'0"W