

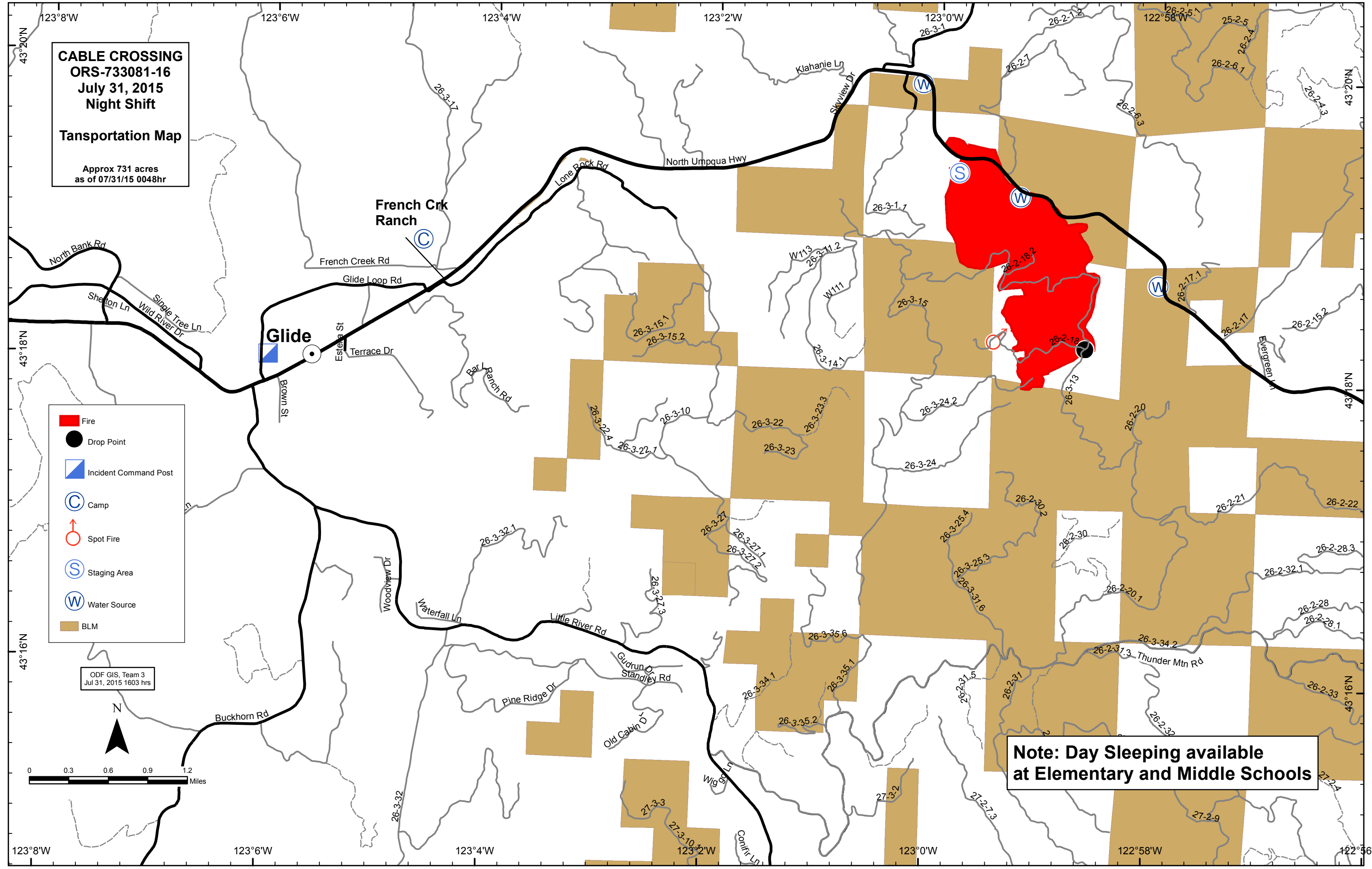
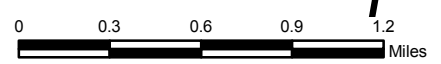
**CABLE CROSSING**  
**ORS-733081-16**  
**July 31, 2015**  
**Night Shift**

**Transportation Map**

Approx 731 acres  
as of 07/31/15 0048hr

- Fire
- Drop Point
- Incident Command Post
- Camp
- Spot Fire
- Staging Area
- Water Source
- BLM

ODF GIS, Team 3  
Jul 31, 2015 1603 hrs



**Note: Day Sleeping available  
at Elementary and Middle Schools**