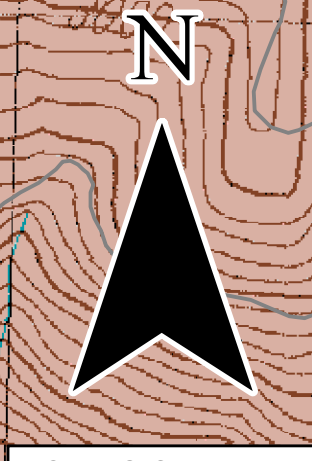


- Legend**
- ( ) Division
  - Houses
  - Uncontrolled Fire Edge
  - Completed Line
  - - - - - Escape Route
  - Drop Point
  - Spot Fire
  - Staging Area
  - Water Source
  - BLM
  - US Forest Service
  - Electric Transmission Lines



0 1,000 2,000 3,000 4,000 Feet

**CABLE CROSSING**  
 ORS-733081-16  
 July 31, 2015  
 Day Shift  
 NAD 1983  
 Situation Map

Approx 553 acres  
 as of 07/30/15 1100hr

ODF GIS, Team 3  
 Jul 31, 2015 0111 hrs