

**CABLE CROSSING  
ORS-733081-16**

**Transportation Map**

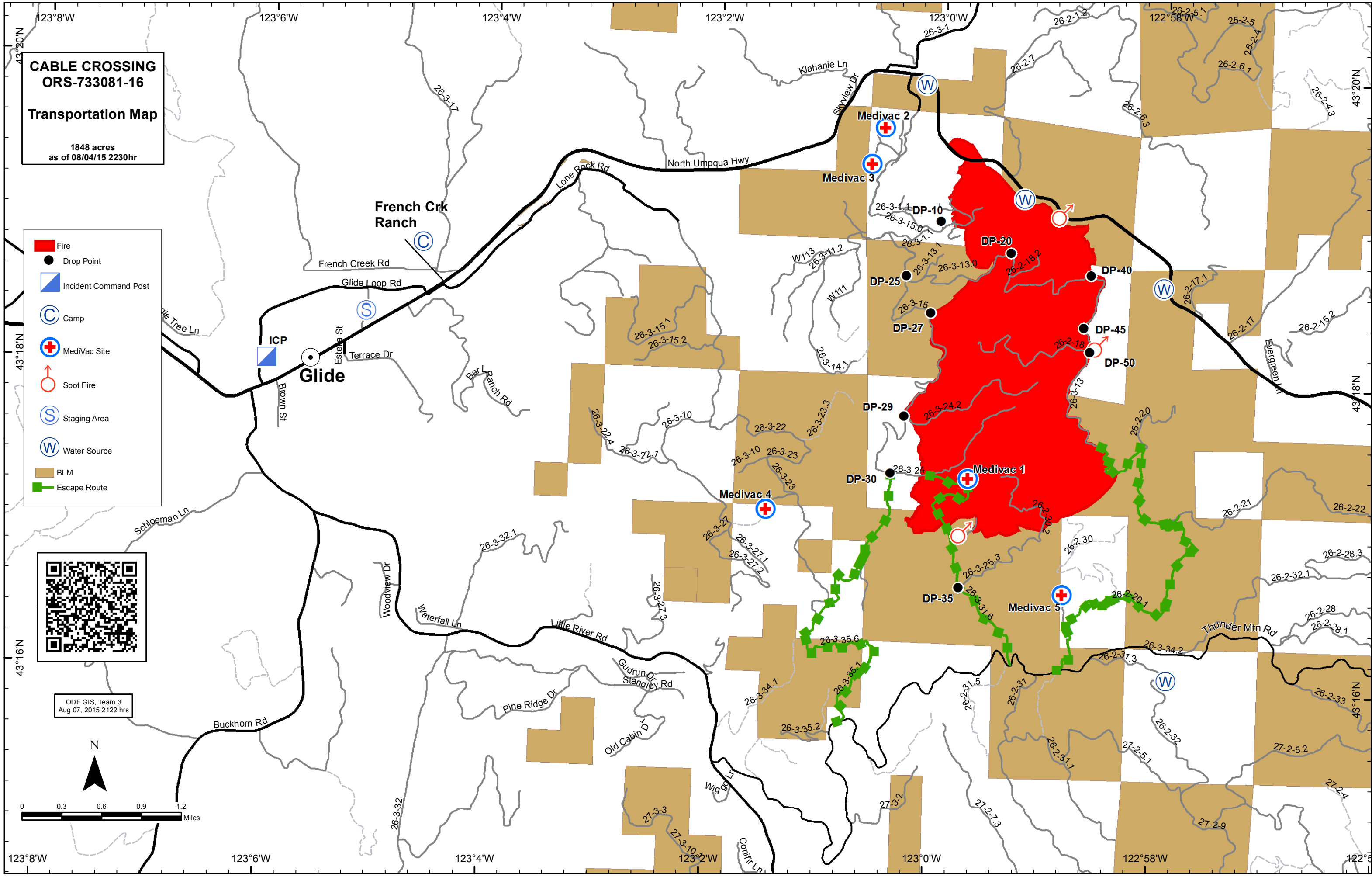
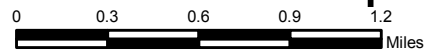
1848 acres  
as of 08/04/15 2230hr

- Fire
- Drop Point
- Incident Command Post
- Camp
- MediVac Site
- Spot Fire
- Staging Area
- Water Source
- BLM
- Escape Route



ODF GIS, Team 3  
Aug 07, 2015 2122 hrs

N



123°8'W 123°6'W 123°4'W 123°2'W 123°0'W 122°58'W 122°56'W

43°20'N 43°18'N 43°16'N 43°14'N 43°12'N 43°10'N 43°8'N 43°6'N 43°4'N 43°2'N