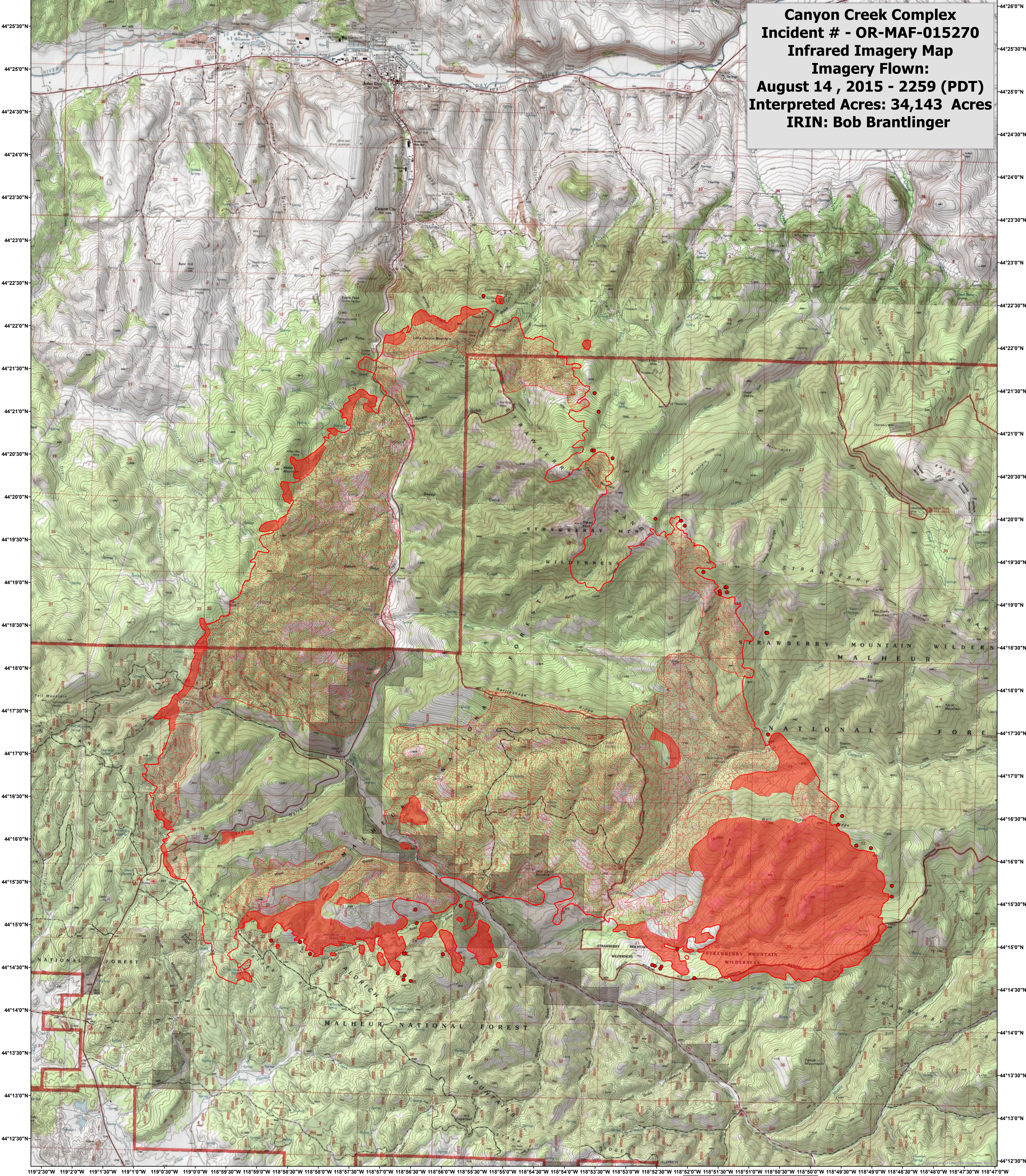

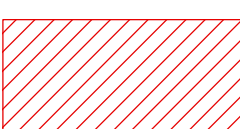
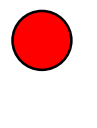
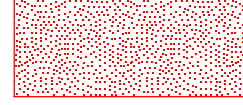


119°3'0"W 119°2'30"W 119°2'0"W 119°1'30"W 119°1'0"W 119°0'30"W 119°0'0"W 118°59'30"W 118°58'30"W 118°57'30"W 118°56'30"W 118°55'30"W 118°54'30"W 118°53'30"W 118°52'30"W 118°51'30"W 118°50'30"W 118°49'30"W 118°48'30"W 118°47'30"W

**Canyon Creek Complex
Incident # - OR-MAF-015270
Infrared Imagery Map
Imagery Flown:
August 14, 2015 - 2259 (PDT)
Interpreted Acres: 34,143 Acres
IRIN: Bob Brantlinger**



Legend

-  **Heat Perimeter**
-  **Intense Heat**
-  **Isolated Heat Source**
-  **Scattered Heat Source**

