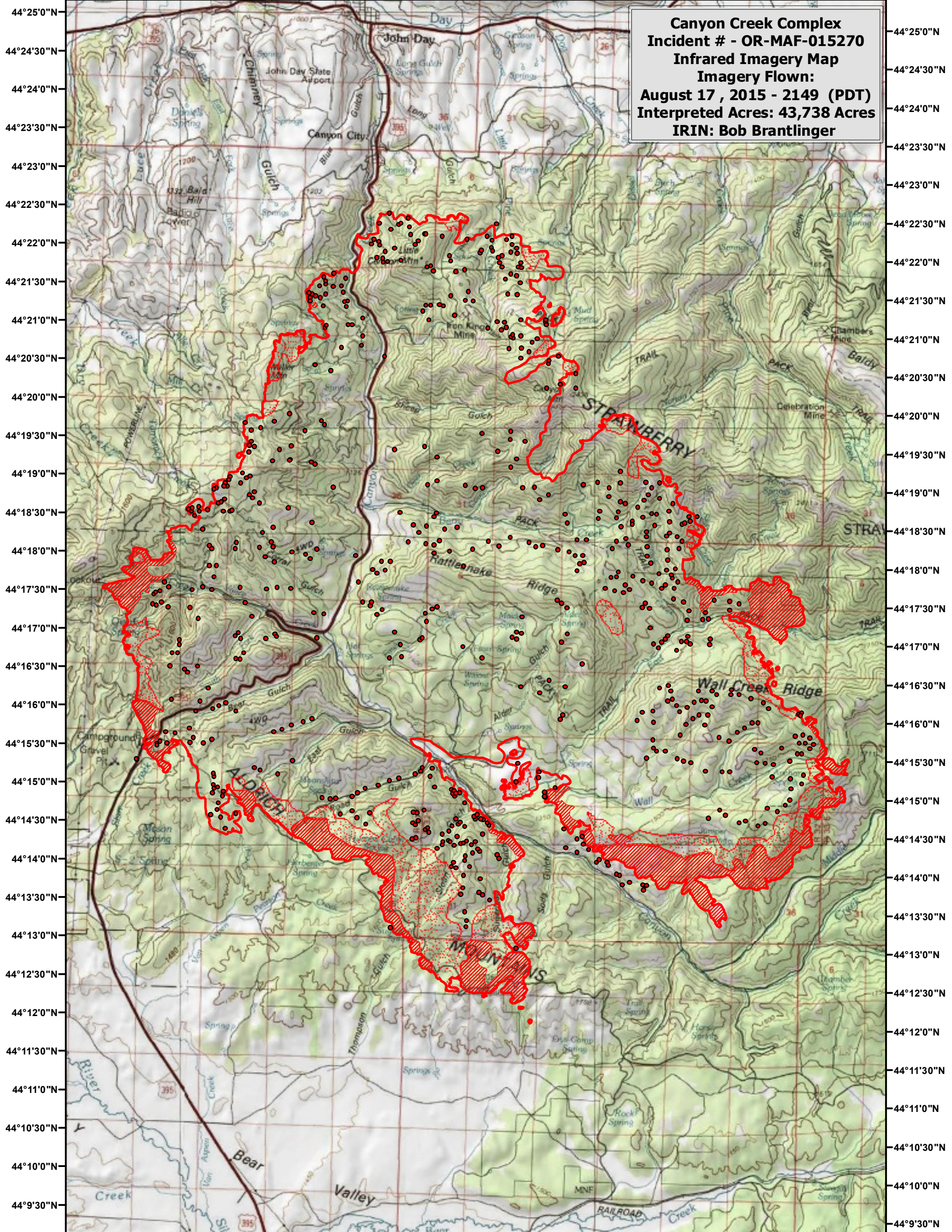



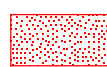


119°2'0"W 119°1'0"W 119°0'0"W 118°58'30"W 118°57'0"W 118°55'30"W 118°54'0"W 118°52'30"W 118°51'0"W 118°49'30"W 118°48'0"W



**Canyon Creek Complex**  
**Incident # - OR-MAF-015270**  
**Infrared Imagery Map**  
**Imagery Flown:**  
**August 17, 2015 - 2149 (PDT)**  
**Interpreted Acres: 43,738 Acres**  
**IRIN: Bob Brantlinger**

**Legend**

-  **Heat Perimeter**
-  **Intense Heat**
-  **Isolated Heat Source**
-  **Scattered Heat Source**

