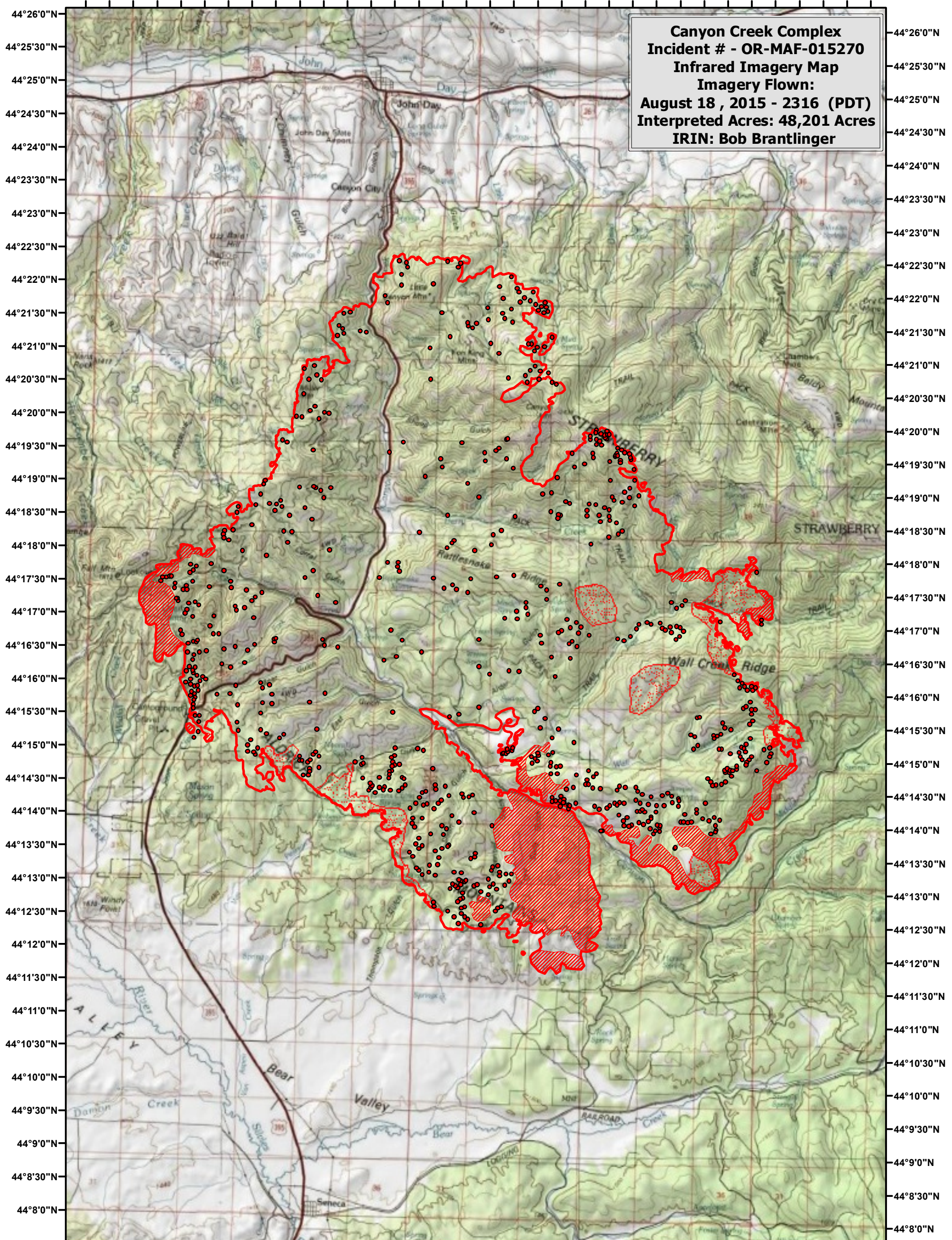



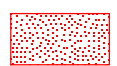


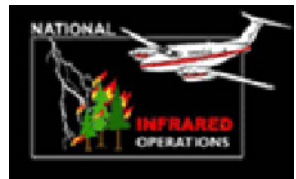
119°3'30"W 119°2'0"W 119°0'30"W 118°59'0"W 118°57'30"W 118°56'0"W 118°54'30"W 118°53'0"W 118°51'30"W 118°50'0"W 118°48'30"W 118°47'0"W

**Canyon Creek Complex
Incident # - OR-MAF-015270
Infrared Imagery Map
Imagery Flown:
August 18, 2015 - 2316 (PDT)
Interpreted Acres: 48,201 Acres
IRIN: Bob Brantlinger**



Legend

-  **Heat Perimeter**
-  **Intense Heat**
-  **Isolated Heat Source**
-  **Scattered Heat Source**



0 1.25 2.5 5 Miles