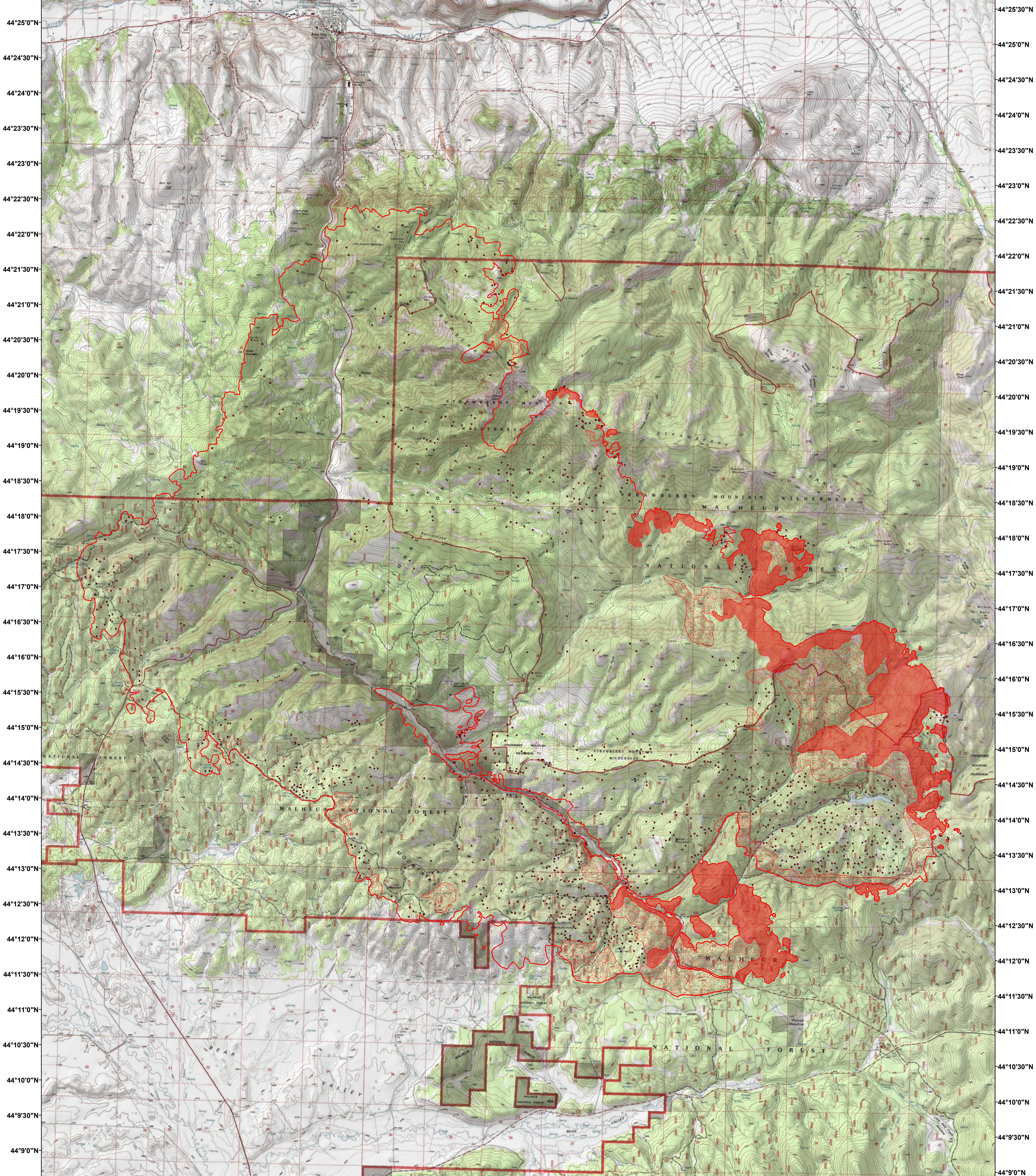



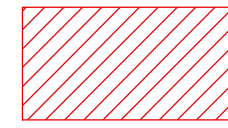
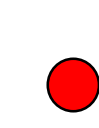
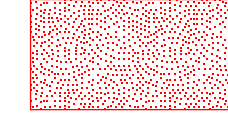
119°2'30"W 119°1'30"W 119°0'30"W 118°59'30"W 118°58'30"W 118°57'30"W 118°56'30"W 118°55'30"W 118°54'30"W 118°53'30"W 118°52'30"W 118°51'30"W 118°50'30"W 118°49'30"W 118°48'30"W 118°47'30"W 118°46'30"W 118°45'30"W 118°44'30"W



119°1'30"W 119°0'30"W 118°59'30"W 118°58'30"W 118°57'30"W 118°56'30"W 118°55'30"W 118°54'30"W 118°53'30"W 118°52'30"W 118°51'30"W 118°50'30"W 118°49'30"W 118°48'30"W 118°47'30"W 118°46'30"W 118°45'30"W 118°44'30"W

Canyon Creek Complex
Incident # - OR-MAF-015270
Infrared Imagery Map
Imagery Flown:
August 21, 2015 - 0004 (PDT)
Interpreted Acres: 61,631 Acres
IRIN: Bob Brantlinger

Legend

-  **Heat Perimeter**
-  **Intense Heat**
-  **Isolated Heat Source**
-  **Scattered Heat Source**

