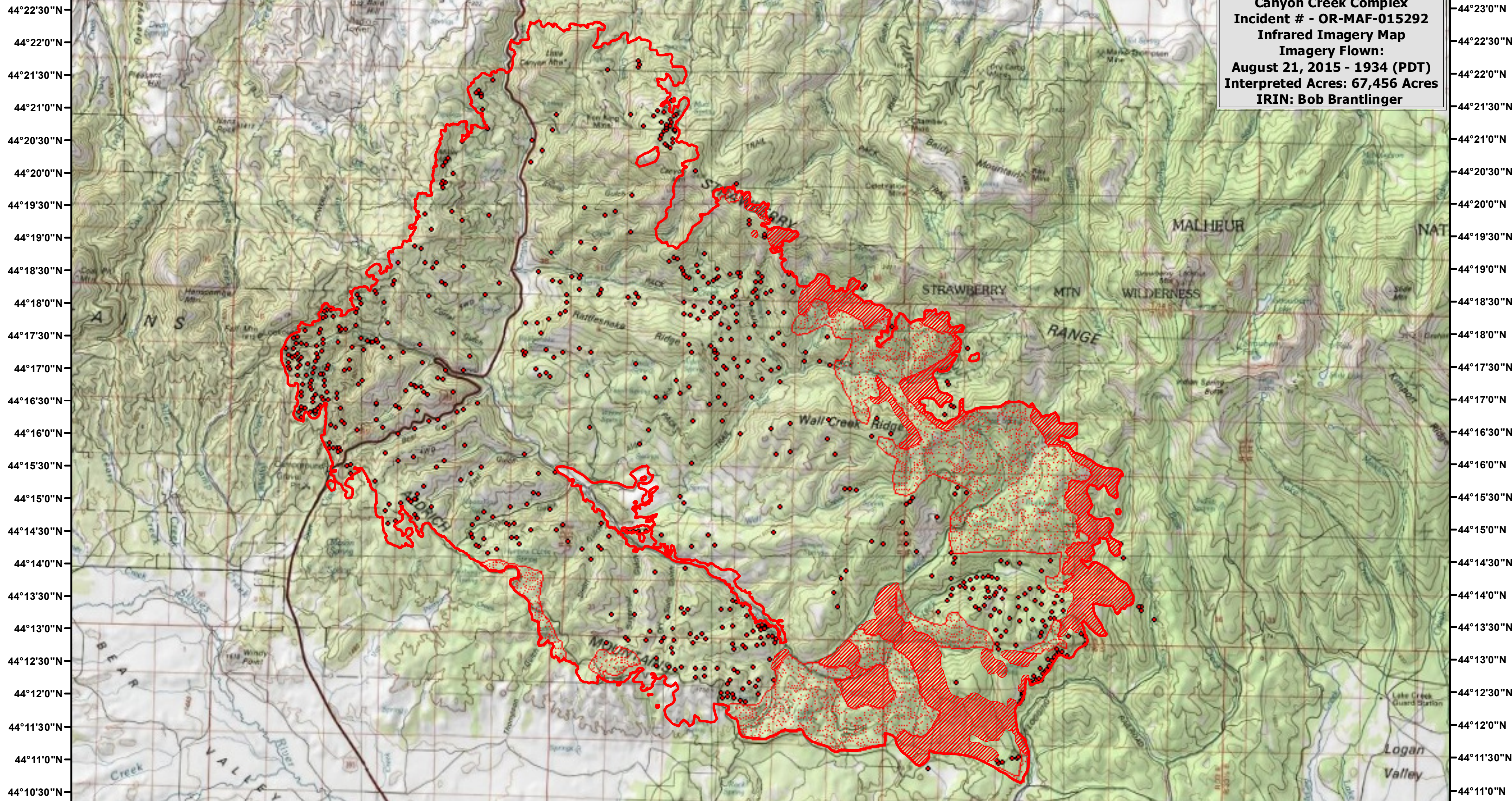


119°6'0"W 119°4'30"W 119°3'0"W 119°1'30"W 119°0'0"W 118°58'30"W 118°57'0"W 118°55'30"W 118°54'0"W 118°52'30"W 118°51'0"W 118°49'30"W 118°48'0"W 118°46'30"W 118°45'0"W 118°43'30"W 118°42'0"W 118°40'30"W 118°39'0"W 118°37'30"W




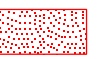


Canyon Creek Complex
Incident # - OR-MAF-015292
Infrared Imagery Map
Imagery Flown:
August 21, 2015 - 1934 (PDT)
Interpreted Acres: 67,456 Acres
IRIN: Bob Brantlinger

44°22'30"N 44°22'0"N 44°21'30"N 44°21'0"N 44°20'30"N 44°20'0"N 44°19'30"N 44°19'0"N 44°18'30"N 44°18'0"N 44°17'30"N 44°17'0"N 44°16'30"N 44°16'0"N 44°15'30"N 44°15'0"N 44°14'30"N 44°14'0"N 44°13'30"N 44°13'0"N 44°12'30"N 44°12'0"N 44°11'30"N 44°11'0"N 44°10'30"N

119°6'0"W 119°4'30"W 119°3'0"W 119°1'30"W 119°0'0"W 118°58'30"W 118°57'0"W 118°55'30"W 118°54'0"W 118°52'30"W 118°51'0"W 118°49'30"W 118°48'0"W 118°46'30"W 118°45'0"W 118°43'30"W 118°42'0"W 118°40'30"W 118°39'0"W 118°37'30"W

Legend

-  **Heat Perimeter**
-  **Intense Heat**
-  **Isolated Heat Source**
-  **Scattered Heat Source**

