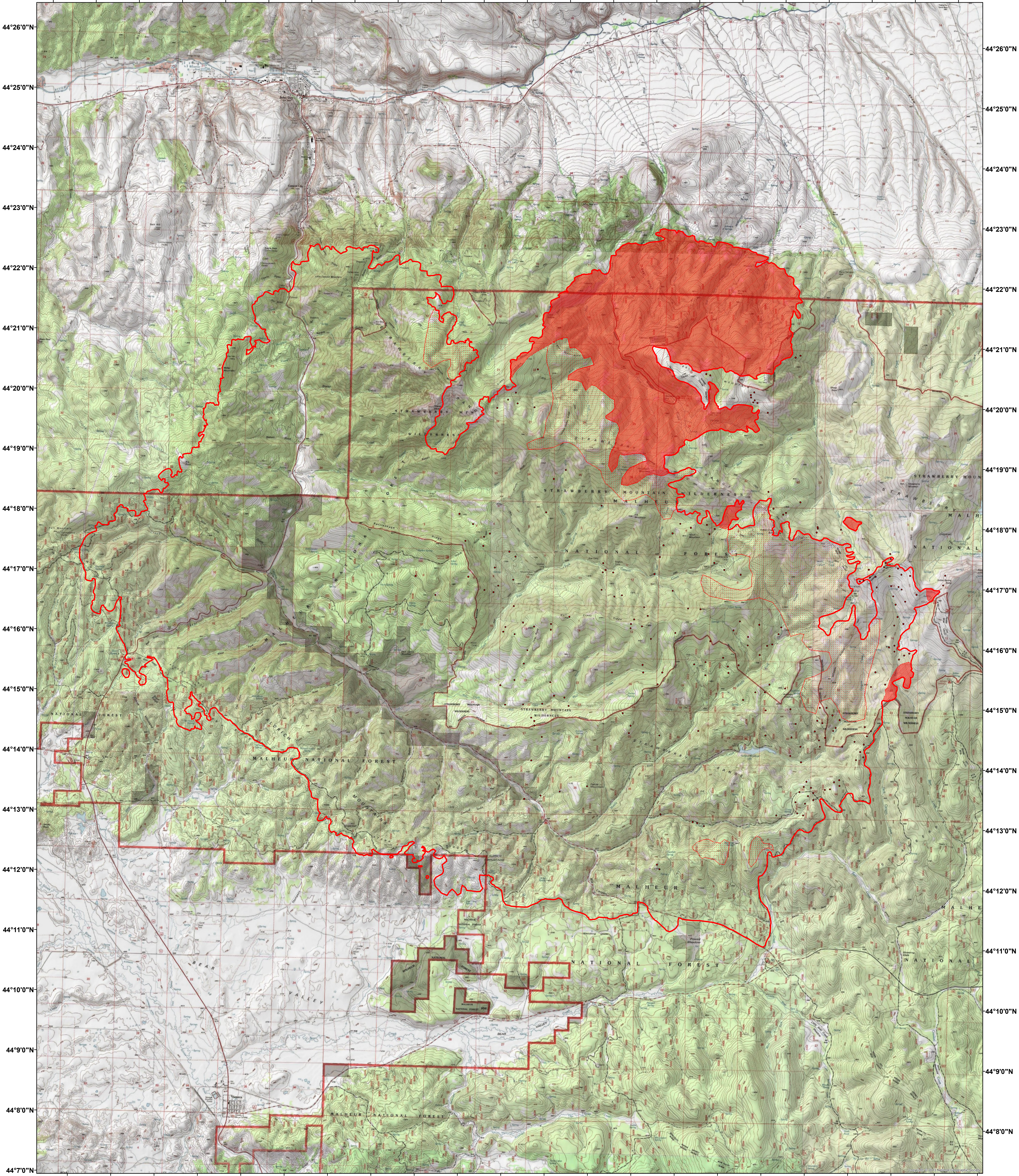



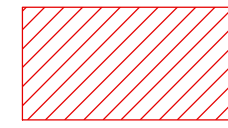
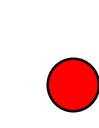
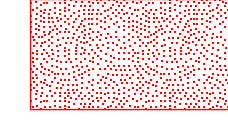
119°3'0"W 119°2'0"W 119°1'0"W 119°0'0"W 118°59'0"W 118°58'0"W 118°57'0"W 118°56'0"W 118°55'0"W 118°54'0"W 118°53'0"W 118°52'0"W 118°51'0"W 118°50'0"W 118°49'0"W 118°48'0"W 118°47'0"W 118°46'0"W 118°45'0"W 118°44'0"W 118°43'0"W 118°42'0"W



119°2'0"W 119°1'0"W 119°0'0"W 118°59'0"W 118°58'0"W 118°57'0"W 118°56'0"W 118°55'0"W 118°54'0"W 118°53'0"W 118°52'0"W 118°51'0"W 118°50'0"W 118°49'0"W 118°48'0"W 118°47'0"W 118°46'0"W 118°45'0"W 118°44'0"W 118°43'0"W 118°42'0"W 118°41'0"W

Canyon Creek Complex
Incident # - OR-MAF-015270
Infrared Imagery Map
Imagery Flown:
August 27, 2015 - 0140 (PDT)
Interpreted Acres: 85,960 Acres
IRIN: Bob Brantlinger

Legend

-  **Heat Perimeter**
-  **Intense Heat**
-  **Isolated Heat Source**
-  **Scattered Heat Source**

