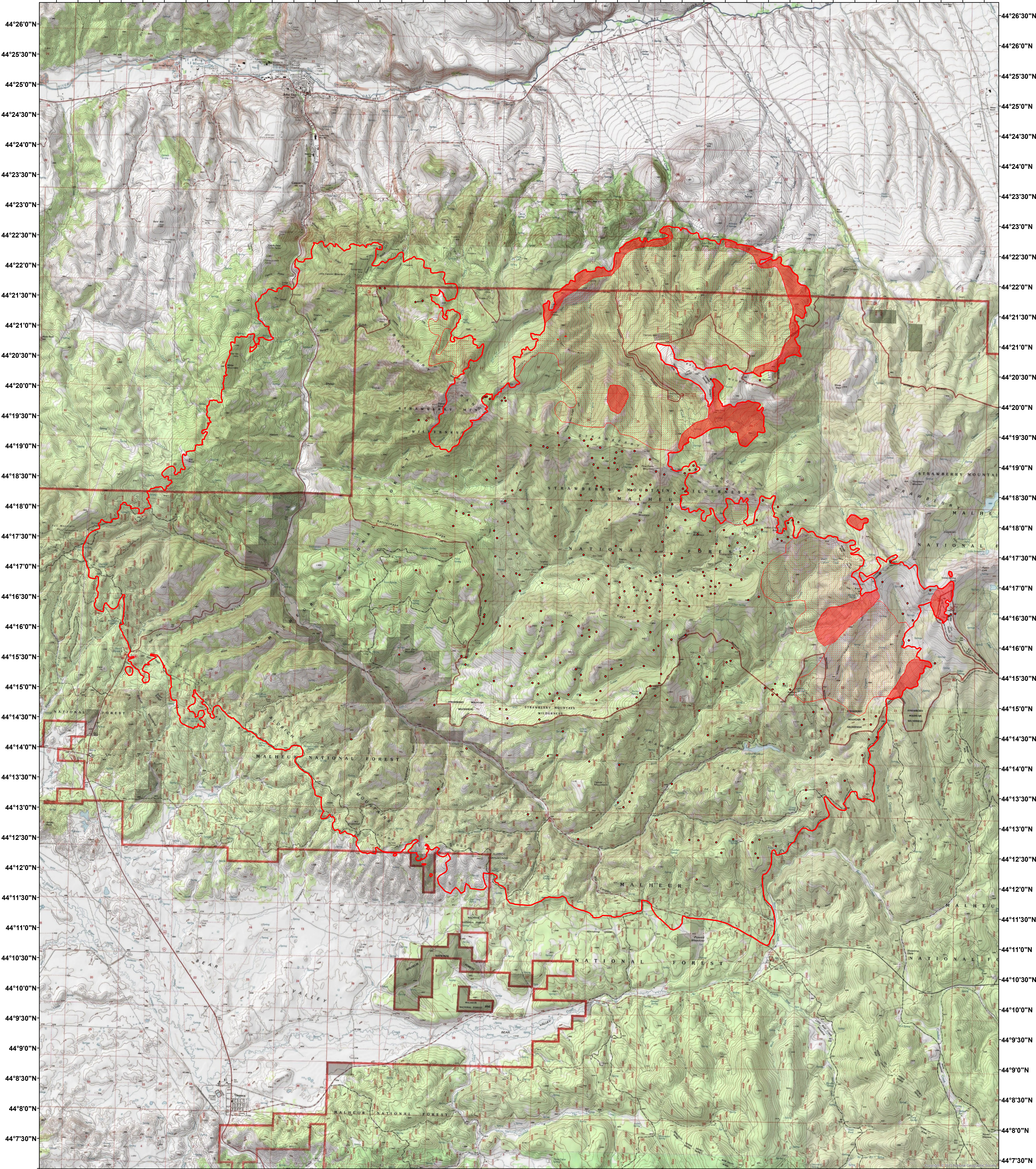



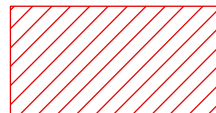
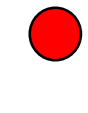
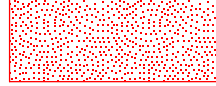
119°2'30"W 119°1'30"W 119°0'30"W 118°59'30"W 118°58'30"W 118°57'30"W 118°56'30"W 118°55'30"W 118°54'30"W 118°53'30"W 118°52'30"W 118°51'30"W 118°50'30"W 118°49'30"W 118°48'30"W 118°47'30"W 118°46'30"W 118°45'30"W 118°44'30"W 118°43'30"W 118°42'30"W 118°41'30"W



119°2'30"W 119°1'30"W 119°0'30"W 118°59'30"W 118°58'30"W 118°57'30"W 118°56'30"W 118°55'30"W 118°54'30"W 118°53'30"W 118°52'30"W 118°51'30"W 118°50'30"W 118°49'30"W 118°48'30"W 118°47'30"W 118°46'30"W 118°45'30"W 118°44'30"W 118°43'30"W 118°42'30"W 118°41'30"W

**Canyon Creek Complex**  
**Incident # - OR-MAF-015292**  
**Infrared Imagery Map**  
**Imagery Flown:**  
**August 28, 2015 - 0144 (PDT)**  
**Interpreted Acres: 86,889 Acres**  
**IRIN: Bob Brantlinger**

**Legend**

-  **Heat Perimeter**
-  **Intense Heat**
-  **Isolated Heat Source**
-  **Scattered Heat Source**

