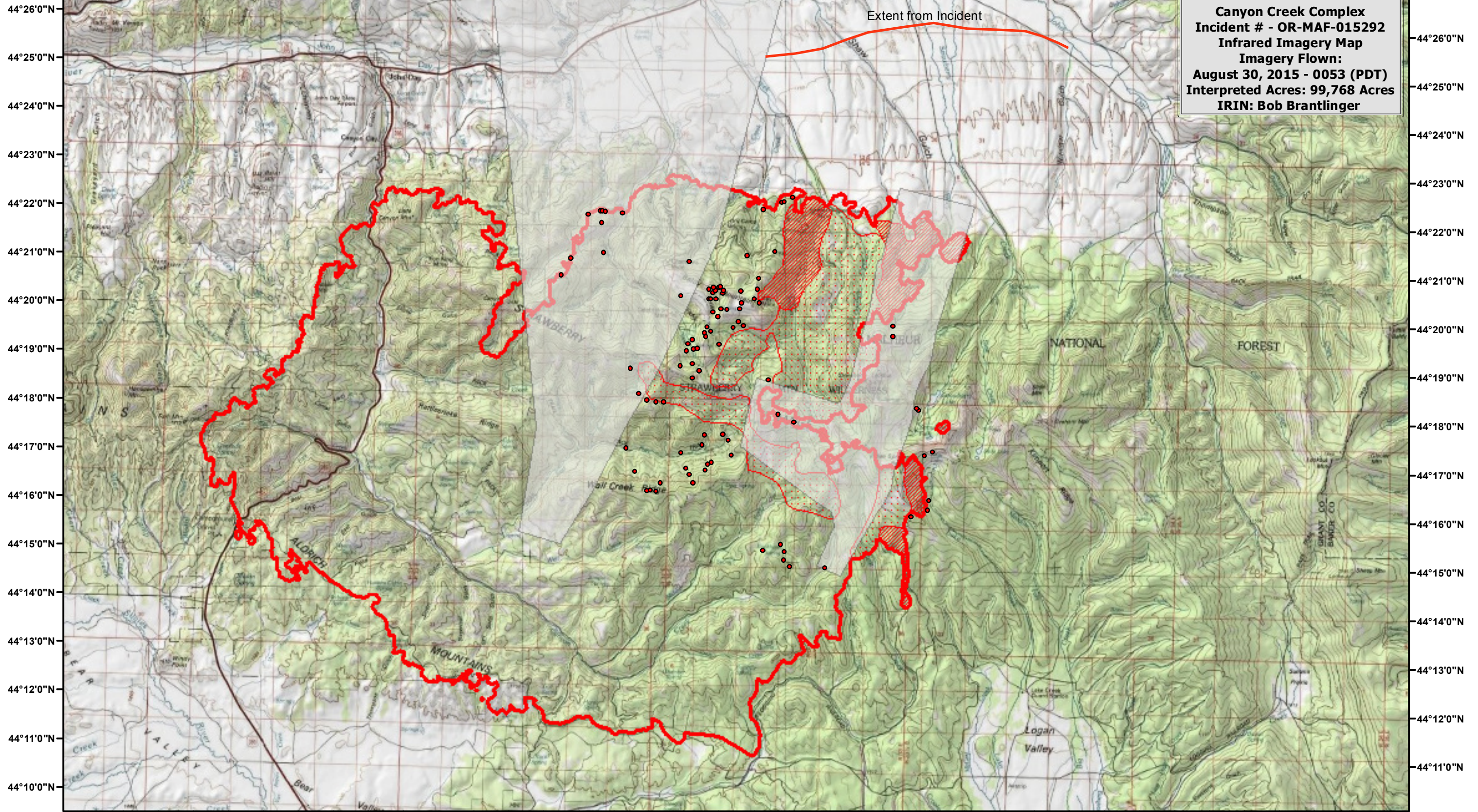



119°6'0"W 119°4'0"W 119°2'0"W 119°0'0"W 118°58'0"W 118°56'0"W 118°54'0"W 118°52'0"W 118°50'0"W 118°48'0"W 118°46'0"W 118°44'0"W 118°42'0"W 118°40'0"W 118°38'0"W 118°36'0"W 118°34'0"W 118°32'0"W 118°30'0"W 118°28'0"W



Canyon Creek Complex
Incident # - OR-MAF-015292
Infrared Imagery Map
Imagery Flown:
August 30, 2015 - 0053 (PDT)
Interpreted Acres: 99,768 Acres
IRIN: Bob Brantlinger

Extent from Incident

Legend

-  **Heat Perimeter**
-  **Intense Heat**
-  **Cloud Cover**
-  **Isolated Heat Source**
-  **Scattered Heat Source**

