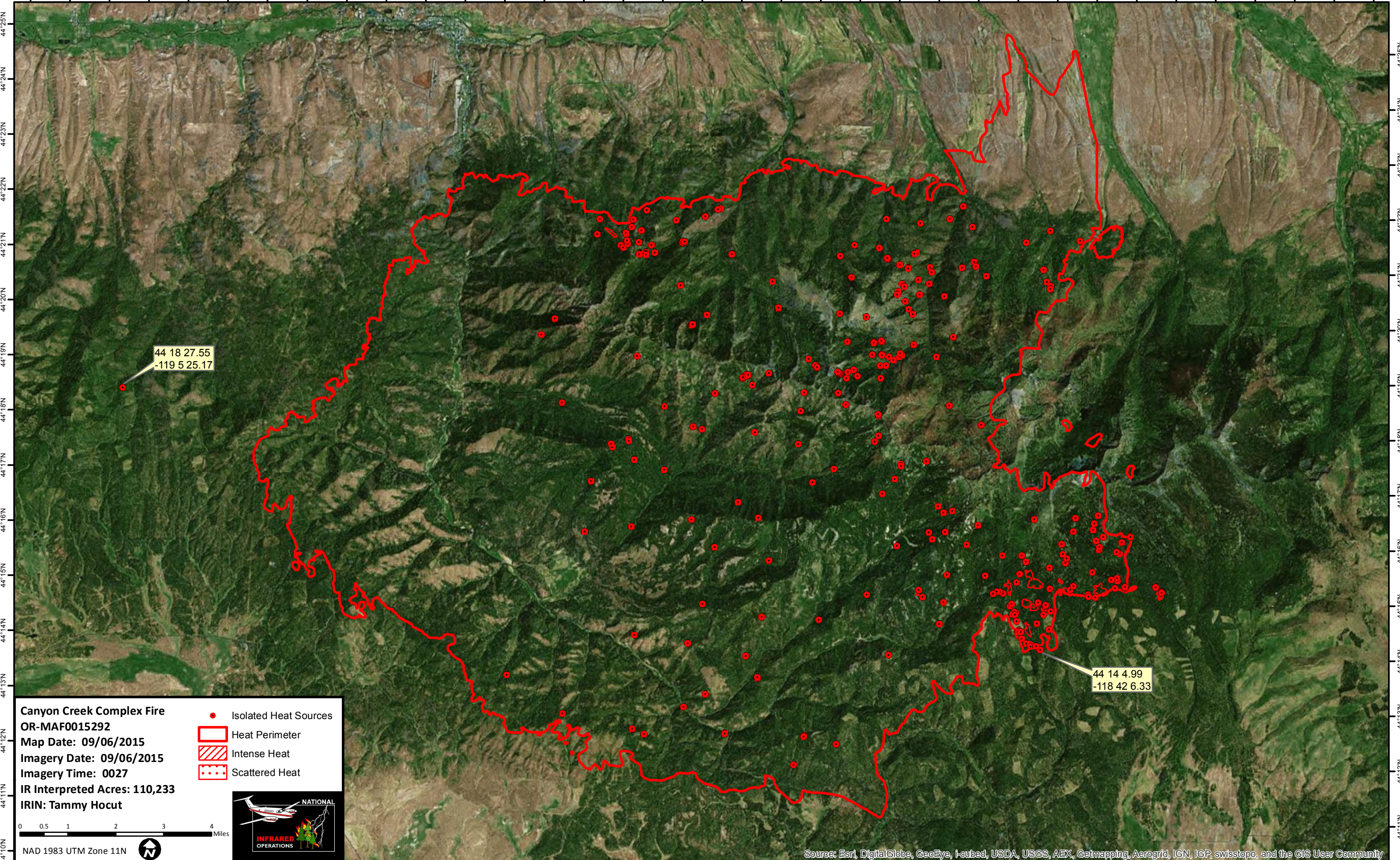


119°8'W 119°7'W 119°6'W 119°5'W 119°4'W 119°3'W 119°2'W 119°1'W 119°0'W 118°59'W 118°58'W 118°57'W 118°56'W 118°55'W 118°54'W 118°53'W 118°52'W 118°51'W 118°50'W 118°49'W 118°48'W 118°47'W 118°46'W 118°45'W 118°44'W 118°43'W 118°42'W 118°41'W 118°40'W 118°39'W 118°38'W 118°37'W 118°36'W 118°35'W 118°34'W



44 18 27.55
-119 5 25.17

44 14 4.99
-118 42 6.33

Canyon Creek Complex Fire
OR-MAF0015292
Map Date: 09/06/2015
Imagery Date: 09/06/2015
Imagery Time: 0027
IR Interpreted Acres: 110,233
IRIN: Tammy Hocut

- Isolated Heat Sources
- Heat Perimeter
- Intense Heat
- Scattered Heat

0 0.5 1 2 3 4 Miles

NAD 1983 UTM Zone 11N

Source: Esri, DigitalGlobe, GeoEye, i-cubed, USDA, USGS, AEX, Getmapping, Aerogrid, IGN, IGP, swisstopo, and the GIS User Community

119°7'W 119°6'W 119°5'W 119°4'W 119°3'W 119°2'W 119°1'W 119°0'W 118°59'W 118°58'W 118°57'W 118°56'W 118°55'W 118°54'W 118°53'W 118°52'W 118°51'W 118°50'W 118°49'W 118°48'W 118°47'W 118°46'W 118°45'W 118°44'W 118°43'W 118°42'W 118°41'W 118°40'W 118°39'W 118°38'W 118°37'W 118°36'W 118°35'W 118°34'W