

119°5'W

119°0'W

118°55'W

118°50'W

118°45'W

118°40'W

118°35'W

44°25'N

44°25'N

44°20'N

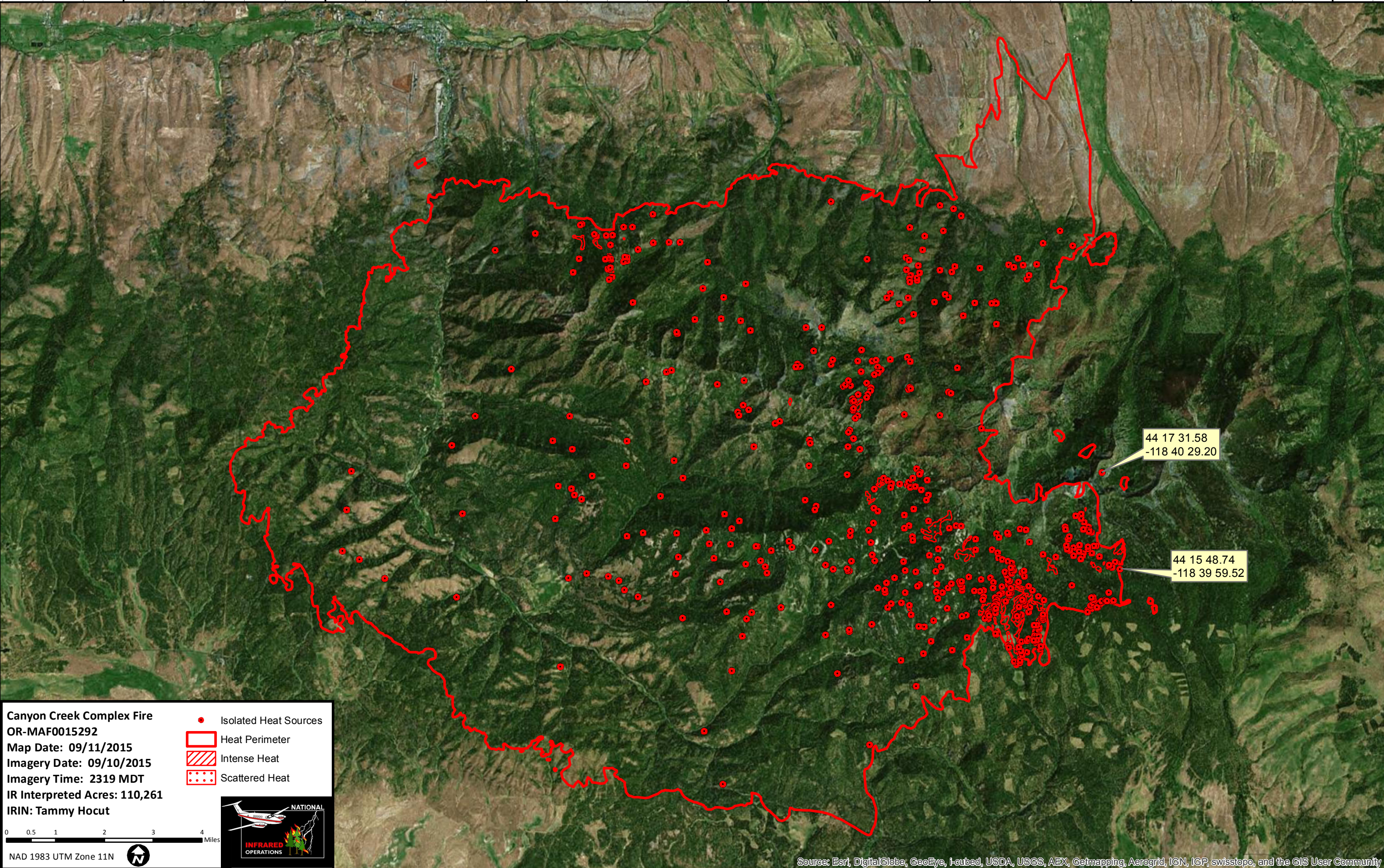
44°20'N

44°15'N

44°15'N

44°10'N

44°10'N

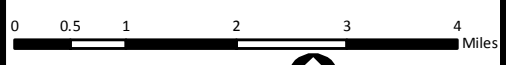


44 17 31.58  
-118 40 29.20

44 15 48.74  
-118 39 59.52

**Canyon Creek Complex Fire**  
**OR-MAF0015292**  
**Map Date: 09/11/2015**  
**Imagery Date: 09/10/2015**  
**Imagery Time: 2319 MDT**  
**IR Interpreted Acres: 110,261**  
**IRIN: Tammy Hocut**

- Isolated Heat Sources
- Heat Perimeter
- Intense Heat
- Scattered Heat



NAD 1983 UTM Zone 11N

Source: Esri, DigitalGlobe, GeoEye, i-cubed, USDA, USGS, AEX, Getmapping, Aerogrid, IGN, IGP, swisstopo, and the GIS User Community

119°5'W

119°0'W

118°55'W

118°50'W

118°45'W

118°40'W

118°35'W