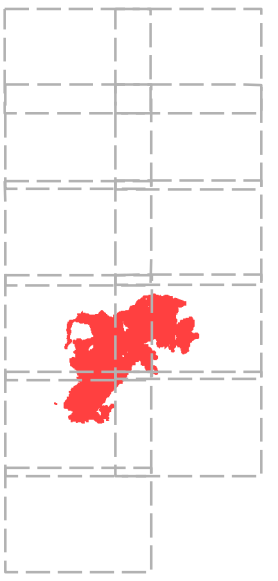
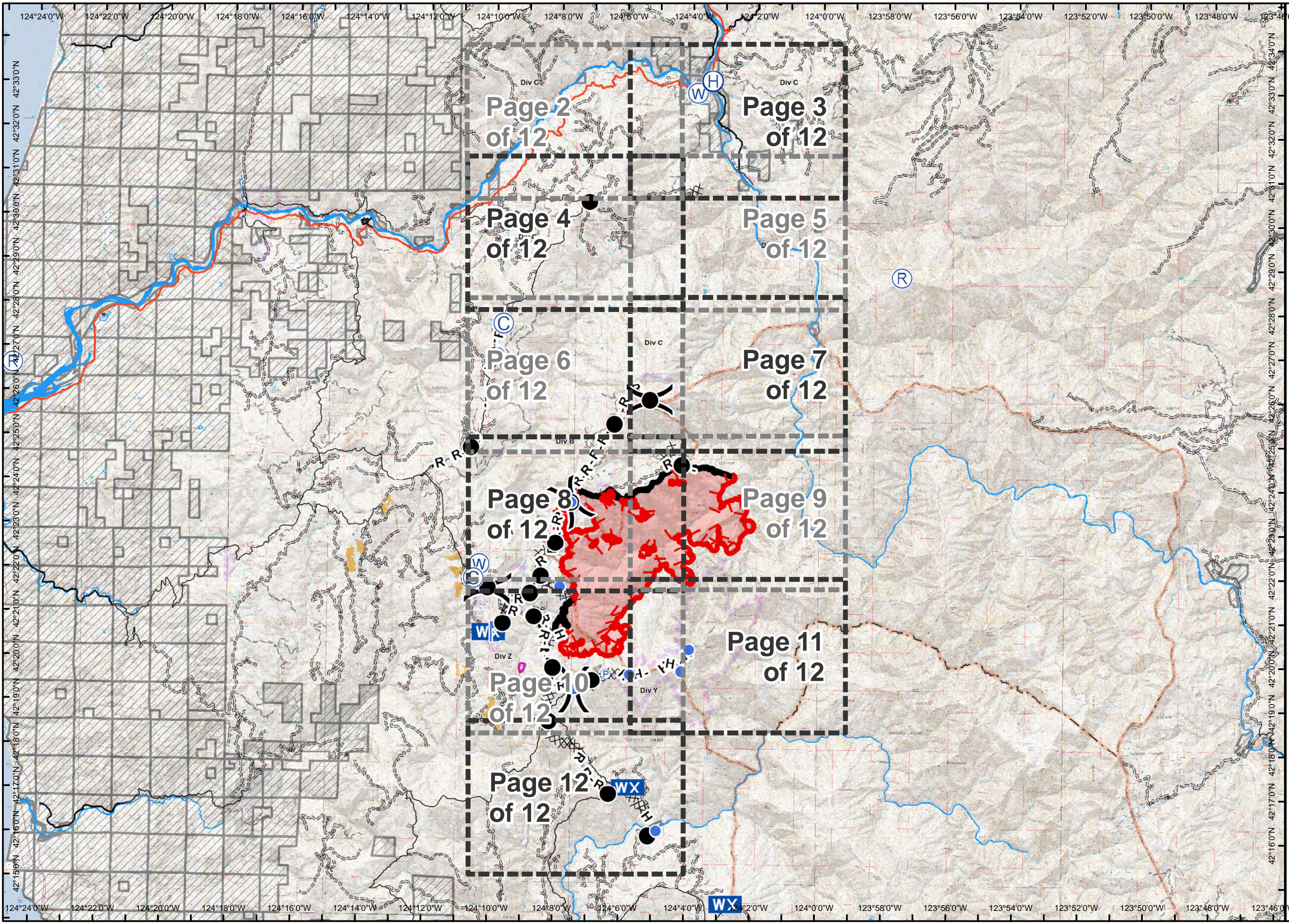


0 0.5  
 Miles

Page 1 of 12



- Legend**
- ( ) Division
  - (C) Camp
  - Drop Point
  - Heispot
  - ⌚ Lookout
  - WX Mobile Weather Unit
  - (R) Repeater
  - (W) Water Source
  - (P) Pump
  - Other
  - Uncontrolled Fire Edge
  - Completed Dozer Line
  - Completed Line
  - H · H Hand Line
  - R · R Road as Completed Line
  - Closed Road
  - === High Clearance Vehicle
  - Suitable for Passenger Cars
  - Botanical Area Boundary
  - Kalmiopsis Wilderness
  - Windy Valley Meadow Protection
  - Long Term Ecosystem Productivity
  - Private Ownership



Page 2  
of 12

Page 3  
of 12

Page 4  
of 12

Page 5  
of 12

Page 6  
of 12

Page 7  
of 12

Page 8  
of 12

Page 9  
of 12

Page 10  
of 12

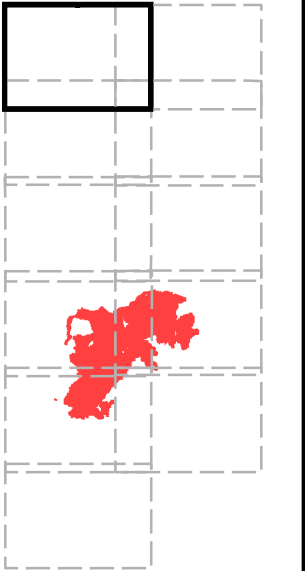
Page 11  
of 12

Page 12  
of 12

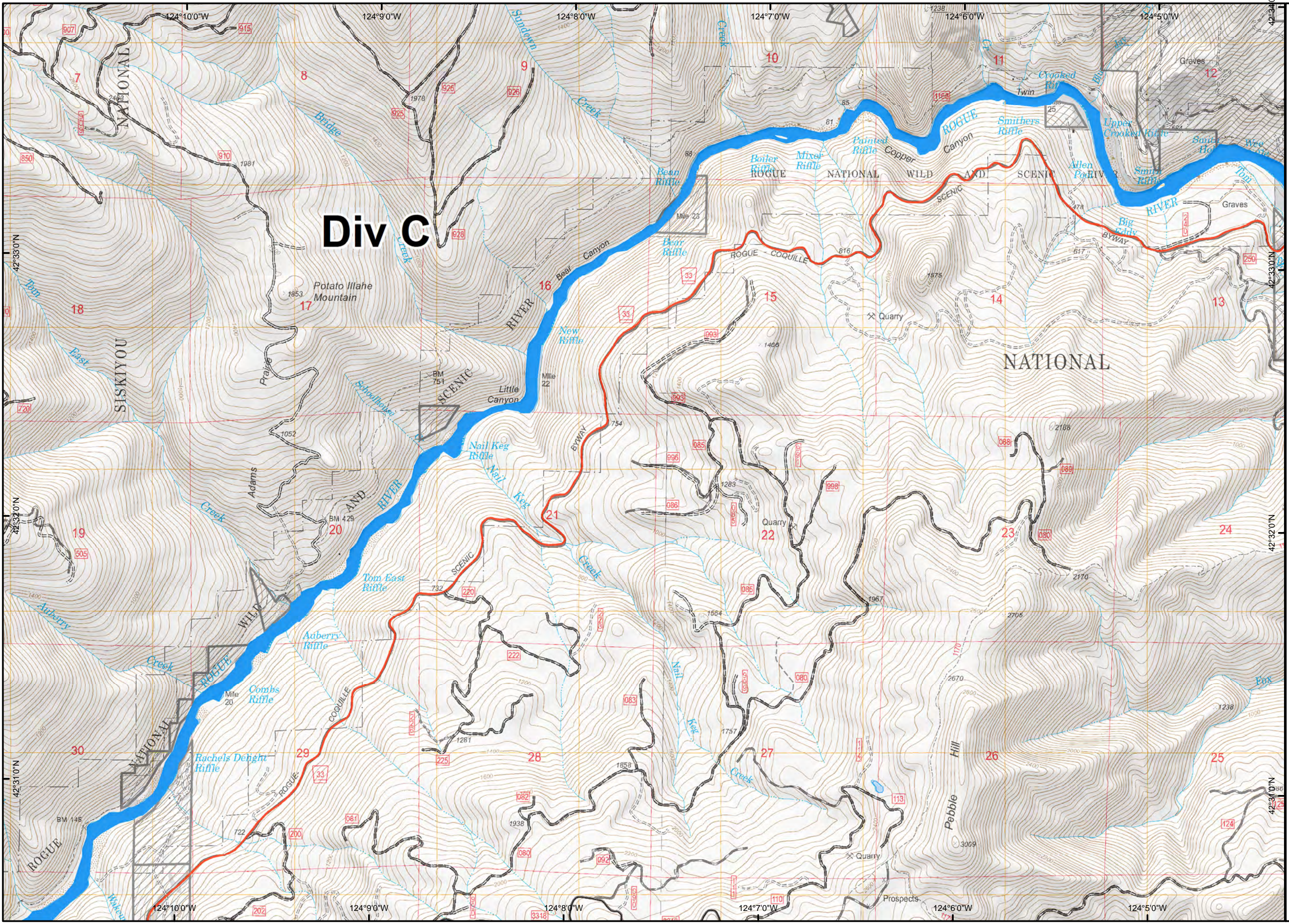
124°24'0"W 124°22'0"W 124°20'0"W 124°18'0"W 124°16'0"W 124°14'0"W 124°12'0"W 124°10'0"W 124°8'0"W 124°6'0"W 124°4'0"W 124°2'0"W 124°0'0"W 123°58'0"W 123°56'0"W 123°54'0"W 123°52'0"W 123°50'0"W 123°48'0"W 123°46'0"W

42°33'0"N 42°32'0"N 42°31'0"N 42°30'0"N 42°29'0"N 42°28'0"N 42°27'0"N 42°26'0"N 42°25'0"N 42°24'0"N 42°23'0"N 42°22'0"N 42°21'0"N 42°20'0"N 42°19'0"N 42°18'0"N 42°17'0"N 42°16'0"N

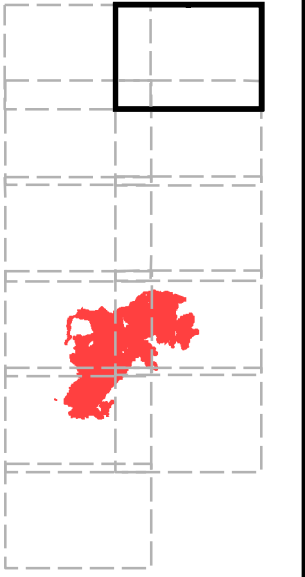




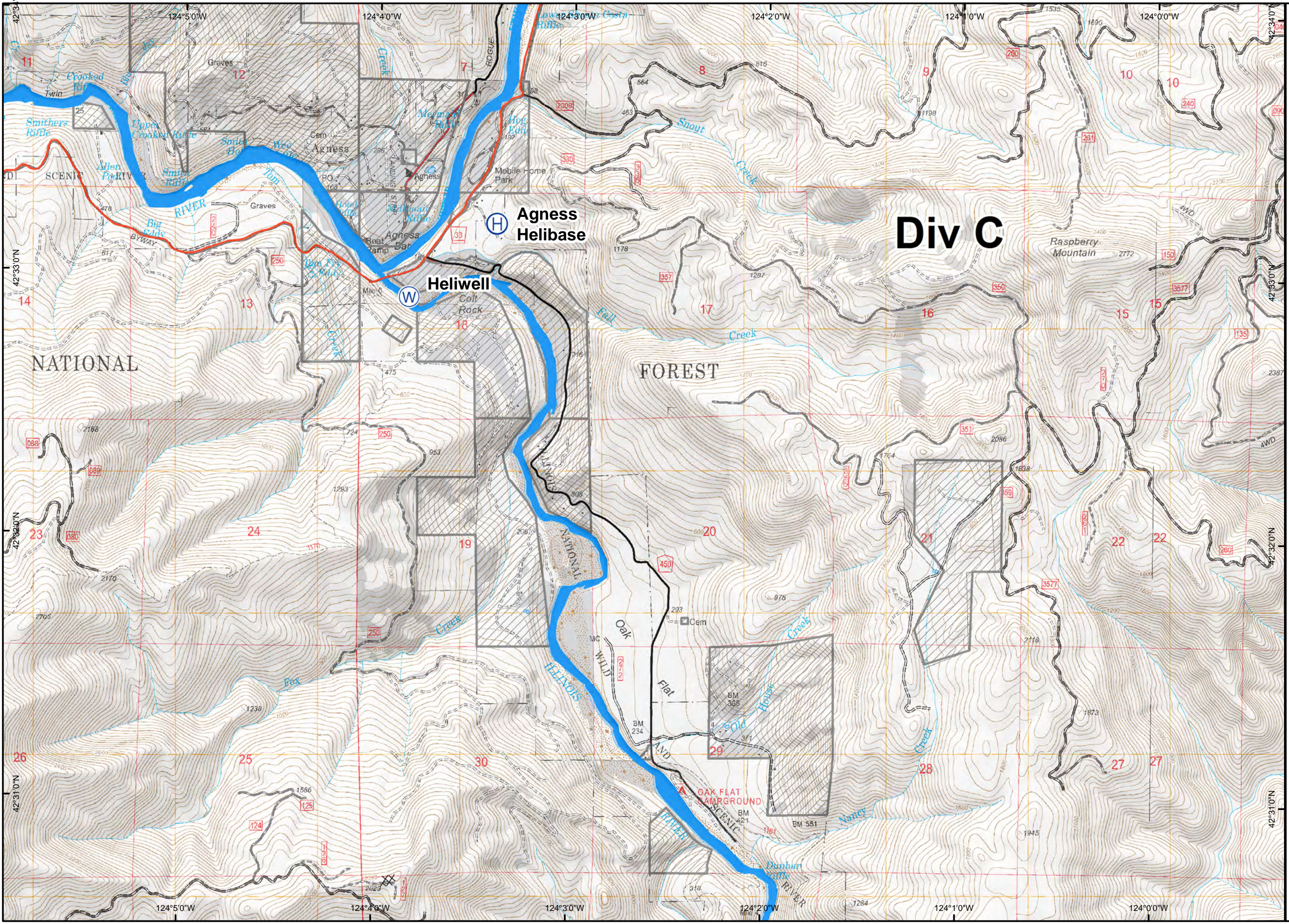
- Legend**
- ( ) Division
  - ⊙ Camp
  - Drop Point
  - Heispost
  - ⌚ Lookout
  - WX Mobile Weather Unit
  - Ⓡ Repeater
  - Ⓜ Water Source
  - Ⓟ Pump
  - Other
  - ┌ Uncontrolled Fire Edge
  - ⊗ Completed Dozer Line
  - ▬ Completed Line
  - H · H Hand Line
  - R · R Road as Completed Line
  - Closed Road
  - === High Clearance Vehicle
  - Suitable for Passenger Cars
  - Botanical Area Boundary
  - Kalmiopsis Wilderness
  - Windy Valley Meadow Protection
  - Long Term Ecosystem Productivity
  - Private Ownership



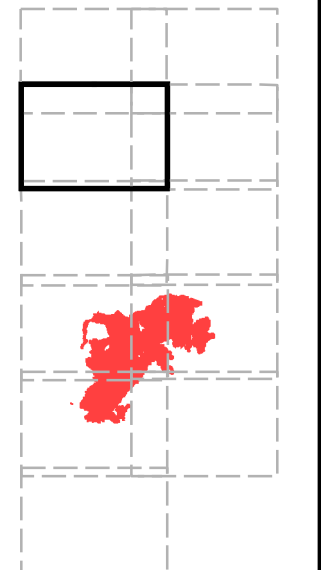




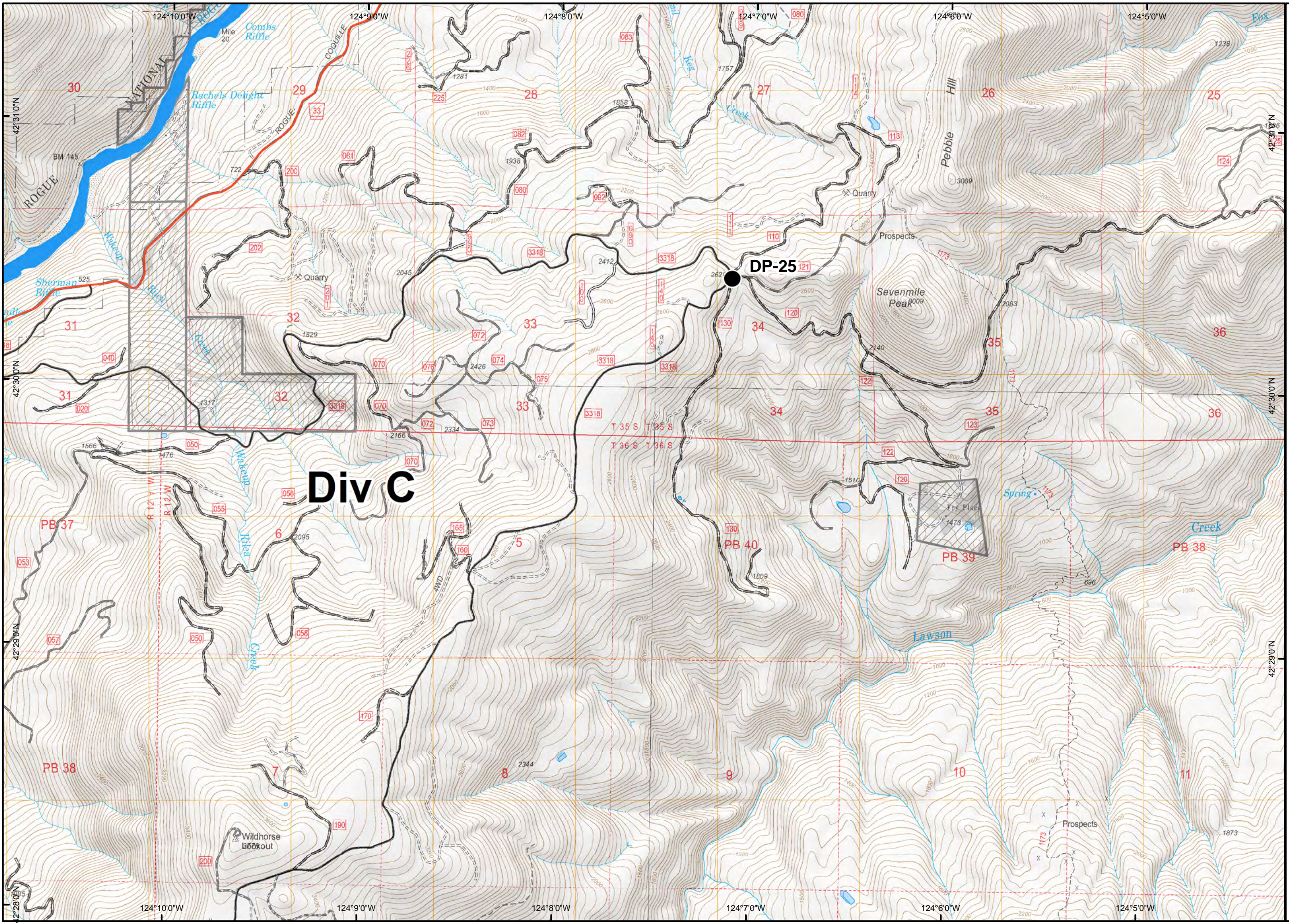
- Legend**
- ( ) Division
  - (C) Camp
  - Drop Point
  - Helispot
  - ⌚ Lookout
  - WX Mobile Weather Unit
  - (R) Repeater
  - (W) Water Source
  - (P) Pump
  - Other
  - Uncontrolled Fire Edge
  - XXXX Completed Dozer Line
  - Completed Line
  - H · H Hand Line
  - R · R Road as Completed Line
  - Closed Road
  - === High Clearance Vehicle
  - Suitable for Passenger Cars
  - Botanical Area Boundary
  - Kalmiopsis Wilderness
  - Windy Valley Meadow Protection
  - Long Term Ecosystem Productivity
  - Private Ownership



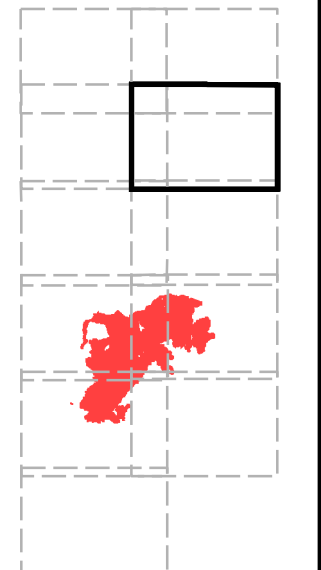




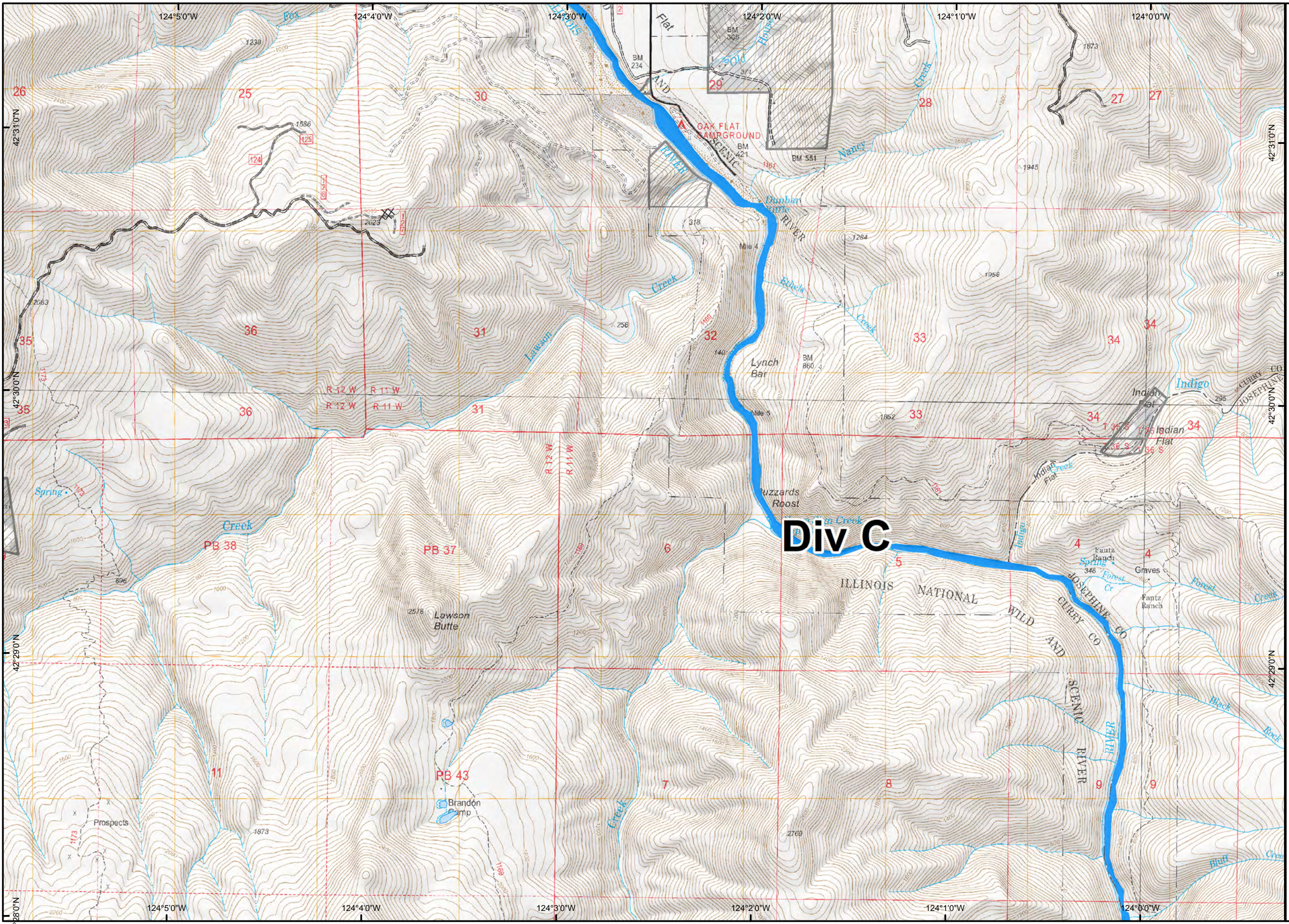
- Legend**
- ( ) Division
  - Ⓒ Camp
  - Drop Point
  - Heispot
  - Ⓡ Lookout
  - WX Mobile Weather Unit
  - Ⓔ Repeater
  - Ⓜ Water Source
  - Ⓟ Pump
  - Other
  - Uncontrolled Fire Edge
  - Completed Dozer Line
  - Completed Line
  - H - H Hand Line
  - R - R Road as Completed Line
  - Closed Road
  - === High Clearance Vehicle
  - Suitable for Passenger Cars
  - Botanical Area Boundary
  - Kalmiopsis Wilderness
  - Windy Valley Meadow Protection
  - Long Term Ecosystem Productivity
  - Private Ownership



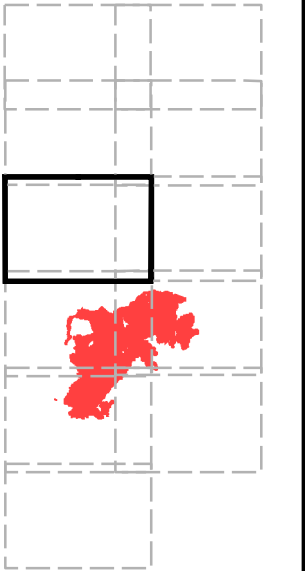




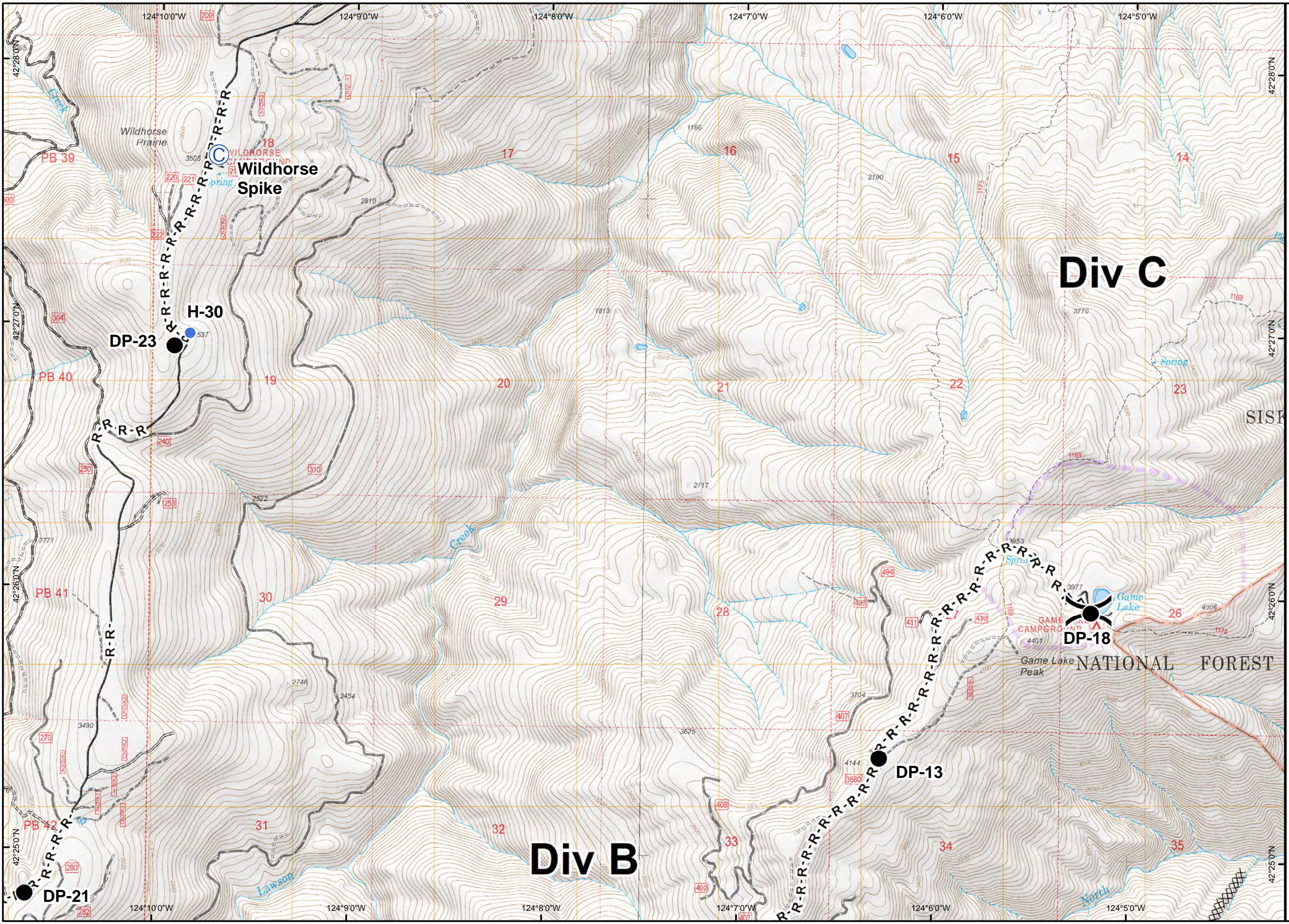
- Legend**
- ( ) Division
  - Ⓒ Camp
  - Drop Point
  - Heispost
  - ⌚ Lookout
  - WX Mobile Weather Unit
  - Ⓔ Repeater
  - ⒲ Water Source
  - Ⓔ Pump
  - Other
  - ┌ Uncontrolled Fire Edge
  - ▣ Completed Dozer Line
  - ▬ Completed Line
  - H · H Hand Line
  - R · R Road as Completed Line
  - Closed Road
  - === High Clearance Vehicle
  - Suitable for Passenger Cars
  - Botanical Area Boundary
  - ▨ Kalmiopsis Wilderness
  - ▨ Windy Valley Meadow Protection
  - ▨ Long Term Ecosystem Productivity
  - ▨ Private Ownership







- Legend**
- ) Division
  - C Camp
  - Drop Point
  - Helispot
  - ⌚ Lookout
  - WX Mobile Weather Unit
  - R Repeater
  - W Water Source
  - P Pump
  - Other
  - ┌ Uncontrolled Fire Edge
  - Completed Dozer Line
  - Completed Line
  - H · H Hand Line
  - R - R Road as Completed Line
  - Closed Road
  - === High Clearance Vehicle
  - Suitable for Passenger Cars
  - Botanical Area Boundary
  - Kalmiopsis Wilderness
  - Windy Valley Meadow Protection
  - Long Term Ecosystem Productivity
  - Private Ownership



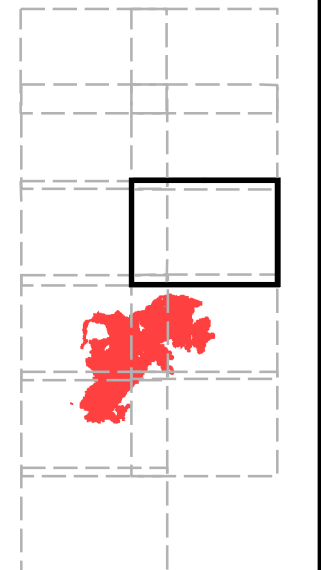
**Div C**

**Div B**

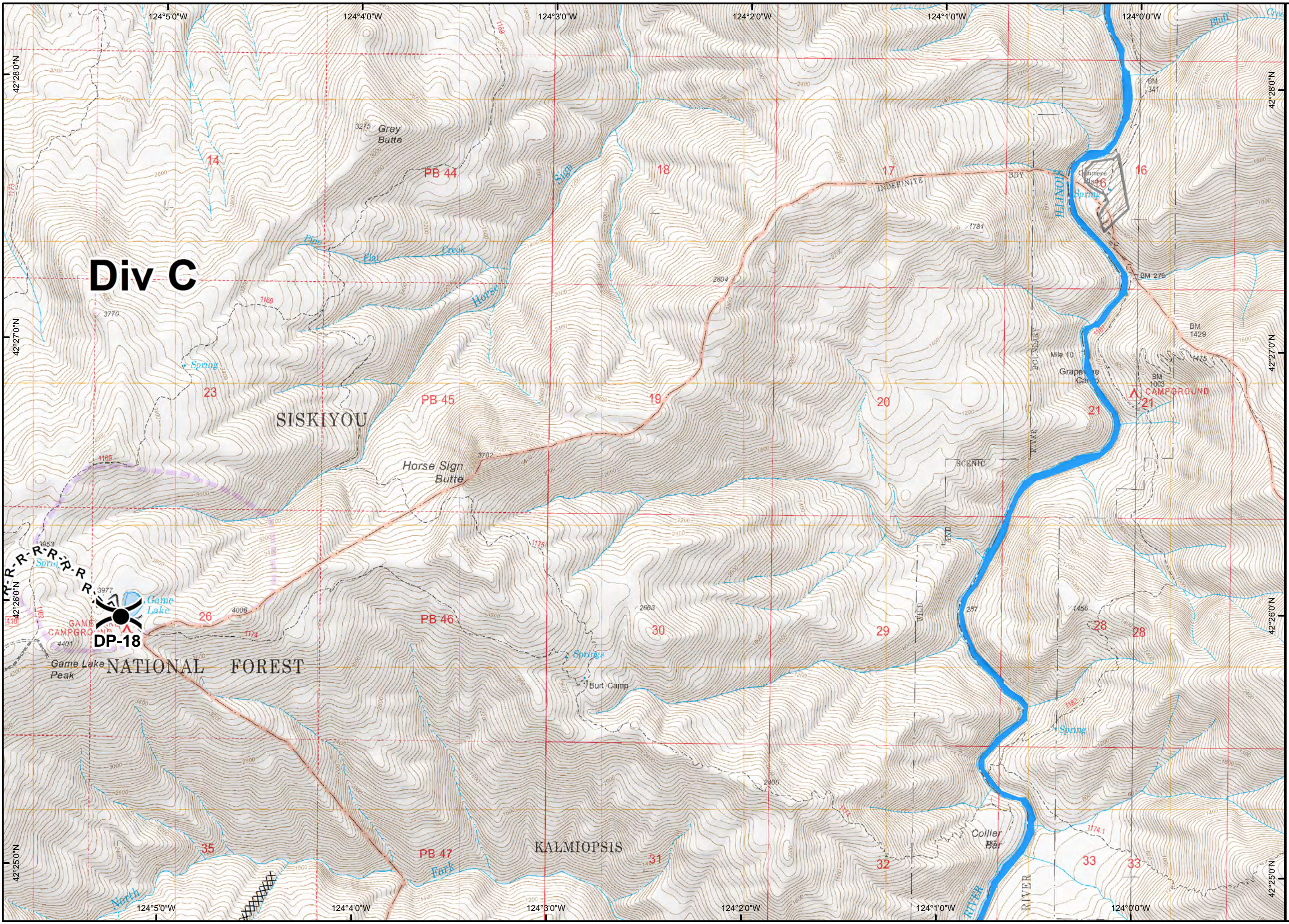


Game Lake NATIONAL FOREST





- Legend**
- ( ) Division
  - (C) Camp
  - Drop Point
  - Helispot
  - ⌚ Lookout
  - WX Mobile Weather Unit
  - (R) Repeater
  - (W) Water Source
  - (P) Pump
  - Other
  - Uncontrolled Fire Edge
  - XXXX Completed Dozer Line
  - Completed Line
  - H · H Hand Line
  - R - R Road as Completed Line
  - - - Closed Road
  - ==== High Clearance Vehicle
  - Suitable for Passenger Cars
  - Botanical Area Boundary
  - Kalmiopsis Wilderness
  - Windy Valley Meadow Protection
  - Long Term Ecosystem Productivity
  - Private Ownership



**Div C**

SISKIYOU

KALMIOPSIS

**DP-18**  
GAME LAKE  
NATIONAL FOREST

PB 44

PB 45

PB 46

PB 47

18

19

30

31

17

20

29

32

16

21

28

33

23

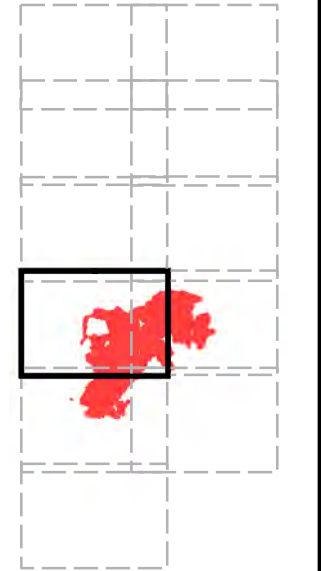
26

35

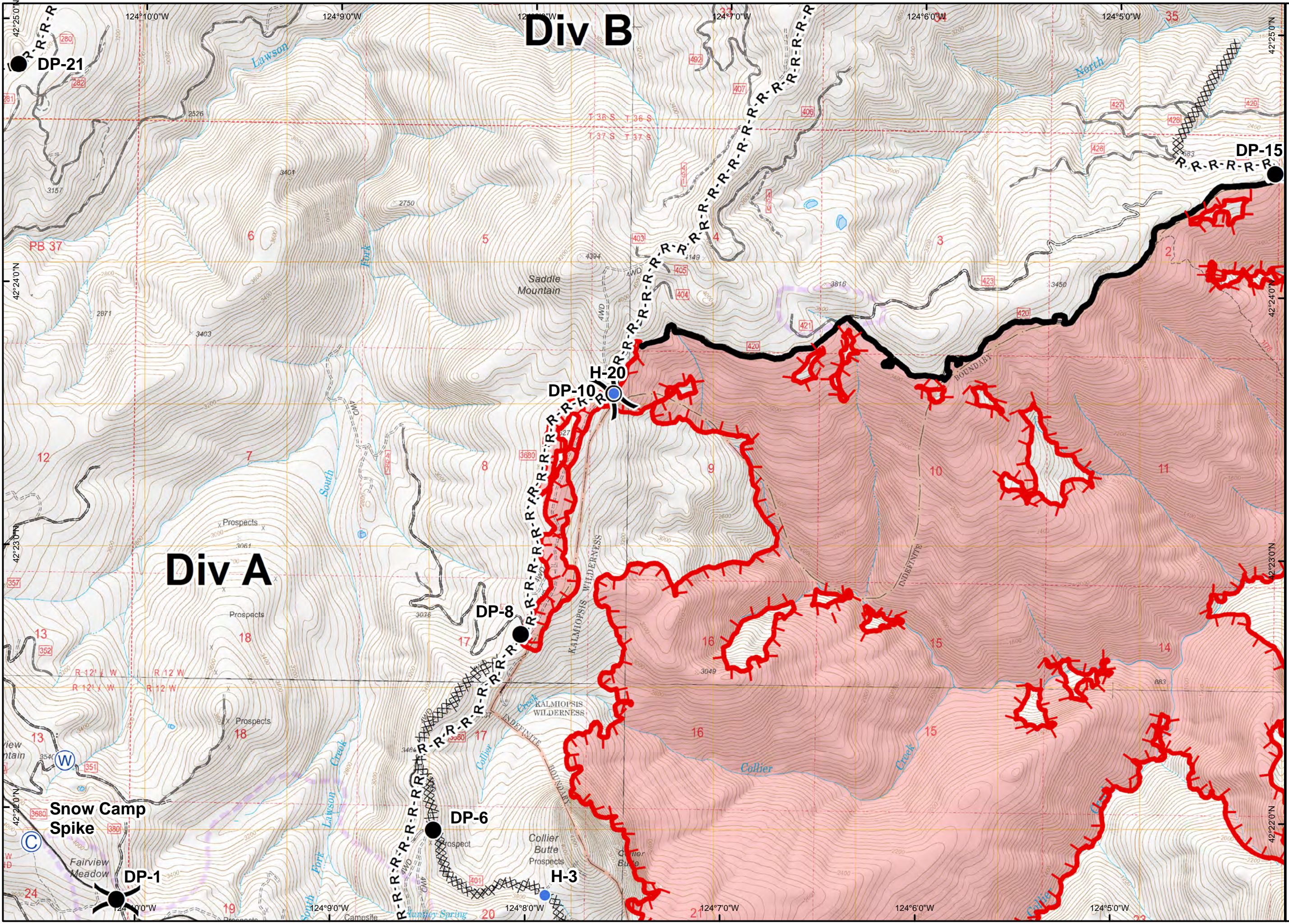
28

33

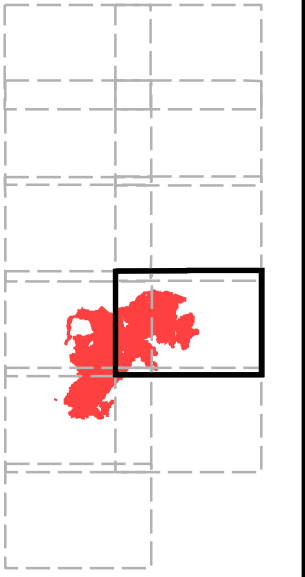




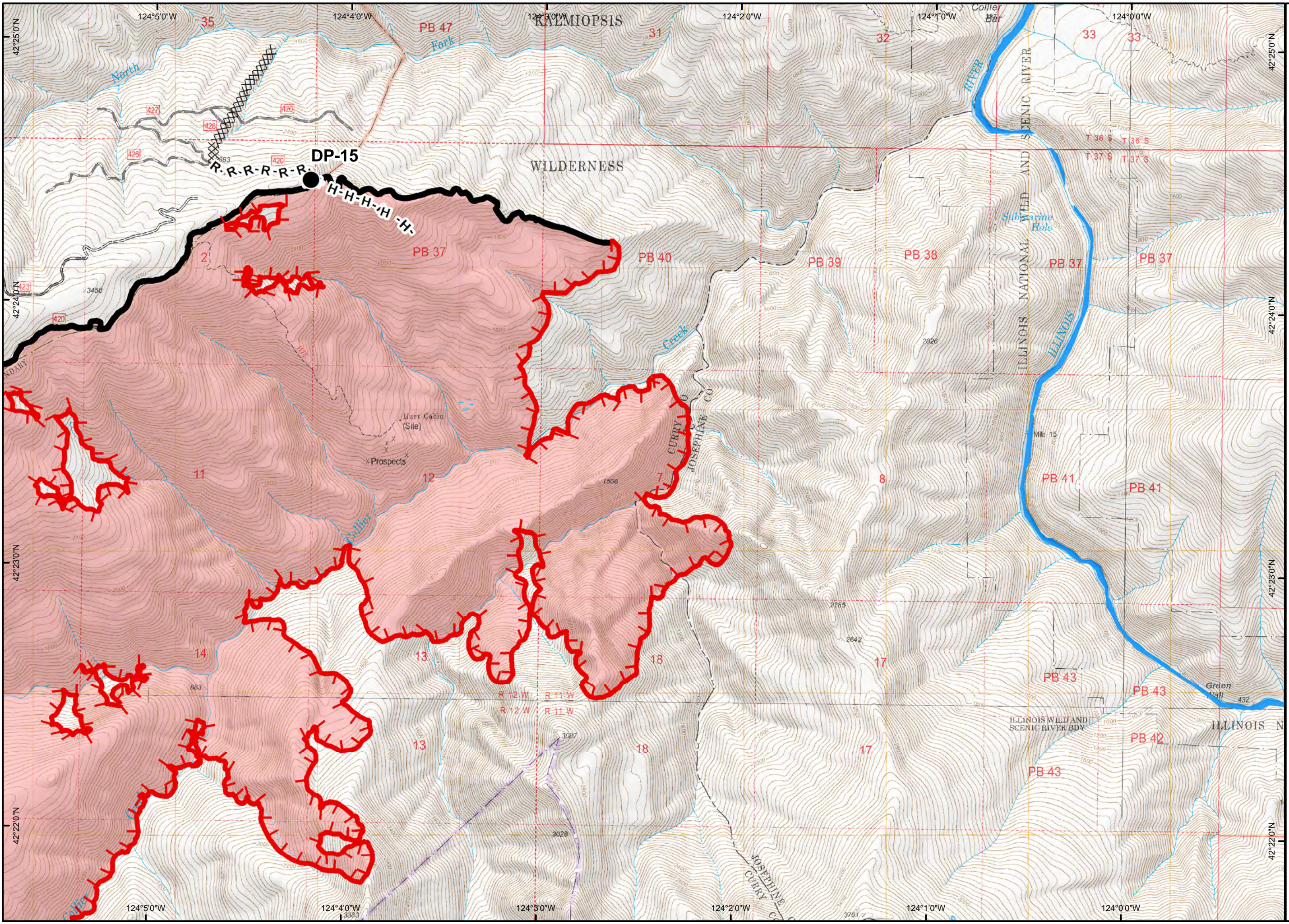
- Legend**
- ) Division
  - C Camp
  - Drop Point
  - Heispot
  - ⌚ Lookout
  - WX Mobile Weather Unit
  - R Repeater
  - W Water Source
  - P Pump
  - Other
  - └─┘ Uncontrolled Fire Edge
  - Completed Dozer Line
  - Completed Line
  - H · H Hand Line
  - R · R Road as Completed Line
  - Closed Road
  - High Clearance Vehicle
  - Suitable for Passenger Cars
  - Botanical Area Boundary
  - Kalmiopsis Wilderness
  - Windy Valley Meadow Protection
  - Long Term Ecosystem Productivity
  - Private Ownership



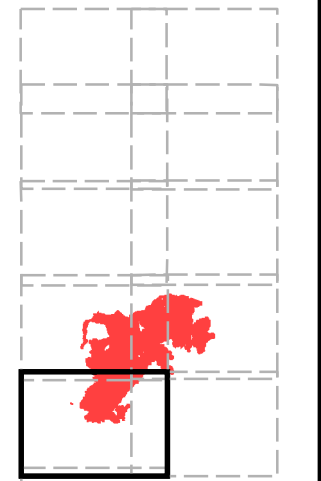




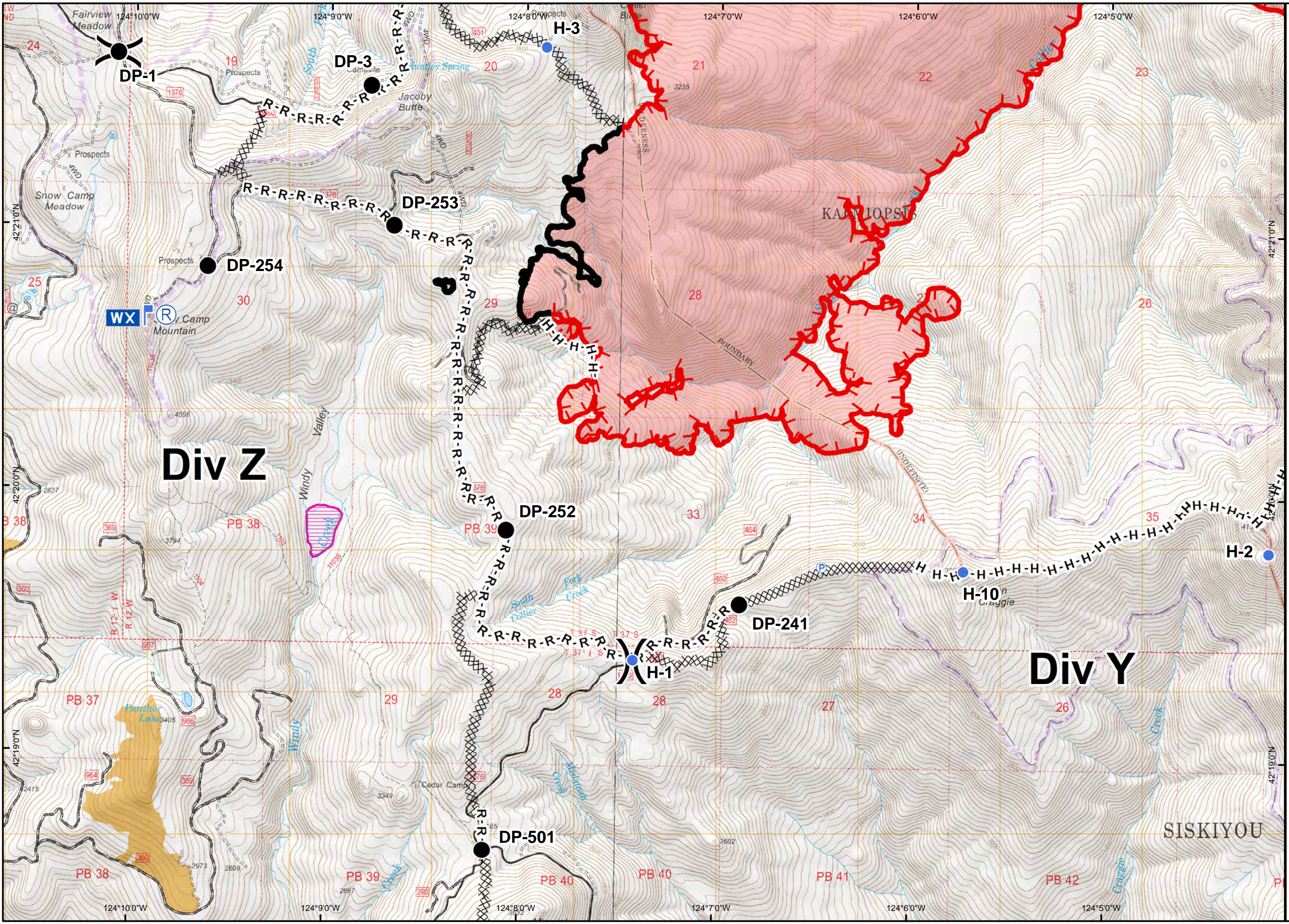
- Legend**
- Division
  - Camp
  - Drop Point
  - Helispot
  - Lookout
  - Mobile Weather Unit
  - Repeater
  - Water Source
  - Pump
  - Other
  - Uncontrolled Fire Edge
  - Completed Dozer Line
  - Completed Line
  - Hand Line
  - Road as Completed Line
  - Closed Road
  - High Clearance Vehicle
  - Suitable for Passenger Cars
  - Botanical Area Boundary
  - Kalmiopsis Wilderness
  - Windy Valley Meadow Protection
  - Long Term Ecosystem Productivity
  - Private Ownership



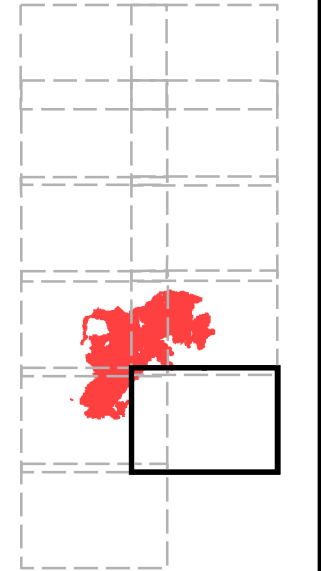




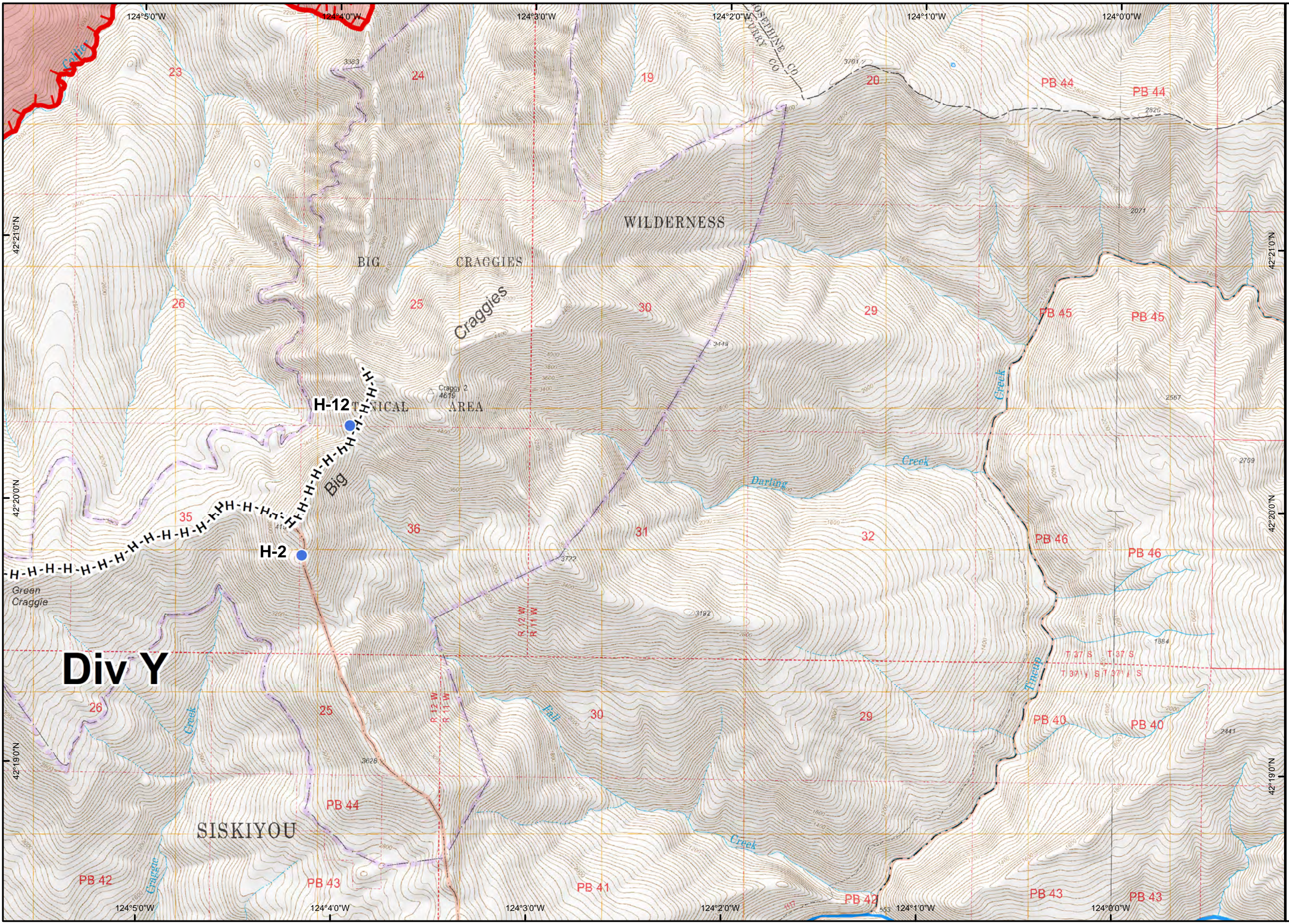
- Legend**
- ( ) Division
  - (C) Camp
  - Drop Point
  - Heispot
  - ⌚ Lookout
  - WX Mobile Weather Unit
  - (R) Repeater
  - (W) Water Source
  - (P) Pump
  - Other
  - ┌ Uncontrolled Fire Edge
  - ⊗ Completed Dozer Line
  - ▬ Completed Line
  - H · H Hand Line
  - R · R Road as Completed Line
  - Closed Road
  - === High Clearance Vehicle
  - Suitable for Passenger Cars
  - Botanical Area Boundary
  - Kalmiopsis Wilderness
  - Windy Valley Meadow Protection
  - Long Term Ecosystem Productivity
  - Private Ownership



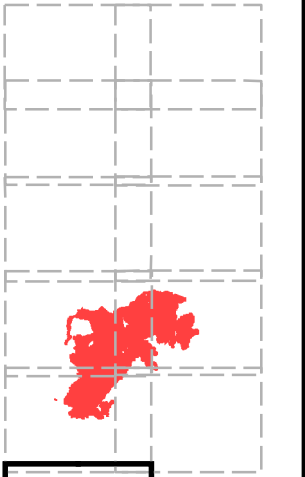




- Legend**
- ( ) Division
  - Ⓒ Camp
  - Drop Point
  - Heispot
  - ⌚ Lookout
  - WX Mobile Weather Unit
  - Ⓔ Repeater
  - ⒲ Water Source
  - Ⓟ Pump
  - Other
  - Uncontrolled Fire Edge
  - Completed Dozer Line
  - Completed Line
  - H · H Hand Line
  - R · R Road as Completed Line
  - Closed Road
  - === High Clearance Vehicle
  - Suitable for Passenger Cars
  - Botanical Area Boundary
  - Kalmiopsis Wilderness
  - Windy Valley Meadow Protection
  - Long Term Ecosystem Productivity
  - Private Ownership







- Legend**
- ( ) Division
  - (C) Camp
  - Drop Point
  - Helispot
  - ⌚ Lookout
  - WX Mobile Weather Unit
  - (R) Repeater
  - (W) Water Source
  - (P) Pump
  - Other
  - ┌ Uncontrolled Fire Edge
  - XXXX Completed Dozer Line
  - ▬ Completed Line
  - H · H Hand Line
  - R · R Road as Completed Line
  - Closed Road
  - === High Clearance Vehicle Suitable for Passenger Cars
  - Botanical Area Boundary
  - Kalmiopsis Wilderness
  - Windy Valley Meadow Protection
  - Long Term Ecosystem Productivity
  - Private Ownership

