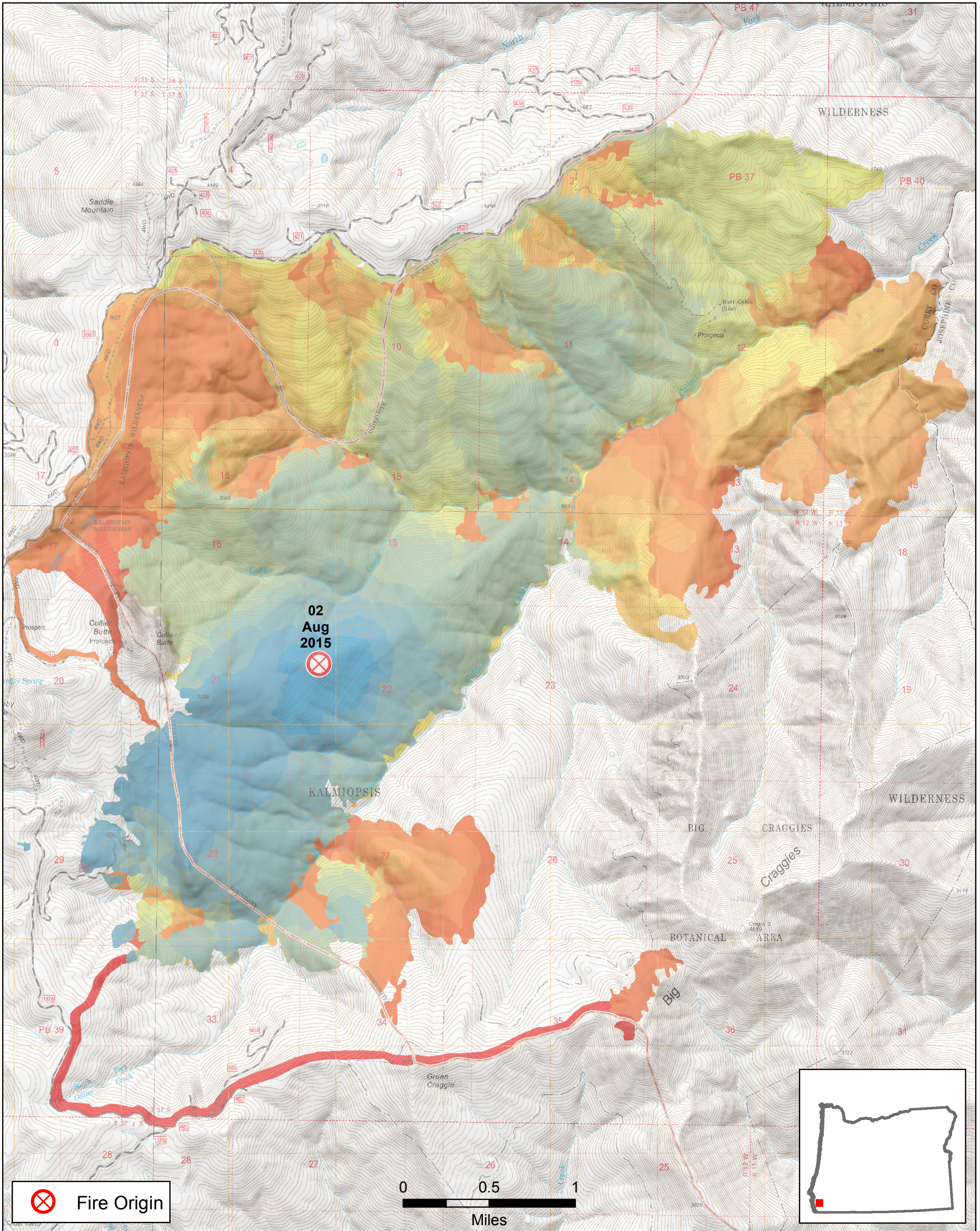


Fire Progression

Approx 9,313 ac.
08/23/2015 2200 hrs.

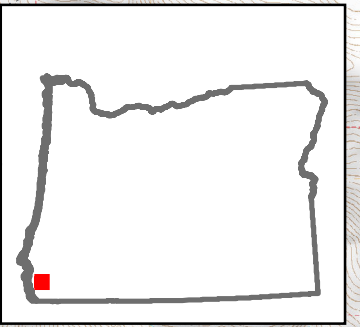


02
Aug
2015



Fire Origin

0 0.5 1
Miles



	Date	Daily Ac.	Total Ac.
	8/6/2015	158	158
	8/7/2015	619	777
	8/8/2015	603	1380
	8/9/2015	383	1763
	8/10/2015	1024	2787
	8/11/2015	1143	3930
	8/12/2015	433	4363
	8/13/2015	800	5163

	Date	Daily Ac.	Total Ac.
	8/14/2015	158	5321
	8/15/2015	277	5598
	8/16/2015	259	5857
	8/17/2015	656	6513
	8/18/2015	863	7376
	8/19/2015	537	7913
	8/20/2015	833	8746
	8/21/2015	341	*9087

	Date	Daily Ac.	Total Ac.
	8/22/2015	69	*9156
	8/23/2015	157	*9313

* No IR flights 8/21-8/23.
Best available information was used to estimate fire growth.