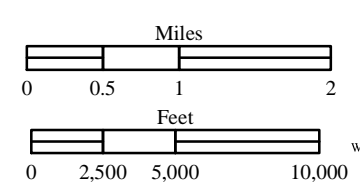
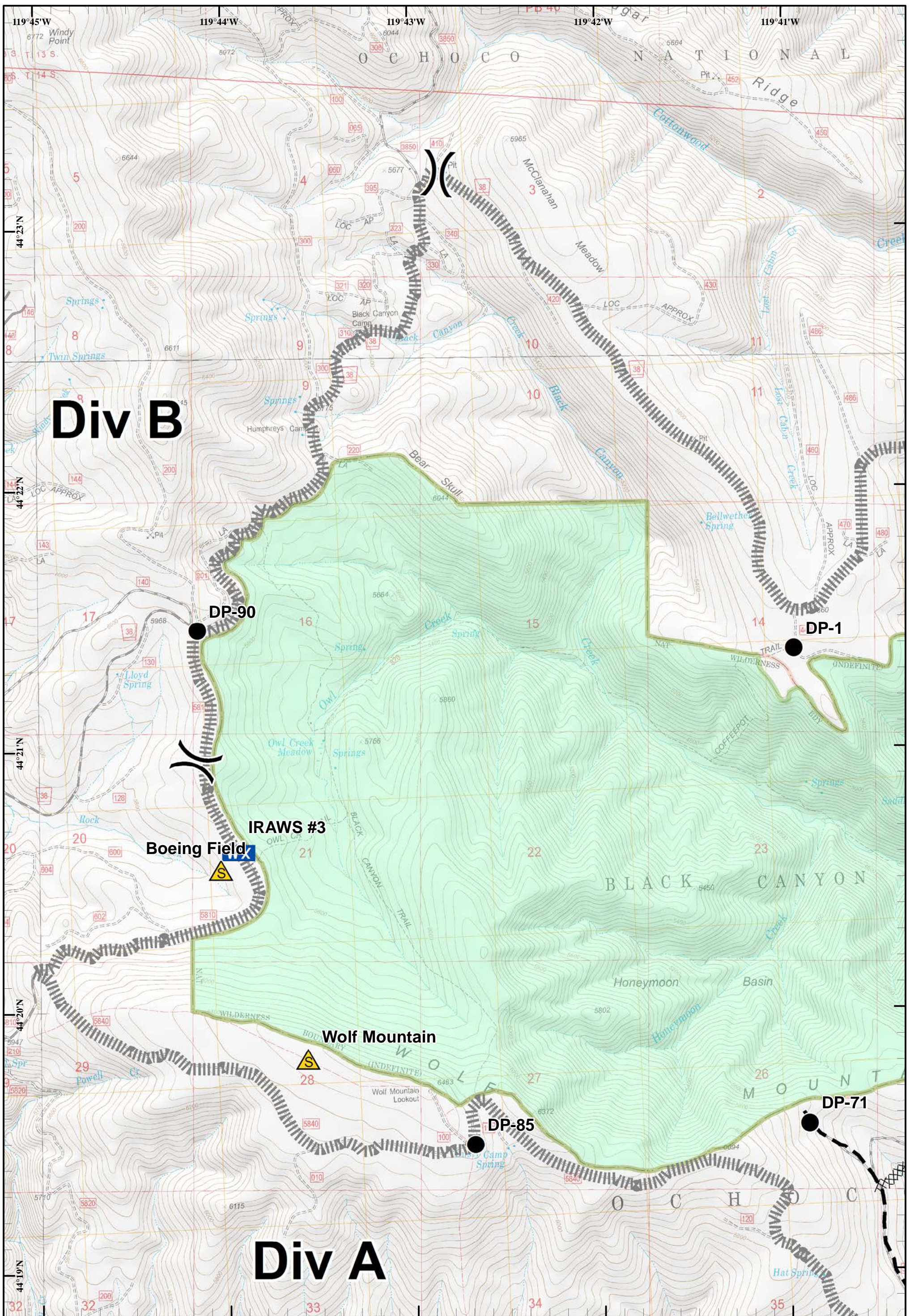


Corner Creek Fire
 OR-OCF-000297
 IAP Map
 NAD 83
 Approx 28,743 ac
 As of 7/7/2015 @ 2158

 Division
  Branch



Index
 July 9, 2015
 Day Shift
 Wednesday, July 08, 2015 @ 2350 hrs



Corner Creek Fire
 OR-OCF-000297
 IAP Map
 NAD 83
 Approx 28,743 ac
 As of 7/7/2015 @ 2158

- Division
- Mobile Weather Unit
- Safety Zone
- Drop Point
- Completed Dozer Line
- Planned Fire Line
- C-Contingency
- USFS

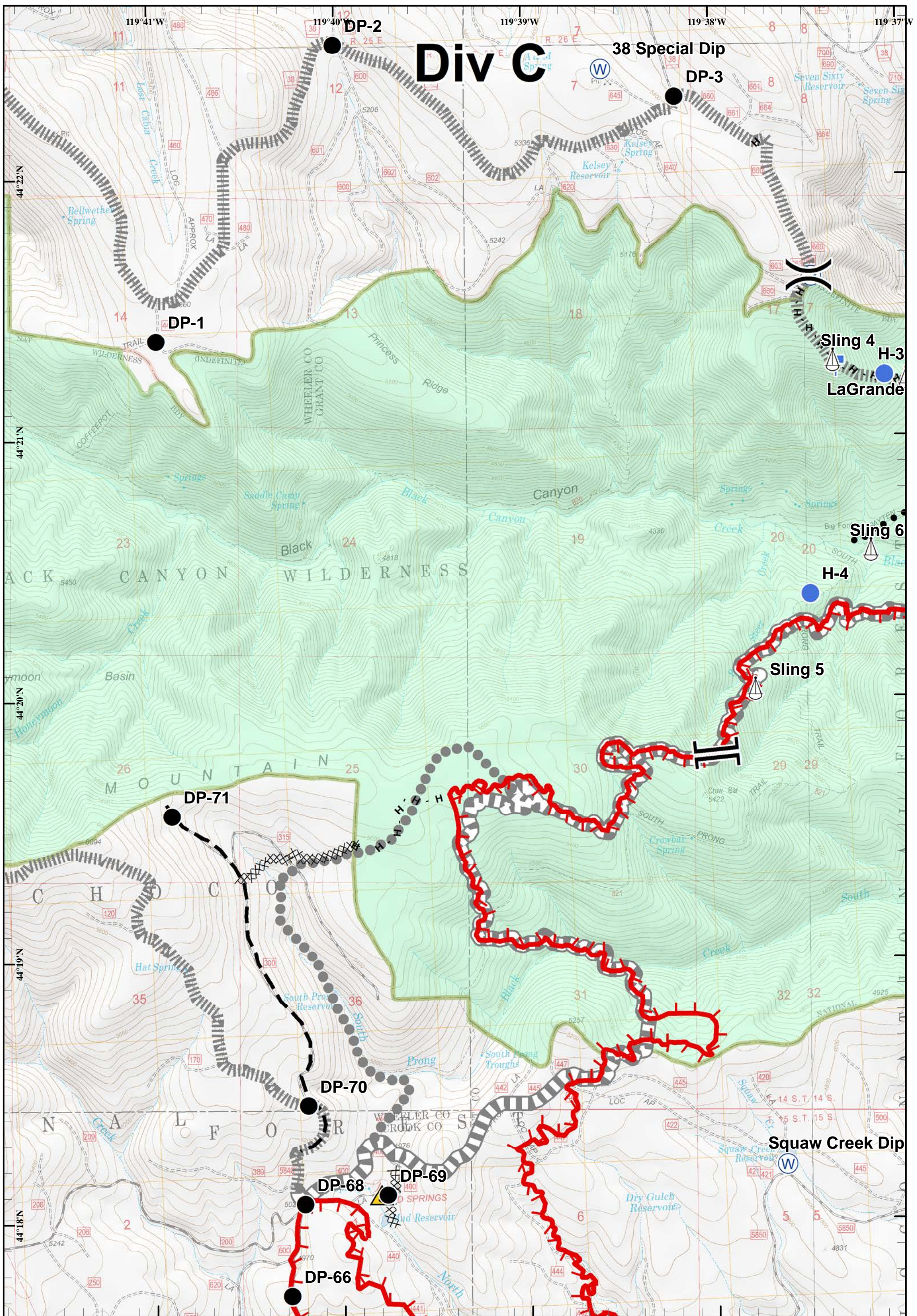
Page 1 of 10

July 9, 2015
Day Shift

Wednesday, July 08, 2015 @2340 hrs

Miles

Feet



Div C

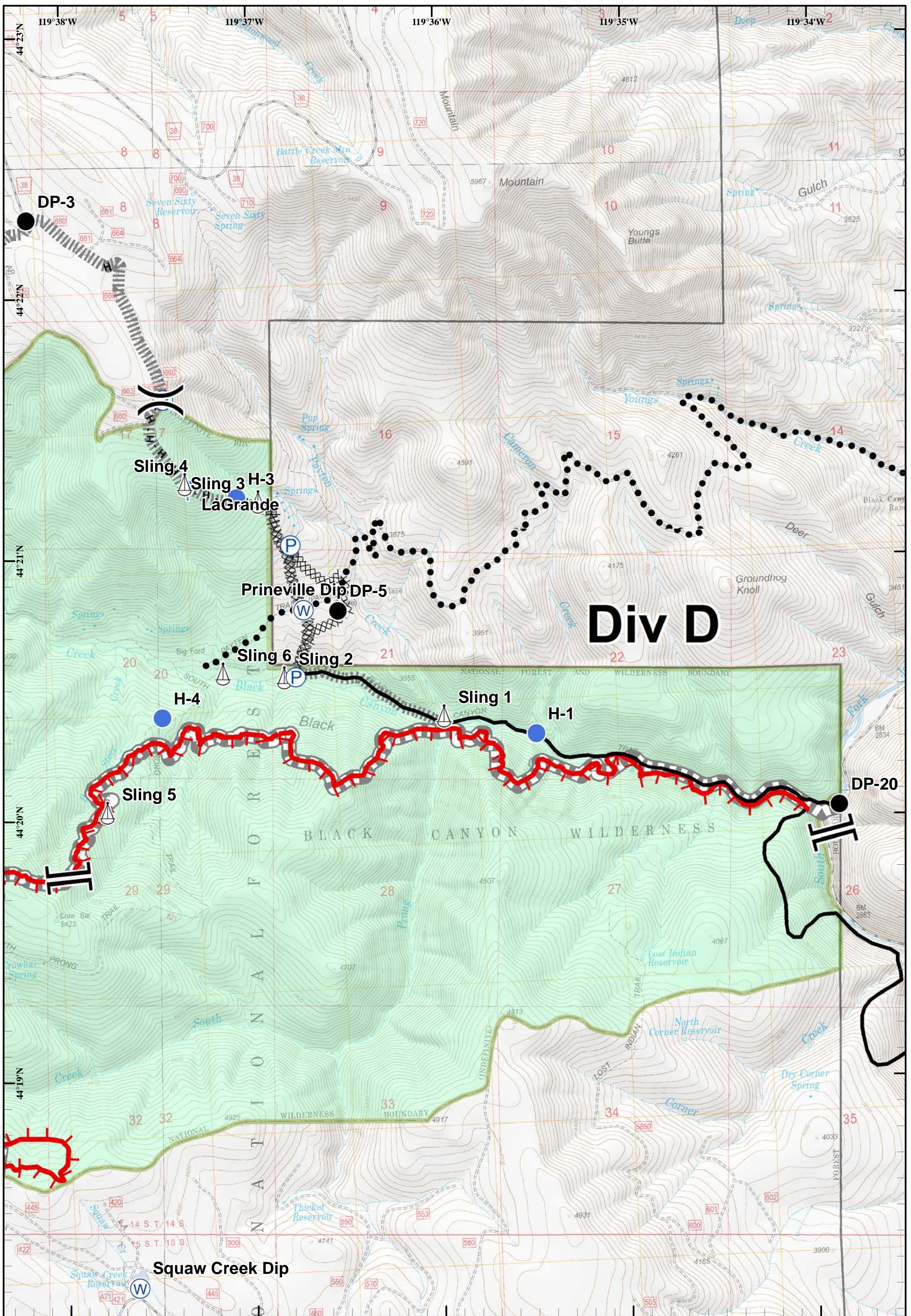
Corner Creek Fire
 OR-OCF-000297
 IAP Map
 NAD 83
 Approx 28,743 ac
 As of 7/7/2015 @ 2158

- Division
- Branch
- Helispot
- Safety Zone
- Uncontrolled Fire Edge
- Lookout
- Sling Site
- Completed Dozer Line
- Pump
- Hand Line
- Planned Fire Line
- Water Source
- Planned Secondary Line

Miles
 0 0.175 0.35 0.7

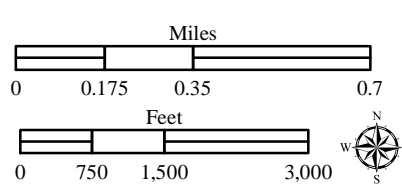
Feet
 0 750 1,500 3,000

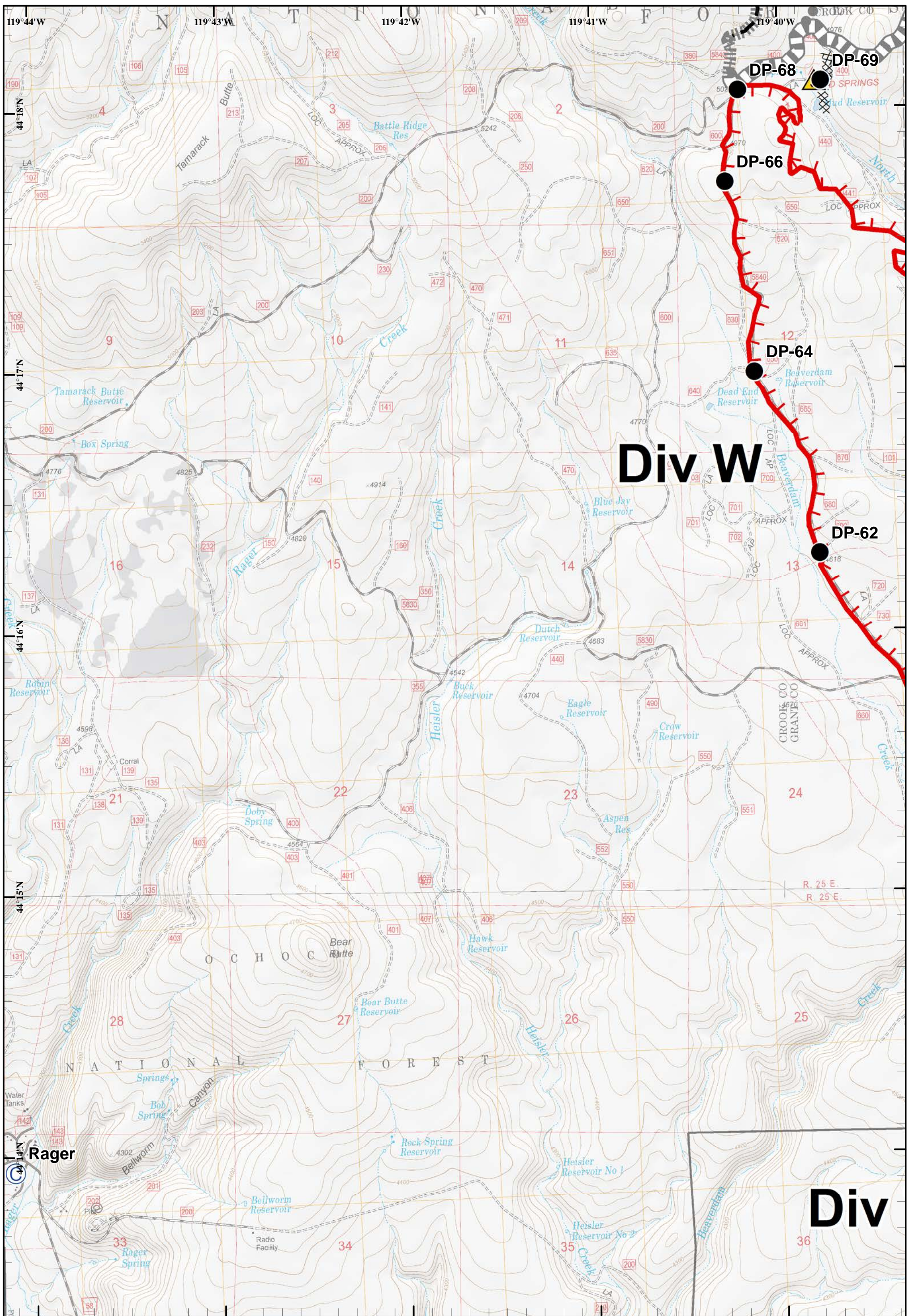
Page 2 of 10
 July 9, 2015
 Day Shift
 Wednesday, July 08, 2015 @ 2340 hrs



Corner Creek Fire
 OR-OCF-000297
 IAP Map
 NAD 83
 Approx 28,743 ac
 As of 7/7/2015 @ 2158

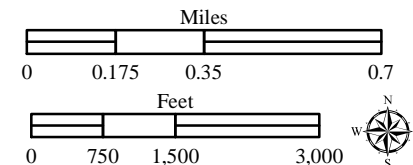
- | | | | | | | | | | |
|--|----------------------|--|----------------|--|--------------|--|------------------------|--|---------------|
| | Division | | Branch | | Lookout | | Uncontrolled Fire Edge | | P-Primary |
| | Completed Dozer Line | | Completed Line | | Pump | | H - H Hand Line | | C-Contingency |
| | Drop Point | | Sling Site | | Water Source | | Planned Secondary Line | | USFS |
| | Helispot | | | | | | | | |



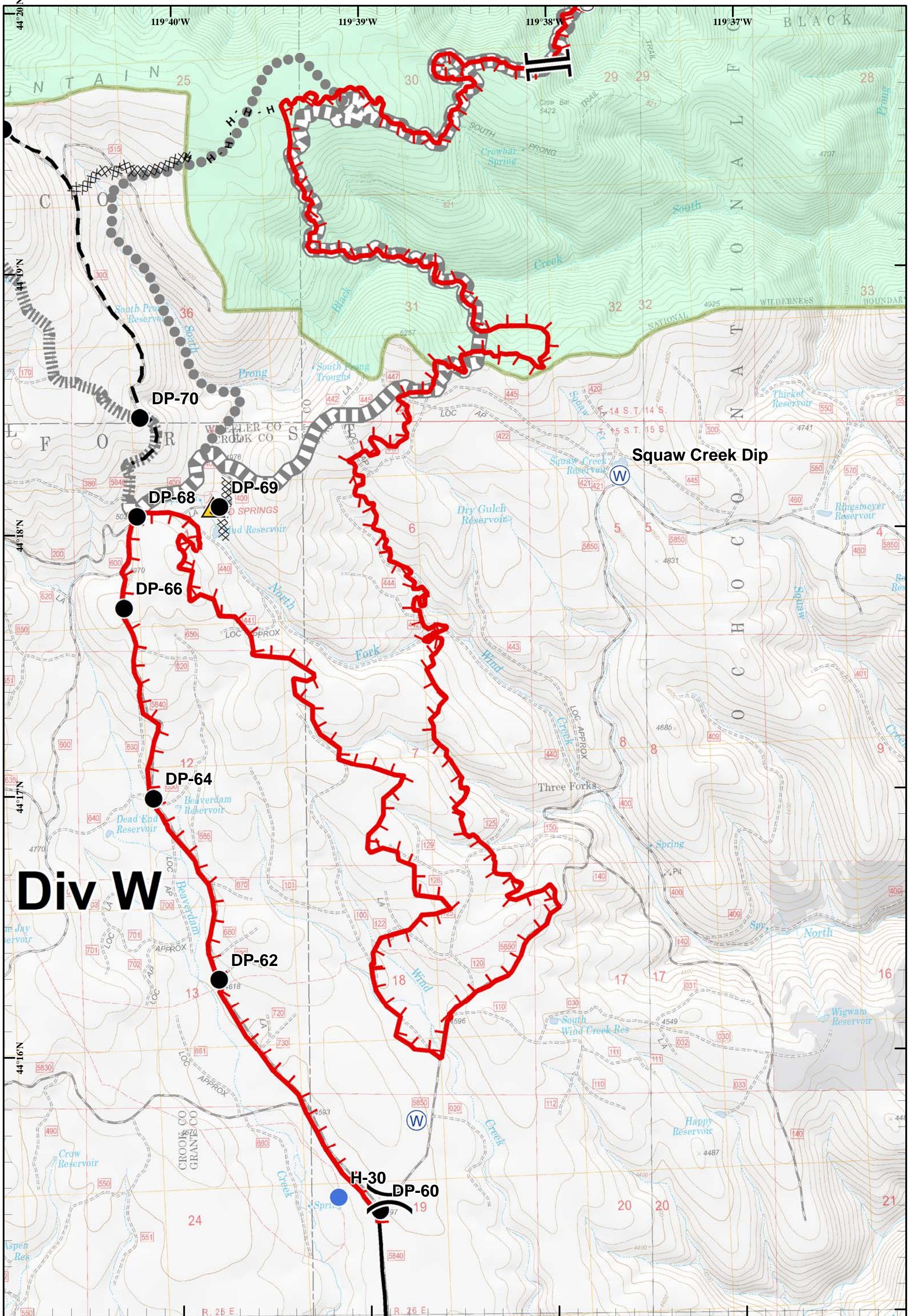


Corner Creek Fire
 OR-OCF-000297
 IAP Map
 NAD 83
 Approx 28,743 ac
 As of 7/7/2015 @ 2158

- Camp
- Drop Point
- Safety Zone
- Uncontrolled Fire Edge
- Completed Dozer Line
- Planned Fire Line
- P-Primary
- A-Alternate
- C-Contingency

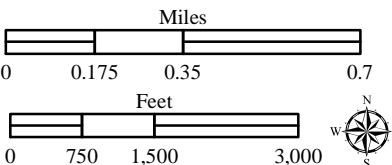


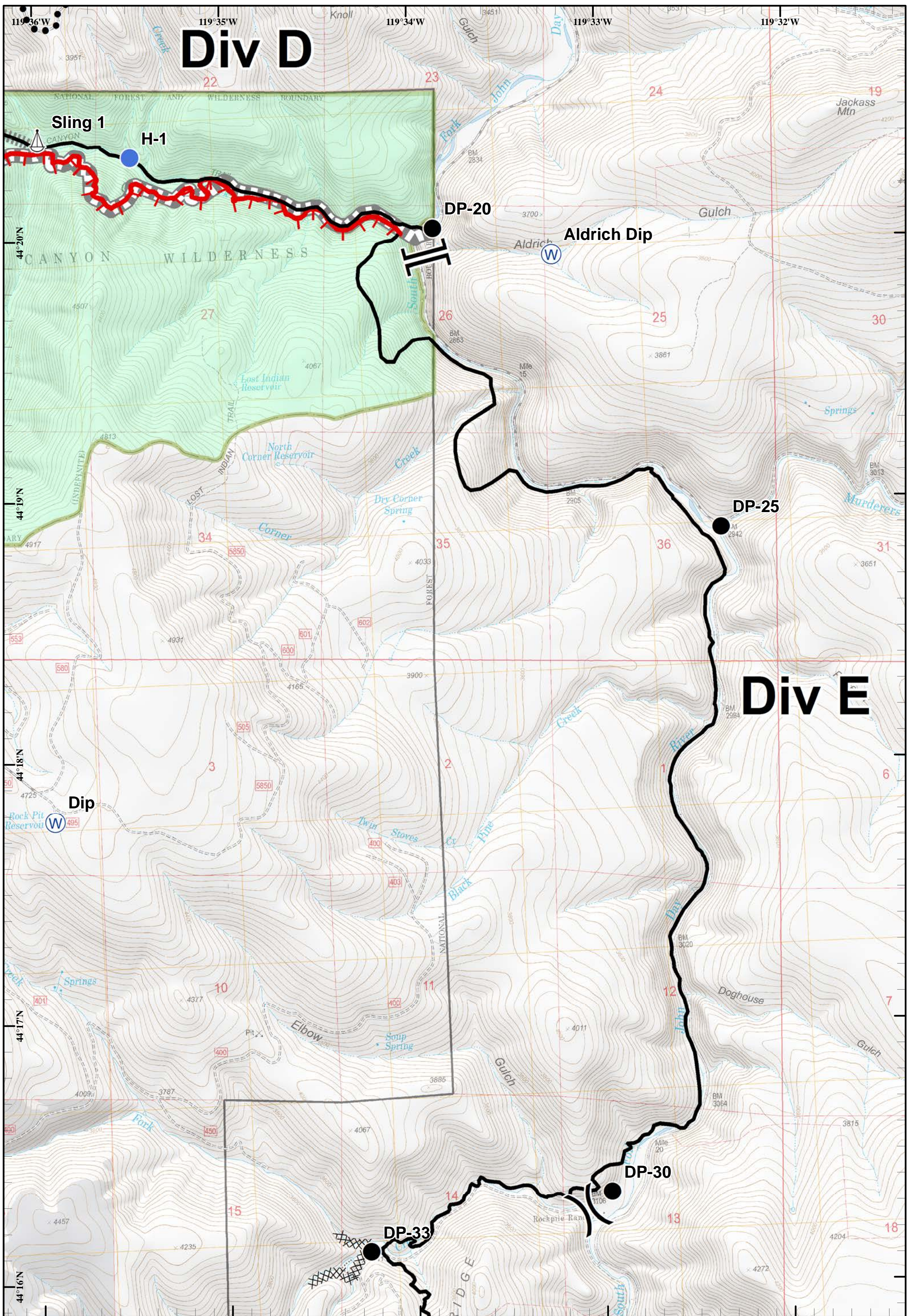
Page 4 of 10
 July 9, 2015
 Day Shift
 Wednesday, July 08, 2015 @ 2341 hrs



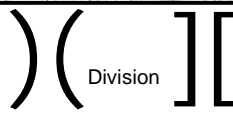
Corner Creek Fire
 OR-OCF-000297
 IAP Map
 NAD 83
 Approx 28,743 ac
 As of 7/7/2015 @ 2158

- | | | | | | | | | | |
|--|----------------|--|------------------------|--|--------------|--|----------------------|--|---------------|
| | Division | | Branch | | Safety Zone | | Completed Dozer Line | | A-Alternate |
| | Completed Line | | Sling Site | | Water Source | | Planned Fire Line | | C-Contingency |
| | Drop Point | | Uncontrolled Fire Edge | | P-Primary | | USFS | | |
| | Helispot | | | | | | | | |



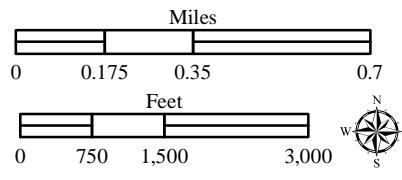


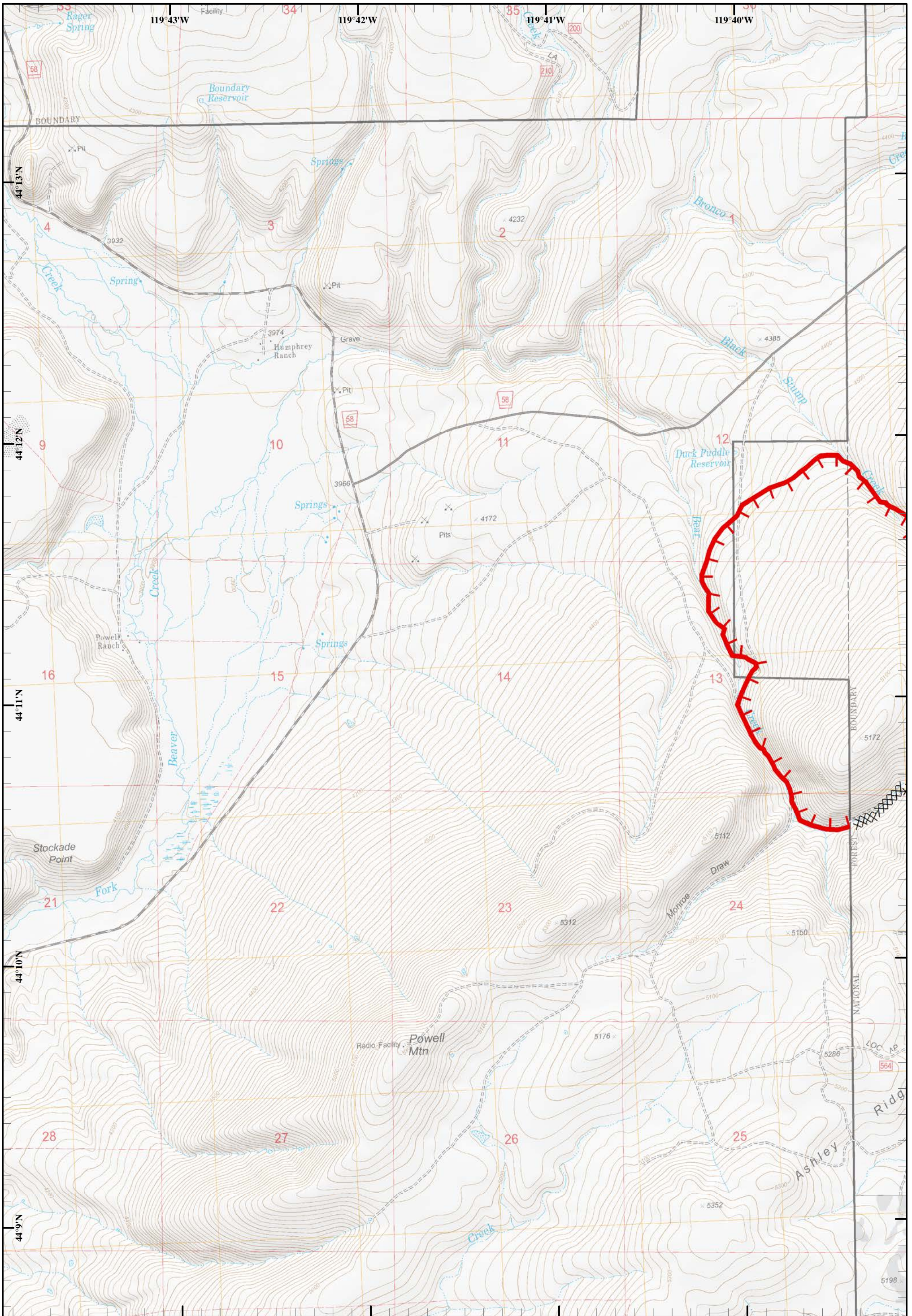
Corner Creek Fire
 OR-OCF-000297
 IAP Map
 NAD 83
 Approx 28,743 ac
 As of 7/7/2015 @ 2158





- Sling Site
- Water Source
- Drop Point
- Helispot
- Uncontrolled Fire Edge
- Completed Dozer Line

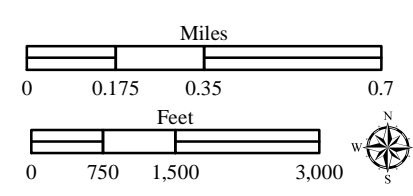
- Completed Line
- Planned Secondary Line
- P-Primary
- C-Contingency
- USFS





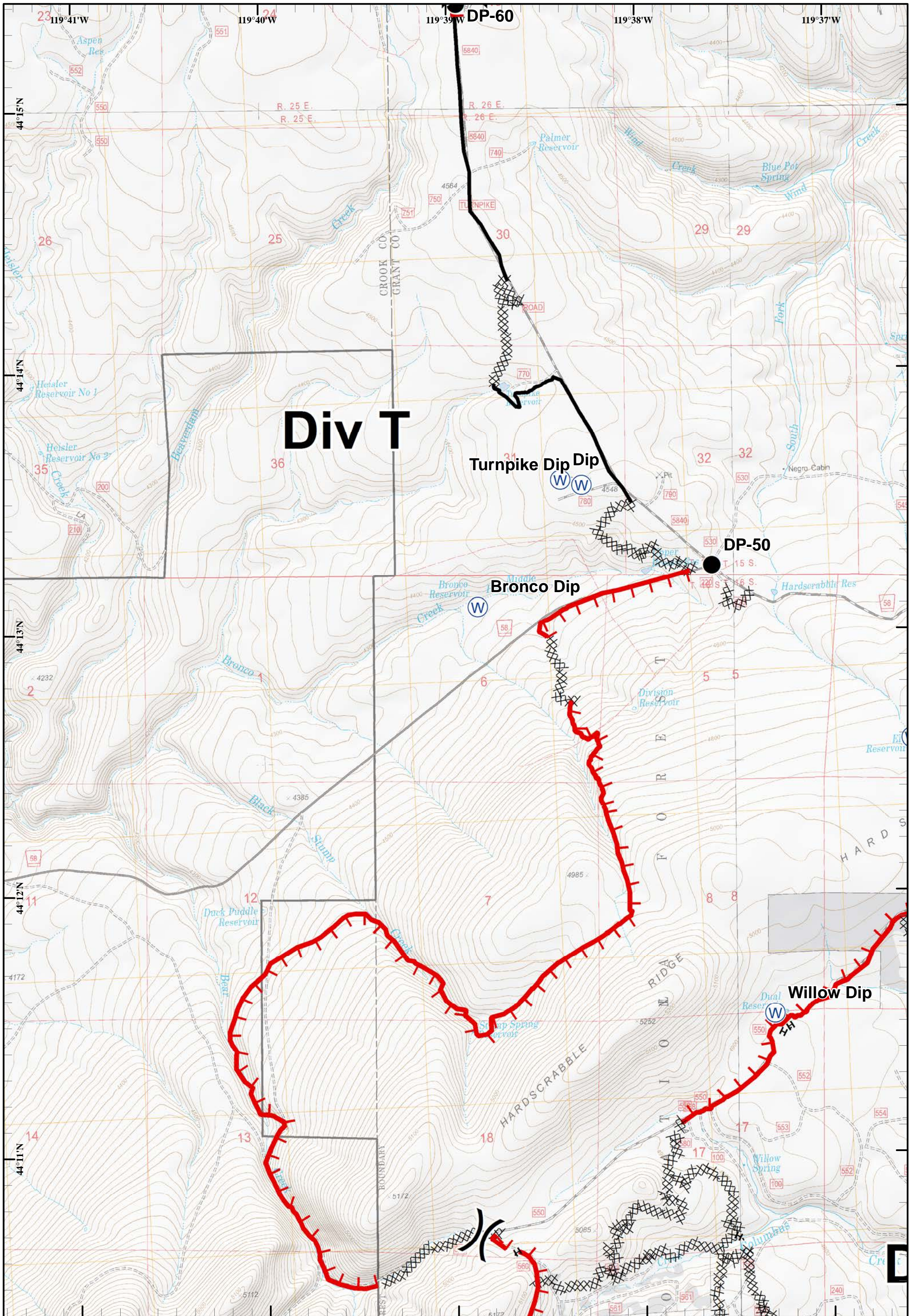
Corner Creek Fire
 OR-OCF-000297
 IAP Map
 NAD 83
 Approx 28,743 ac
 As of 7/7/2015 @ 2158

 Uncontrolled Fire Edge
 Completed Dozer Line



Page 7 of 10
 July 9, 2015
 Day Shift

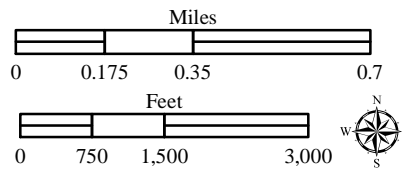
Wednesday, July 08, 2015 @ 2341 hrs

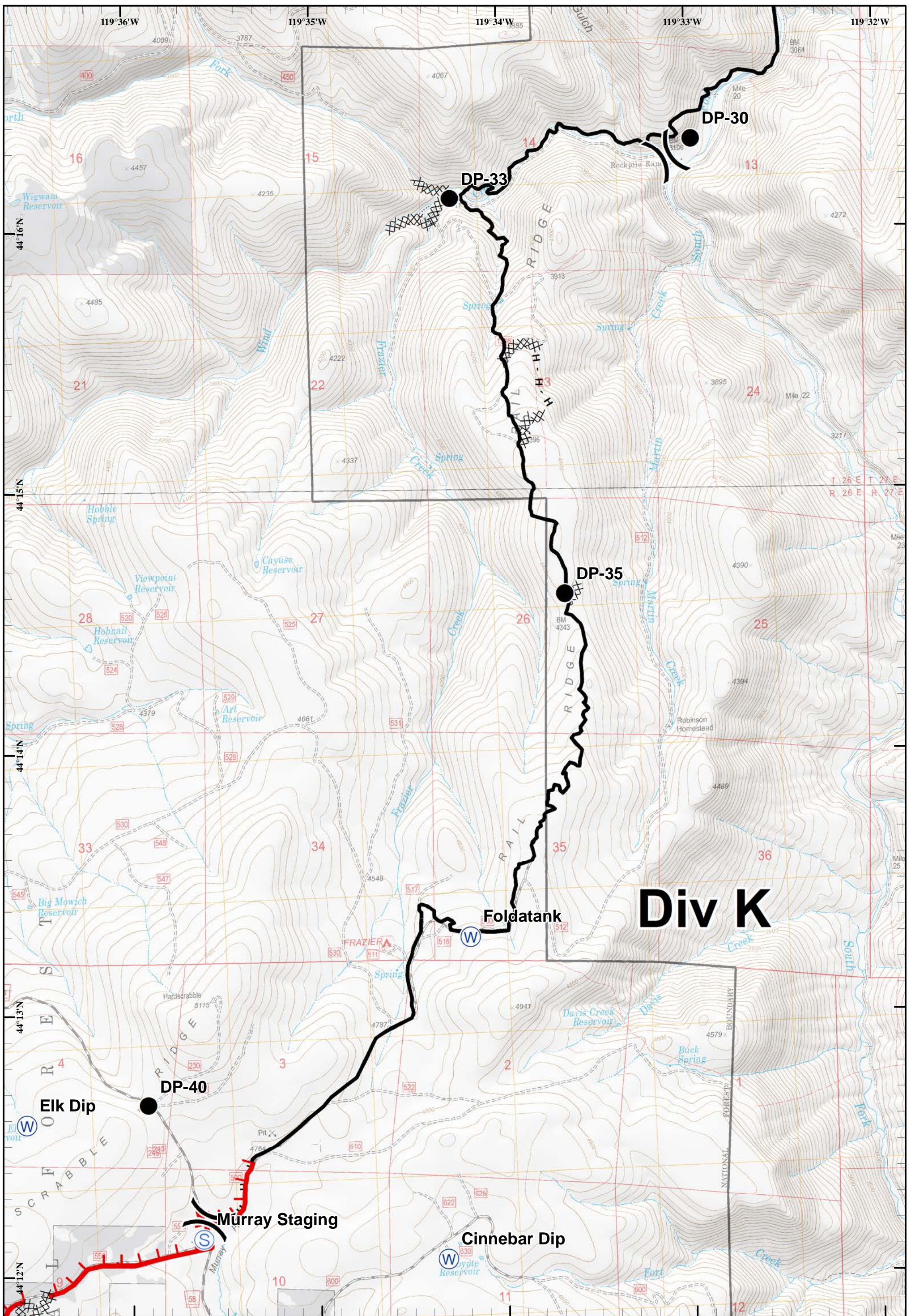


Corner Creek Fire
 OR-OCF-000297
 IAP Map
 NAD 83
 Approx 28,743 ac
 As of 7/7/2015 @ 2158

- Division
- Water Source
- Uncontrolled Fire Edge
- Completed Dozer Line
- Drop Point
- Completed Line

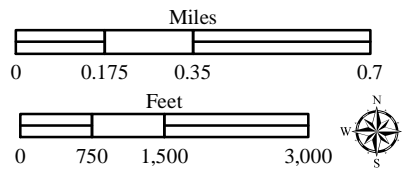
H - H Hand Line





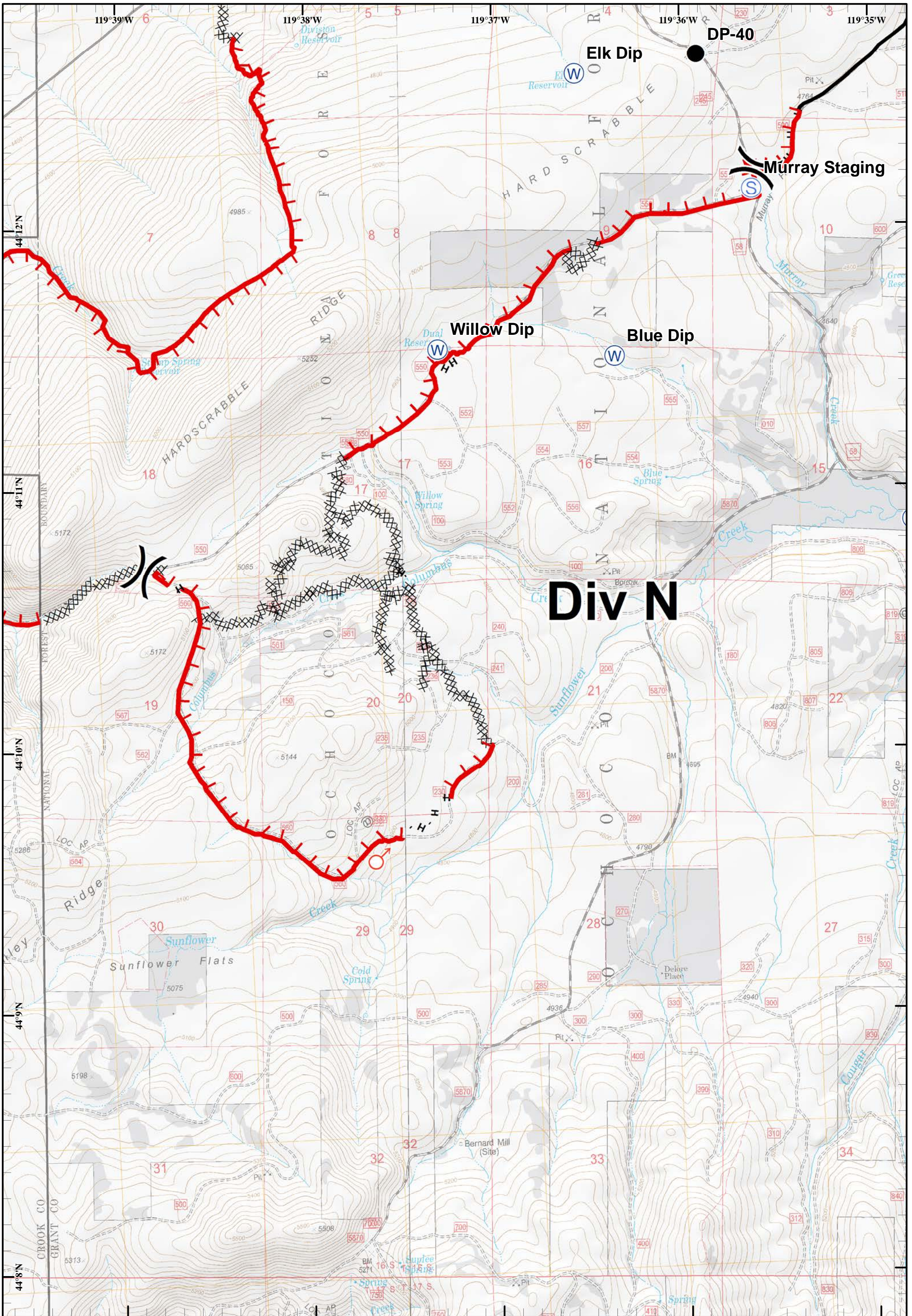
Corner Creek Fire
 OR-OCF-000297
 IAP Map
 NAD 83
 Approx 28,743 ac
 As of 7/7/2015 @ 2158

- Division
- Staging Area
- Water Source
- Uncontrolled Fire Edge
- Drop Point
- Completed Dozer Line
- Completed Line
- H · H Hand Line



Page 9 of 10
 July 9, 2015
 Day Shift

Wednesday, July 08, 2015 @ 2342 hrs



Corner Creek Fire
 OR-OCF-000297
 IAP Map
 NAD 83
 Approx 28,743 ac
 As of 7/7/2015 @ 2158

- Division
- Spot Fire
- Staging Area
- Water Source
- Drop Point
- Uncontrolled Fire Edge
- Completed Dozer Line
- Completed Line
- Hand Line

