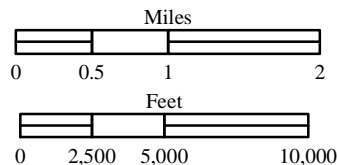


Corner Creek Fire
 OR-OCF-000297
 IAP Map
 NAD 83
 Approx 29,423 ac
 As of 7/8/2015 @ 2127

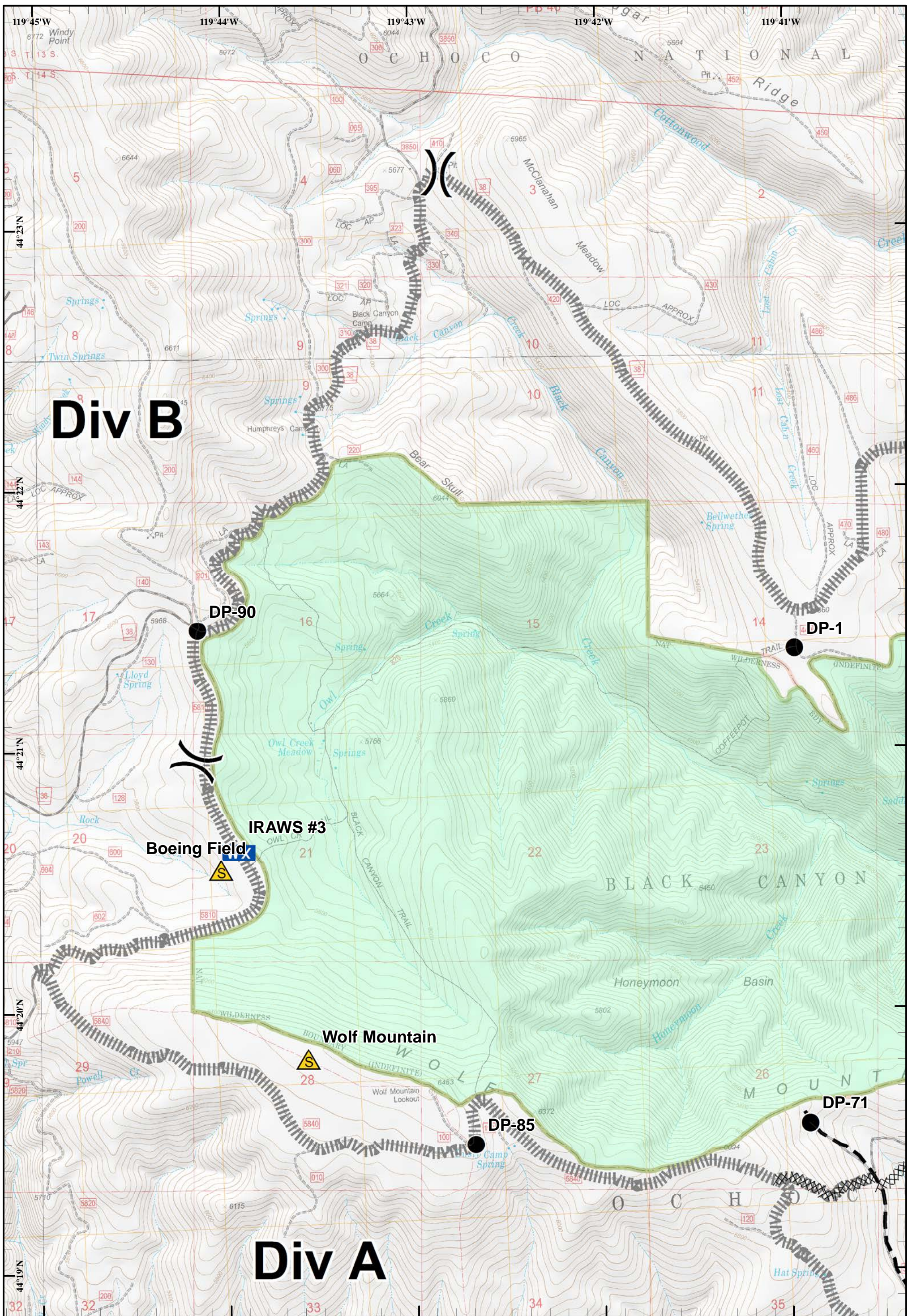
 Division
  Branch

 USFS



Index
 July 10, 2015
 Night Shift

Thursday, July 09, 2015 @2321 hrs



Corner Creek Fire
 OR-OCF-000297
 IAP Map
 NAD 83
 Approx 29,423 ac
 As of 7/8/2015 @ 2127

- Division
- Mobile Weather Unit
- Safety Zone
- Completed Dozer Line
- Planned Fire Line
- C-Contingency
- USFS

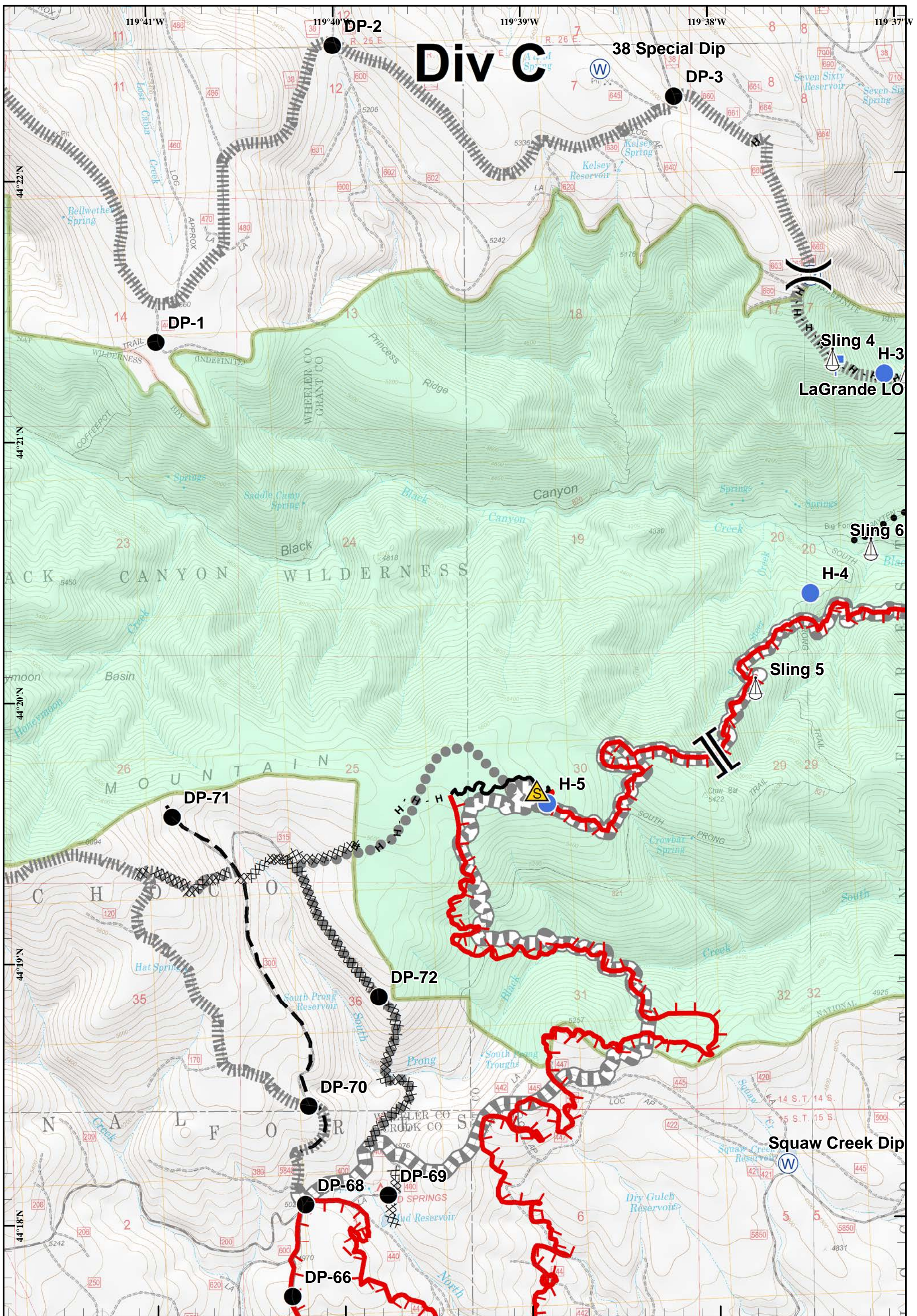
Page 1 of 10

July 10, 2015
 Night Shift

Thursday, July 09, 2015 @ 2319 hrs

Miles: 0, 0.175, 0.35, 0.7

Feet: 0, 750, 1,500, 3,000



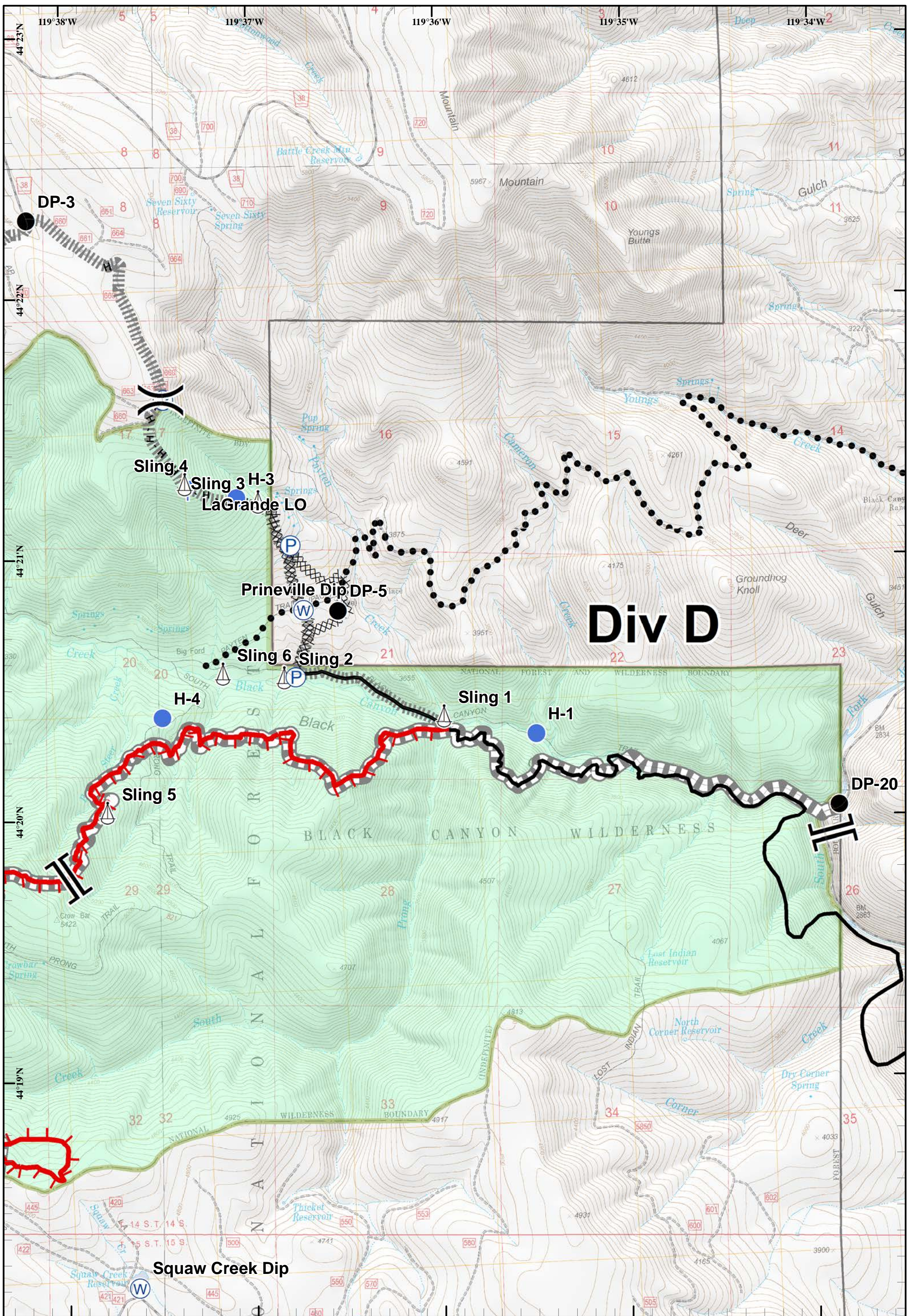
Corner Creek Fire
 OR-OCF-000297
 IAP Map
 NAD 83
 Approx 29,423 ac
 As of 7/8/2015 @ 2127

	Division		Branch		Lookout		Water Source		Planned Fire Line		Planned Secondary Line
	Drop Point		Pump		Safety Zone		Completed Dozer Line		Uncontrolled Fire Edge		Completed Line
	Helispot		Sling Site		H - H Hand Line						

Page 2 of 10
 July 10, 2015
 Night Shift
 Thursday, July 09, 2015 @ 2319 hrs

Miles
 0 0.175 0.35 0.7

Feet
 0 750 1,500 3,000

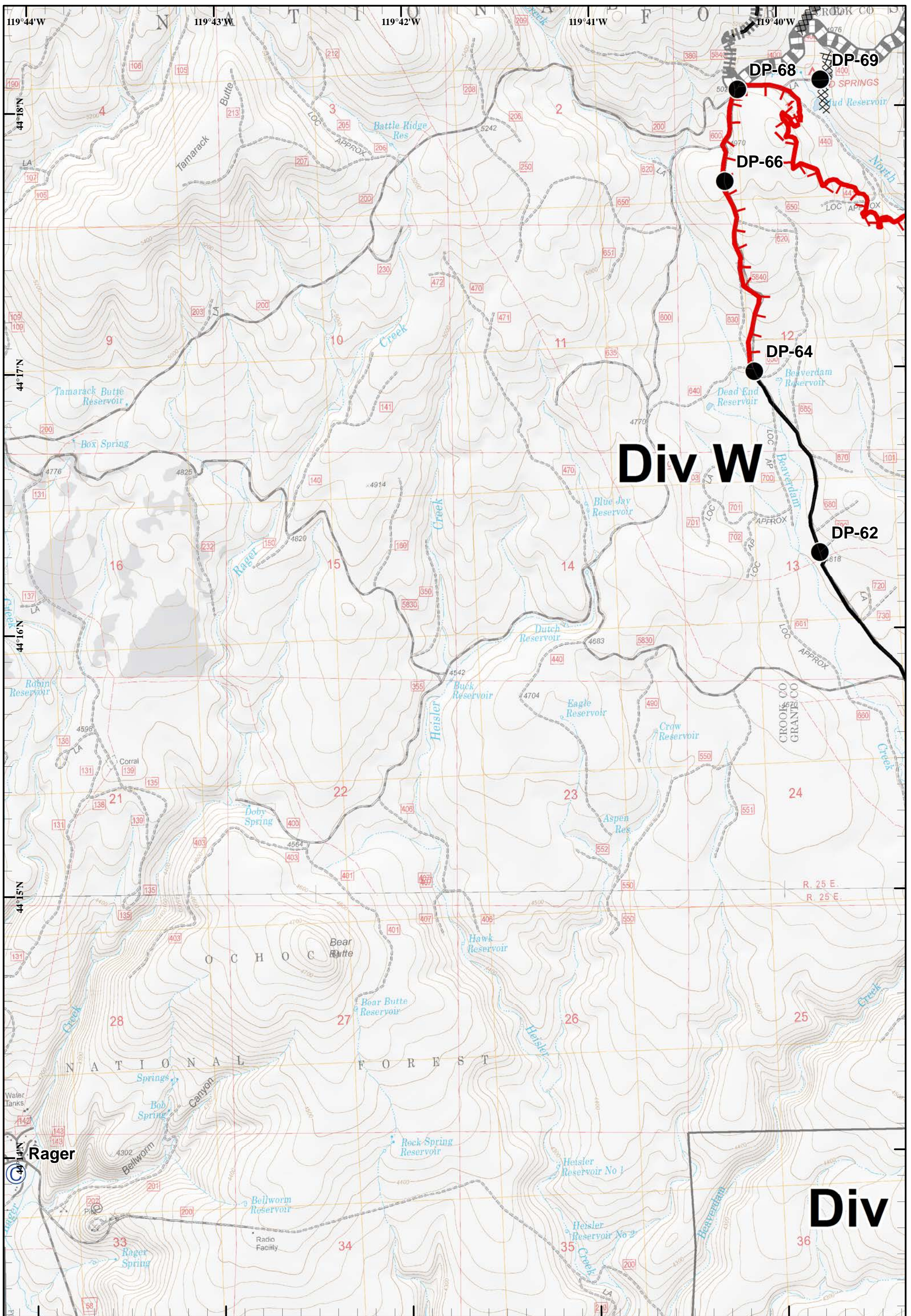


Corner Creek Fire
 OR-OCF-000297
 IAP Map
 NAD 83
 Approx 29,423 ac
 As of 7/8/2015 @ 2127

- | | | | | | | | | | |
|--|----------------------|--|--------------|--|-----------------|--|------------------------|--|---------------|
| | Division | | Branch | | Lookout | | Uncontrolled Fire Edge | | P-Primary |
| | Completed Dozer Line | | Pump | | Sling Site | | Completed Line | | C-Contingency |
| | Drop Point | | Water Source | | H - H Hand Line | | Planned Secondary Line | | USFS |
| | Helispot | | | | | | | | |

Miles
 0 0.175 0.35 0.7
 Feet
 0 750 1,500 3,000

Page 3 of 10
 July 10, 2015
 Night Shift
 Thursday, July 09, 2015 @ 2319 hrs



Corner Creek Fire
 OR-OCF-000297
 IAP Map
 NAD 83
 Approx 29,423 ac
 As of 7/8/2015 @ 2127

- Camp
- Drop Point
- Uncontrolled Fire Edge
- Completed Dozer Line
- Completed Line
- Planned Fire Line
- P-Primary
- A-Alternate
- C-Contingency

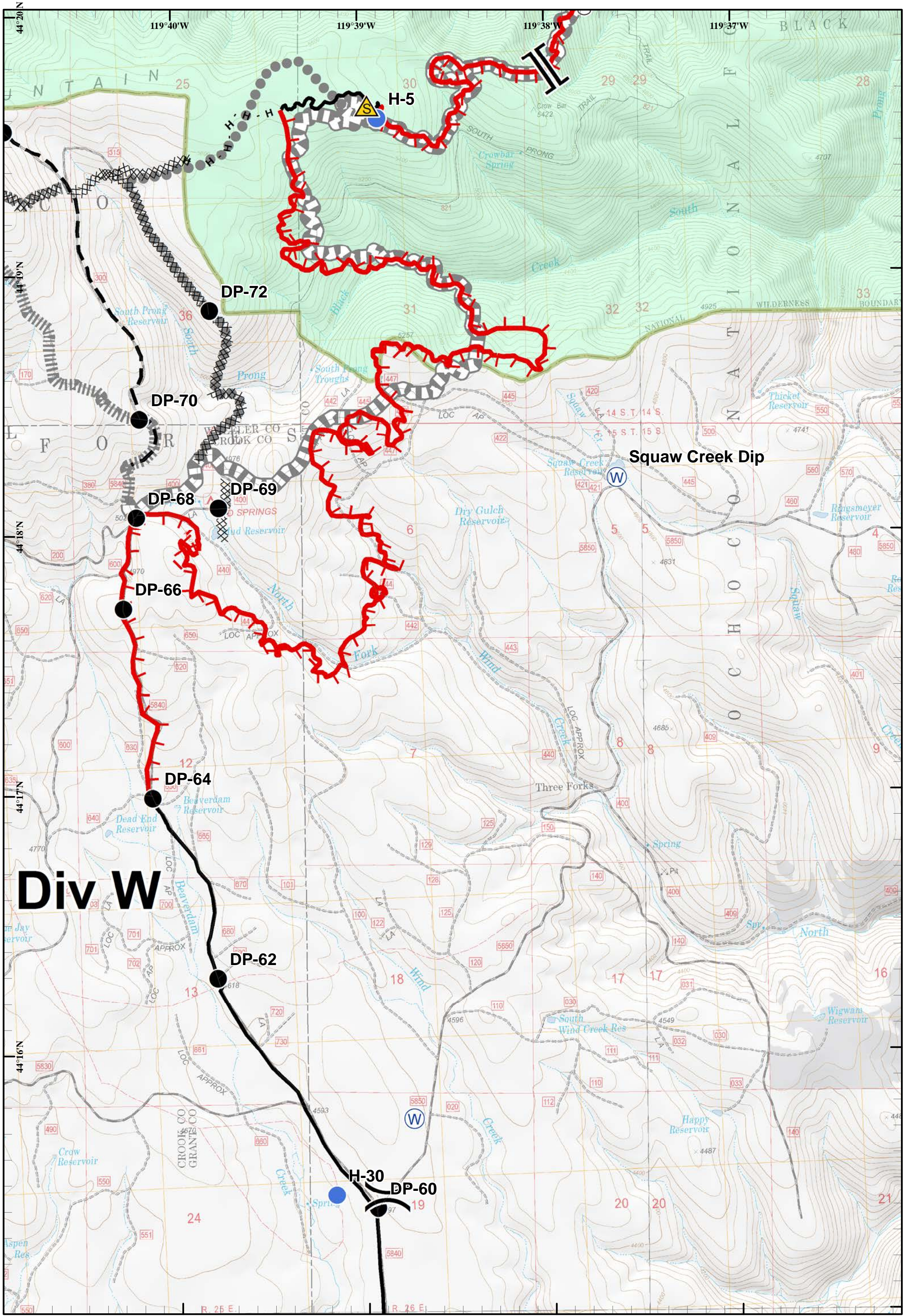
Page 4 of 10

July 10, 2015
Night Shift

Thursday, July 09, 2015 @ 2320 hrs

Miles

Feet



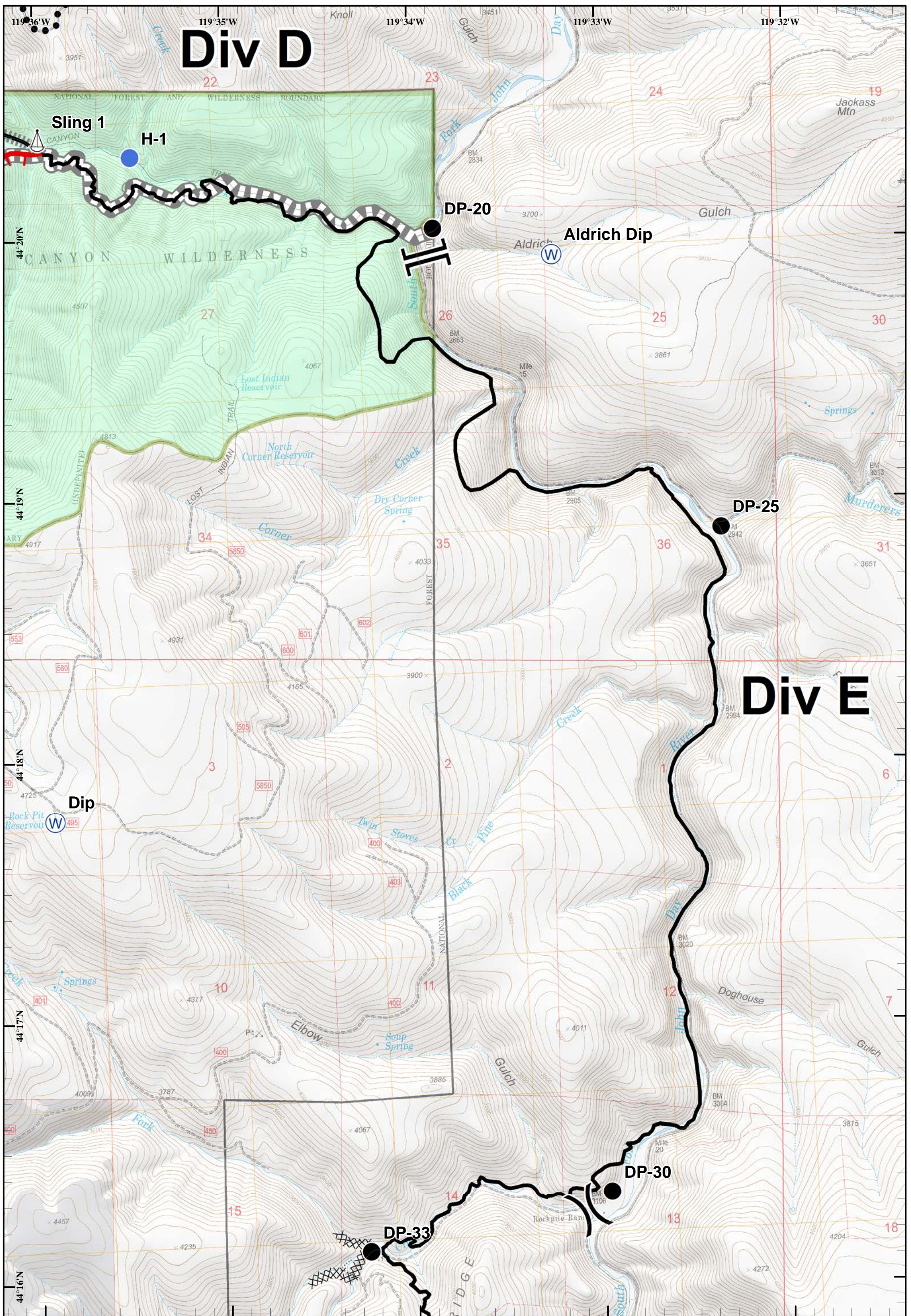
Corner Creek Fire
 OR-OCF-000297
 IAP Map
 NAD 83
 Approx 29,423 ac
 As of 7/8/2015 @ 2127

- | | | | | |
|----------------|------------|------------------------|----------------------|---------------|
| Division | Branch | Safety Zone | Completed Dozer Line | A-Alternate |
| Completed Line | Sling Site | Water Source | H - H Hand Line | C-Contingency |
| Drop Point | Helispot | Uncontrolled Fire Edge | Planned Fire Line | USFS |
| | | | P-Primary | |

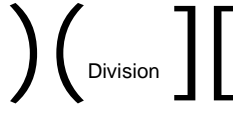
Miles
 0 0.175 0.35 0.7

Feet
 0 750 1,500 3,000

Page 5 of 10
 July 10, 2015
 Night Shift
 Thursday, July 09, 2015 @ 2320 hrs

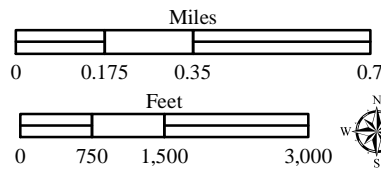


Corner Creek Fire
 OR-OCF-000297
 IAP Map
 NAD 83
 Approx 29,423 ac
 As of 7/8/2015 @ 2127

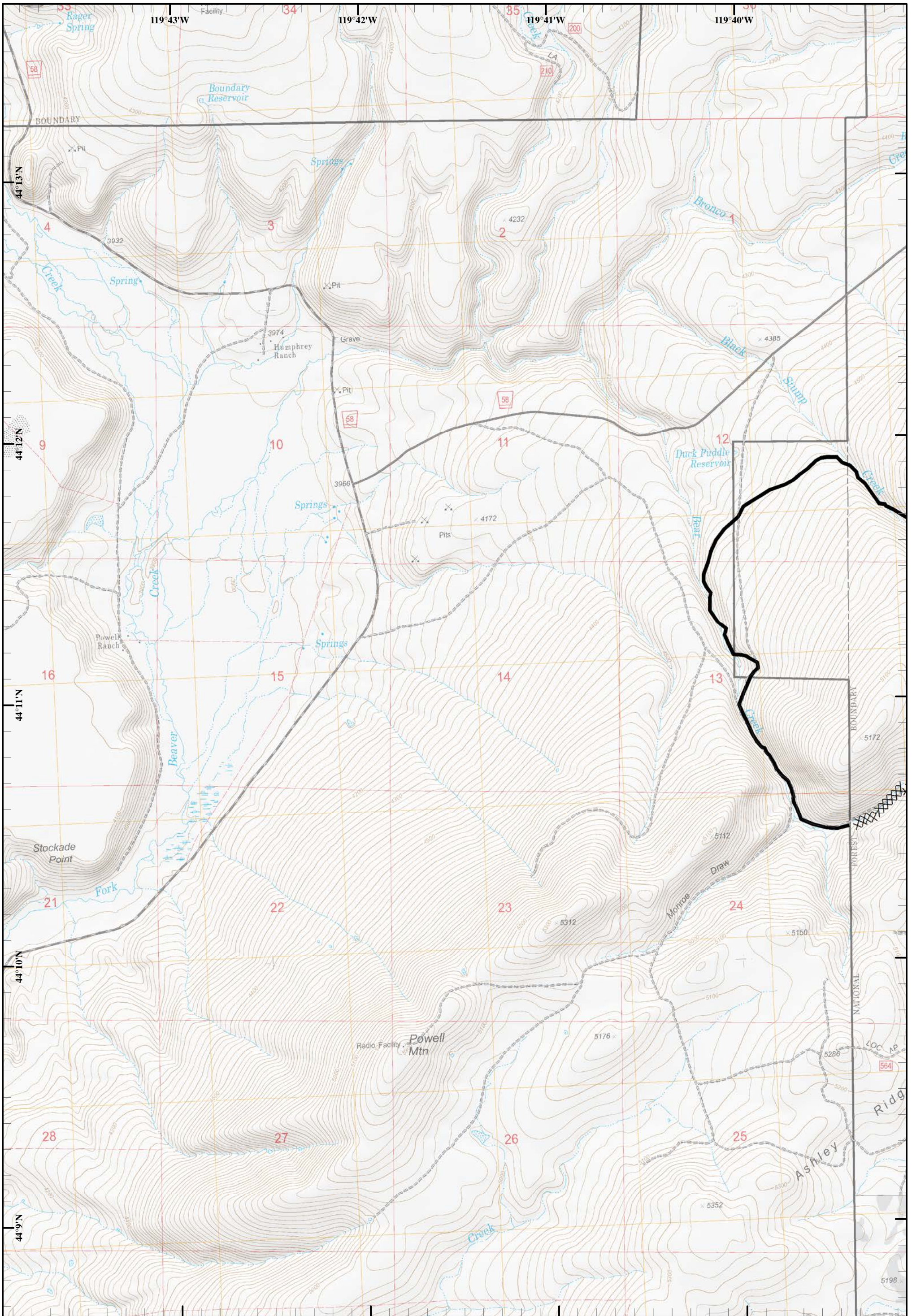


- Sling Site
- Water Source
- Drop Point
- Helispot
- Uncontrolled Fire Edge
- Completed Dozer Line

- Completed Line
- Planned Secondary Line
- P-Primary
- C-Contingency
- USFS

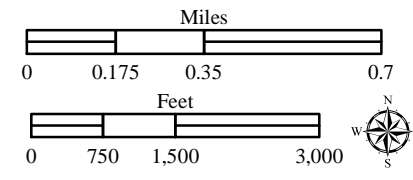


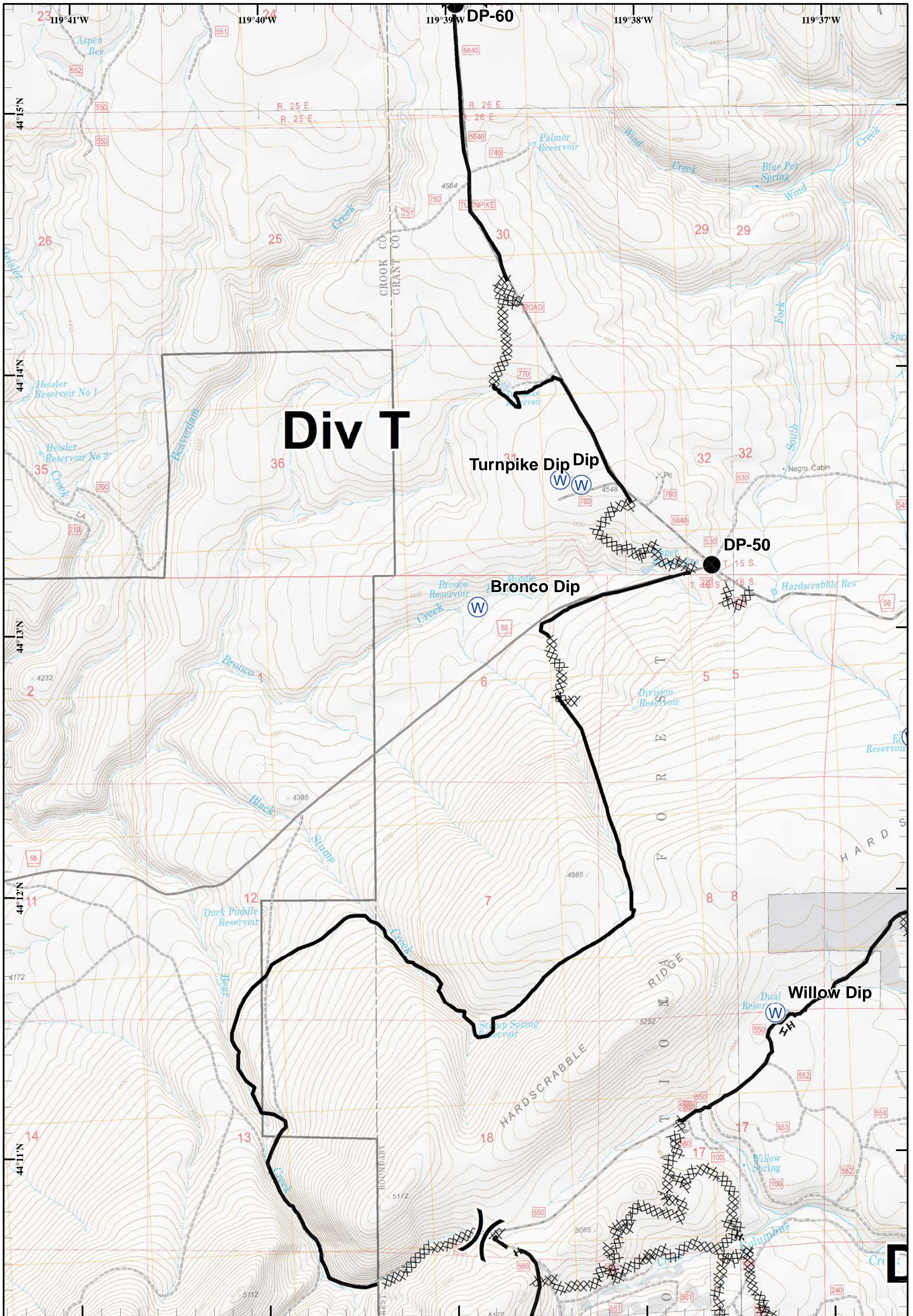
Page 6 of 10
 July 10, 2015
 Night Shift
 Thursday, July 09, 2015 @ 2320 hrs



Corner Creek Fire
 OR-OCF-000297
 IAP Map
 NAD 83
 Approx 29,423 ac
 As of 7/8/2015 @ 2127

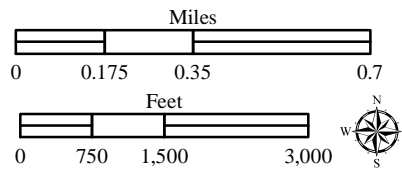
XXXXXX Completed Dozer Line
 ——— Completed Line

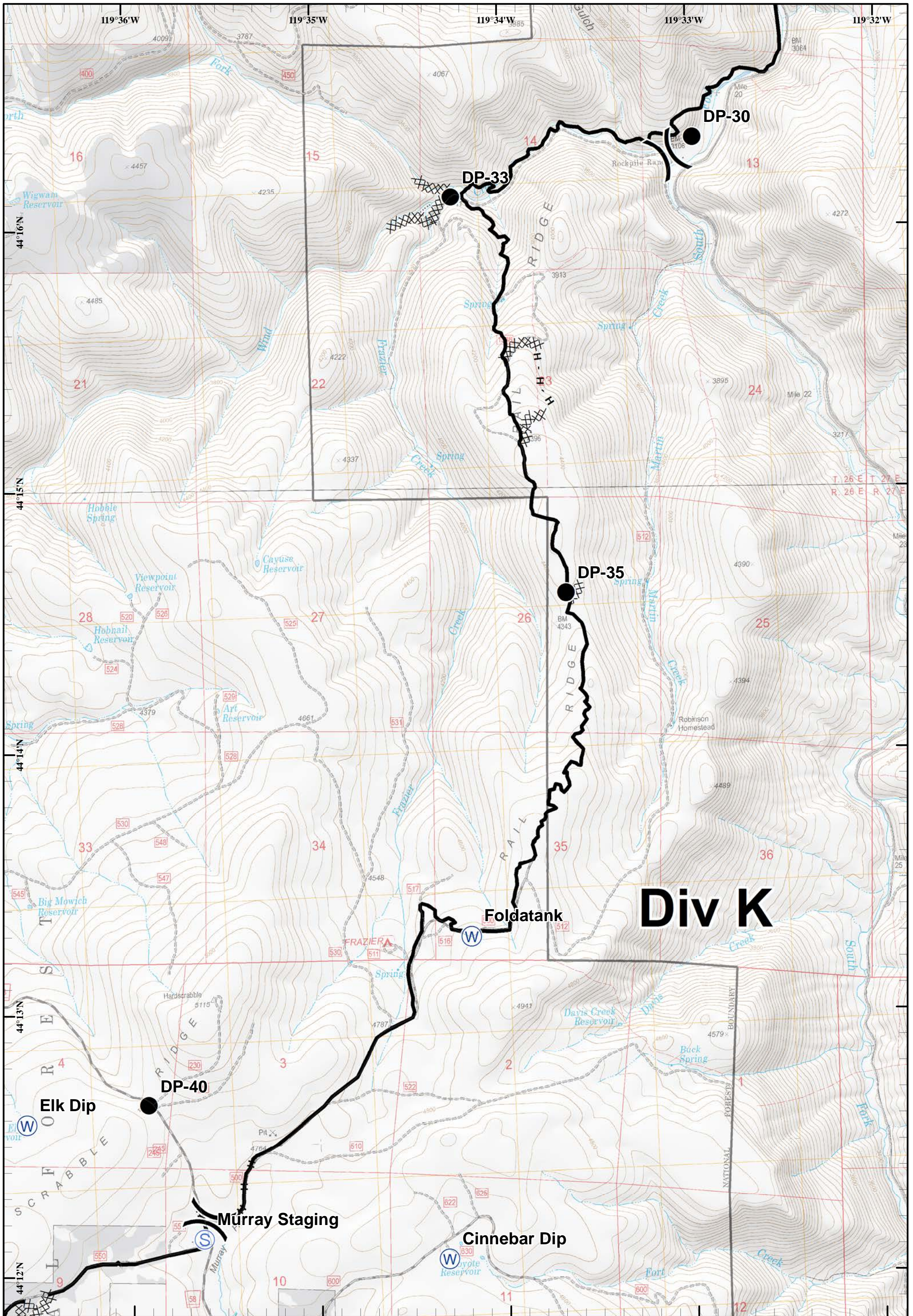




Corner Creek Fire
 OR-OCF-000297
 IAP Map
 NAD 83
 Approx 29,423 ac
 As of 7/8/2015 @ 2127

- Division
- Water Source
- Completed Dozer Line
- Completed Line
- Drop Point
- H - H Hand Line

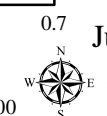
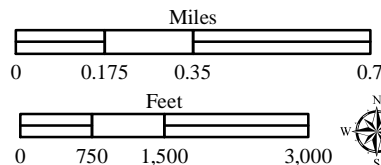


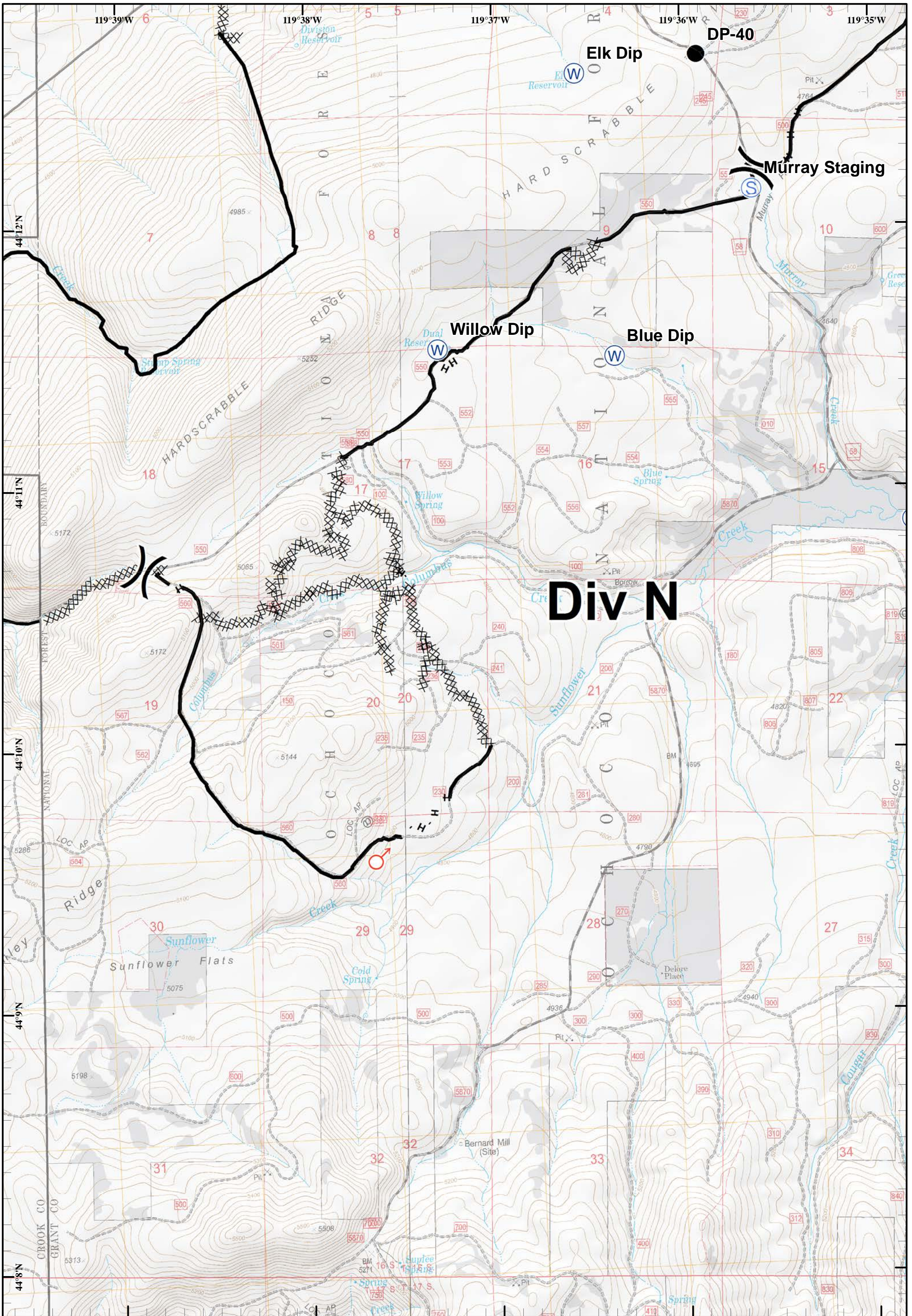


Div K

Corner Creek Fire
 OR-OCF-000297
 IAP Map
 NAD 83
 Approx 29,423 ac
 As of 7/8/2015 @ 2127

- Division
- Staging Area
- Water Source
- Completed Dozer Line
- Drop Point
- Completed Line
- H - H Hand Line





Corner Creek Fire
 OR-OCF-000297
 IAP Map
 NAD 83
 Approx 29,423 ac
 As of 7/8/2015 @ 2127

- Division
- Spot Fire
- Completed Dozer Line
- Completed Line
- Staging Area
- H - H Hand Line
- Water Source

