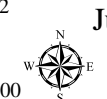
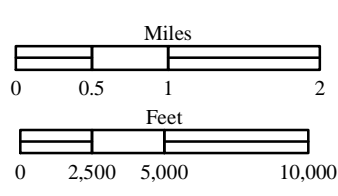


**Corner Creek Fire**  
 OR-OCF-000297  
 IAP Map  
 NAD 83  
 Approx 29,423 ac  
 As of 7/8/2015 @ 2127

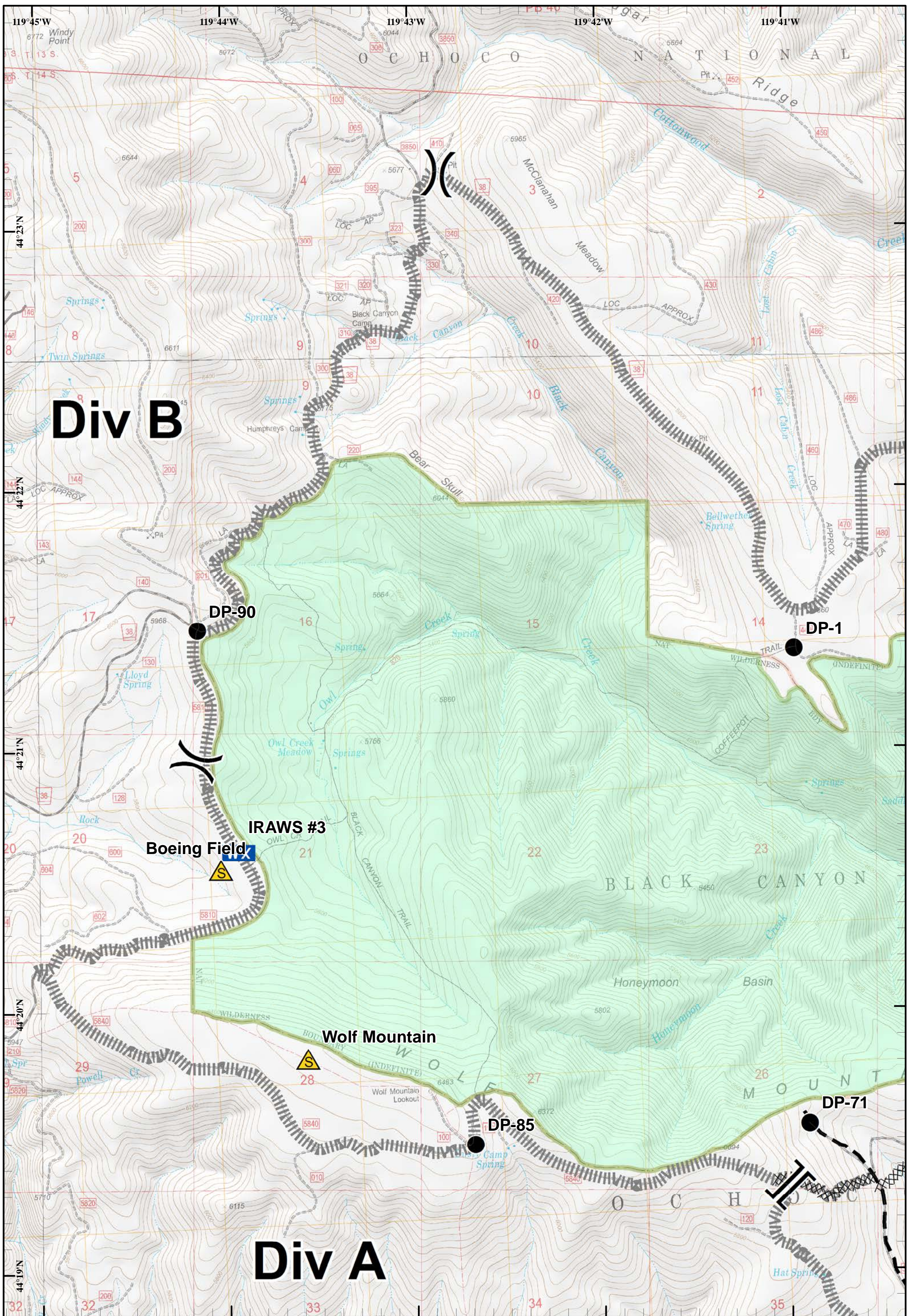
 Division
  Branch



**Index**  
 July 11, 2015  
 Day Shift

Friday, July 10, 2015 @ 2219 hrs





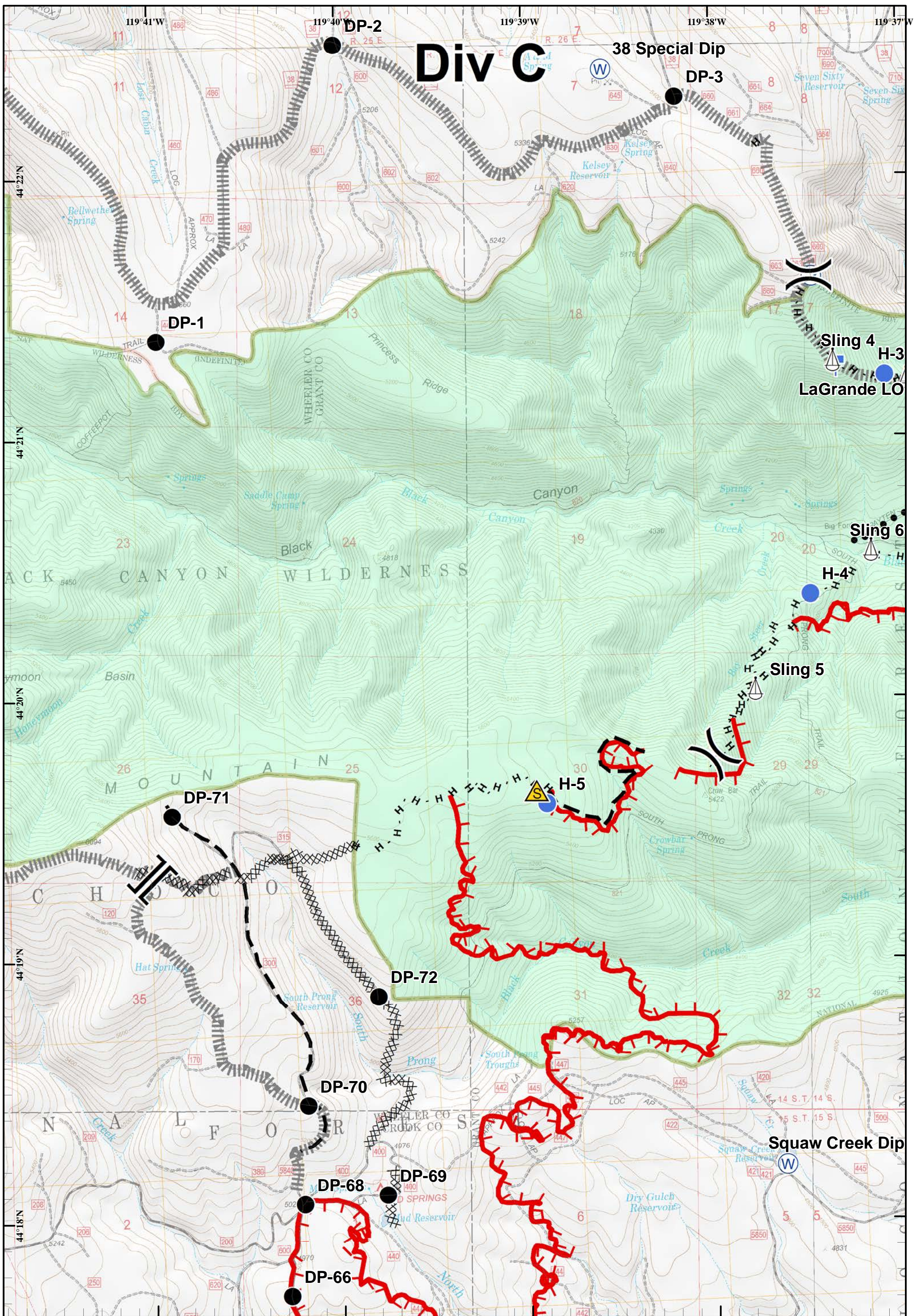
**Corner Creek Fire**  
 OR-OCF-000297  
 IAP Map  
 NAD 83  
 Approx 29,423 ac  
 As of 7/8/2015 @ 2127

- Division
- Branch
- Mobile Weather Unit
- Safety Zone
- Drop Point
- Completed Dozer Line
- Planned Fire Line
- C-Contingency
- USFS

Page 1 of 10  
 July 11, 2015  
 Day Shift  
 Friday, July 10, 2015 @ 2221 hrs

Miles: 0, 0.175, 0.35, 0.7  
 Feet: 0, 750, 1,500, 3,000





**Corner Creek Fire**  
 OR-OCF-000297  
 IAP Map  
 NAD 83  
 Approx 29,423 ac  
 As of 7/8/2015 @ 2127

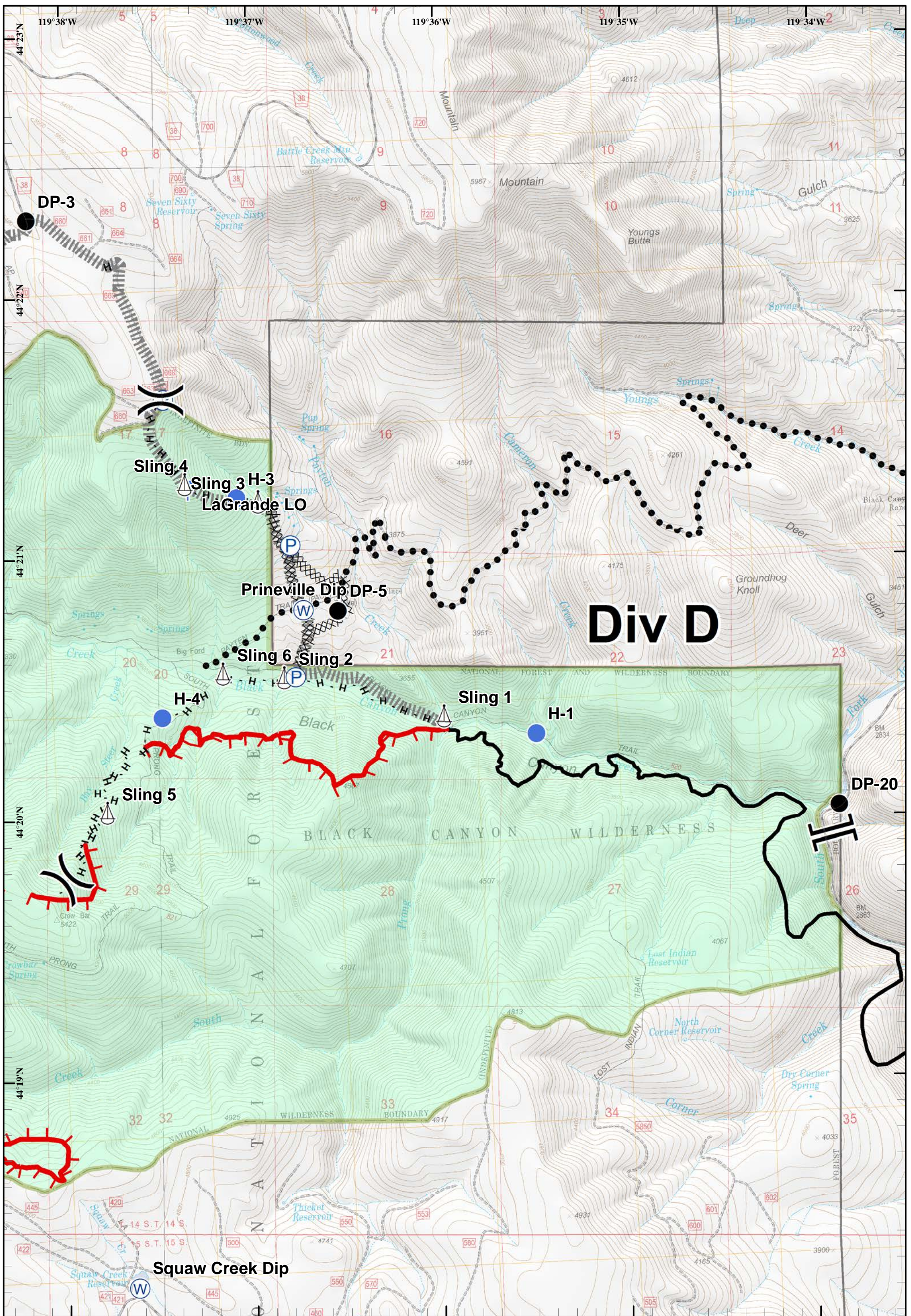
- |  |            |  |             |  |                        |  |                        |
|--|------------|--|-------------|--|------------------------|--|------------------------|
|  | Division   |  | Lookout     |  | Water Source           |  | Planned Secondary Line |
|  | Branch     |  | Pump        |  | Uncontrolled Fire Edge |  | C-Contingency          |
|  | Drop Point |  | Safety Zone |  | Completed Dozer Line   |  | USFS                   |
|  | Helispot   |  | Sling Site  |  | H - H Hand Line        |  | Planned Fire Line      |

Miles  
 0 0.175 0.35 0.7

Feet  
 0 750 1,500 3,000

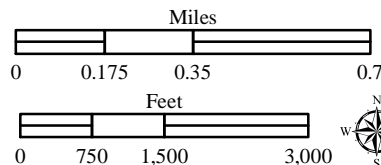
Page 2 of 10  
 July 11, 2015  
 Day Shift  
 Friday, July 10, 2015 @ 2221 hrs





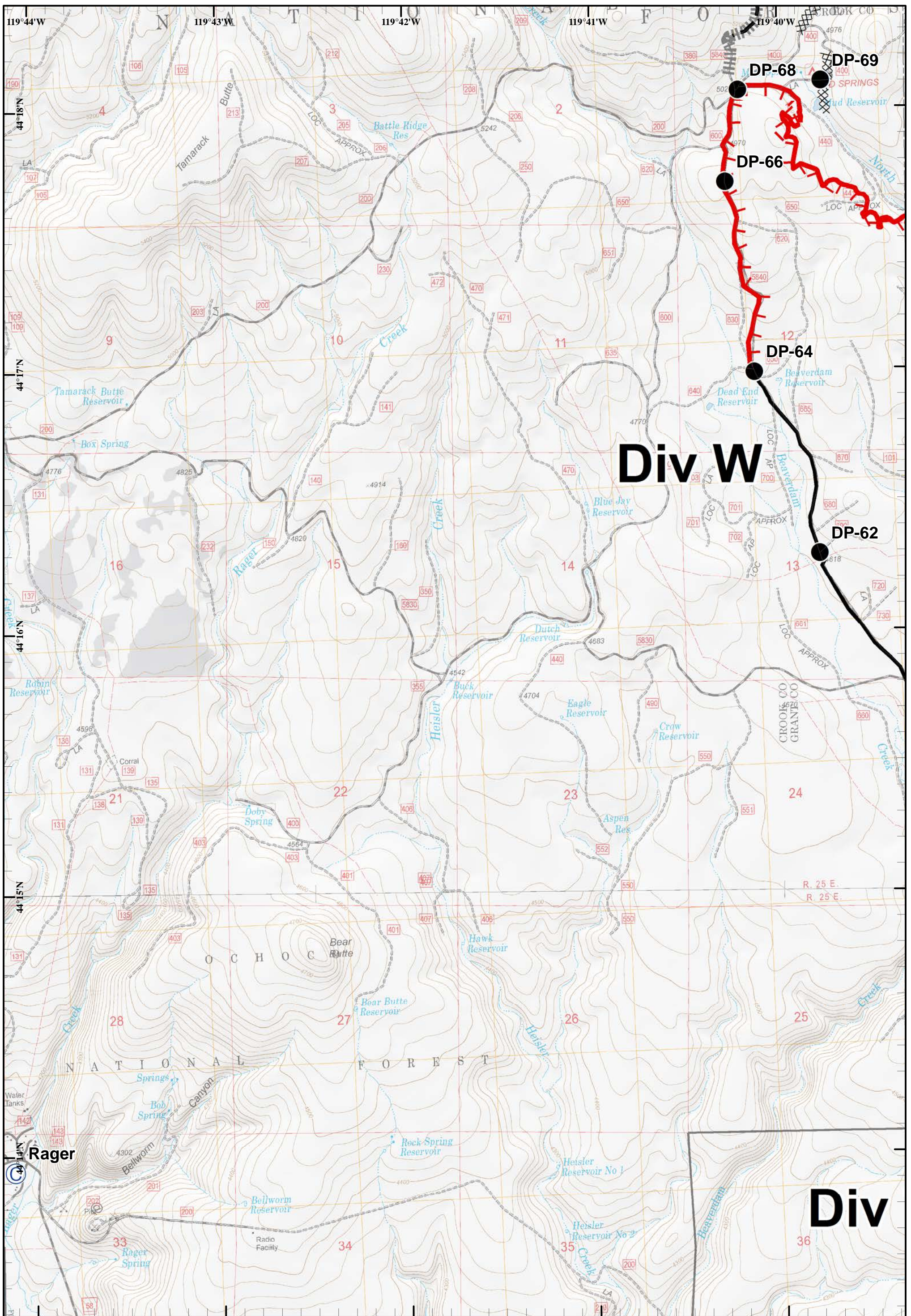
**Corner Creek Fire**  
 OR-OCF-000297  
 IAP Map  
 NAD 83  
 Approx 29,423 ac  
 As of 7/8/2015 @ 2127

- |  |            |  |            |  |              |  |                        |  |               |
|--|------------|--|------------|--|--------------|--|------------------------|--|---------------|
|  | Division   |  | Branch     |  | Lookout      |  | Uncontrolled Fire Edge |  | C-Contingency |
|  | Drop Point |  | Sling Site |  | Water Source |  | Completed Dozer Line   |  | USFS          |
|  | Helispot   |  |            |  |              |  | Completed Line         |  |               |
|  |            |  |            |  |              |  | H - H Hand Line        |  |               |
|  |            |  |            |  |              |  | Planned Secondary Line |  |               |










Page 3 of 10  
 July 11, 2015  
 Day Shift  
 Friday, July 10, 2015 @ 2221 hrs





**Corner Creek Fire**  
 OR-OCF-000297  
 IAP Map  
 NAD 83  
 Approx 29,423 ac  
 As of 7/8/2015 @ 2127

-  Camp
-  Drop Point
-  Uncontrolled Fire Edge
-  Completed Dozer Line

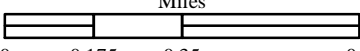
-  Completed Line
-  Planned Fire Line
-  C-Contingency

Page 4 of 10

July 11, 2015  
Day Shift

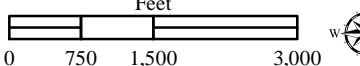
Friday, July 10, 2015 @ 2221 hrs

Miles




0 0.175 0.35 0.7

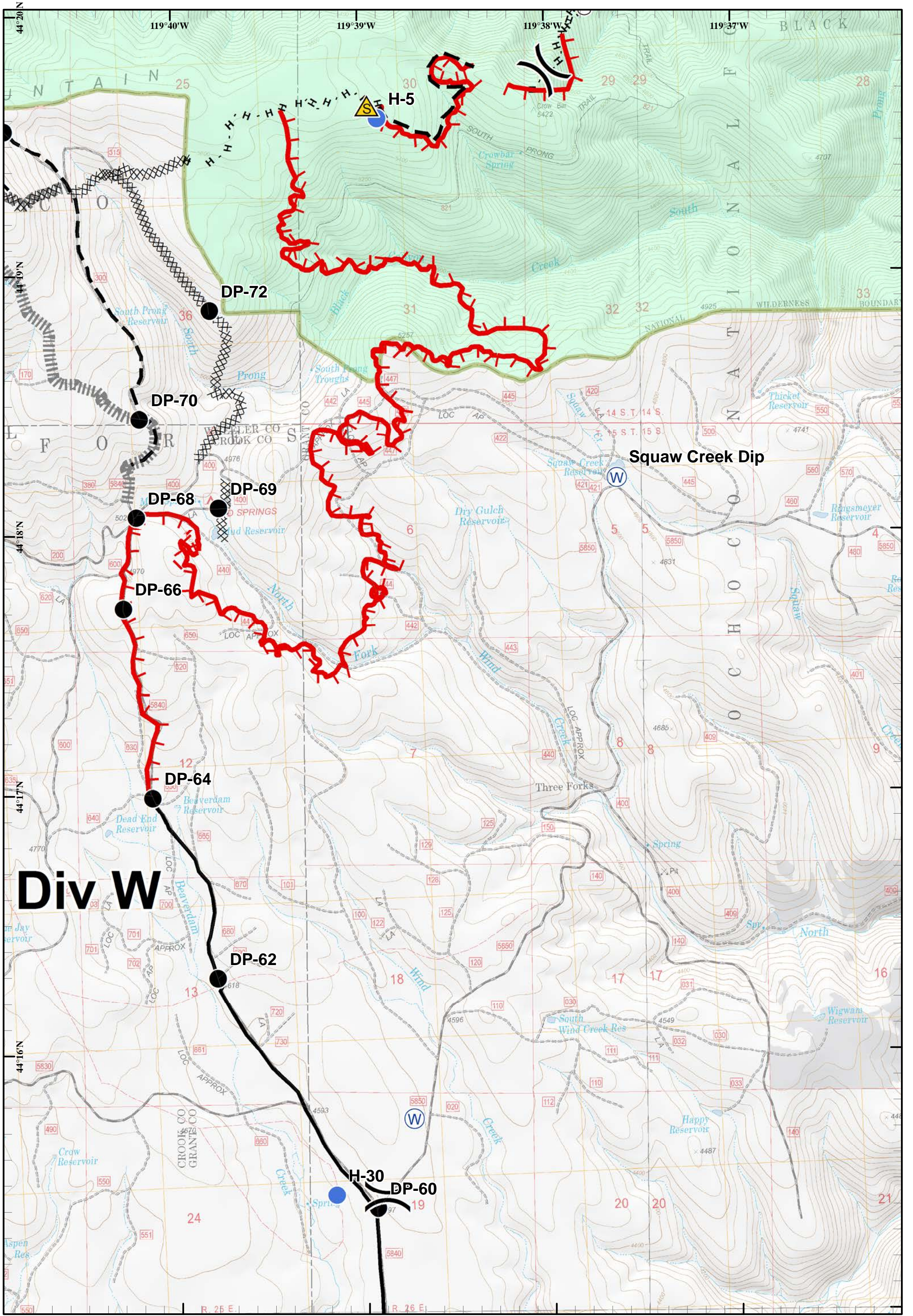
Feet



0 750 1,500 3,000

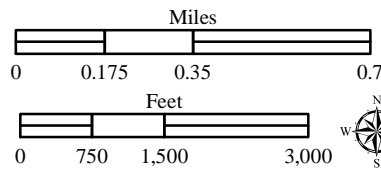




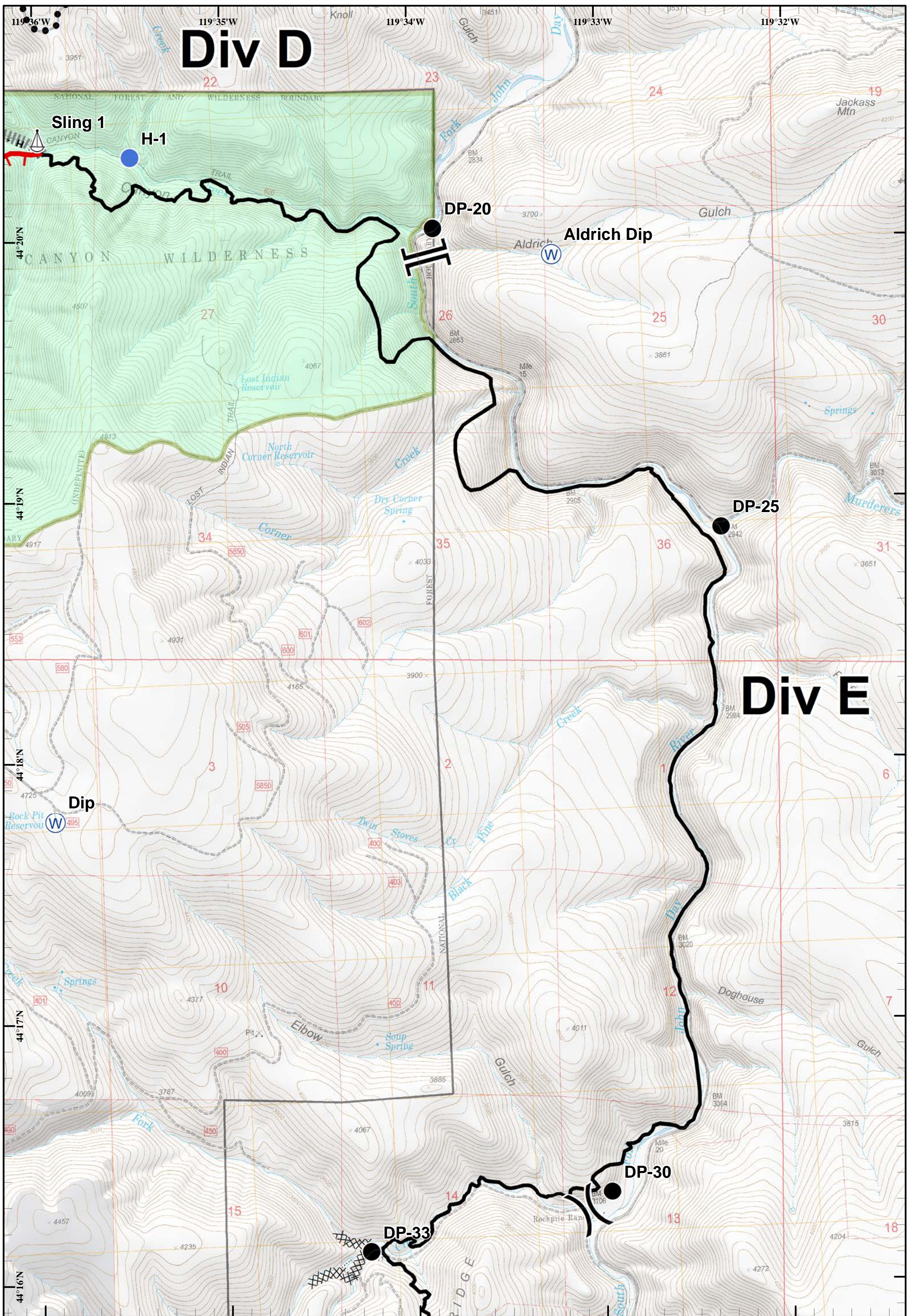


**Corner Creek Fire**  
 OR-OCF-000297  
 IAP Map  
 NAD 83  
 Approx 29,423 ac  
 As of 7/8/2015 @ 2127

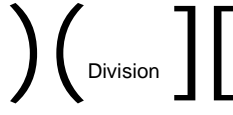
- Division
- Helispot
- Safety Zone
- Sling Site
- Water Source
- Uncontrolled Fire Edge
- Completed Dozer Line
- Completed Line
- Planned Fire Line
- C-Contingency
- USFS
- H - H Hand Line





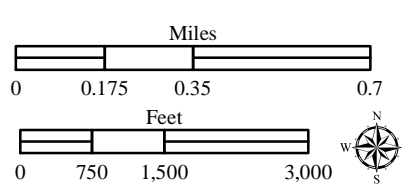


**Corner Creek Fire**  
 OR-OCF-000297  
 IAP Map  
 NAD 83  
 Approx 29,423 ac  
 As of 7/8/2015 @ 2127

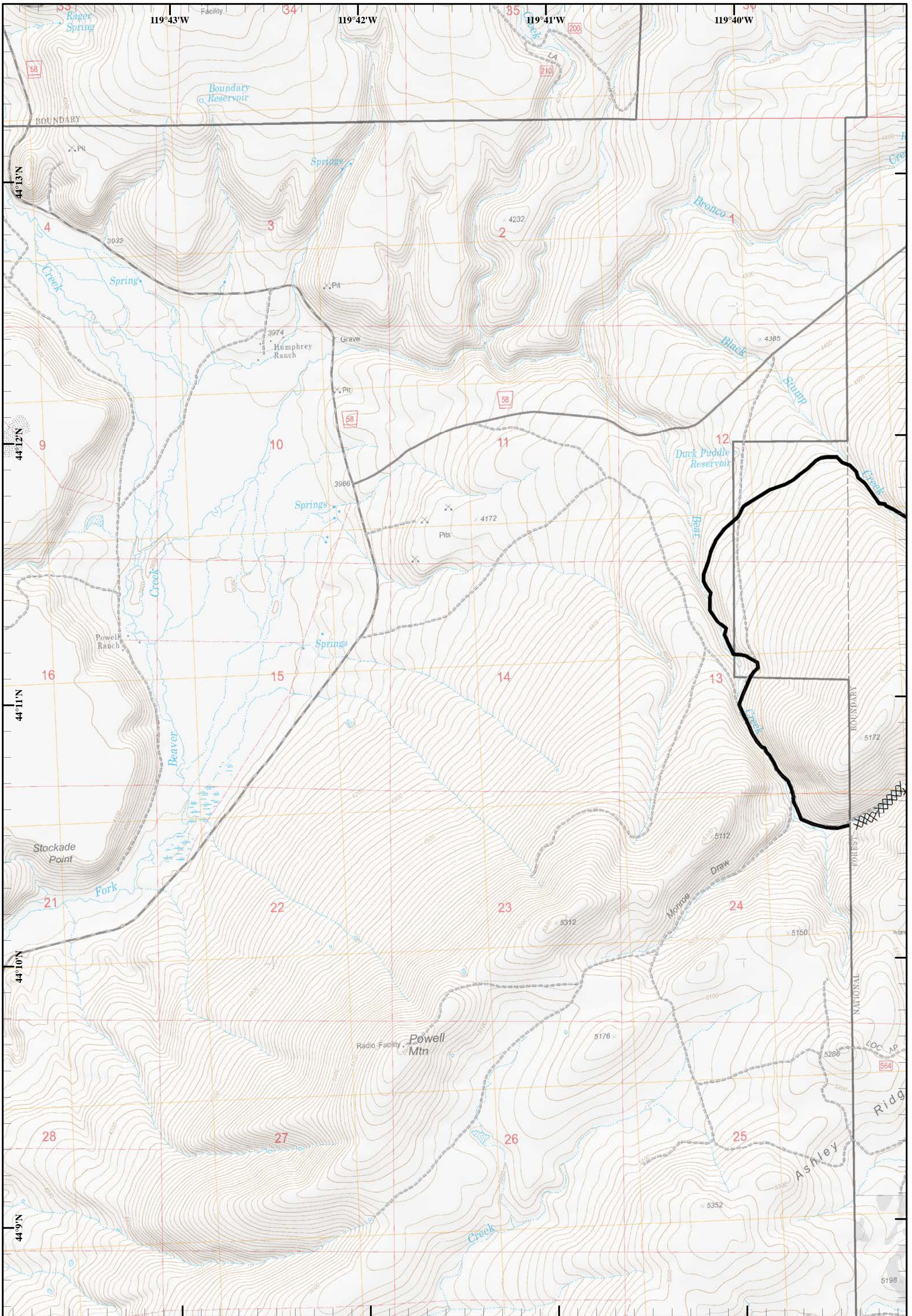


- Sling Site
- Water Source
- Drop Point
- Helispot
- Uncontrolled Fire Edge
- Completed Dozer Line

- Completed Line
- H - H Hand Line
- Planned Secondary Line
- C-Contingency
- USFS

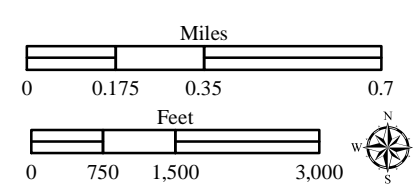




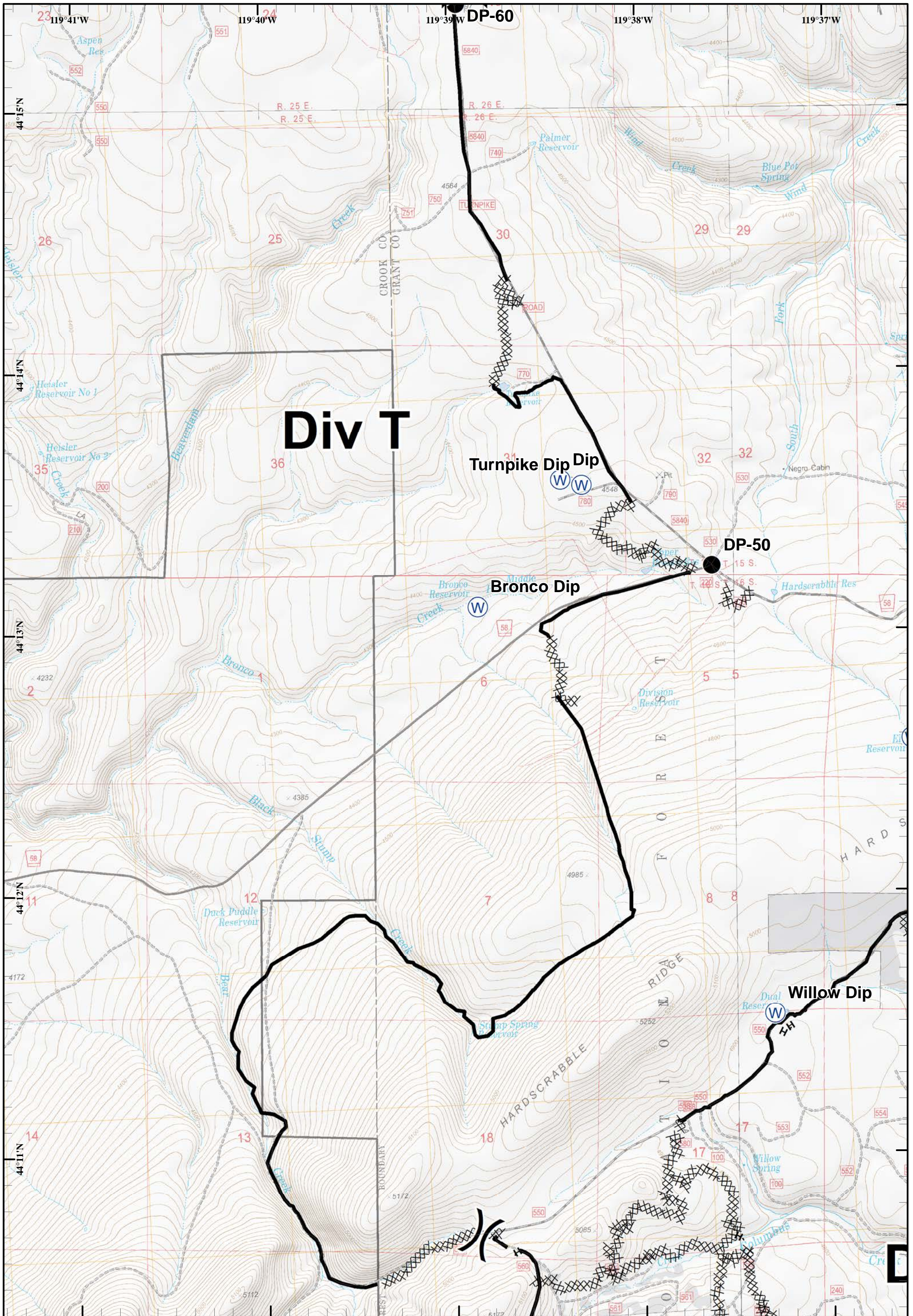


**Corner Creek Fire**  
 OR-OCF-000297  
 IAP Map  
 NAD 83  
 Approx 29,423 ac  
 As of 7/8/2015 @ 2127

XXXXXX Completed Dozer Line  
 ——— Completed Line

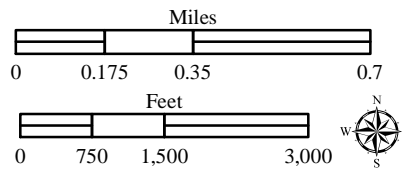




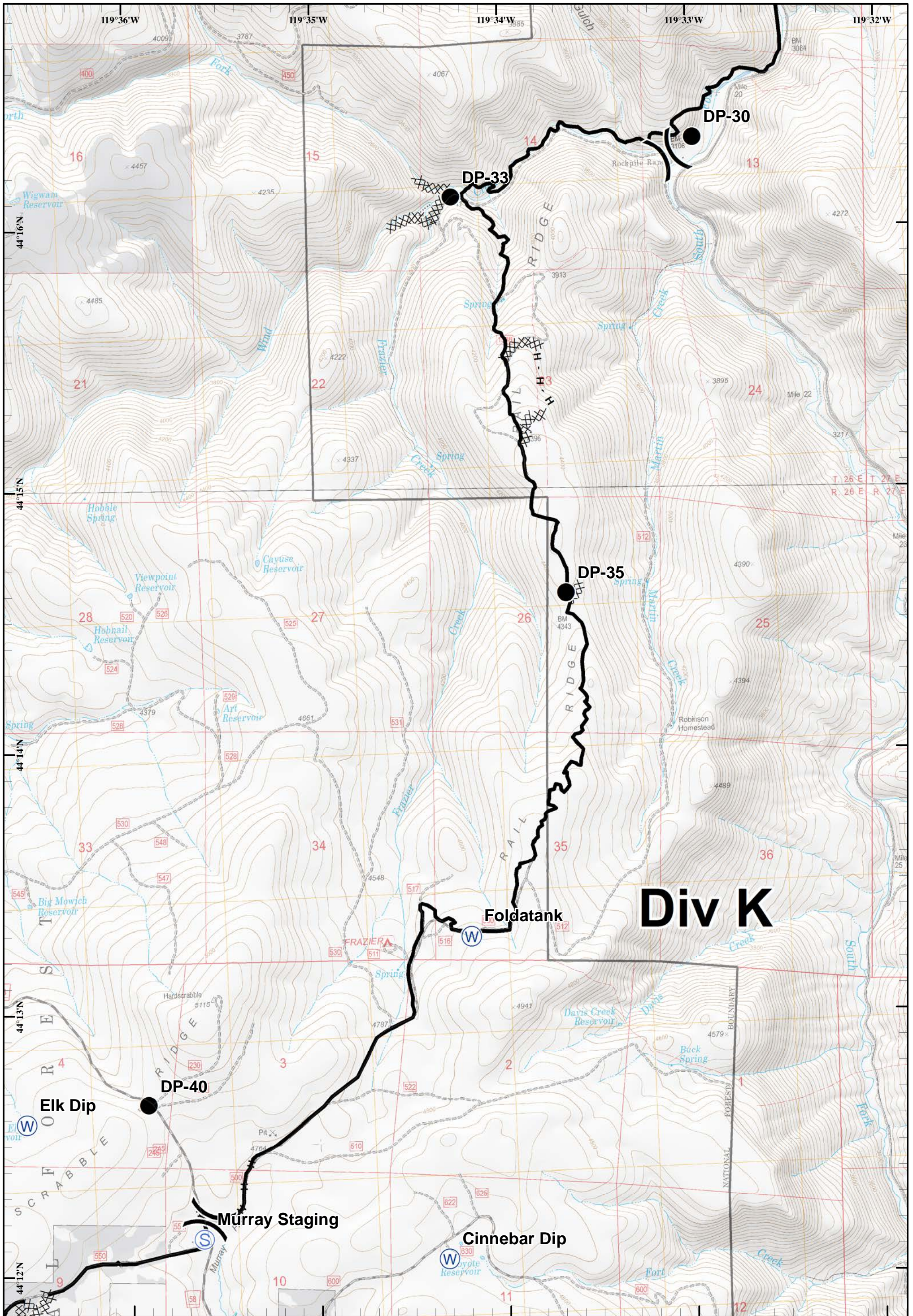


**Corner Creek Fire**  
 OR-OCF-000297  
 IAP Map  
 NAD 83  
 Approx 29,423 ac  
 As of 7/8/2015 @ 2127

- Division
- Water Source
- Completed Dozer Line
- Completed Line
- Drop Point
- H - H Hand Line



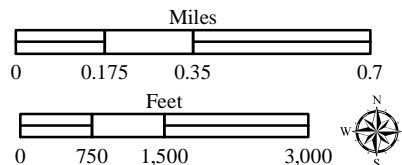




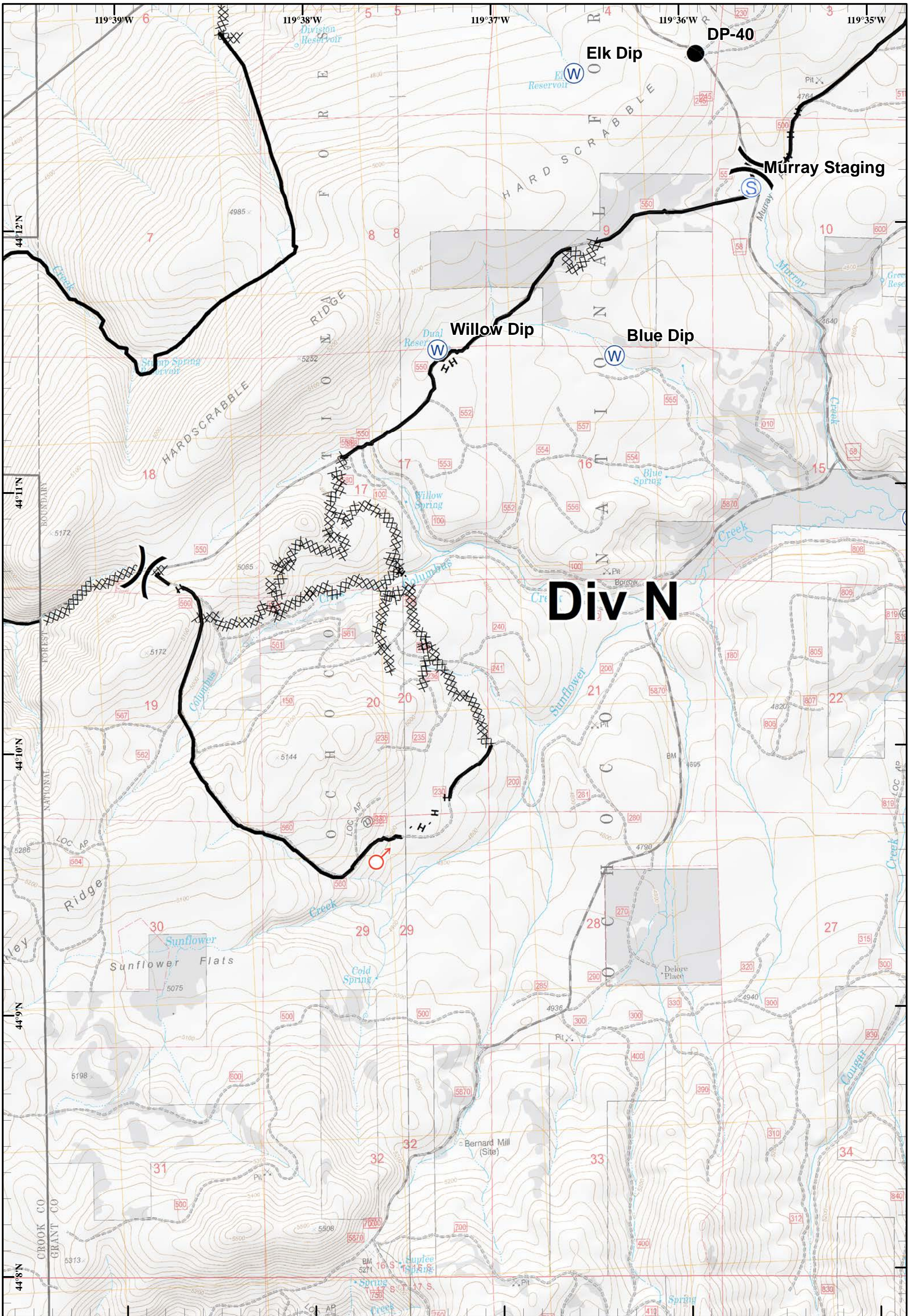
# Div K

**Corner Creek Fire**  
 OR-OCF-000297  
 IAP Map  
 NAD 83  
 Approx 29,423 ac  
 As of 7/8/2015 @ 2127





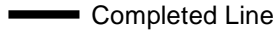
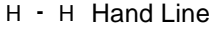


- Division
- Staging Area
- Water Source
- Completed Dozer Line
- Drop Point
- Completed Line
- H - H Hand Line







**Corner Creek Fire**  
 OR-OCF-000297  
 IAP Map  
 NAD 83  
 Approx 29,423 ac  
 As of 7/8/2015 @ 2127

-  Division
-  Spot Fire
-  Completed Dozer Line
-  Staging Area
-  Completed Line
-  H - H Hand Line
-  Drop Point
-  Water Source

