

Corner Creek

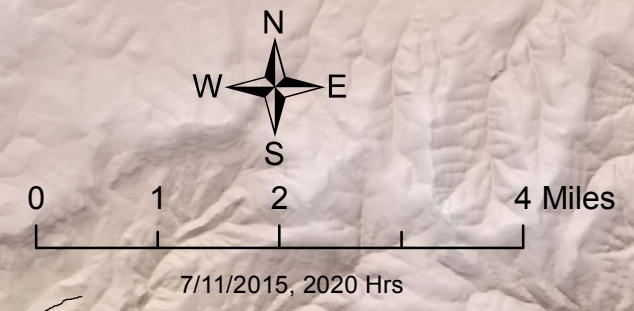
Point Name	Point Type	Lat	Long
Base Camp	Camp	44° 29' 43.6"N	119° 34' 53.47"W
Rager Spike	Camp	44° 13' 9.39"N	119° 44' 6.84"W
Wilderness Spike	Camp	44° 21' 11.8"N	119° 48' 29.94"W
Longbox	Helibase	44° 27' 48.3"N	119° 25' 30.9"W
H-1	Helispot	44° 20' 31.9"N	119° 35' 28.99"W
H-20	Helispot	44° 10' 9.38"N	119° 34' 11.16"W
H-3	Helispot	44° 21' 23.1"N	119° 37' 4.35"W
H-30	Helispot	44° 15' 45.2"N	119° 39' 10.13"W
H-4	Helispot	44° 20' 39.1"N	119° 37' 28.84"W
H-5	Helispot	44° 19' 59.7"N	119° 38' 53.88"W
ICP	Incident Command	44° 28' 03.5"N	119° 32' 17.03"W
LaGrande LO	Lookout	44° 21' 26.2"N	119° 37' 19.62"W
IRAWS #3	Mobile Weather Unit	44° 20' 6.1"N	119° 43' 56.28"W
IRAWS #4	Mobile Weather Unit	44° 11' 7.8"N	119° 33' 51.06"W
Pump	Pump	44° 20' 54.3"N	119° 36' 46"W
Pump	Pump	44° 21' 6.08"N	119° 37' 27.6"W
Pump	Pump	44° 21' 0.48"N	119° 36' 47.25"W
Boeing Field	Safety Zone	44° 20' 54.2"N	119° 44' 1.98"W
Wolf Mountain	Safety Zone	44° 19' 8.15"N	119° 43' 34.5"W
Safety Zone	Safety Zone	44° 19' 6.43"N	119° 38' 57.1"W
Sling 1	Sling Site	44° 20' 39.1"N	119° 35' 58.62"W
Sling 2	Sling Site	44° 20' 54.2"N	119° 36' 49.62"W
Sling 4	Sling Site	44° 21' 28.7"N	119° 37' 20.93"W
Sling 3	Sling Site	44° 21' 21.7"N	119° 36' 57.49"W
Sling 5	Sling Site	44° 20' 0.3"N	119° 37' 46.74"W
Sling 6	Sling Site	44° 20' 55.9"N	119° 37' 9.3"W
Spot Fire	Spot Fire	44° 9' 57.6"N	119° 37' 39.01"W
Murray Staging	Staging Area	44° 12' 13.7"N	119° 35' 37.48"W
38 Special Dip	Water Source	44° 22' 40.7"N	119° 38' 34.5"W
Water Source	Water Source	44° 15' 7.44"N	119° 38' 45.02"W
Aldrich Dip	Water Source	44° 19' 9.31"N	119° 33' 14.32"W
Dip	Water Source	44° 17' 7.74"N	119° 35' 55.11"W
Squaw Creek Dip	Water Source	44° 18' 20.7"N	119° 37' 37.91"W
Tumpike Dip	Water Source	44° 13' 55.8"N	119° 38' 18.24"W
Bronco Dip	Water Source	44° 13' 0.95"N	119° 38' 51.67"W
Elk Dip	Water Source	44° 12' 58.1"N	119° 36' 33.68"W
Cinnebar Dip	Water Source	44° 12' 0.53"N	119° 34' 19.32"W
Dry Creek Dip	Water Source	44° 10' 8.67"N	119° 34' 47.22"W
Blue Dip	Water Source	44° 11' 5"N	119° 36' 21.67"W
Willow Dip	Water Source	44° 11' 5.33"N	119° 37' 18.1"W
Foldatank	Water Source	44° 13' 28.8"N	119° 34' 11.17"W
Prineville Dip	Water Source	44° 20' 8"N	119° 36' 43.32"W
Dip	Water Source	44° 13' 57.8"N	119° 38' 25"W

153 West Fork

Point Name	Point Type	Lat	Long
Aldrich LO	Lookout	44° 22' 39.07"N	119° 27' 4.53"W
H-100	Helispot	44° 23' 30"N	119° 22' 51"W
H-111	Helispot	44° 22' 30.9"N	119° 22' 5.96"W
Longbox	Helibase	44° 27' 29"N	119° 25' 30.9"W

Corner Creek and 153 West Fork Fires
 July 12, 2015
 Day Shift
 Air Operations

Corner Creek 29375 Ac
 153 West Fork 770 Ac
 as of 7/11/15 @1800



() Division	Incident Command Post	Uncontrolled Fire Edge	Contingency Lines	Wilderness
Branch	Lookout	Completed Dozer Line	C-Contingency	TFR
⊙ Camp	Mobile Weather Unit	Completed Line	Highways and Main Roads	
⊗ Fire Origin	Safety Zone	H - H Hand Line		
⊕ Helibase	Sling Site	Planned Fire Line		
⊙ Helispot	Spot Fire	Planned Secondary Line		
	Staging Area			
	Water Source			