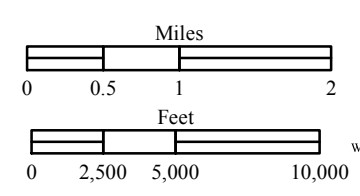
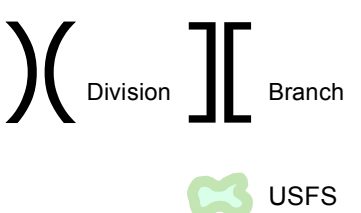
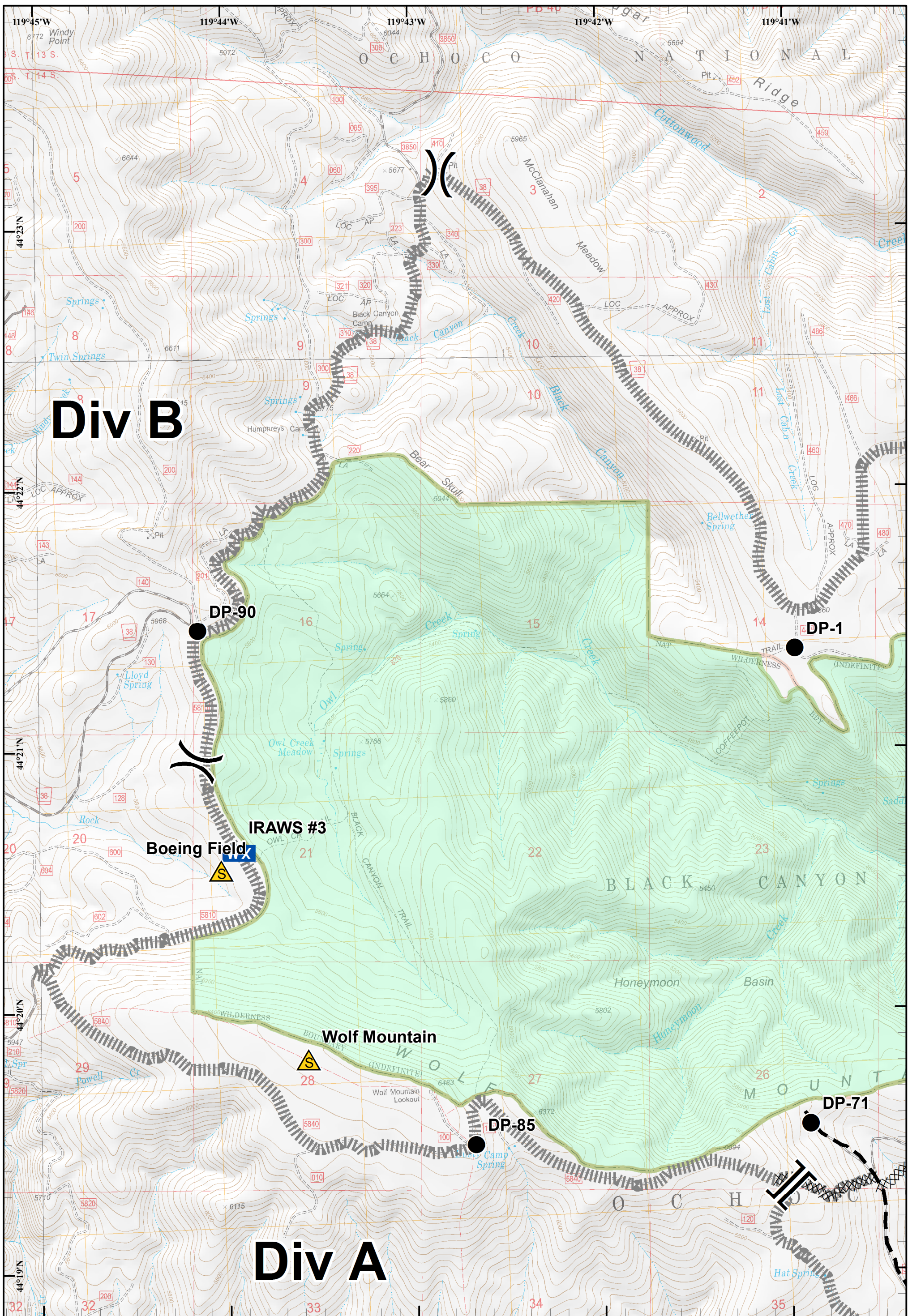


Corner Creek Fire
 OR-OCF-000297
 IAP Map
 NAD 83
 Approx 29,423 ac
 As of 7/8/2015 @ 2127

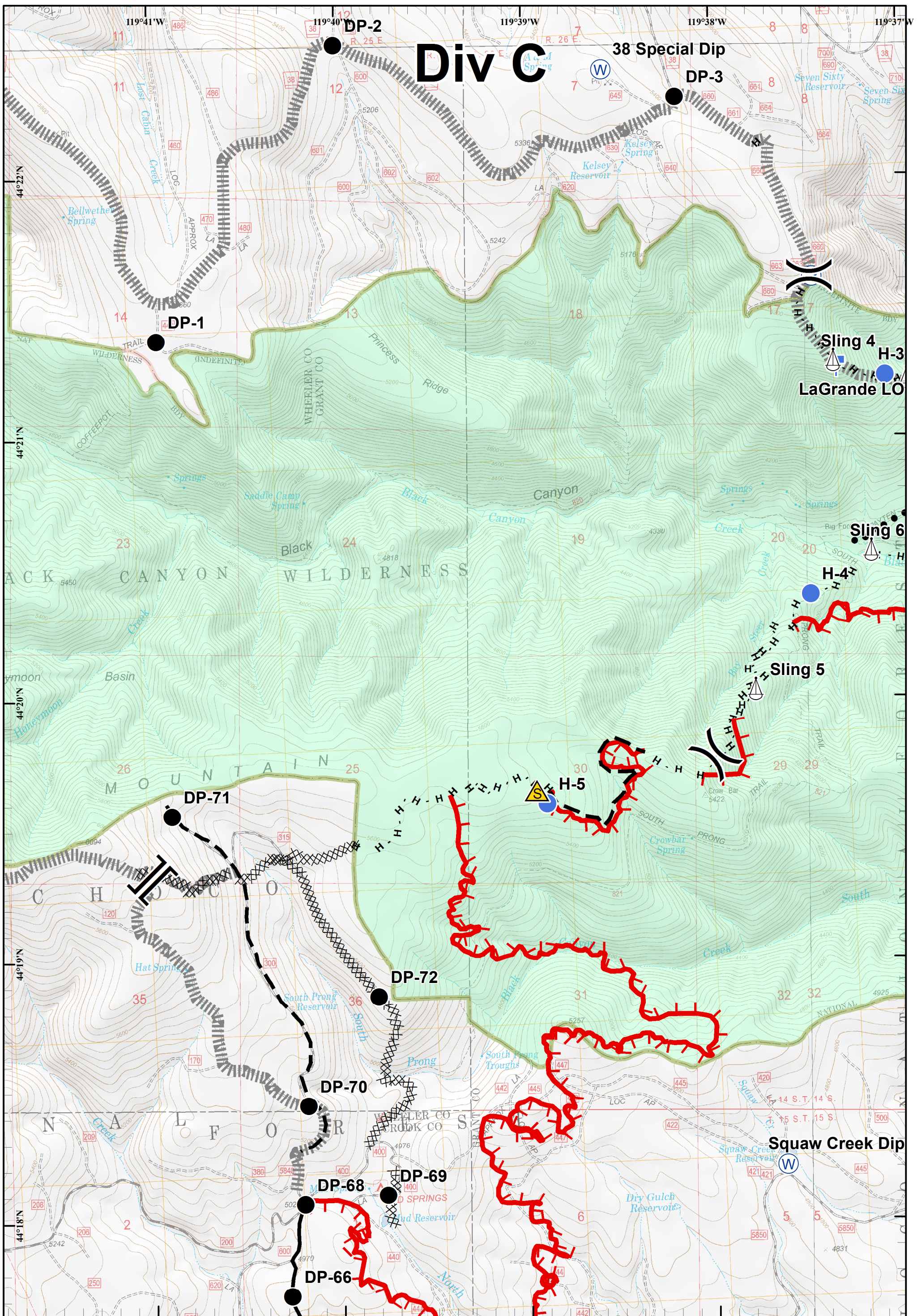


Index
 July 12, 2015
 Day Shift
 Saturday, July 11, 2015 @ 1638 hrs



Corner Creek Fire
 OR-OCF-000297
 IAP Map
 NAD 83
 Approx 29,423 ac
 As of 7/8/2015 @ 2127

- Division
- Branch
- Mobile Weather Unit
- Safety Zone
- Drop Point
- Completed Dozer Line
- Planned Fire Line
- C-Contingency
- USFS



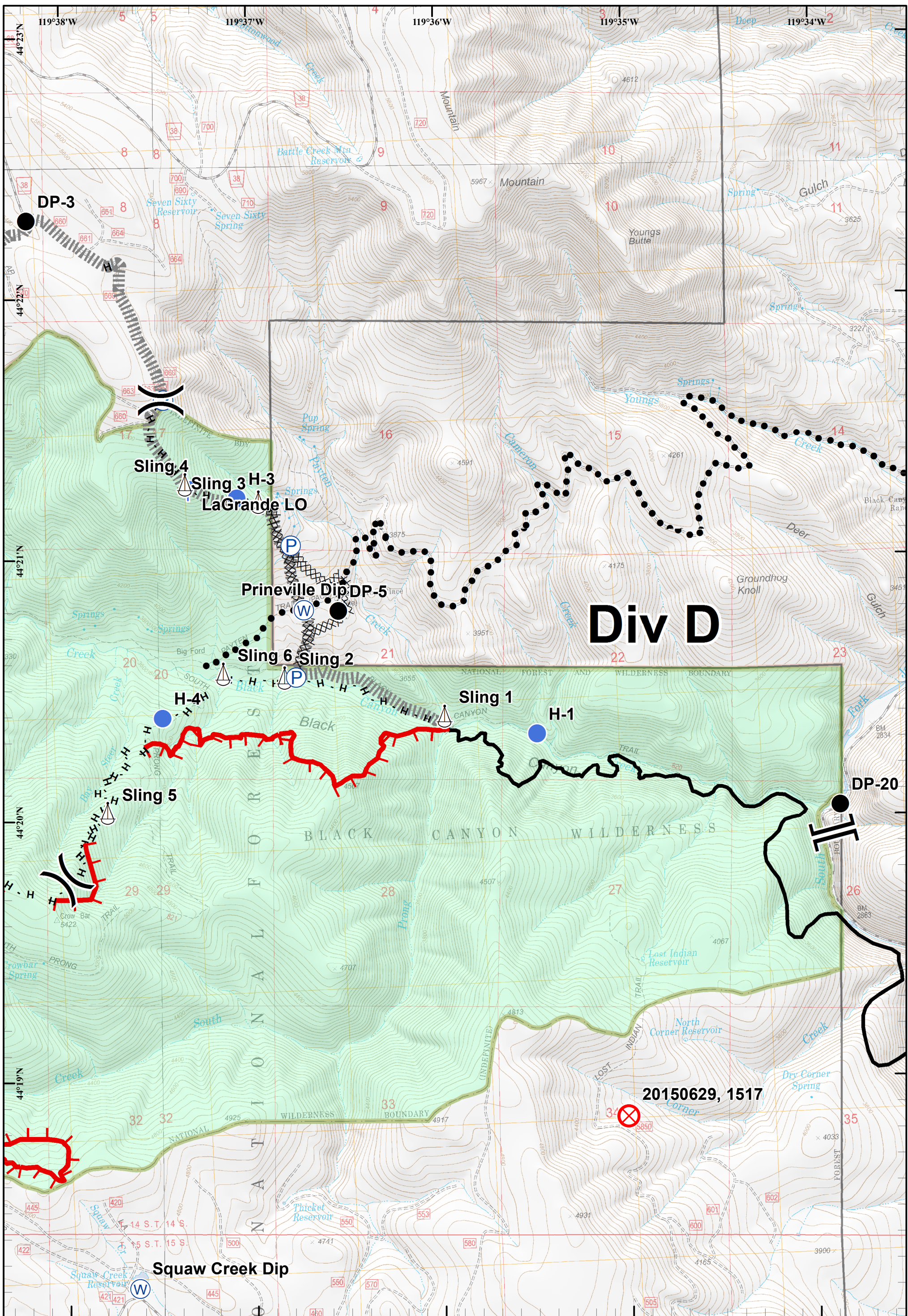
Corner Creek Fire
 OR-OCF-000297
 IAP Map
 NAD 83
 Approx 29,423 ac
 As of 7/8/2015 @ 2127

- | | | | | | |
|--|------------|--|----------------------|--|------------------------|
| | Division | | Water Source | | Planned Fire Line |
| | Branch | | Pump | | Planned Secondary Line |
| | Drop Point | | Safety Zone | | C-Contingency |
| | Helispot | | Completed Dozer Line | | Completed Line |
| | Sling Site | | H - H Hand Line | | |

Miles
 0 0.175 0.35 0.7

Feet
 0 750 1,500 3,000

Page 2 of 10
 July 12, 2015
 Day Shift
 Saturday, July 11, 2015 @ 1639 hrs

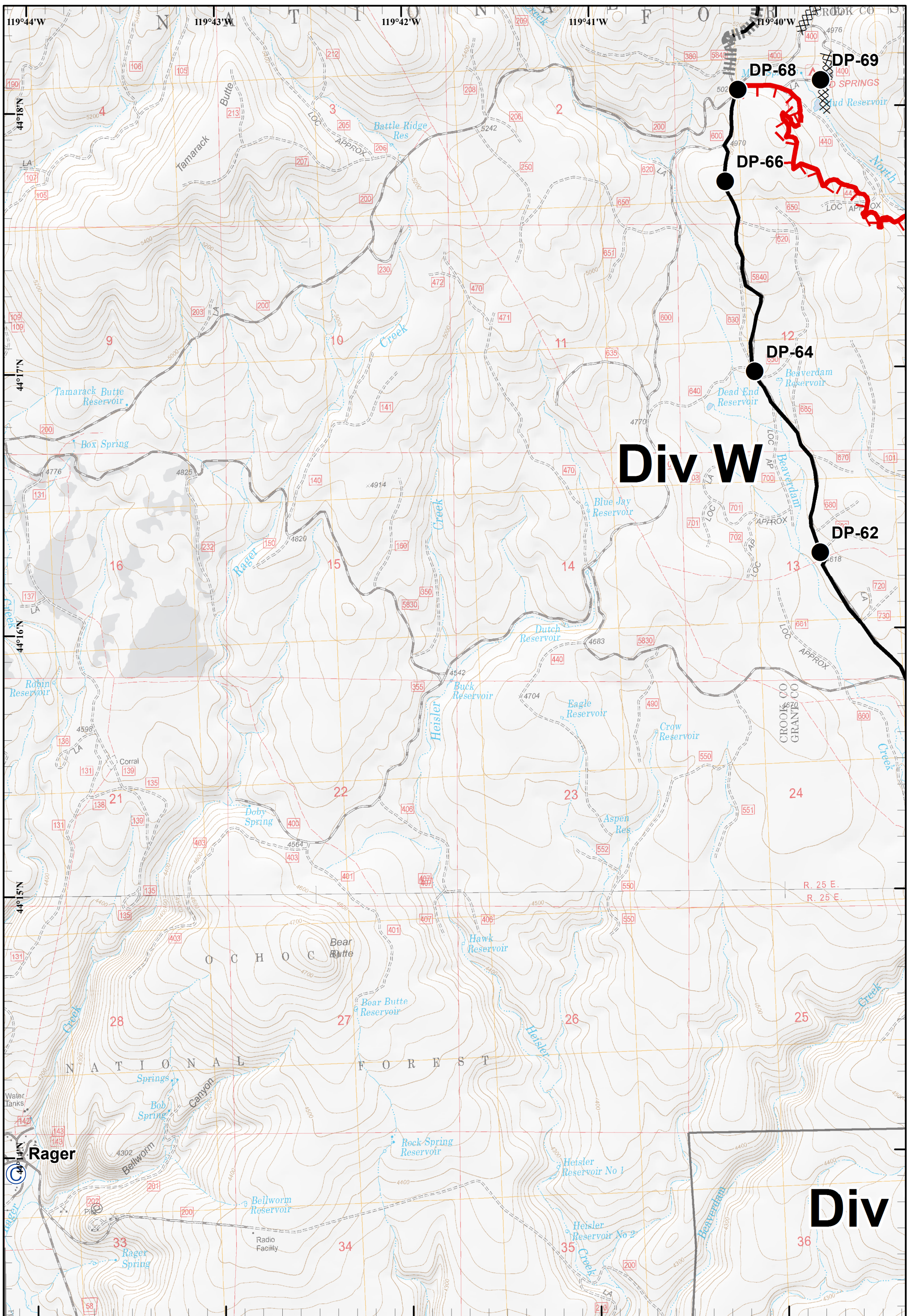


Corner Creek Fire
 OR-OCF-000297
 IAP Map
 NAD 83
 Approx 29,423 ac
 As of 7/8/2015 @ 2127

	Division		Branch		Fire Origin		Sling Site		Completed Line	 Miles 0 0.175 0.35 0.7 Feet 0 750 1,500 3,000	Page 3 of 10 July 12, 2015 Day Shift Saturday, July 11, 2015 @ 1639 hrs
	Drop Point		Water Source		Uncontrolled Fire Edge		C-Contingency		USFS		

Div D

20150629, 1517



Corner Creek Fire
 OR-OCF-000297
 IAP Map
 NAD 83
 Approx 29,423 ac
 As of 7/8/2015 @ 2127

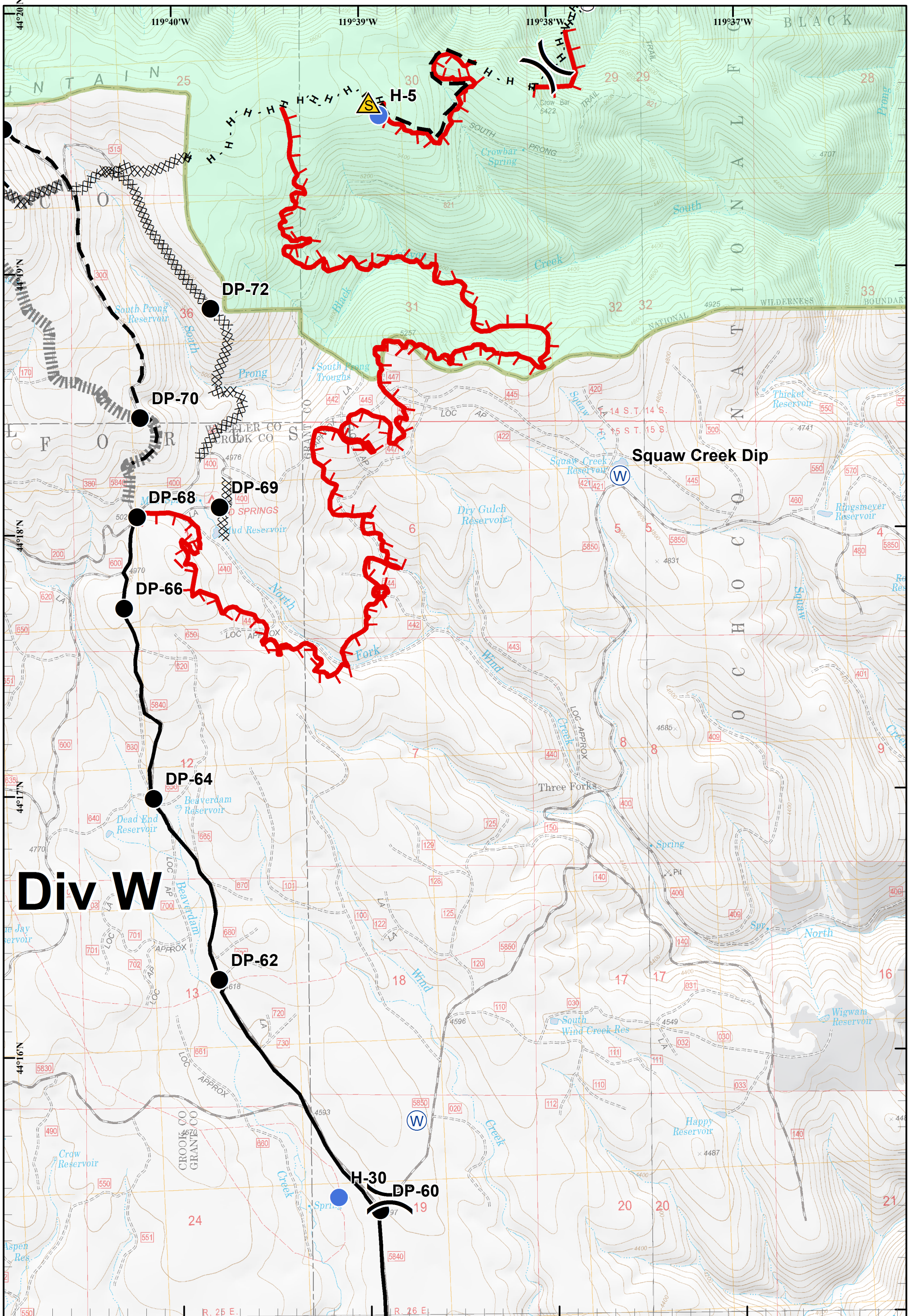
- Camp
- Drop Point
- Uncontrolled Fire Edge
- Completed Dozer Line

- Completed Line
- Planned Fire Line
- C-Contingency

Page 4 of 10
 July 12, 2015
 Day Shift
 Saturday, July 11, 2015 @ 1639 hrs

Miles
 0 0.175 0.35 0.7

Feet
 0 750 1,500 3,000



Corner Creek Fire
 OR-OCF-000297
 IAP Map
 NAD 83
 Approx 29,423 ac
 As of 7/8/2015 @ 2127

- Division
- Helispot
- Safety Zone
- Sling Site
- Water Source
- Uncontrolled Fire Edge
- Completed Dozer Line
- Completed Line
- H - H Hand Line
- Planned Fire Line
- C-Contingency
- USFS

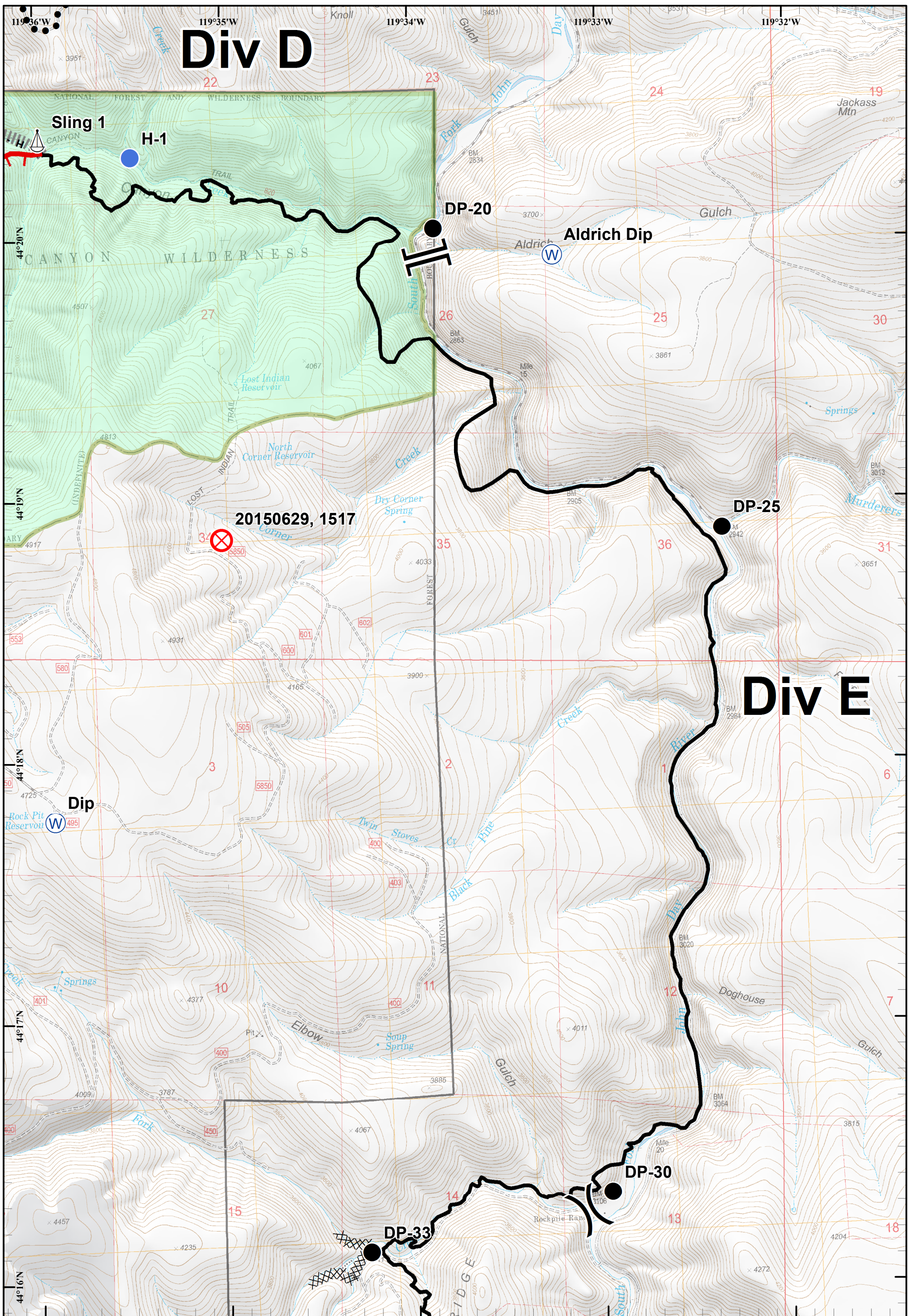
Page 5 of 10

July 12, 2015
 Day Shift

Saturday, July 11, 2015 @ 1640 hrs

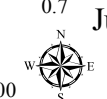
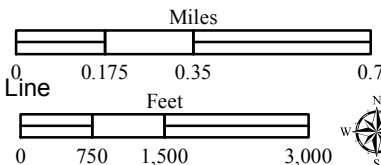
Miles

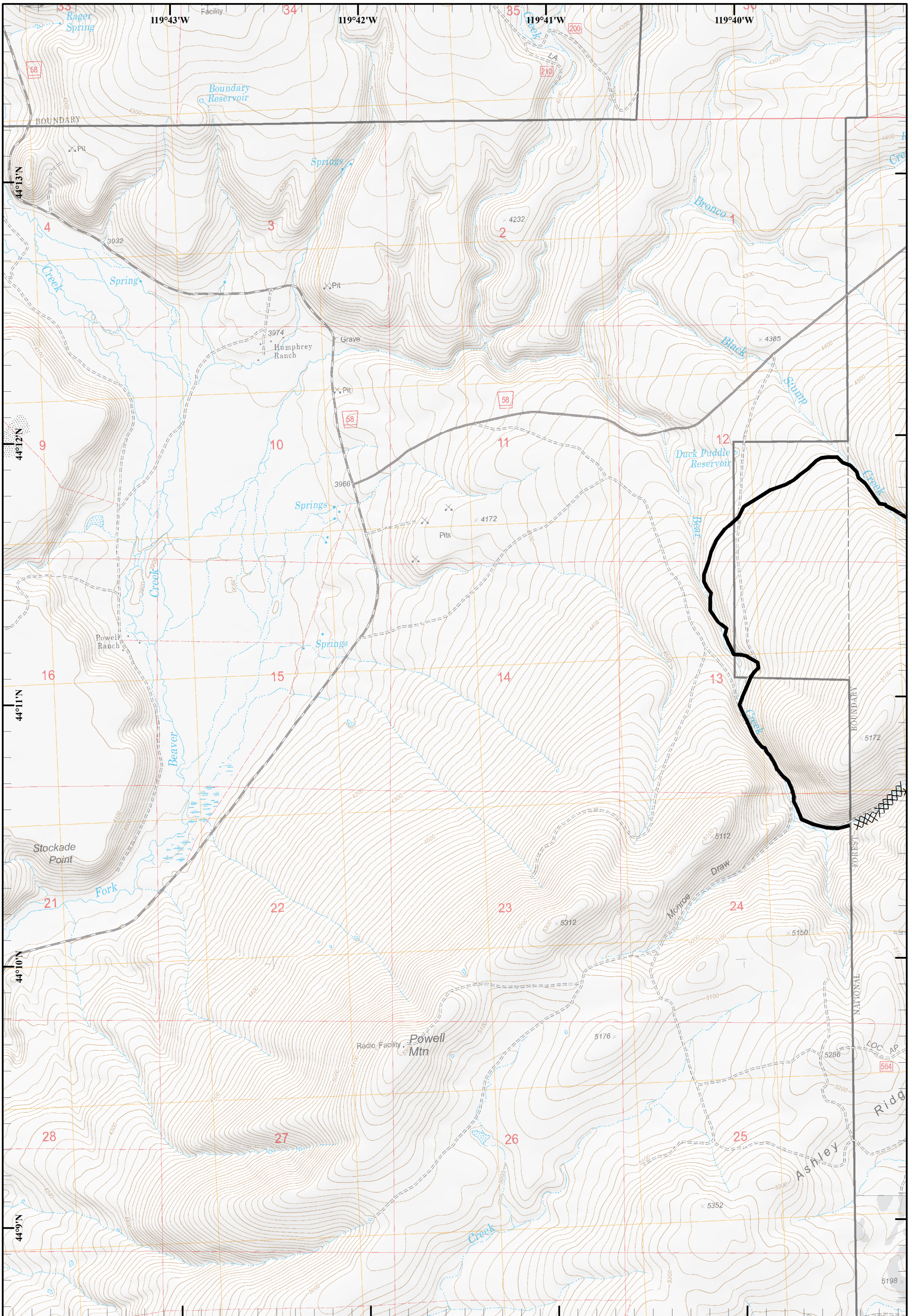
Feet



Corner Creek Fire
 OR-OCF-000297
 IAP Map
 NAD 83
 Approx 29,423 ac
 As of 7/8/2015 @ 2127

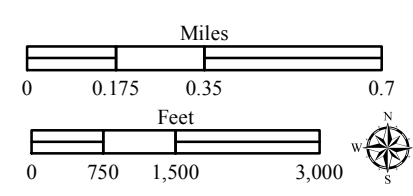
-  Division
-  Branch
-  Fire Origin
-  Water Source
-  Helispot
-  Uncontrolled Fire Edge
-  Completed Dozer Line
-  Drop Point
-  Sling Site
-  Completed Line
-  H Hand Line
-  Planned Secondary Line





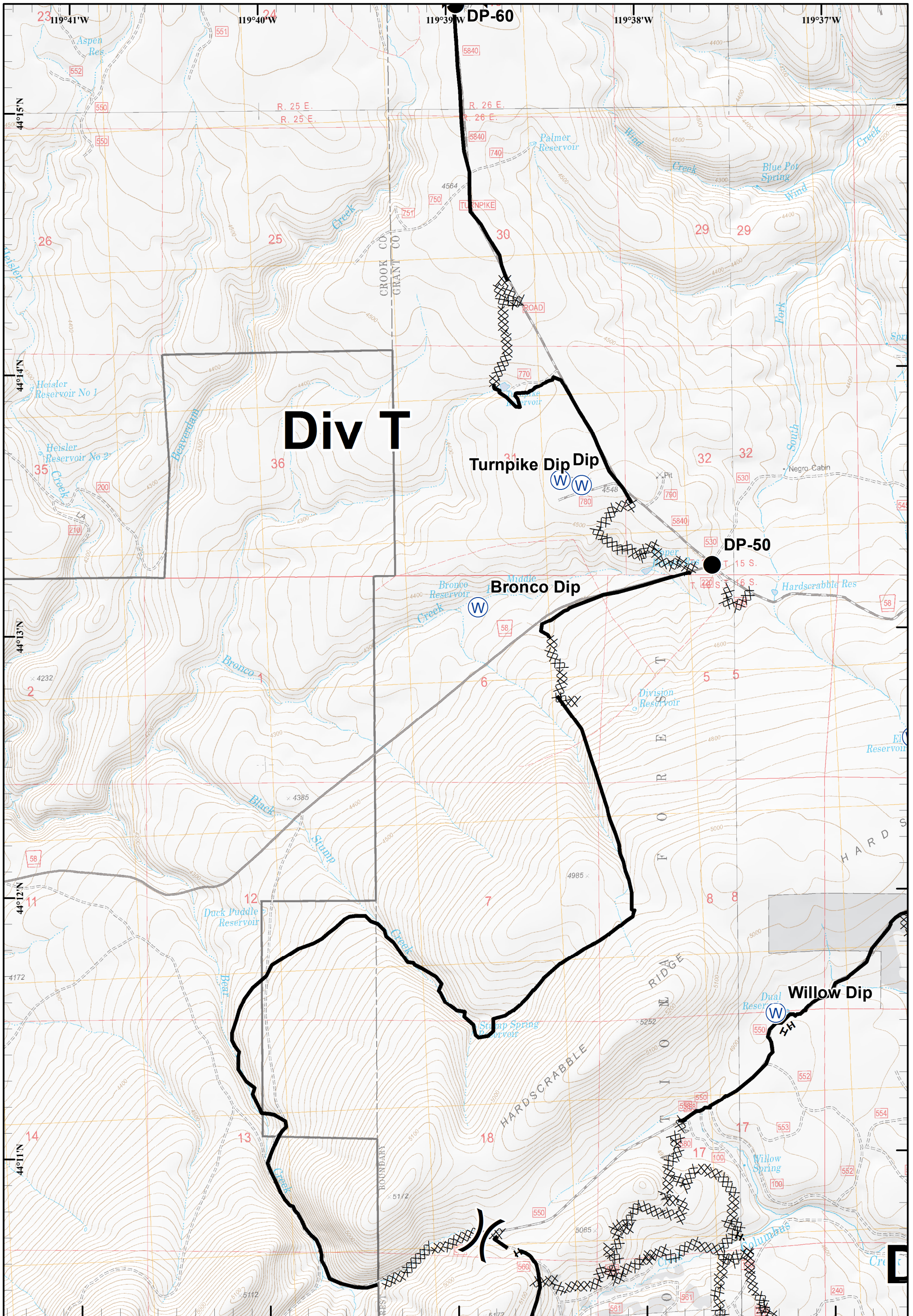
Corner Creek Fire
 OR-OCF-000297
 IAP Map
 NAD 83
 Approx 29,423 ac
 As of 7/8/2015 @ 2127

XXXXXX Completed Dozer Line
 ——— Completed Line






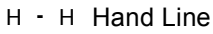


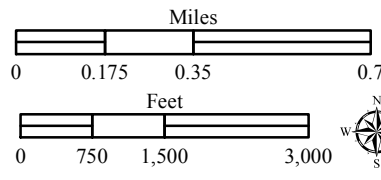
Page 7 of 10
 July 12, 2015
 Day Shift

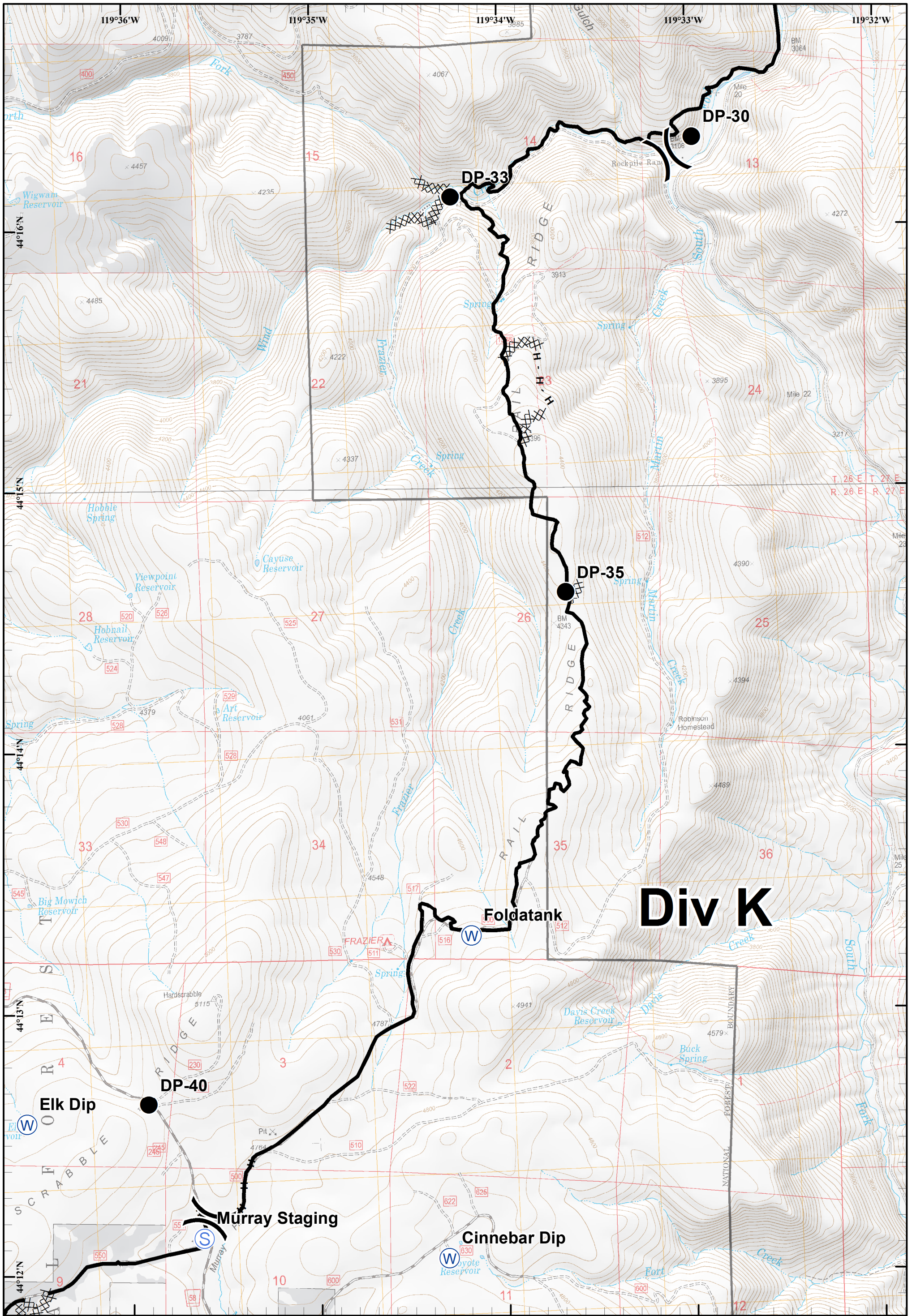
Saturday, July 11, 2015 @ 1640 hrs







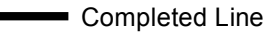
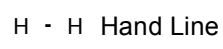
Corner Creek Fire
 OR-OCF-000297
 IAP Map
 NAD 83
 Approx 29,423 ac
 As of 7/8/2015 @ 2127

-  Division
-  Water Source
-  Completed Dozer Line
-  Completed Line
-  Drop Point
-  Hand Line





Corner Creek Fire
 OR-OCF-000297
 IAP Map
 NAD 83
 Approx 29,423 ac
 As of 7/8/2015 @ 2127

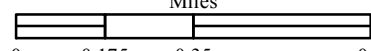
-  Division
-  Staging Area
-  Water Source
-  Completed Dozer Line
-  Completed Line
-  H - H Hand Line

Page 9 of 10

July 12, 2015
Day Shift

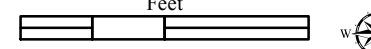
Saturday, July 11, 2015 @ 1641 hrs

Miles




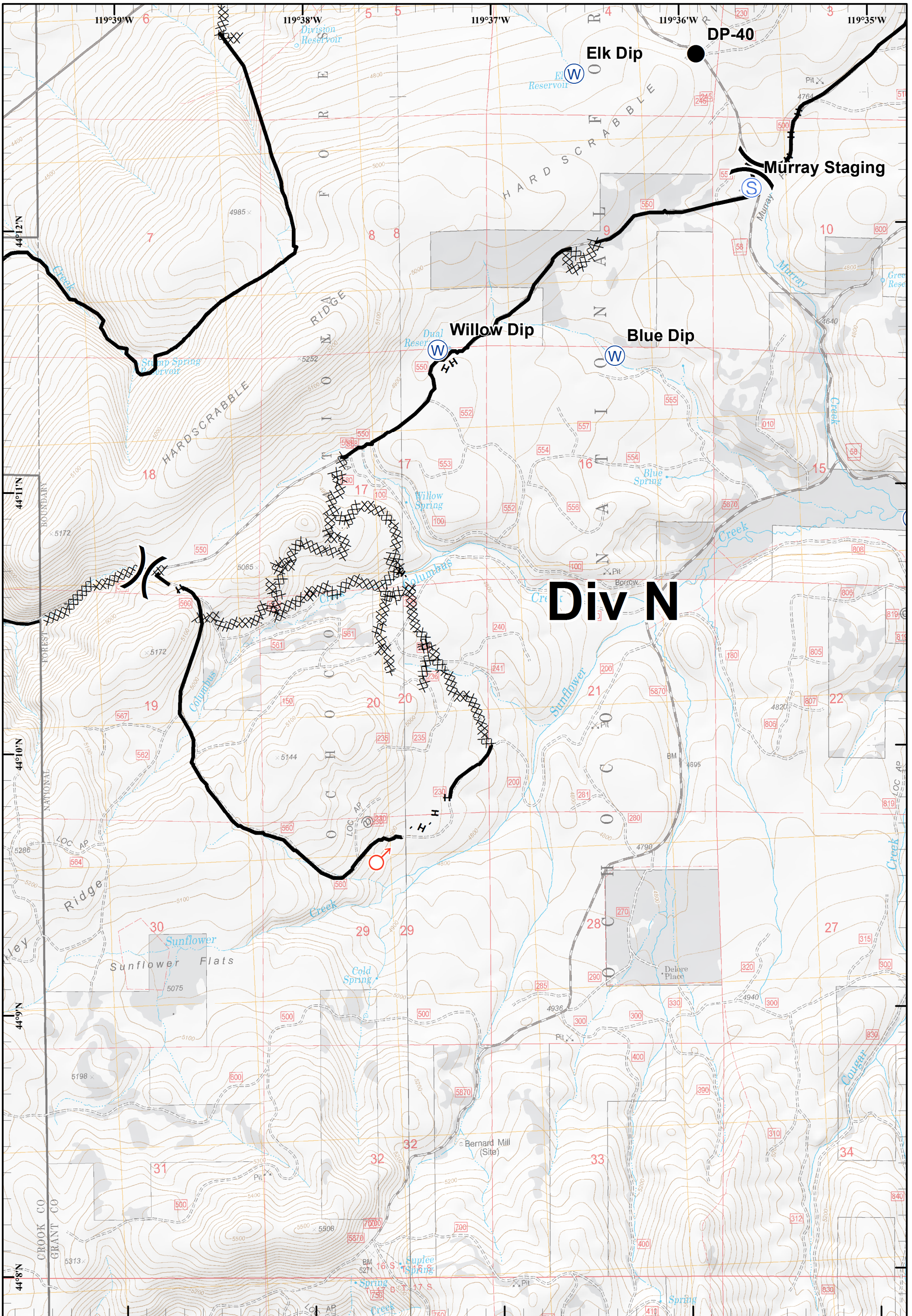
0 0.175 0.35 0.7

Feet





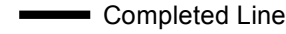
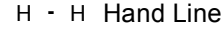




0 750 1,500 3,000





Corner Creek Fire
 OR-OCF-000297
 IAP Map
 NAD 83
 Approx 29,423 ac
 As of 7/8/2015 @ 2127

-  Division
-  Spot Fire
-  Completed Dozer Line
-  Staging Area
-  Completed Line
-  H - H Hand Line
-  Drop Point
-  Water Source

