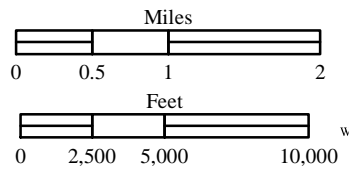


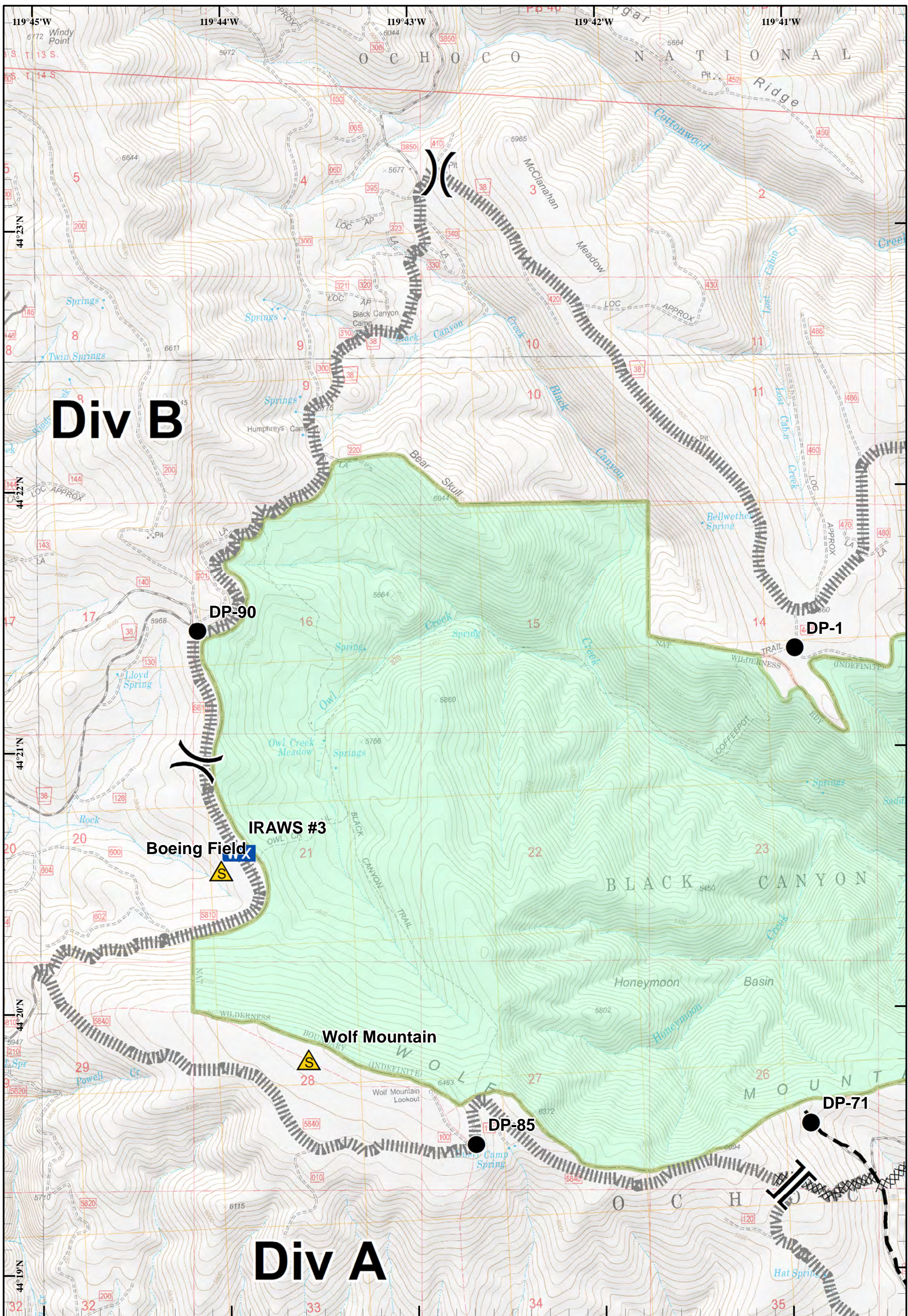
Corner Creek Fire
 OR-OCF-000297
 IAP Map
 NAD 83
 Approx 29,423 ac
 As of 7/8/2015 @ 2127

 Division
  Branch



Index
 July 12, 2015
 Day Shift

Saturday, July 11, 2015 @ 1638 hrs



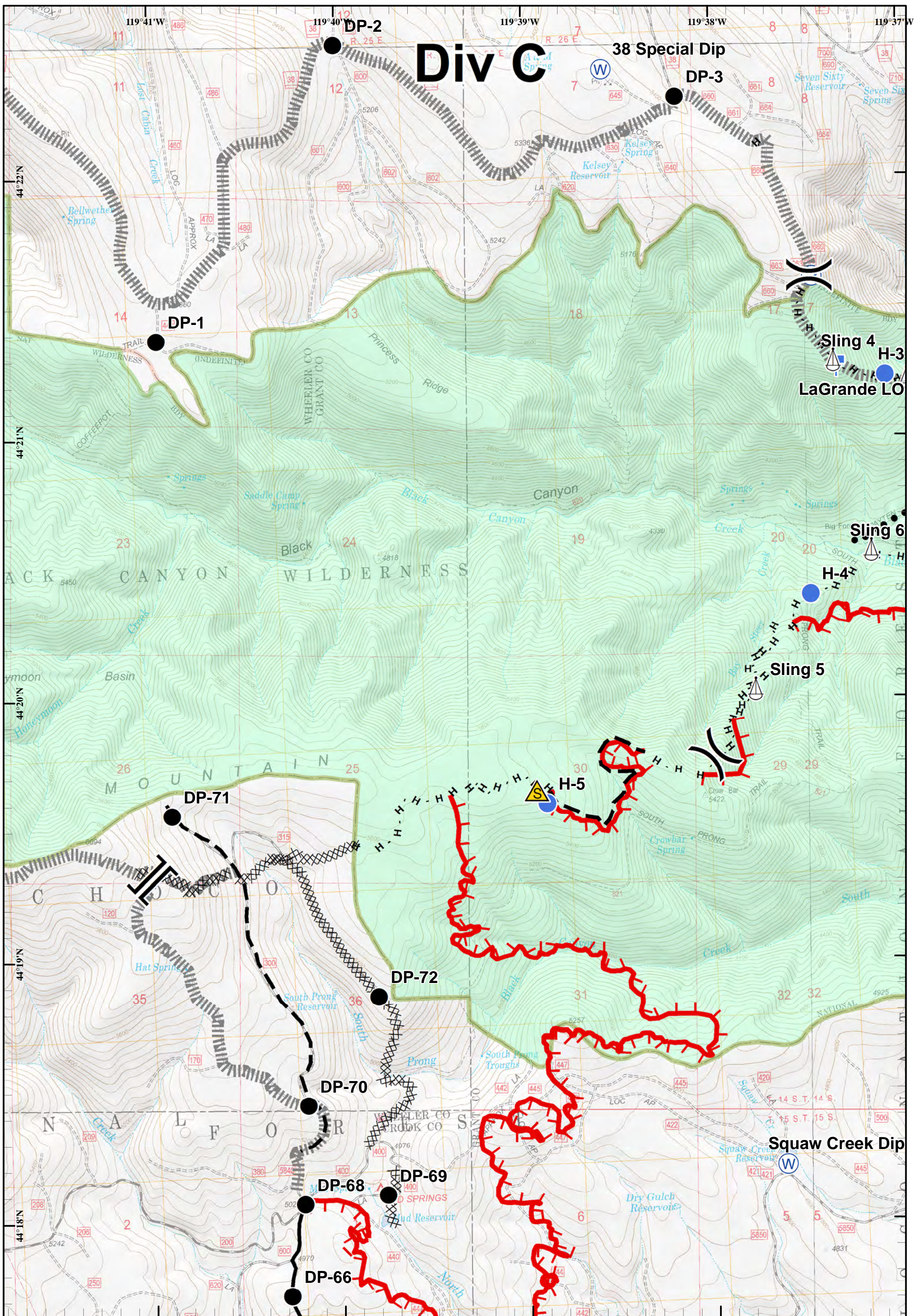
Corner Creek Fire
 OR-OCF-000297
 IAP Map
 NAD 83
 Approx 29,423 ac
 As of 7/8/2015 @ 2127

- Division
- Branch
- Mobile Weather Unit
- Safety Zone
- Drop Point
- Completed Dozer Line
- Planned Fire Line
- C-Contingency
- USFS

Page 1 of 10
 July 12, 2015
 Day Shift
 Saturday, July 11, 2015 @ 1638 hrs

Miles
 0 0.175 0.35 0.7

Feet
 0 750 1,500 3,000



Corner Creek Fire
 OR-OCF-000297
 IAP Map
 NAD 83
 Approx 29,423 ac
 As of 7/8/2015 @ 2127

- | | | | | | | | | | |
|--|------------|--|------------|--|-----------------|--|----------------------|--|------------------------|
| | Division | | Branch | | Lookout | | Water Source | | Planned Fire Line |
| | Drop Point | | Pump | | Safety Zone | | Completed Dozer Line | | Planned Secondary Line |
| | Helispot | | Sling Site | | Completed Line | | C-Contingency | | Uncontrolled Fire Edge |
| | | | | | H - H Hand Line | | | | |

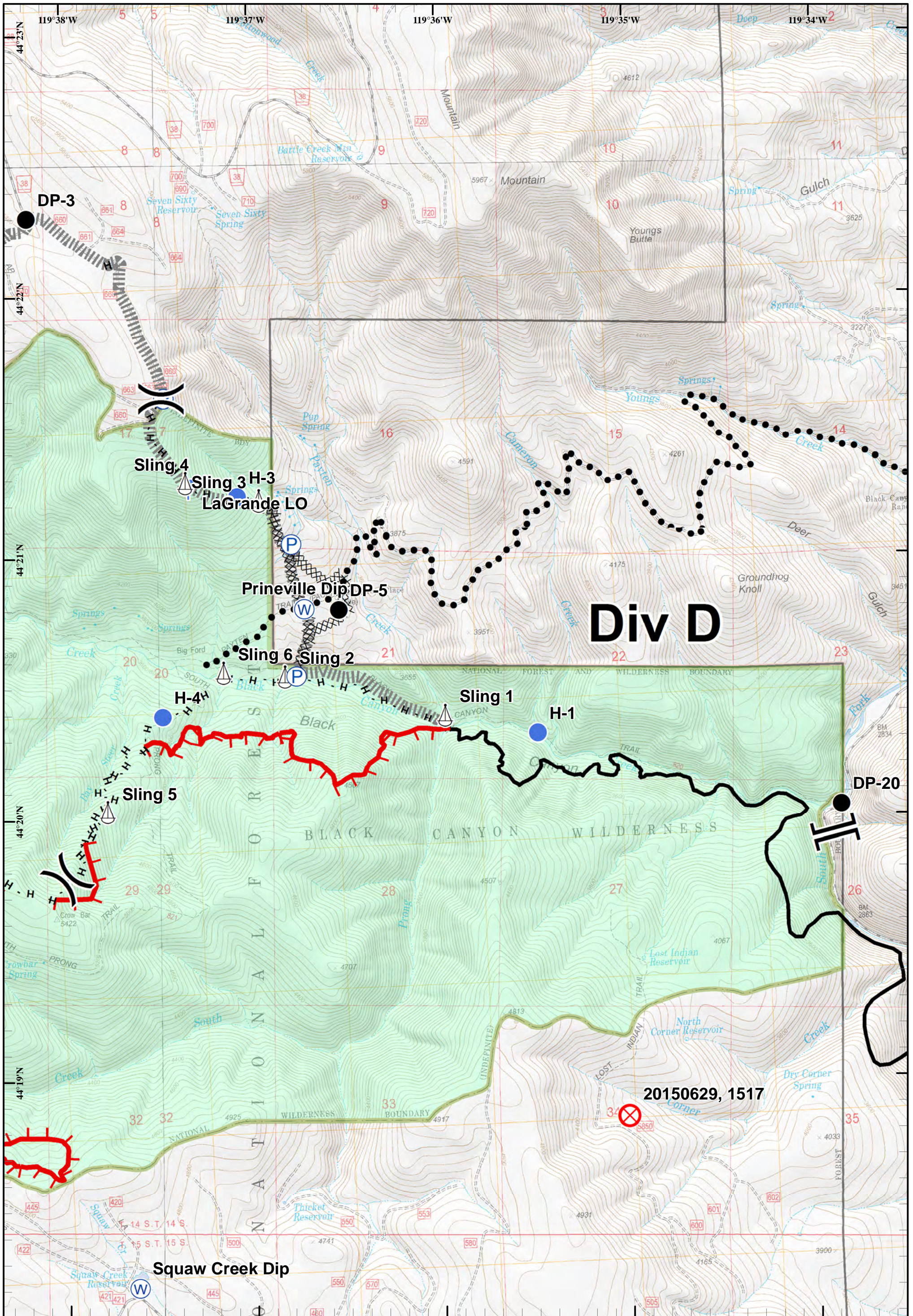
Page 2 of 10

July 12, 2015
 Day Shift

Saturday, July 11, 2015 @ 1639 hrs

Miles
 0 0.175 0.35 0.7

Feet
 0 750 1,500 3,000

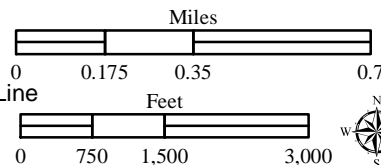


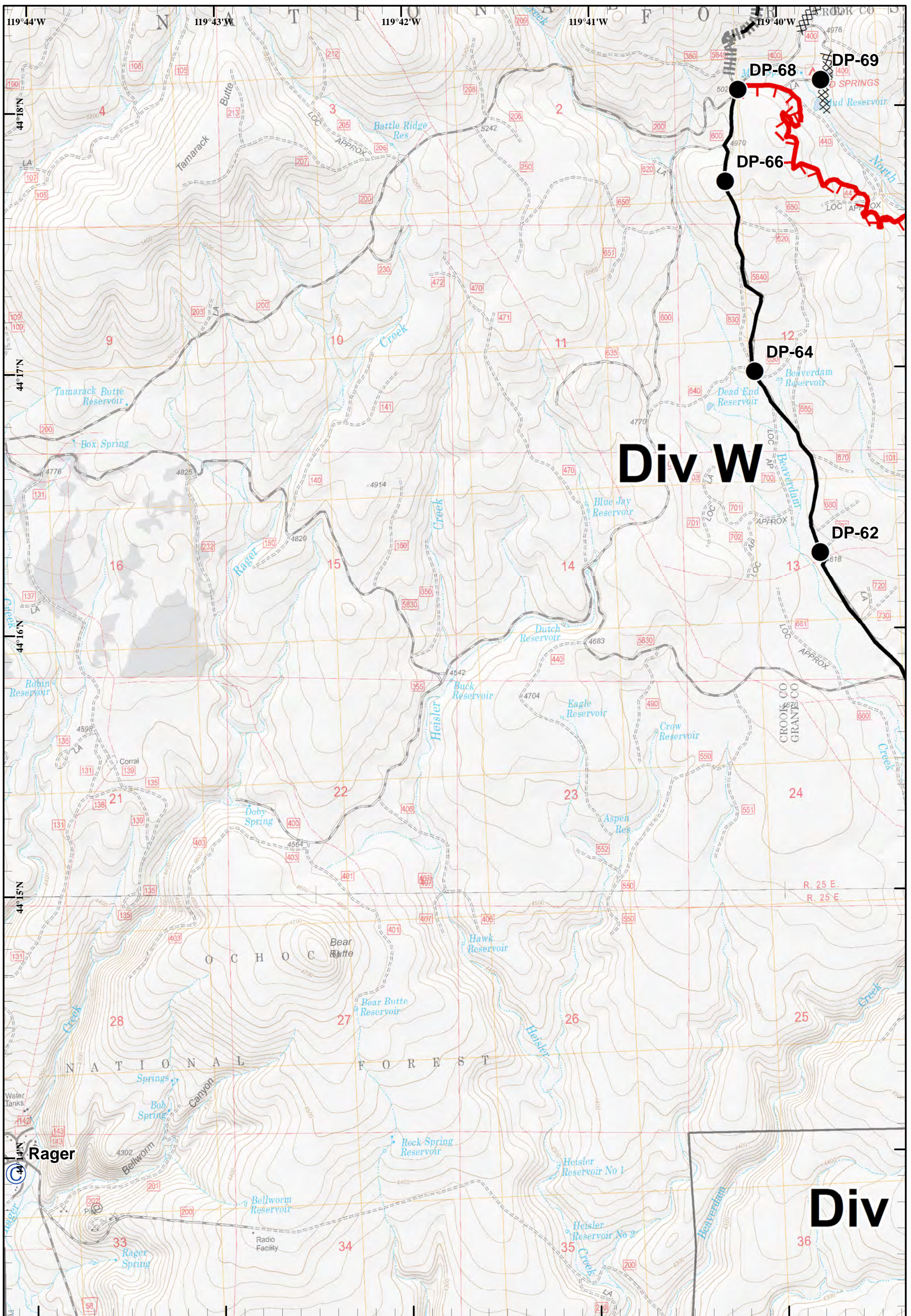
Div D

20150629, 1517





Corner Creek Fire
 OR-OCF-000297
 IAP Map
 NAD 83
 Approx 29,423 ac
 As of 7/8/2015 @ 2127




-) (Division
-] [Branch
- Drop Point
- ⊗ Fire Origin
- Sling Site
- ⊕ Water Source
- ⊗ Helispot
- ⊕ Uncontrolled Fire Edge
- ⊗ Pump
- ⊗ Completed Dozer Line
- Completed Line
- H - H Hand Line
- Planned Secondary Line
- ||||| C-Contingency
- ⊕ USFS





Corner Creek Fire
 OR-OCF-000297
 IAP Map
 NAD 83
 Approx 29,423 ac
 As of 7/8/2015 @ 2127

-  Camp
-  Drop Point
-  Uncontrolled Fire Edge
-  Completed Dozer Line

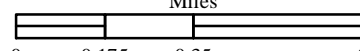
-  Completed Line
-  Planned Fire Line
-  C-Contingency

Page 4 of 10

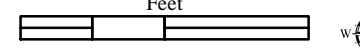
July 12, 2015
Day Shift

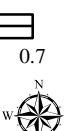
Saturday, July 11, 2015 @ 1639 hrs

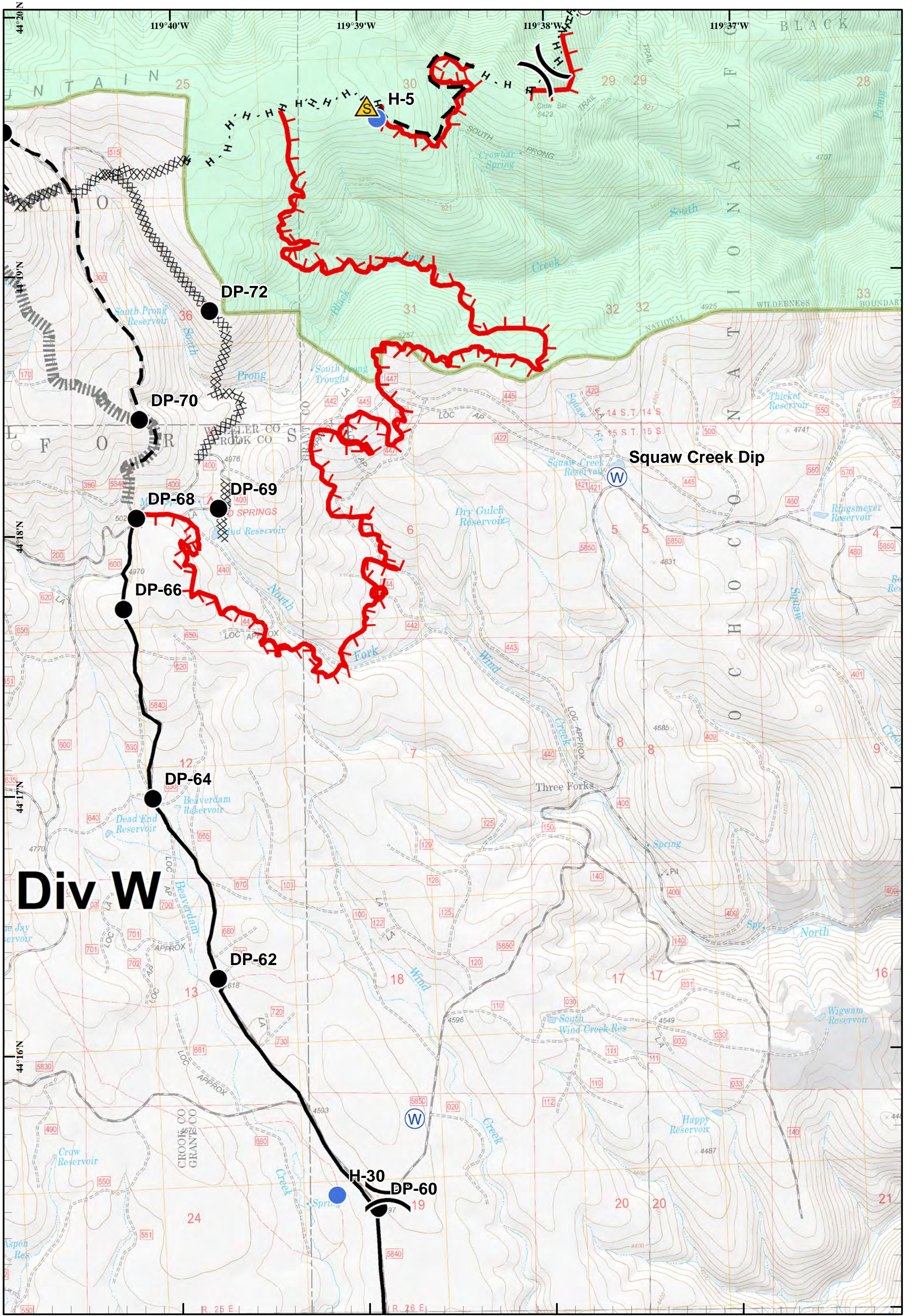
Miles



Feet







Corner Creek Fire
 OR-OCF-000297
 IAP Map
 NAD 83
 Approx 29,423 ac
 As of 7/8/2015 @ 2127

- Division
- Helispot
- Safety Zone
- Sling Site
- Water Source
- Uncontrolled Fire Edge
- Completed Dozer Line
- Completed Line
- H - H Hand Line
- Planned Fire Line
- C-Contingency
- USFS

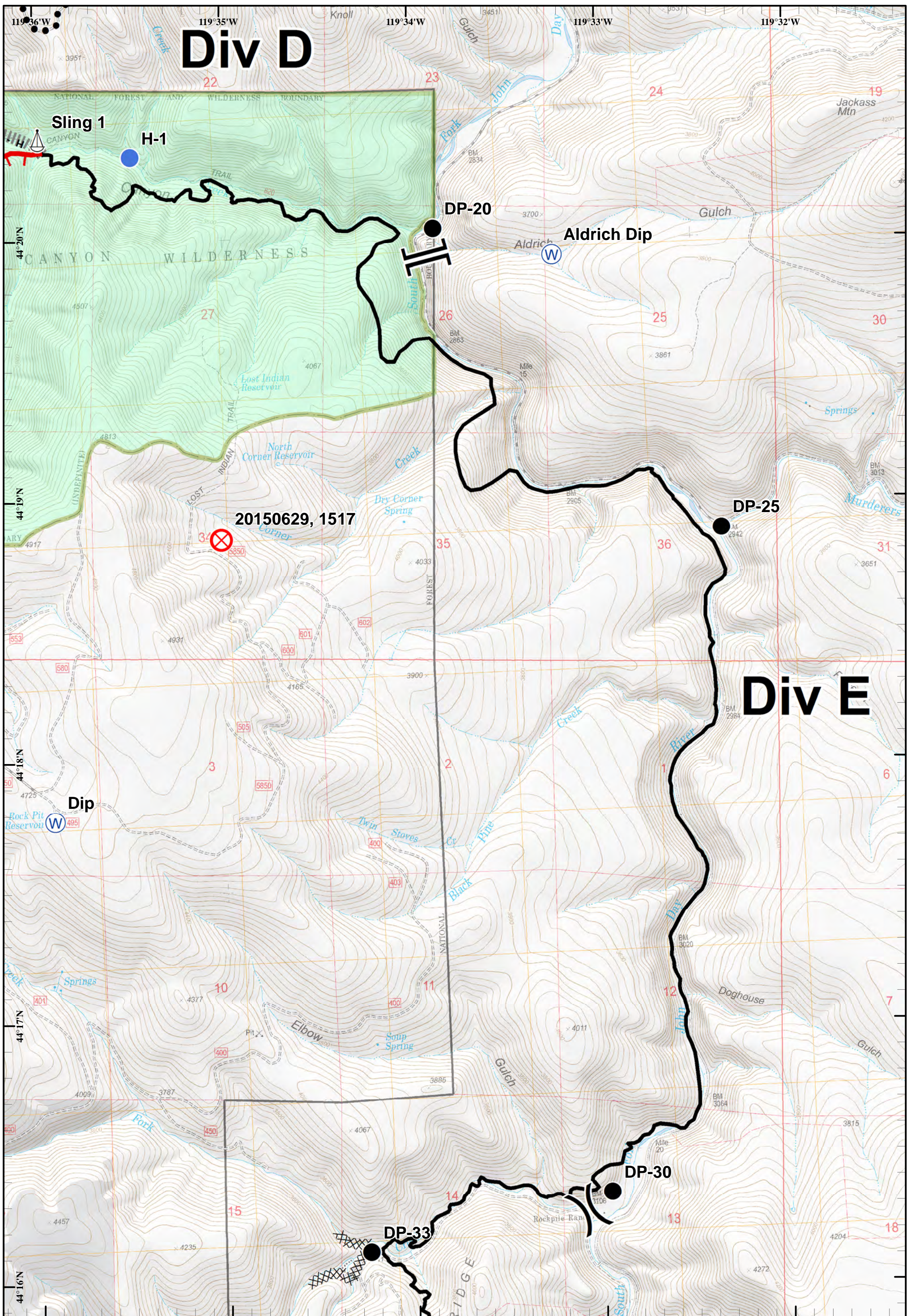
Page 5 of 10

July 12, 2015
Day Shift

Saturday, July 11, 2015 @ 1640 hrs

Miles

Feet



Corner Creek Fire
 OR-OCF-000297
 IAP Map
 NAD 83
 Approx 29,423 ac
 As of 7/8/2015 @ 2127

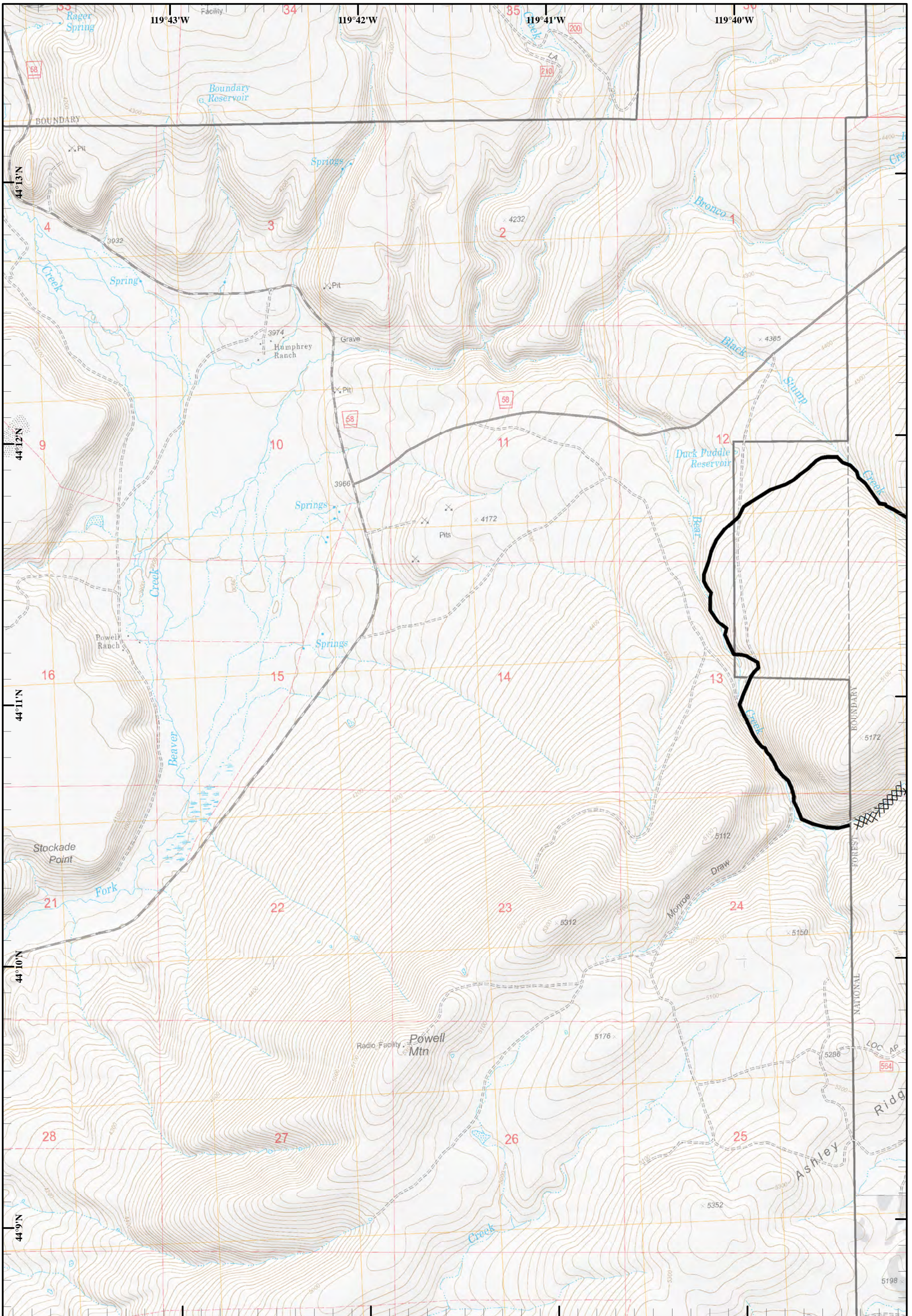
	Division		Branch		Fire Origin		Water Source		H · H Hand Line
	Drop Point		Helispot		Uncontrolled Fire Edge		Completed Dozer Line		Planned Secondary Line
	Sling Site		Completed Line						

Page 6 of 10

July 12, 2015
 Day Shift

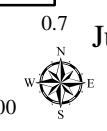
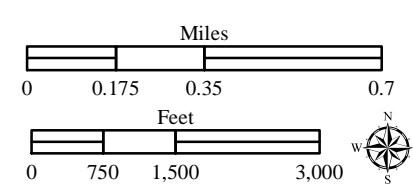
Saturday, July 11, 2015 @ 1640 hrs

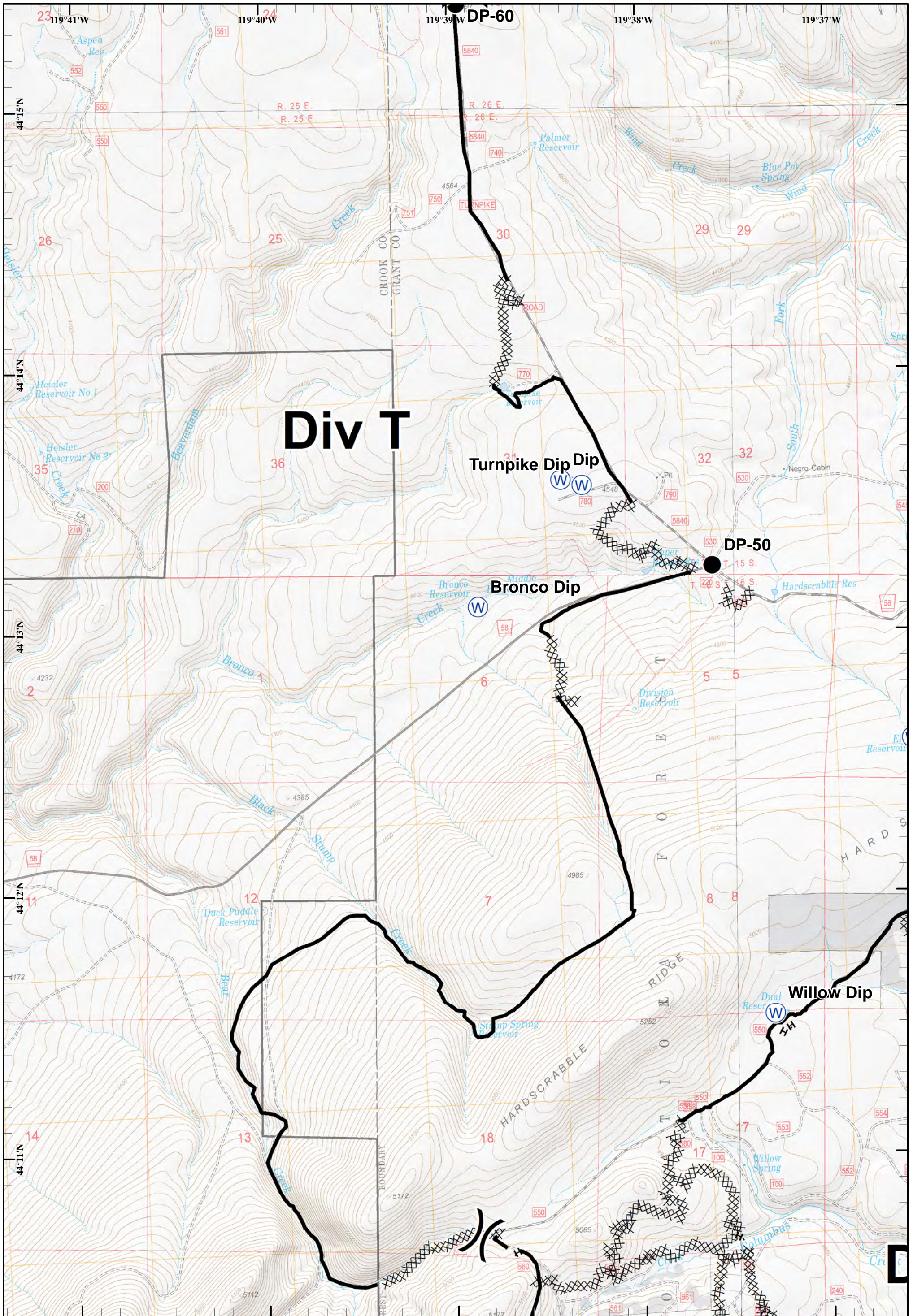
Miles: 0, 0.175, 0.35, 0.7
 Feet: 0, 750, 1,500, 3,000



Corner Creek Fire
 OR-OCF-000297
 IAP Map
 NAD 83
 Approx 29,423 ac
 As of 7/8/2015 @ 2127

XXXXXX Completed Dozer Line
 ——— Completed Line



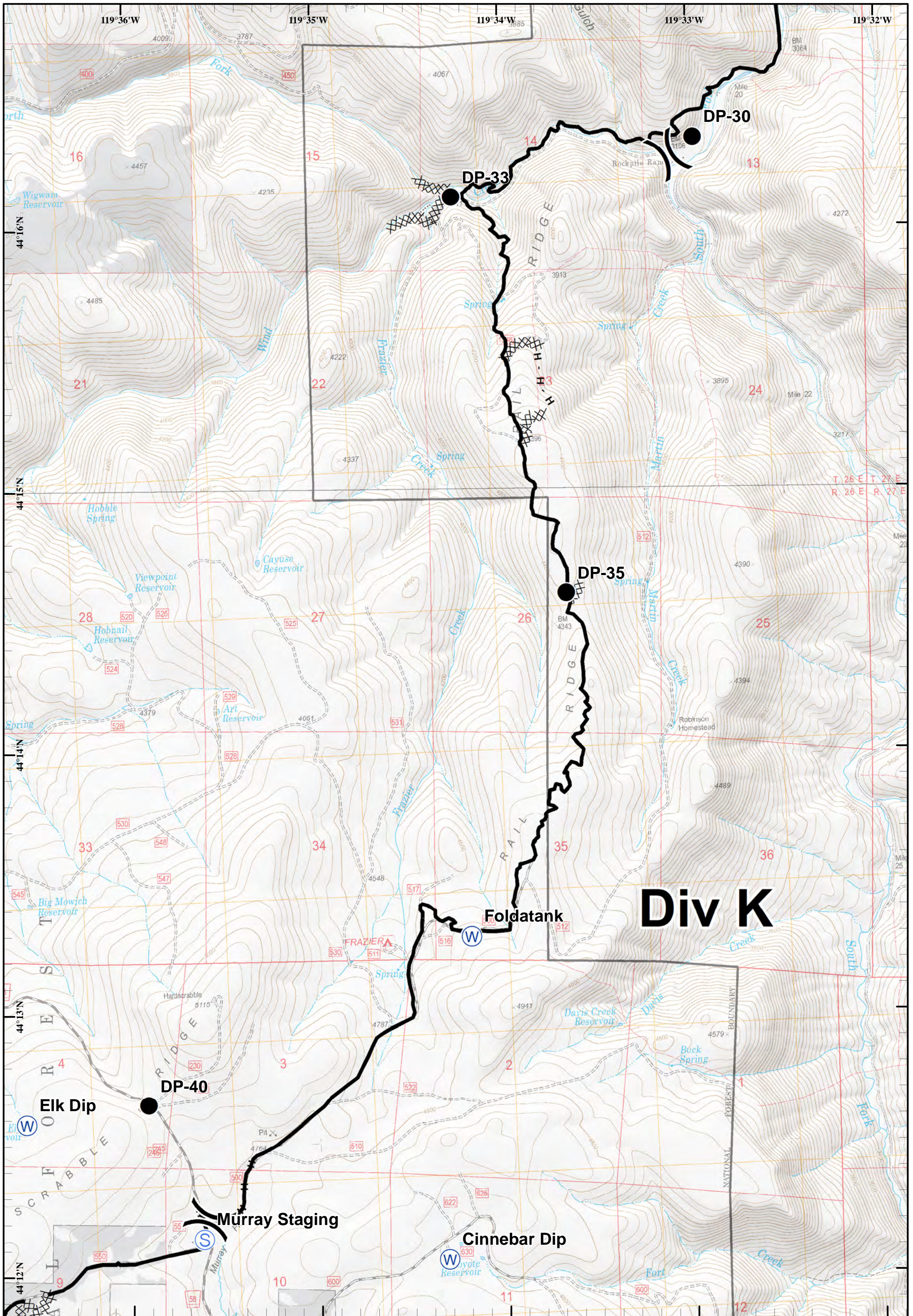


Corner Creek Fire
 OR-OCF-000297
 IAP Map
 NAD 83
 Approx 29,423 ac
 As of 7/8/2015 @ 2127

- Division
- Water Source
- Completed Dozer Line
- Completed Line
- Drop Point
- Hand Line

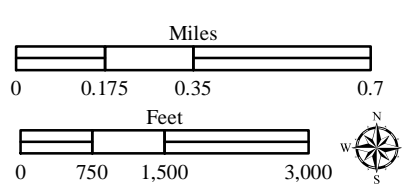
Miles
 0 0.175 0.35 0.7
 Feet
 0 750 1,500 3,000

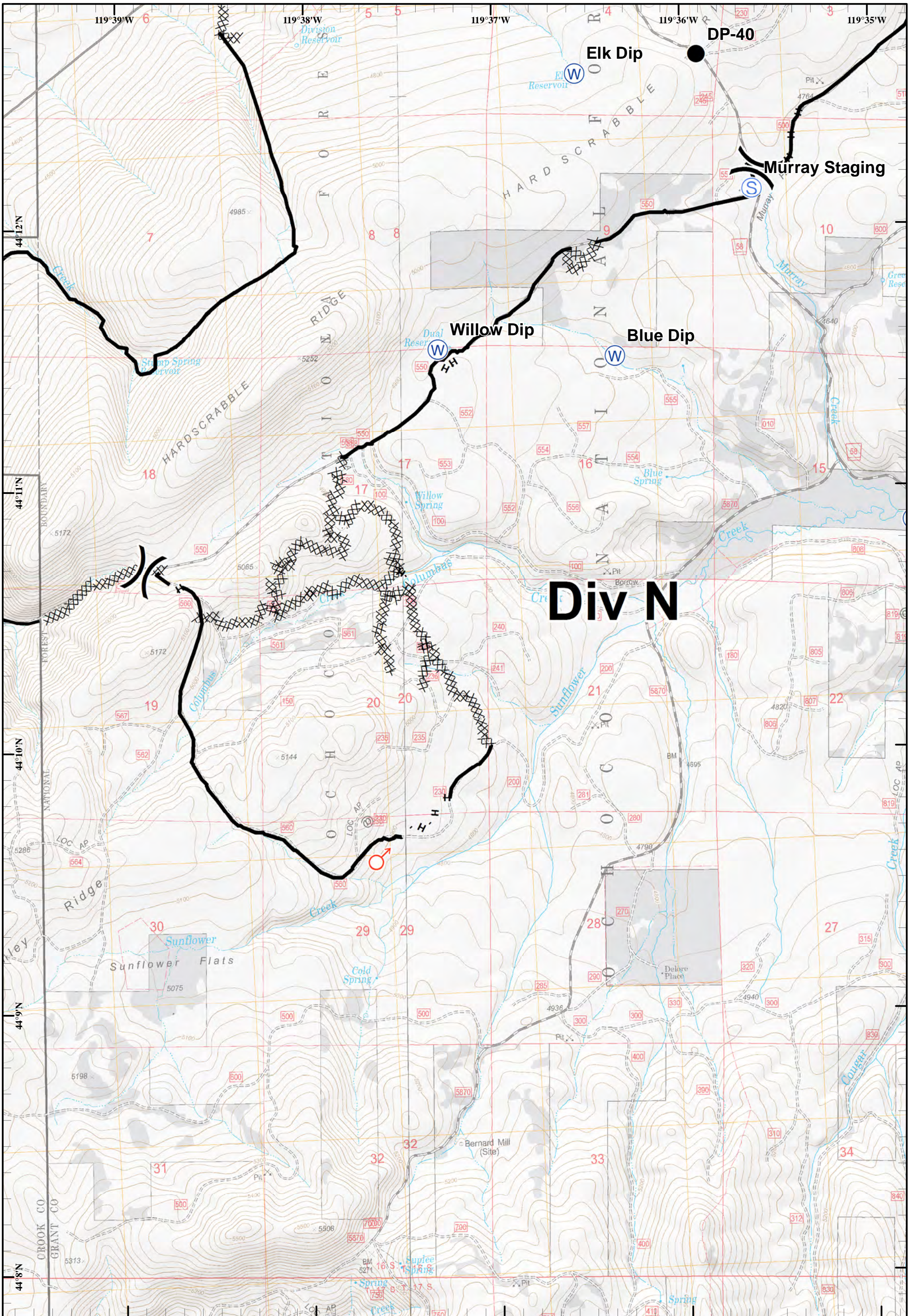
Page 8 of 10
 July 12, 2015
 Day Shift
 Saturday, July 11, 2015 @ 1641 hrs



Corner Creek Fire
 OR-OCF-000297
 IAP Map
 NAD 83
 Approx 29,423 ac
 As of 7/8/2015 @ 2127

- Division
- Staging Area
- Water Source
- Completed Dozer Line
- Completed Line
- H - H Hand Line
- Drop Point





Corner Creek Fire
 OR-OCF-000297
 IAP Map
 NAD 83
 Approx 29,423 ac
 As of 7/8/2015 @ 2127

- Division
- Spot Fire
- Completed Dozer Line
- Completed Line
- Staging Area
- Hand Line
- Water Source

