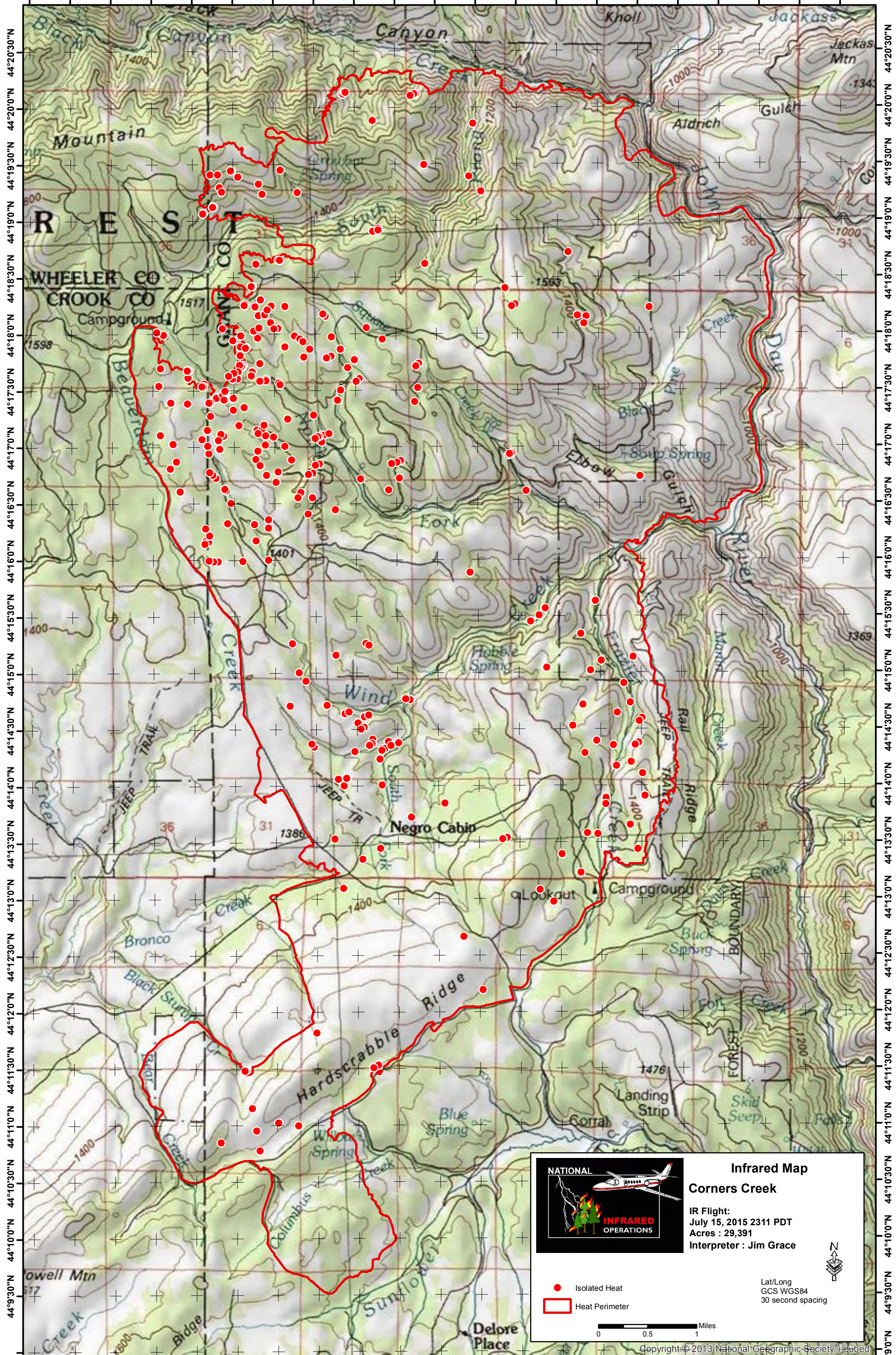


119°41'30"W 119°40'30"W 119°39'30"W 119°38'30"W 119°37'30"W 119°36'30"W 119°35'30"W 119°34'30"W 119°33'30"W 119°32'30"W 119°31'30"W



119°41'30"W 119°40'30"W 119°39'30"W 119°38'30"W 119°37'30"W 119°36'30"W 119°35'30"W 119°34'30"W 119°33'30"W 119°32'30"W 119°31'30"W

NATIONAL
INFRARED
OPERATIONS

Infrared Map
Corners Creek

IR Flight:
July 15, 2015 2311 PDT
Acres : 29,391
Interpreter : Jim Grace

● Isolated Heat
▭ Heat Perimeter

Lat/Long
GCS WGS84
30 second spacing

0 0.5 1 Miles

Copyright © 2013 National Geographic Society, i-ubed

119°41'30"W 119°40'30"W 119°39'30"W 119°38'30"W 119°37'30"W 119°36'30"W 119°35'30"W 119°34'30"W 119°33'30"W 119°32'30"W 119°31'30"W