

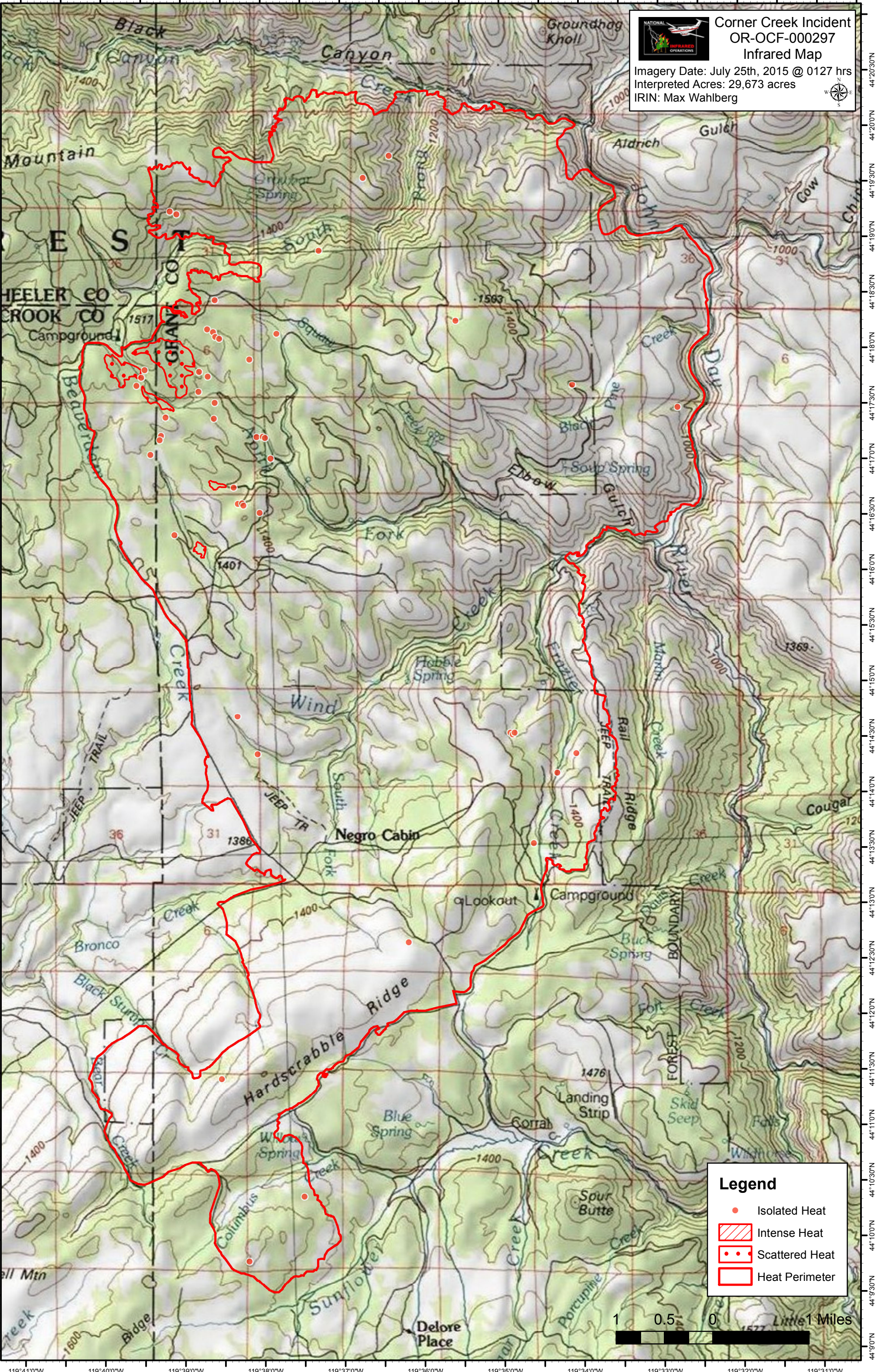


119°41'0"W 119°39'30"W 119°38'30"W 119°37'30"W 119°36'30"W 119°35'30"W 119°34'30"W 119°33'30"W 119°32'30"W 119°31'30"W 119°30'30"W

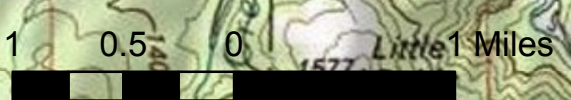
44°21'0"N 44°20'30"N 44°20'00"N 44°19'30"N 44°19'00"N 44°18'30"N 44°18'00"N 44°17'30"N 44°17'00"N 44°16'30"N 44°16'00"N 44°15'30"N 44°15'00"N 44°14'30"N 44°14'00"N 44°13'30"N 44°13'00"N 44°12'30"N 44°12'00"N 44°11'30"N 44°11'00"N 44°10'30"N 44°10'00"N 44°9'30"N 44°9'00"N

Corner Creek Incident
OR-OCF-000297
Infrared Map
 Imagery Date: July 25th, 2015 @ 0127 hrs
 Interpreted Acres: 29,673 acres
 IRIN: Max Wahlberg

Legend

- Isolated Heat
- Intense Heat
- Scattered Heat
- Heat Perimeter



119°41'0"W 119°40'0"W 119°39'0"W 119°38'0"W 119°37'0"W 119°36'0"W 119°35'0"W 119°34'0"W 119°33'0"W 119°32'0"W 119°31'0"W