

**DRY GULCH
OR972S-026
Transition
IAP Index Map**

- Legend**
- IAP Page Index
 - Drop Point
 - Incident Command Post
 - ODF Forest Protection District

ODF GIS, Team 3
September 18, 2015
1103 hours



Page 1

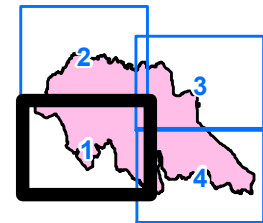
DRY GULCH
OR972S-026
Div A
Transition
NAD 83
17,823 ac

Incident Action Plan Map

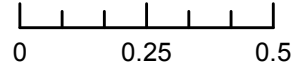
Page 1 of 4

Legend

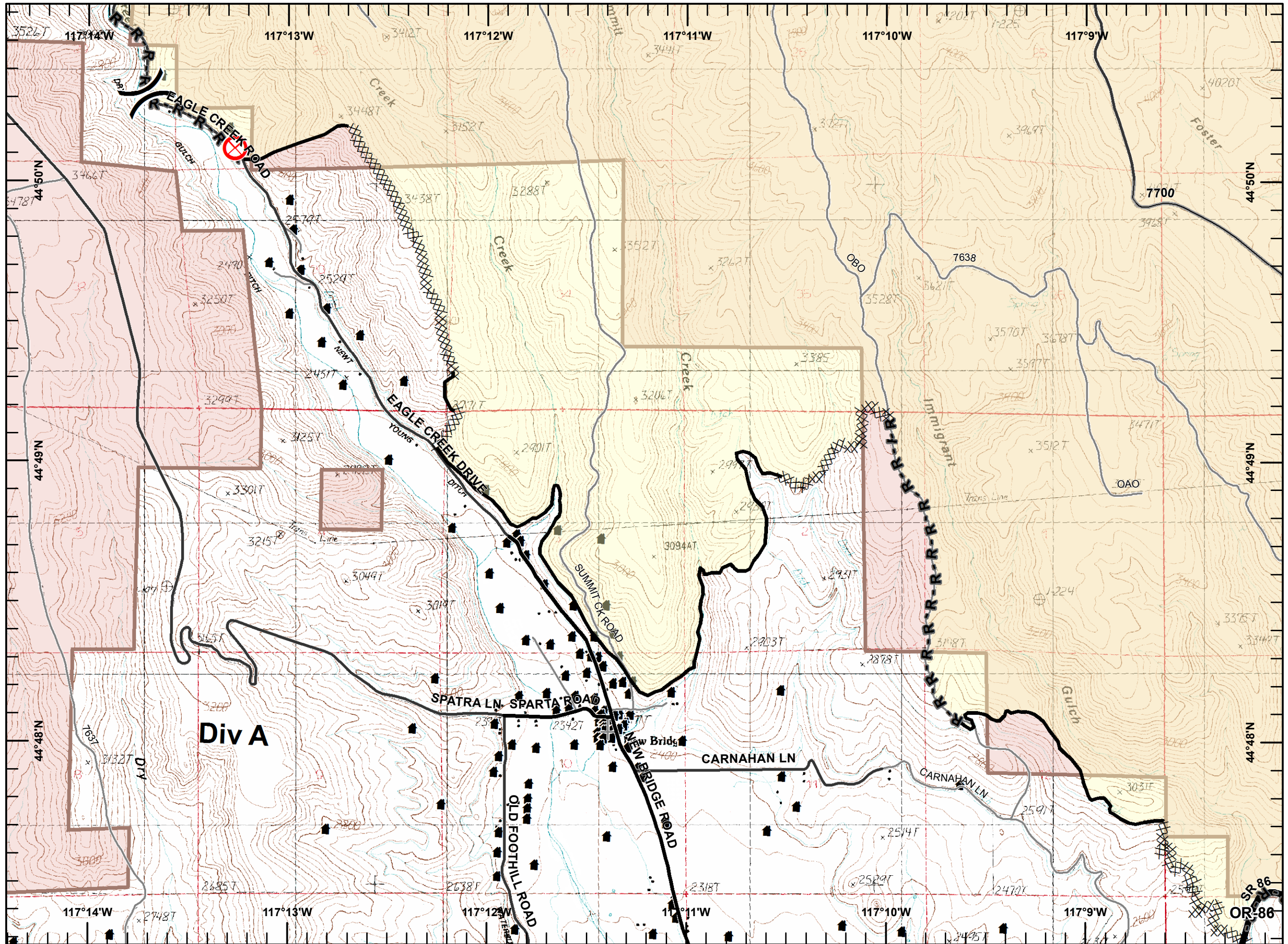
- XXXXX Completed Dozer Line
- Completed Line
- R-R Road as Completed Line
- ⊗ Fire Origin
- ▀ Structures



Miles



ODF GIS, Team 3
September 18, 2015
1035 Hours



Page 2

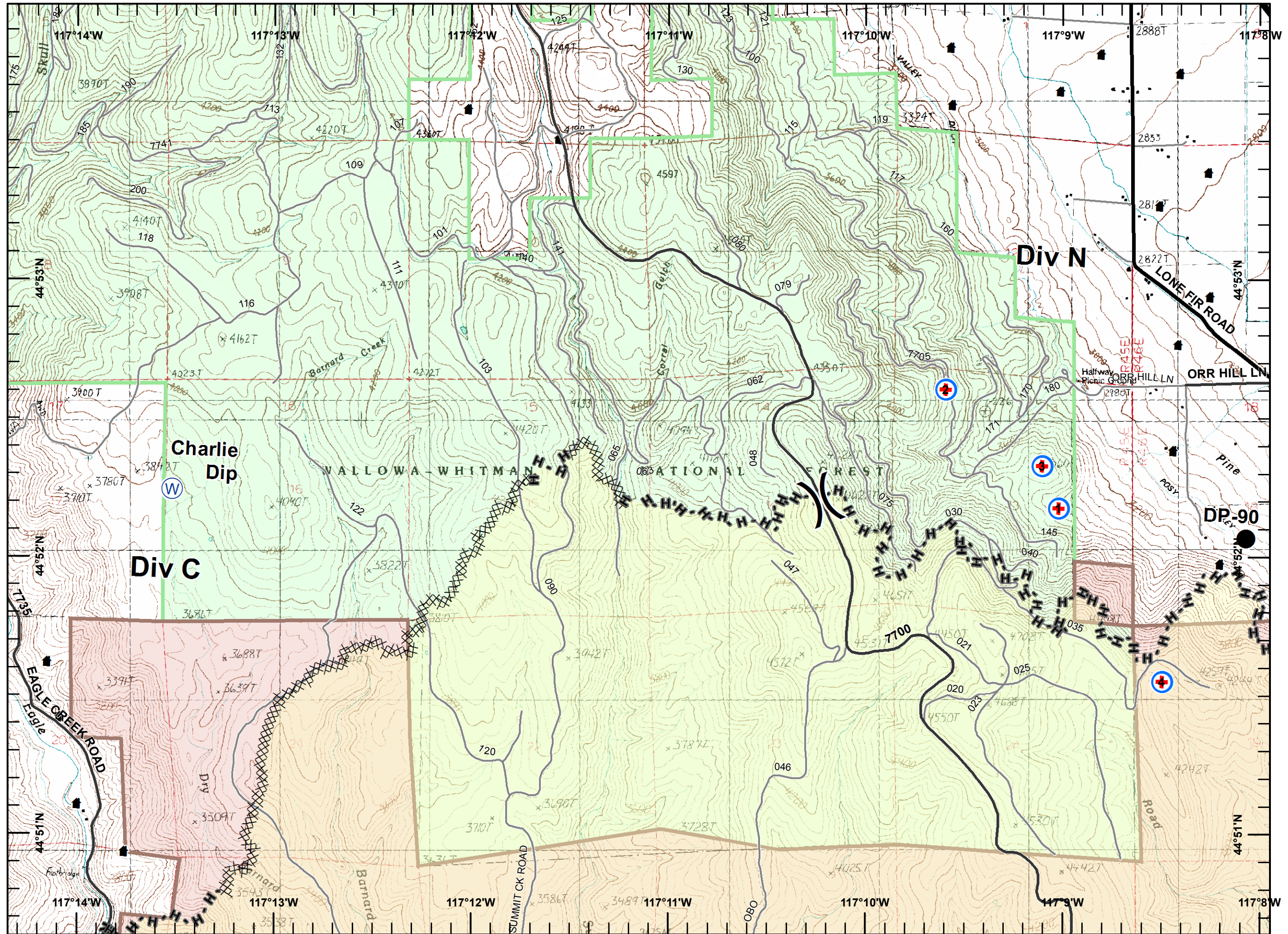
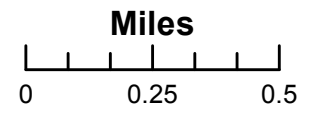
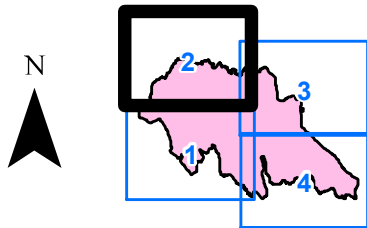
DRY GULCH
OR972S-026
Div C-N
Transition
NAD 83
17,823 ac

Incident Action Plan Map

Page 2 of 4

Legend

- XXXXX Completed Dozer Line
- H-H Hand Line
- R-R Road as Completed Line
- Drop Point
- ⊕ MediVac Site
- ⊕ Water Source
- 🏠 Structures



Page 3

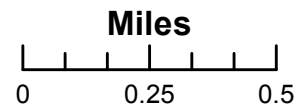
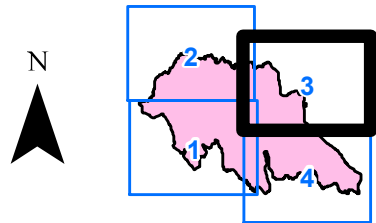
DRY GULCH
OR972S-026
Div A-N
Transition
NAD 83
17,823 ac

Incident Action Plan Map

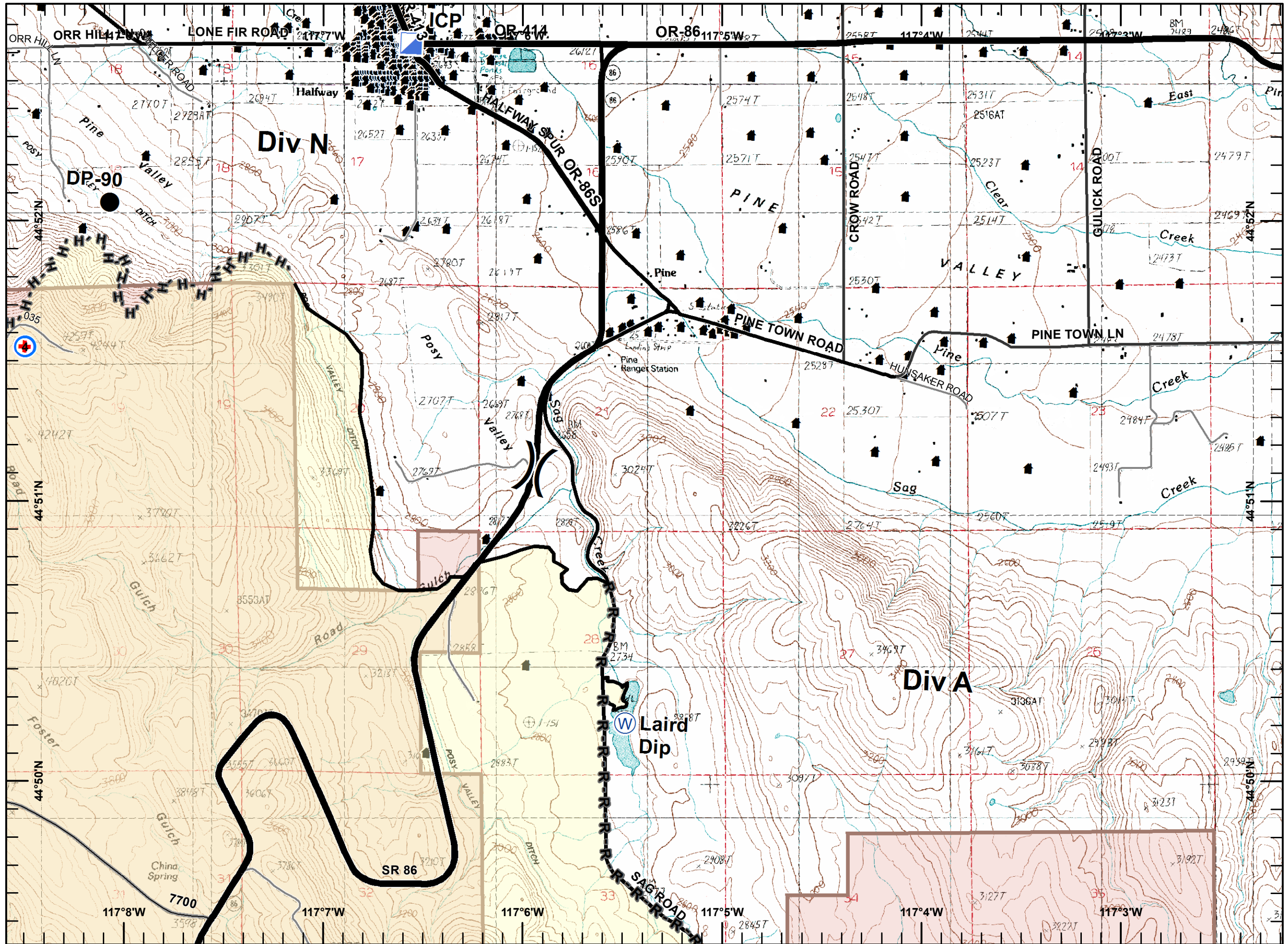
Page 3 of 4

Legend

- Completed Line
- H-H Hand Line
- R-R Road as Completed Line
- Drop Point
- ▢ Incident Command Post
- ⊕ MediVac Site
- ⊙ Water Source
- 🏠 Structures



ODF GIS, Team 3
September 18, 2015
1036 Hours



Page 4

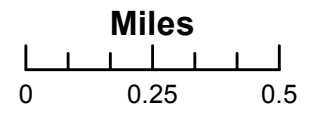
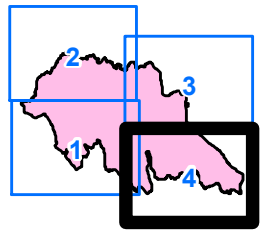
DRY GULCH
OR972S-026
Div A
Transition
NAD 83
17,823 ac

Incident Action Plan Map

Page 4 of 4

Legend

- XXXXX Completed Dozer Line
- Completed Line
- R-R Road as Completed Line
- W Water Source
- Structures



ODF GIS, Team 3
September 18, 2015
1036 Hours

