

DRAFT

Repair Map

Eagle Complex
OR-WWF-000872

9/4/2015 - Day

Approx. Acres - 12,747
As of September 4, 2015
1900 hrs

Legend

Repair Lines

- Handline
- Mechanized
- System Road

Fire Point

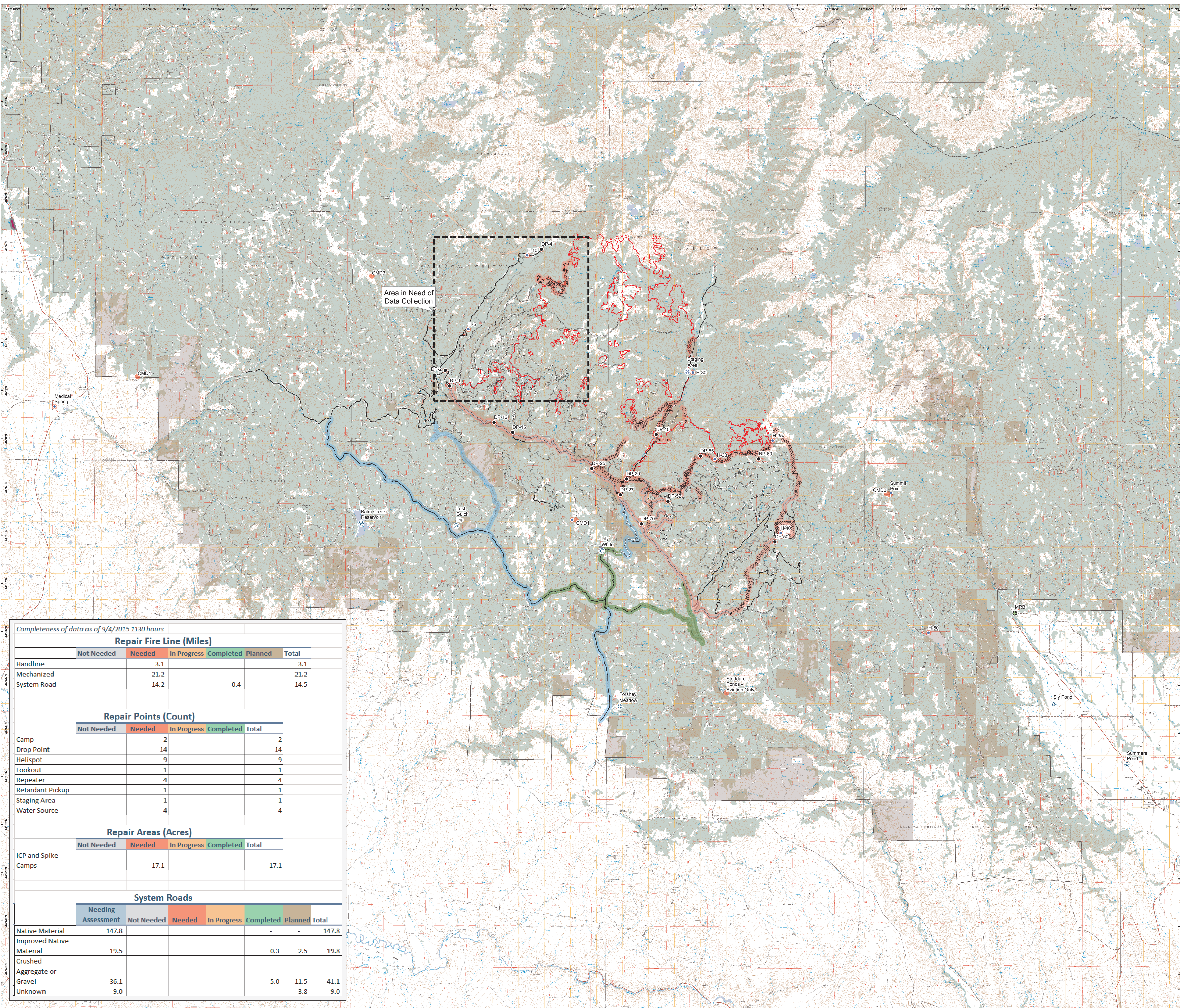
- Camp
- Drop Point
- Helispot
- Lookout
- Retardant Pickup
- Staging Area
- Water Source
- ▭ Planning Area Boundary
- ▭ Repair Areas

Repair Status

- ▭ Repair Not Needed
- ▭ Repair Needed
- ▭ Repair in Progress
- ▭ Repair Complete
- ▭ Repair Planned
- ▭ Repair Needing Assessment

Roads

- Crushed Aggregate or Gravel
- Improved Native Material
- Unimproved Native Material
- Unknown
- ▭ Fire Polygon
- ▭ Private Lands



Completeness of data as of 9/4/2015 1130 hours

Repair Fire Line (Miles)						
	Not Needed	Needed	In Progress	Completed	Planned	Total
Handline		3.1				3.1
Mechanized		21.2				21.2
System Road		14.2		0.4		14.5

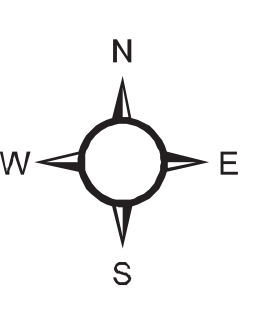
Repair Points (Count)					
	Not Needed	Needed	In Progress	Completed	Total
Camp		2			2
Drop Point		14			14
Helispot		9			9
Lookout		1			1
Repeater		4			4
Retardant Pickup		1			1
Staging Area		1			1
Water Source		4			4

Repair Areas (Acres)					
	Not Needed	Needed	In Progress	Completed	Total
ICP and Spike Camps		17.1			17.1

System Roads							
	Needing Assessment	Not Needed	Needed	In Progress	Completed	Planned	Total
Native Material	147.8						147.8
Improved Native Material					0.3	2.5	19.8
Crushed Aggregate or Gravel	36.1				5.0	11.5	41.1
Unknown	9.0					3.8	9.0



Wallowa-Whitman National Forest



DTS
9/4/2015
1140 hrs

Datum: NAD83