



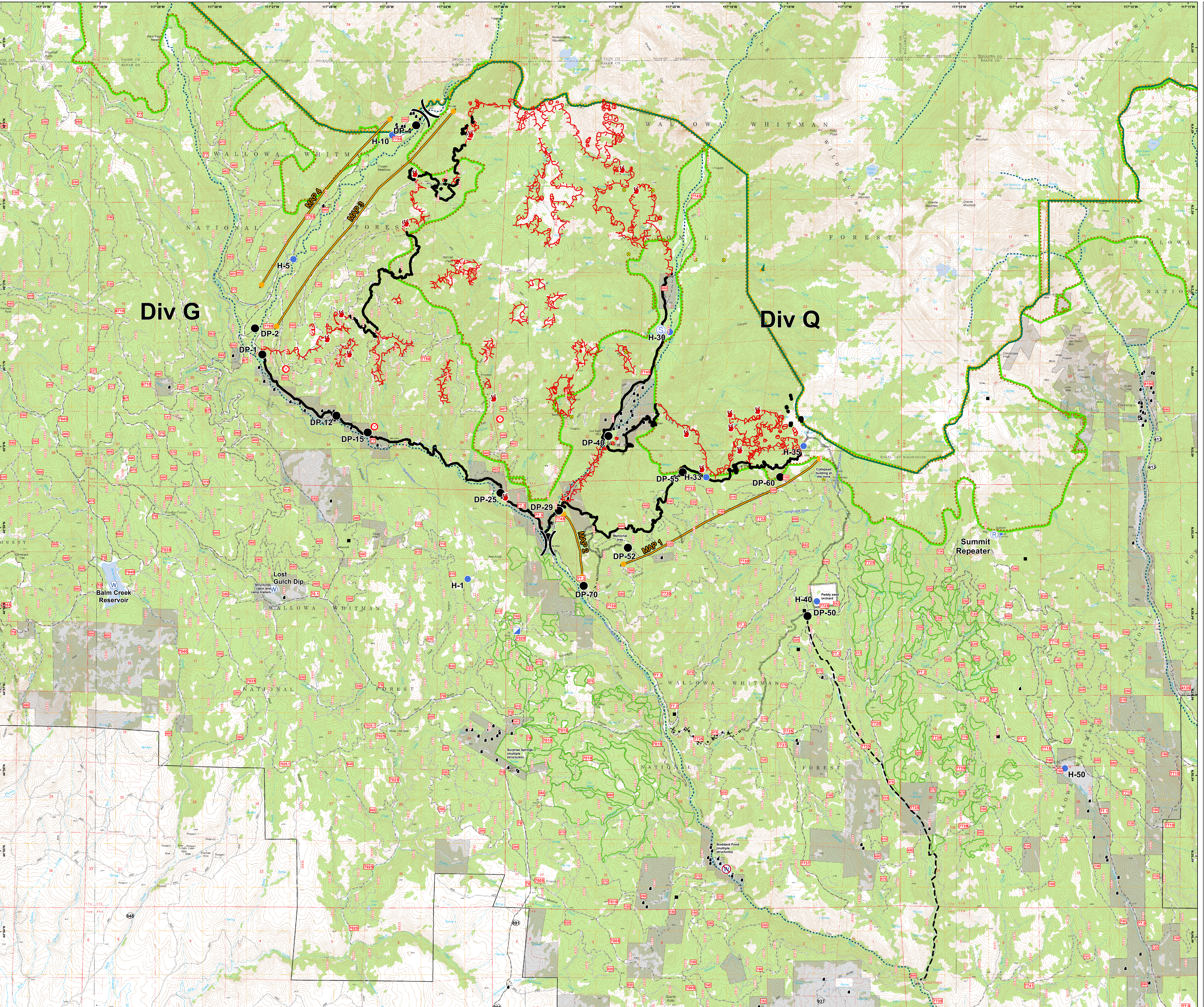
Wallowa-Whitman National Forest

Situation & Field Map

Eagle Complex
OR-WWF-000872

9/12/2015 - Day

Approx. Acres - 12,763
As of September 6, 2015
1630 hrs



Legend

- Historic Structure Location
- Generalized Structure Locations
- Approx. Hazard Mine Location
- Historic Ditches
- X Division
- Drop Point
- ⊗ Fire Origin
- Helispot
- Hot Spot
- Incident Command Post
- Lookout
- Ⓡ Repeater
- Ⓢ Staging Area
- Ⓜ Water Source
- Ⓜ Restricted Water Source
- Uncontrolled Fire Edge
- Completed Dozer Line
- Completed Line
- - - Hand Line
- Management Action
- - - Planned Fire Line
- - - Proposed Dozer Line
- Eagle Cap Wilderness Boundary
- USFS Roadless
- Bull Trout Critical Habitat
- USFS Timber Sale Units



Use this QR Code to download this map to your smart phone.

DTS
9/11/2015
2035 hrs
Datum: NAD83

