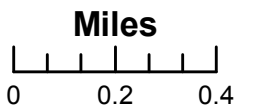
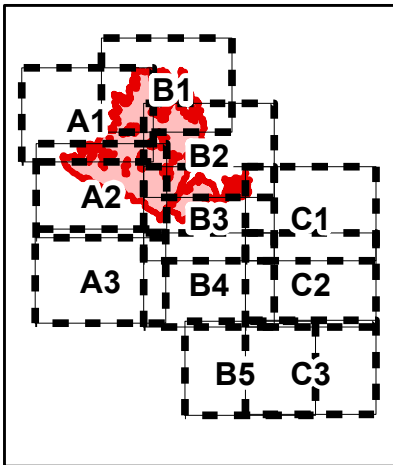


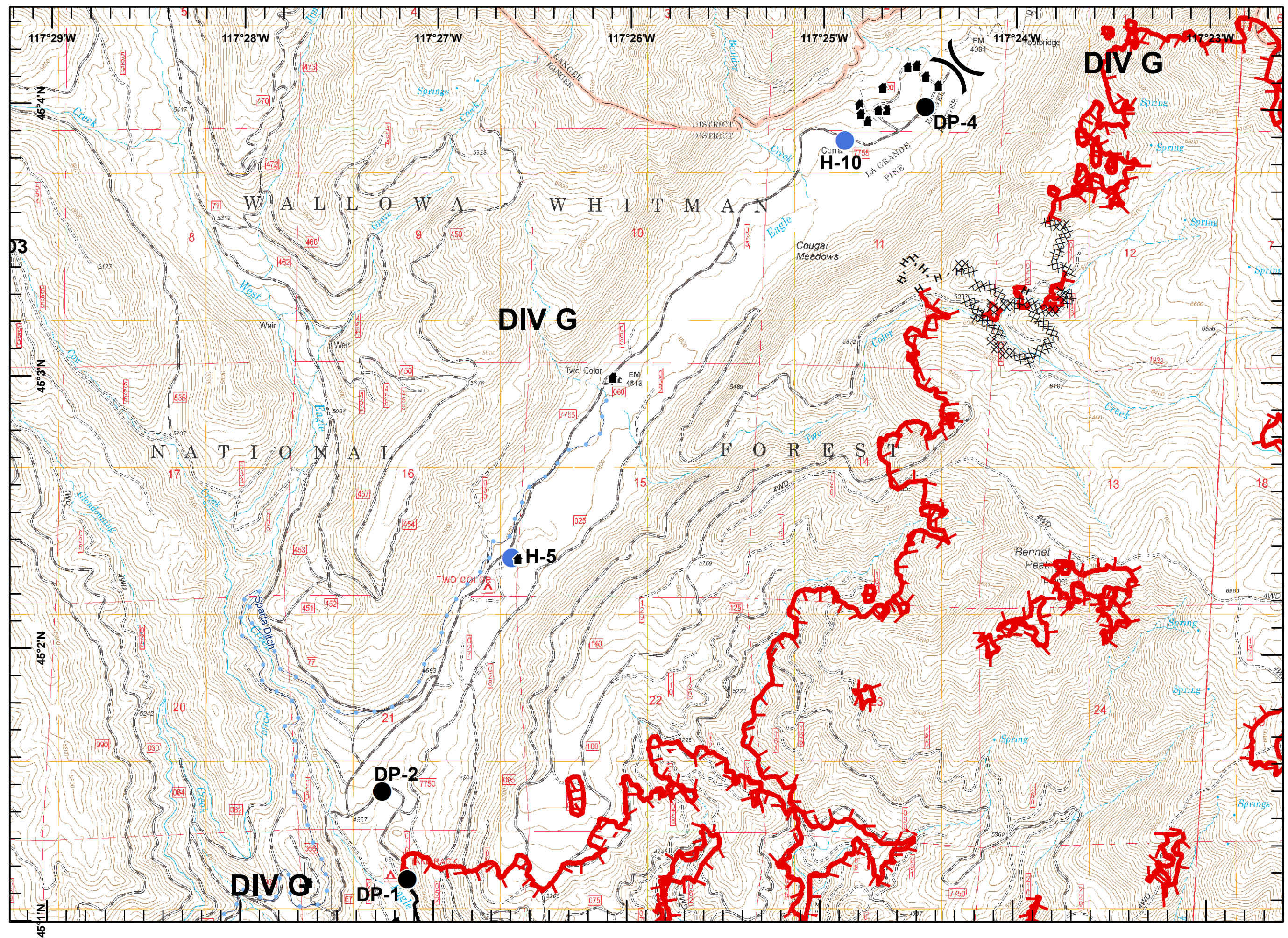
**Eagle Complex
Incident #872
9/8 2015
Day Shift
NAD 83
Page A1**

Fire data from
9/7/15

- Division
- Generalized Structure Loc.
- Historic Structure Location
- Historic Ditches
- Mine Hazard
- Drop Point
- Camp
- Helispot
- Water Source
- Restricted Water Source
- Repeater
- Lookout
- Fire Origin
- Retardant Pickup
- Uncontrolled Fire Edge
- Completed Dozer Line
- Completed Line
- H - Hand Line
- R - Road as Completed Line
- Planned Fire Line
- Proposed Dozer Line



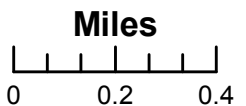
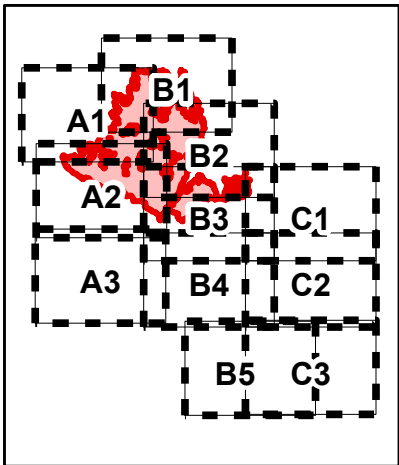
JCV
9/7/2015
2130 Hours



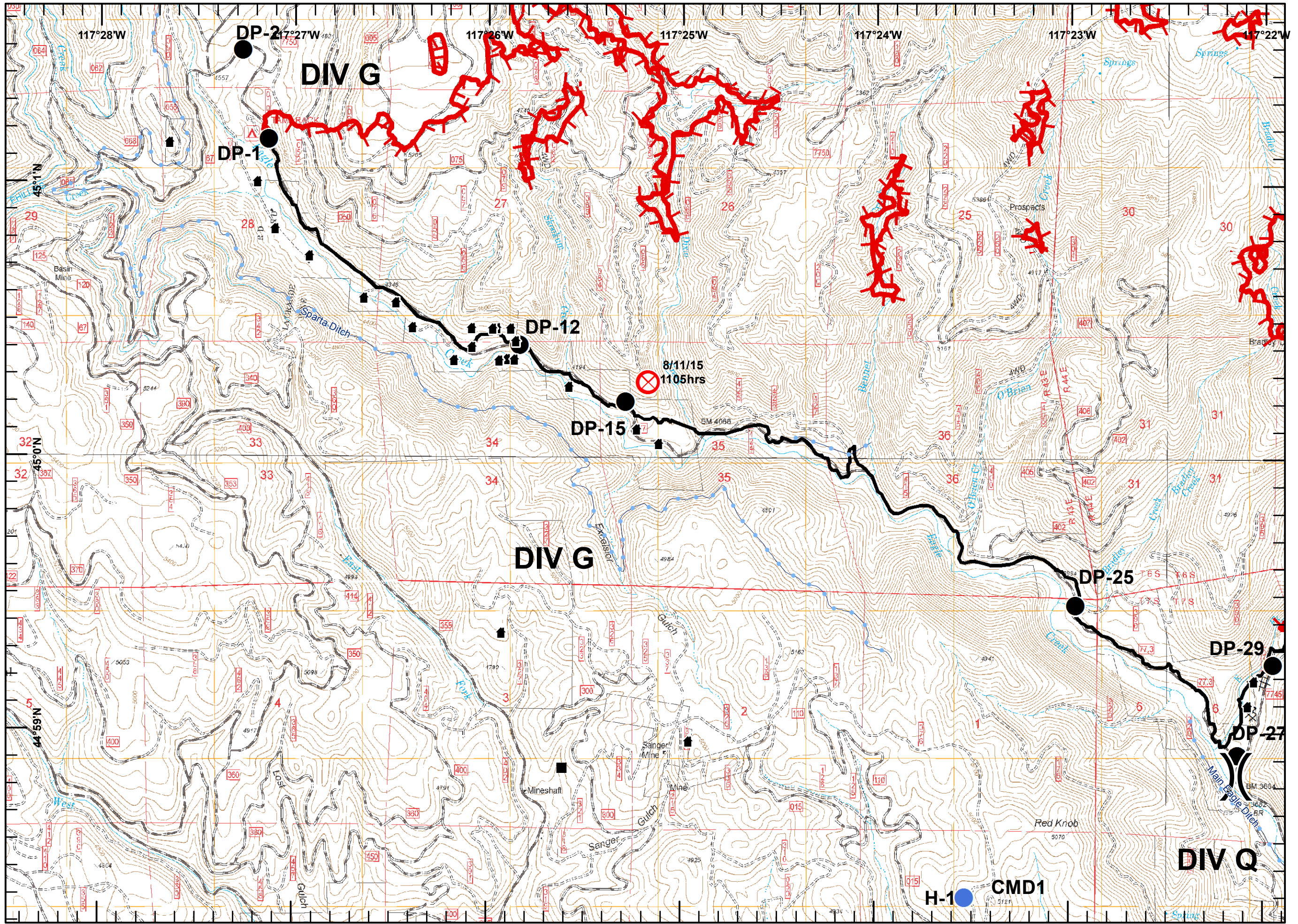
**Eagle Complex
Incident #872
9/8 2015
Day Shift
NAD 83
Page A2**

Fire data from
9/7/15

- Division
- Generalized Structure Loc.
- Historic Structure Location
- Historic Ditches
- Mine Hazard
- Drop Point
- Camp
- Helispot
- Water Source
- Restricted Water Source
- Repeater
- Lookout
- Fire Origin
- Retardant Pickup
- Uncontrolled Fire Edge
- Completed Dozer Line
- Completed Line
- H - Hand Line
- R - Road as Completed Line
- Planned Fire Line
- Proposed Dozer Line



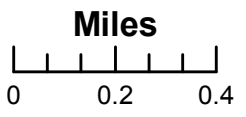
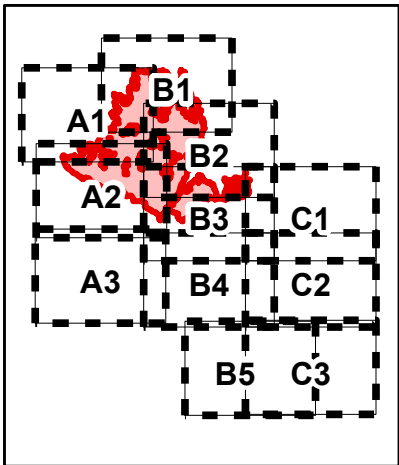
JCV
9/7/2015
2130 Hours



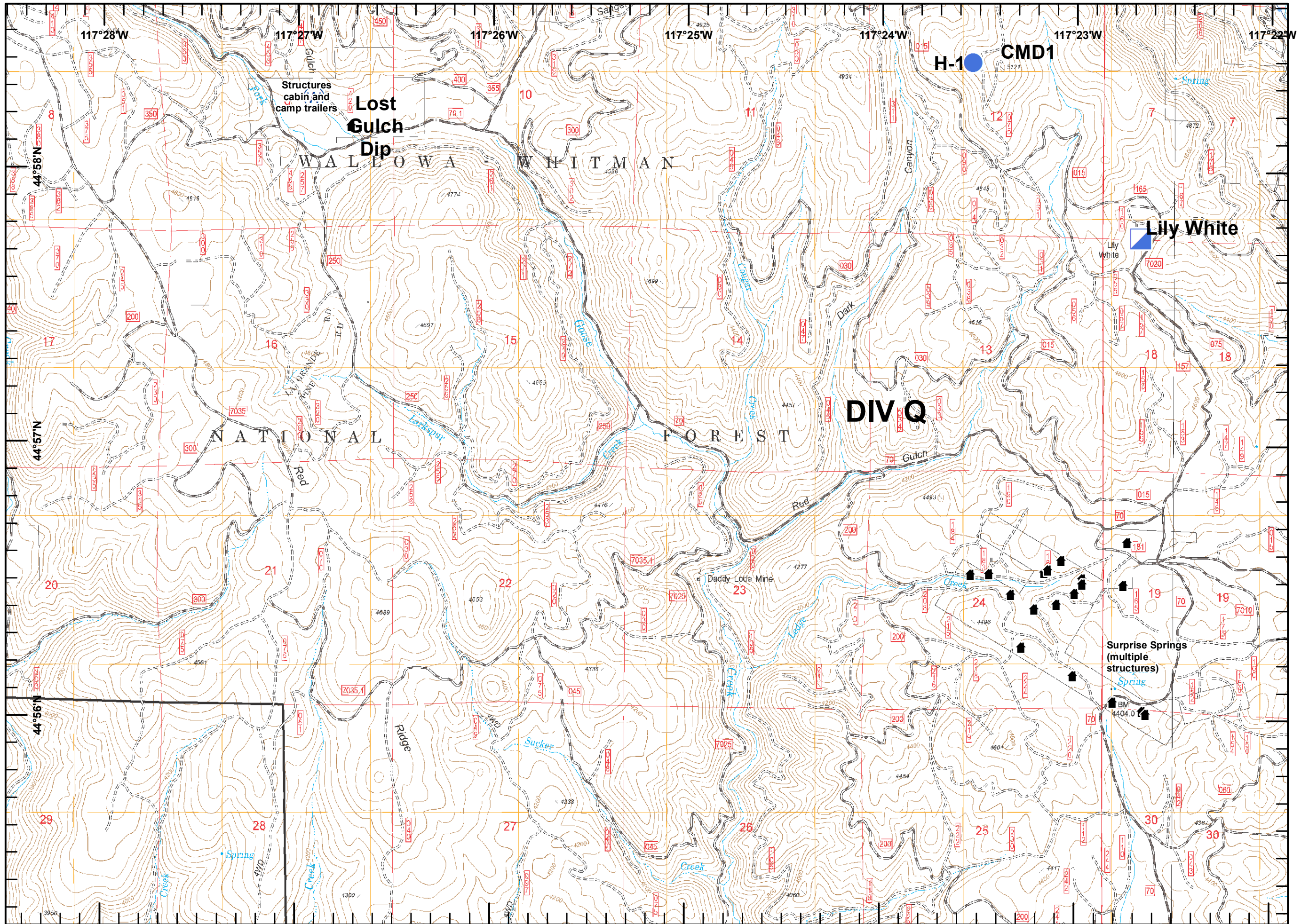
**Eagle Complex
Incident #872
9/8 2015
Day Shift
NAD 83
Page A3**

Fire data from
9/7/15

- Division
- Generalized Structure Loc.
- Historic Structure Location
- Historic Ditches
- Mine Hazard
- Drop Point
- Camp
- Helispot
- Water Source
- Restricted Water Source
- Repeater
- Lookout
- Fire Origin
- Retardant Pickup
- Uncontrolled Fire Edge
- Completed Dozer Line
- Completed Line
- H - Hand Line
- R - Road as Completed Line
- Planned Fire Line
- Proposed Dozer Line



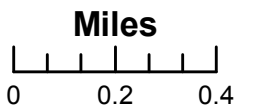
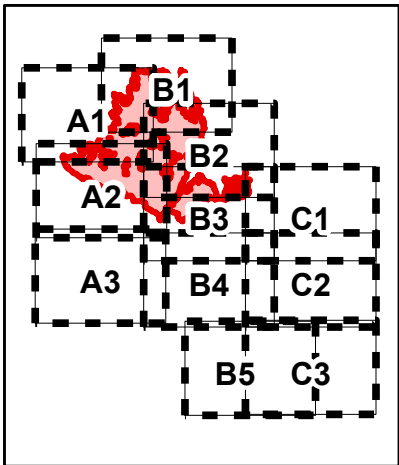
JCV
9/7/2015
2130 Hours



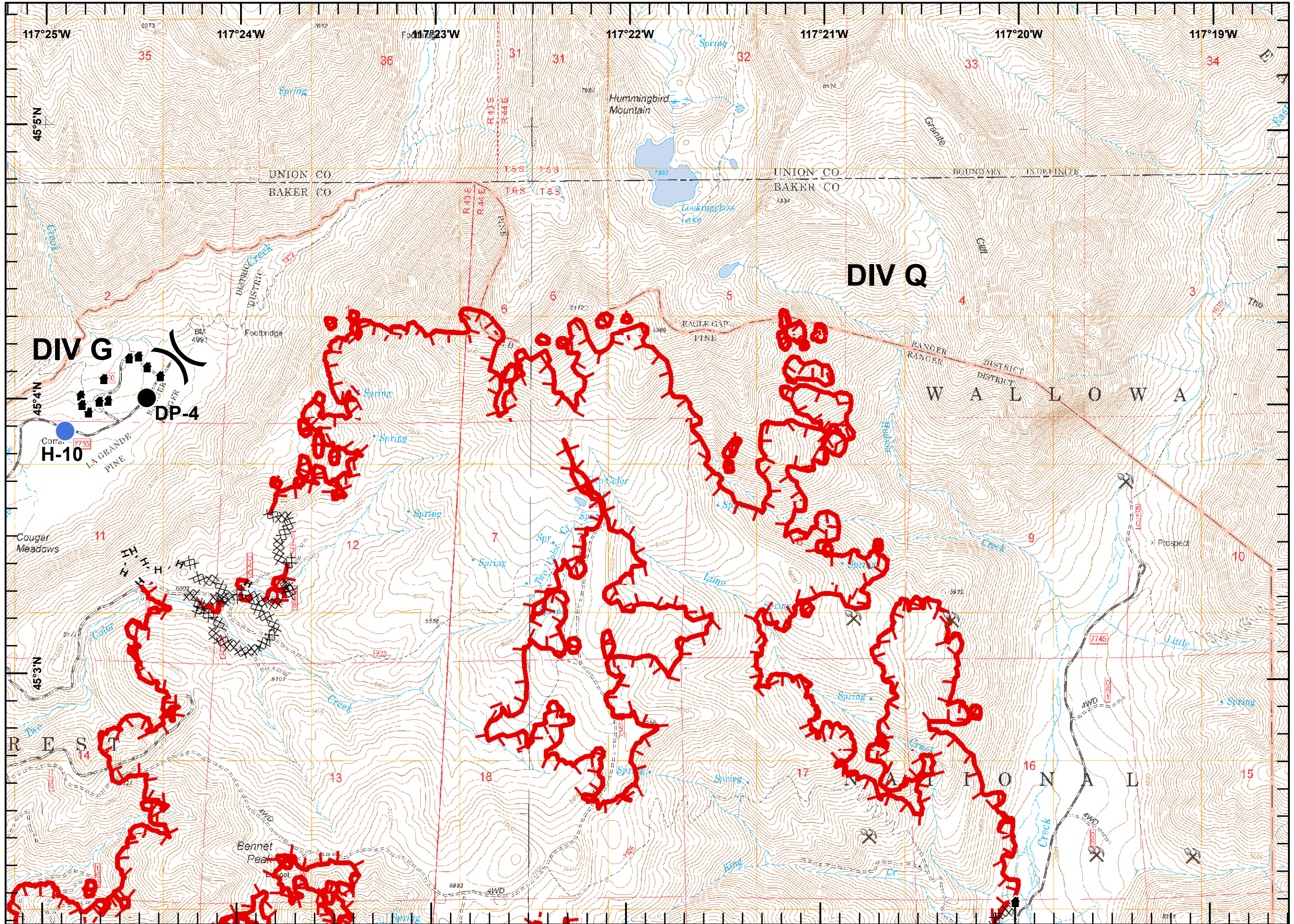
**Eagle Complex
Incident #872
9/8 2015
Day Shift
NAD 83
Page B1**

Fire data from
9/7/15

- Division
- Generalized Structure Loc.
- Historic Structure Location
- Historic Ditches
- Mine Hazard
- Drop Point
- Camp
- Helispot
- Water Source
- Restricted Water Source
- Repeater
- Lookout
- Fire Origin
- Retardant Pickup
- Uncontrolled Fire Edge
- Completed Dozer Line
- Completed Line
- H - Hand Line
- R - Road as Completed Line
- Planned Fire Line
- Proposed Dozer Line



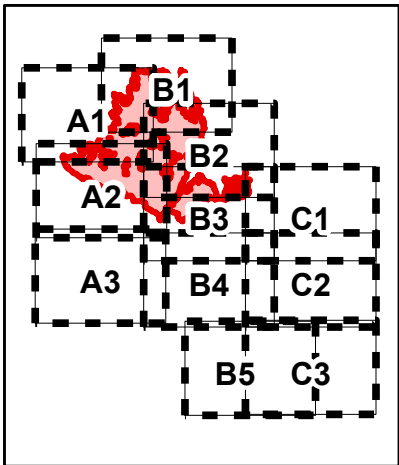
JCV
9/7/2015
2130 Hours



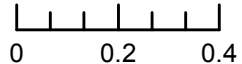
**Eagle Complex
Incident #872
9/8 2015
Day Shift
NAD 83
Page B2**

Fire data from
9/7/15

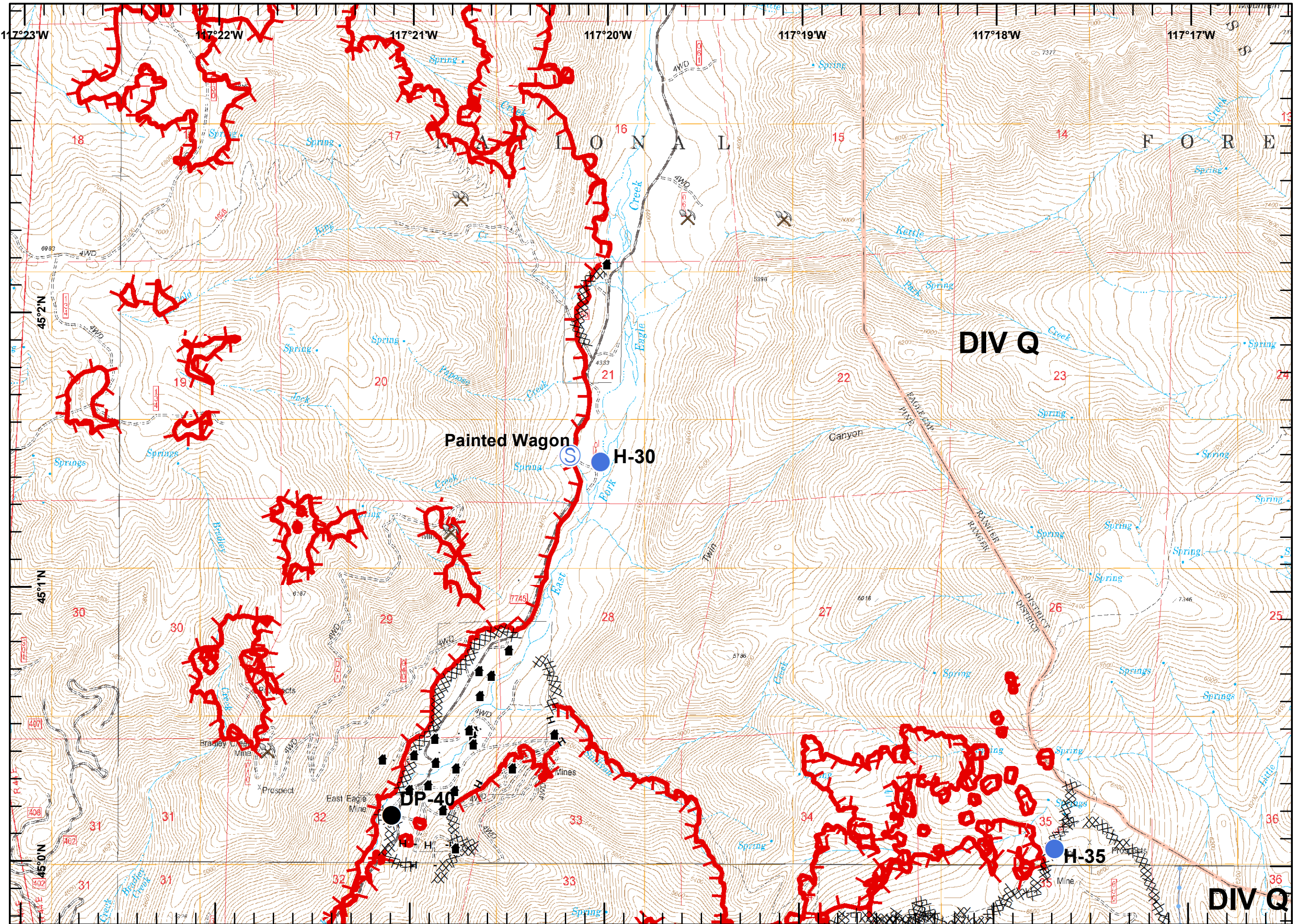
- Division
- Generalized Structure Loc.
- Historic Structure Location
- Historic Ditches
- Mine Hazard
- Drop Point
- Camp
- Helispot
- Water Source
- Restricted Water Source
- Repeater
- Lookout
- Fire Origin
- Retardant Pickup
- Uncontrolled Fire Edge
- Completed Dozer Line
- Completed Line
- H - Hand Line
- R - Road as Completed Line
- Planned Fire Line
- Proposed Dozer Line



Miles



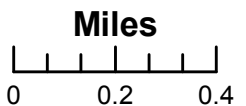
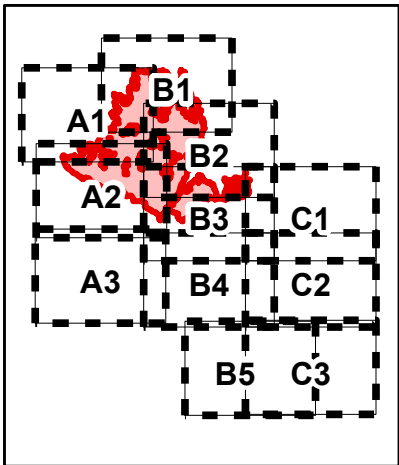
JCV
9/7/2015
2130 Hours



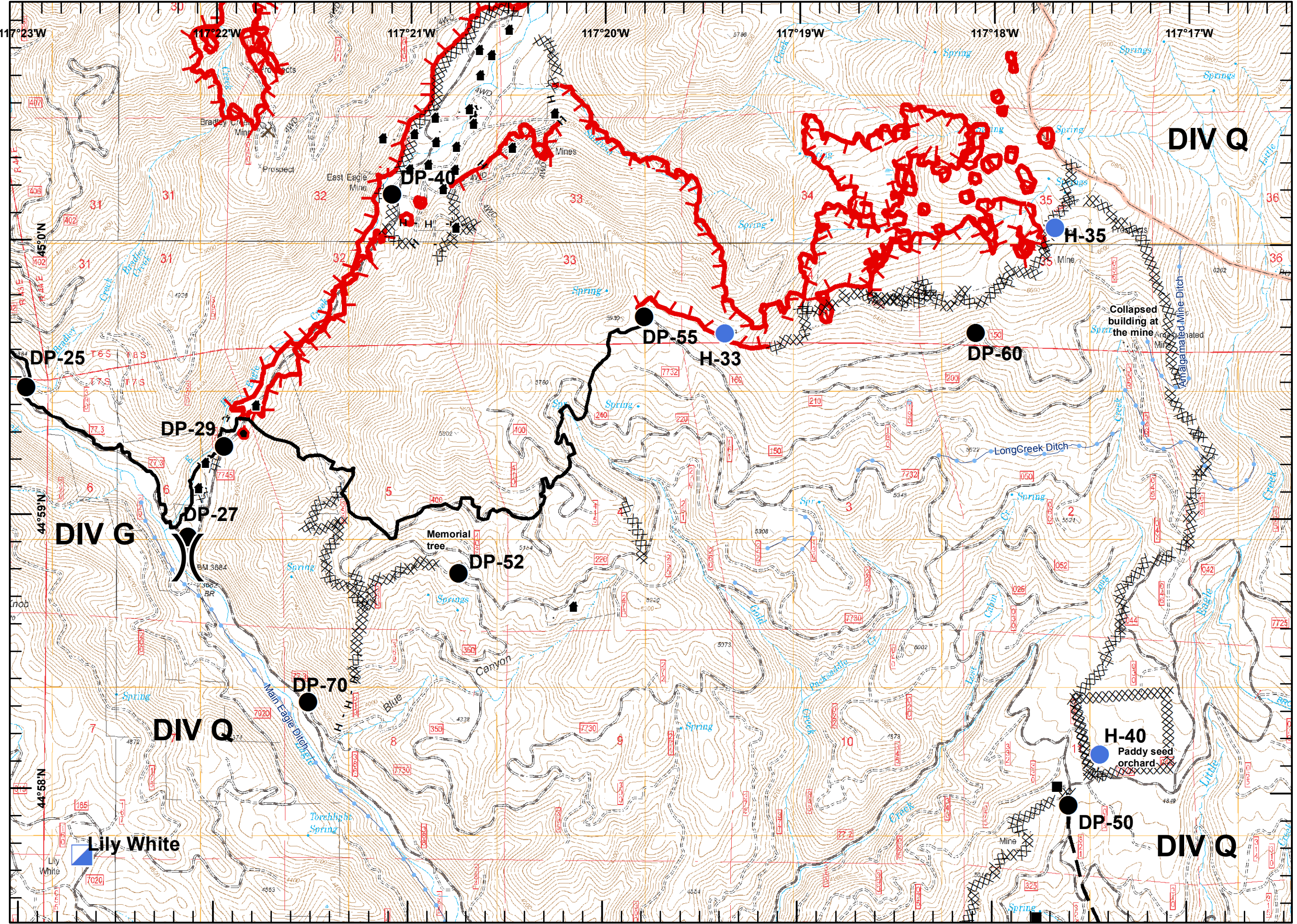
**Eagle Complex
Incident #872
9/8 2015
Day Shift
NAD 83
Page B3**

Fire data from
9/7/15

- Division
- Generalized Structure Loc.
- Historic Structure Location
- Historic Ditches
- Mine Hazard
- Drop Point
- Camp
- Helispot
- Water Source
- Restricted Water Source
- Repeater
- Lookout
- Fire Origin
- Retardant Pickup
- Uncontrolled Fire Edge
- Completed Dozer Line
- Completed Line
- H - Hand Line
- R - Road as Completed Line
- Planned Fire Line
- Proposed Dozer Line



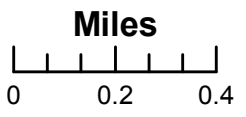
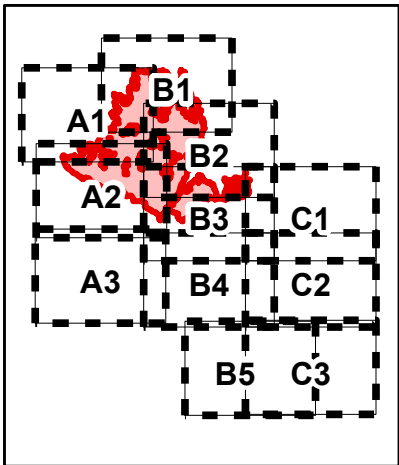
JCV
9/7/2015
2130 Hours



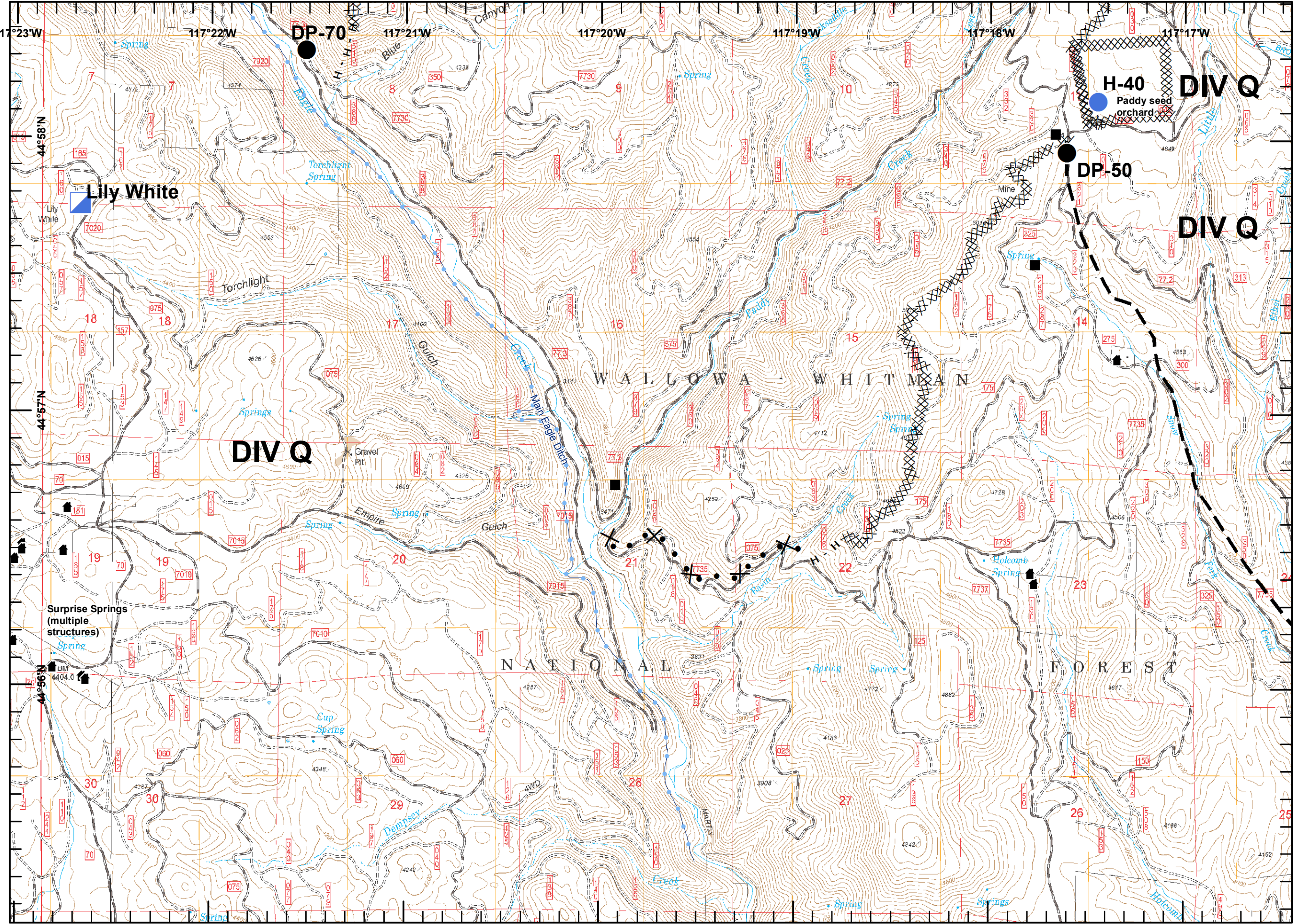
**Eagle Complex
Incident #872
9/8 2015
Day Shift
NAD 83
Page B4**

Fire data from
9/7/15

- Division
- Generalized Structure Loc.
- Historic Structure Location
- Historic Ditches
- Mine Hazard
- Drop Point
- Camp
- Helispot
- Water Source
- Restricted Water Source
- Repeater
- Lookout
- Fire Origin
- Retardant Pickup
- Uncontrolled Fire Edge
- Completed Dozer Line
- Completed Line
- H - Hand Line
- R - Road as Completed Line
- Planned Fire Line
- Proposed Dozer Line



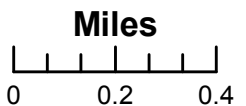
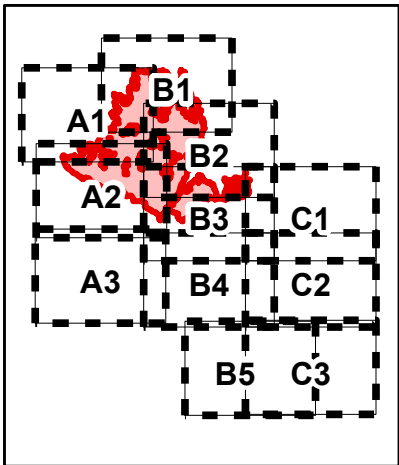
JCV
9/7/2015
2130 Hours



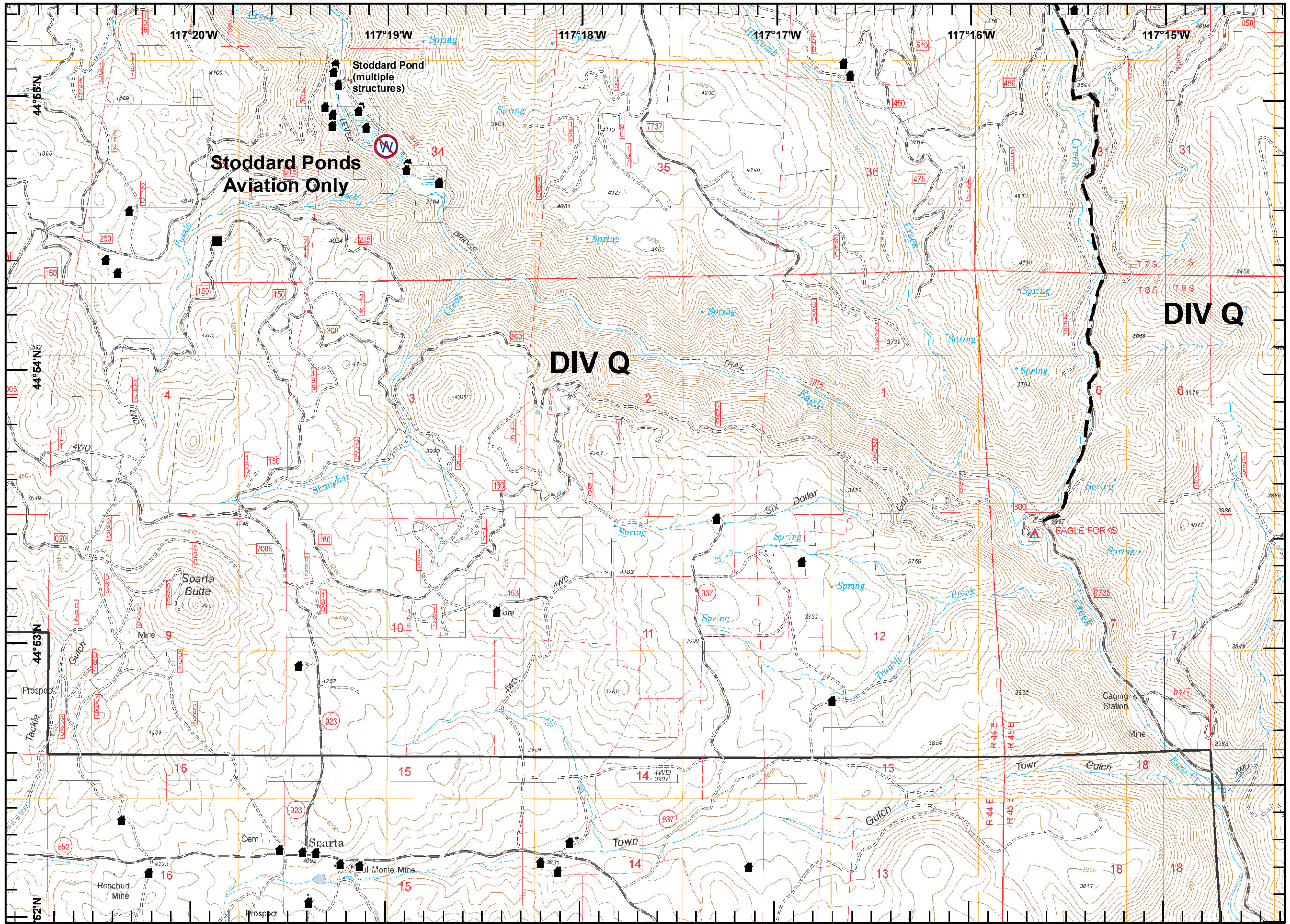
**Eagle Complex
Incident #872
9/8 2015
Day Shift
NAD 83
Page B5**

Fire data from
9/7/15

- Division
- Generalized Structure Loc.
- Historic Structure Location
- Historic Ditches
- Mine Hazard
- Drop Point
- Camp
- Helispot
- Water Source
- Restricted Water Source
- Repeater
- Lookout
- Fire Origin
- Retardant Pickup
- Uncontrolled Fire Edge
- Completed Dozer Line
- Completed Line
- H - Hand Line
- R - Road as Completed Line
- Planned Fire Line
- Proposed Dozer Line



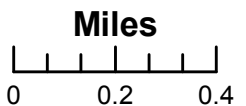
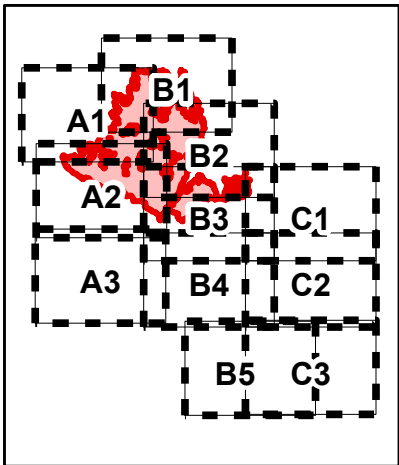
JCV
9/7/2015
2130 Hours



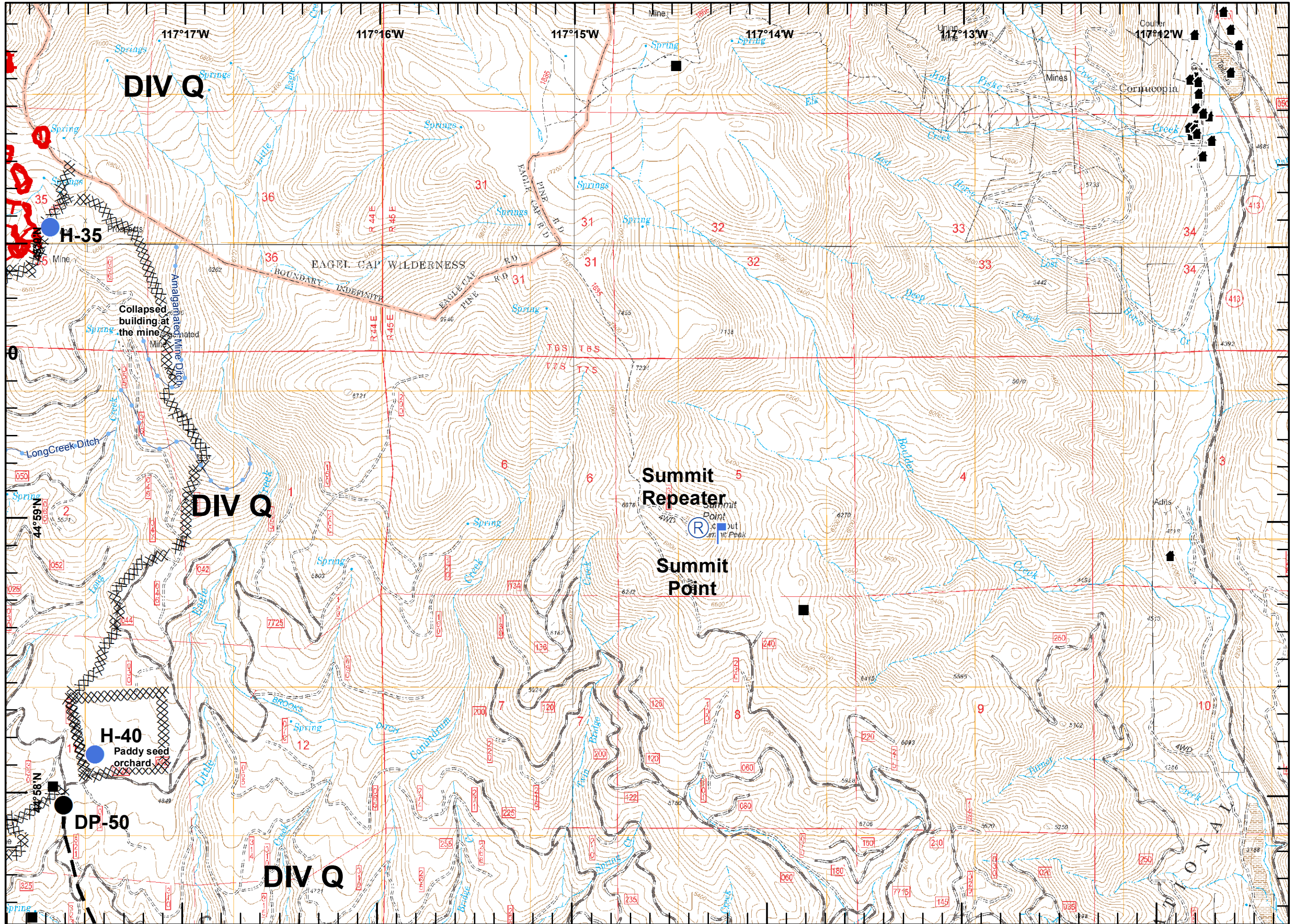
**Eagle Complex
Incident #872
9/8 2015
Day Shift
NAD 83
Page C1**

Fire data from
9/7/15

- Division
- Generalized Structure Loc.
- Historic Structure Location
- Historic Ditches
- Mine Hazard
- Drop Point
- Camp
- Helispot
- Water Source
- Restricted Water Source
- Repeater
- Lookout
- Fire Origin
- Retardant Pickup
- Uncontrolled Fire Edge
- Completed Dozer Line
- Completed Line
- H - Hand Line
- R - Road as Completed Line
- Planned Fire Line
- Proposed Dozer Line



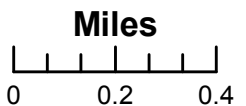
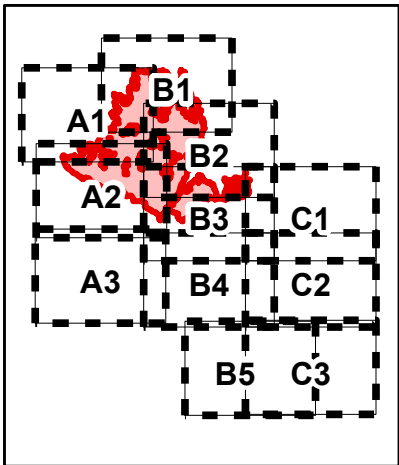
JCV
9/7/2015
2130 Hours



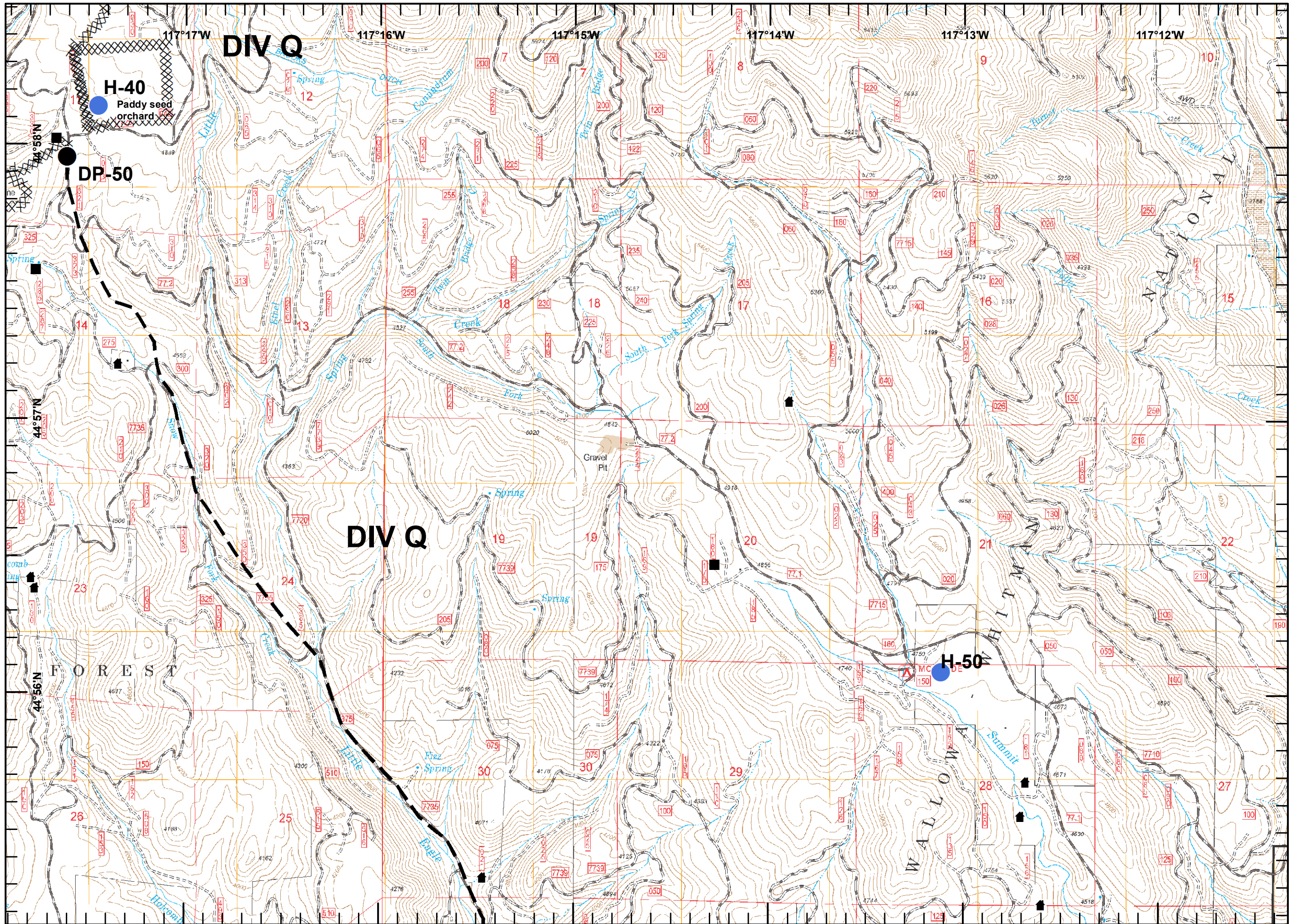
**Eagle Complex
Incident #872
9/8 2015
Day Shift
NAD 83
Page C2**

Fire data from
9/7/15

- Division
- Generalized Structure Loc.
- Historic Structure Location
- Historic Ditches
- Mine Hazard
- Drop Point
- Camp
- Helispot
- Water Source
- Restricted Water Source
- Repeater
- Lookout
- Fire Origin
- Retardant Pickup
- Uncontrolled Fire Edge
- Completed Dozer Line
- Completed Line
- H - Hand Line
- R - Road as Completed Line
- Planned Fire Line
- Proposed Dozer Line



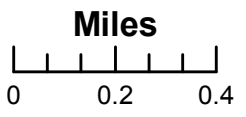
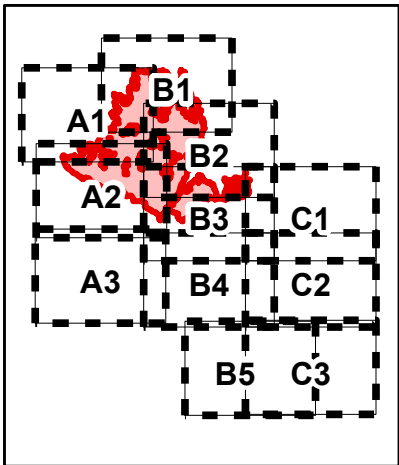
JCV
9/7/2015
2130 Hours



**Eagle Complex
Incident #872
9/8 2015
Day Shift
NAD 83
Page C3**

Fire data from
9/7/15

- Division
- Generalized Structure Loc.
- Historic Structure Location
- Historic Ditches
- Mine Hazard
- Drop Point
- Camp
- Helispot
- Water Source
- Restricted Water Source
- Repeater
- Lookout
- Fire Origin
- Retardant Pickup
- Uncontrolled Fire Edge
- Completed Dozer Line
- Completed Line
- H - Hand Line
- R - Road as Completed Line
- Planned Fire Line
- Proposed Dozer Line



JCV
9/7/2015
2130 Hours

