





# Page 1

ELDORADO  
OR972S-000942

Div A-H

August 20, 2015, Night

NAD 83

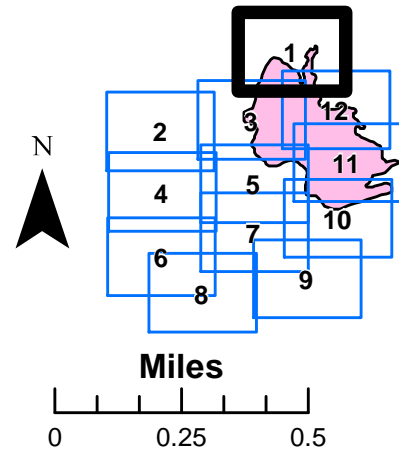
Approx 20,611 ac

## Incident Action Plan Map

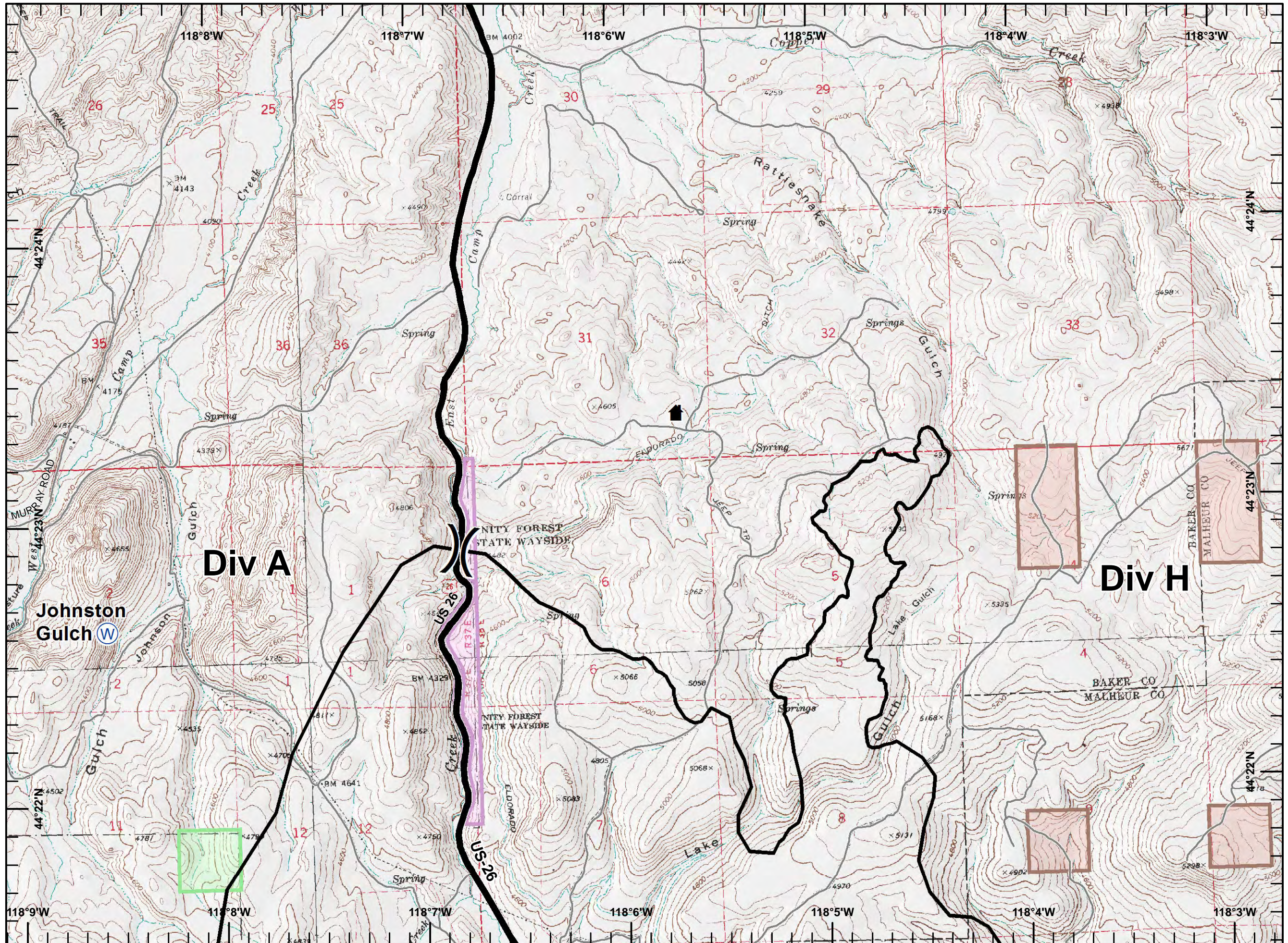
Page 1 of 12

### Legend

- Completed Line
- Ⓜ Dip Site
- ▲ Structures



ODF GIS, Team 3  
August 20, 2015  
1440 Hours





# Page 2

ELDORADO  
OR972S-000942

Div A

August 20, 2015, Night


NAD 83

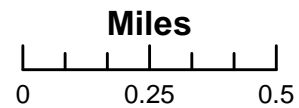
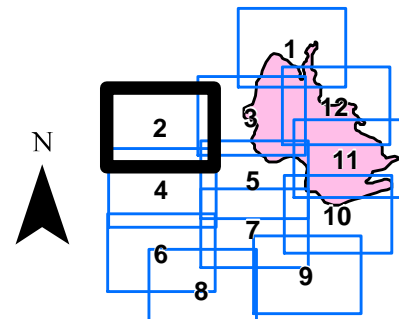
Approx 20,611 ac

## Incident Action Plan Map

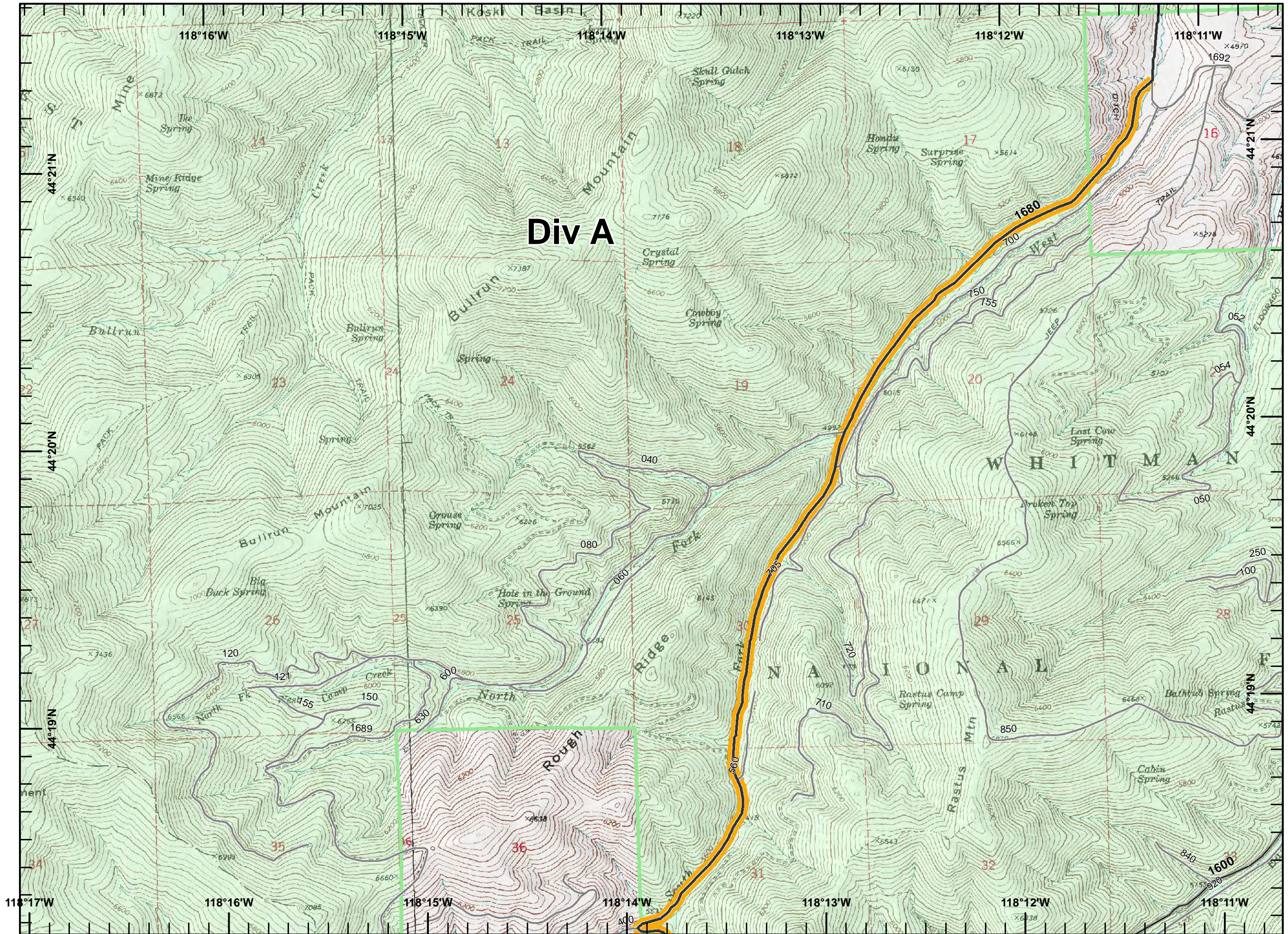
Page 2 of 12

### Legend

 Potential Fire Spread



ODF GIS, Team 3  
August 20, 2015  
1440 Hours





# Page 3

ELDORADO  
OR972S-000942

Div A-W

August 20, 2015, Night






NAD 83

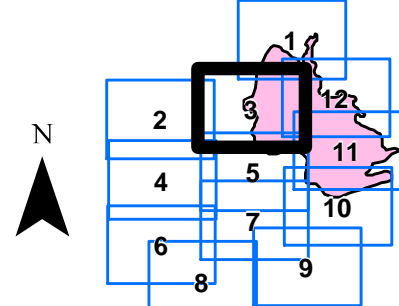
Approx 20,611 ac

## Incident Action Plan Map

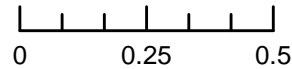
Page 3 of 12

### Legend

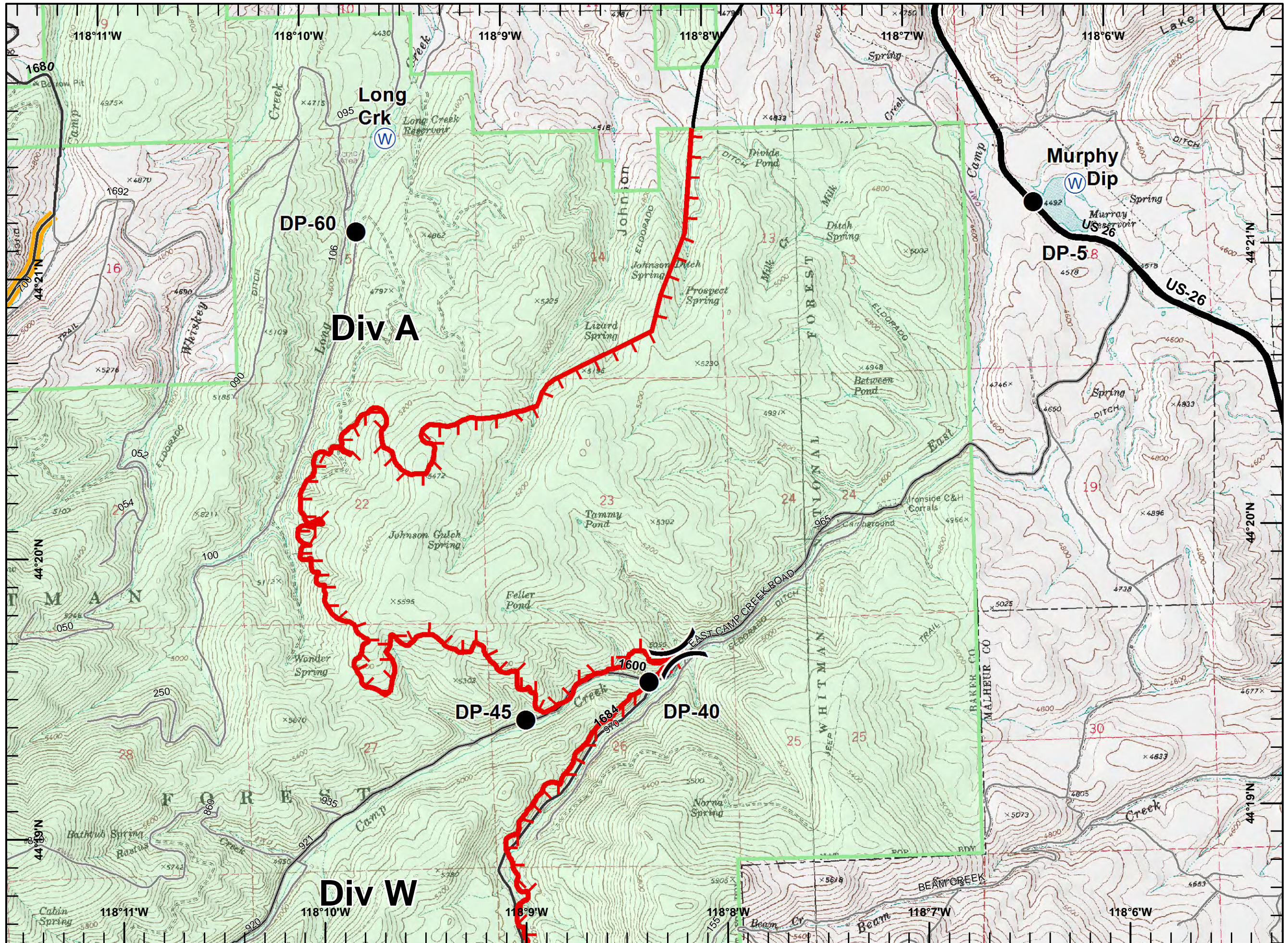
-  Uncontrolled Fire Edge
-  Completed Line
-  Potential Fire Spread
-  Drop Point
-  Dip Site



Miles



ODF GIS, Team 3  
August 20, 2015  
1440 Hours





# Page 4

ELDORADO  
OR972S-000942

Div A


August 20, 2015, Night  
NAD 83

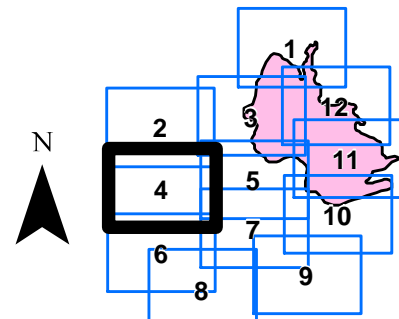
Approx 20,611 ac

## Incident Action Plan Map

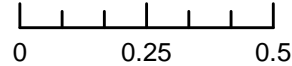
Page 4 of 12

### Legend

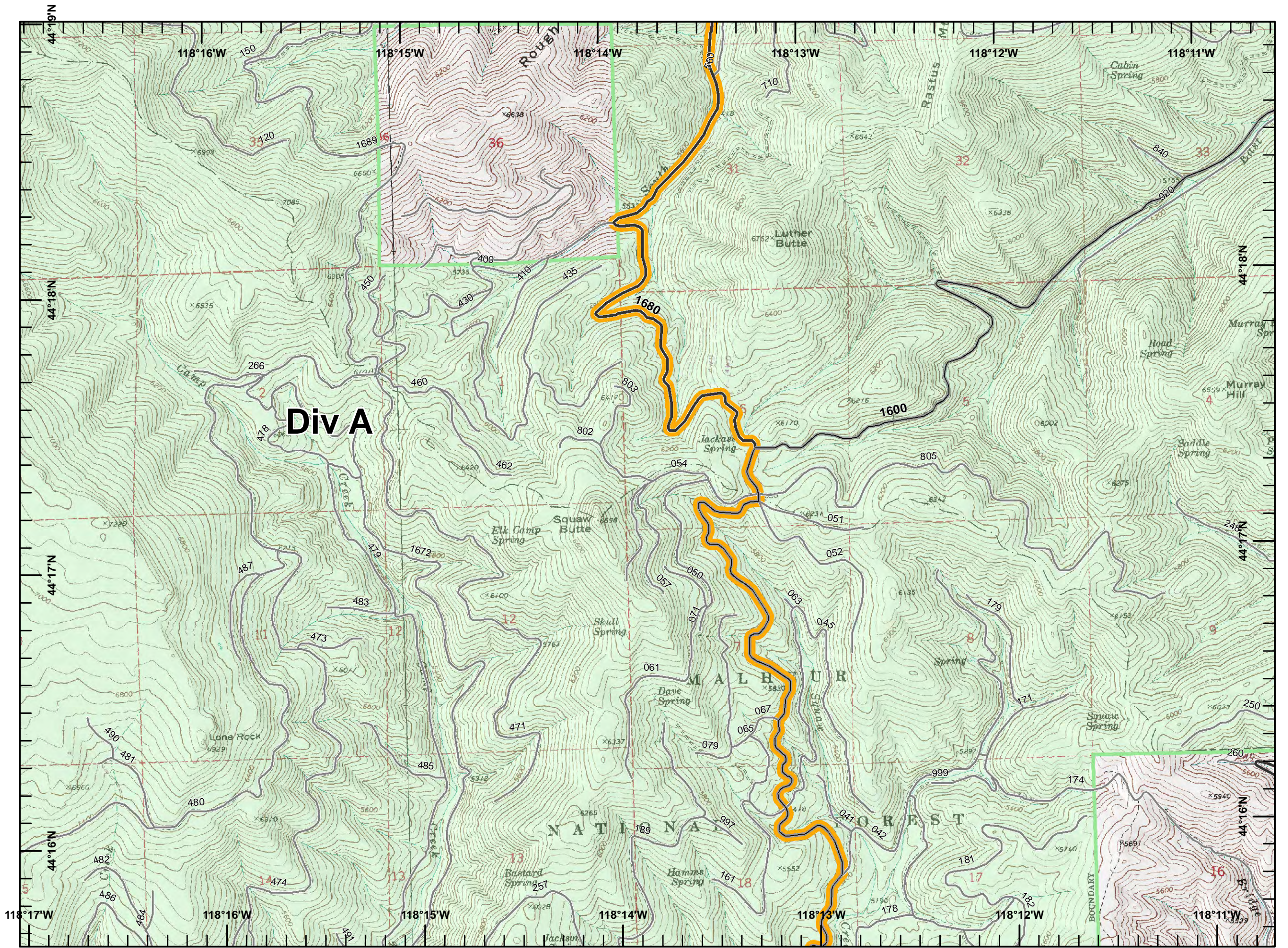
 Potential Fire Spread



Miles



ODF GIS, Team 3  
August 20, 2015  
1440 Hours







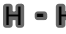





# Page 5

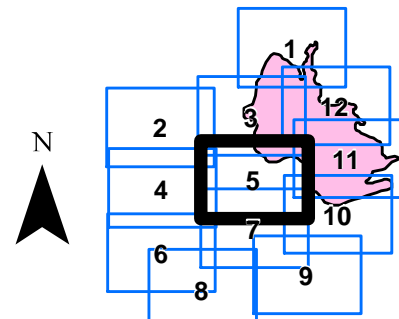
ELDORADO  
OR972S-000942  
Div M-R-W  
August 20, 2015, Night  
NAD 83  
Approx 20,611 ac

## Incident Action Plan Map

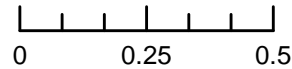
Page 5 of 12

### Legend

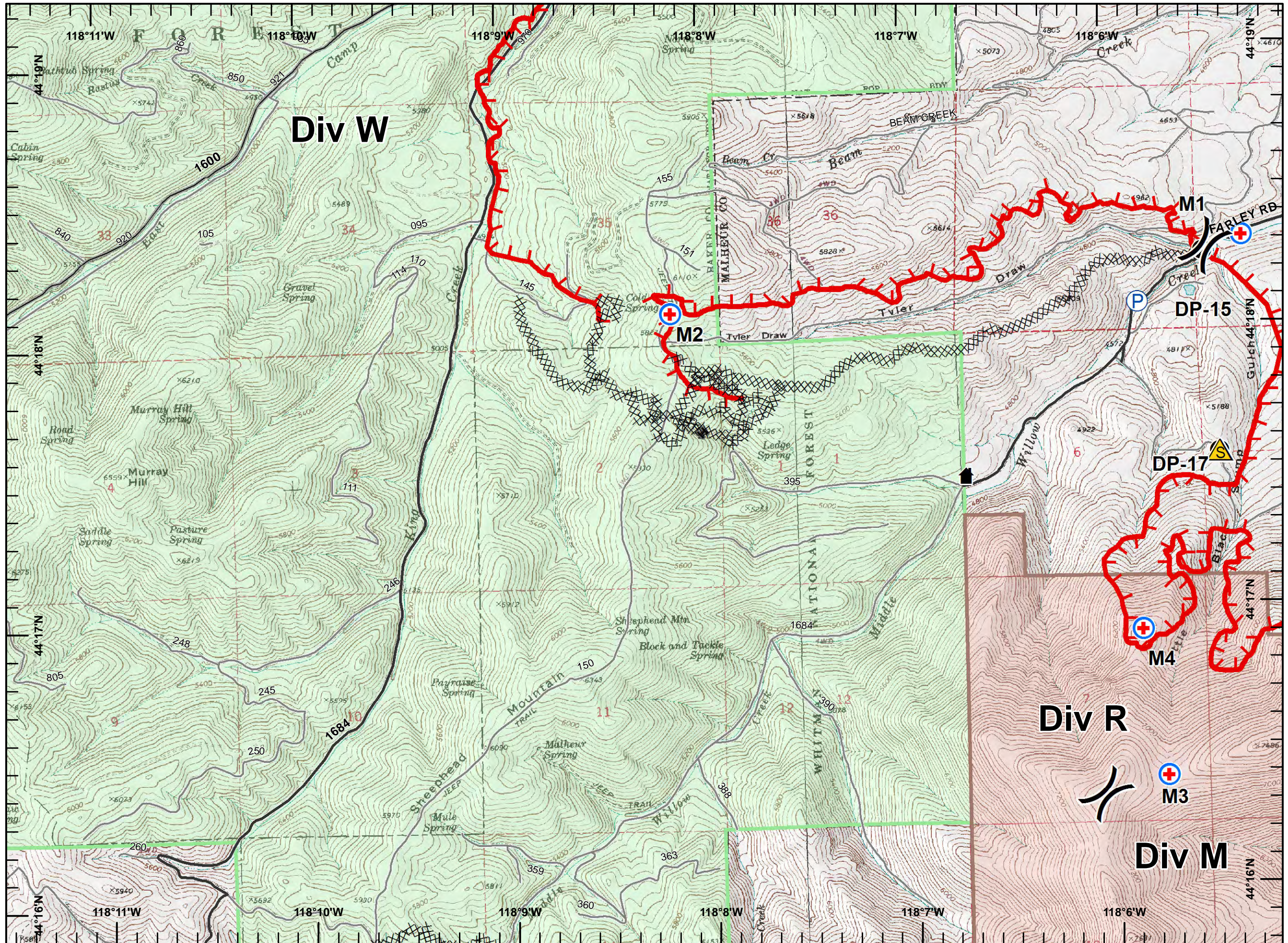
-  Uncontrolled Fire Edge
-  Completed Dozer Line
-  Hand Line
-  Drop Point
-  MediVac Site
-  Pump
-  Safety Zone
-  Structures



Miles



ODF GIS, Team 3  
August 20, 2015  
1441 Hours





# Page 6

ELDORADO  
OR972S-000942

Div W


August 20, 2015, Night  
NAD 83

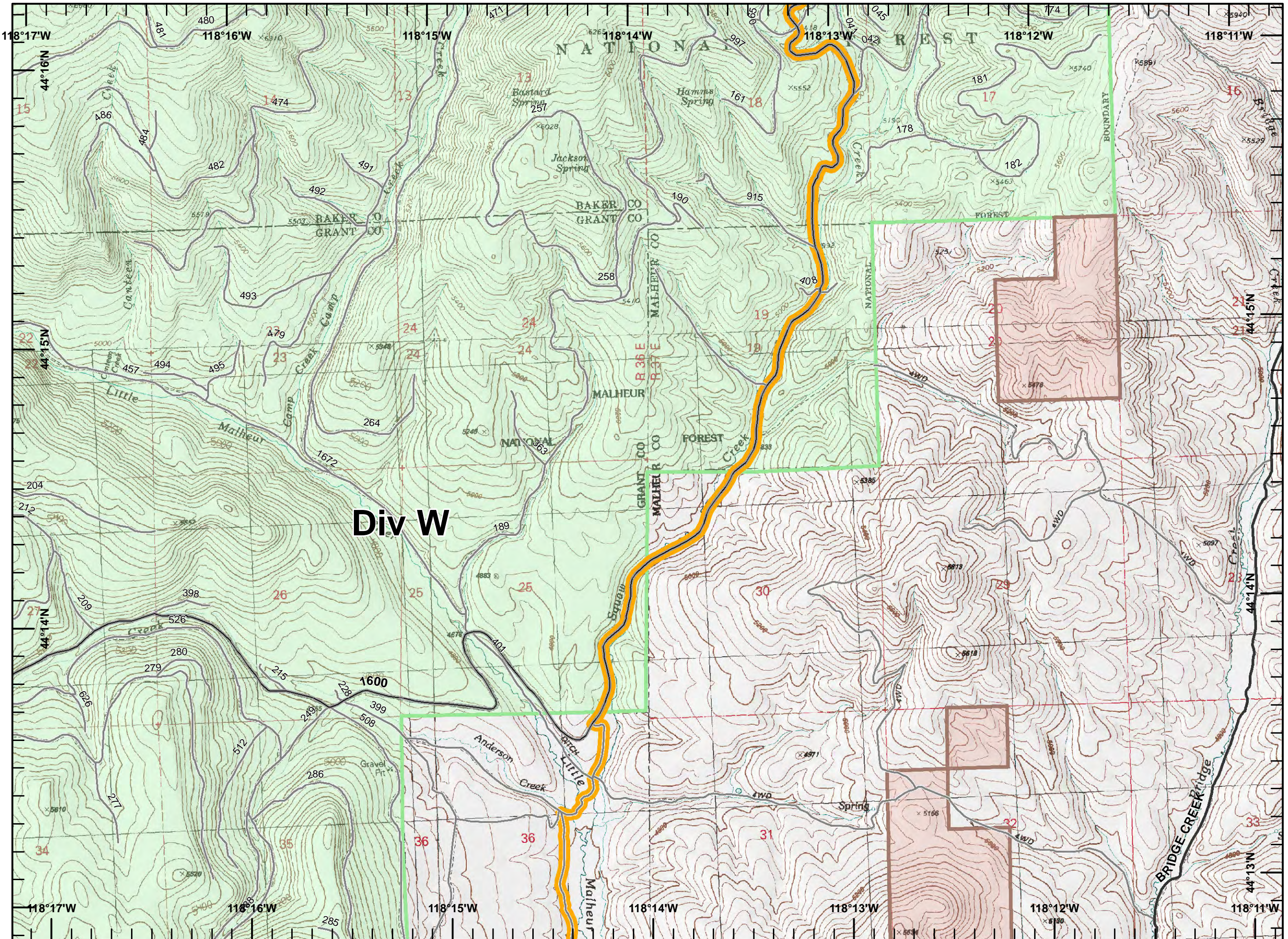
Approx 20,611 ac

## Incident Action Plan Map

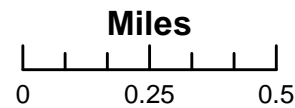
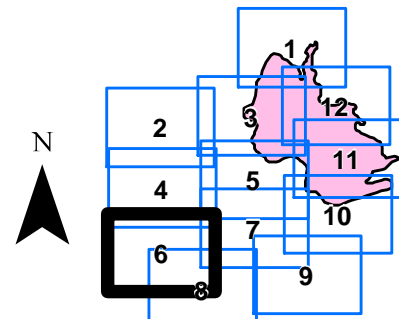
Page 6 of 12

### Legend

 Potential Fire Spread



# Div W



ODF GIS, Team 3  
August 20, 2015  
1441 Hours



# Page 7





ELDORADO  
OR972S-000942

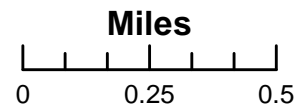
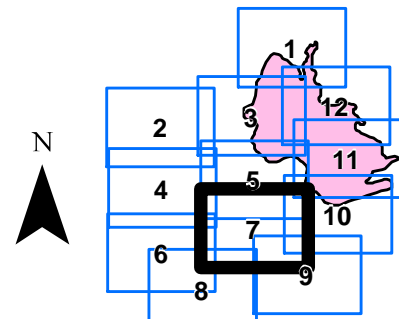
Div M-R  
August 20, 2015, Night  
NAD 83  
Approx 20,611 ac

## Incident Action Plan Map

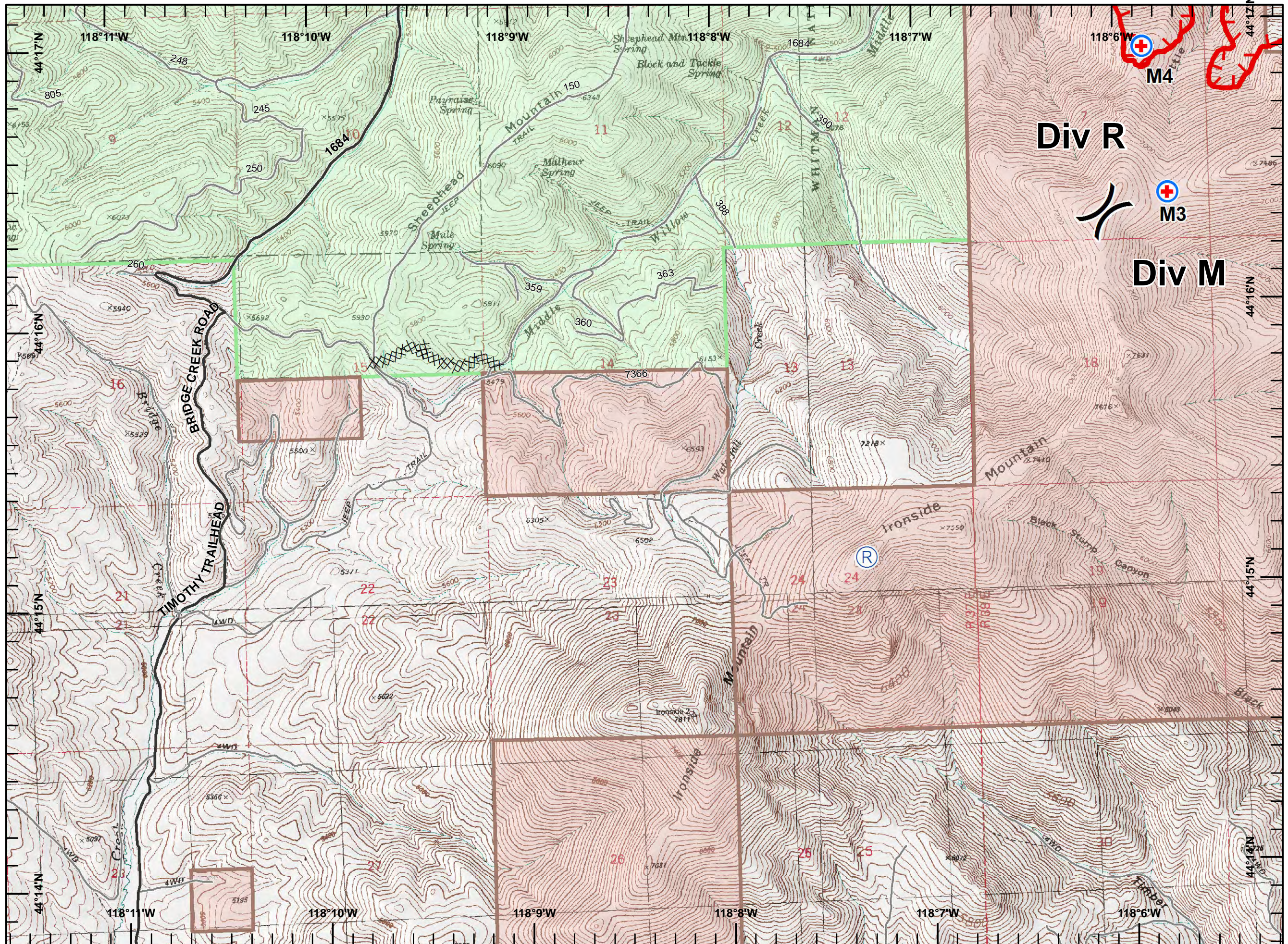
Page 7 of 12

### Legend

-  Uncontrolled Fire Edge
-  Completed Dozer Line
-  MediVac Site
-  Repeater



ODF GIS, Team 3  
August 20, 2015  
1441 Hours






# Page 8

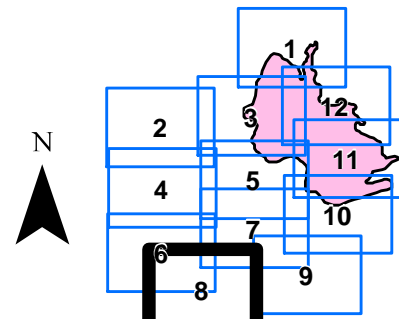
ELDORADO  
OR972S-000942  
Div M-R-W  
August 20, 2015, Night  
NAD 83  
Approx 20,611 ac

## Incident Action Plan Map

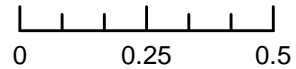
Page 8 of 12

### Legend

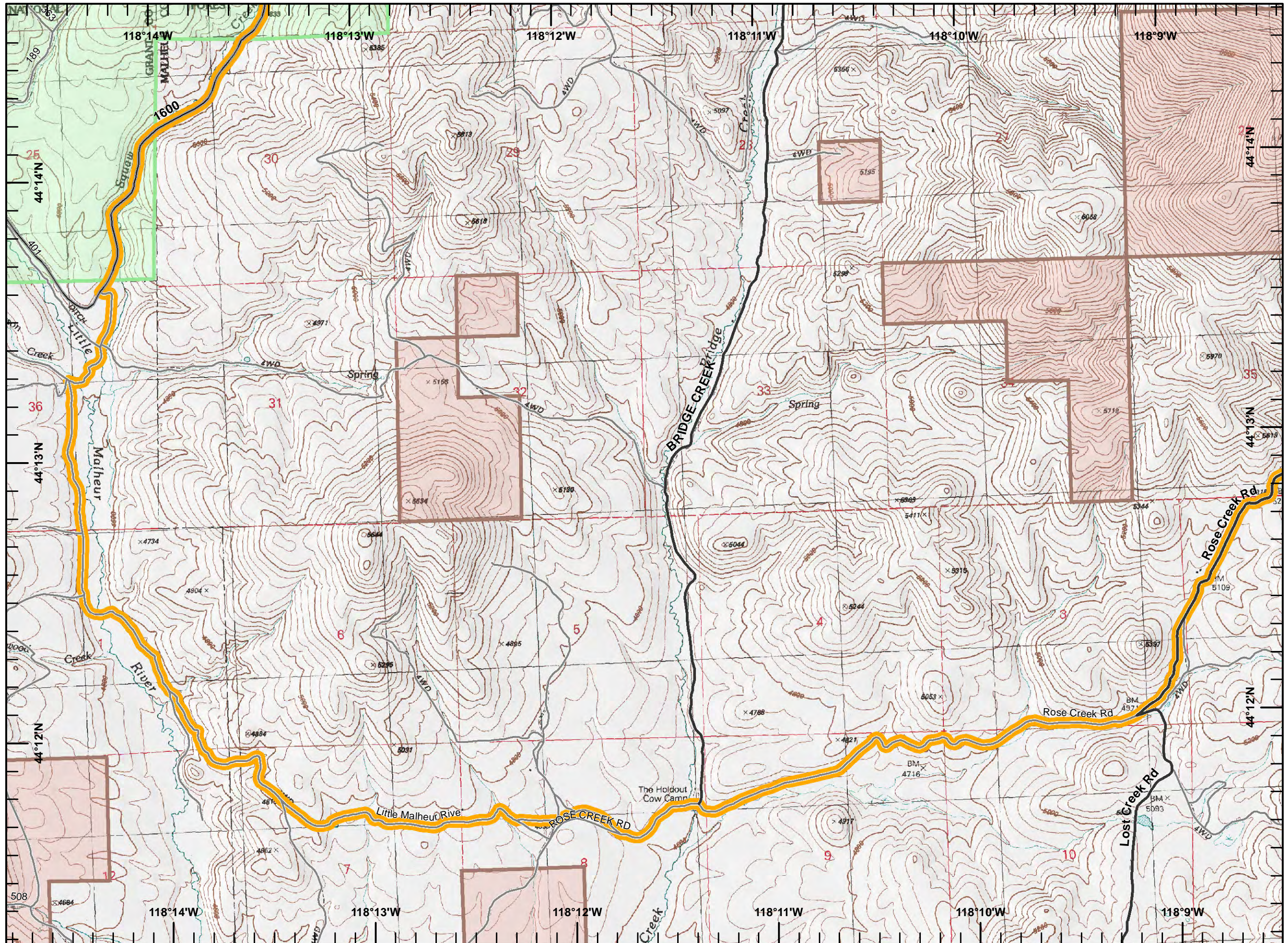
 Potential Fire Spread



Miles



ODF GIS, Team 3  
August 20, 2015  
1441 Hours








# Page 9

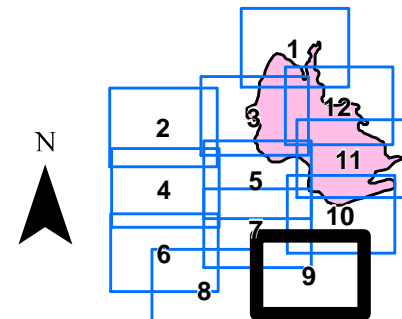
ELDORADO  
OR972S-000942  
Div M  
August 20, 2015, Night  
NAD 83  
Approx 20,611 ac

## Incident Action Plan Map

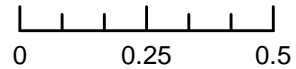
Page 9 of 12

### Legend

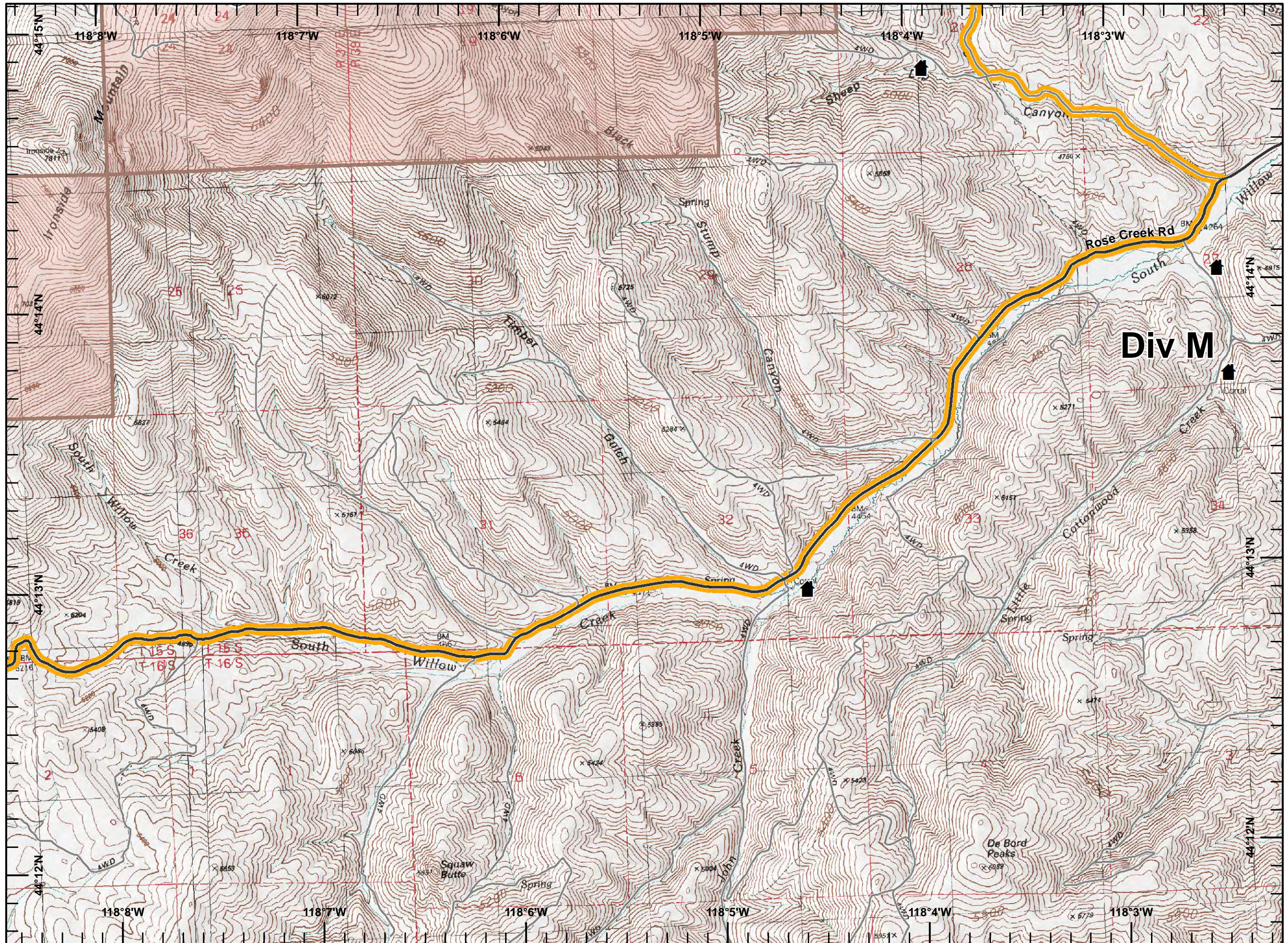
-  Potential Fire Spread
-  Repeater
-  Structures



Miles



ODF GIS, Team 3  
August 20, 2015  
1441 Hours









# Page 11

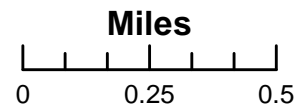
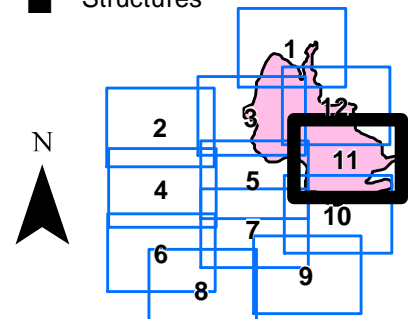
ELDORADO  
OR972S-000942  
Div H-M  
August 20, 2015, Night  
NAD 83  
Approx 20,611 ac

## Incident Action Plan Map

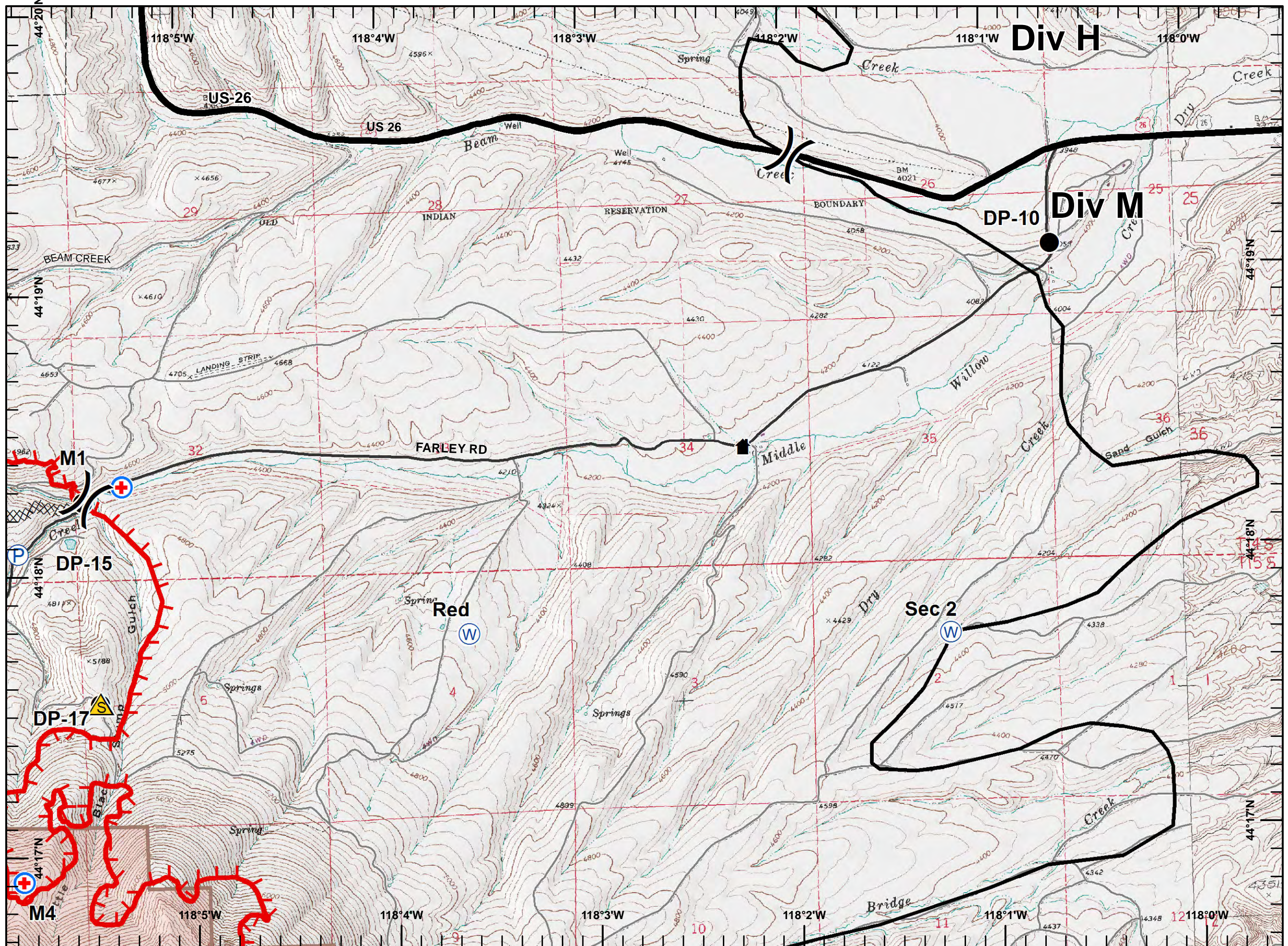
Page 11 of 12

### Legend

- Uncontrolled Fire Edge
- Completed Dozer Line
- Completed Line
- Drop Point
- MediVac Site
- Pump
- Safety Zone
- Dip Site
- Structures



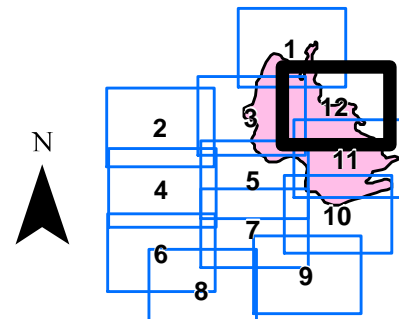
ODF GIS, Team 3  
August 20, 2015  
1442 Hours





Legend

- Completed Line
- Drop Point
- Ⓜ Dip Site



Miles

