

Grizzly Bear Complex

OR-UMF-000947

IAP Tile: DIV M

Sept. 15, 2015

IR Acres: 77,193 20150913 2235

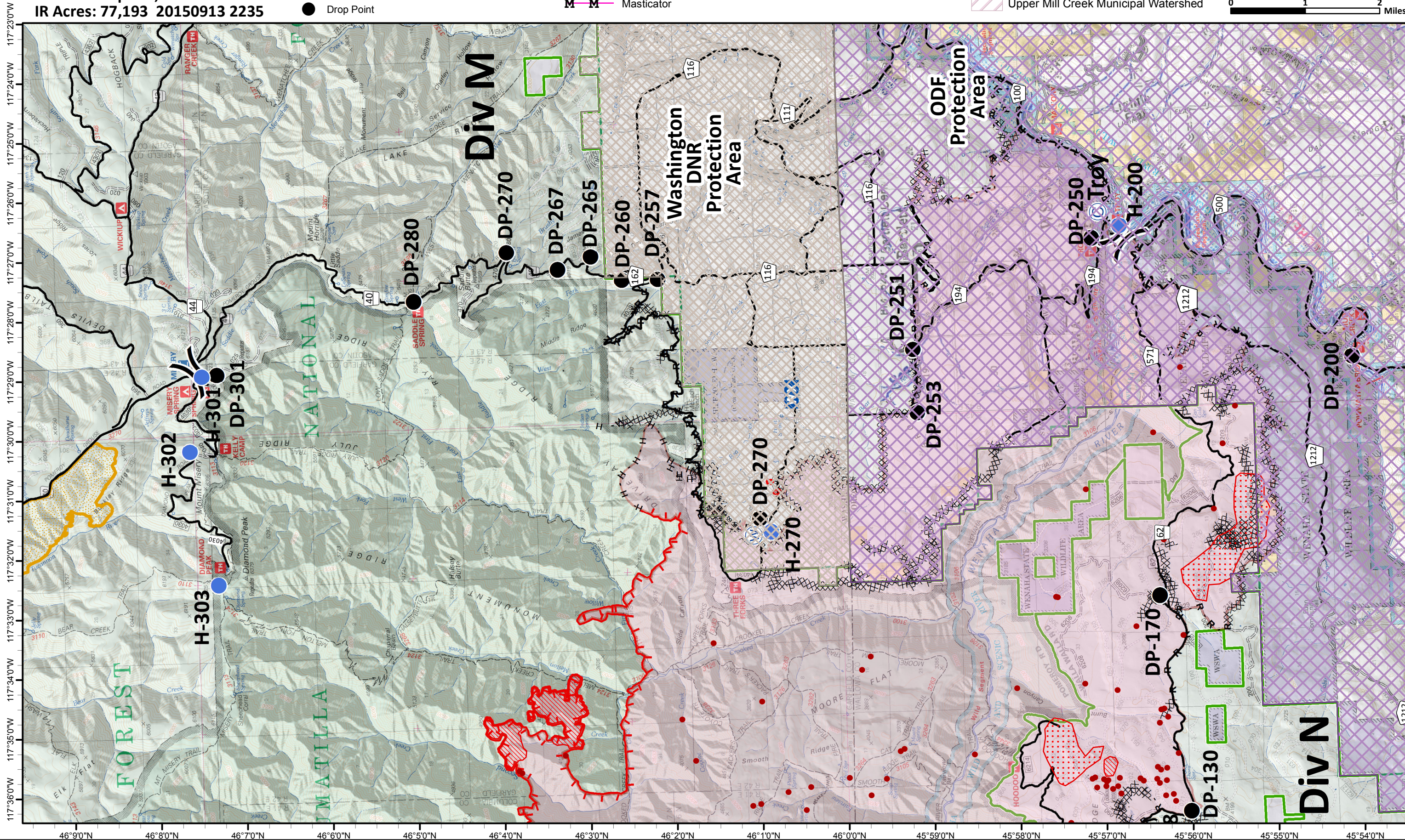
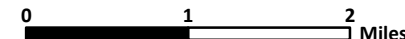
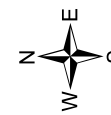
- Isolated Heat
- Ⓡ Repeaters
- Ⓒ Camp
- Drop Point

- Helispot
- WX Mobile Weather Unit
- W Water Source

- Uncontrolled Fire Edge
- F F Feller/Buncher
- Cold Edge
- M M Masticator

- Completed Dozer Line
- H - H - Hand Line
- R - R - Road as Completed Line

- Washington DNR Protection Area
- ODF Protection Area
- Columbia Complex 2006
- Upper Mill Creek Municipal Watershed



Grizzly Bear Complex

OR-UMF-000947

IAP Tile: DIV N

Sept. 15, 2015

IR Acres: 77,193 20150913 2235

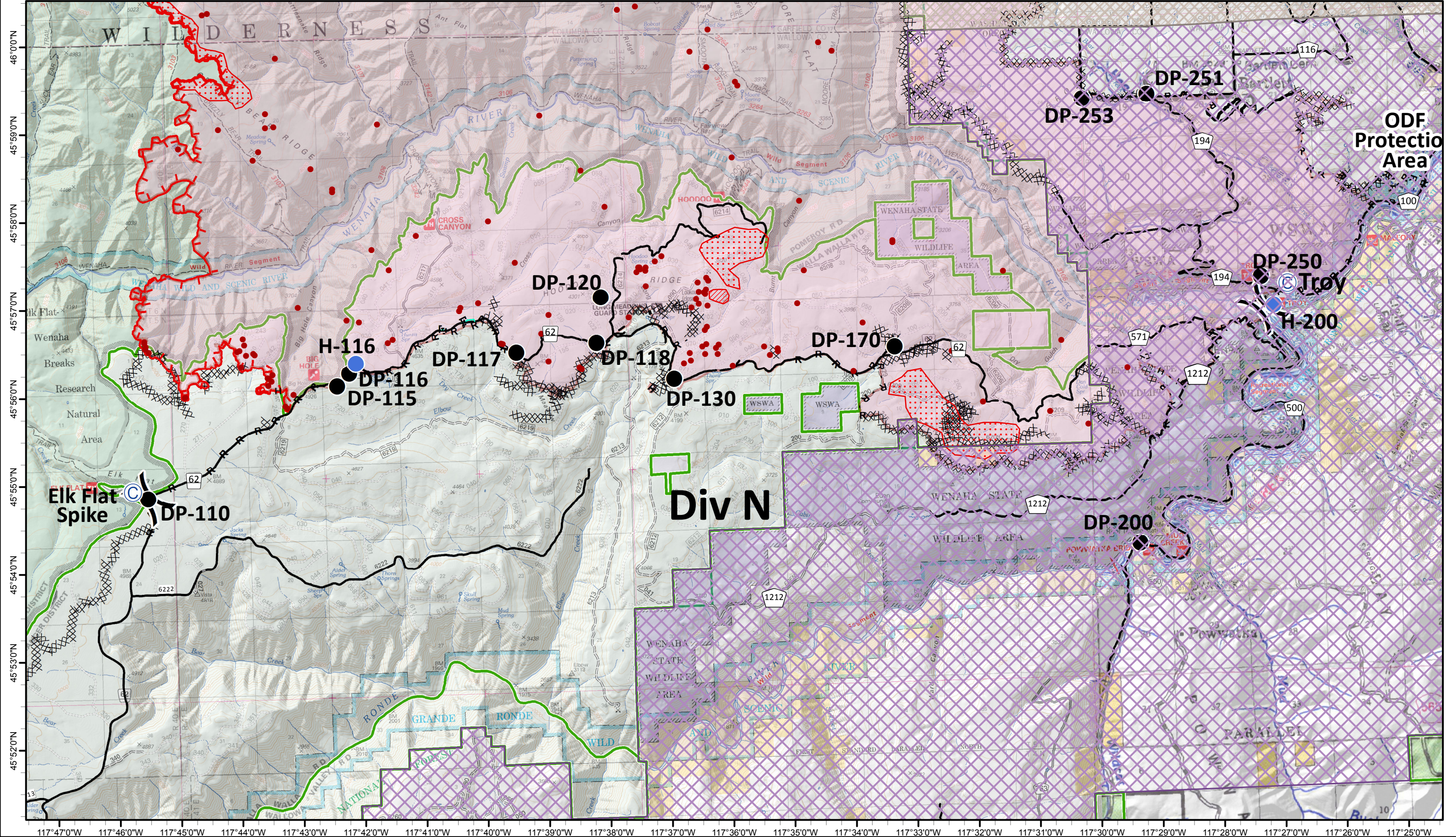
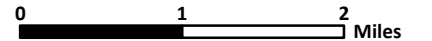
- Isolated Heat
- Ⓡ Repeaters
- Ⓒ Camp
- Drop Point

- Helispot
- WX Mobile Weather Unit
- W Water Source

- Uncontrolled Fire Edge
- F-F Feller/Buncher
- Cold Edge
- M-M Masticator

- Completed Dozer Line
- H - H - Hand Line
- R - R - Road as Completed Line

- Washington DNR Protection Area
- ODF Protection Area
- Columbia Complex 2006
- Upper Mill Creek Municipal Watershed



Grizzly Bear Complex

OR-UMF-000947

IAP Tile: DIV R

Sept. 15, 2015

IR Acres: 77,193 20150913 2235

● Isolated Heat

Ⓡ Repeaters

Ⓒ Camp

● Drop Point

● Helispot

WX Mobile Weather Unit

W Water Source

Uncontrolled Fire Edge

F Feller/Buncher

— Cold Edge

M Masticator

Completed Dozer Line

H - H - Hand Line

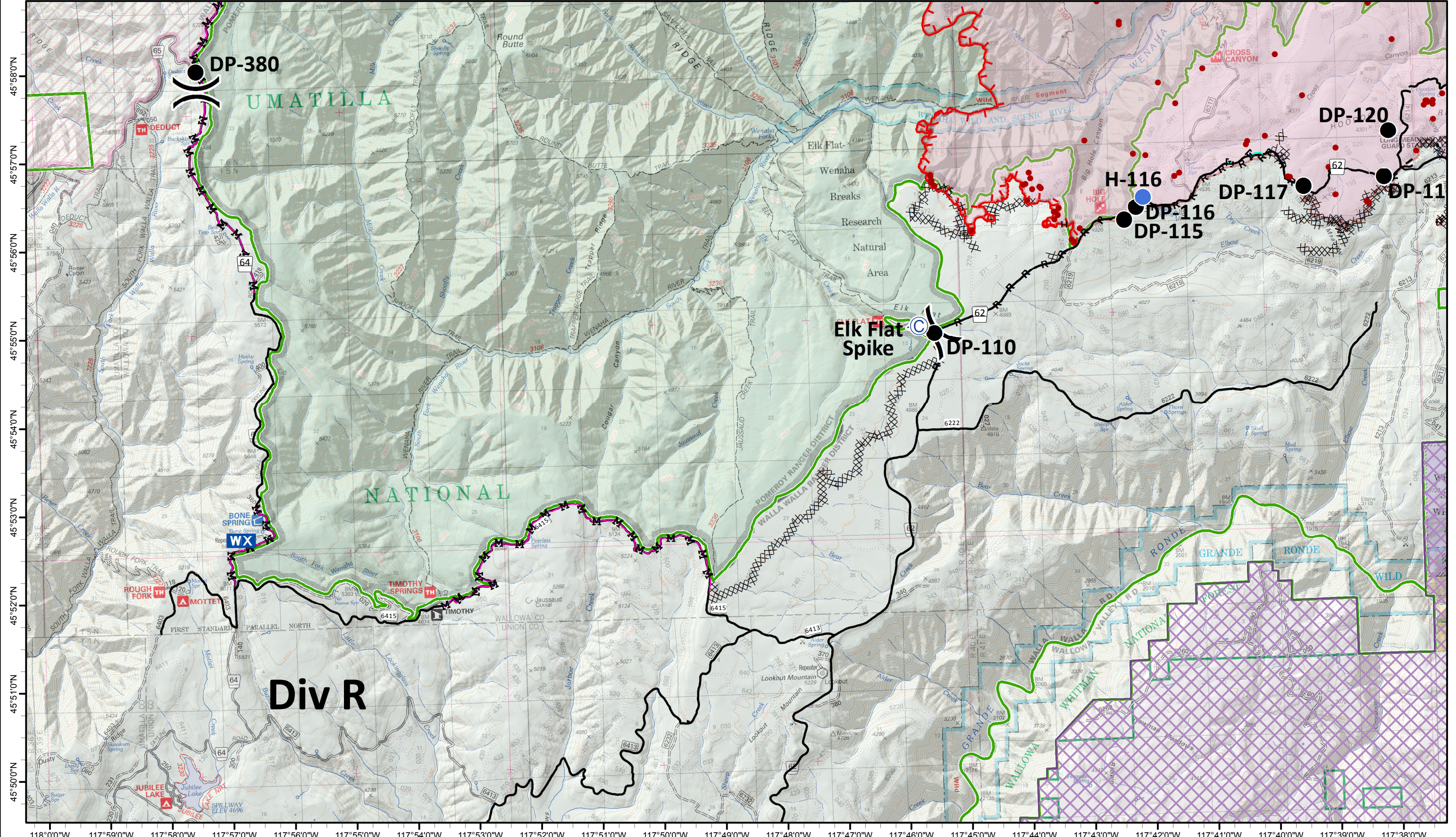
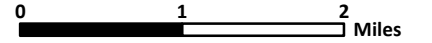
R - R - Road as Completed Line

Washington DNR Protection Area

ODF Protection Area

Columbia Complex 2006

Upper Mill Creek Municipal Watershed



DP-380

DP-120

H-116

DP-116
DP-115

DP-117

DP-11

Elk Flat
Spike

DP-110

UMATILLA

NATIONAL

Div R

118°00'W 117°59'W 117°58'W 117°57'W 117°56'W 117°55'W 117°54'W 117°53'W 117°52'W 117°51'W 117°50'W 117°49'W 117°48'W 117°47'W 117°46'W 117°45'W 117°44'W 117°43'W 117°42'W 117°41'W 117°40'W 117°39'W 117°38'W

Grizzly Bear Complex

OR-UMF-000947

IAP Tile: DIV W/Y (East)

Sept. 15, 2015

IR Acres: 77,193 20150913 2235

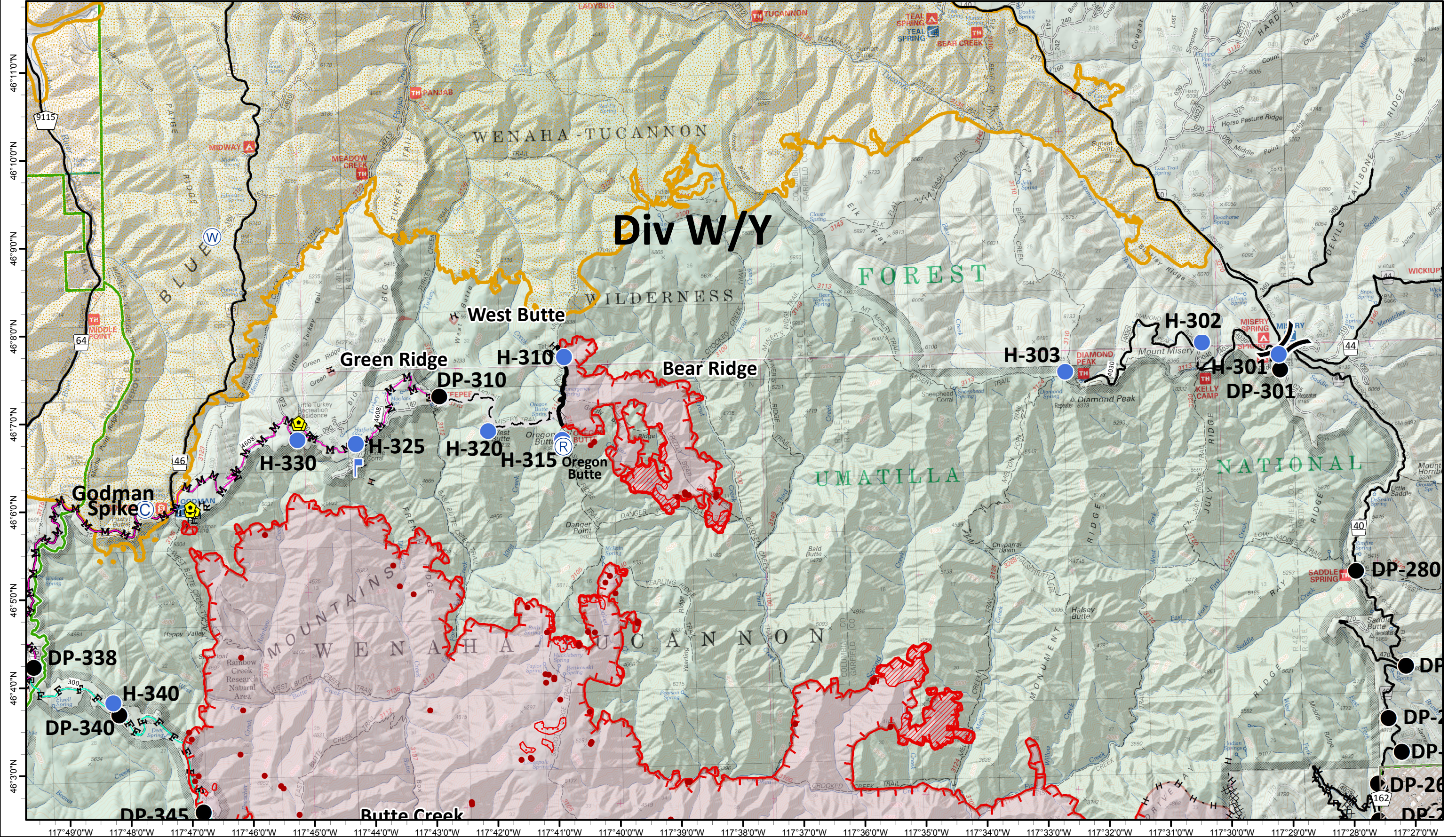
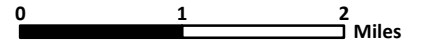
- Isolated Heat
- Ⓡ Repeaters
- Ⓒ Camp
- Drop Point

- Helispot
- WX Mobile Weather Unit
- Ⓜ Water Source

- Uncontrolled Fire Edge
- F-F Feller/Buncher
- Cold Edge
- M-M Masticator

- Completed Dozer Line
- H - H - Hand Line
- R - R - Road as Completed Line

- Washington DNR Protection Area
- ODF Protection Area
- Columbia Complex 2006
- Upper Mill Creek Municipal Watershed



Grizzly Bear Complex

OR-UMF-000947

IAP Tile: DIV W/Y (West)

Sept. 15, 2015

IR Acres: 77,193 20150913 2235

- Isolated Heat
- Helispot
- ▬ Uncontrolled Fire Edge
- ▬ Feller/Buncher
- ▬ Cold Edge
- ▬ Masticator
- ⊗ Completed Dozer Line
- H - H - Hand Line
- R - R - Road as Completed Line
- ▨ Washington DNR Protection Area
- ▨ ODF Protection Area
- ▨ Columbia Complex 2006
- ▨ Upper Mill Creek Municipal Watershed

